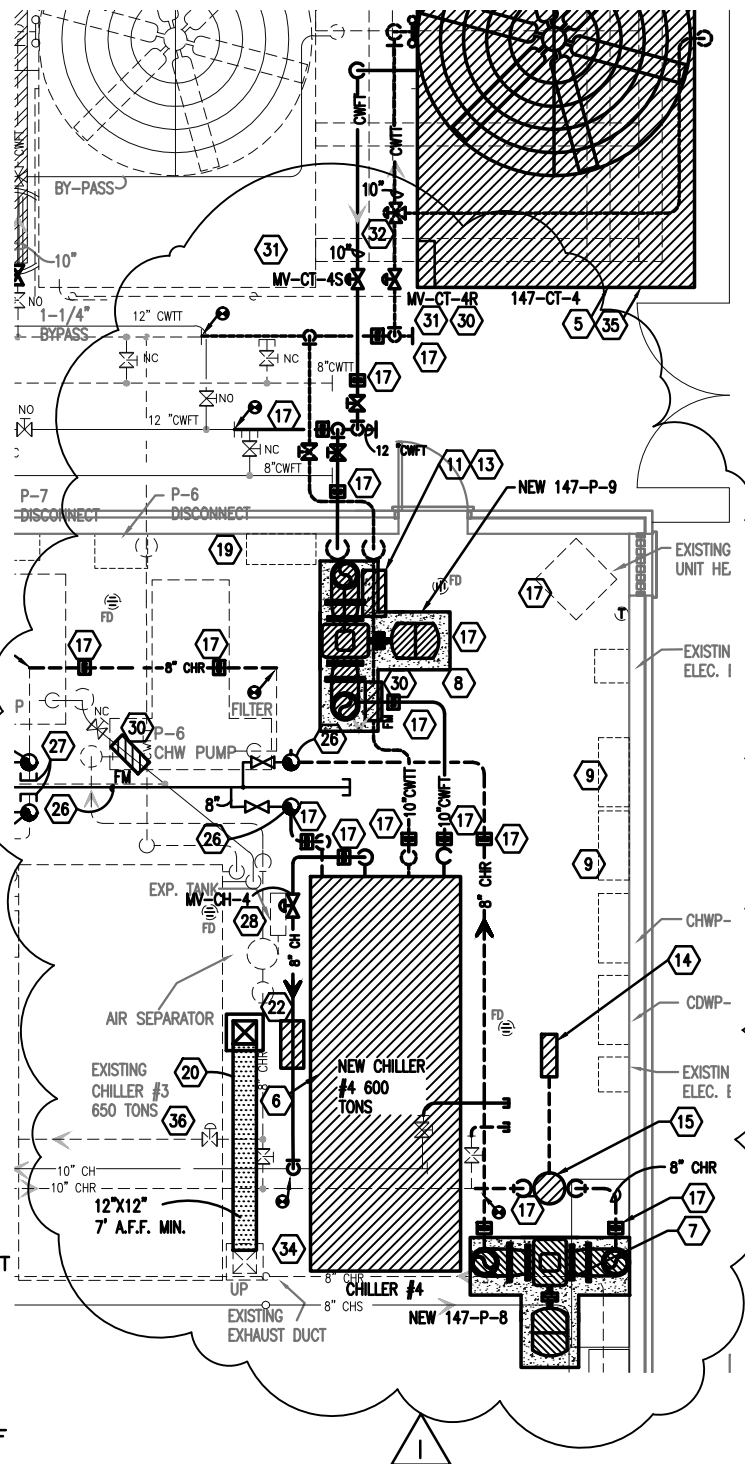


# MECHANICAL KEYNOTES:

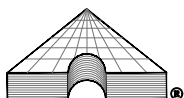
- 5 INSTALL NEW STAINLESS STEEL COOLING TOWER IN THIS VICINITY. MODIFY EXISTING STRUCTURE AS REQUIRED FOR NEW COOLING TOWER.
- 6 INSTALL NEW CHILLER IN THIS VICINITY. INSTALL NEW 6" HIGH CONCRETE PAD 6" AROUND PERIMETER OF NEW CHILLER.
- 7 INSTALL NEW CHILLED WATER PUMP P-8 IN THIS VICINITY.
- 8 INSTALL NEW CONDENSER WATER PUMP P-9 IN THIS VICINITY.
- 9 REFER TO ELECTRICAL PLANS FOR NEW VFD INSTALLATION LOCATIONS AND SPECIFICATIONS.
- 13 INSTALL NEW DOLPHIN NON CHEMICAL WATER TREATMENT SYSTEM IN THIS VICINITY.(BID ADDITIVE #1)
- 14 INSTALL NEW EXPANSION TANK IN THIS VICINITY.
- 15 INSTALL NEW AIR SEPARATOR IN THIS VICINITY.
- 16 PROVIDE NEW STRUCTURE SUPPORT FOR NEW TOWER. EXTEND/PROVIDE NEW PLATFORM AS REQUIRED FOR NEW TOWER ACCESS. PROVIDE STAMPED STRUCTURAL PLANS DURING SHOP DRAWINGS FOR REVIEW. AT CONTRACTOR'S OPTION, REUSE EXISTING BEAMS IN LIEU OF NEW.
- 17 PROVIDE PIPE SUPPORTS IN THIS VICINITY (TYPICAL) TO SUPPORT NEW PIPING AS REQUIRED.
- 20 RELOCATE EXISTING DUCTWORK DROP TO THIS VICINITY.
- 21 INSTALL NEW FLOW METER IN THIS VICINITY. MATCH EXISTING TYPE.
- 22 INSTALL NEW MAG FLOW METER IN THIS VICINITY.
- 26 RISE UP THROUGH ROOF AND CONNECT TO NEW CHILLED WATER HEADER ON ROOF. PROVIDE PIPE SUPPORTS EVERY 5 FEET ON ROOF FOR NEW 16" HEADER LINE.
- 27 CAP EXISTING CONNECTION BETWEEN CHILLED WATER PUMP AND CHILLER TO ALLOW WATER TO FLOW THROUGH HEADER.
- 28 INSTALL NEW CONTROL VALVE IN THIS VICINITY.
- 30 BID ADDITIVE #1: INSTALL FLOW METER ON CONDENSER WATER LINE.
- 31 BID ADDITIVE #1: INSTALL NEW MODULATING VALVE ON CONDENSER WATER LINE.
- 32 INSTALL COOLING TOWER CONDENSER WATER BY PASS VALVE AND PIPE TO BASIN.
- 33 BID ADDITIVE #1: PROVIDE A 12" EQUALIZATION PIPE AND CONNECT TO ALL TOWERS. CONTRACTOR MAY HAVE TO ADJUST BASIN HEIGHT OF EXISTING TOWERS TO REMAIN TO MATCH NEW TOWER BASIN HEIGHT. PIPE MAY BE ROUTED UNDER COOLING TOWERS. PROVIDE PIPES SUPPORTS AS REQUIRED.
- 34 EXTEND REFRIGERANT MONITOR SYSTEM FOR THE NEW CHILLER IN THIS VICINITY. PROVIDE ANY UPGRADES REQUIRED FOR A COMPLETE AN OPERATIONAL SYSTEM. EXTEND REFRIGERANT RELIEF LINES THROUGH ROOF.
- 35 EXTEND 2" MAKE UP WATER LINE TO NEW COOLING TOWER. PROVIDE INSULATION AND HEAT TAPE FOR MAKE UP WATER LINE.
- 36 BYPASS CONTROL VALVE SHALL BE SHUT. PLANT SHALL USE NEW BY PASS LINE INSTALLED IN MAIN COMMON HEADER.



5/21/2012 REVISION

## NEW COOLING TOWER CHILLER PLAN - MECHANICAL

SCALE : 1/8" = 1' - 0"



**ASSOCIATED DESIGN GROUP, INC.**  
A PROFESSIONAL ENGINEERING COMPANY  
Lafayette, Louisiana (337) 234-5710

**VA HOSPITAL  
CENTRAL PLANT MODIFICATIONS  
ALEXANDRIA, LA**

JOB NO: 11106  
SCALE: 1/8" = 1'  
DATE: 5/21/2012  
SHEET: M2R