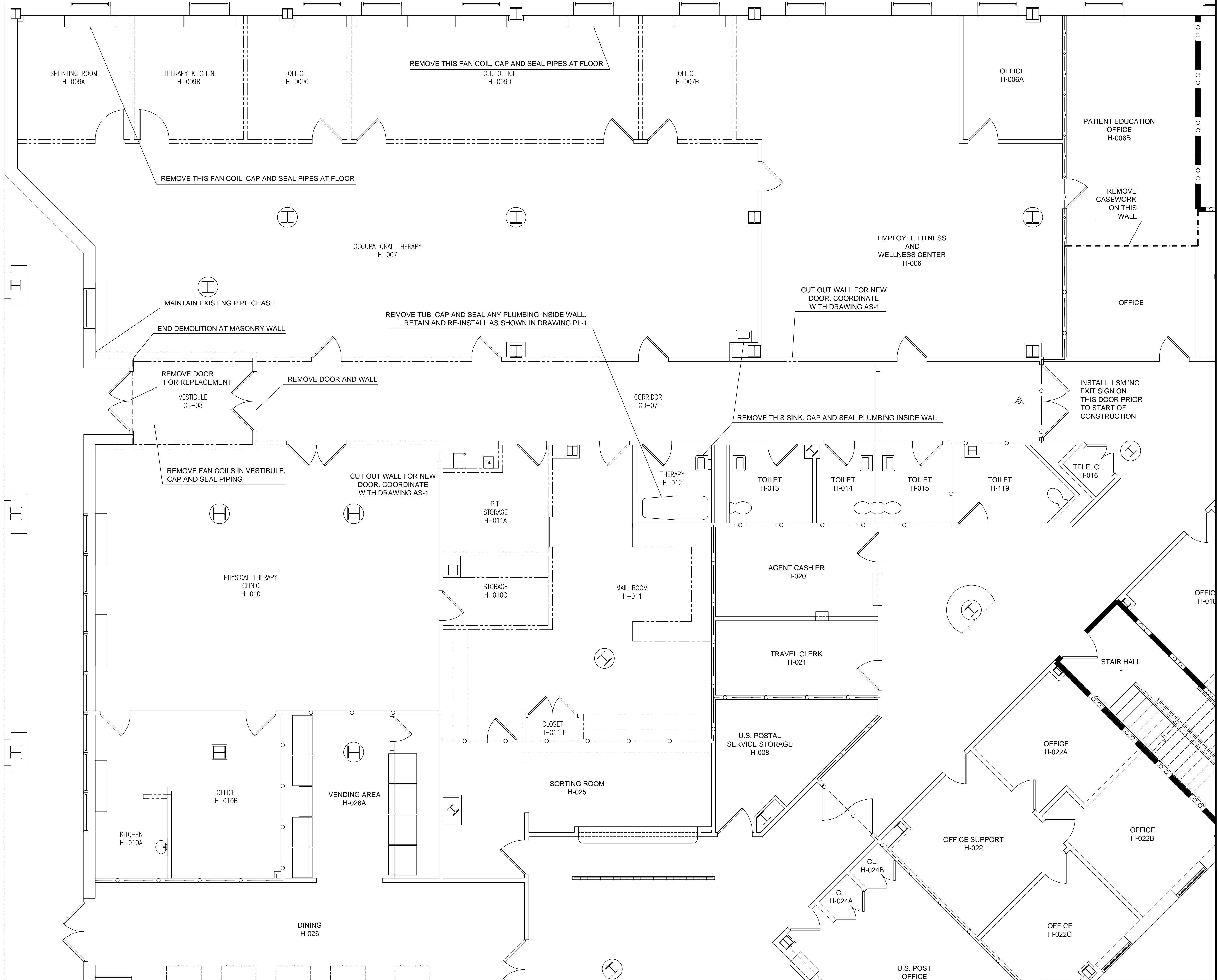
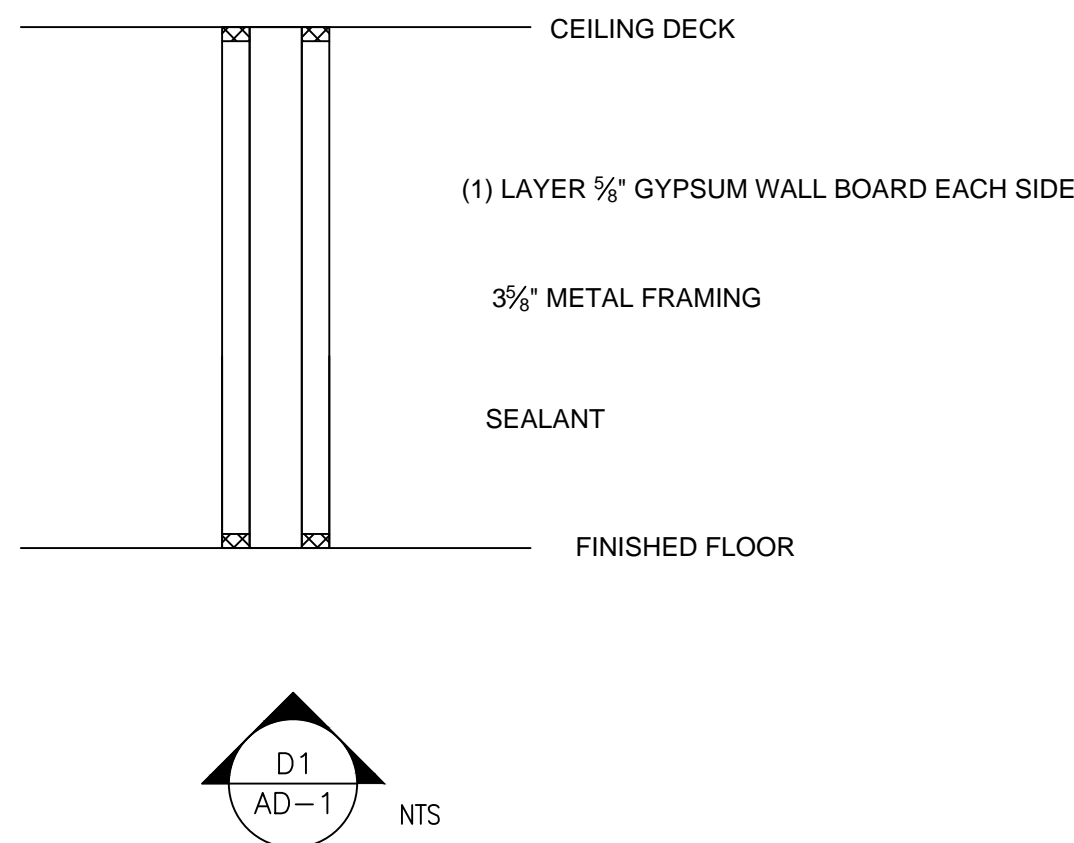




one eighth inch = one foot
one quarter inch = one foot
one half inch = one foot
one inch = one foot
three quarters inch = one foot
two inches = one foot
three inches = one foot
four inches = one foot
six inches = one foot
eight inches = one foot
ten inches = one foot
twelve inches = one foot
fourteen inches = one foot
sixteen inches = one foot
one foot = one foot

LEGEND	
	CONSTRUCTION BARRIER
	1 HOUR FIRE BARRIER
	THIS WALL TO BE DEMOLISHED, COORDINATE WITH DRAWING AS-1

- NOTES:
- EXISTING EQUIPMENT, IN AREAS OF DEMOLITION SUCH AS LIGHTING FIXTURES, WIRING DEVICES, CONDUITS, ETC., TO BE REMOVED COMPLETELY. CUT/CAP CONDUITS AT THE AREA OF WORK PERIMETER AND REMOVE CONDUIT WITHIN THE WORK AREA, DISCONNECT WIRING AT THE OVERCURRENT PROTECTIVE DEVICE AND REMOVE WIRING COMPLETELY FROM THE ABANDONED CONDUITS.
 - REMOVE ALL ACCESSIBLE ABANDONED WIRING OF ALL TYPES, OR CAP AND LABEL IN JUNCTION BOX FOR RE-USE, IN COMPLIANCE WITH THE NATIONAL ELECTRIC CODE.
 - MAINTAIN AND RESTORE, IF INTERRUPTED, ALL CONDUITS AND CONDUCTORS PASSING THROUGH RENOVATED AREAS AND SERVICING UNDISTURBED AREAS.
 - CONSTRUCTION BARRIER TO EXTEND FLOOR TO CEILING DECK, SEE DETAIL D1. FIRESTOP ALL PENETRATIONS MINIMUM 1 HOUR RATING. CONSTRUCTION BARRIER MUST BE CONSTRUCTED ON OFF HOURS. WHERE EXISTING FIREWALL IS USED AS A CONSTRUCTION BARRIER, THE CONTRACTOR IS REQUIRED TO PROVIDE ANY CORRECTIONS NECESSARY TO MAINTAIN RATING ON FULL WALL.
 - DEMOLISH AND DISPOSE OF ALL FURNITURE AND CASEWORK IN ROOMS H-011, H-011A, H-011B, H-010C.
 - THIS DOOR IS TO BE THE CONTRACTOR ENTRANCE TO CONSTRUCTION AREA. REPLACE EXISTING DOORS WITH 45 MINUTE RATED 1-3/4" SOLID CORE WOOD DOORS OF SAME SIZE. RE-KEY DOOR TO CONSTRUCTION KEY TO BE PROVIDED BY VA. INSTALL CLOSERS AND MAINTAIN IN PLACE UNTIL CONSTRUCTION COMPLETE AND COTR APPROVES INSTALLATION OF NEW DOOR OR CLOSURE OF WALL PER DRAWING AS-1. DOOR HARDWARE IS TO INCLUDE CL3357 x NZD X CL6 OR EQUAL ON ACTIVE (RIGHT) LEAF, AND A ROCKWOOD 1840 SERIES AUTOMATIC FLUSH BOLT ON THE INACTIVE (LEFT) LEAF.
 - ALL ITEMS REMOVED BECOME THE CONTRACTOR'S PROPERTY FOR PURPOSE OF DISPOSAL.
 - DEMOLISH EXISTING ACOUSTIC CEILING IN ALL ROOMS.
- PRIOR TO START OF CONSTRUCTION, ALL SUBMITTALS MUST BE APPROVED AND MATERIAL TO BEGIN WORK MUST BE ON SITE. ONCE THESE CONDITIONS ARE MET CONTRACTOR MUST GIVE VA 15 CALENDAR DAYS TO VACATE SPACE.



		CONSULTANTS:	ARCHITECT/ENGINEERS:	NORTH: 		APPROVED:	Drawing Title DEMOLITION GROUND FLOOR 1/8" = 1'	Project Title PHYSICAL THERAPY OFFICES	Project Number 62044-11-224	Engineering Service	
						APPROVED:			Building(s) Number 15H		
						APPROVED:			Drawing Number		
Contract Document Review 2-20-2012	3-16-2012					APPROVED:			Location CASTLE POINT, NEW YORK		15H-AD-1
Contract Documents 5-19-2011	2-20-2012					APPROVED:			Date 5-19-2011		
UPDATED FOR PHASING 12-15-2010	5-19-2011		APPROVED:	Approved: Director , VAHVHCS:	SHEET 12 OF 28						
INITIAL DRAWING Date:	12-15-2010		APPROVED:	Approved: Chief of Engineering							
Revisions:	Date:		APPROVED:	APPROVED:							

 Department of Veterans Affairs