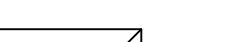
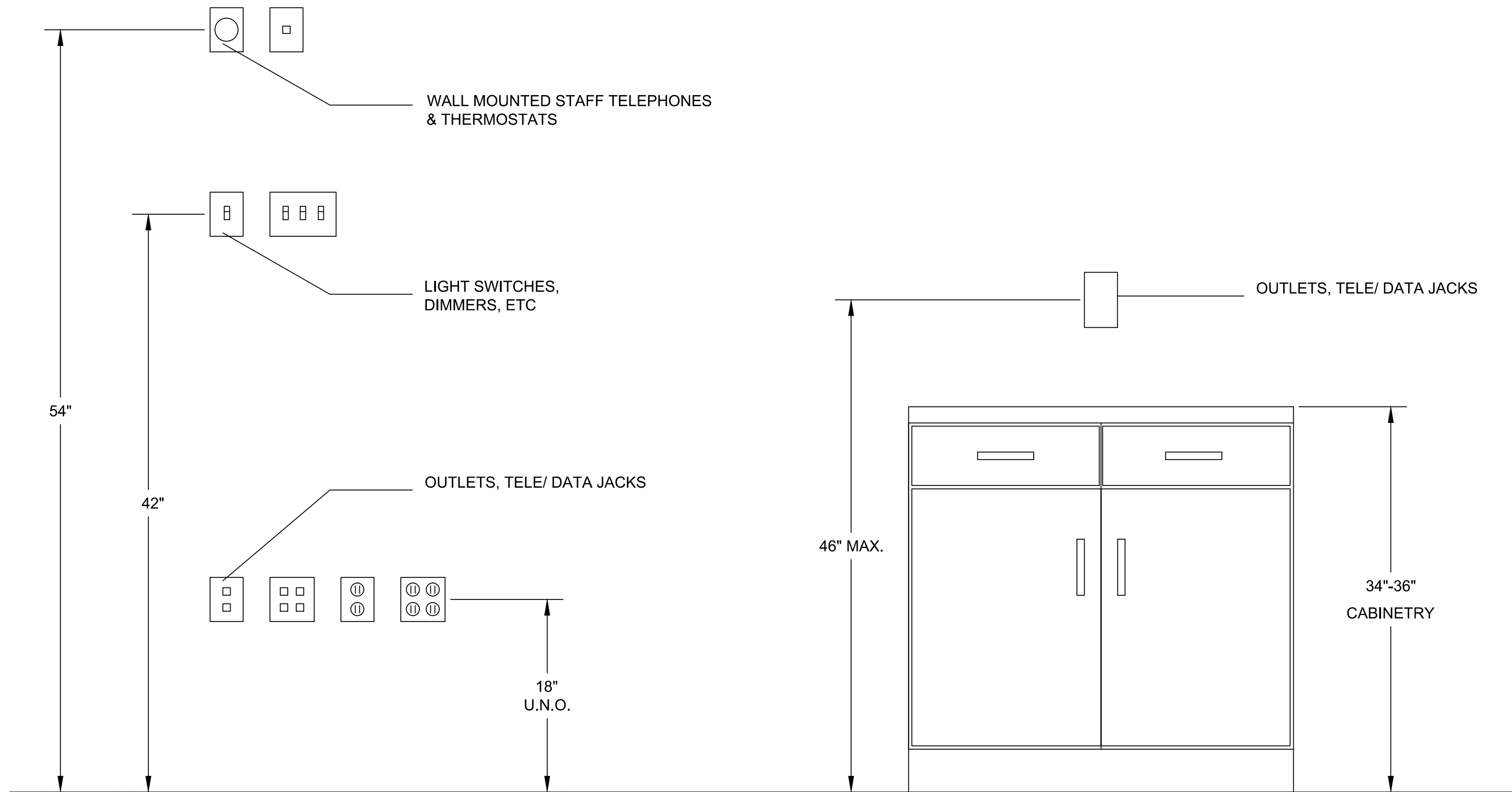



Electrical Run Schedule						
RUN#	AMPERAGE	VOLTS	POLES	Description	Wire size and qty	Conduit size
1	20	120	1	OUTLETS	(3) #12	3/4"
2	20	120	1	OUTLETS	(3) #12	3/4"
3	20	120	1	OUTLETS	(3) #12	3/4"
4	20	120	1	OUTLETS	(3) #12	3/4"
5	20	120	1	OUTLETS	(3) #12	3/4"
6	20	120	1	THERMAL PACKS	(3) #12	3/4"
7	20	120	1	OUTLETS	(3) #12	3/4"
8	20	120	1	OUTLETS	(3) #12	3/4"
9	40	208	3	ELECTRIC RANGE	(4) #8 w/ GND as per NEC	1" min.
10	20	120	1	OUTLETS	(3) #12	3/4"
11	20	120	1	OUTLETS	(3) #12	3/4"
12	20	120	1	OUTLETS	(3) #12	3/4"
13	20	120	1	OUTLETS	(3) #12	3/4"
14	20	120	1	OUTLETS	(3) #12	3/4"
15	20	120	1	DRINKING FOUNTAIN	(3) #12	3/4"
16	20	120	1	AUTOMATIC DOOR	(3) #12	3/4"
17	20	120	1	OUTLETS	(3) #12	3/4"

LIGHTING FIXTURE SCHEDULE							
Type	Symbol	Volts	No. of Lamps	Lamp Type	Total Watts	Description	Remarks
A		120	2	PHILIPS P/N 20423-0 FB32T8/U (CRI=85 OR BETTER) 4100K	50	- 2'X2' RECESSED FLUORESCENT WITH ACRYLIC LENS & ELECTRONIC BALLAST - LEGION CAT # 72- 2U32 EBO OR APPROVED EQUAL	



E3 ES-3 TYPICAL MOUNTING HEIGHTS

		CONSULTANTS:	ARCHITECT/ENGINEERS:	NORTH:		APPROVED:	Drawing Title	Project Title	Project Number	 Department of Veterans Affairs	
						APPROVED:	ELECTRICAL SCHEDULES	PHYSICAL THERAPY OFFICES	620A4-11-224		
						APPROVED:	GROUND FLOOR		Building(s) Number		
						APPROVED:	1/4" = 1'		15H		
Contract Document Review	3-16-2012					APPROVED:	Approved: Director , VAHVHCS:	Location	Drawing Number		
Contract Documents	2-20-2012					APPROVED:		CASTLE POINT, NEW YORK	15H-ES-3		
INITIAL DRAWING	12-15-2010				APPROVED:	APPROVED:	Approved: Chief of Engineering	Date	Checked	Drawn	
Revisions:	Date:							12-15-2010		JEF	SHEET 23 OF 28