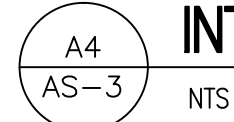
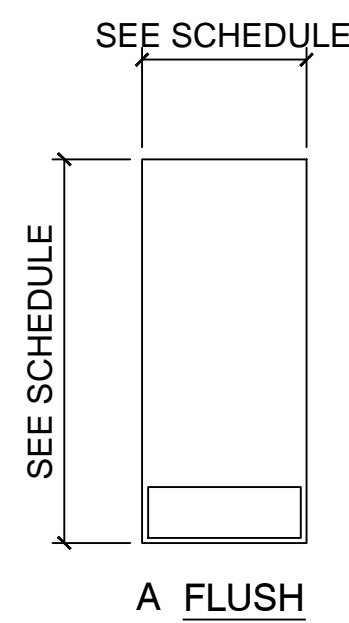


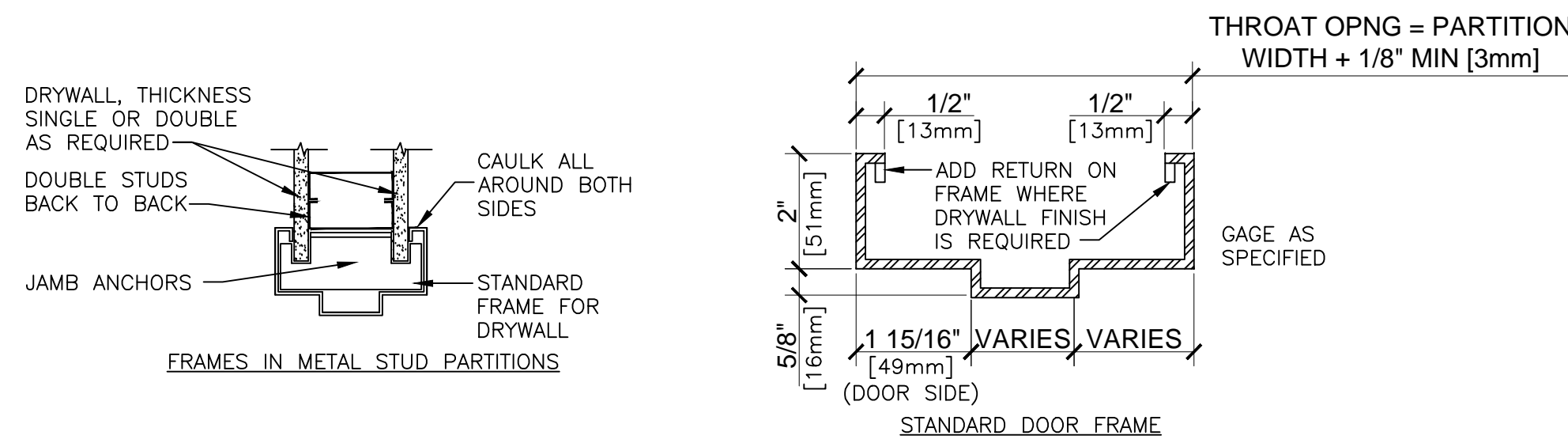
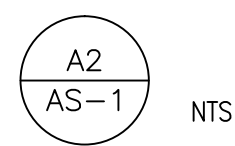
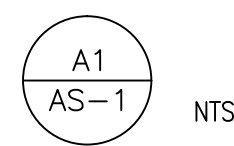
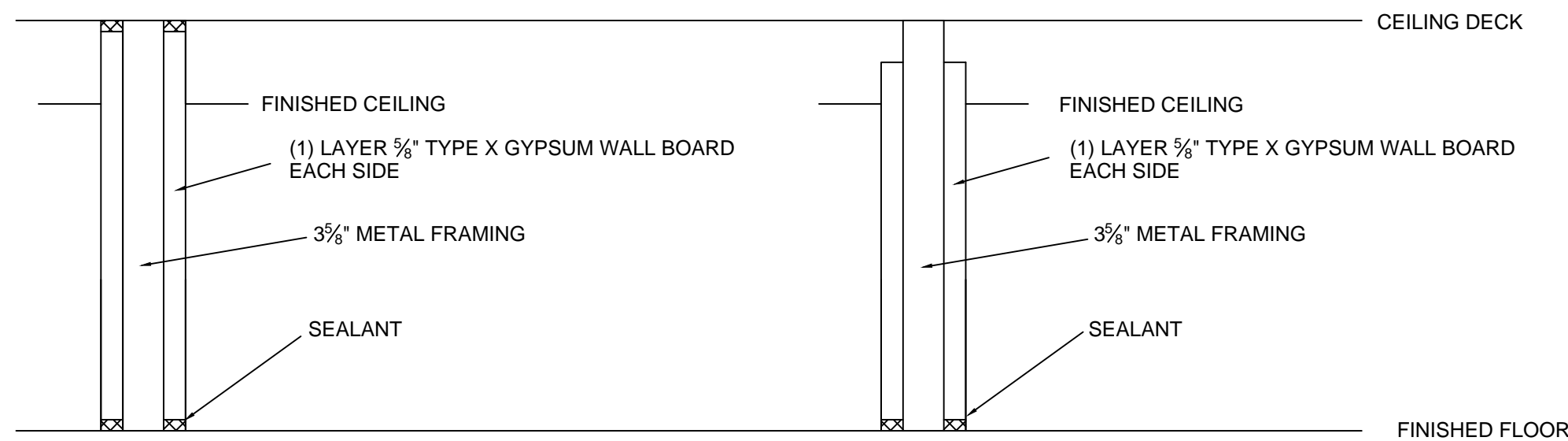
SET 1 - OFFICE DOOR
(3) HINGES
(1) OFFICE FUNCTION LOCKSET, CORBIN RUSSWIN CL3351 x NZD X 626 X CL6 OR EQUAL
(1) MECHANICAL HOLD OPEN CLOSERS
(1) STAINLESS STEEL MOP PLATES
SILENCERS AS REQUIRED

DOOR SCHEDULE													
	DOOR						FRAME						
DOOR ID	WIDTH	HEIGHT	THICKNESS	FINISH	MATERIALS	ELEVATION	WIDTH	HEIGHT	FINISH	MATERIALS	FIRE RATING	HARDWARE	NOTES
A	3'-6"	7'-0"	1-3/4"	FACTORY	SOLID WOOD	1	3'-10"	7'-2"	PAINT	STEEL HOLLOW METAL	20 min.	1	
B	3'-6"	7'-0"	1-3/4"	FACTORY	SOLID WOOD	1	3'-10"	7'-2"	PAINT	STEEL HOLLOW METAL	20 min.	1	
C	3'-0"	7'-0"	1-3/4"	FACTORY	SOLID WOOD	1	3'-4"	7'-2"	PAINT	STEEL HOLLOW METAL	1 HOUR	1	CONSTRUCTION BARRIER
D	3'-0"	7'-0"	1-3/4"	FACTORY	SOLID WOOD	1	3'-4"	7'-2"	PAINT	STEEL HOLLOW METAL	1 HOUR	1	CONSTRUCTION BARRIER
E	6'-0"	7'-0"	1-3/4"	FACTORY	SOLID WOOD	-	EXISTING	EXISTING	PAINT	EXISTING	1 HOUR	EXISTING	CONSTRUCTION BARRIER





NOTES:

1. FOR ORIENTATION, SWING, AND SLIDE DIRECTIONS SEE DRAWING AS-1



NTS

		CONSULTANTS:	ARCHITECT/ENGINEERS:	NORTH: <div></div>		APPROVED:	Drawing Title	Project Title			Project Number	Engineering Service
						CONSTRUCTION DETAILS	PHYSICAL THERAPY PHASING			620A4-11-224		
						GROUND FLOOR 3/4" = 1'				Building(s) Number		
										18D		
							APPROVED: Director , VAHVHCS:	Location		Drawing Number		
							CASTLE POINT, NEW YORK					
Contract Documents	2-20-2012											 Department of Veterans Affairs
INITIAL DRAWING	12-15-2010				APPROVED:	APPROVED:	Approved: Chief of Engineering	Date	Checked	Drawn	18-AS-3	
Revisions:	Date:							12-15-2010		JEF	SHEET 5 OF 28	