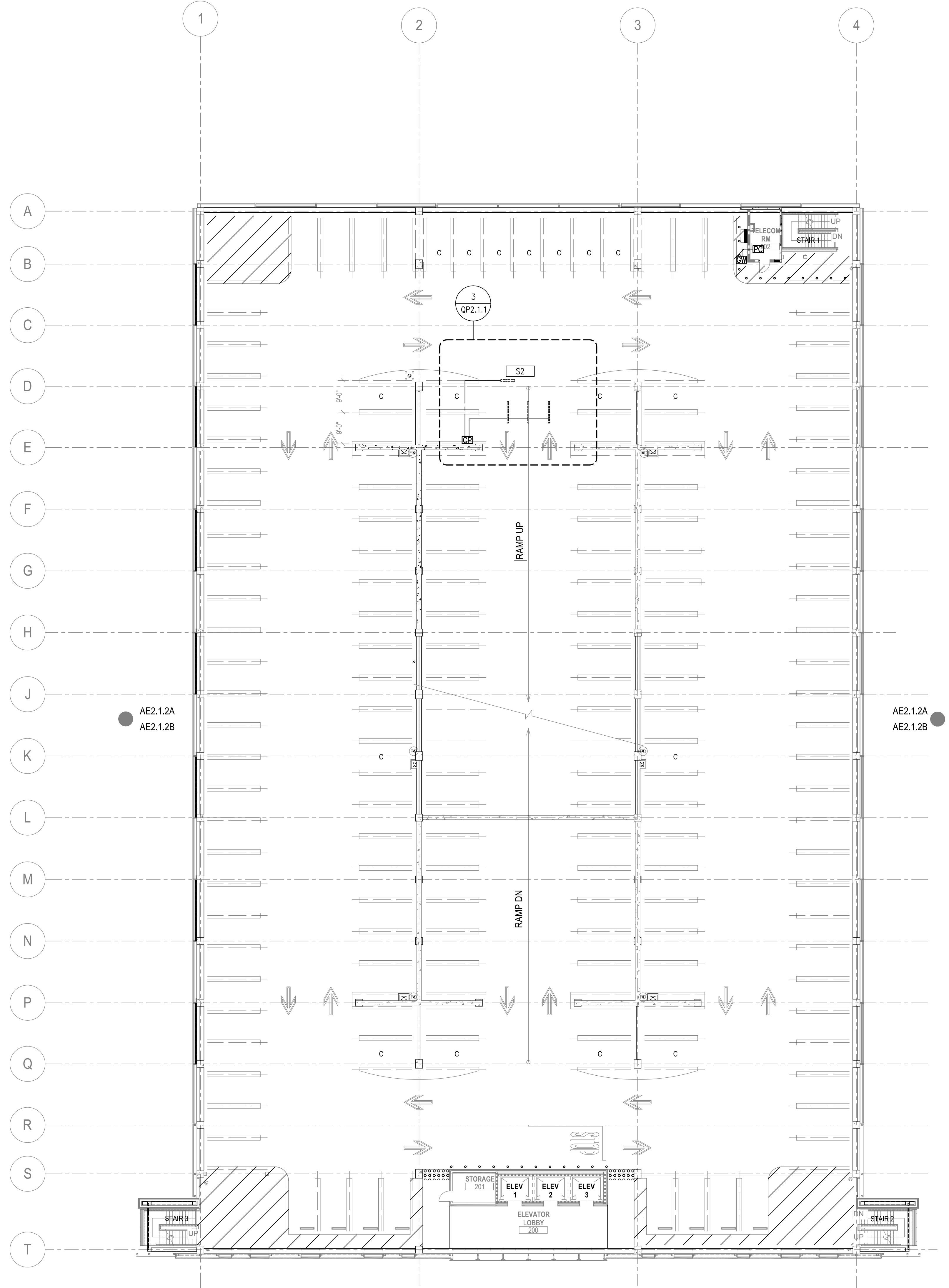


A  
B  
C  
D  
E  
F

three inches = one foot  
one and one half inches = one foot  
one inch = one foot  
three quarters inch = one foot  
one half inch = one foot  
three eighths inch = one foot  
one quarter inch = one foot  
one eighth inch = one foot



- LEGEND :
- COMMUNICATION POINT
  - COMPUTER
  - GATEWAY TO COMPUTER (PROVIDE 115V, 1AMP)
  - CONDUIT, SEE ELECTRICAL FOR SIZE & ROUTING
  - ULTRASONIC DIRECTIONAL SENSOR
  - DYNAMIC SIGN

SHEET NOTES

KEYNOTES

CONSTRUCTION DOCUMENTS

<p>VA FORM 08-6231</p>		<p>CONSULTANTS:</p> <p><b>IPD</b> Alameda Irvine Los Angeles Sacramento</p> <p>Architecture / Engineering / Consulting 1201 Marina Village Parkway Suite 100 Alameda, CA 94501 Telephone 510 473 0300 Fax 510 473 0310</p>		<p>Seals and Signatures</p> <p></p>		<p>ARCHITECT/ENGINEERS:</p> <p><b>SMITHGROUP</b> architecture engineering interiors planning 301 BATTERY STREET, 7TH FLOOR SAN FRANCISCO, CA 94111 T 415.227.0100 F 415.908.0862 www.smithgroup.com</p> <p>Associate Architect: <b>The Design Partnership LLP</b> Architects + Planners 1412 VAN NESS AVE., 2ND FLOOR SAN FRANCISCO, CA 94109 T 415.777.3737 F 415.777.3476 www.dpsf.com</p>		<p>Drawing Title <b>PARKING CONTROL EQUIPMENT SECOND LEVEL PLAN</b></p> <p>Approved: Project Director </p>		<p>Project Title CENTERS FOR AMBULATORY CARE, POLYTRAUMA AND BLIND REHABILITATION PARKING STRUCTURE 2</p> <p>Location 3801 Miranda Ave., Palo Alto CA</p> <p>Date 01 FEB 2013</p> <p>Checked <b>TWSH</b></p> <p>Drawn <b>RSC</b></p>		<p>Project Number 640-424</p> <p>Building Number 701</p> <p>Drawing Number <b>QP1.1.2</b></p> <p>Office of Construction and Facilities Management </p>	
------------------------	--	--	--	-------------------------------------	--	--	--	--	--	--	--	--	--