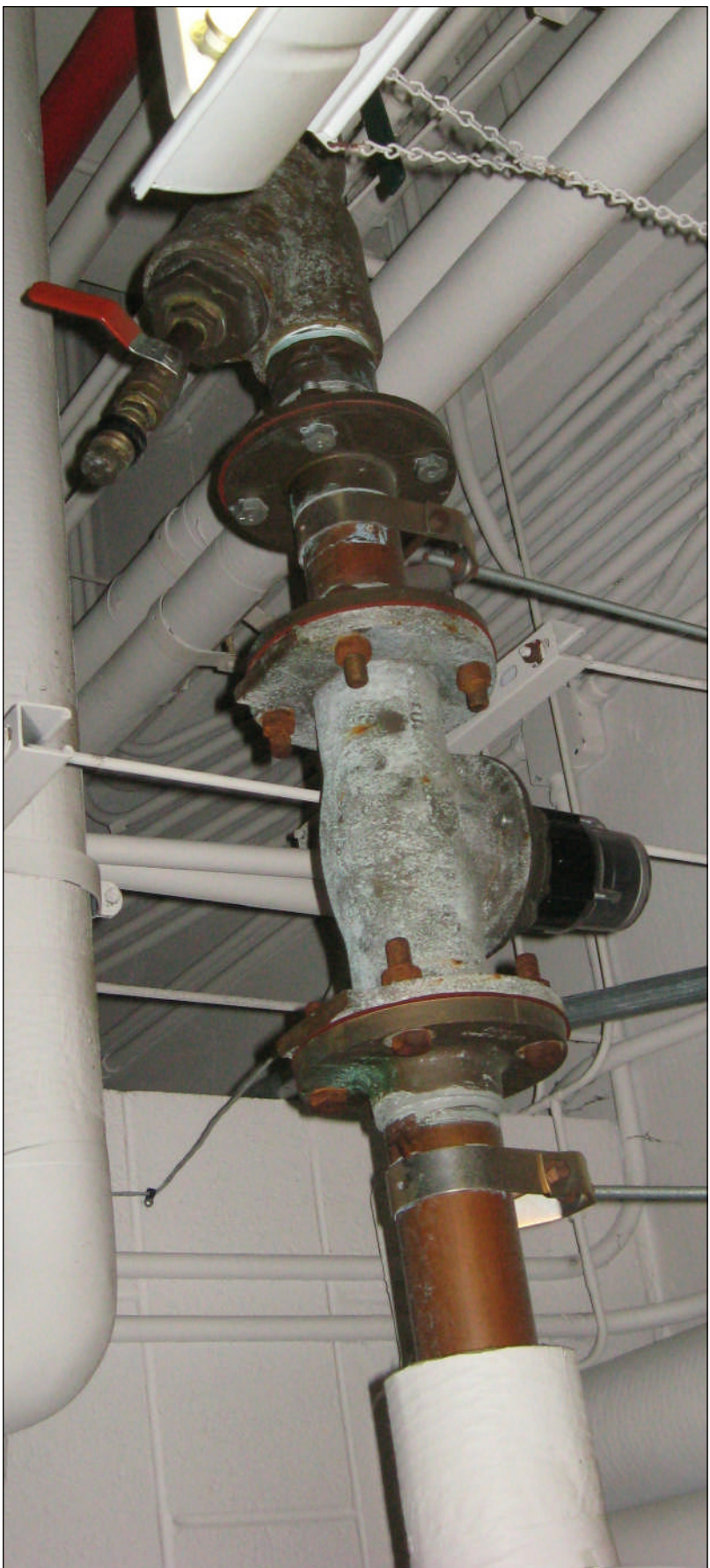


MECHANICAL SUPPORT CO2

GROUND FLOOR MECHANICAL ROOM
SCALE: 1/4" = 1'-0"



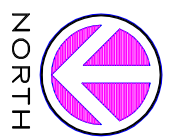
VIEW 1 - WATER METER AND STRAINER

- 1. REPLACE EXISTING 3" STRAINER AND BLOWDOWN, AND 3" WATER METER AS SHOWN MATCHING EXISTING IN COMPATIBILITY AND OPERATION
- 2. REPLACE INSULATION AND ADD NEW WHERE WORK IS ACCOMPLISHED.



VIEW 2 - BACKFLOW PREVENTERS AT R.O. SYSTEM

- 1. REPLACE EXISTING 1-1/2" DUAL BACKFLOW RPZ ASSEMBLY WITH NEW MATCHING EXISTING STYLE REMOVED.
- 2. INSTALLER MUST BE AN APPROVED INSTALLER AND CERTIFIED OF BACKFLOW ASSEMBLIES IN THE STATE OF WEST VIRGINIA.



<div><div></div><div>UNITED STATES DEPARTMENT OF VETERANS AFFAIRS VA MEDICAL CENTER - 1940 SPRING VALLEY DRIVE - HUNTINGTON WV 25704</div></div>				PROJECT TITLE: Upgrade Mechanical & Electrical Systems B23R		APPROVED: :	
DRAWING TITLE: Ground Floor Mechanical Room				BUILDING: 23R		DRAWING NUMBER: 2	
APPROVED: COLIN SMITH III CHIEF ENGINEERING SERVICE				PROJECT NUMBER: 581-12-105		DATE: April 2012	
APPROVED: SUZANNE L. JENSEN, MBA, VHA-CM ASSOCIATE MEDICAL CENTER DIRECTOR				DRAWN: STEVE BOYES		DIVG. OF	
						APPROVED: :	