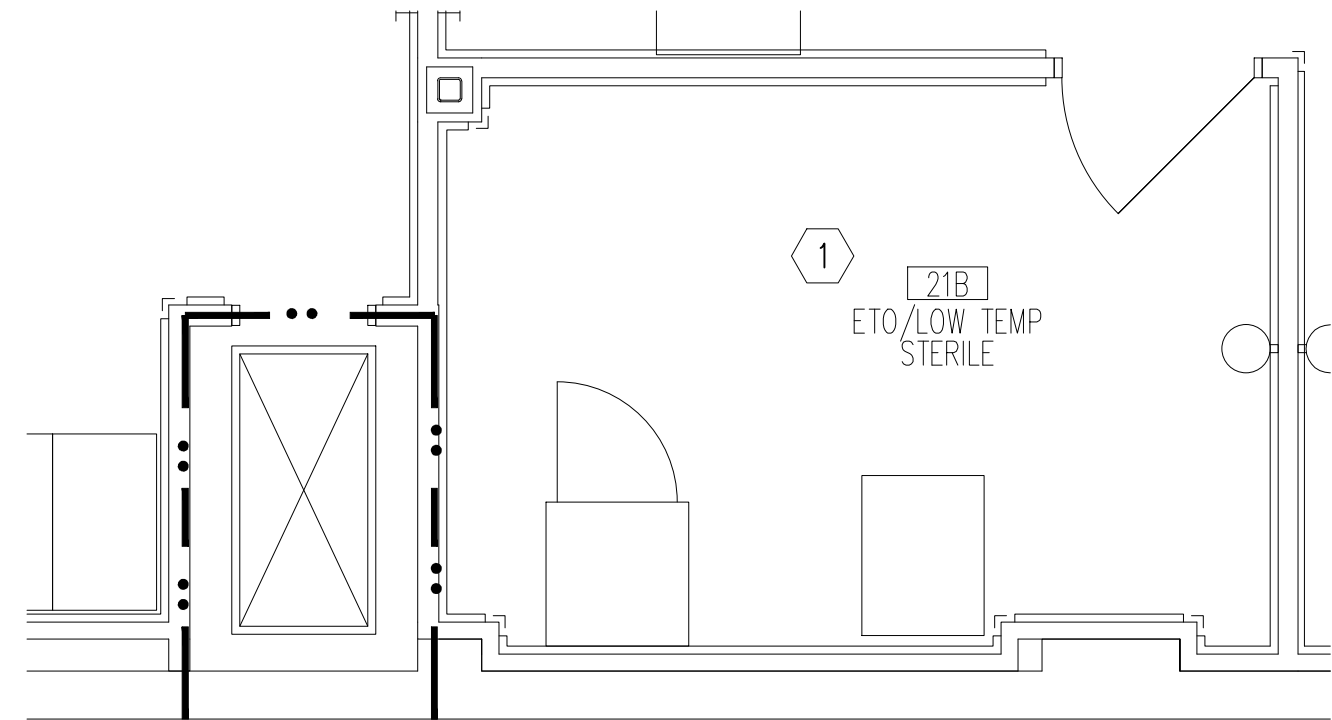
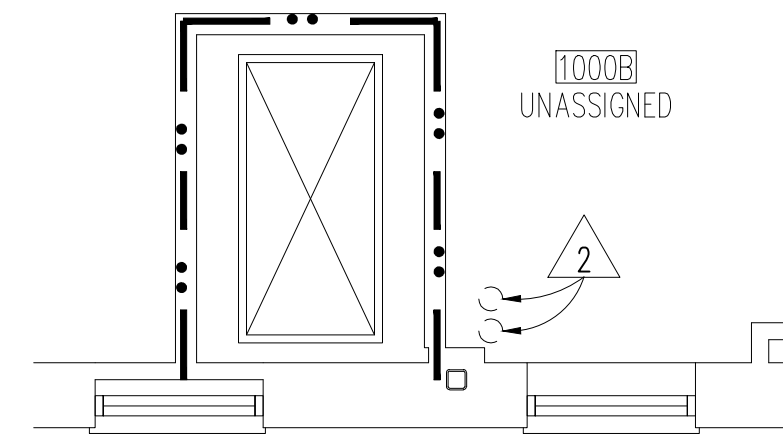


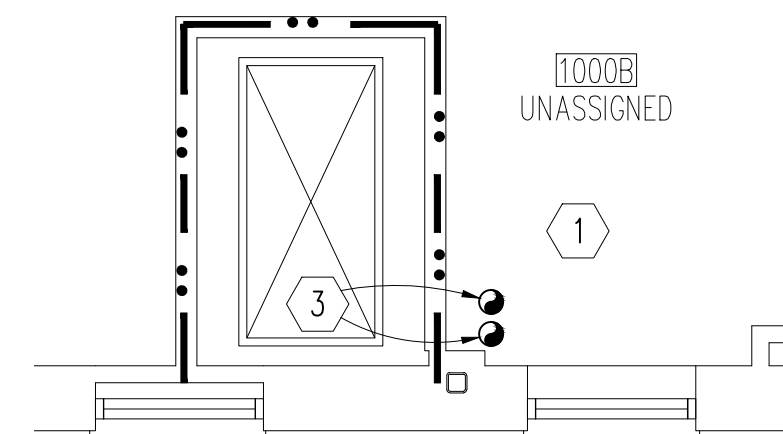
BASEMENT DEMO.
1/4"=1'-0"



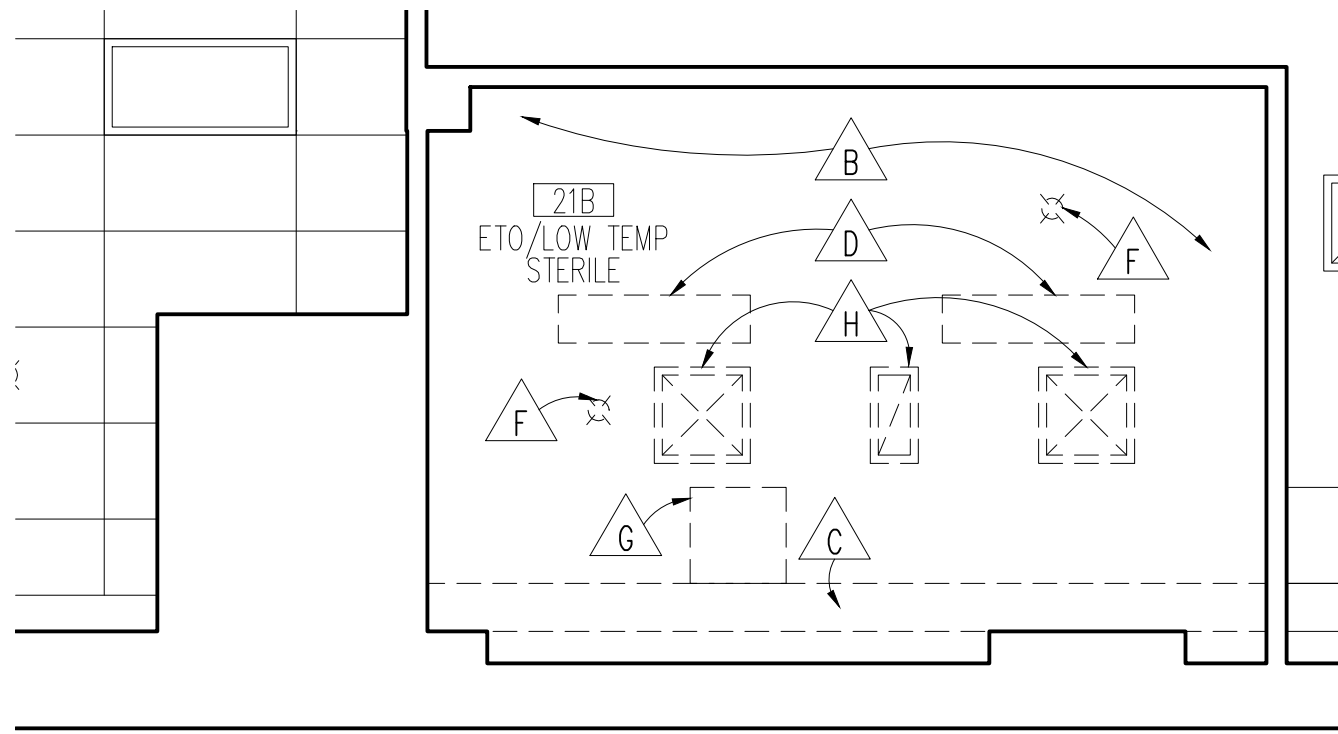
BASEMENT REMOD.
1/4"=1'-0"



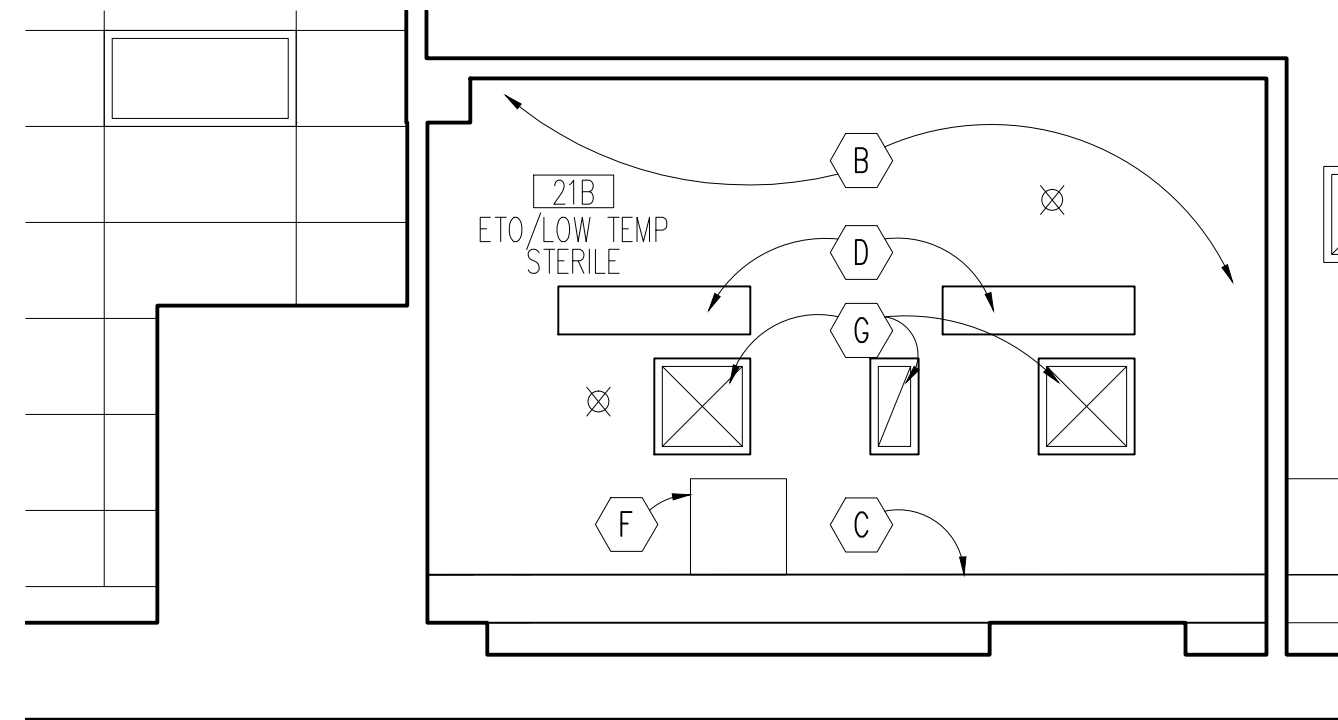
FIRST FL. DEMO.
1/4"=1'-0"



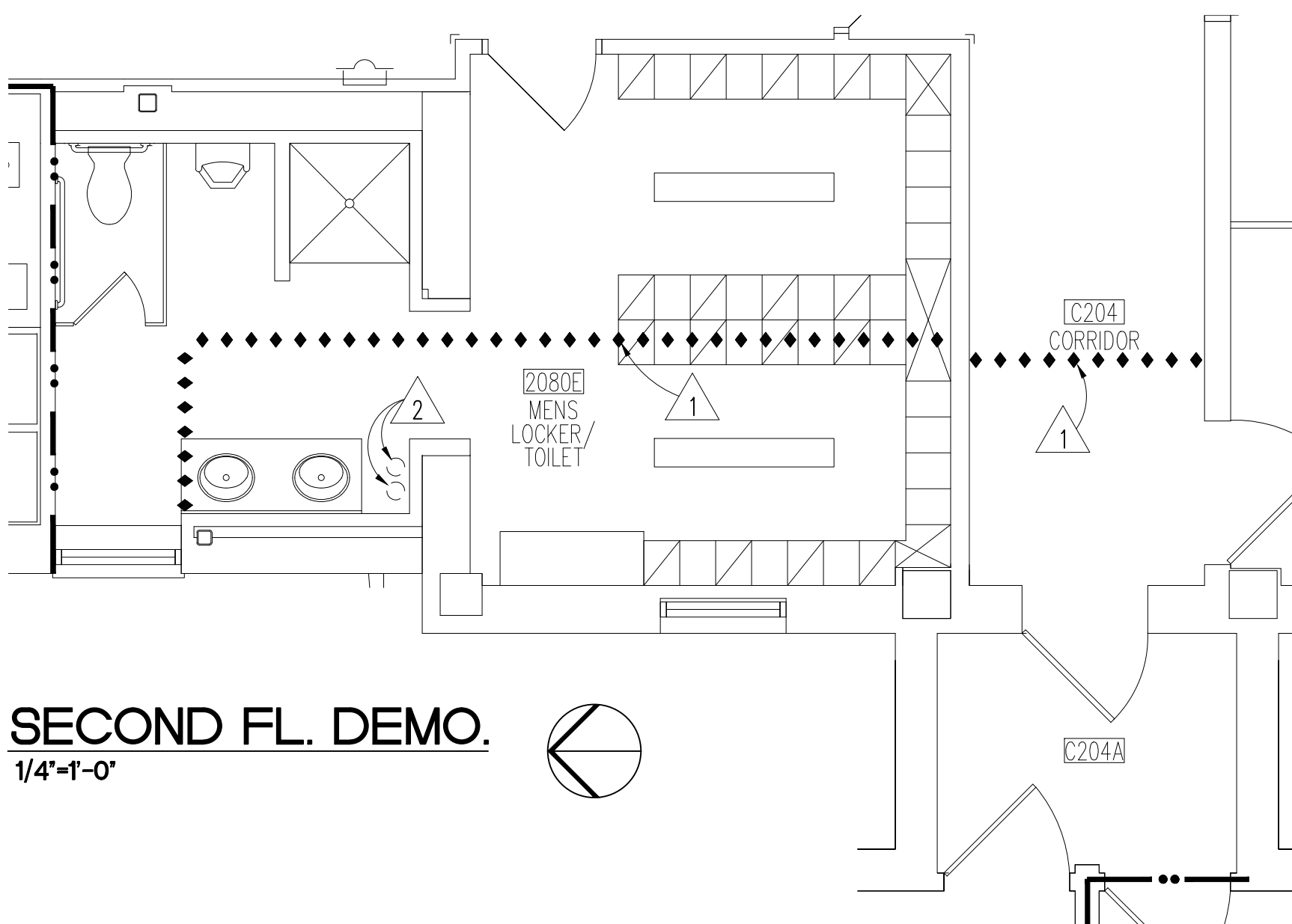
FIRST FL. REMOD.
1/4"=1'-0"



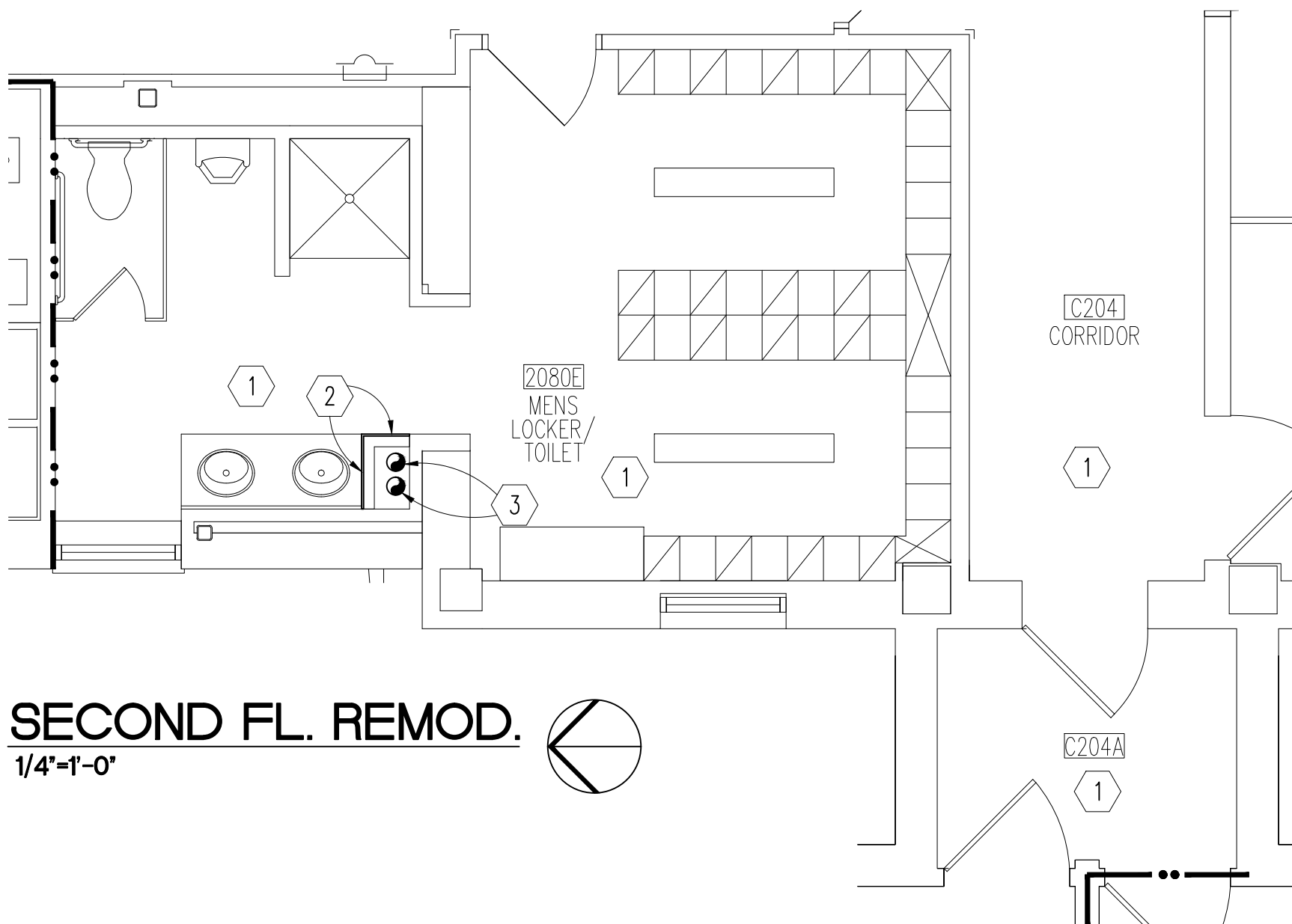
BASEMENT CLG. DEMO.
1/4"=1'-0"



BASEMENT CLG. REMOD.
1/4"=1'-0"



SECOND FL. DEMO.
1/4"=1'-0"



SECOND FL. REMOD.
1/4"=1'-0"

PLAN DEMO. LEGEND

GENERAL:

- REFER TO MECHANICAL DRAWINGS FOR RELATED MECHANICAL CONSTRUCTION.
- REFER TO ELECTRICAL DRAWINGS FOR RELATED ELECTRICAL CONSTRUCTION.
- PROVIDE TEMPORARY CONSTRUCTION BARRIER.
- CORE DRILL OPENINGS THROUGH EXISTING FLOOR SYSTEM FOR NEW VENT PIPES. DO NOT GO THROUGH BEAMS OR PURLINS BUT KEEP AS TIGHT AS POSSIBLE TO WALLS. PROVIDE MEANS TO PREVENT DEBRIS AND WATER FROM CONTAMINATING ROOM BELOW WITH PARTICULAR CARE AT CEILING OF 21B.
- CUT OPENINGS THRU METAL ROOF AND ROOF SHEATHING FOR NEW VENT PIPES. AVOID CUTTING THROUGH RAFTERS OR STANDING SEAMS.
- GENERAL CONTRACTOR SHALL MARK OUTLINE OF OUTSIDE FACE OF CHASE WALL ON FLOOR, AND SHALL OBTAIN THE SERVICES OF A LICENSED ABATEMENT WORKER TO REMOVE THE NON FRIABLE CATEGORY 1 MATERIAL USING STANDARD O&M PROCEDURES TO ALLOW FOR CORE DRILLING AND PLACEMENT OF ETO VENTS AND SETTING OF CHASE WALL ON ABATED SURFACES.

PLAN REMO. LEGEND

GENERAL:

- REFER TO MECHANICAL DRAWINGS FOR RELATED MECHANICAL CONSTRUCTION.
- REFER TO ELECTRICAL DRAWINGS FOR RELATED ELECTRICAL CONSTRUCTION.
- PATCH TO MATCH FINISHES. SEE SCHEDULE.
- 2 HR RATED SHAFT WALL. 2 LAYERS 5/8" TYPE 'X' FIRE RATED GWB ON 4" C-H STUDS @ 16" WITH 1" COREBOARD WITH FULL THICKNESS ROCKWOOL INSULATION IN CAVITY.
- NEW VENT PIPE, FIRE SEALANT PERIMETER AT FLOOR.
- GOOSENECK. SEE MECH. DWGS. SEE DETAIL 1/X1.

CLG. DEMO. LEGEND

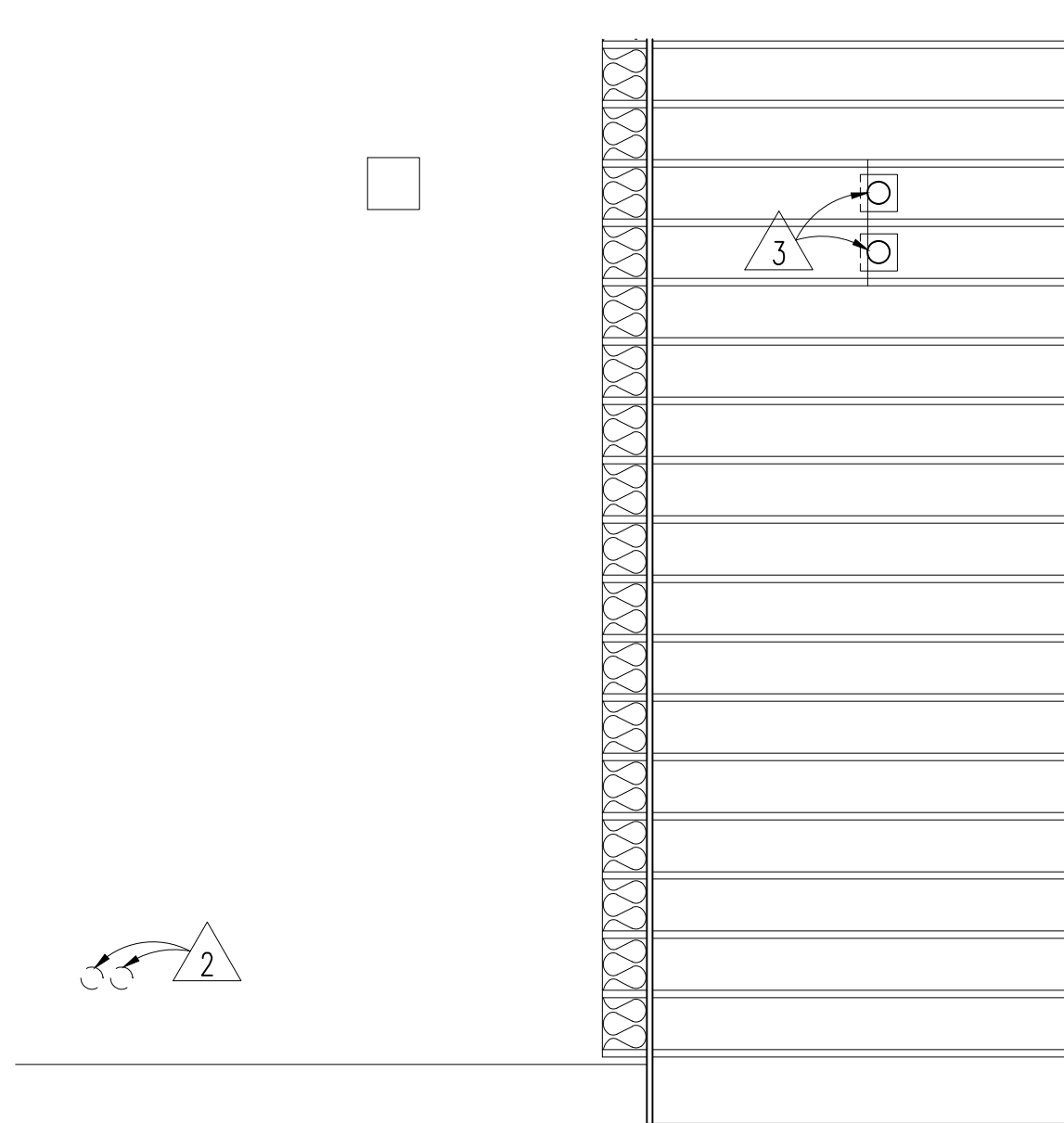
GENERAL:

- REFER TO MECHANICAL DRAWINGS FOR RELATED MECHANICAL CONSTRUCTION.
- REFER TO ELECTRICAL DRAWINGS FOR RELATED ELECTRICAL CONSTRUCTION.
- REMOVE SUSP. ACOUSTICAL TILE & CEILING GRID AS INDICATED.
- REMOVE GWB CEILING AS REQUIRED FOR WORK ABOVE CEILING.
- REMOVE RADIANT PANEL AS INDICATED.
- REMOVE FLUORESCENT LIGHT FIXTURE. SALVAGE FOR REUSE.
- REMOVE EXIT SIGN. SALVAGE FOR REUSE.
- SPRINKLER HEAD REMAINS.
- REMOVE ACCESS PANEL. SALVAGE FOR REUSE.
- REMOVE SUPPLY/RETURN AIR DIFFUSER. SALVAGE FOR REUSE.

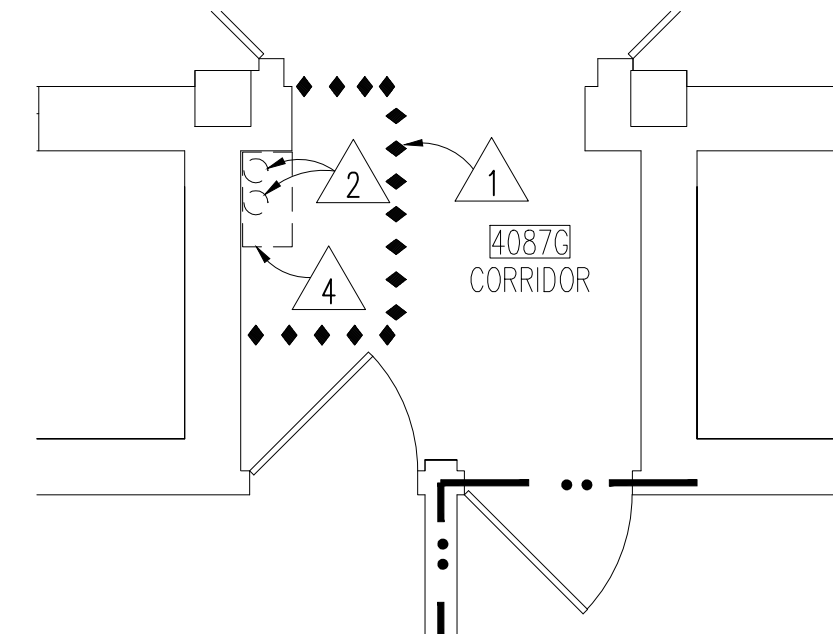
CLG. LEGEND

GENERAL:

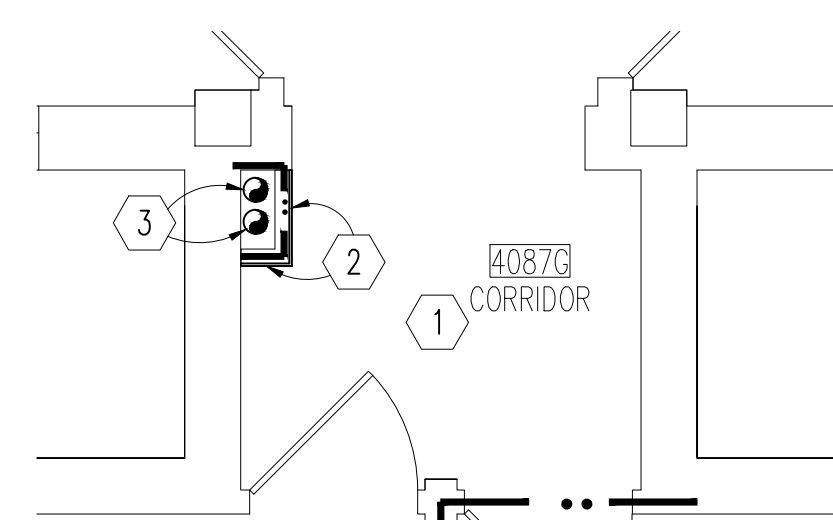
- REFER TO MECHANICAL DRAWINGS FOR RELATED MECHANICAL CONSTRUCTION.
- REFER TO ELECTRICAL DRAWINGS FOR RELATED ELECTRICAL CONSTRUCTION.
- PATCH TO MATCH ACOUSTICAL TILE & GRID AS NEEDED.
- PATCH TO MATCH GWB CEILING.
- INSTALL RADIANT PANEL.
- INSTALL SALVAGED FLUORESCENT LIGHT FIXTURE.
- INSTALL SALVAGED EXIT SIGN.
- INSTALL SALVAGED ACCESS PANEL.
- INSTALL SALVAGED SUPPLY/RETURN AIR DIFFUSER.



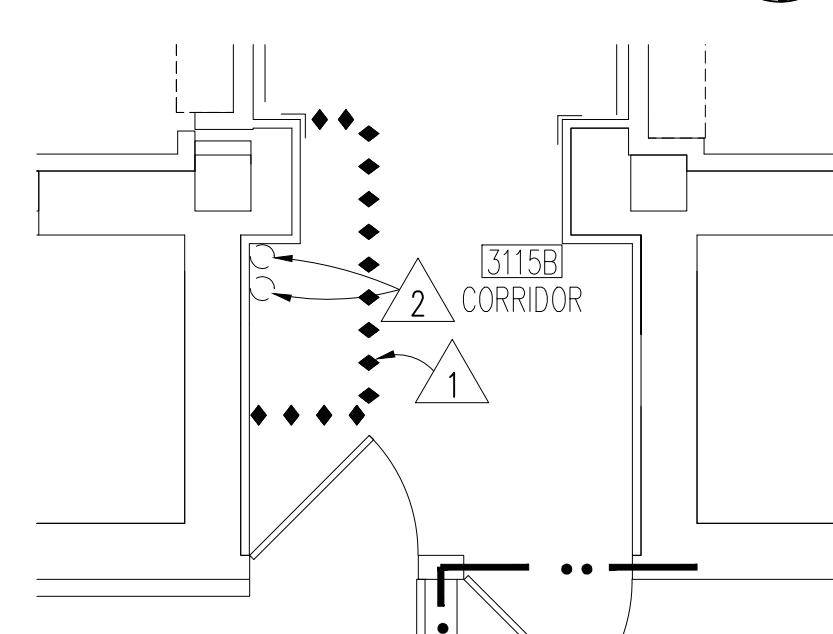
ATTIC/ROOF DEMO.
1/4"=1'-0"



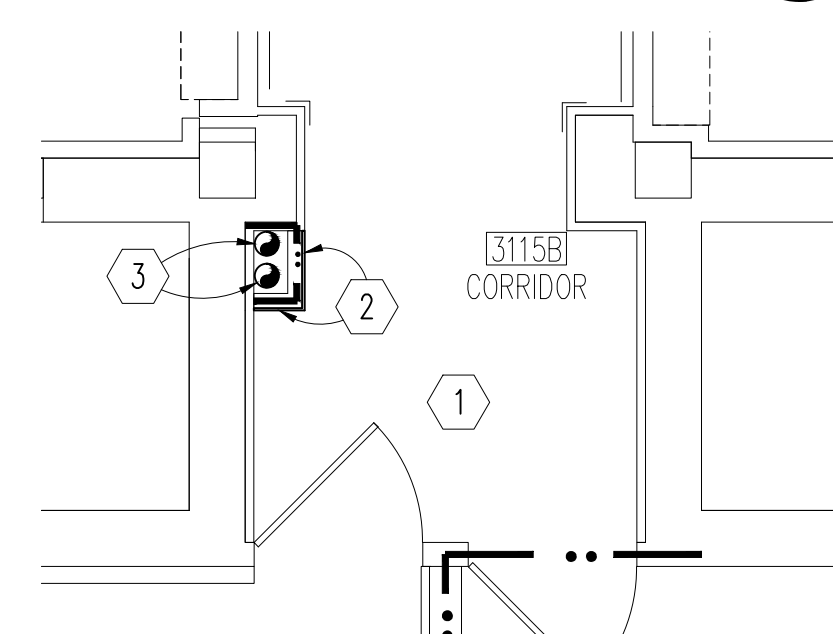
FOURTH FL. DEMO.
1/4"=1'-0"



FOURTH FL. REMOD.
1/4"=1'-0"



FOURTH FL. CLG. DEMO.
1/4"=1'-0"



FOURTH FL.