

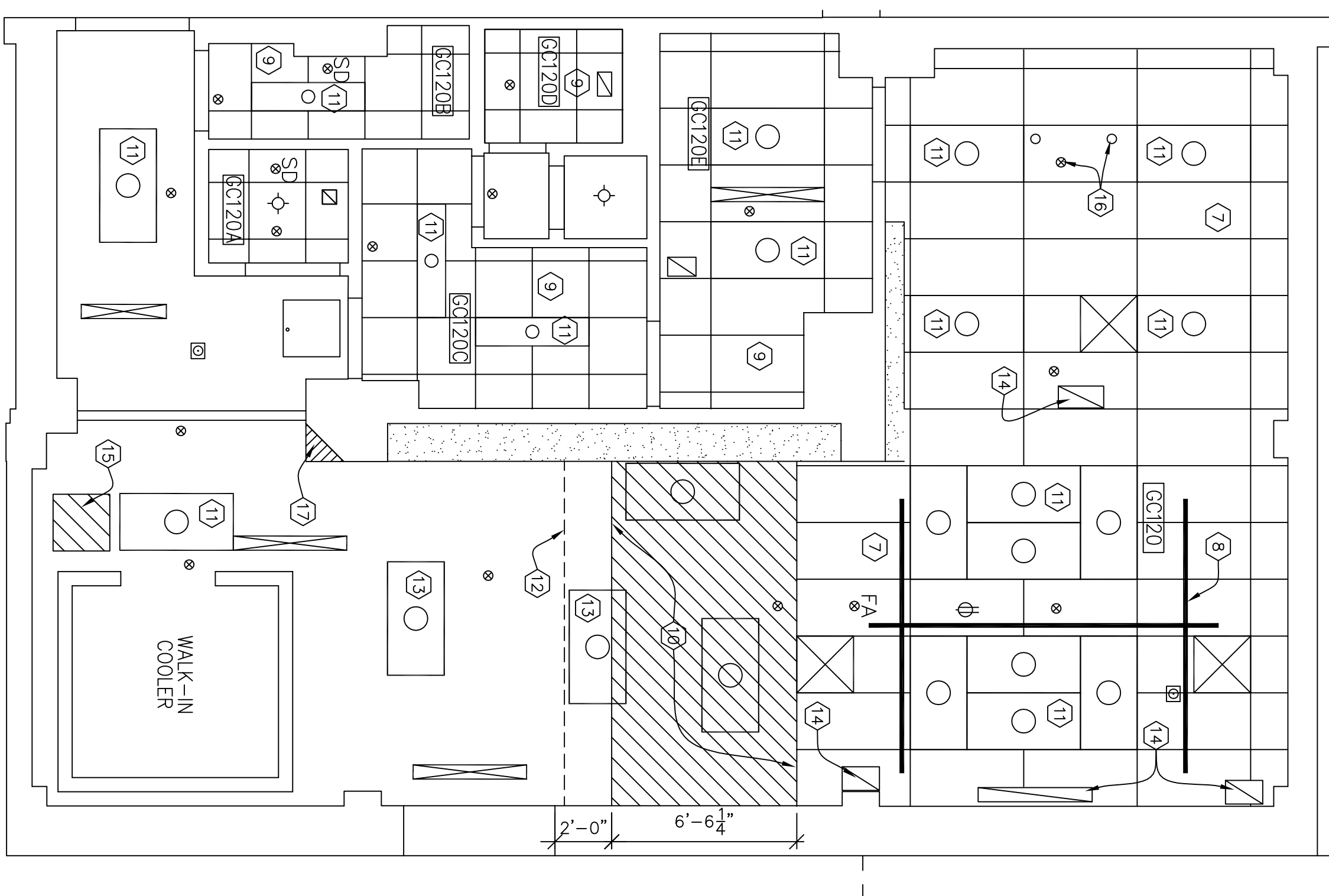
DEMOLITION FLOOR PLAN

SCALE: 1/4" = 1'-0"

NORTH

DEMOLITION NOTES

- 1 PATCH RESINOUS FLOORING AREAS (EXISTING & AFTER DEMOLITION) AS REQUIRED TO APPLY NEW EPOXY RESIN FLOOR FINISH.
- 2 PATCH AND PAINT ALL INTERIOR WALLS IN ENTIRE MORGUE. REMOVE WALL HUNG ITEMS AND STORE APPROPRIATELY AS DIRECTED BY COR FOR RE-INSTALLATION AS REQUIRED FOR NEW FINISH. SEE ROOM FINISH SCHEDULE.
- 3 REMOVE EXIST VCT FLOORING AND ADHESIVES WHERE NOTED. PATCH AS REQUIRED TO RECEIVE NEW FINISHES.
- 4 REMOVE EXIST CASEWORK, SHELVES, AUTOPSY FIXTURES & APPLIANCES. PLUMBING CONTRACTOR TO REMOVE EXIST. PLUMBING FIXTURES. REFER TO PLUMBING DRAWING FOR DETAILS.
- 5 FLOOR ACCESS DOOR REQUIRES THE REMOVAL OF EXIST VCT FLOORING AND ADHESIVES. PATCH AS REQUIRED TO RECEIVE NEW FINISHES.
- 6 TEMPORARILY REMOVE METAL RAMP. PATCH RESINOUS FLOORING AREAS AS REQUIRED TO APPLY NEW EPOXY RESIN FLOOR FINISH.
- 7 REMOVE & STORE EXISTING HARD SURFACED SUSPENDED TILE CEILING & GRID IN AUTOPSY ROOM ONLY AS NEEDED TO PERFORM WORK ABOVE CEILING LINE. REINSTALL EXISTING UNDAMAGED TILES ONLY. EXISTING SPRINKLER HEADS AND SMOKE DETECTORS ARE TO REMAIN. PROTECT SPRINKLER SYSTEM FROM DAMAGE. PROTECT OTHER MISC. CEILING MOUNTED ITEMS SUCH AS ANTENNAS, MOTION SENSORS, ETC. FOR RE-USE. CONTACT COR FOR GUIDANCE TO PROTECT VA HANDWORK.
- 8 REMOVE CEILING MOUNTED PATIENT LIFT FROM 1ST FLOOR UNDER DECK. CONSULT WITH VA FUTURE VA USE.
- 9 REMOVE SUSPENDED TILE CEILINGS FOR REPLACEMENT WHERE INDICATED. EXISTING SPRINKLER HEADS & SMOKE DETECTORS ARE TO REMAIN. PROTECT SPRINKLER SYSTEM FROM DAMAGE. PROTECT OTHER MISC.
- 10 REMOVE DRYWALL CEILING & STRUCTURAL FRAMING TO RECEIVE NEW SUSPENDED CEILING TILE & GRID. SEE FINISH SCHEDULE. EXISTING SPRINKLER HEADS & SMOKE DETECTORS ARE TO REMAIN. PROTECT SPRINKLER SYSTEM FROM DAMAGE. PROTECT OTHER MISC.
- 11 REMOVE ALL EXISTING CEILING MOUNTED FLORESCENT LIGHTING FIXTURES. 1X4 (3 EA) & 2X4 (18 EA).
- 12 REMOVE EXISTING CURTAIN TRACK. PATCH & PAINT DRY WALL CEILING TO RECEIVE NEW PAINT. NEW FINISH.
- 13 REMOVE EXISTING 2X4 LIGHT FIXTURE. PATCH, PAINT DRY WALL CEILING AS REQUIRED FOR NEW FINISH.
- 14 REMOVE STAINLESS STEEL DUCWORK. FITTED CEILING TILE & GRID.
- 15 REMOVE SECTION OF DRYWALL CEILING T.B.D. TO INSTALL NEW ACCESS HATCH. PATCH & PAINT AS REQUIRED FOR NEW FINISH.
- 16 RELOCATE SPRINKLER HEAD & (2) CEILING MOUNTED CONTROL DEVICES THIS LOCATION.
- 17 CUT OFF WALL SECTION CORNER (15" EACH WAY) AS SHOWN. PATCH FLOOR, WALL & CEILING TO RECEIVE NEW FINISHES.



DEMOLITION CEILING PLAN

SCALE: 1/4" = 1'-0"

NORTH

UNITED STATES DEPARTMENT OF VETERANS AFFAIRS
VA MEDICAL CENTER - 1540 SPRING VALLEY DRIVE - HUNTINGTON WV 25704

DRAWING TITLE:		PROJECT TITLE:	
DEMOLITION PLAN		MORGUE IMPROVEMENTS	
APPROVED:	CHRIS ECKLES	BUILDING:	1S
ASST. CHIEF, ENGINEERING		PROJECT NUMBER:	10-106
JOHN KLIM		DATE:	APR '12
CHIEF, ENGINEERING		DRAWN:	STEVE ELROD
		DWG.	A1