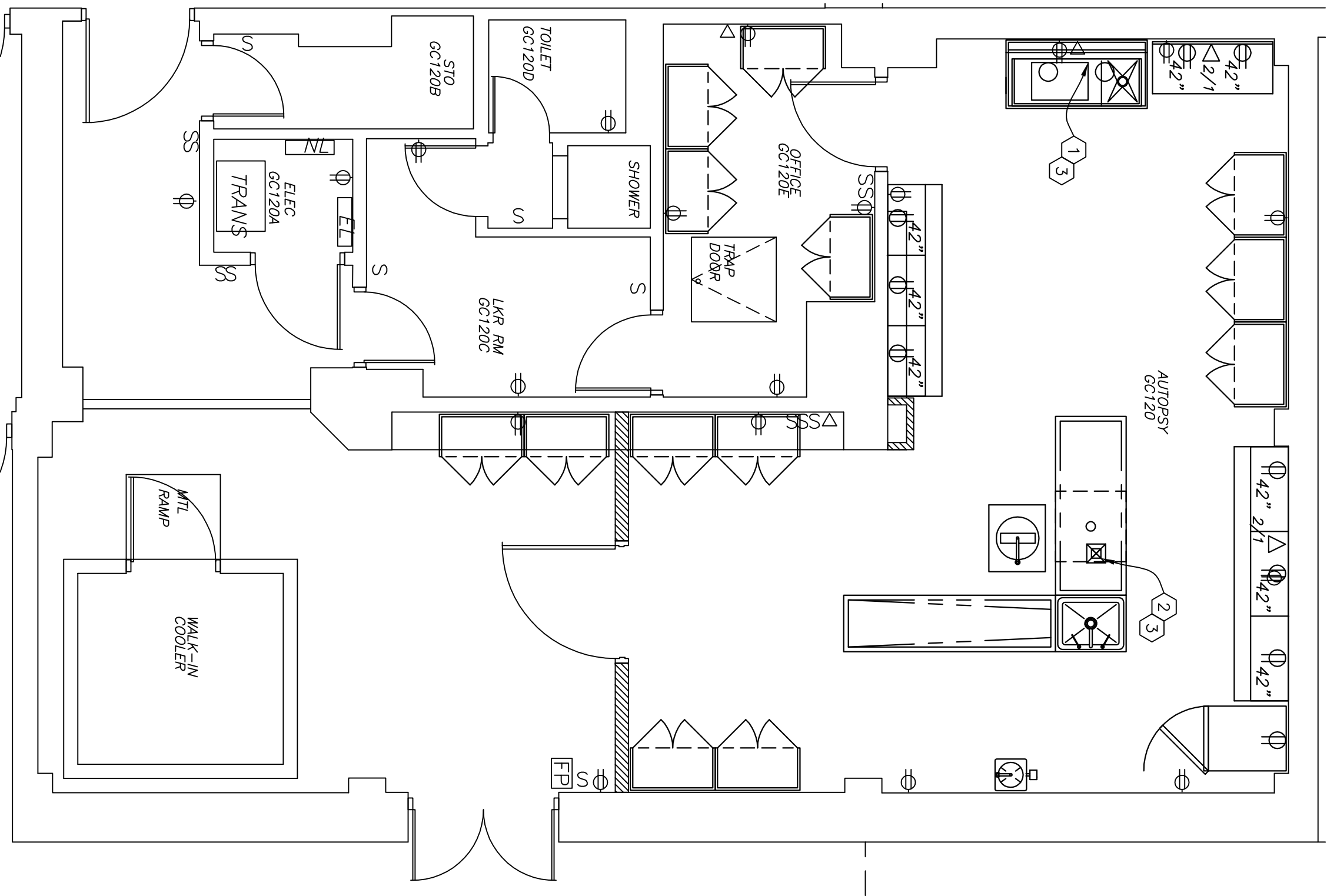


TELEPHONE/DATA OUTLET DETAIL

SCALE: NONE



POWER / DATA PLAN

SCALE: 1/4" = 1'-0"



GENERAL ELECTRICAL / DATA NOTES:

- ALL RECEPTACLES MOUNTED BACK OF COUNTERTOP SPACES WILL BE MOUNTED ABOVE COUNTERTOP FOR USE WHERE NOTED 42". RECEPTACLE FACE PLATE COVERS SHALL BE STAINLESS STEEL. EMERGENCY POWER RECEPTACLS SHALL BE STAINED RED.
- ALL ELECTRIC FIXTURES SHALL BE HOSPITAL GRADE MATERIALS.
- THE LIGHTING CONTROLS FOR ROOMS 18108b & 18109a SHALL BE A DUAL RELAY DECK/RA WALL SWITCH (MULTI-TECHNOLOGY OCCUPANCY SENSORS OSMD-MD/OD BY LEITZON MANUFACTURING CO. WWW.LEITZON.COM) OR A FLEET/ED EQUAL THESE WALL SWITCHES SHALL BE INSTALLED IN THE CENTER OF EACH DOOR. EACH SWITCH SHALL HAVE A POLE LIGHT SWITCH PLATE BY THE DOORS; ONE SWITCH CONTROLS THE OUTER PAIR OF LAMPS IN EACH FIXTURE AND ONE SWITCH IS FOR THE INNER LAMPS IN EACH OF THE LIGHT SWITCHES.
- CONTRACTOR SHALL SUBMIT SHOP DRAWINGS FOR ALL EQUIPMENT BEFORE INSTALLATION.
- OUTLET BOXES SHALL BE STEEL, 4" SQUARE 1-1/2" DEEP, W/ 1/2" DECK/RA RING WHERE RECESSED.
- WIRING SHALL BE COPPER WITH TYPE THHN INSULATION, MINIMUM SIZE #12 AWG. ALL CONDUIT IS 3/4". CONTRACTOR SHALL COORDINATE ROUTING OF WIRING WITH COR PRIOR TO INSTALLATION.
- ALL CIRCUITS SHALL HAVE A GROUNDING CONDUCTOR INSTALLED IN THE RACEWAY WITH EARTH GROUNDING CONDUCTOR (EARTH GROUNDING CONDUCTOR) SHALL BE INSTALLED. JUMPER SHALL BE INSTALLED TO CONNECT THE DECK TO THE BOX. EACH RECEPTACLE COVER PLATE SHALL HAVE A LABELED PANEL CIRCUIT # IDENTIFIER.
- ALL NEW VOICE AND DATA CABLING SHALL COORDINATE ROUTING WITH COR. NEW CABLES SHALL BE RE-INSTALLED IN 'O' RINGS ABOVE CORRIDOR CEILINGS. PROVIDE 1 NEW CAT 6 48 FOOT PATCH PANEL IN EXISTING RACK. NEW PANELS SHALL MATCH EXISTING ORTRONICS PATCH PANELS.

ELECTRICAL NOTES

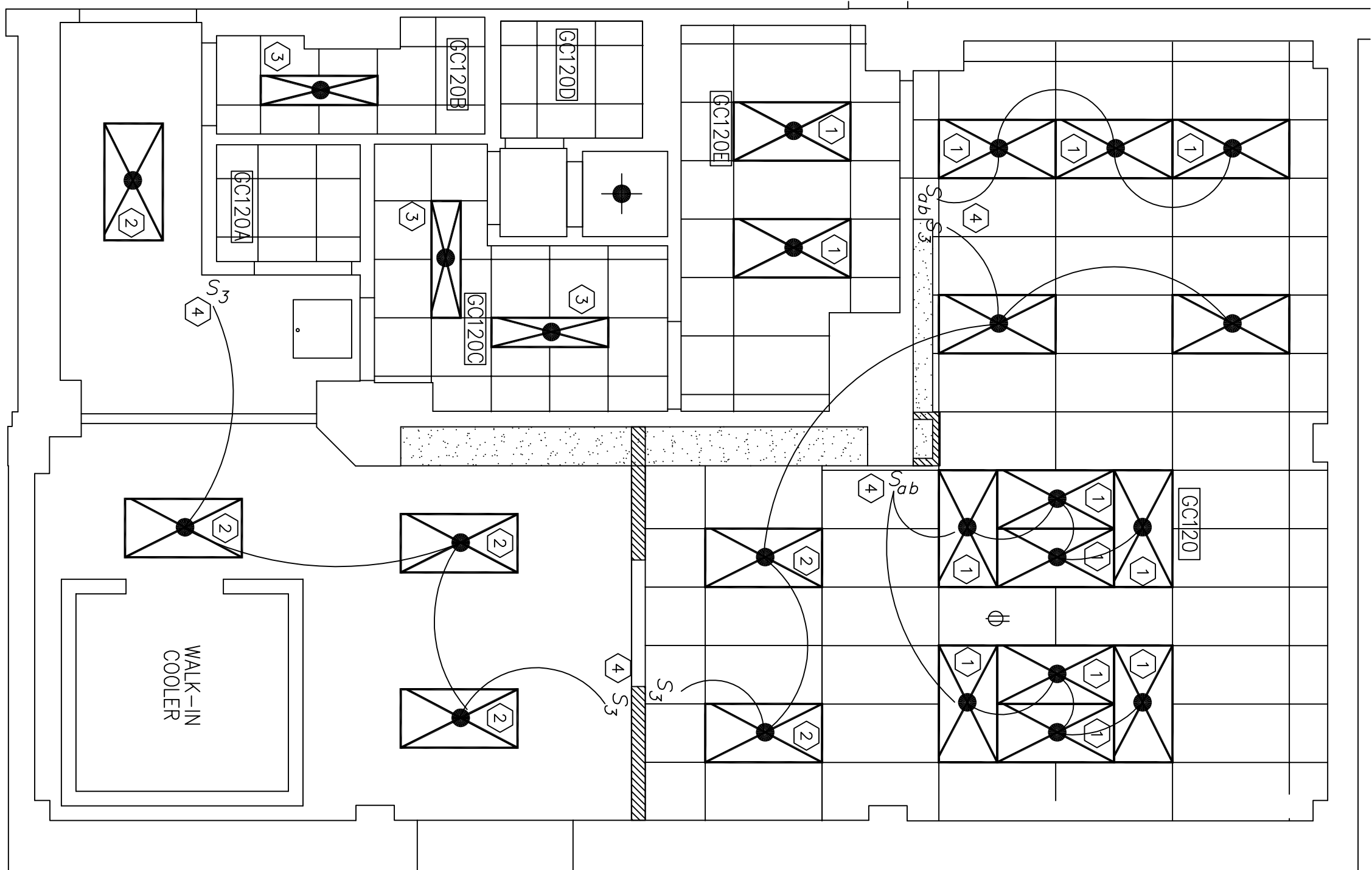
- PROVIDE NEW ELECTRIC SERVICE CONNECTIONS TO NEW GROSSING STATION AND PER MANUFACTURERS RECOMMENDATIONS.
- AUTOPSY TABLE ELECTRIC SERVICE CONNECTIONS SHALL REQUIRE UNDER CONCRETE FLOOR CIRCUIT RINGS AND UNDER FLOOR DISTRIBUTION LOCATION NOTED ON PLAN. REFER TO MANUFACTURERS OUT SHEET FOR SPECIFIC REQUIREMENTS.
- VERIFY ALL NEW RECEPTACLE & LIGHTING CIRCUIT CONNECTIONS, TIED TO EXISTING CIRCUIT PANELS ARE INSTALLED PER NEC REQUIREMENTS. COORDINATE POWER OUTGAGES WITH 24HR NOTICE.

LIGHTING NOTES

- INSTALL NEW SP8 2'x 4' STATIC ROFFER LIGHT FIXTURES. LITHONIA LIGHTING CO. MODEL # ZSP8-G-32-FW-A12-MVOLT GEBOIRS WHICH IS 4 LAMP CUSTOM BALLAST FOR BI-LEVEL SWITCHING. WWW.LITHONIA.COM OR EQUAL. ALL GROUPED FIXTURES SHALL OPERATE OUTER PAIRS OF LAMPS FROM ONE LIGHT SWITCH. INNER PAIRS OF LAMPS FROM OTHER LIGHT SWITCH.
- INSTALL NEW 2'x 4' LITHONIA AVANTE LIGHT FIXTURES. LITHONIA LIGHTING CO. TYPE DIRECT/INDIRECT MODEL # ZRTLED-2X4.
- INSTALL NEW 1'x 4' LITHONIA AVANTE LIGHT FIXTURES. LITHONIA LIGHTING CO. TYPE DIRECT/INDIRECT MODEL # RTLED-1X4.
- RELOCATE AND INSTALL NEW LIGHT SWITCHES at LOCATIONS NOTED ON PLAN. LIGHT SWITCHES NOT INDICATED ON PLAN SHALL BE CONNECTED TO EXISTING SWITCH LOCATIONS AS SHOWN ON FLOOR PLAN.

ELECTRIC/DATA LEGEND

- QUADRI-PLEX RECEPTACLE
- DUPLEX RECEPTACLE
- DUPLEX MOUNTING HEIGHT
- EMERGENCY POWER RECEPTACLE
- GROUND FAULT INTERRUPT RECEPTACLE
- DATA/COM (2 DATA, 1 COM)
- TWO POLE SWITCH
- 3 WAY SWITCH



LIGHTING PLAN

SCALE: 1/4" = 1'-0"



UNITED STATES DEPARTMENT OF VETERANS AFFAIRS
VA MEDICAL CENTER - 1540 SPRING VALLEY DRIVE - HUNTINGTON WV 25704

DRAWING TITLE: POWER / DATA & LIGHTING PLAN PROJECT TITLE: MORQUE IMPROVEMENTS

APPROVED: CHRIS ECKLES BUILDING: 1S PROJECT NUMBER: 10-106 DRAWING NUMBER: E1
ASST. CHIEF, ENGINEERING
JOHN KLIM DRAWN: STEVE ELROD DATE: APR '12 DWG.