

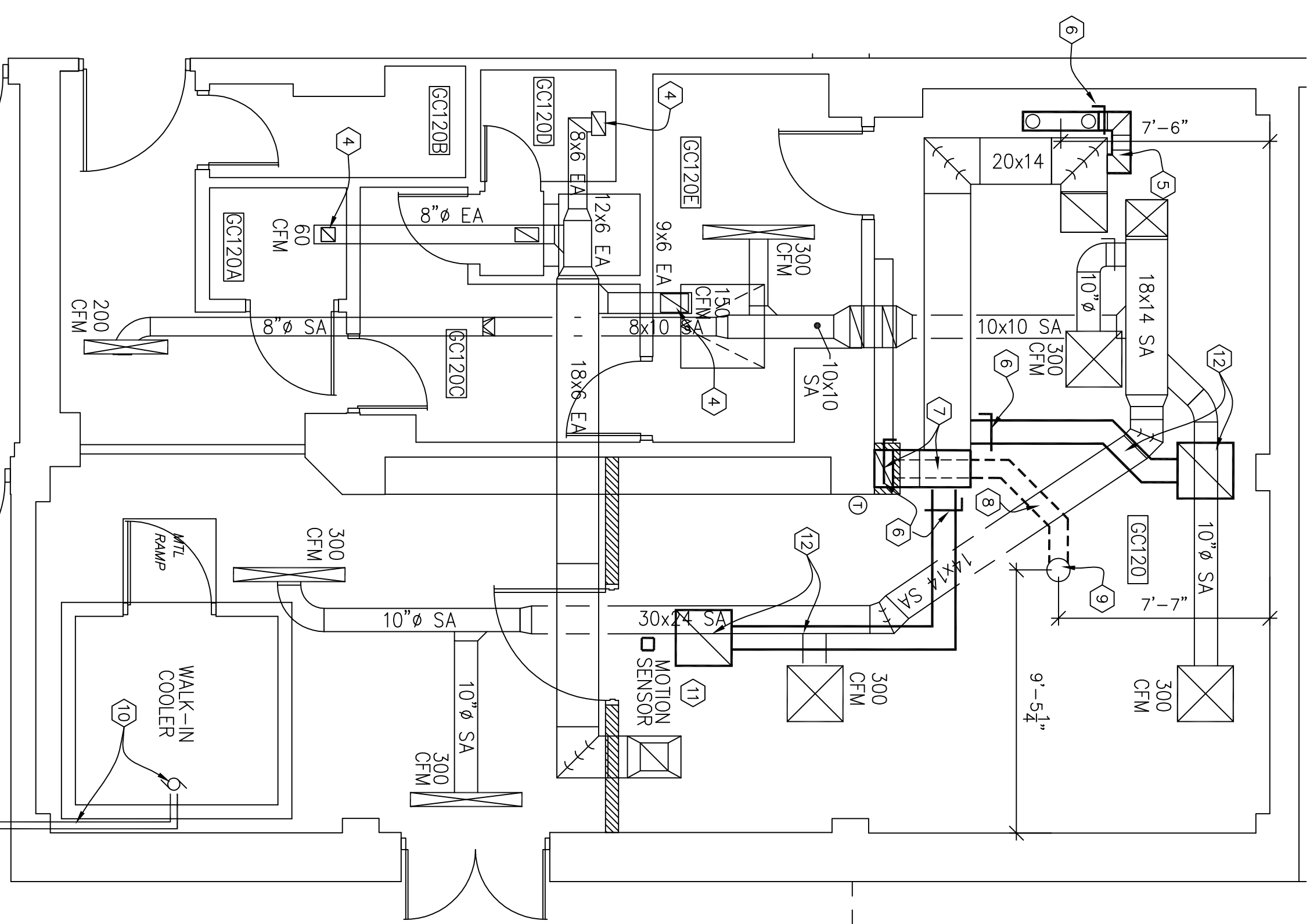
# HVAC PLAN DEMOLITION WORK

SCALE: 1/4" = 1'-0"



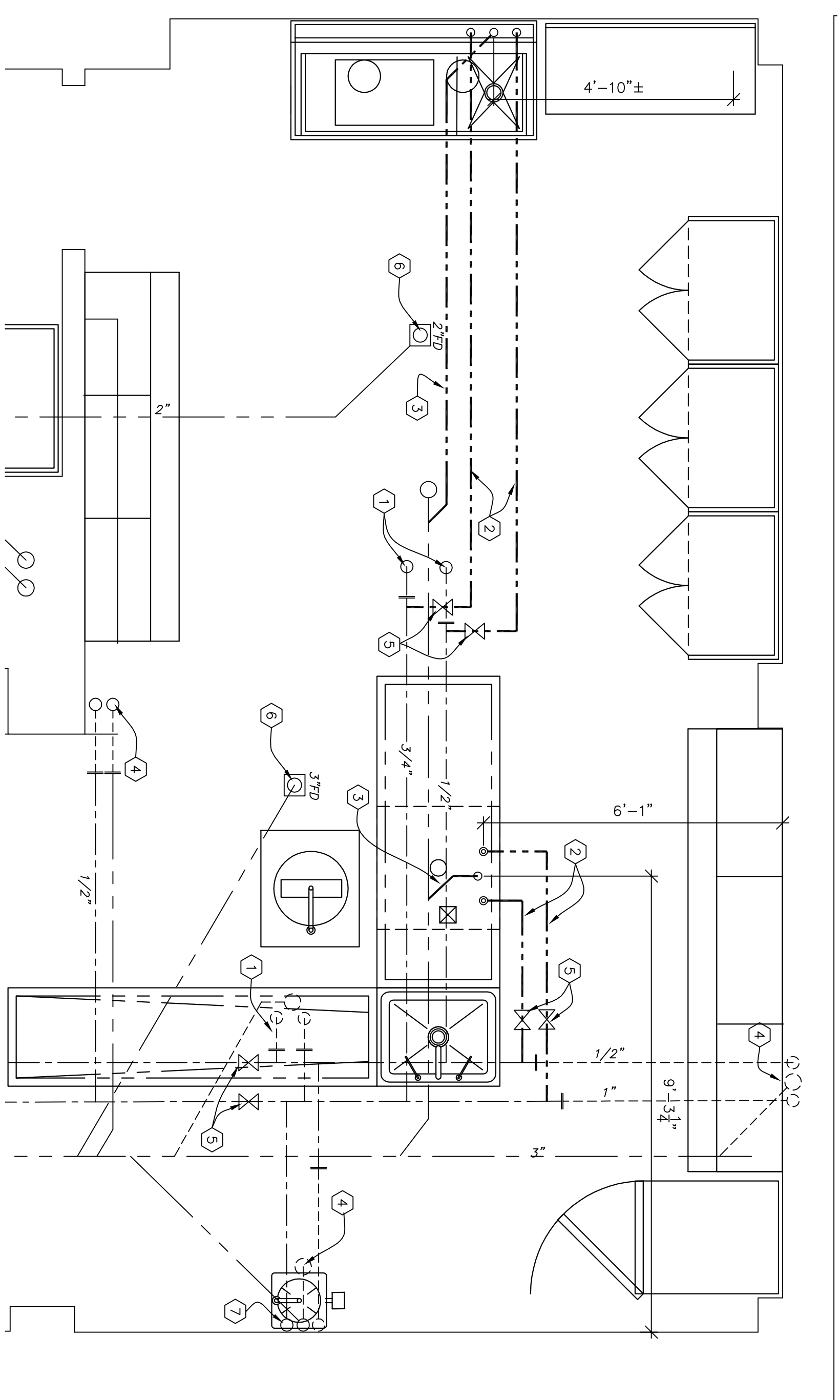
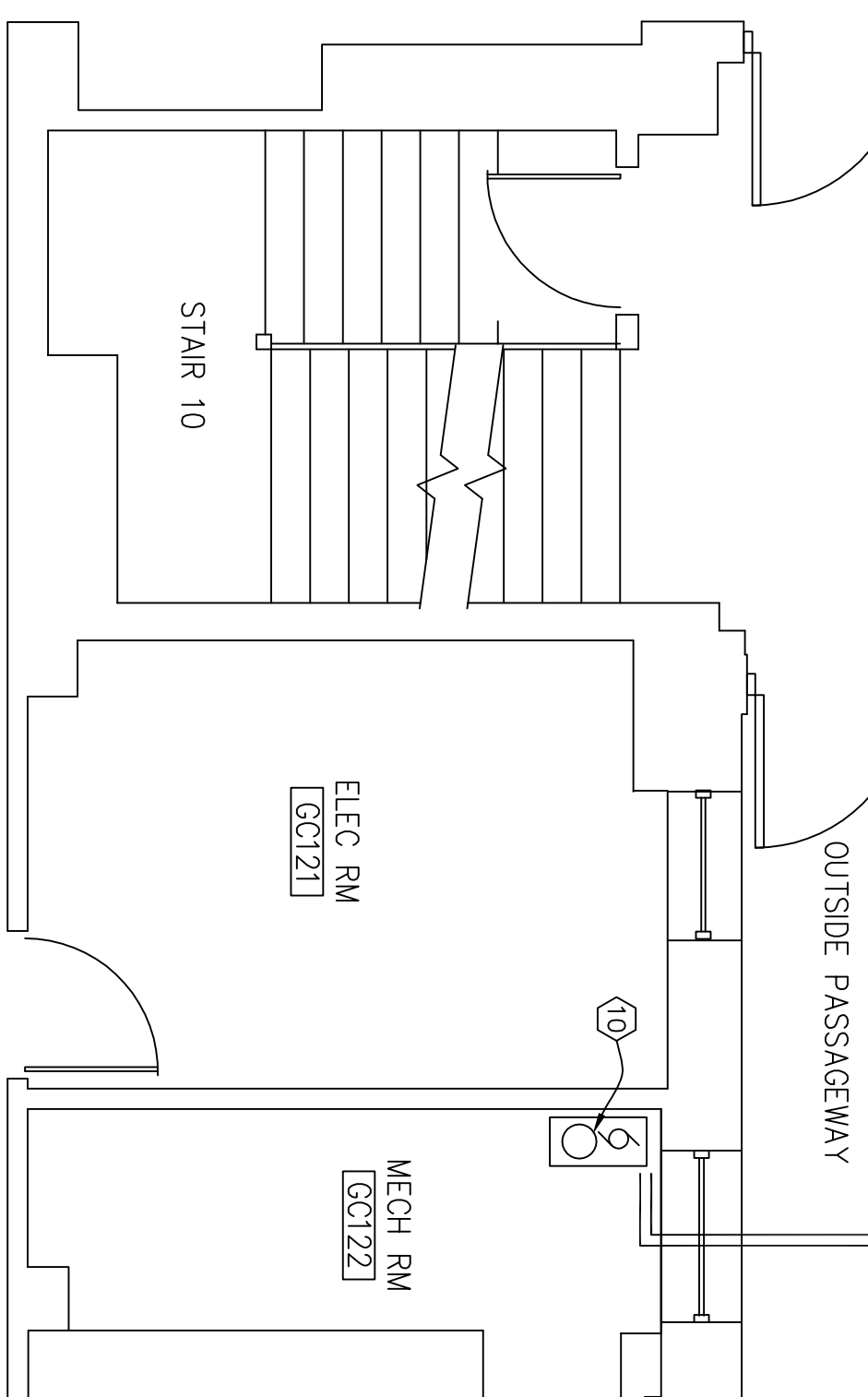
## MECHANICAL NOTES

- ① REMOVE HVAC DUCT WORK MATERIALS AS SHOWN. WORK INCLUDES ALL STAINLESS STEEL EXHAUST DUCTS, LOUVERS TO POINT INDICATED ON THE PLAN. PATCH AND PREPARE WALL & CEILING AREAS TO REMAIN. CAP & SEAL EXHAUST OPENINGS NOT USED FOR FUTURE USE.
- ② REMOVE STAINLESS STEEL EXHAUST DUCTWORK EXPOSED IN ROOM. TERMINATE REMOVAL ABOVE CEILING TO INSTALL NEW EXHAUST GRILL IN CEILING TILE.
- ③ REPLACE EXISTING ROOF MOUNTED EXHAUST FANS.
- ④ REPLACE EXISTING CEILING EXHAUST GRILLS WHERE NOTED.
- ⑤ INSTALL 10x 10x 1.6" 8" METAL EXHAUST DUCT. INCLUDES ALL MOUNTING SUPPORT HANGERS AS REQ. IN ACCORDANCE WITH LOCAL CODE. CONNECT NEW EXHAUST TO GROSSING STATION EXHAUST SYSTEM.
- ⑥ INSTALL A MANUAL CONTROL DAMPER IN NEW 8" DUCTWORK TO ADJUST/CONTROL AMOUNT OF EXHAUST AIR. RE-BALANCE AIR FLOW PER TAB
- ⑦ INSTALL 16"x 8" METAL EXHAUST DUCT FROM EXIST. EXHAUST TO WALL LINE. RUN A VERTICAL DUCT DOWN WALL & THROUGH CONCRETE FLOOR. WORK INCLUDES SAWCUTTING CONCRETE FLOOR. PROVIDE ALL MOUNTING SUPPORT HANGERS AS REQ. IN ACCORDANCE WITH LOCAL CODE.
- ⑧ UNDER GROUND FLOOR WORK. INSTALL NEW REDUCER 16"x 8" TO 12" Ø METAL EXHAUST DUCT. INSTALL 12" Ø DUCT TO AUTOPTV TABLE. WORK INCLUDES ALL MOUNTING SUPPORT HANGERS AS REQ. IN ACCORDANCE WITH LOCAL CODE.
- ⑨ SAWCUT OPENING IN CONCRETE FLOOR TO CONNECT EXHAUST DUCT TO AUTOPTV TABLE. REFER TO MFG. CUT SHEETS FOR LOCATION. TILE IN POINT. WORK INCLUDES REDUCER CONNECTIONS AND ALL MOUNTING SUPPORT HANGERS AS REQ. IN ACCORDANCE WITH LOCAL CODE.
- ⑩ COOLING SYSTEM FOR WALK-IN COOLER SHALL BE CONVERTED FROM R-12 TO R-404. REPLACE ALL COOLANT LINES, COMPRESSOR UNIT AND BLOWER COIL. HOUSED INSIDE THE COOLER. NEW LINES SHALL BE SIZED AS REQUIRED FOR THIS CONVERSION. INSTALL NEW TEMP. MONITOR METER TO WALK-IN COOLER TO MONITOR COOLER. REPLACE DOOR GASKETS WITH NEW.
- ⑪ RELOCATE EXISTING MOTION SENSOR TO LOCATION NOTED ON HVAC PROPOSED PLAN AND SENSOR TOWARDS AUTOPTV TABLE TO ACTIVATE HVAC SYSTEM.
- ⑫ INSTALL NEW 2"x2" CEILING RETURN GRILL & 10"x 6" METAL RETURN DUCTWORK. PROVIDE ALL MOUNTING SUPPORT HANGERS AS REQ. IN ACCORDANCE WITH LOCAL CODE.



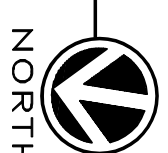
## HVAC PLAN PROPOSED WORK

SCALE: 1/4" = 1'-0"



# PLUMBING PLAN PROPOSED WORK

SCALE: 1/2" = 1'-0"



## PLUMBING NOTES

- ① REMOVE EXIST. PIPING FROM FIXTURES RETURNED BACK TO NEW VALVE TIE IN.
- ② INSTALL NEW 1/2" COPPER PIPE TO NEW FIXTURES. ALL PIPING SHALL HAVE A MINIMUM 1/2" INSTALATION RE-UP TO MFG. CUT SHEETS FOR LOCATION TIE IN POINT. WORK INCLUDES REDUCER CONNECTIONS AND ALL MOUNTING SUPPORT HANGERS AS REQ. IN ACCORDANCE WITH LOCAL CODE.
- ③ INSTALL NEW 1-1/2" C.R.P. SEWER PIPE FROM FIXTURE TO EXIST. SEWER PIPE. PROVIDE REDUCERS AS REQ. REFER TO MFG. CUT SHEETS FOR LOCATION TIE IN POINT. WORK INCLUDES REDUCER CONNECTIONS AND ALL MOUNTING SUPPORT HANGERS AS REQ. IN ACCORDANCE WITH LOCAL CODE. INSTALL & TIE NEW VENT PIPE TO NEAREST RISER.
- ④ REMOVE EXIST. PIPING TO FIXTURES EXPOSED INTO ROOM. CAP OFF SUPPLY LINES INTO WALL OR BELOW FLOOR LINE..
- ⑤ INSTALL 1/2" NEW BALL VALVES. RE-INSULATE EXISTING PIPING WHERE EXPOSED.
- ⑥ REPLACE EXIST. FLOOR DRAINS WITH NEW. EXAMINE & REPLACE DRAIN LINES AS NECESSARY WITH NEW CORROSION RESISTANCE PIPING.
- ⑦ RE-USE EXISTING COLD WATER LINE AND DRAIN TO CONNECT INTO NEW EYE WASH.



**UNITED STATES DEPARTMENT OF VETERANS AFFAIRS**  
VA MEDICAL CENTER - 1540 SPRING VALLEY DRIVE - HUNTINGTON WV 25704

DRAWING TITLE: MECHANICAL & PLUMBING PLAN PROJECT TITLE: MORGUE IMPROVEMENTS -

APPROVED: <b>CHRIS ECKLES</b>	BUILDING: <b>1S</b>	PROJECT NUMBER: <b>10-106</b>	DRAWING NUMBER: <b>M-1</b>
ASST. CHIEF, ENGINEERING			
APPROVED: <b>JOHN KLIM</b>	DRAWN: <b>STEVE ELROD</b>	DATE: <b>APR '12</b>	DWG.
CHIEF, ENGINEERING			