

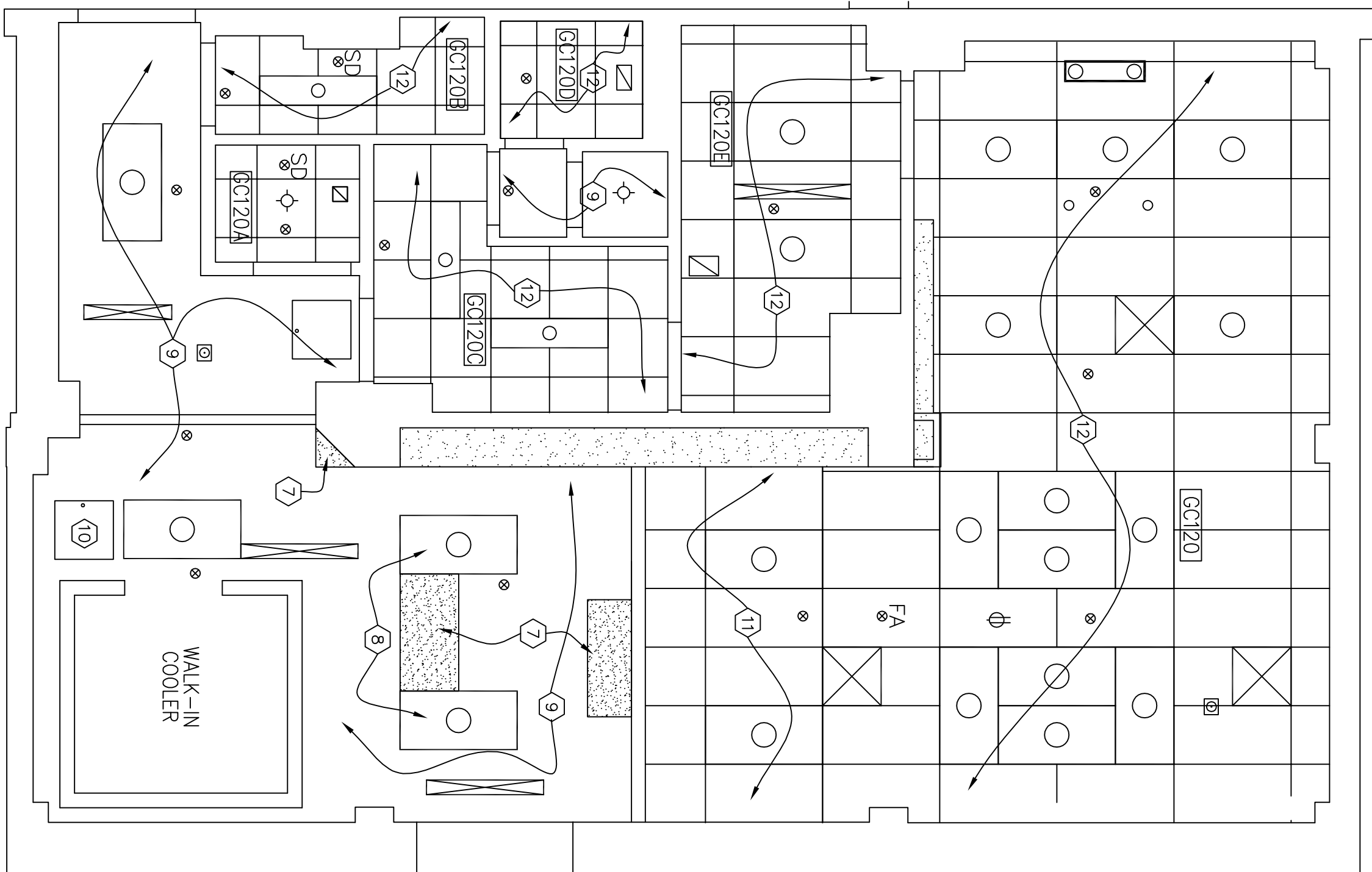
PROPOSED FLOOR PLAN

SCALE: 1/4" = 1'-0"



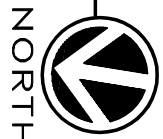
CONSTRUCTION NOTES

- 1 NEW DRYWALL PARTITION - 5/8" DRYWALL ON BOTH SIDES OF 4" 20 GAUGE METAL STUDS @ 16" O.C. TO 4" (MIN.) ABOVE HIGHEST ADJACENT FINISHED CEILING. PAINT ENTIRE WALL FROM CORNER TO CORNER BOTH SIDES.
- 2 NEW DRYWALL PARTITION - 5/8" DRYWALL ON ONE SIDES OF 2" 20 GAUGE METAL STUDS TO 4" (MIN.) ABOVE HIGHEST ADJACENT FINISHED CEILING. PAINT ENTIRE WALL FROM CORNER.
- 3 INSTALL ALL NEW MORGUE FURNISHINGS. SEE SHEET A3 FOR CASEWORK SCHEDULE & FURNISHINGS DETAILS.
- 4 INSTALL NEW 4'-0" x 7'-0" HOLLOW METAL DOOR & 2" FRAME. DOOR SHALL HAVE ARMOR PLATE DOOR PROTECTION ON EACH SIDE. DOOR FRAMING STUDS SHALL BE DOUBLED AT EACH JAMB. INSTALL FLOOR ANCHOR CLIPS AS REQ. HARDWARE TO INCLUDE LEVER HANDLES, BUTTS, SILENCERS & DOOR STOP.
- 5 NEW FINISHES ENTIRE MORGUE. SEE ROOM FINISH SCHEDULES FOR DETAILS.
- 6 NEW DRYWALL PATCH - 5/8" DRYWALL ON FRONT SIDE OF NEW METAL STUDS TO 4" (MIN.) ABOVE HIGHEST ADJACENT FINISHED CEILING. PAINT ENTIRE WALL FROM CORNER TO CORNER.
- 7 PATCH AND PAINT CEILING AREAS WHERE EXIST. LIGHTS AND STRUCTURE WERE REMOVED. SEE ROOM FINISH SCHEDULE.
- 8 NEW LIGHTING LOCATIONS. SEE LIGHTING SCHEDULE.
- 9 PAINT DW CEILINGS. SEE FINISH SCHEDULE.
- 10 NEW 2 1/2" ACCESS PANEL & TO BE INSTALLED IN DRYWALL CEILING - LOCATION T.B.D. FOR MECHANICAL ACCESS WORK.
- 11 NEW CEILING TILE, GRID & LIGHTING. SEE FINISH SCHEDULE & LIGHTING PLAN.
- 12 EXISTING UNDAMAGED CEILING GRID TO BE REINSTALLED. REPLACE ALL TILES AND LIGHTS WITH NEW TILES SEE LIGHTING PLAN & ROOM FINISH SCHEDULE.
- 13 CONTRACTOR TO PROVIDE TEMPORARY WALK-IN COOLER DURING CONSTRUCTION. V.A. WILL PROVIDE ELECTRICAL REQUIREMENTS AND CONNECTIONS. CONTRACTOR WILL BE RESPONSIBLE TO MAINTAINING COOLER.
- 14 EXISTING TRAP DOOR ACCESS TO CRAWL SPACE SHALL RECEIVE SAME VCT FLOOR TREATMENT AS NOTED IN FINISH SCHEDULE.
- 15 INSTALL NEW EYE WASH STATION. CONNECT TO EXISTING COLD WATER LINE AND DRAIN.



PROPOSED CEILING PLAN

SCALE: 1/4" = 1'-0"



UNITED STATES DEPARTMENT OF VETERANS AFFAIRS
VA MEDICAL CENTER - 1540 SPRING VALLEY DRIVE - HUNTINGTON WV 25704

NEW WORK PLAN

MORGUE IMPROVEMENTS

APPROVED:	CHRIS ECKLES	BUILDING:	1S	PROJECT NUMBER:	10-106	DRAWING NUMBER:	A2
ASST. CHIEF, ENGINEERING							
DRAWN:	JOHN KLIM	DATE:	APR '12				
CHIEF, ENGINEERING							