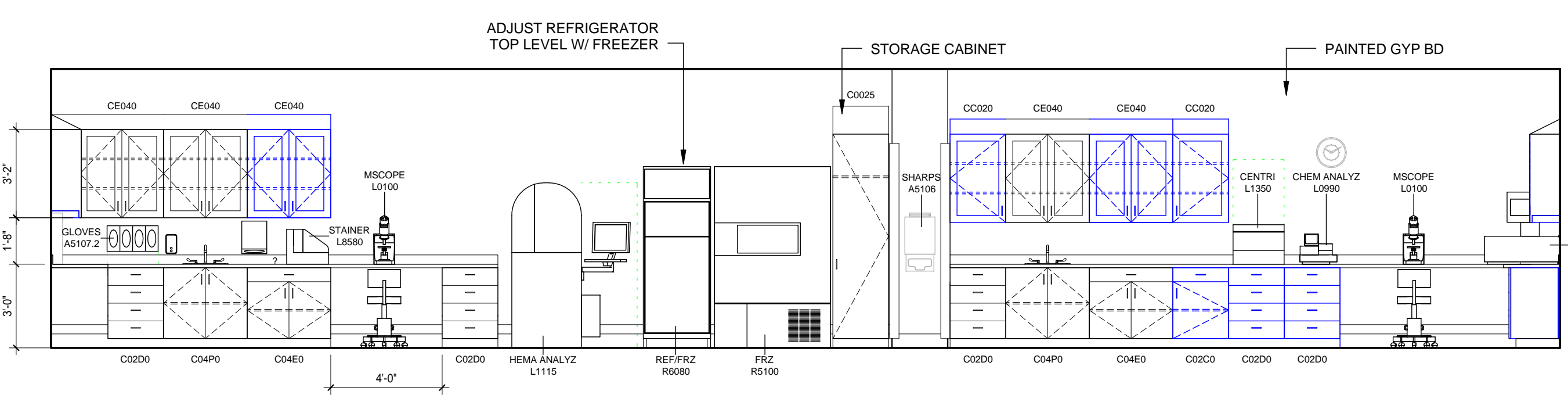


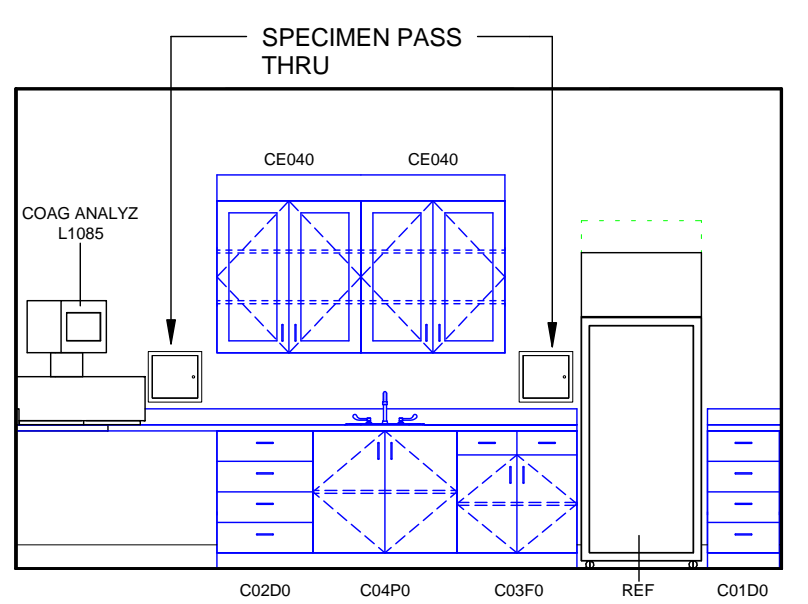
three inches = one foot
one and one half inches = one foot
one inch = one foot
three quarters inch = one foot
one half inch = one foot
three eighths inch = one foot
one quarter inch = one foot
one eighth inch = one foot
one sixteenth inch = one foot

FILE PATH: C:\Users\jhigh\Documents\T1131_Initial\Recovery.rvt
DATE PRINTED: 9/10/2014 12:09:22 PM
VA FORM 25-62 (1)

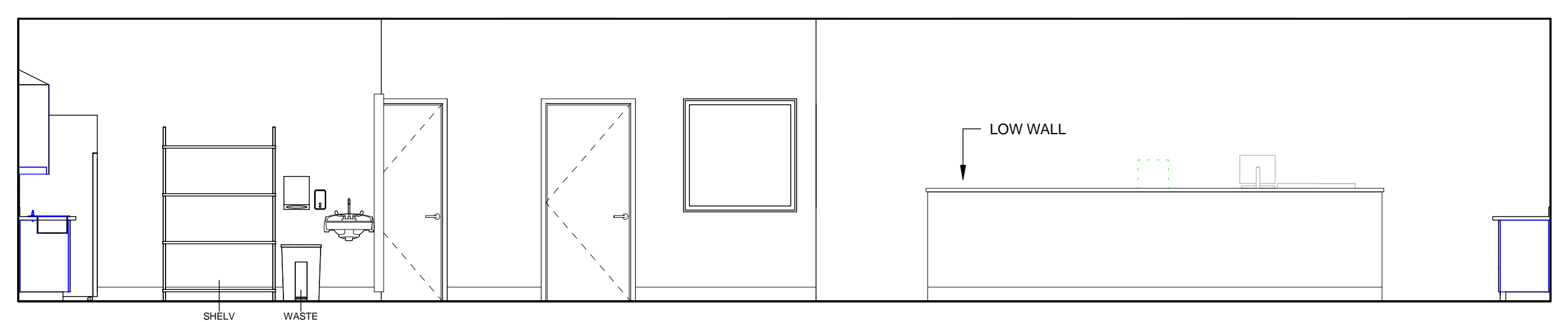
3 HEMATOLOGY, SPECIMEN PROCESS - T1DE12
1/4" = 1'-0"



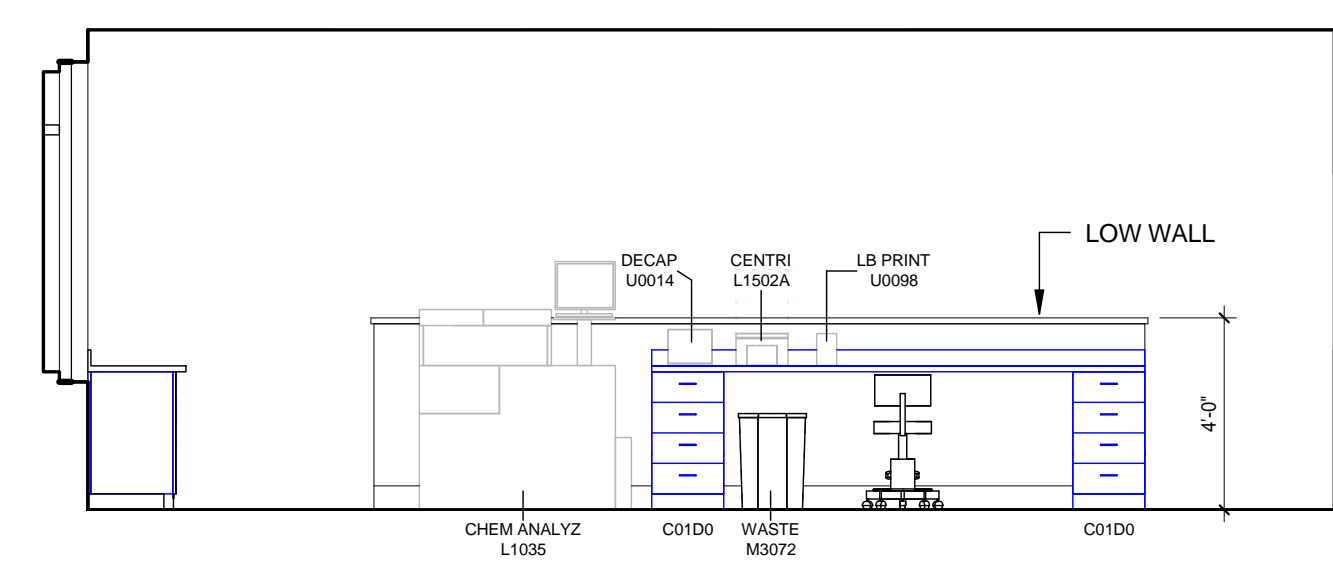
4 URINALYSIS - T1DE13
1/4" = 1'-0"



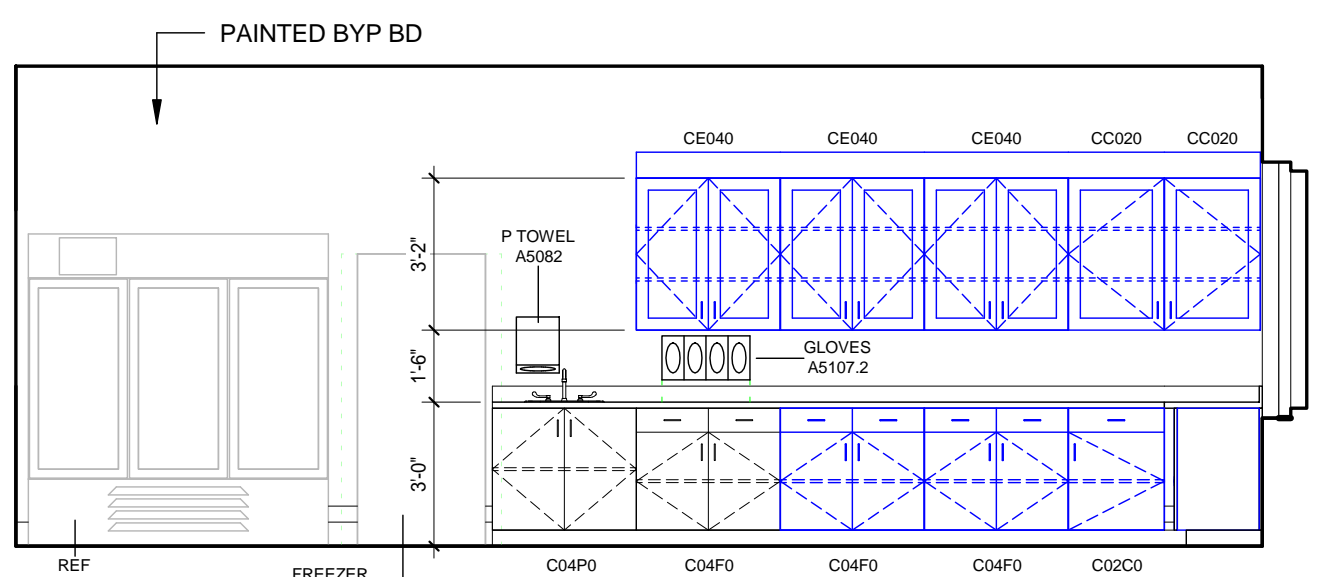
5 URINALYSIS - T1DE13
1/4" = 1'-0"



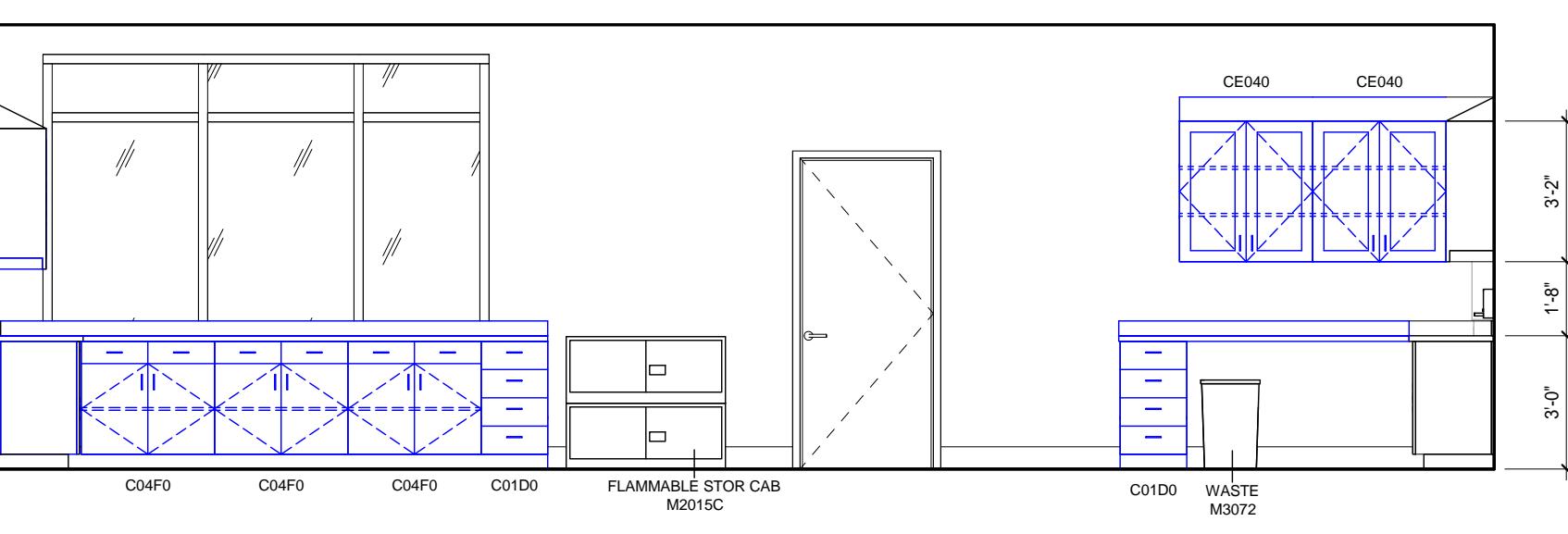
6 CHEMISTRY - T1DE11
1/4" = 1'-0"



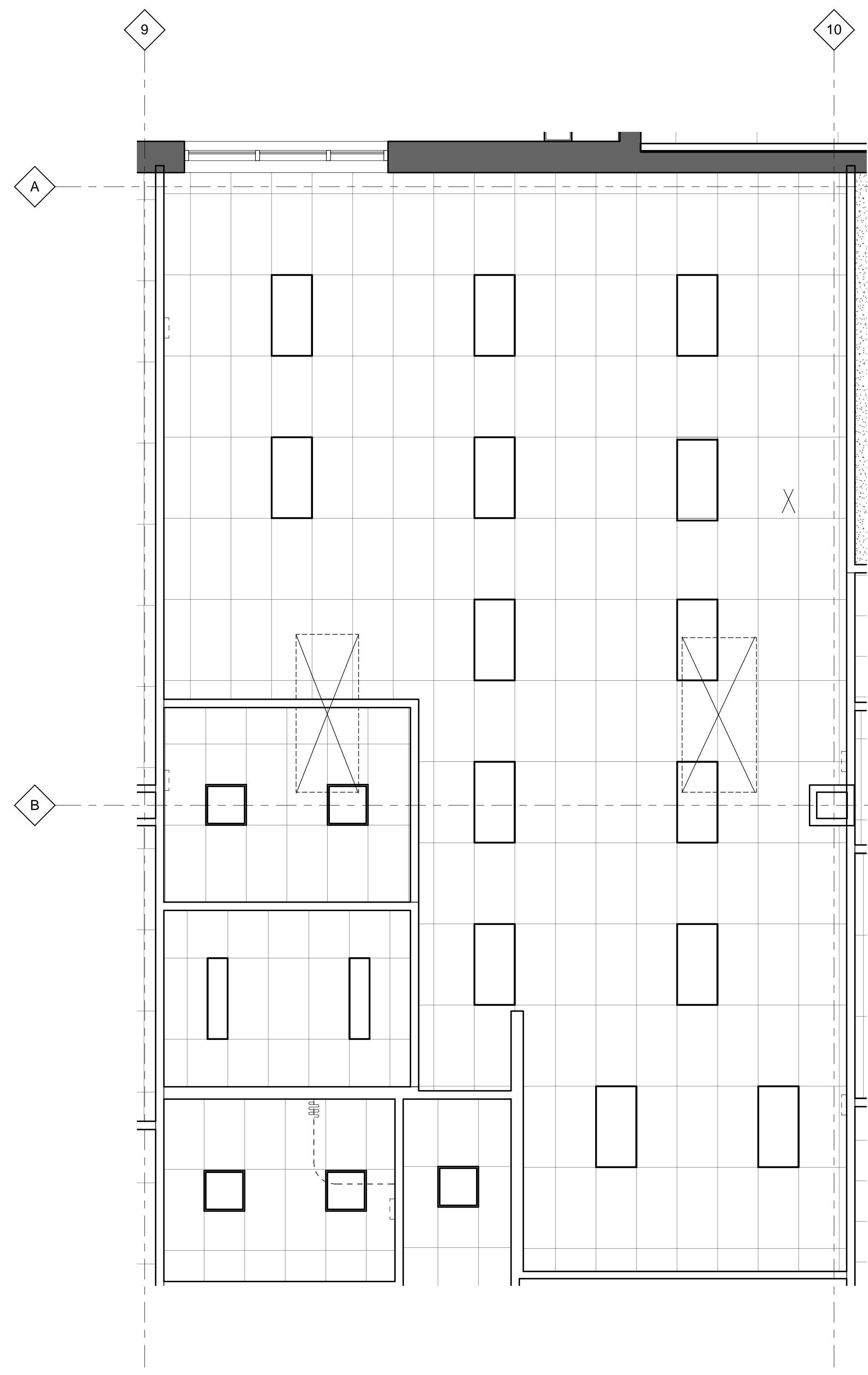
7 CHEMISTRY - T1DE11
1/4" = 1'-0"



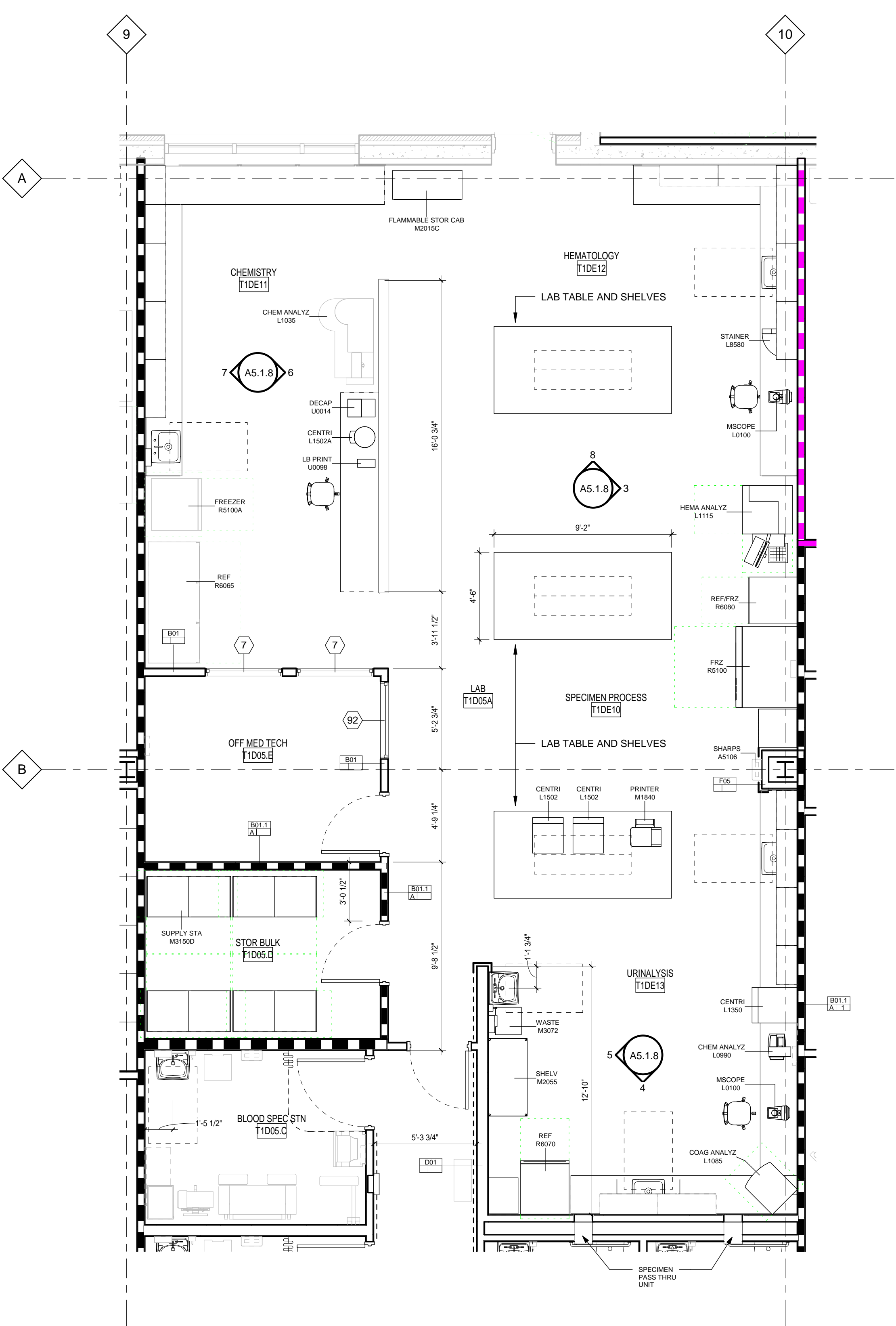
8 CHEMISTRY, HEMATOLOGY
1/4" = 1'-0"



2 LAB - RCP
1/4" = 1'-0"



1 LAB
1/4" = 1'-0"



GENERAL NOTES

- SEE FLOOR PLAN FOR OVERALL WALL DIMENSIONS, DOOR, FIXTURE AND WALL ORIENTATION
- FOR ADDITIONAL INTERIOR FINISHES, SEE INTERIOR DESIGN SERIES DRAWINGS
- REFER TO STRUCTURAL DRAWINGS FOR SLAB DEPRESSIONS AND CONCRETE WALL DIMENSIONS
- REFER TO G SERIES SHEETS FOR TYP. MOUNTING HTS.
- PROVIDE 2% SLOPE MAX. AT TOILET/SHOWER ROOMS, U.O.N.
- MAINTAIN SAME FLOOR ELEVATION AT PERIMETER OF SLOPED SHOWER AREA
- MAINTAIN SAME FLOOR ELEVATION AT PERIMETER OF TOILET ROOMS, EXCEPT FOR AREAS WHERE TRANSITION OCCURS AT IMMEDIATE SHOWER AREA
- TOP OF DRAIN STRAINER TO BE FLUSH WITH ADJACENT FLOOR FINISH
- PROVIDE 1/4" MIN. BETWEEN TOP OF DRAIN STRAINER AND TOP OF SLAB
- REFER TO INTERIOR DESIGN SHEETS FOR WALL PROTECTION
- LAYOUT CEILING TILE FROM CENTER OF ROOMS, AND/OR AREAS BOTH DIRECTIONS, U.O.N. AN AREA IS DEFINED AS A GROUP OF ROOMS WITH PARTITIONS EXTENDING ONLY TO THE UNDERSIDE OF CEILING AND BORDERED BY PARTITIONS EXTENDING TO THE UNDERSIDE OF STRUCTURAL SLAB ABOVE
- LOCATE ALL SPRINKLER HEADS, SMOKE DETECTORS, SPEAKERS AND OTHER CEILING MOUNTED MECHANICAL, ELECTRICAL, PLUMBING AND SECURITY ITEMS AT THE CENTER OF ACOUSTICAL CEILING PANELS U.O.N.
- WHERE SPRINKLER HEADS ARE NOT SHOWN, ADJUST SPRINKLER HEAD LOCATIONS TO CLEAR OTHER CEILING FIXTURES AND ELEMENTS AS REQUIRED
- THE EXTENT OF ACCESS DOORS AND EQUIPMENT, AS SHOWN ON THE REFLECTED CEILING PLANS, DOES NOT NECESSARILY REPRESENT THEIR FULL LIMITS OR EXACT LOCATIONS. ADDITIONAL ACCESS DOORS MAY BE REQUIRED TO SERVE EQUIPMENT NOT SHOWN ON PLANS. PROVIDE ACCESS DOORS AS REQUIRED BY CODE
- PROVIDE BLOCKING AT ALL FIXTURES, GRAB BARS AND TOILET PARTITION ATTACHMENTS.

KEYNOTES

- FINISH CEILING HEIGHT
- ROOM IDENTIFICATION
- SUSPENDED 2' x 4' ACT CEILING
 - SUSPENDED 2' x 2' ACT CEILING
 - SUSPENDED GWS CEILING
 - PERFORATED WOOD CEILING PANELS
 - SPECIALITY LIGHT PANEL
 - CUBICLE OR SHOWER CURTAIN AND TRACK, SEE SPECIFICATIONS, ENLARGED PLANS, AND
 - EXAM LIGHT
 - LINEAR WALL SCONCE
 - 1X4 FLUORESCENT
 - 2X4 FLUORESCENT
 - 2X2 FLUORESCENT
 - VANITY SCONCE
 - DECORATIVE PENDANT
 - EXTERIOR WALL SCONCE
 - INTERIOR WALL SCONCE
 - RECESSED CAN
 - RECESSED WALL WASHER
 - EXIT LIGHT
 - NURSE CALL LIGHT FIXTURE

LEGEND

KEY PLAN

TENANT IMPROVEMENT ISSUE FOR PERMIT

ARCHITECT: SODERSTROM ARCHITECTS, Ltd. architecture planning exterior restoration interior design 1200 NW Naito Parkway, Suite 410 Portland, Oregon 97209 MAIN 503.228.5617 FAX 503.273.8584 www.sdra.com		Drawing Title GENERAL ENLARGED PLANS Approved: Project Director		Project Title DEPARTMENT OF VETERAN AFFAIRS OUTPATIENT CLINIC Location EUGENE/SPRINGFIELD OREGON Date 08/04/2014		Project Number VA-101-11-RP-0136 Building Number 1 Drawing Number A5.1.8		Office of Construction and Facilities Management Department of Veterans Affairs	
--	--	--	--	---	--	--	--	--	--

URINALYSIS

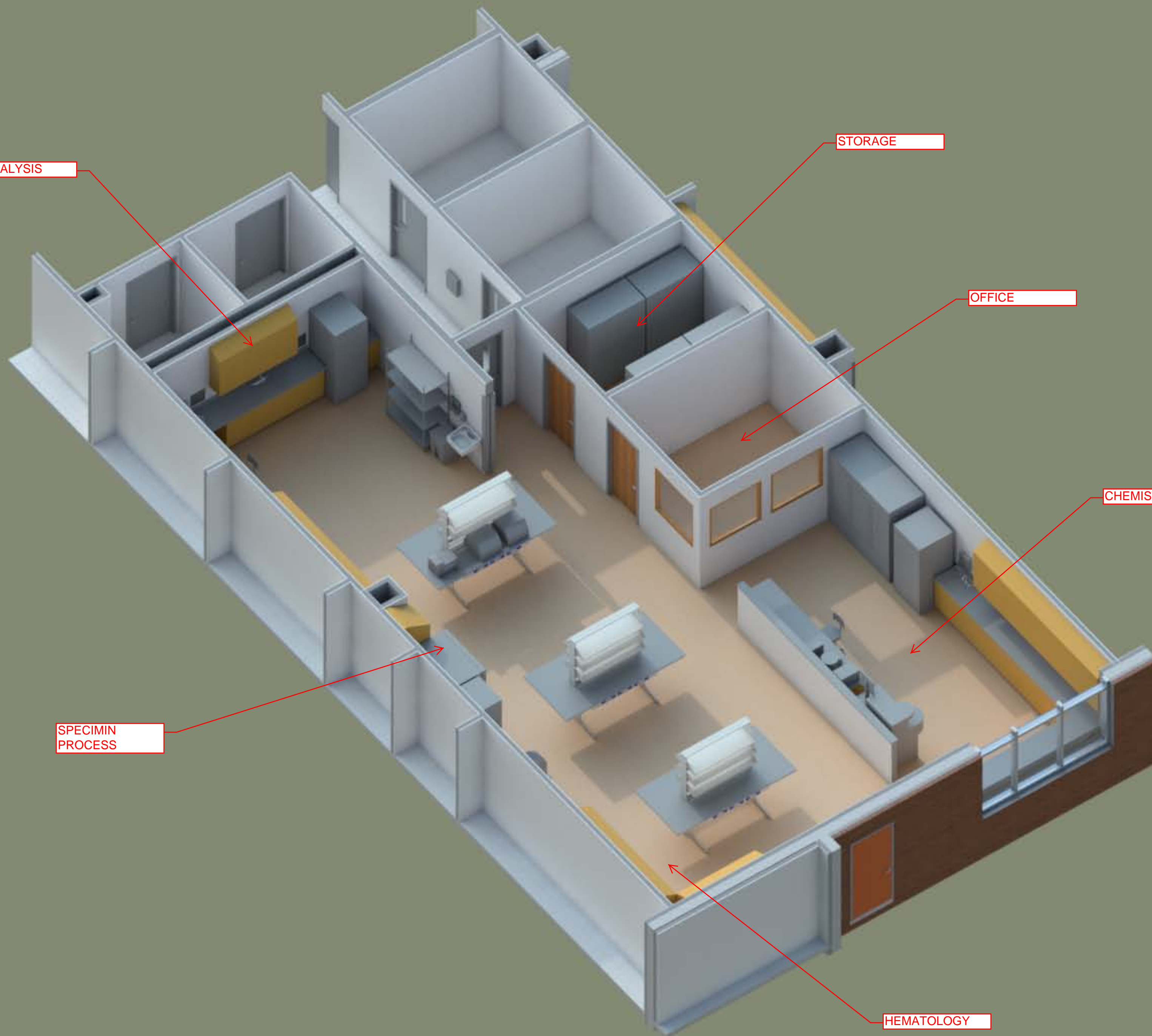
STORAGE

OFFICE

CHEMISTRY

SPECIMIN
PROCESS

HEMATOLOGY



CHEMISTRY

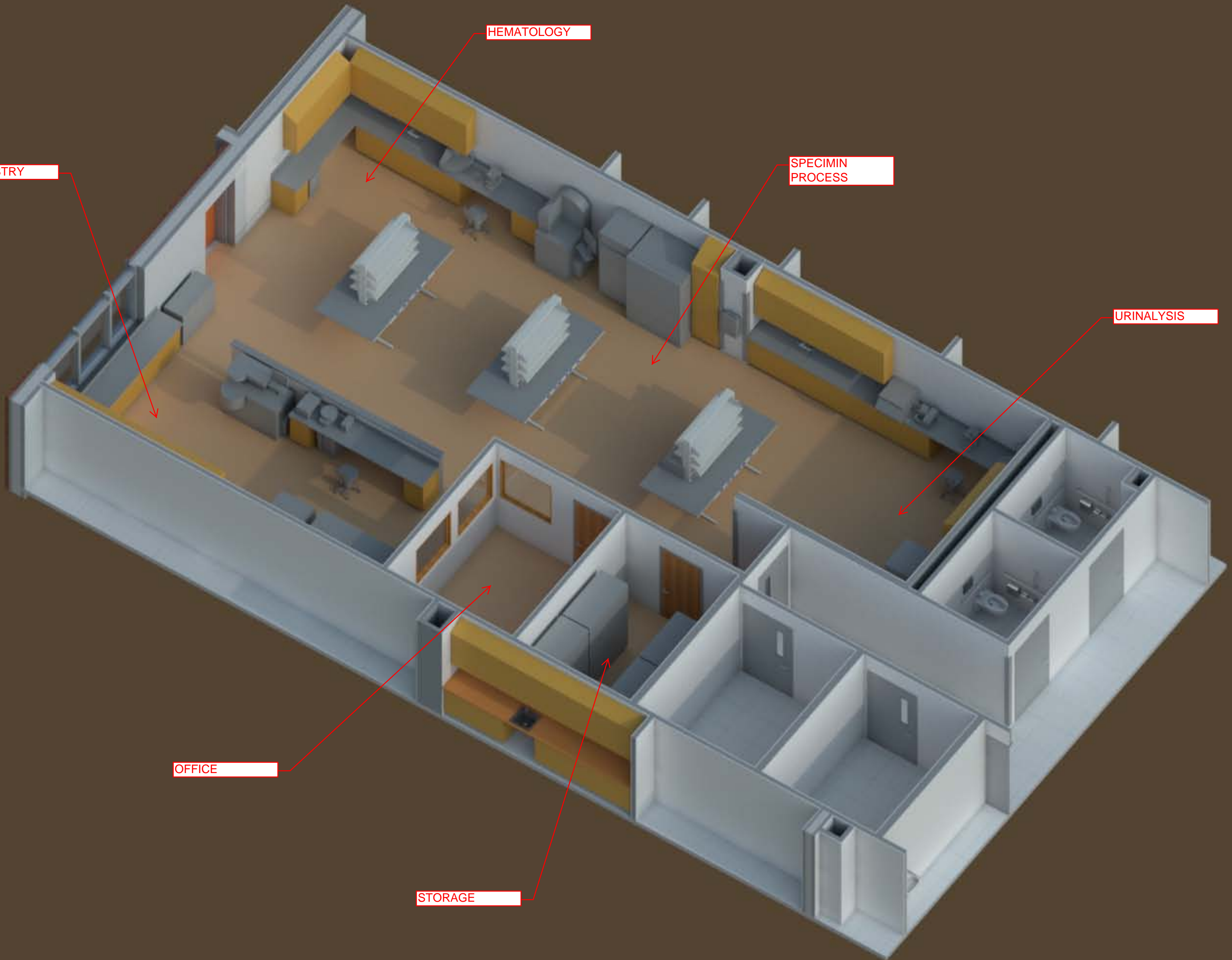
HEMATOLOGY

SPECIMIN
PROCESS

URINALYSIS

OFFICE

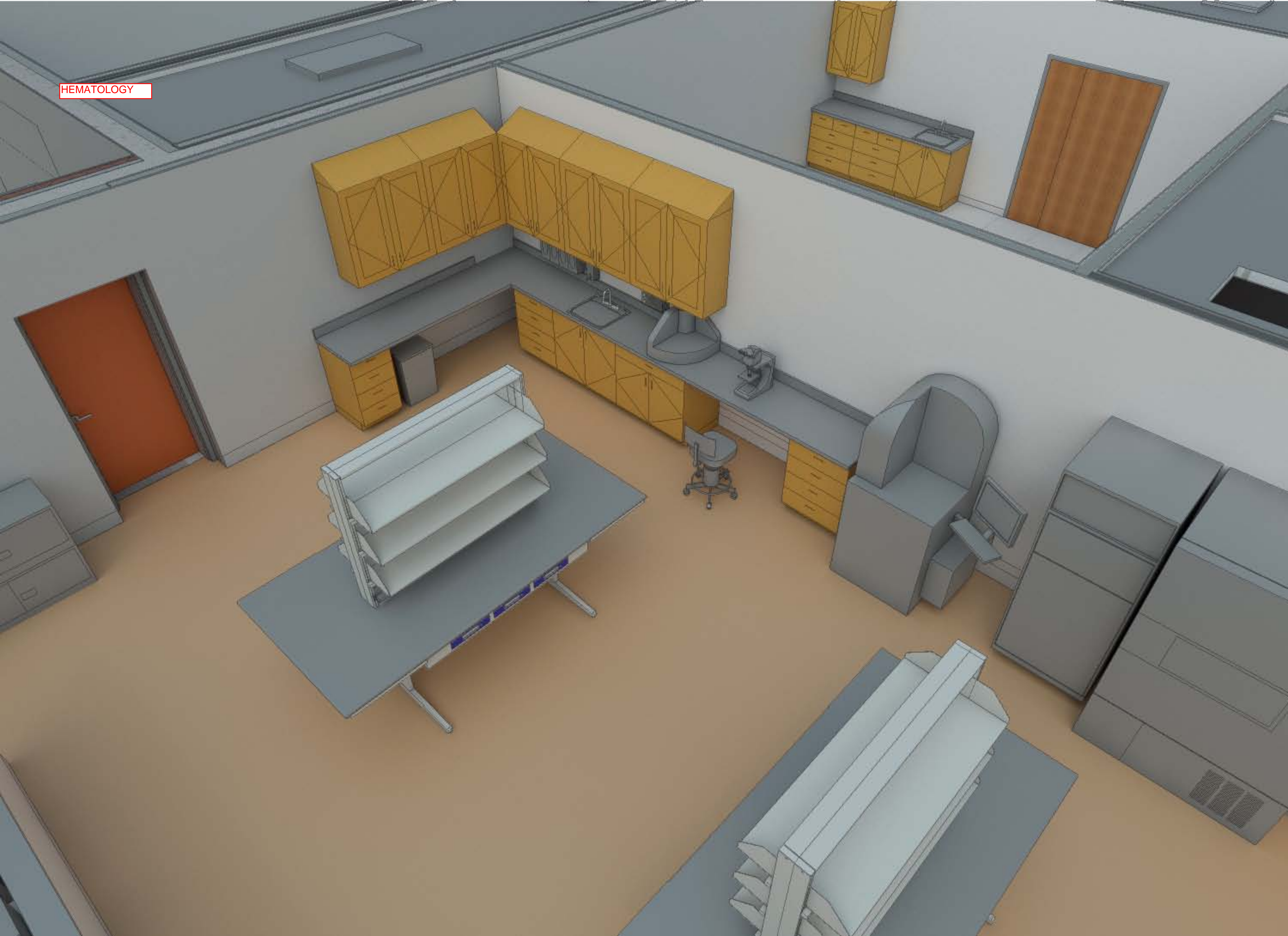
STORAGE

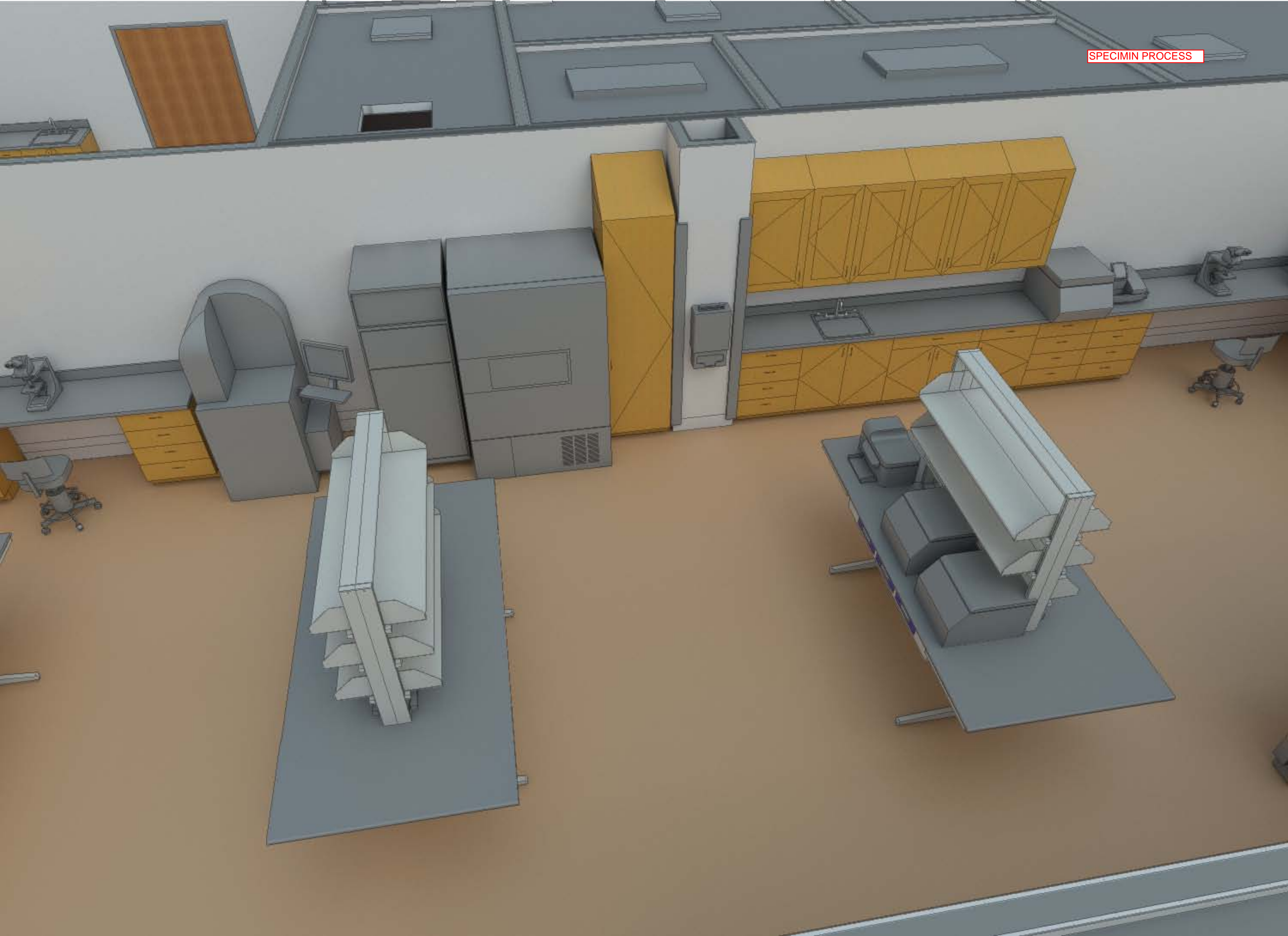


CHEMISTRY



HEMATOLOGY





URINALYSIS

