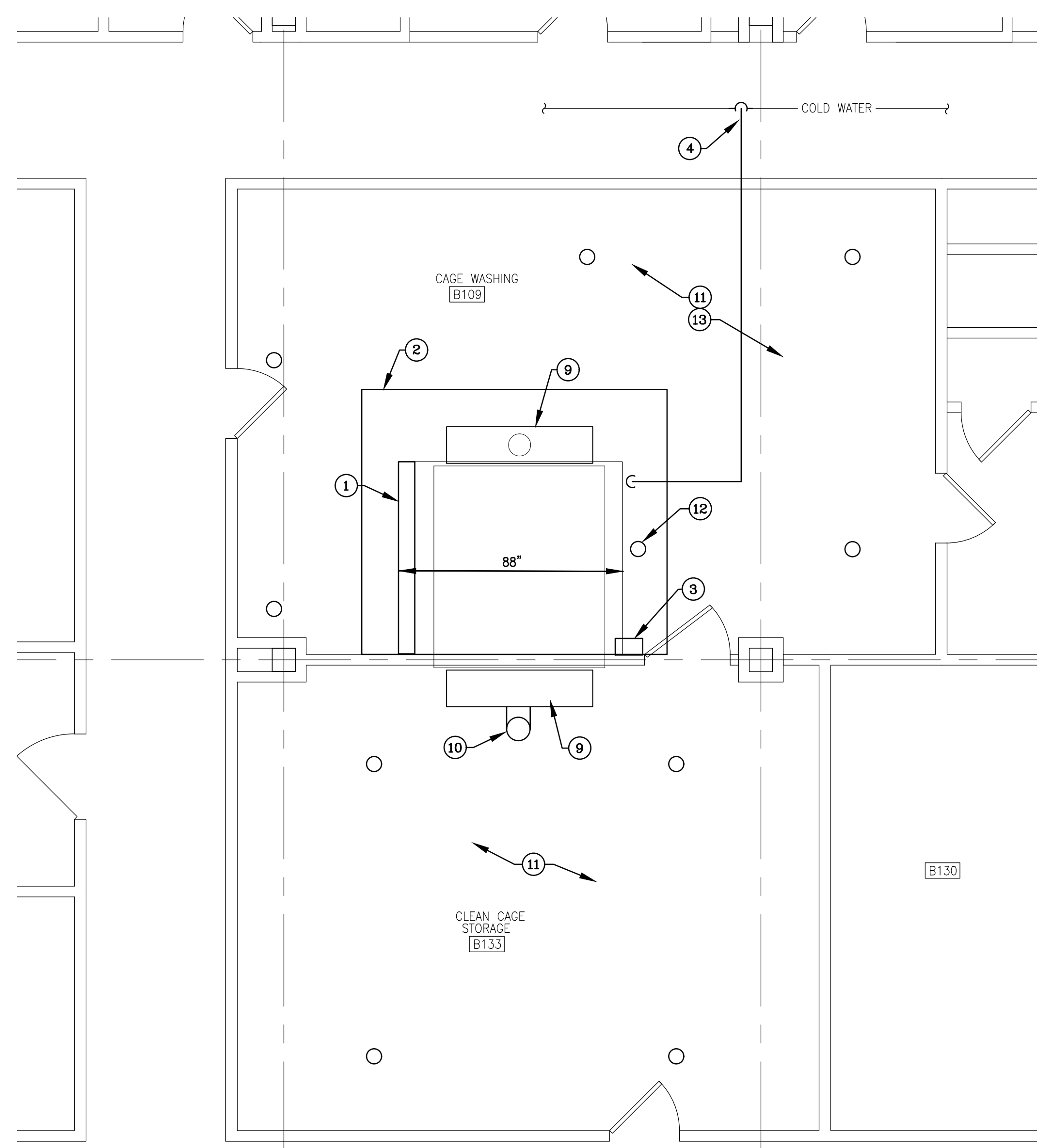
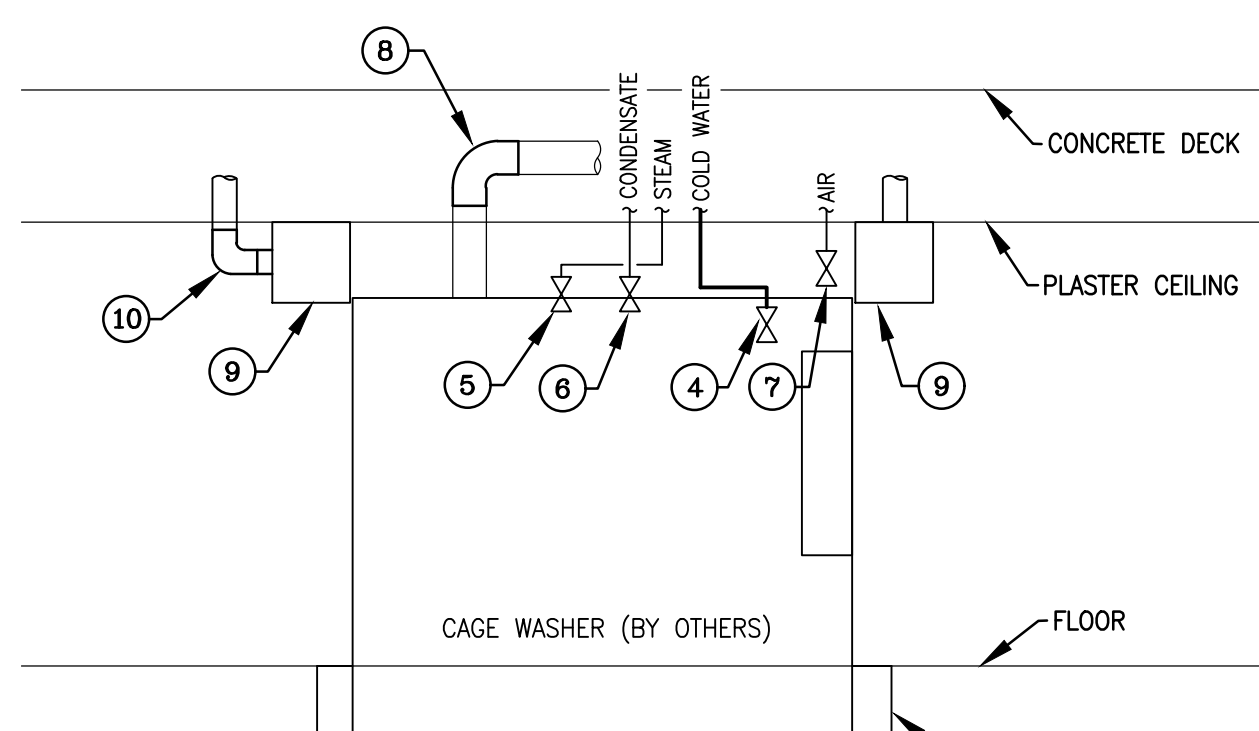


PLAN NOTES

- ① SAW CUT EXISTING CONCRETE FLOOR AND WIDEN PIT TO 8" WIDE MIN. x 12" DEEP WITH NEW CONCRETE. PROVIDE A STAINLESS STEEL ANGLE AT EDGE OF PIT TO MATCH EXISTING.
- ② PROVIDE NEW DRYWALL CEILING AND FRAMING TO LINE-UP WITH EXISTING PLASTER CEILING.
- ③ PROVIDE NEW 480V, 3ØA, 3 PHASE DISCONNECT SWITCH AND CONNECT TO NEW WASHER.
- ④ PROVIDE NEW 1-1/2" COLD WATER LINE WITH VALVES FROM MAIN IN CORRIDOR TO WASHER.
- ⑤ PROVIDE 1-1/2" VALVE ON STEAM LINE.
- ⑥ PROVIDE 1" VALVE ON CONDENSATE LINE.
- ⑦ PROVIDE 3/8" VALVE ON AIR LINE.
- ⑧ RECONNECT EXISTING EXHAUST TO TOP OF WASHER. MAKE ALL NECESSARY MODIFICATIONS.
- ⑨ REINSTALL EXISTING EXHAUST DUCT TIGHT TO FACE OF NEW WASHER.
- ⑩ PROVIDE NEW DUCT FROM EXHAUST HOOD.
- ⑪ PROVIDE NEW QUICK RESPONSE HEADS IN ROOMS B109 & B133.
- ⑫ PROVIDE HIGH TEMPERATURE HEAD CLOSE TO WASHER.
- ⑬ PROVIDE NEW EPOXY FLOORING THRU-OUT ROOM B109.

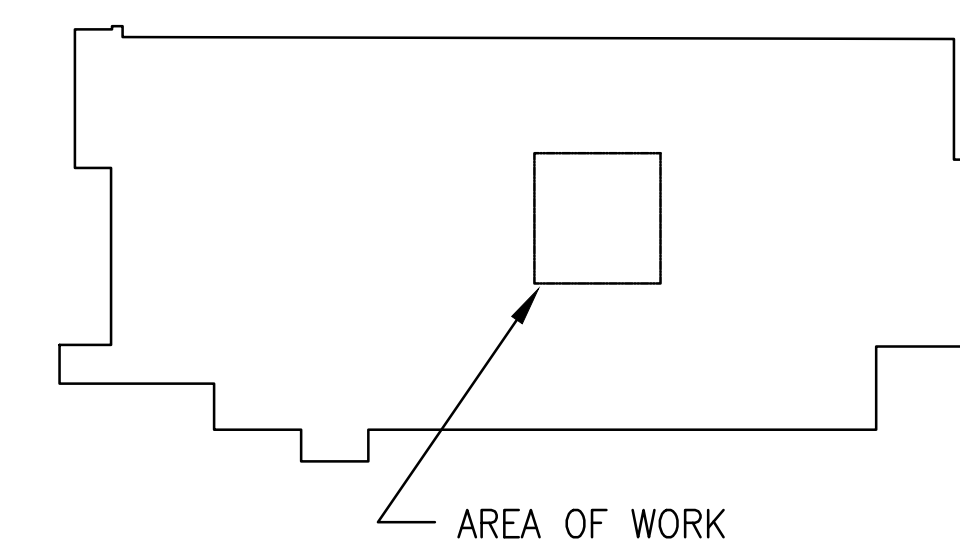
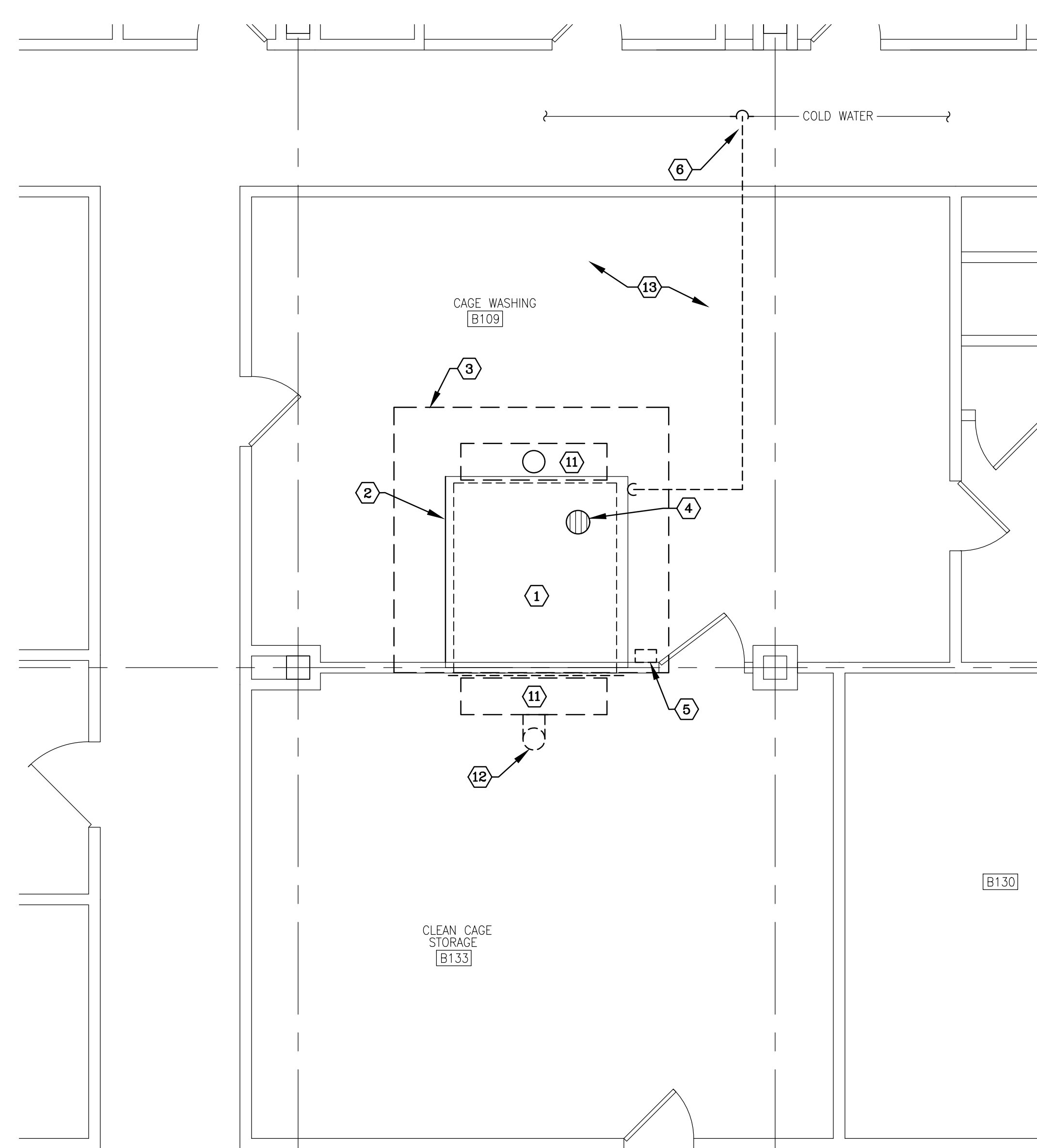
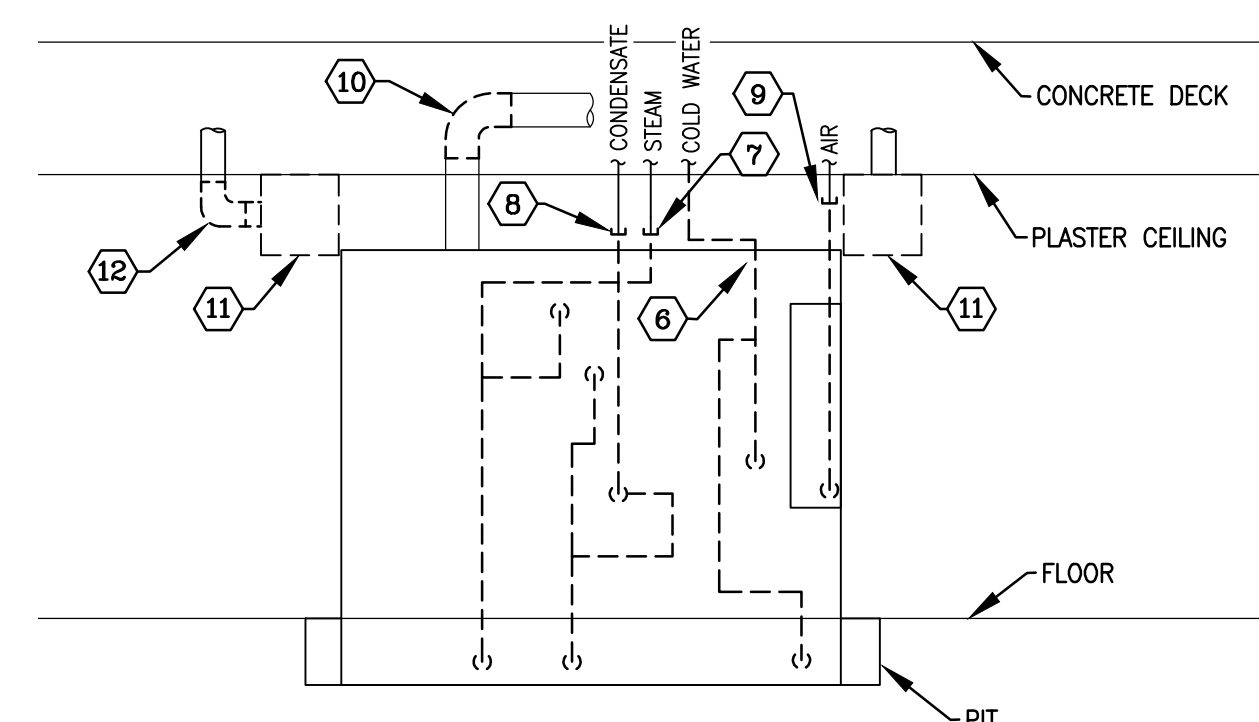


GENERAL NOTES

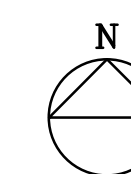
- A. PROVIDE A DUMPSTER FOR CONTRACTOR DEBRIS AND FOR THE CRATING FROM NEW WASHER.
- B. COORDINATE REMOVAL AND INSTALLATION OF WASHERS WITH THE VENDOR, STERIS CORP. ALL WORK MUST BE KEPT TO A MINIMUM TIME FRAME TO LESSEN THE IMPACT ON THE FACILITY.
- C. FINISH, PRIME AND PAINT CEILING IN ROOM B109.

DEMO NOTES

- (1) EXISTING CAGE WASHER TO BE REMOVED BY OTHERS.
- (2) REMOVE EXISTING STAINLESS STEEL EDGE GUARD AT PIT.
- (3) REMOVE EXISTING CEILING, 24" PERIMETER AROUND EXISTING WASHER.
- (4) EXISTING FLOOR DRAIN IN BOTTOM OF PIT. CLEAN OUT DRAIN AND SNAKE OUT SEWER.
- (5) REMOVE EXISTING DISCONNECT SWITCH (480v, 30A, 3-PHASE).
- (6) DISCONNECT AND REMOVE EXISTING 1" COLD WATER IN ITS ENTIRETY BACK TO MAIN IN CORRIDOR CEILING.
- (7) DISCONNECT AND REMOVE EXISTING 1-1/2" STEAM PIPING BACK TO JUST BELOW CEILING.
- (8) DISCONNECT AND REMOVE EXISTING 1" CONDENSATE PIPING BACK TO JUST BELOW CEILING.
- (9) DISCONNECT AND REMOVE EXISTING 3/8" AIR LINE BACK TO JUST BELOW CEILING.
- (10) DISCONNECT EXISTING EXHAUST FROM TOP OF EXISTING WASHER.
- (11) REMOVE EXISTING EXHAUST HOOD AND SAVE FOR REINSTALLATION.
- (12) REMOVE EXISTING DUCT FROM HOOD.
- (13) SAND, CLEAN AND PREP FLOOR FOR NEW EPOXY COATING.



BLDG 20
KEY PLAN
SCALE: NONE

[illegible]