

RFI FORM


Contractor Name: BVB Construction

Address: 1650 Palma Drive, Ventura CA

Phone/Fax: (805) 642-8381 / (805) 642-8382

Send to: cecil.nichols@va.gov

RFI (REQUEST FOR INFORMATION)			
PROJECT NO.:	600-CSI-101	RFI NO.:	034
PROJECT NAME:	MRI Renovation & Expansion	DATE REQUESTED:	04/13/2017
SOLICITATION NO.:	VA262-17-B-0095	REFERENCE:	Outage at Bldg 138
DRAWING:		SPECIFICATION SECTION:	
DESCRIPTION OF PROBLEM OR INFORMATION BEING REQUESTED			
Please be specific as possible: What's the maximum outage time allowed at Building 138?			
PROJECT MANAGER'S RESPONSE			
IMEG-TTG Response: Further to site meeting 04/27 and coordination with VA electric shop personnel, see attached drawing pdfs EDS101 and ES101 for installation sequence table, temporary generator power and necessary outage coordination with VA. <i>Ashok Ranganathan</i> 05/01/2017 <i>TP</i>			

TRACKING NO.:	AMENDMENT NO.:
VA PROJECT ENGINEER/MANAGER: 	DATE: 05/04/17

three inches = one foot
one and one half inches = one foot
one inch = one foot
three quarters inch = one foot
one half inch = one foot
three eighths inch = one foot
one quarter inch = one foot
one eighth inch = one foot
one sixteenth inch = one foot



FIG #1: 12KV CIRCUIT A-1 FROM SUBSTATION INSIDE MANHOLE "MH-2".



FIG #2: 12KV CIRCUIT A-1 TO SWITCHBOARD 138A INSIDE MANHOLE "MH-2".

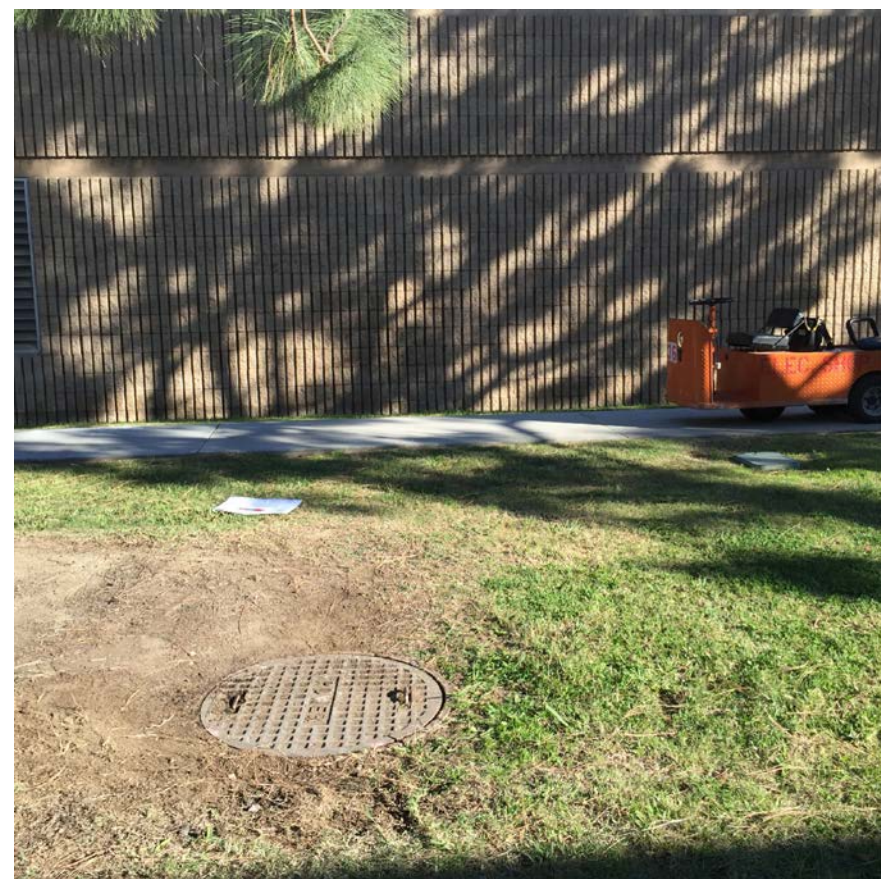


FIG #3: MANHOLE "MH-2" APPROXIMATELY 70 FEET AWAY FROM BUILDING 160.



FIG #4: ROUTING PATH FOR HIGH VOLTAGE UNDERGROUND CONDUIT/WIRE SHOWN BY RED MARK, VERIFY AT SITE FOR DETAILS.

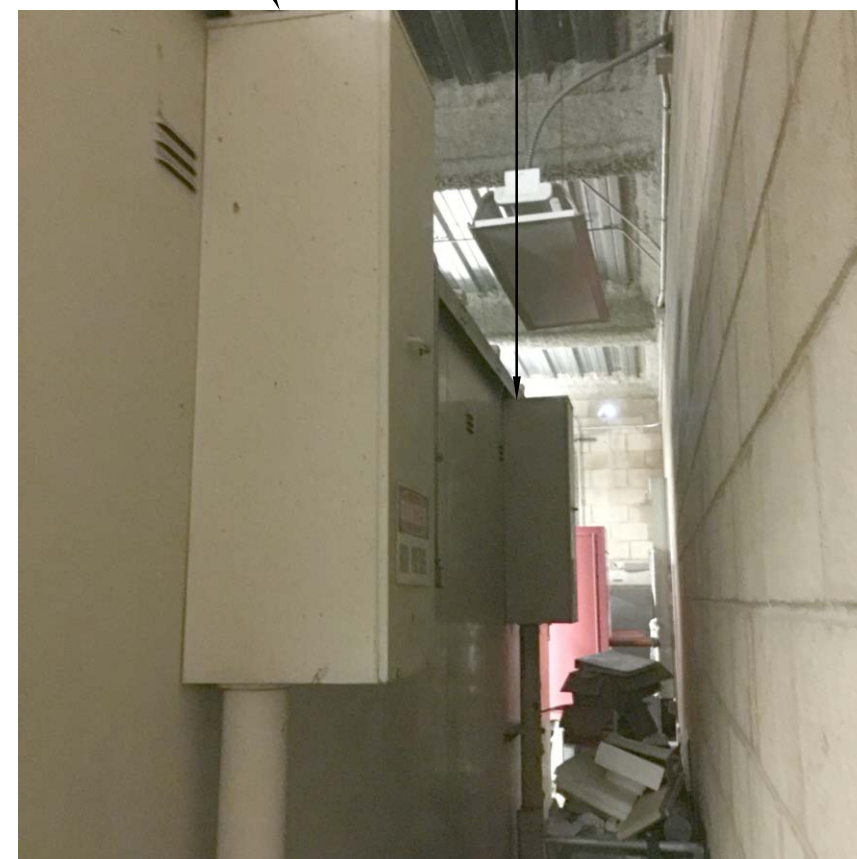


FIG #5: PULL BOXES INSIDE THE ELECTRICAL ROOM IN BUILDING 148.



FIG #6: SUBSTATIONS FOR CIRCUIT A1 AND A-2.



FIG #7: CONDUITS AND WIRE FROM SUBSTATION TO PULL BOXES.

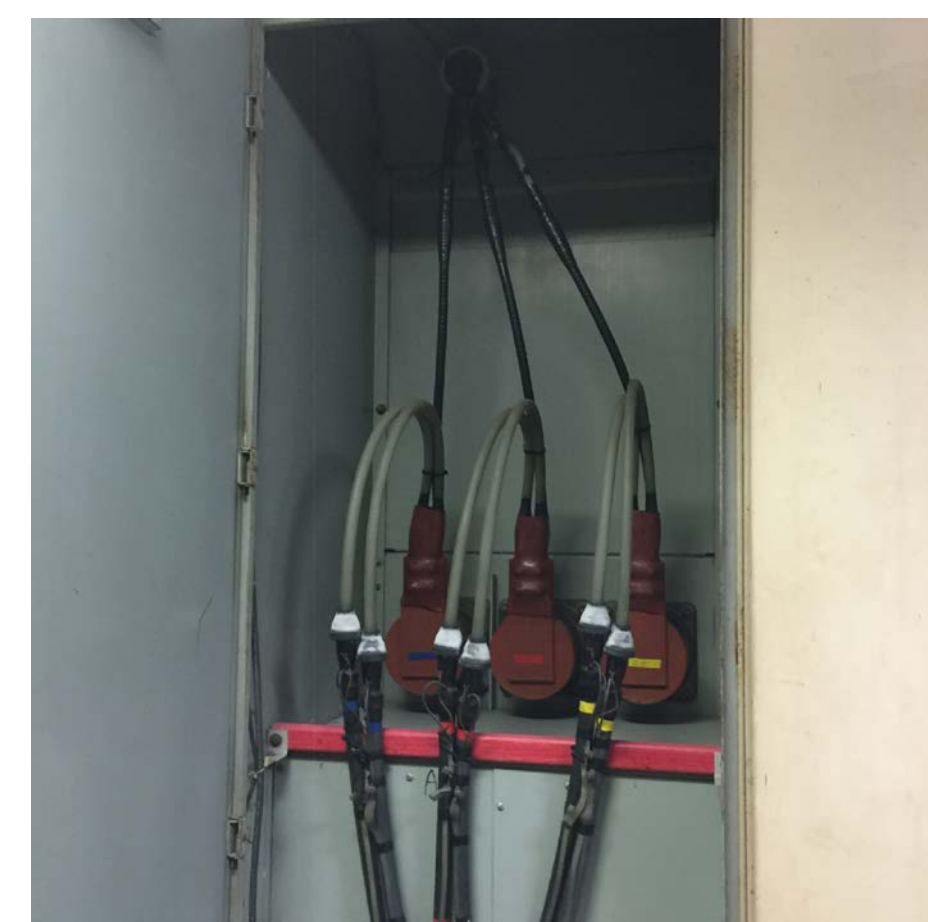


FIG #8: CIRCUIT GOING OUT FROM SUBSTATION (TYPICAL).



FIG #9: CIRCUIT A-2 INSIDE SUBSTATION.



FIG #10: CIRCUIT A-1 INSIDE SUBSTATION.



FIG #11: EXISTING MANHOLES.

GENERAL NOTES

1. COORDINATE WITH VA PRIOR TO STARTING WORK TO AVOID POWER FAILURE.
2. CONTRACTOR SHALL REPAIR ANY THING CONTRACTOR DISRUPTS OR DAMAGES AND RESTORE TO AS FOUND CONDITION.
3. ALL NEW WORK TO BE INSTALLED PRIOR TO DEMOLITION SCOPE OF WORK. COORDINATE WITH VA AS REQUIRED.
4. EXISTING ARE SHOWN IN LIGHT GRAY SETTING. NEW SCOPE OF WORK IS SHOWN IN DARK SETTING.
5. CONTRACTOR TO VERIFY EXISTING CONDITION AT SITE PRIOR TO THE WORK.

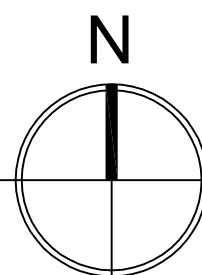
KEYNOTES

- 1 FOR CONTINUATION SEE BASEMENT AND FIRST FLOOR PLANS, SHEET EP101-a.
- 2 FOR CONTINUATION SEE SHEET EP101.
- 3 ALL CONDUIT RUNS FROM BUILDING 138 UP TO BUILDING 160 ARE ROUTED IN EXISTING CEILING SPACE.
- 4 EXISTING PULL BOX FOR CIRCUIT A-2, SEE FIGURE 5, 6, 7, 8, 9 AND 10.
- 5 EXISTING PULL BOX FOR CIRCUIT A-1, SEE FIGURE 5, 6, 7, 8, 9 AND 10.
- 6 EXISTING 12KV, CIRCUITS A-1 AND A-2 ROUTED TO BUILDING 138 VIA EXISTING MANHOLE "MH-2". SEE FIGURE 1, 2 AND 3.
- 7 PROVIDE NEW (2) 5" C EACH WITH (3)#2/10, 1#2G. FOR ROUTING 12KV, CIRCUITS A-1 AND A-2 FROM EXISTING PULL BOXES TO NEW MANHOLE "MH-3". CONTRACTOR TO VERIFY AT SITE AND COORDINATE AS REQUIRED.
- 8 INSTALL NEW CONCRETE MANHOLE "MH-3" (JENSEN PRECAST OR EQUIVALENT) 6'L X 8'W X 5'D.
- 9 INTERCEPT THE EXISTING 12 KV CIRCUITS A-1 AND A-2 AND SPLICE WITH NEW 12KV CIRCUITS A-1 AND A-2. SEE INSTALLATION SEQUENCE TABLE EDS 101.
- 10 REMOVE EXISTING 12KV, CIRCUITS A-1 AND A-2, PULL THE WIRE BACK TO THE SOURCE. SEE INSTALLATION SEQUENCE TABLE EDS 101.
- 11 REMOVE THE EXISTING MANHOLE AND HAND OVER TO VA FOR STORAGE AS REQUIRED.
- 12 EXISTING 12KV CIRCUITS A-1 AND A-2 ROUTED TO EXISTING SWITCHBOARD "SWBD SUB 138/SSB 1 & 2" LOCATED AT BUILDING 138 TO REMAIN.
- 13 EXISTING LOW VOLTAGE UNDERGROUND FEEDERS TO REMAIN.
- 14 EXISTING 12KV UNDERGROUND FEEDERS TO REMAIN.
- 15 IRRIGATION CONTROLLER, FOR EXACT LOCATION, SEE IRRIGATION DRAWING L-2.
- 16 PULL EXISTING A1 & A2 WIRES COIL & KEEP UP TO SPLICING POINT. RE-ROUTE THROUGH NEW UNDERGROUND LONG BENDS TO NEW MH-3 AS REQUIRED. SEE INSTALLATION SEQUENCE TABLE EDS 101.

ELECTRICAL SITE DEVELOPMENT PLAN

SCALE: 1/16" = 1'-0"

0 8' 16' 32'



ARCHITECT/ENGINEERS/CONSULTANTS:

KKAL
ARCHITECTS
ARCHITECTURE + ENGINEERING
CONSTRUCTION MANAGEMENT
12-J MAUCHLY
IRVINE, CALIFORNIA 92618
TEL: (949) 450-8420
FAX: (949) 450-8424

TTG
TMAD TAYLOR & GAINES
300 North Lake Avenue, 14th Floor
Pasadena, California 91101
Phone: 626-463-2800 Fax: 626-463-2801
www.ttgc.com Project No. 0215.413.00

Drawing Title
**ELECTRICAL
SITE DEVELOPMENT PLAN**

Approved Project Director

Project Title
**MRI RENOVATION
AND EXPANSION**

Location VA LONG BEACH HEALTHCARE SYSTEM
5901 EAST SEVENTH ST. LONG BEACH, CA 90822

Date
FEBRUARY 10, 2017

Checked
AR

Drawn
AC

Project Number
600-CS-101

Building Number
160

Drawing Number
ES101
Dwg. 108 of 211

Office of
Facilities
Management

Department of
Veterans Affairs