

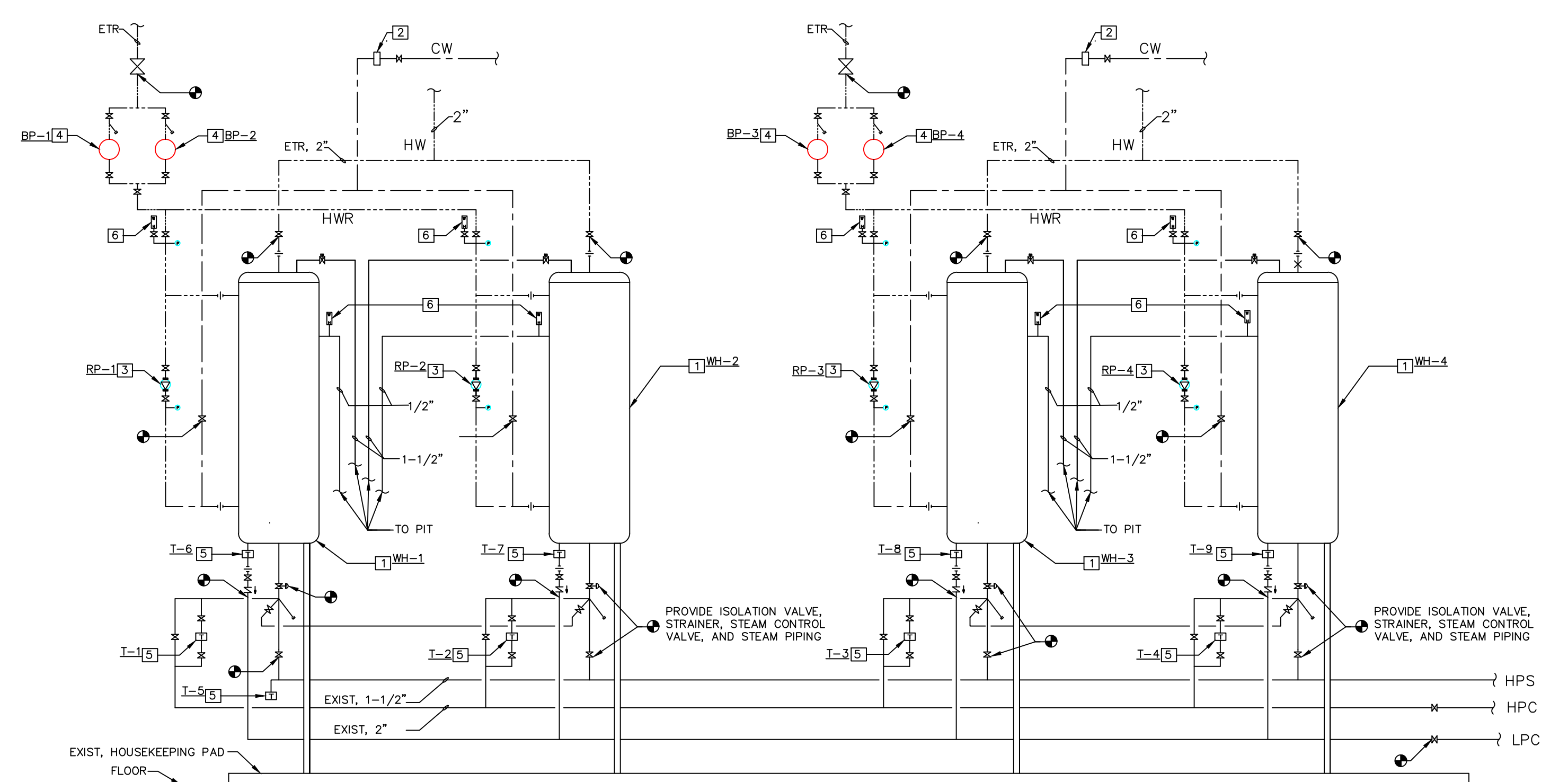
**WATER PIPING DIAGRAM - BLDG. 1S - DEMOLITION**  
**NO SCALE**

**DEMOLITION NOTES**

1. REMOVE EXISTING STEAM WATER HEATER AND ALL ASSOCIATED PIPING BACK TO POINT INDICATED ON DRAWINGS. DISCONNECT AND CAP PNEUMATIC CONTROL TUBING. REFER TO PIPING DIAGRAM ON THIS DRAWING FOR ADDITIONAL INFORMATION.
2. REMOVE EXISTING RE-CIRCULATION PUMP AND PREPARE PIPING FOR CONNECTION OF NEW RE-CIRCULATION PUMP. REFER TO NEW WORK DIAGRAM ON THIS DRAWING.
3. REMOVE EXISTING BOOSTER PUMP AND ASSOCIATED PIPING FOR CONNECTION OF NEW BOOSTER PUMP. REFER TO NEW WORK DIAGRAM ON THIS DRAWING.
4. REMOVE EXISTING STEAM TRAP AND ASSOCIATED PIPING.
5. REMOVE EXISTING WATER HAMMER ARRESTOR.
6. REMOVE EXISTING STEAM PRESSURE REDUCING VALVE.

**GENERAL NOTES:**

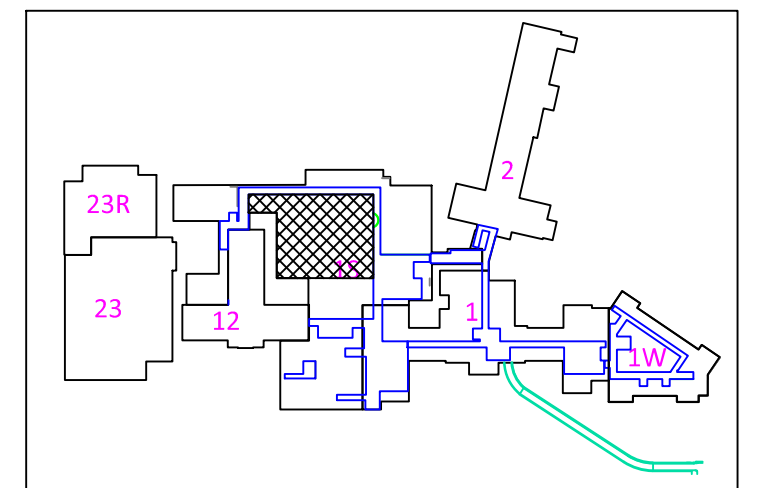
1. AN OFF-HOURS SHUTDOWN WILL BE COORDINATED BETWEEN CONTRACTOR AND HOSPITAL TO REPLACE THE 4" LOW PRESSURE CONDENSATE COLLECTION HEADER LOCATED AT FLOOR LEVEL BEHIND THE WATER HEATERS. THIS LINE WILL BE REPLACED FROM THE INLET FLANGE OF THE 4" ISOLATION VALVE TO THE LAST WATER HEATER WITH HEADER CONNECTIONS THAT MATCH THE CONNECTION SIZE OF THE STEAM TRAPS PROVIDED BY THE WATER HEATER MANUFACTURER FOR THEIR EQUIPMENT.
2. WATER HAMMER ARRESTORS SHALL BE PROVIDED AND INSTALLED BY MECHANICAL CONTRACTOR ON INLET WATER PIPING OF EACH WATER HEATER AND AHEAD OF THE ASO HIGH LIMIT SOLENOID DUMP VALVE ON EACH WATER HEATER. ARRESTOR SHALL BE WATTS SG SERIES OF APPROVE EQUAL.
3. CONTRACTOR SHALL REPLACE ALL LOW PRESSURE AND HIGH PRESSURE CONDENSATE PIPING INSULATION IN MECHANICAL ROOM.
4. ALL PIPING SHALL BE INSULATED AND LABELED.
5. HOT AREA SHALL HAVE ALUMINUM JACKET



**WATER PIPING DIAGRAM - BLDG. 1S - NEW WORK**  
**NO SCALE**

**NEW WORK NOTES**

1. PROVIDE NEW STEAM WATER HEATER. PROVIDE PIPING, INSULATION, HANGERS, AND SUPPORTS COMPLETE. REFER TO NEW STEAM WATER HEATER SCHEDULE ON DRAWING P0.1 FOR MORE INFORMATION.
2. PROVIDE DIGITAL PULSE TYPE WATER METER ON CW PIPING SERVING WATER HEATER BANK. CONNECT TO BUILDING CONTROL SYSTEM FOR MONITORING WATER CONSUMPTION.
3. PROVIDE NEW RE-CIRCULATION PUMP.
4. PROVIDE NEW BOOSTER PUMP.
5. PROVIDE NEW STEAM TRAP.
6. PROVIDE NEW WATER HAMMER ARRESTOR. SEE NOTE FOR DETAILS.
7. PROVIDE NEW STEAM PRESSURE REDUCING VALVE.



**KEY PLAN**  
**SCALE: NTS**



**UNITED STATES DEPARTMENT OF VETERANS AFFAIRS**  
**VA MEDICAL CENTER - 1540 SPRING VALLEY DRIVE - HUNTINGTON WV 25704**

DRAWING TITLE: <b>WATER PIPING DEMOLITION AND NEW WORK PLAN DIAGRAMS</b>		PROJECT TITLE: <b>REPLACE HOT WATER HEATERS BLDG. 1S</b>		
APPROVED: CHRISTOPHER ECKLES ASS'T CHIEF, ENGINEERING SERVICE	BUILDING: <b>1S</b>	PROJECT NUMBER: <b>581-12-108</b>	DRAWING NUMBER: <b>P3</b>	
APPROVED: JOHN KLIM CHIEF, ENGINEERING SERVICE	DRAWN: KAZI HOSSAIN	DATE: <b>MAY '12</b>	DWG. <b>4</b> OF <b>6</b>	