

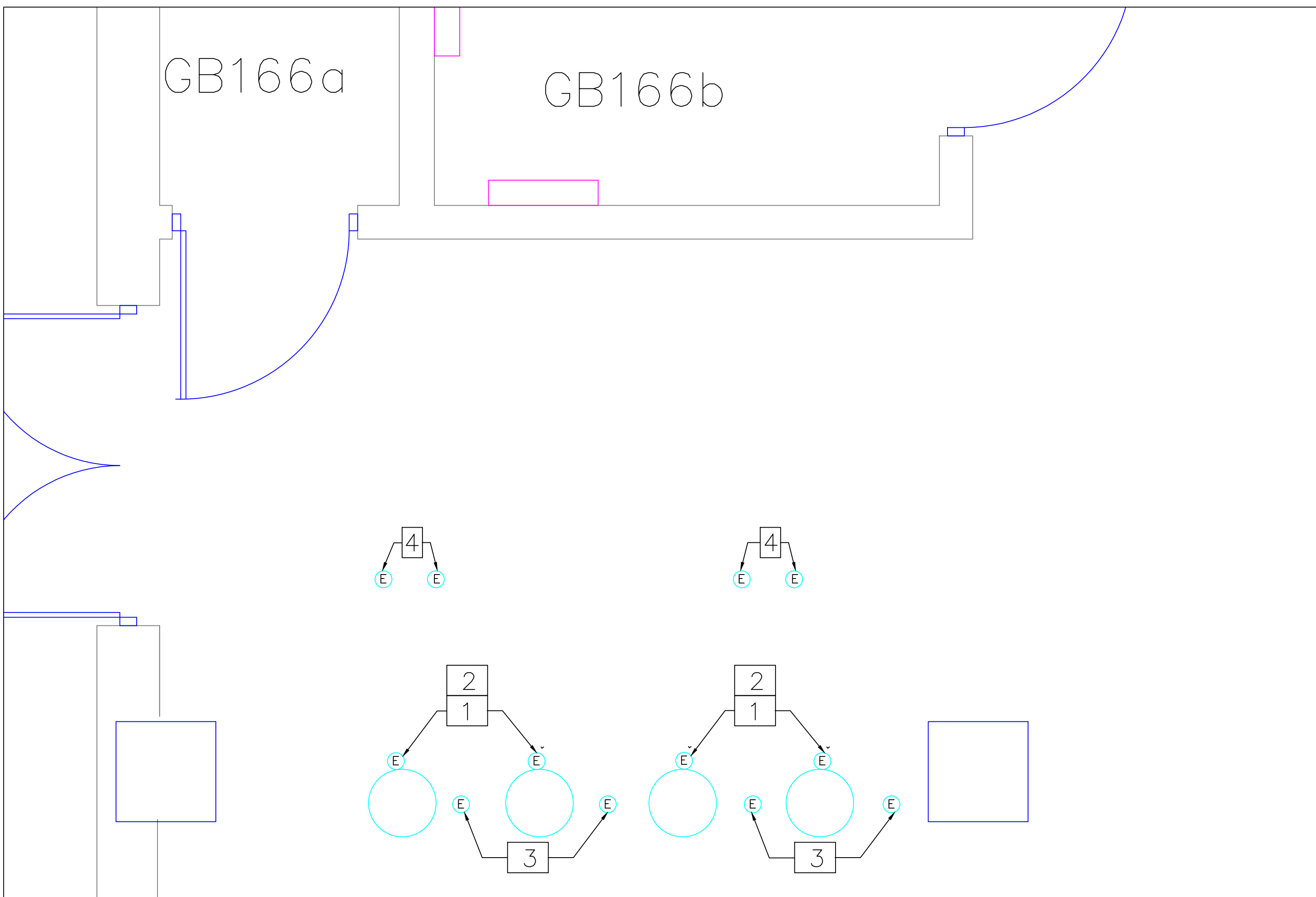
ELECTRICAL DEMOLITION FLOOR PLAN - BLDG. 1S
SCALE: 1/16" = 1' - 0"

DEMOLITION NOTES

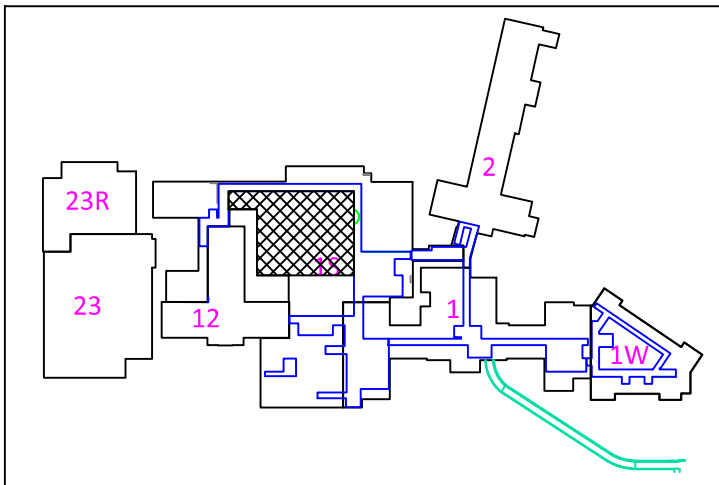
1. REMOVE 120 CIRCUIT TO WATER HEATER INCLUDING LOCAL DISCONNECT SWITCH
2. DISCONNECT EXISTING CIRCUIT FOR RE-CIRCULATION PUMP, FRACTION HP, 120V
3. UNPLUG THE BOOSTER PUMP

NEW WORK NOTES

1. CONNECT TO EXISTING CIRCUIT BREAKER(120V) MADE AVAILABLE BY DEMOLITION OF EXISTING WATER HEATER CONNECTION
2. CONNECT TO NEW BREAKER IN EXISTING PANEL BOARD "RBC GP" LOCATED AT ROOM GB168e
3. CONNECT NEW RE-CIRCULATION PUMP(1/4 HP, 120V) TO EXISTING CIRCUIT, PROVIDE MOTOR RATED DISCONNECT SWITCH
4. CONNECT NEW BOOSTER PUMP TO EXISTING RECEPTACLE



ELECTRICAL NEW WORK FLOOR PLAN - BLDG. 1S
SCALE: 1/16" = 1' - 0"



KEY PLAN
SCALE: NTS



UNITED STATES DEPARTMENT OF VETERANS AFFAIRS
VA MEDICAL CENTER - 1540 SPRING VALLEY DRIVE - HUNTINGTON WV 25704

DRAWING TITLE: ELECTRICAL DEMOLITION & NEW WORK PLANS		PROJECT TITLE: REPLACE HOT WATER HEATERS BLDG. 1S	
APPROVED: CHRISTOPHER ECKLES ASS'T CHIEF, ENGINEERING SERVICE	BUILDING: 1S	PROJECT NUMBER: 581-12-108	DRAWING NUMBER: E2
APPROVED: JOHN KLIM CHIEF, ENGINEERING SERVICE	DRAWN: KAZI HOSSAIN	DATE: MAY '12	DWG. 6 OF 6