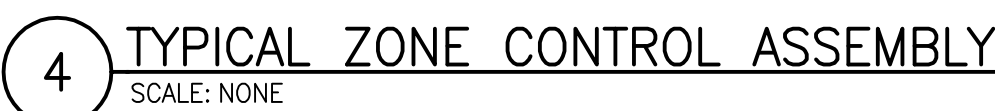


NFPA-13 (2013 ED.) TABLE 9.2.2.1
NOTE: ALL HANGERS SHOWN ON THE DRAWING ARE DIAGRAMMATIC ONLY.
HANGERS ARE TO BE INSTALLED AS PER THE SCHEDULE ABOVE.



----	EXISTING
- - - -	EXISTING TO BE REMOVED
/ / / / / / / /	FIRE PIPING
■	SPRINKLER PIPING
■ ■	DRY SPRINKLER PIPING
●	SPRINKLER DRAIN PIPING
┐	CHECK VALVE
X	CONTROL VALVE
▽	INSPECTOR'S TEST FITTING
— —	PRESSURE GAUGE
	GROUND FACE UNION OR FLANGES
◇	WATERFLOW SWITCH
■ ■	TAMPER SWITCH
◎	PENDENT SPRINKLER HEAD
○ —	RECESSED PENDENT SPRINKLER HEAD
○	UPRIGHT SPRINKLER HEAD
△	SIDEWALL SPRINKLER HEAD
-----	1 HR FIRE RATED WALL
- - - - -	2 HR FIRE RATED WALL
.	SMOKE WALL
=====	AREA OF WORK

NOTE:
ALL SYMBOLS AND ABBREVIATIONS MAY NOT BE INDICATED ON THE DRAWINGS.

ABV CLG	ABOVE THIS CEILING
BLW FLR	BELOW THIS FLOOR
(E)	EXISTING
EC	ELECTRICAL CONTRACTOR
FC	FIRE PROTECTION CONTRACTOR
PC	PLUMBING CONTRACTOR
FHV	FIRE HOSE VALVE
FDC	FIRE DEPARTMENT CONNECTION
SPR	SPRINKLER

3. MODIFY EXISTING SPRINKLER SYSTEM WITHIN THE LIMIT OF CONSTRUCTION AS INDICATED ON THE CONTRACT DRAWINGS FOR THE PROJECT. EXISTING SPRINKLER SYSTEM WITHIN THIS PROJECT CONSTRUCTION AREAS SHALL REMAIN OPERATIONAL. FOR AS LONG AS THE EXISTING SPRINKLER SYSTEM SHALL BE MAINTAINED TO BE MADE TO PROTECT ADEQUATE AND APPROVED TEMPORARY MEANS OF FIRE PROTECTION FOR THE AREAS AFFECTED BY THIS CONSTRUCTION. UNLESS INDICATED OTHERWISE EXISTING FIRE PROTECTION SYSTEM AND EQUIPMENT IN ADJACENT AREAS TO REMAIN.
2. FIRE PROTECTION SPRINKLER INSTALLATION SHALL MEET THE REQUIREMENTS OF THE FOLLOWING:
 - A. NFPA 13 AND 14, 2013 & 101 2012.
 - B. LOCAL AND STATE REGULATIONS AND IBC 2010.
 - C. DVA FIRE PROTECTION MANUAL, SIXTH ED.; REVISED SEPTEMBER 2011.
3. SPRINKLER HEADS SHALL BE FM APPROVED QUICK RESPONSE IN ALL AREAS EXCEPT WHERE SPECIFICALLY PROHIBITED, IN COMPLIANCE WITH VA GUIDELINES AND NFPA REQUIREMENTS.
4. SPRINKLERS THROUGHOUT THE BUILDING TO BE ORDINARY TEMPERATURE RATED EXCEPT FOR ELECTRICAL ROOMS/CLOSETS, HEADS LOCATED WITH 15' OF AUTOCLAVES SHALL BE INTERMEDIATE TEMPERATURE RATED HEADS.
5. SPRINKLER PIPE SIZES AND SPRINKLER HEAD LOCATIONS SHALL COMPLY TO NFPA REQUIREMENTS. SPRINKLER HEADS INDICATED ON DRAWINGS ARE FOR DESIGN COORDINATION AND BUDGETARY PRICING ONLY.
6. PIPE HANGERS INCLUDING SEISMIC PROTECTION TO BE INSTALLED AS REQUIRED BY N.F.P.A. FOR SUPPORTING SPRINKLER PIPING. NO OTHER PIPING AND/OR DEVICES ARE TO BE ATTACHED TO THE SPRINKLER PIPE.
7. PIPING SHALL NOT BE LOCATED IN ANY ELECTRICAL ROOMS/CLOSETS OR TELECOMMUNICATION ROOMS/CLOSETS UNLESS THOSE PIPES SERVE ONLY THAT SPACE.
8. ALL SPRINKLER PIPE TO MAINTAIN A 6'-0" MIN VERTICAL CLEARANCE FROM TOP OF ELECTRICAL CONTROL PANELS & SWITCHGEAR/TRANSFORMERS.
9. SPRINKLER ZONE CONTROL VALVE ASSEMBLY TO CONSIST OF CONTROL VALVE, CHECK VALVE, FLOW SWITCH, SELF-CONTAINED TEST AND DRAIN ASSEMBLY AND PRESSURE GAGE, ON THE SPRINKLER MAIN BRANCH SERVING EACH SMOKE ZONE.
10. INSTALL PIPING SO THAT VALVES ARE ACCESSIBLE AND STEMS EXTEND VERTICALLY UP. ALL CONTROL VALVES SHALL BE EQUIPPED WITH TAMPING SWITCHES.
11. ALL WATER FLOW SWITCHES MUST BE ISOLATED BY MEANS OF A FITTING OR UNION ON BOTH SIDE TO FACILITATE REMOVAL AND SERVICE OF THE FLOW SWITCH.
12. THE FIRE PROTECTION CONTRACTOR SHALL PROVIDE THE QUANTITY OF SPRINKLER HEADS AS REQUIRED TO MAINTAIN THE MINIMUM COVERAGE REQUIRED BY NFPA 13 IN ALL AREAS THE BUILDING.
13. COORDINATE THE EXACT LOCATION OF ALL SPRINKLER HEADS, PIPING, EQUIPMENT, AND DEVICES WITH ARCHITECTURAL DRAWINGS AND THE RESPECTIVE DRAWINGS OF PIPING, DUCTWORK, DIFFUSERS, BEAMS, LIGHTS, ETC. THIS CONTRACTOR SHALL VERIFY THE EXACT LOCATION OF THESE COMPONENTS IN THE FIELD AND DOCUMENT ON THEIR SUBMITTALS.
14. PROVIDE COMPLETE AND FUNCTIONAL FIRE PROTECTION SYSTEMS FOR THE PROJECT. THE SYSTEMS SHALL COMPLY TO THE SPECIFICATIONS AND AS SHOWN ON DRAWINGS. ITEMS OR WORK NOT SHOWN OR SPECIFIED, BUT REQUIRED FOR COMPLETE SYSTEMS, SHALL BE PROVIDED AND CONFORM TO ACCEPTED TRADE PRACTICES. THE DRAWINGS AND SPECIFICATIONS ARE PRESENTED TO IDENTIFY SPECIFIC SYSTEMS AND EQUIPMENT AND SERVE TO EXPAND ON THE PRIMARY CONTRACT REQUIREMENTS OF PROVIDING COMPLETE SYSTEMS. THE DRAWINGS ARE DIAGRAMMATIC AND INDICATE THE GENERAL ARRANGEMENT AND ROUTING OF THE SYSTEMS INCLUDED IN THIS CONTRACTORS WORK.
15. SPRINKLER CONTRACTOR IS RESPONSIBLE FOR ALL WORK RELATED TO ISOLATING, SHUTTING DOWN, DRAINING, FILLING AND TESTING SYSTEMS TO ALLOW FOR THE COMPLETION OF WORK. INTERRUPTIONS TO EXISTING SERVICES AND SYSTEMS SHALL BE AS SHORT AS POSSIBLE AT A TIME AND LOCATION APPROVED WITH THE COR. INCLUDE ALL PREMIUM TIME ASSOCIATED WITH THE INTERRUPTIONS. ALL SYSTEM INTERRUPTIONS SHALL BE SCHEDULED WITH THE COR AND COORDINATED WITH OTHER TRADES.
16. THE CONTRACTOR WILL BE RESPONSIBLE FOR ENSURING THAT ALL RULES AND REGULATIONS, INCLUDING THOSE WHICH MAY BE ISSUED BY THE OWNER, ARE BEING OBSERVED, PARTICULARLY WORKPLACE SAFETY AND THE CONDUCT OF ALL THOSE EMPLOYED DIRECTLY AND INDIRECTLY BY HIM ON THE PREMISES, AND THE OWNER'S EMPLOYEES WHO MAY BE IMPACTED OR AFFECTED BY CONSTRUCTION ACTIVITIES. THE CONTRACTOR WILL INSTALL SIGNAGE, BARRIERS, AND OTHER MEANS TO PROVIDE WARNING AND PERSONNEL SAFETY. PLACEMENT OF THESE ITEMS WILL BE COORDINATED WITH THE OWNER AND HIS ONGOING OPERATIONS AND WILL PROMPTLY BE RESTORED WHEN WORK IN A PARTICULAR AREA HAS BEEN COMPLETED.
17. CONTRACTOR SHALL MAKE ALL NECESSARY SUBMISSIONS AND OBTAIN ALL NECESSARY PERMITS AND APPROVALS PRIOR TO STARTING FABRICATION AND CONSTRUCTION.

1. SYSTEM TYPE; WET PIPE
2. SPRINKLER HEAD SPACING AND PIPE SIZING SHALL BE:
 - a. PATIENT AREAS, TOILET ROOMS, TESTING AND OFFICE AREAS; LIGHT HAZARD (0.10 GPM/SQ.FT. OVER 1500 SQ.FT, 225 SQ.FT. PER SPRINKLER HEAD)
 - b. MECHANICAL ROOMS; ORDINARY GROUP I HAZARD (0.15 GPM/SQ.FT. OVER 1500 SQ.FT, 130 SQ.FT PER SPRINKLER HEAD)
 - c. STORAGE ROOMS AND LABS; ORDINARY GROUP II HAZARD (0.20 GPM/SQ.FT. OVER 1500 SQ.FT, 130 SQ.FT. PER SPRINKLER HEAD)
3. PROVIDE FOR AN ADDITIONAL WATER ALLOWANCE OF 250 GPM FOR INSIDE AND OUTSIDE HOSE STREAMS TO THE SPRINKLER HYDRAULIC REQUIREMENTS.
4. THE CALCULATED DEMAND INCLUDING HOSE STREAM REQUIREMENTS SHALL FALL NO LESS THAN 10 PERCENT BELOW THE AVAILABLE WATER SUPPLY.
5. SYSTEM SHALL BE DESIGNED ON A HYDRAULICALLY CALCULATED BASIS UTILIZING THE AREA DENSITY METHOD PER THE NFPA 13 BY THE SPRINKLER CONTRACTOR. CALCULATIONS AND SHOP DRAWINGS SHALL BE SIGNED AND SEALED BY A PROFESSIONAL ENGINEER LICENSED IN THE STATE OF WEST VIRGINIA.
6. CONDUCT A NEW WATER SUPPLY FLOW PRESSURE TEST. SPRINKLER PIPE SIZES SHALL BE DETERMINED BY THE HYDRAULIC CALCULATIONS BASED ON THE RESULTS OF THIS TEST.

Office of
Construction
and Facilities
Management



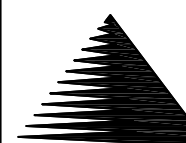
PRINTS OF THIS DRAWING SHALL NOT BE USED FOR ANY PURPOSE WHATSOEVER WITHOUT THE SEAL AND SIGNATURE OF THE PROFESSIONAL ENGINEER.		
NO.	DESCRIPTION	DATE

PF&A

PF&A DESIGN
ARCHITECTURE, PLANNING, INTERIORS
World Trade Center
101 West Main Street, Suite 7000
Norfolk, VA 23510
Phone: 757-471-0537
Fax: 757-471-4206
www.pfa-architect.com - Project No: 2194.14A



J M Smith Engineering, LLC
Civil Engineers and Land Planners
A Service Disabled Veteran Owned
Small Business
155 CLARKESVILLE ST
CORNELIA, GEORGIA 30531
PHONE: (706)894-2331
FAX: (678)267-3731
www.jmsmithengineering.com



Miller-Remick LLC
M.E.P. & Structural Engineering
A Service Disabled Veteran Owned
Small Business
1010 KINGS HIGHWAY SOUTH
CHERRY HILL, NEW JERSEY 0803
PHONE: (856)429-4000
FAX: (856)429-5002
MR PROJECT NO: 0499-0057



Drawing Title	FIRE PROTECTION GENERAL NOTES, LEGEND AND DETAILS
---------------	---

Approved: Project Director

Project Title	MARTINSBURG CONSTRUCT DENTAL OUTPATIENT CENTER
---------------	--

Location	VA MEDICAL CENTER
----------	-------------------

Date	03-08-2017
------	------------

Checked
GFE

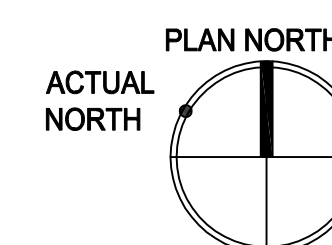
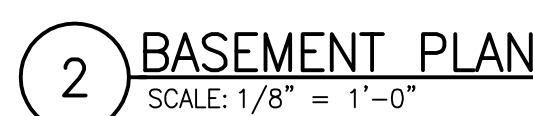
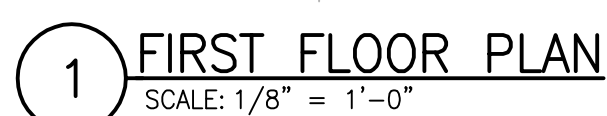
Drawn
PD

Project Number	613-118
Building Number	518

Drawing Number

FX001

	UPRIGHT SPRINKLER HEADS ORDINARY HAZARD
	RECESSED PENDENT SPRINKLER HEADS LIGHT HAZARD
	RECESSED PENDENT SPRINKLER HEADS ORDINARY HAZARD
	SIDEWALL SPRINKLER HEADS ORDINARY HAZARD



Office of
Construction
and Facilities
Management



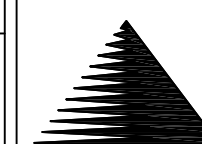
NO.	DESCRIPTION	DATE

PF&A

PF&A DESIGN
ARCHITECTURE, PLANNING, INTERIORS
World Trade Center
101 West Main Street, Suite 7000
Norfolk, VA 23510
Phone: 757-471-0537
Fax: 757-471-4205
www.pfa-architect.com - Project No: 2194.14A



J M Smith Engineering, LLC
Civil Engineers and Land Planners
A Service Disabled Veteran Owned
Small Business
155 CLARKESVILLE ST
CORNELIA, GEORGIA 30631
PHONE: (706)894-2331
FAX: (678)267-3731
www.jmsmithengineering.com



Miller-Remick LLC
M.E.P. & Structural Engineering
A Service Disabled Veteran Owned
Small Business

1010 KINGS HIGHWAY SOUTH
CHERRY HILL, NEW JERSEY 08035
PHONE: (856)429-4000
FAX: (856)429-5002

MR PROJECT NO: 0499-0057



Approved: Project Director

Location	VA MEDICAL CENTER
----------	-------------------

Drawn
PD

Drawing Number

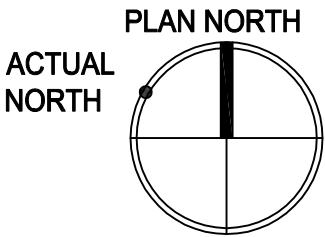
GENERAL SHEET NOTES:

1. REFER TO DRAWING FX001 FOR FIRE PROTECTION SYMBOL LEGEND, NOTES & DETAILS.

SPRINKLER HEAD LEGEND:

- UPRIGHT SPRINKLER HEADS
ORDINARY HAZARD
- RECESSED PENDENT SPRINKLER HEADS
LIGHT HAZARD
- RECESSED PENDENT SPRINKLER HEADS
ORDINARY HAZARD

1 SECOND FLOOR PLAN
SCALE: 1/8" = 1'-0"



BID DOCUMENTS - FOR CONSTRUCTION
FULLY SPRINKLERED

PRINTS OF THIS DRAWING SHALL NOT BE USED FOR ANY PURPOSE WHATSOEVER WITHOUT THE SEAL AND SIGNATURE OF THE PROFESSIONAL ENGINEER.		
NO.	DESCRIPTION	DATE

CONSULTANTS:



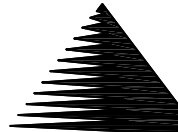
PF&A DESIGN
ARCHITECTURE, PLANNING, INTERIORS
World Trade Center
101 West Main Street, Suite 7000
Norfolk, VA 23510
Phone: 757-471-0537
Fax: 757-471-4205
www.pfa-architect.com - Project No: 2194.14A



J M Smith Engineering, LLC
Civil Engineers and Land Planners
A Service Disabled Veteran Owned
Small Business
155 CLARKESVILLE ST
CORNELIA, GEORGIA 30531
PHONE: (706)894-2331
FAX: (706)897-3751
www.jmsmithengineering.com



MILLER-REMICK LLC
PROFESSIONAL ENGINEER



Miller-Remick LLC
M.E.P. & Structural Engineering
A Service Disabled Veteran Owned
Small Business
1010 KINGS HIGHWAY SOUTH
CHERRY HILL, NEW JERSEY 08034
PHONE: (609)429-4000
FAX: (609)429-5002
MR PROJECT NO: 0499-0057



Drawing Title
FIRE PROTECTION
SECOND FLOOR PLAN

Approved: Project Director

Project Title
MARTINSBURG
CONSTRUCT DENTAL
OUTPATIENT CENTER

Location
VA MEDICAL CENTER
MARTINSBURG, WV

Date
03-08-2017

Checked
GFE

Drawn
PD

Project Number
613-118
Building Number
518

Drawing Number
FX102

Office of
Construction
and Facilities
Management

