

CONSTRUCTION PARKING

WATERMAN CONSTRUCTION PARKING

PROJECT LOCATION

20

61

26

19

2

34

3

1

4

60

10

13

12

16

6

21

5

7

BULEWLEY

CONSTRUCTION ENTRANCE

KELLOGG AVENUE

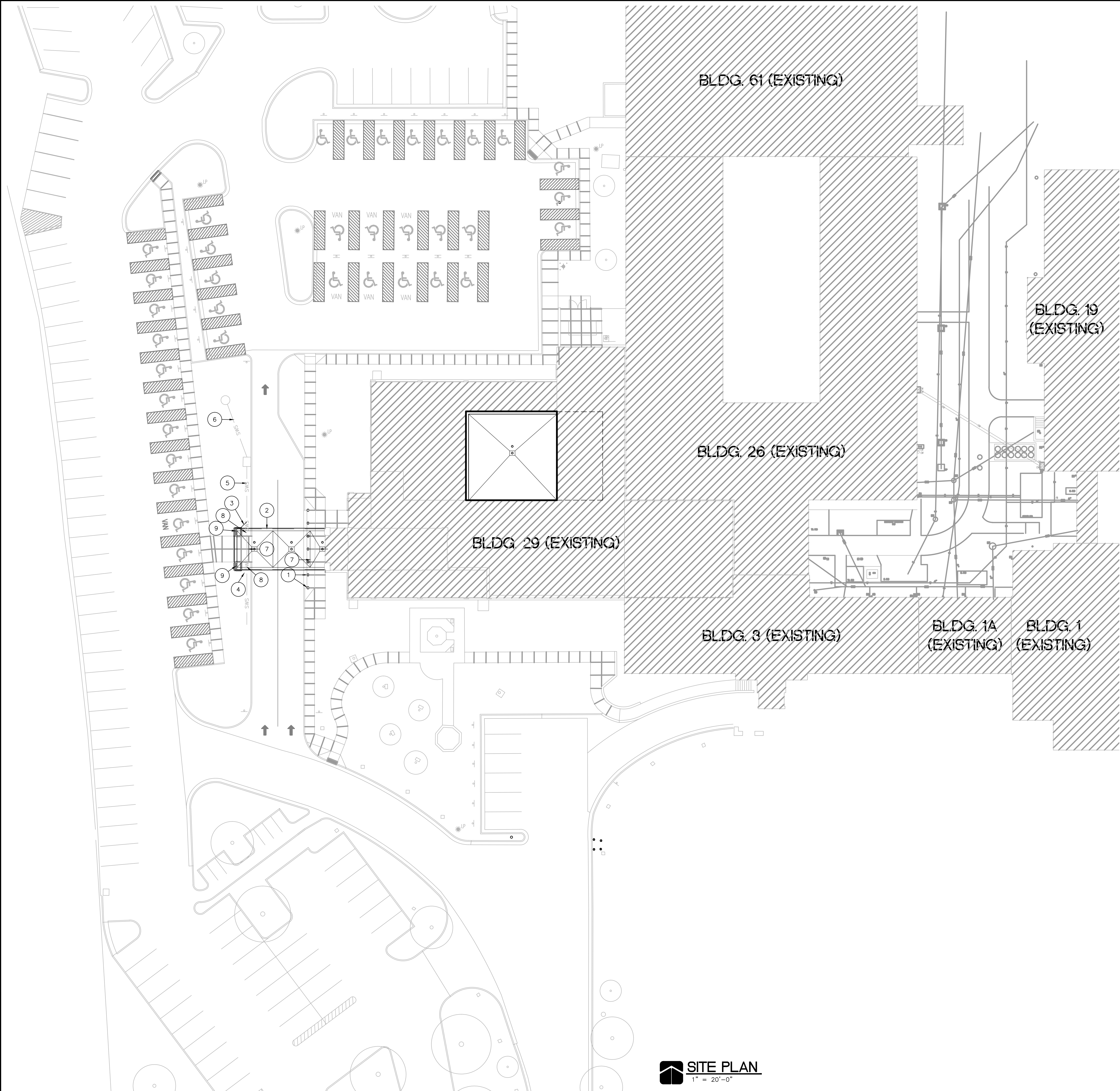
EDGEWOOD

LOCATION MAP

N.T.S.

VA FORM 08-6231

three inches = one foot
one and one half inches = one foot
one inch = one foot
three quarters inch = one foot
one half inch = one foot
three eighths inch = one foot
one quarter inch = one foot
one eighth inch = one foot



SITE PLAN NOTES

1. PRECAST CONCRETE BOLLARD - SEE DTL. 1/AS-102, DELETE IN DEDUCT ALT. NO. 1
2. CANOPY OVERHANG ABOVE, DELETE IN DEDUCT ALT. NO. 4
3. PROPOSED 3" RAIN LEADERS, CONNECT TO 6" RAIN LEADER AS NEEDED, DELETE IN DEDUCT ALT. NO. 4
4. RESEED ALL DISTURBED GRADE.
5. EXISTING 6" RAIN LEADER.
6. EXISTING STORM WATER SEWER.
7. EXISTING 4" SIDE WALK AND HANDCAP CURB RAMP
8. NEW 4" THICK REINFORCED CONCRETE SIDEWALK, DELETE IN DEDUCT ALT. NO. 4
9. CONCRETE COL. & FOOTING, REF. STRUCTURE, DELETE IN DEDUCT ALT. NO. 4

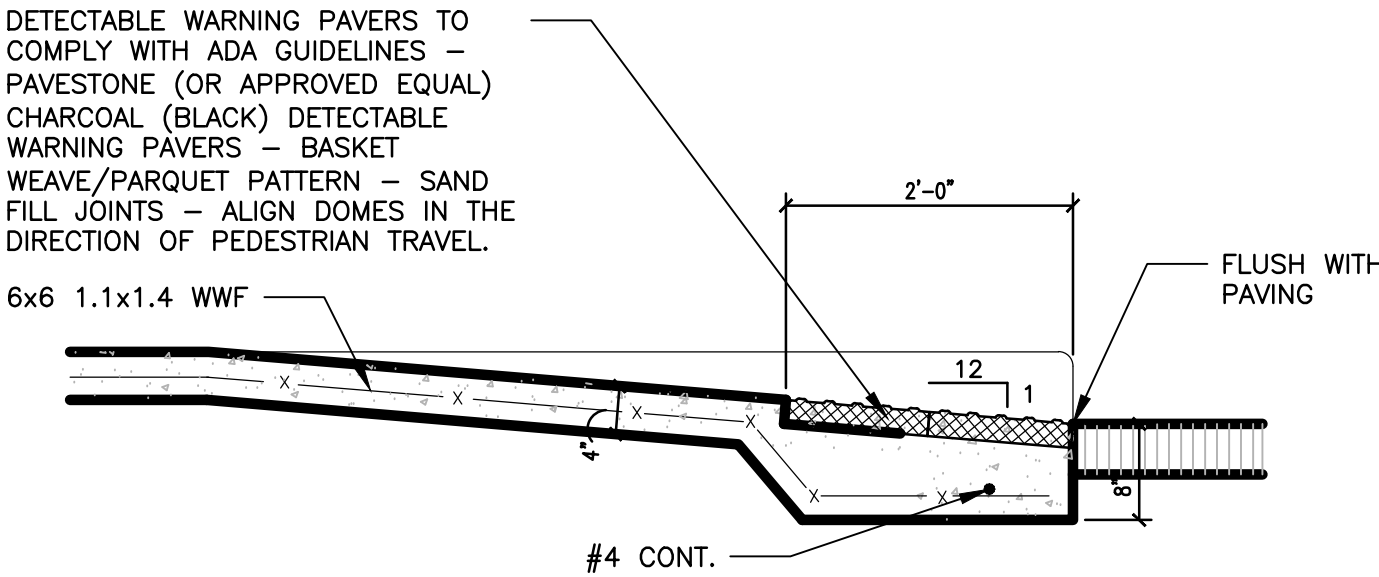
GENERAL NOTES

1. FIELD VERIFY DIMENSIONS AND SITE CONDITIONS PRIOR TO CONSTRUCTION. NOTIFY VA IMMEDIATELY IF ANY DISCREPANCIES ARE NOTED.
2. CONTACT KANSAS ONE-CALL (316-687-2102) TO LOCATE ALL UTILITIES PRIOR TO STARTING CONSTRUCTION
3. SEE SPECIFICATIONS FOR GEOTECHNICAL REPORT. FOLLOW ALL RECOMMENDATIONS, INCLUDING MOISTURE CONDITIONING. INCLUDE ANY SHALE BEDROCK REMOVAL REQUIRED BY CONSTRUCTION IN BID PRICE.

LEGEND

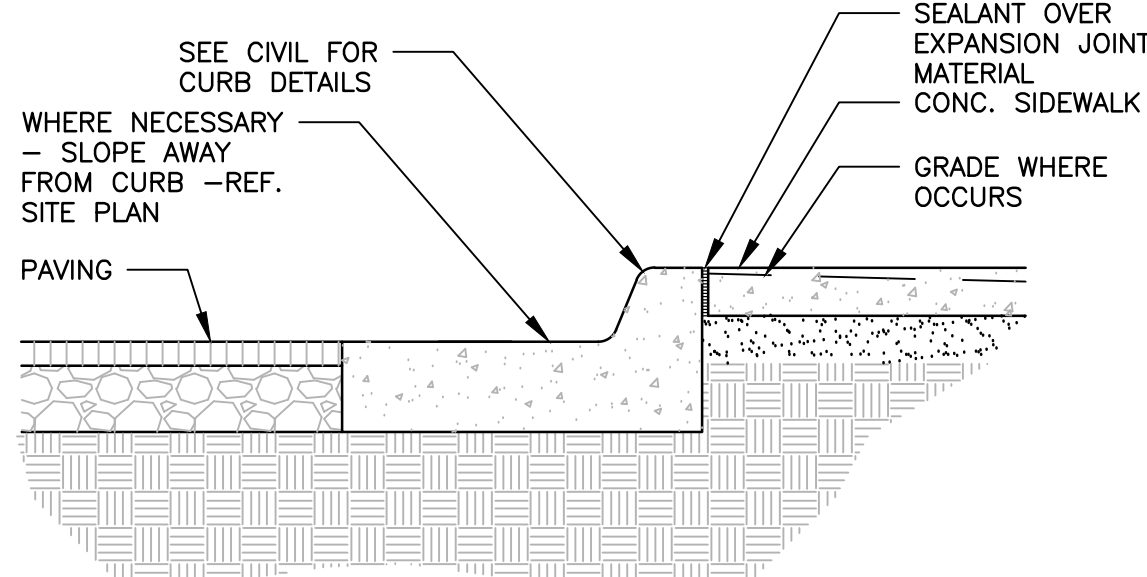
- 1 PLAN NOTE
- UGE — UNDERGROUND ELECTRIC
— GAS — GAS LINE
— — STEAM LINE
— SWS — STORM WATER SEWER
— WTR — WATER LINE
- SET BAR & CAP
○ FOUND 5/8" BAR
● BOLLARD
○ COLUMN
H MEASURED
P PLATTED
D DEEDED
E ELECTRIC TRANSFORMER
T TREES
A AREA DRAIN
■ FOUND CONC. BLOCK
◆ FIRE HYDRANT
- FOUND SAN. MANH.
● GAS METER
○ SEWER CLEANOUT
○ GAS VALVE
○ WATER VALVE
○ WATER METER
XXXX FENCE LINE
○ CABLE PEDESTAL
○ PHONE PEDESTAL
○ LIGHT POLE
○ POWER POLE

CAUTION:
EXISTING UNDERGROUND UTILITIES AND THEIR LOCATION, AS SHOWN ON THIS DRAWING, ARE APPROXIMATE LOCATIONS ONLY TO REPRESENT THE AVAILABLE INFORMATION OBTAINABLE FOR DESIGN.
LOCATION INFORMATION HAS BEEN OBTAINED FROM THE VARIOUS UTILITY COMPANIES AND/OR VETERANS ADMINISTRATION RECORD DRAWINGS, AND WHERE ACCESSIBLE FROM THE SURFACE, LOCATIONS AND ELEVATIONS HAVE BEEN VERIFIED BY FIELD MEASUREMENTS.



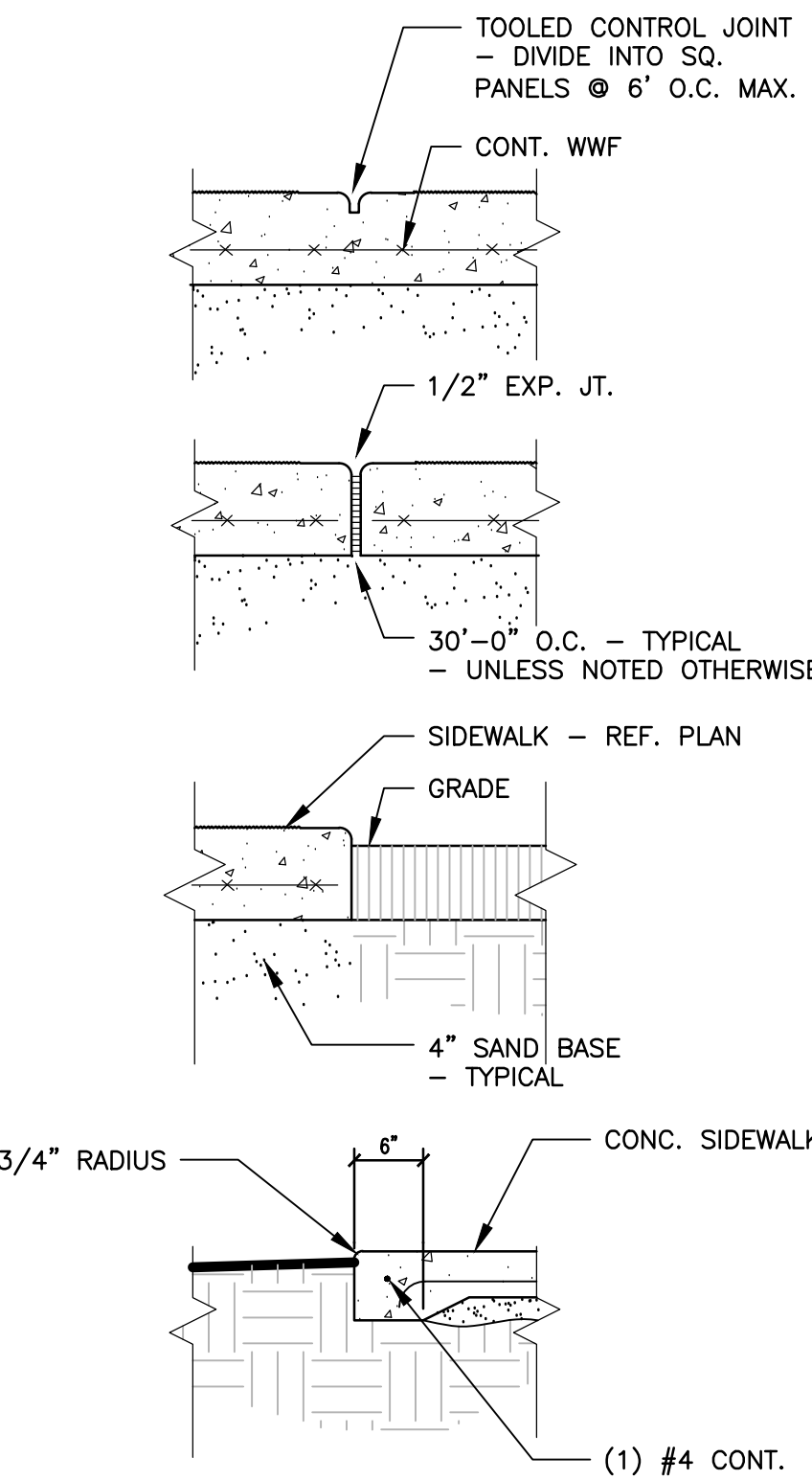
3 CURB RAMP DTL

3/4" = 1'-0"



2 CURB + PAVEMENT DTL

3/4" = 1'-0"

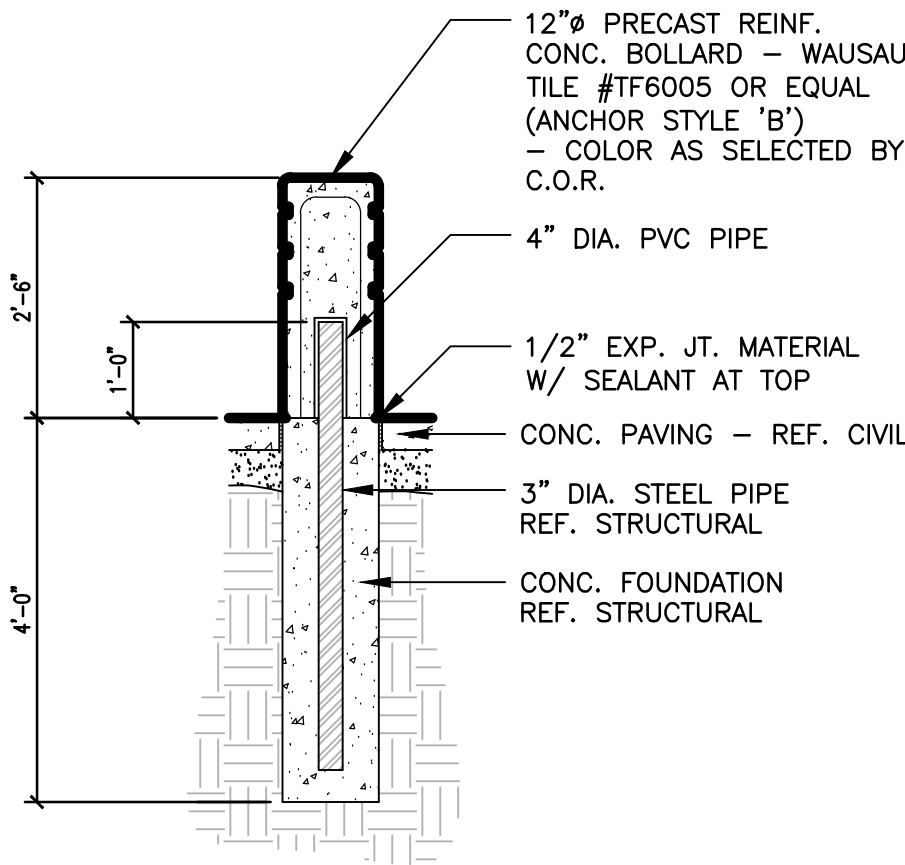


8 CURB + PAVEMENT DETAILS

3/4" = 1'-0"

1 PRECAST BOLLARD

1/2" = 1'-0"



SITE PLAN

1" = 20'-0"

ARCHITECT:



WELLNER architects inc

802 Broadway . 4th Floor . Kansas City . MO . 64105
p.816.221.0017 f.816.221.9456 e.wai@wellner.com



CONSULTANTS:

LEIGH AND OKANE STRUCTURAL ENGINEERS
INSITE GROUP MECHANICAL, ELECTRICAL, AND PLUMBING ENGINEERS
PSC-FIRE PROTECTION AND CODE CONSULTANT
PROBALANCE COMMISSIONING AGENT
CMR ESTIMATING

Drawing Title

ARCHITECTURAL SITE PLAN

Approved Project Director

VAPACHS PLANNING AND ENGINEERING

Project Title

WOMEN'S CLINIC ADDITION

Location

5500 E. KELLOGG WICHITA KS

Date

JUNE 29TH, 2016

Checked

JEW

Drawn

MAE

Project Number

589A7-CSH-403

Building Number

B29

Drawing Number

AS-102

Dwg. 5 of 55

OFFICE OF CONSTRUCTION AND FACILITIES MANAGEMENT



Department of Veterans Affairs