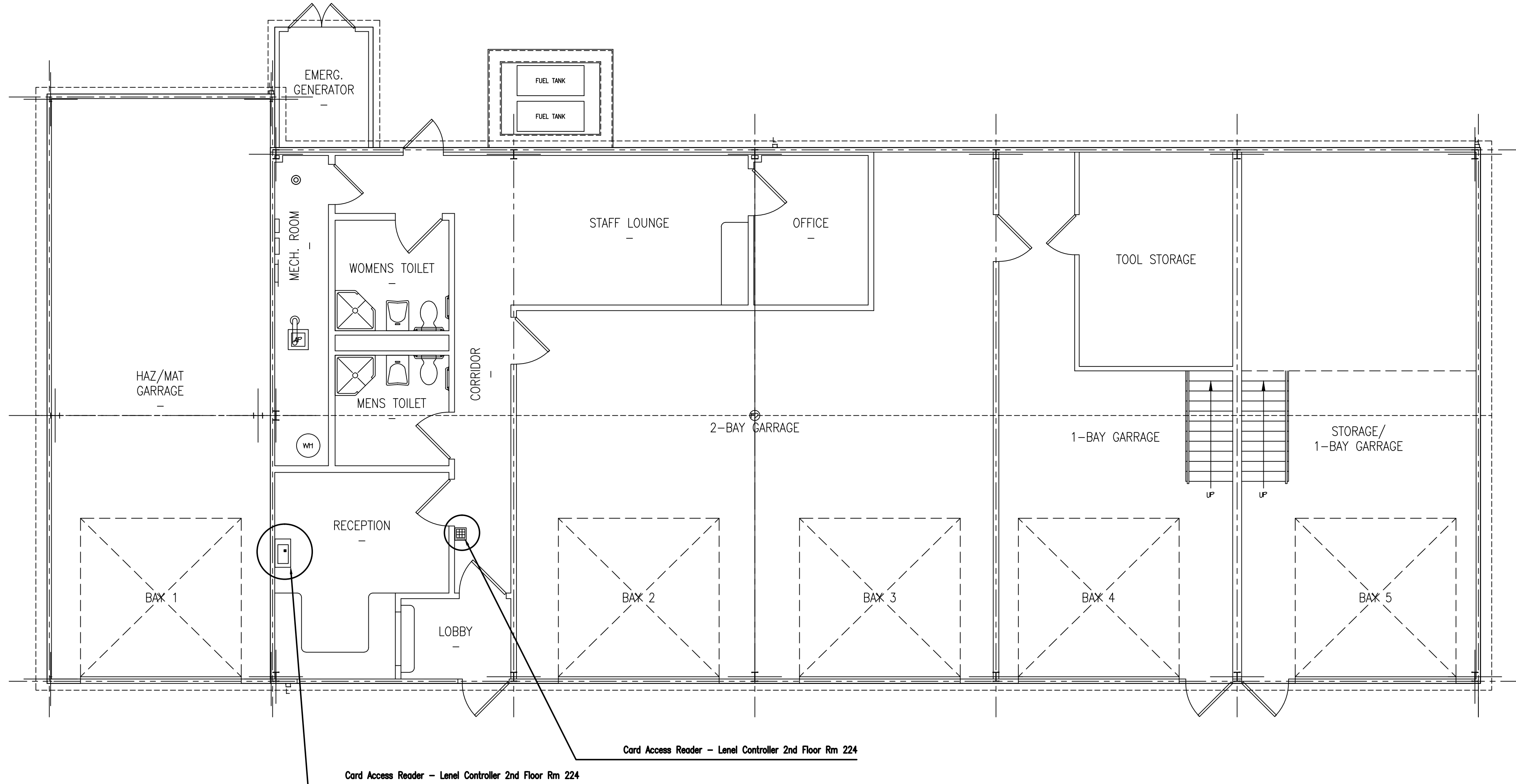


three inches = one foot
one and one half inches = one foot
one inch = one foot
three quarters inch = one foot
one half inch = one foot
three eighths inch = one foot
one quarter inch = one foot
one eighth inch = one foot



NOTES

- NOTE 1: CONTRACTOR WILL INSTALL NEW ACCESS CARD READERS, KEY LOCKBOXES, AND SAFES THAT WILL COMMUNICATE VIA THE EXISTIN LENSEL NETWORK.
- NOTE 2: NOTE 4: CONTRACTOR WILL USE CAT6 NETWORK CABLE.
- NOTE 3: DO NOT USE THE STAIRWELL TO RUN VERTICAL CONDUIT FROM FLOOR TO FLOOR.
- NOTE 4: ALL WIRING INSIDE STAIRWELLS MUST BE INSTALLED IN CONDUIT.
- NOTE 5: ALL WALL PENETRATIONS THROUGH FIRE RATED BARRIERS WILL BE FIRE STOPPED.
- NOTE 6: VERTICAL CONDUIT RISER MUST BE RUN IN MECHANICAL ROOMS.
- NOTE 7: COORDINATE LOCATION OF ALL NEW DEVICES WITH COTR PRIOR TO INSTALLATION.
- NOTE 8: CONTRACTOR IS RESPONSIBLE FOR DEMO OF EXISTING EQUIPMENT AND ANY ASSOCIATED PATCHING, REPAIR, CEILING TILE REPLACEMENT AND ASSOCIATED ANGLIARY WORK.

SYMBOLS

- Access Card Reader W/Keypad
- Gun Safe
- Key Lockbox
- 1 HR. FIRE RATED BARRIER
- 2 HR. FIRE RATED BARRIER

Revisions		Date		CONSULTANTS:	ARCHITECT/ENGINEERS:	NORTH: 	APPROVED:	APPROVED:	Drawing Title Architectural Floor Plan Ground Floor Scale: NTS	Project Title Install Keyboxes + Safes in Various Bldgs	Project Number 620A4-11-256	Engineering Service Department of Veterans Affairs
							APPROVED:	APPROVED:			Building(s) Number 88	
							APPROVED:	APPROVED:	Approved Director , VA/HVCS:	Location Castle Point, New York	Drawing Number TY-03	
							APPROVED:	APPROVED:	Approved Chief of Engineering	Date 03/15/2012	Checked JP	
											Sheet 3 of 7	