

LOS ANGELES NATIONAL CEMETERY COLUMBARIUM EXPANSION PHASE 1B

VA PROJECT # 898CM2032

CONSTRUCTION DOCUMENT CD2 SUBMITTAL

PROJECT TEAM

ARCHITECTURAL:

LEO A DALY
550 HOPE STREET, 27TH FLOOR
LOS ANGELES, CA 90017
P(213) 629-0100

CIVIL / SURVEY:

KPFF
6080 CENTER DRIVE, SUITE 700
LOS ANGELES, CA 90045
P(310) 665-2800

LANDSCAPE:

THE LA GROUP
40 LONG ALLEY
SARATOGA SPRINGS, NY 12866
P(518) 587-8100

IRRIGATION:

AQUA ENGINEERING
375 EAST HORSETOOTH ROAD, BLDG. 2-202
FORT COLLINS, CO 80525-3196
P(970) 372-6104

STRUCTURAL:

KPFF
6080 CENTER DRIVE, SUITE 700
LOS ANGELES, CA 90045
P(310) 665-2800

MECHANICAL / PLUMBING:

MAZZETTI
2201 DUPONT DRIVE, SUITE 800
IRVINE, CA 92612
P(949) 475-5550

ELECTRICAL:

MAZZETTI
201 DUPONT DRIVE, SUITE 800
IRVINE, CA 92612
P(949) 475-5550

COST ESTIMATING:

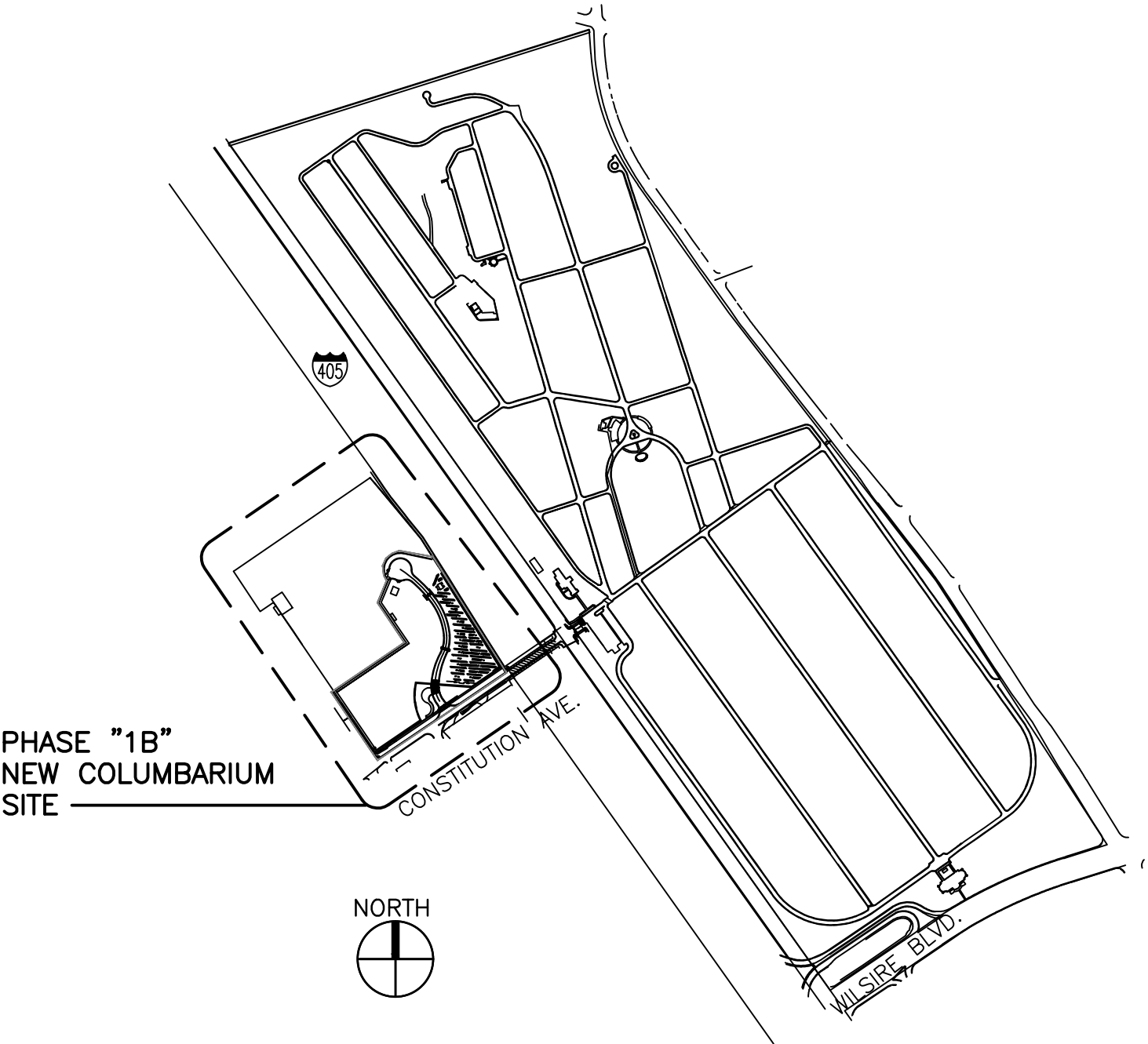
CUMMING
523 WEST 6TH STREET, SUITE 1001
LOS ANGELES, CA 90016
P(213) 408-4518

GRAVESITE SUMMARY

WALL #	# NICHES HIGH	TOTAL NICHES	MEMORIAL WALL #	MEMORIAL MARKERS*	TOTAL ACREAGE**
A1	3	120			
A2	3	120			
A3	5	185	MWA3	36	
A4	5	185	MWA4	36	
A5	3	114			
A6	3	114			
A7	5	215	MWA7	36	
A8	5	215	MWA8	36	
A9	3	147			
A10	3	147			
A11	5	290	MWA11	36	
A12	5	290	MWA12	36	
A13	3	207			
A14	3	207			
A15	5	305	MWA15	36	
A16	5	305	MWA16	36	
A17	3	234			
A18	3	234			
A19	5	490	MWA19	36	
A20	5	490	MWA20	36	
A21	3	363			
A22	3	363			
A23	5	715	MWA23	36	
A24	5	715	MWA24	36	
A25	3	375			
A26	3	375			
A27	5	435	MWA27	36	
A28	5	435	MWA28	36	
A29	3	132			
A30	3	132			
A31	5	520			
A32	5	640			
A33	5	545			
GRAND TOTAL:		10,359		504	4.40 AC

NOTE:
* EACH MEMORIAL WALL CONSISTS OF TWO (2) SECTIONS;
THE FIRST WITH MARKERS 1-18 AND THE SECOND WITH
MARKERS 19-36
** TOTAL ACREAGE DOES NOT INCLUDE PALM TREE
NURSERY

VICINITY MAP



No.	Description	Date	CONSULTANTS:	Seals and Signatures	ARCHITECT/ENGINEERS:	Drawing Title	Project Title	VA Project Number	Office of Construction and Facilities Management
					LEO A DALY	COVER SHEET	COLUMBARIUM EXPANSION PHASE 1B	898CM2032	
					550 South Hope Street, 27th Floor Los Angeles, California 90071, USA 213-629-0100 F213-629-0070	Approved Project Director	Location	Project Number	
							LOS ANGELES NATIONAL CEMETERY 290 CONSTITUTION AVENUE LOS ANGELES, CA 90049	046-10073-002	
							Date	Checked	Drawn
							01/30/2017	P.T.	W.L.
								Drawing Number	
								X1	
								Dwg. 1 of 181	

11

three inches = one foot
one and one half inches = one foot
one inch = one foot
three quarters inch = one foot
one half inch = one foot
three eighths inch = one foot
one quarter inch = one foot
one eighth inch = one foot

No.	Description	Date

CONSULTANTS:

Seals and Signatures

ARCHITECT/ENGINEERS:

550 South Hope Street, 27th Floor
Los Angeles, California 90071, USA
213-629-0100 F213-629-0070

PLANNING
ARCHITECTURE
ENGINEERING
INTERIORS

EST. 1915

Drawing Title
PROJECT INFORMATION PROJECT SYMBOLS
Approved Project Director

Project Title	COLUMBARIUM EXPANSION PHASE 1B
Location	LOS ANGELES NATIONAL CEMETERY 990 CONSTITUTION AVENUE LOS ANGELES, CA 90049
Date	01/30/2017
Checked	P.T.
Drawn	W.L.
VA Project Number	898CM2032
Project Number	046-10073-002
Drawing Number	X3
Dwg. 3 of 181	
Office of Construction and Facilities Management	Department of Veterans Affairs

PROJECT SYMBOLS

BUILDING SECTION

WALL SECTION

EXTERIOR ELEVATION

INTERIOR ELEVATION

SECTION DETAIL REFERENCE

DETAIL REFERENCE

DRAWING TITLE SYMBOL

1 View Name
SCALE: 1/8" = 1'-0"

MATCH LINE REFERENCE

NORTH ARROW

TRUE NORTH PROJECT NORTH

LAYOUT GRID LINES

STRAIGHT BREAK LINE SYMBOL

ROOM NAME AND NUMBER

LEVEL LINE

REVISION NUMBER AND EXTENT

KEYNOTE TAG

FINISH MATERIAL TAG

WALL TAG

PROJECT GENERAL NOTES

- A. THE FOLLOWING GENERAL NOTES APPLY TO THE ENTIRE SET OF DRAWINGS LISTED BY THE "SHEET INDEX".
- B. FOR GENERAL NOTES, ABBREVIATIONS, AND SYMBOLS APPLICABLE ONLY TO THE DRAWINGS OF ONE DISCIPLINE, REFER TO THE DRAWINGS OF THAT DISCIPLINE - SEE "SHEET INDEX".
- C. THE COMPLETE SET OF DRAWINGS CONSIST OF ALL DRAWINGS LISTED BY THE "SHEET INDEX". THE WORK DESCRIBED IN ONE SHEET MAY BE REFERENCED AND MAY BE AFFECTED BY WORK DESCRIBED ON ANOTHER SHEET. THE WORK DESCRIBED IN ONE DISCIPLINE MAY BE REFERENCED AND AFFECTED BY WORK OF ANOTHER DISCIPLINE. PARTIAL SETS OF DRAWINGS ARE INCOMPLETE AND SHOULD NOT BE REDISTRIBUTED OR UTILIZED BY THE THE CONTRACTOR.
- D. IT IS THE CONTRACTOR'S RESPONSIBILITY TO REVIEW AND COORDINATE THE WORK OF ALL SUBCONTRACTORS, TRADES AND SUPPLIERS WITH REQUIREMENTS OF THE CONTRACT DOCUMENTS BEFORE COMMENCING CONSTRUCTION, AND TO ASSURE THAT ALL PARTIES ARE AWARE OF ALL REQUIREMENTS, REGARDLESS OF WHERE THE REQUIREMENTS OCCUR IN THE CONTRACT DOCUMENTS, WHICH MIGHT AFFECT THE WORK OF THAT PARTY.
- E. THE ARCHITECTURAL FLOOR PLANS, REFLECTED CEILING PLANS, SECTIONS, AND ELEVATIONS SHOW THE LOCATION OF MANY-BUT NOT ALL - EXPOSED PARTS OF THE WORK. FOR ITEMS NOT LOCATED EXACTLY, APPLY THE RULES INDICATED BY THE DRAWING TYPICAL MOUNTING HEIGHTS AND CONFIGURATION DIAGRAMS TO DETERMINE THE EXACT LOCATION OF EACH EXPOSED PART OF THE WORK.
- F. REFER TO THE STRUCTURAL, LANDSCAPE, CIVIL, IRRIGATION, MECHANICAL, ELECTRICAL, PLUMBING, AND OTHER SPECIALTY ENGINEERING DRAWINGS FOR THE DETAILED DESIGN OF THE DISCIPLINE OF WHICH PORTIONS MAY ALSO BE SHOWN ON THE ARCHITECTURAL DRAWINGS.
- G. ALL PARTS OF THE WORK - INCLUDING MATERIALS, METHODS, ASSEMBLIES, ETC - SHALL COMPLY WITH ALL APPLICABLE GOVERNING RULES, CODES, REGULATIONS, ORDINANCES, AND LAWS OF ALL FEDERAL, STATE DISTRICT, TERRITORIAL AND LOCAL GOVERNMENT AUTHORITIES HAVING JURISDICTION OVER THE DESIGN, CONSTRUCTION, AND OCCUPANCY OF THE PROJECT, WHETHER LISTED BY THE CONTRACT DOCUMENTS OR NOT.
- H. NO PART OF THE CONTRACT DOCUMENTS SHALL BE CONSTRUED TO REQUIRE OR PERMIT WORK CONTRARY TO AN APPLICABLE GOVERNING RULE, CODE, REGULATION, ORDINANCE, OR LAW.
- J. IF A CONFLICT EXISTS BETWEEN THE CONTRACT DOCUMENTS AND A REGULATORY REQUIREMENT, THE CONTRACTOR SHALL COMPLY WITH THE ONE ESTABLISHING THE MORE STRINGENT OR RESTRICTIVE REQUIREMENT:
- a. THE DRAWINGS AND SPECIFICATIONS MAY SET FORTH MORE DETAILED, MORE SPECIFIC, AND/OR MORE RESTRICTIVE REQUIREMENTS THAN THOSE SET FORTH BY THE APPLICABLE REGULATORY REQUIREMENTS, WHERE THE DRAWINGS AND SPECIFICATIONS PROVIDE MORE DETAILED, MORE SPECIFIC, AND/OR MORE RESTRICTIVE REQUIREMENTS, THE CONTRACTOR SHALL COMPLY WITH THOSE REQUIREMENTS.
- b. WHERE THE APPLICABLE REQUIREMENTS OF THE REFERENCED RULES, CODES, REGULATIONS, ORDINANCES, OR LAWS ARE MORE RESTRICTIVE THAN THAT SET FORTH BY THE DRAWINGS AND SPECIFICATION, THE CONTRACTOR SHALL COMPLY WITH ALL SUCH MORE RESTRICTIVE REQUIREMENTS. ALTHOUGH SUCH REQUIREMENTS MAY NOT BE ILLUSTRATED BY THE DRAWINGS AND SPECIFICATIONS.
- K. APPLICABLE PORTIONS OF THE CODES, REGULATIONS, AND STANDARDS LISTED HERE ARE INCORPORATED BY REFERENCE INTO THE REQUIREMENTS OF THIS CONTRACT AND ESTABLISH MINIMUM REQUIREMENTS WITH WHICH THE WORK MUST COMPLY.
- L. PROPRIETARY PRODUCTS OR ASSEMBLIES UTILIZED AS "BASIS OF DESIGN".
- a. ON OCCASION, THE DRAWINGS MAY REFER TO A SINGLE PROPRIETARY PRODUCT OR ASSEMBLY WHILE THE SPECIFICATIONS LIST TWO OR MORE ACCEPTABLE MANUFACTURERS AND/OR PRODUCTS. WHEN THIS OCCURS, THE PRODUCT OR ASSEMBLY ILLUSTRATED BY THE DRAWINGS IS THE "BASIS OF DESIGN" PRODUCT OR ASSEMBLY.
- b. THE DIMENSIONS, MOUNTING HEIGHTS, CLEARANCES, AND ACCESS REQUIREMENTS OF SPECIFIED PRODUCTS AND ASSEMBLIES OTHER THAN THE "BASIS OF DESIGN" MAY VARY FROM THAT SHOWN BY THE DRAWINGS.
- c. THE CONTRACTOR MAY UTILIZE ANY OTHER SPECIFIED PRODUCT OR ASSEMBLY IN LIEU OF THE "BASIS OF DESIGN" PRODUCT OR ASSEMBLY. HOWEVER, THE CONTRACTOR IS RESPONSIBLE (AT NO ADDITIONAL EXPENSE TO THE OWNER) FOR ALL COORDINATION AND REVISIONS TO DIMENSIONS AND/OR DETAILS NECESSARY TO ACHIEVE THE SAME FUNCTIONAL AND AESTHETIC DESIGN INTENT AS ILLUSTRATED BY THE "BASIS OF DESIGN" SHOWN BY THE CONTRACT DOCUMENTS.
- M. THE CONTRACTOR SHALL NOT SCALE DRAWINGS, THE CONTRACTOR SHALL VERIFY ALL DIMENSIONS AND EXISTING CONDITIONS PRIOR TO THE START OF WORK AND SHALL NOTIFY THE OWNER'S REPRESENTATIVE OF ANY DISCREPANCIES PRIOR TO PROCEEDING WITH THE WORK.

APPLICABLE CODES AND STANDARDS

VA STANDARDS AND GUIDES:	
NCA MASTER SPECIFICATION	ARCHITECTURAL BARRIERS ACT ACCESSIBILITY STANDARDS (ABAAS), JULY 2003, AMENDED AUGUST 2005
PG-18-3 DESIGN AND CONSTRUCTION PROCEDURES, 2013	INTERNATIONAL BUILDING CODE (IBC), 2012
PG-18-4 STANDARD DETAILS AND CAD STANDARDS, 2009	NATIONAL STANDARD PLUMBING CODE, 2009
PG-18-8 SEISMIC DESIGN HANDBOOK, 2013	GREENING THE GOVERNMENT ORDERS 13123 AND 13148.
PG-18-10 DESIGN MANUALS BY DISCIPLINE, VARIOUS DATES	VENTILATION FOR ACCEPTABLE INDOOR AIR QUALITY - ASHRAE STANDARD 62.1-2013.
PG-18-12 DESIGN GUIDES - SUPPLY PROCESSING & DISTRIBUTION, 2010	SAFETY STANDARDS FOR REFRIGERATION SYSTEMS - ASHRAE STANDARD 15-2013.
PG-18-13 BARRIER FREE DESIGN GUIDE, DECEMBER 2011	ASTM E119 STANDARD TEST METHODS FOR FIRE TESTS OF BUILDING CONSTRUCTION AND MATERIALS, 2010B.
PG-18-15 VOLUME D - A/E SUBMISSION REQUIREMENTS FOR NATIONAL CEMETERY PROJECTS - DECEMBER 2011	ASTM E814 STANDARD TEST METHOD FOR FIRE TESTS OF THROUGH-PENETRATION FIRE STOPS, 2010.
APPLICABLE CODES, STANDARDS AND PUBLICATIONS:	ANSI/UL 924 STANDARD FOR EMERGENCY LIGHTING AND POWER EQUIPMENT, 2008, REVISED 2009.
NFPA 101 LIFE SAFETY CODE, 2015 EDITION	ANSI/UL 1479 STANDARD FOR FIRE TESTS OF THROUGH-PENETRATION FIRE TESTS, 2003, REVISED 2010.
NFPA 13 STANDARD FOR INSTALLATION OF SPRINKLER SYSTEMS, 2013 EDITION	UNLESS OTHERWISE SPECIFIED, SPECIFIC REFERENCES TO CODES, REGULATIONS, STANDARDS, MANUFACTURERS' INSTRUCTIONS OR REQUIREMENTS OF REGULATORY AGENCIES, SHALL MEAN THE LATEST EDITION OF EACH IN AFFECT AT THE DATE OF PROJECT SUBMISSION.
NFPA 70 NATIONAL ELECTRIC CODE, 2013 EDITION	
NFPA 72 NATIONAL FIRE ALARM AND SIGNALING CODE, 2013 EDITION	
NFPA 90A STANDARD FOR THE INSTALLATION OF AIR-CONDITIONING AND VENTILATING SYSTEMS, 2015 EDITION	
NFPA 90B STANDARD FOR THE INSTALLATION OF WARM AIR HEATING AND AIR-CONDITIONING SYSTEMS, 2015 EDITION	
NFPA 110 STANDARD FOR EMERGENCY AND STANDBY POWER SYSTEMS, 2015 EDITION	
NFPA 111 STANDARD ON STORED ELECTRICAL ENERGY EMERGENCY AND STANDBY POWER SYSTEMS, 2013 EDITION	
NFPA 220 STANDARD ON TYPES OF BUILDING CONSTRUCTION, 2015 EDITION	
NFPA 251 STANDARD METHODS OF TESTS OF FIRE RESISTANCE OF BUILDING CONSTRUCTION AND MATERIALS, 2006 EDITION	

PROJECT INFORMATION

PROJECT DESCRIPTION

PROVIDE A NEW 10,359 NICHE COLUMBARIUM WITH A COMMITAL SHELTER AND TOILET ROOM BUILDING ON A EXISTING 13.26 ACRE SITE. THE IMPROVEMENTS WILL INCLUDE A NEW SITE ACCESS ROAD WHICH TIES INTO CONSTITUTION AVE JUST SOUTH OF THE NEW SITE.

PROJECT LOCATION:

VA LOS ANGELES NATIONAL CEMETERY
990 SOUTH SEPULVEDA BLVD.
LOS ANGELES, CA 90024

THIS BUILDING IS NOT SPRINKLERED

GROSS AREAS:

748 SF (COMMITAL SHELTER)
508 SF (TOILET ROOM BUILDING)

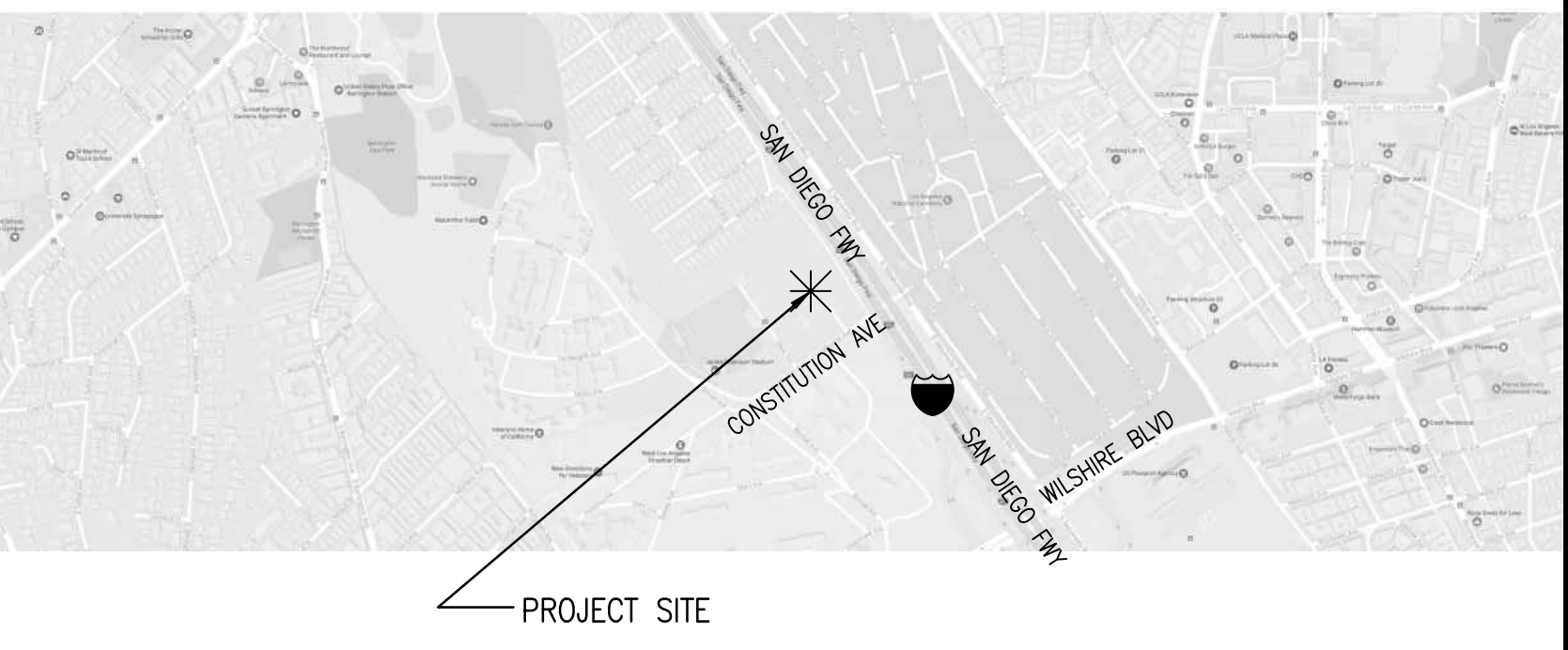
TYPE OF CONSTRUCTION:

RESTROOM TYPE 1B
COLUMBARIUM TYPE 1B

OCCUPANCY GROUP:

RESTROOM GROUP B
COLUMBARIUM GROUP B (IBC 303.1.2)

VICINITY MAP



VIEW NUMBERING MODULAR LAYOUT

VIEW NUMBERING LAYOUT

VIEWS ARE NUMBERED ACCORDING TO THEIR LOCATION ON EACH SHEET AND MAY NOT BE NUMBERED CONSECUTIVELY. EACH MODULE MAINTAINS THE NUMBER ASSOCIATED WITH IT

THIS SYSTEM CAN BE APPLIED TO ANY DRAWING THAT CONTAINS MULTIPLE IMAGES. THE IMAGES ARE NUMBERED ACCORDING TO THE MODULE SYSTEM SHOWN ILLUSTRATED TO THE LEFT

EACH VIEW MAY OCCUPY ONE OR MORE WHOLE MODULES. THE VIEW MODULE IS USED TO ESTABLISH THE IDENTIFYING LABEL FOR EACH DETAIL NOT TO LIMIT THE SIZE OF THE DETAIL

VIEW NUMBERING EXAMPLE

THE NUMBER OF THE MODULE WHICH OCCURS IN THE LOWER LEFT CORNER OF A SINGLE MODULE OR SEVERAL MODULES GROUPED TOGETHER WILL DEFINE THE FINAL VIEW NUMBER AS SHOWN IN THE ILLUSTRATION TO THE LEFT. ALTHOUGH THE MODULE NUMBERS OCCUR IN CONSECUTIVE ORDER, NOT ALL NUMBERS ARE NECESSARILY USED ON EACH SHEET

A

B

C

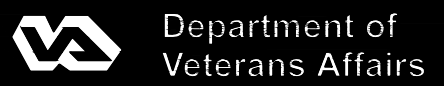
D

E

F

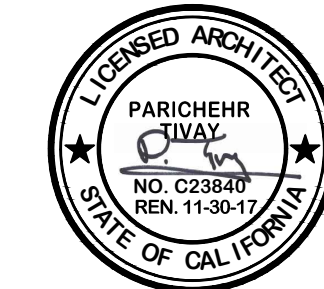
STANDARD ABBREVIATIONS

A		C (CONTD)		E (CONTD)		G (CONTD)		L (CONTD)		N (CONTD)		R (CONTD)		S (CONTD)		W (CONTD)	
A LABEL	CLASS A DOOR	CD	CONSTRUCTION DOCUMENTS OR	EFS	EXTERIOR FINISH SYSTEM	GL	GLASS			NRP	NONREMOVABLE PIN						
A/C	AIR CONDITION	CEM	CONTRACT DOCUMENTS	EIFS	EXTERIOR INSULATION FINISHING SYSTEM	GL BLK	GLASS BLOCK			NS	NARROW STILE					WR	WEATHER RESISTANT
A/C UNIT	AIR CONDITIONING UNIT	CEM	CEMENT	EJ	EXPANSION JOINT	GLU LAM	GLUED LAMINATED WOOD			NUM	NUMERAL					WS	WEATHERSTRIP
A/E	ARCHITECT/ENGINEER	CEM PLAS	CEMENT PLASTER	EL	ELEVATION	GR FL	GROUND FLOOR									WT	WEIGHT
AAMA	AMERICAN ARCHITECTURAL MANUFACTURERS ASSOCIATION	CER	CERAMIC	ELAST	ELASTOMERIC	GRAN	GRANITE	LRV	LOUVERED ROOF VENT							WWF	WELDED WIRE FABRIC
AB	ANCHOR BOLT	CF	CONTRACTOR FURNISHED	ELEC	ELECTRIC	GRTG	GRATING	LT	LIGHT								
ABC	AGGREGATE BASE COURSE	CF/C	CONTRACTOR FURNISHED / CONTRACTOR INSTALLED	ELEC DR OP	ELECTRIC DOOR OPENER	GSB	GYPSUM SHEATHING BOARD	LT GA	LIGHT GAGE	O/O	OUT TO OUT						
AC	ASBESTOS CEMENT OR ASPHALTIC CONCRETE	CG	CONTRACTOR INSTALLED	ELEV	ELEVATOR	GSM	GALVANIZED SHEET METAL	LTG	LIGHTING	O	OXYGEN						
ACI	AMERICAN CONCRETE INSTITUTE	CF/OI	CONTRACTOR FURNISHED / OWNER INSTALLED	EMER	EMERGENCY	GSU	GLAZED STRUCTURAL UNIT	LTG	LIGHTING	OA	OUTSIDE AIR OR OVERALL						
ACS DR	ACCESS DOOR	CF/G	COUNTERFLASHING	EMER SHR	EMERGENCY SHOWER	GT	GROUT	LTNG	LIGHTNING	OC	ON CENTER						
ACS FLR	ACCESS FLOOR	CFM	CUBIC FEET PER MINUTE	ENCL	ENCLOSURE	GUAR	GUARANTEE	LVD	LOUVERED	OCC	OCCUPY						
ACS PNL	ACCESS PANEL	CFMF	COLD-FORMED METAL FRAMING	ENGR	ENGINEER	GUT	GUTTER	LVR	LOUVER	OCT	OCTAGON						
ACST	ACOUSTIC	CFS	CUBIC FEET PER SECOND	ENVR	ENVIRONMENT	GYP	GYPSUM	LWC	LIGHTWEIGHT CONCRETE	OD	OUTSIDE DIAMETER / OUTSIDE DIMENSION						
ACT	ACOUSTICAL CEILING TILE	CGSFU	CERAMIC GLAZED STRUCTURAL FACING UNITS	EPA	ENVIRONMENTAL PROTECTION AGENCY	GYP BD	GYPSUM BOARD	LWIC	LIGHTWEIGHT INSULATING CONCRETE	OF/C	OWNER FURNISHED / CONTRACTOR INSTALLED						
AD	AREA DRAIN	CH BD	CHALKBOARD	EPO	EMERGENCY POWER SHUT OFF	GYP PLAS	GYPSUM PLASTER	LYR	LAYER	OFD	OVERFLOW DRAIN						
ADA	AMERICANS WITH DISABILITIES ACT	CHM	CHEMICAL	EPS	EXPANDED POLYSTYRENE BOARD (INSULATION)					OFF	OFFICE						
ADC	AUTOMATIC DOOR CLOSER	CHFR	CHAMFER	EQ	EQUAL					OH	OVERHANG						
ADDL	ADDITIONAL	CHK	CHECK	EQ SP	EQUALLY SPACED	H	HIGH	MACH	MACHINE	OH DR	OVERHEAD (COILING) DOOR						
ADDN	ADDITION	CIP	CAST-IN-PLACE	EQUIP	EQUIPMENT	H PLAM	HIGH PRESSURE PLASTIC LAMINATE	MACH RM	MACHINE ROOM	OPH	OPPOSITE HAND						
ADH	ADHESIVE	CIR	CIRCLE	EQUIV	EQUIVALENT	HB	HAZ MAT	MAN	MANUAL	OPNG	OPENING						
ADJ	ADJACENT, ADJOINING, OR ADJUSTABLE	CIRC	CIRCULAR	ERC	EXISTING ROOF DRAIN	HC	HANDICAPPED	MATL	MATERIAL	OPP	OPPOSITE						
ADMIN	ADMINISTRATION	CJ	CONSTRUCTION JOINT OR CONTROL JOINT	ESD	ESCAPE OR ESCUTCHEON	HCDW	HOLLOW CORE WOOD DOOR	MATV	MASTER ANTENNA TELEVISION SYSTEM	OPR	OPERABLE						
ADB	AUTOMATIC DOOR BOTTOM	CL	CENTER LINE	ESCAL	ESCALATOR	HDBD	HARDBOARD	MAX	MAXIMUM	OPT	OPTIONAL						
AF	ABOVE FINISHED COUNTER	CLDG	CLADDING	ESMT	EASEMENT	HDR	HARDENER	MB	MACHINE BOLT	OR	OPERATING ROOM OR OUTSIDE RADIUS						
AFB	ABOVE FINISHED FLOOR	CLG	CEILING	ESP	ESPECIALLY	HDO	HIGH DENSITY OVERLAY	MCB	METAL CORNER BEAD	ORG	ORDNANCE OR OVERFLOW ROOF DRAIN						
AFG	ABOVE FINISHED GRADE	CLG HT	CEILING HEIGHT	EST	ESTIMATE	HDR	HEADER	MCD	METAL DECK	ORIG	ORIGINAL						
AFS	ABOVE FINISHED SLAB	CLR	CLEAR	ETC	ET CETERA OR AND SO FORTH	HDW	HARDWARE	MDF	MAIN DISTRIBUTION FRAME / MEDIUM DENSITY FIBERBOARD	ORN	ORNAMENTAL						
AGA	AMERICAN GAS ASSOCIATION	cm ²	SQUARE CENTIMETER	EW	EACH WAY	HDWD	HARDWOOD			OSHA	OCCUPATIONAL SAFETY AND HEALTH ADMINISTRATION						
AGC	ASSOCIATED GENERAL CONTRACTORS	cm ³	CUBIC CENTIMETER	EWC	ELECTRIC WATER COOLER	HEPA	HIGH EFFICIENCY PARTICULATE AIR (FILTER)	ME	MEASURE								
AGGR	AGGREGATE	CM	CONSTRUCTION MANAGEMENT	EWS	EYE WASH STATION	HEX	HEXAGON	MEAS	MECHANICAL	OUT	OUTLET						
AHJ	AUTHORITY HAVING JURISDICTION	CMU	CONCRETE MASONRY UNIT	EXH	EXHAUST	HFG	HIGH FREQUENCY	MECH	MECHANICAL ROOM	OZ	OUNCE						
AHR	ANCHOR	CNR	CORNER	EXIST	EXISTING	HGR	HANGER	MEK	METHYL ETHTYL KETONE								
AHU	AIR HANDLING UNIT	CNTR	COUNTER	EXP	EXPANSION OR EXPOSED	HM	HECTOMETER	MEL	MELAMINE								
AIA	AMERICAN INSTITUTE OF ARCHITECTS	CO	CARBON MONOXIDE, CERTIFICATE OF OCCUPANCY, CLEANOUT, OR COMPANY CONSTRUCTION	EXP BT	EXPANSION BOLT	HM	HOLLOW METAL	MEMB	MEMBRANE	PAR	PARALLEL OR PARAPET						
AISC	AMERICAN INSTITUTE OF STEEL CONSTRUCTION	CO2	CARBON DIOXIDE	EXT	EXISTING GRADE	HMD	HOLLOW METAL DOOR	MEMO	MEMORANDUM	PARA	PARAGRAPH						
ALT	ALTERNATE	COL	COLUMN	EXT GR	EXTERIOR, EXTERNAL, OR EXTINGUISHER	HMDF	HOLLOW METAL DOOR AND FRAME	MEZZ	MEZZANINE	PART	PARTIAL						
ALT NO	ALTERNATE NUMBER	COM	COMMON			HMDRL	HANDRAL	MF	MILL FINISH	PAT	PATTERN						
ALUM	ALUMINUM	COMB	COMBINATION, COMBINED			HO	HOLD OPEN	MFG	MANUFACTURING	PB	PUSHBUTTON						
AMP	AMPERE	COMM	COMMUNICATION			HORIZ	HORIZONTAL	MFR	MANUFACTURER	PBD	PARTICLEBOARD						
AMT	AMOUNT	COMP	COMPONENT			HOSP	HOSPITAL	MFR REC	MANUFACTURER'S RECOMMENDATION	PC	PIECE, POLYCARBONATE OR PORTLAND CEMENT						
ANOD	ANODIZE	CONC	CONCRETE			HP	HIGH PRESSURE OR HORSEPOWER	MGT	MANAGEMENT	PCA	PORTLAND CEMENT ASSOCIATION						
ANSI	AMERICAN NATIONAL STANDARDS INSTITUTE	CONC FLR	CONCRETE FLOOR			HQ	HEADQUARTERS	MH	MAN-HOLE	PCC	PRECAST CONCRETE						
ANT	ANTENNA	COND	CONDENSER OR CONDITION			HS	HEAT-STRENGTHENED (GLASS) / HIGH STRENGTH	MIC	MICROPHONE	PCCP	CONCRETE PAVEMENT						
APA	AMERICAN PLYWOOD ASSOCIATION	CONF	CONFERENCE			FAS	FASCIA	HSE	HOUSE	PCD	PAPER CUP DISPENSER						
APPD	APPROVED	CONN	CONNECT			FAS BD	FASCIA BOARD	HSKP	HOUSEKEEPING	PCF	POUNDS PER CUBIC FOOT						
APPROX	APPROXIMATE	CONSTR	CONSTRUCTION			FCO	FLOOR CLEANOUTS	HST	HOSPITAL	PCP	PORTLAND CEMENT PLASTER						
APT	APARTMENT	CONT	CONTINUOUS			FCY	FACTORY	HT	HEIGHT	PD	PEDESTAL						
AR	AS REQUIRED	CONTR	CONTRACTOR			FD	FLOOR DRAIN	HVAC	HEATING, VENTILATING, AND AIR CONDITIONING	PEN	PENETRATE						
ARCH	ARCHITECT	COORD	COORDINATE			FDC	FIRE DEPARTMENT CONNECTION	MISC	MISCELLANEOUS	PEND	PENDANT						
ASB	ASBESTOS	CORR	CORRIDOR			FDTN	FOUNDATION	MIT	MITER	PERF	PERFORATED						
ASI	ARCHITECTS'S SUPPLEMENTAL INSTRUCTION	CPM	CRITICAL PATH METHOD			FE	FIRE EXTINGUISHER	MKR	MARKER	PERIM	PERIMETER						
ASKLR	AUTOMATIC SPRINKLER	CPRS	COMPRESSIBLE			FEC	FIRE EXTINGUISHER CABINET	ML	METAL LATH	PERP	PERPENDICULAR						
ASPH	ASPHALT	CPT	CARPET			FF	FINISH FACE	MLDG	MOLDING (MOLDING)	PERP	PERPENDICULAR						
ASSN	ASSOCIATION	CRS	COLD ROLLED STEEL			FF EL	FINISH FLOOR ELEVATION	MLWK	MILLWORK	PGBD	PEGBOARD						
ASTM	AMERICAN SOCIETY FOR TESTING AND MATERIALS	CRSBE	CONCRETE REINFORCING STEEL INSTITUTE			FFBE	FURNITURE, FIXTURE, AND EQUIPMENT	mm	MILLIMETER	SCH	SCHOOL						
ATCH	ATTACHMENT	CSG	CONCRETE SPLASH BLOCK			FH	FLAT HEAD OR FLAT HEAD SCREWS	MO	MASONRY OPENING OR MOTOR OPERATED MODEL, MODIFY OR MODULE	SCHD	SCHEDULE						
ATM	AUTOMATIC TELLER MACHINE	CSG	CASING			FHC	FIRE HOSE CABINET	MOD	MODIFIED BITUMEN	UL	UNDERGROUND						
ATS	AUTOMATIC TRANSFER SWITCH	CSI	CONSTRUCTION SPECIFICATIONS INSTITUTE			FHMS	FLAT HEAD MACHINE SCREW	MOD BIT	MODIFIED BITUMEN	SCN	SCREEN						
AUTO	AUTOMATIC	CSK	COUNTER SUNK			FHWS	FULL HEIGHT PARTITION	MON	MONITOR	PL	PROPERTY LINE						
AUX	AUXILIARY	CSMT	CASEMENT			FIG	FIGURE	MOPR	MOP RACK	PL GL	PLATE GLASS						
AV	AUDIO VISUAL	CSWK	CASEWORK			FIL	FILLET	MR	MOISTURE RESISTANT	PLAM	PLASTIC LAMINATE						
AVE	AVENUE	CT	CERAMIC TILE			FIN	FINISH	MS	MACHINE SCREW OR MOP SINK	PLAS	PLASTER OR PLASTIC						
AVG	AVERAGE	CTB	CERAMIC TILE BASE			FIN FLR	FINISH FLOOR	MTD	MOUNTED	PLBG	PLUMBING						
AW	ACID WASTE	CTF	CERAMIC TILE FLOOR			ID NO	IDENTIFICATION NUMBER	MTG	MOUNTING	PLYWD	PLYWOOD						
AWI	ARCHITECTURAL WOODWORKING INSTITUTE	CTG	COATING			ILLUM	ILLUMINATION	MTL	METAL	PMTL	PAINTED METAL						
AWPA	AMERICAN WOOD PRESERVERS' ASSOCIATION	CTR	CENTER CONTOUR			INCL	INCLUDED	MULL	MULLION	PNEU	PNEUMATIC						
AWS	AMERICAN WELDING SOCIETY	CTRL	CONTROL			IND	INDEPENDENT OR INDUSTRIAL	MW	MICROWAVE	PNL	PANEL						
AWT	ACOUSTICAL WALL TREATMENT	CTV	CABLE TELEVISION			INF	INFORMATION	PO	POST OFFICE / PURCHASE ORDER	PSF	POUNDS PER SQUARE FOOT						
		CU	COPPER			INSUL	INSULATION	POLY	POLYETHYLENE (PLASTIC)	PR	PAIR						
		CU FT	CUBIC FEET			INT	INTERIOR	PRCST	PRECAST	PREFAB	PREFABRICATE						
		CU IN	CUBIC INCH			INTERCOM	INTERCOMMUNICATION	PREFIN	PREFINISH	SHR HD	SHOWER HEAD						
		CU YD	CUBIC YARD			INTL	INTERNATIONAL	PRELIM	PRELIMINARY	SHRD	SHOWER DRAIN						
		CURT	CURTAIN			IRMA	INVERTED ROOF MEMBRANE ASSEMBLY	PREP	PREPARATION	SHT	SHEET						
		CYL	CYLINDER			ISIA	INTERNATIONAL SYMBOL OF ACCESSIBILITY	PRESS	PRESSURE	SHTHG	SHEATHING						
		CYL L	CYLINDER LOCK			INH	INSTANTANEOUS WATER HEATER	PREV	PREVIOUS	SHV	SHELVING						
								PRKG	PARKING	SIM	SIMILAR						
								PRMLD	PREMOLDED	SJ	SCORED JOINT						
								PROJ	PROJECT	SJI	STEEL JOIST INSTITUTE						
								PROP	PROPERTY	SK	SKETCH						
								PSF	POUNDS PER SQUARE FOOT	SKLT	SKYLIGHT						
								NEG	NEGATIVE	SLD WDW	HORIZONTAL SLIDING WINDOW						
								NEMA	NATIONAL ELECTRICAL MANUFACTURERS ASSOCIATION	SLDG	SLIDING						
								NEUT	NEUTRAL	SLNT	SEALANT						
								NFC	NATIONAL FIRE CODE	SM	SHEET METAL						
								NFPA	NATIONAL FIRE PROTECTION ASSOCIATION	SMK	SMOKE						
										SND	SANITARY NAPKIN DISPENSER						
										SND INS	SOUND INSULATION						
										SNDU	SANITARY NAPKIN DISPOSAL UNIT						
										SPEC	SPECIFICATION						
										SPKLR	SPEAKER						
										SPKR	SPEAKER						
										SPLY	SUPPLY						
										SQ	SQUARE						
										SQ IN	SQUARE INCH						
										SQ YD	SQUARE YARD						
										SS	SANITARY SEWER OR SERVICE SINK						
										SST	STAINLESS STEEL						
										ST	STAIRS OR STREET						
										STC	SOUND TRANSMISSION CLASS STANDARD						
										STF	STIFFENER						
										STL JST	STEEL JOIST						
										STL LNTL	STEEL LINTEL						
										STL PL	STEEL PLATE						
										STL RF DK	STEEL ROOF DECK						
										STL TB	STEEL TUBE						
										STL TR	STEEL TRUSS						
										STNLS	STAINLESS						
										STOR	STORAGE						
										STR	STRINGERS						
										STRUCT	STRUCTURAL						
										STRUCT STL	STRUCTURAL STEEL						

[illegible]

CONSULTANTS:

	Seals and Signatures
--	-------------------------



ARCHITECT/ENGINEERS:

LEO A DALY
550 South Hope Street, 27th Floor
Los Angeles, California 90071, USA
213-629-0100 F213-629-0070

PLANNING
ARCHITECTURE
ENGINEERING
INTERIORS



EST. 1915

Drawing Title	<p>ACCESSIBILITY NOTES AND DIAGRAMS</p>
---------------	---

Approved: Project Director

Project Title
COLUMBARIUM EXPANSION
PHASE 1B

PHASE 1B	
Location	LOS ANGELES NATIONAL CEMETERY

290 CONSTITUTION AVENUE LOS ANGELES, CA 90049		
Date 01/20/2017	Checked R T	Drawn W J

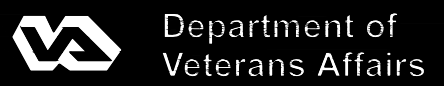
VA Project Number
898CM2032

Project Number
046-10073-002

Drawing Number

X5

Office of
Construction
and Facilities
Management



A
B
C
D
E
F

three inches = one foot
one and one half inches = one foot
one inch = one foot
three quarters inch = one foot
one half inch = one foot
three eighths inch = one foot
one quarter inch = one foot
one eighth inch = one foot

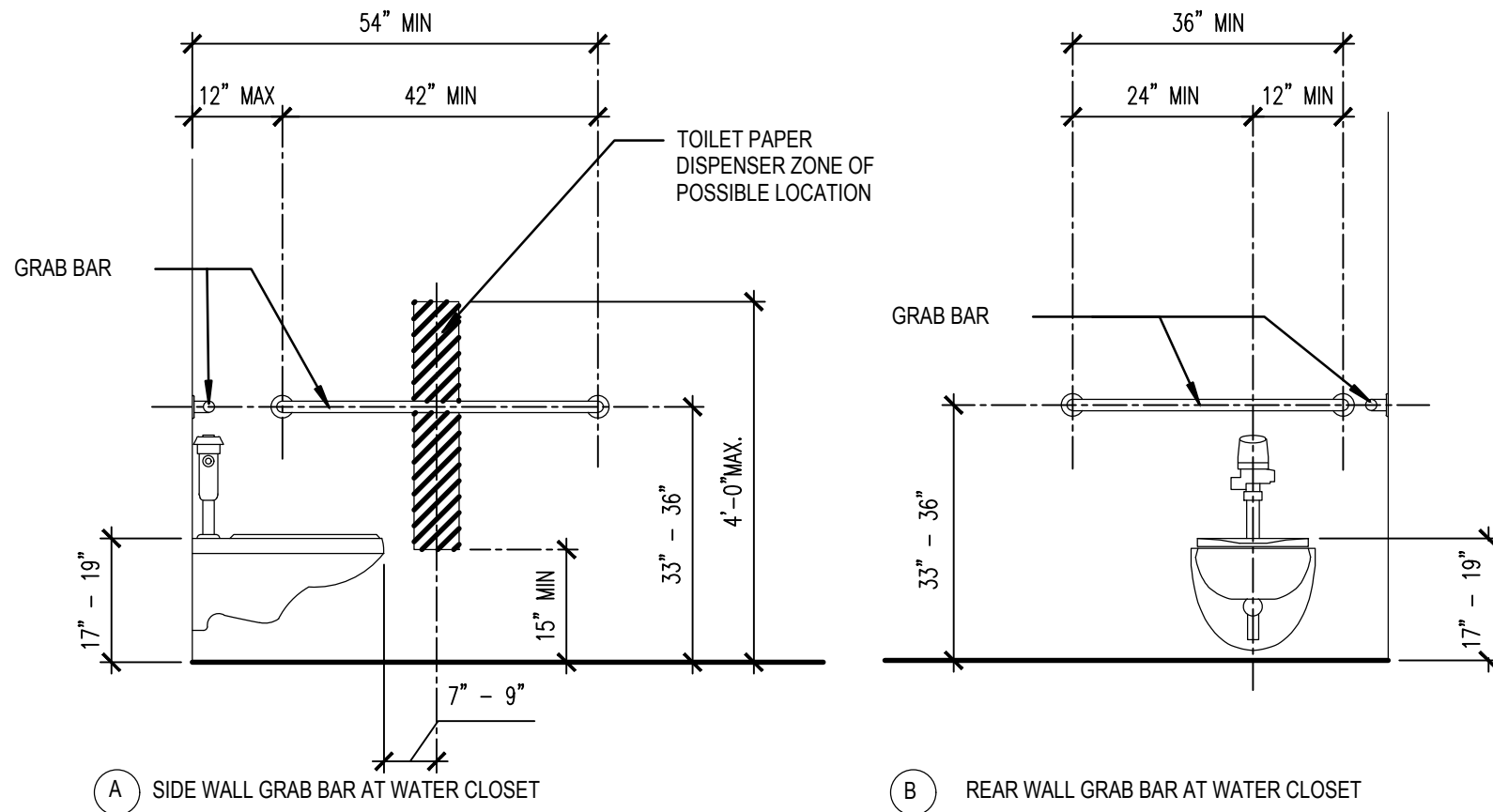
1-27-17 10:22:51 AM w:\ee
DIAGRAMS.dwg

F1 ACCESSIBLE SINK / LAVATORY CLEARANCE
SCALE: 1/2" = 1'-0"

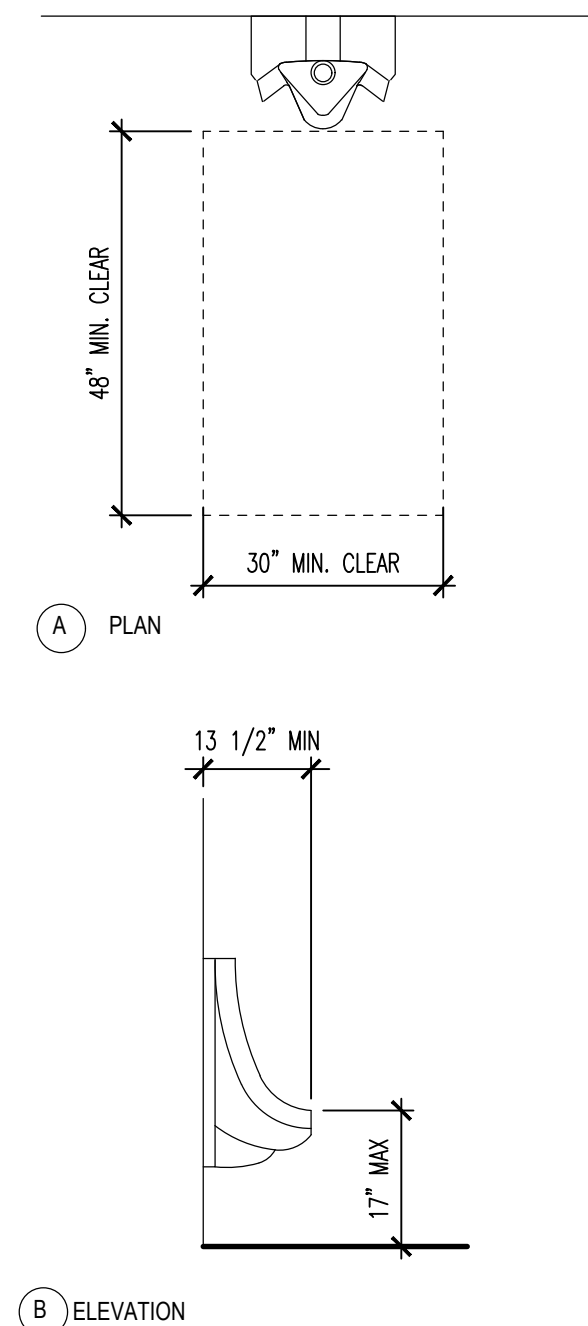
No.	Description	Date

CONSULTANTS:

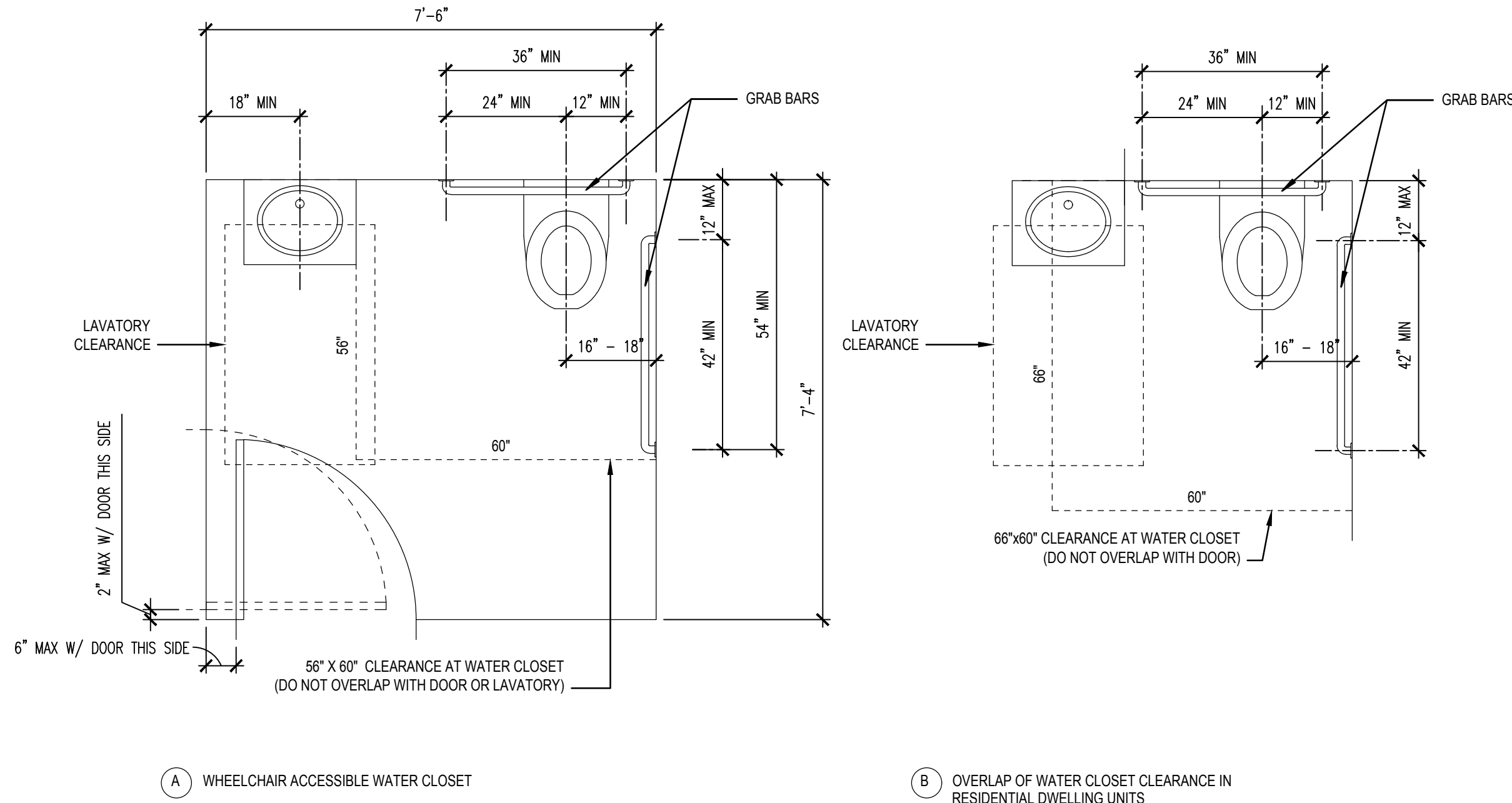
F2 GRAB BAR, ACCESSIBLE WATER CLOSET AND DISPENSER
SCALE: 1/2" = 1'-0"



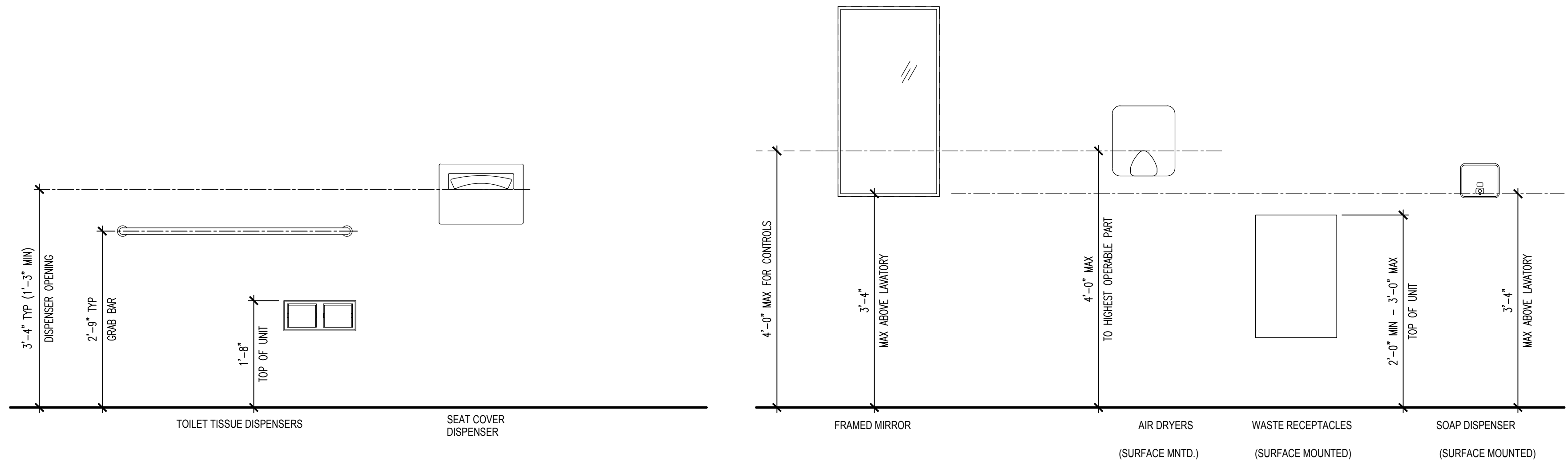
F5 ACCESSIBLE URINAL
SCALE: 1/2" = 1'-0"



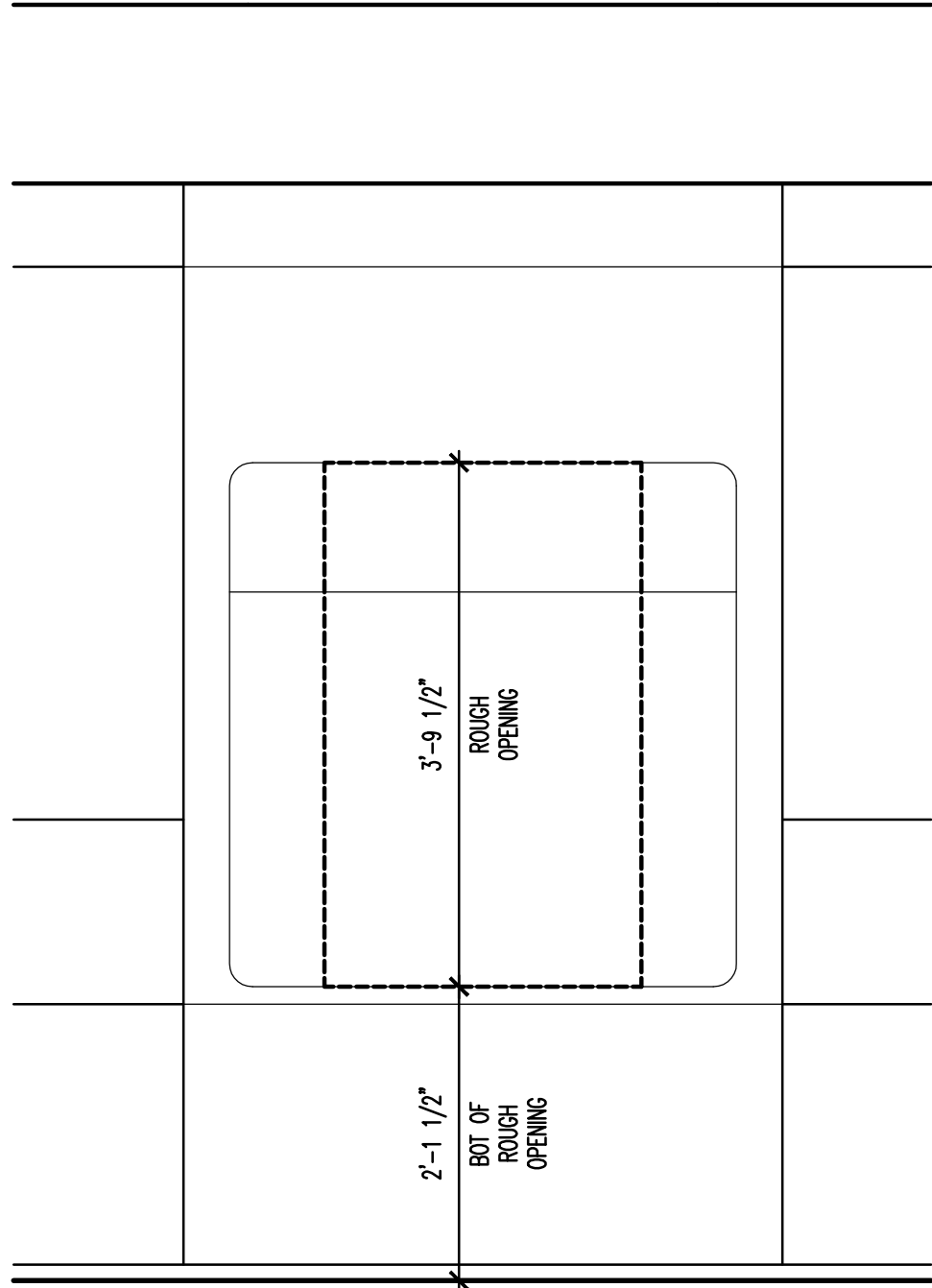
F6 ACCESSIBLE WATER CLOSET
SCALE: 1/2" = 1'-0"



B4 TYPICAL ACCESSORY MOUNTING HEIGHTS
SCALE: 3/4" = 1'-0"

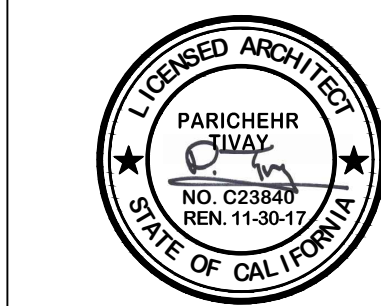


D7 GRAVESITE LOCATOR
SCALE: 3/4" = 1'-0"



SHEET NOTES

- IT IS THE INTENT OF THE DESIGN THAT ALL ITEMS SHOWN MOUNTED AT TYPICAL HEIGHTS BE ACCESSIBLE TO PERSONS WITH DISABILITIES, UNLESS NOTED OTHERWISE.
- THE PURPOSE OF THIS SHEET IS TO ILLUSTRATE TYPICAL MOUNTING HEIGHTS AND, WHERE APPLICABLE, TYPICAL MINIMUM OR MAXIMUM CLEARANCES AND/OR TYPICAL MOUNTING CONFIGURATIONS FOR A VARIETY OF ITEMS. ATTENTION: THIS SHEET MAY ILLUSTRATE ITEMS OR CONFIGURATIONS WHICH DO NOT OCCUR AS PART OF THE WORK OF THIS PROJECT. REFER TO PLANS, ELEVATIONS, SECTIONS, DETAILS AND SCHEDULES TO DETERMINE WHICH ITEMS AND CONFIGURATIONS APPLY TO THE WORK OF THIS PROJECT.
- THE HEIGHTS, CLEARANCES, AND CONFIGURATIONS SHOWN ON THIS SHEET ARE TYPICAL AND SHALL APPLY TO ALL INSTANCES OF THE ITEM (OR GROUP OF ITEMS) SHOWN UNLESS OTHERWISE NOTED OR DIMENSIONED OTHERWISE. THE TYPICAL DIMENSIONS SHOWN ON THIS SHEET TAKE PRECEDENCE OVER TYPICAL DIMENSIONS SHOWN ON THE ELECTRICAL OR MECHANICAL DRAWINGS FOR THE MOUNTING OF ITEMS INSTALLED BY THE ELECTRICAL OR MECHANICAL TRADES.
- SPECIAL OR NON-TYPICAL MOUNTING HEIGHTS OCCUR ONLY WHERE INDICATED BY ANNOTATED SYMBOLS, BY KEYED NOTES, BY NOTES ON PLANS, ELEVATIONS OR DETAILS, OR BY UNIQUE DIMENSIONS ON ELEVATIONS OR DETAILS.
- FOR ADDITIONAL INFORMATION REGARDING THE PRECEDENCE OF DRAWINGS FOR DETERMINING THE EXACT LOCATION OF EACH EXPOSED PART OF THE WORK, REFER TO THE "ARCHITECTURAL GENERAL NOTES".
- TYPICAL MOUNTING HEIGHTS FOR ADDITIONAL ITEMS OR GROUPINGS NOT SHOWN ON THIS SHEET MAY BE ILLUSTRATED BY OTHER SHEETS, REFER TO THE INDEX OF DRAWINGS FOR ADDITIONAL INFORMATION.
- MOUNTING CONFIGURATION DIAGRAMS ARE ELEVATIONS WHICH ILLUSTRATE TYPICAL RULES GOVERNING THE RELATIONSHIPS BETWEEN, AND PLACEMENT OF, ITEMS WHICH OCCUR IN GROUPS OF RELATED ITEMS (SUCH AS TOILET ACCESSORIES) OR IN CLOSE PROXIMITY TO OTHER PARTS OF THE WORK (SUCH AS SWITCHES AND DOOR FRAMES). UNLESS OTHER MOUNTING CONFIGURATIONS ARE SPECIFICALLY NOTED, DIMENSIONED, OR ELEVATED BY THESE DRAWINGS, THE TYPICAL RELATIONSHIPS, ARRANGEMENTS, AND DIMENSIONS SHOWN BY THE TYPICAL CONFIGURATION DIAGRAMS APPLY THROUGHOUT THE WORK OF THIS PROJECT.
- MOUNTING HEIGHTS, DIMENSIONS, CLEARANCES, AND ACCESS REQUIREMENTS FOR TOILET ACCESSORIES SHOWN ON THIS SHEET ARE BASED UPON SPECIFIC MANUFACTURERS AND MODELS AS INDICATED BY THE SPECIFICATIONS. WHEN SIMILAR ACCESSORIES OF OTHER SPECIFIED AND ACCEPTABLE MANUFACTURERS (IF ANY) ARE UTILIZED, MOUNTING HEIGHTS, DIMENSIONS, CLEARANCES, AND ACCESS REQUIREMENTS OF THE SIMILAR MAY VARY FROM THOSE SHOWN. WHEN SIMILAR ACCESSORIES ARE UTILIZED, THE CONTRACTOR SHALL BE RESPONSIBLE FOR ALL COORDINATION REQUIRED TO ACHIEVE THE SAME AESTHETIC AND FUNCTIONAL DESIGN INTENT ILLUSTRATED BY THAT SHOWN ON THE DRAWINGS.



ARCHITECT/ENGINEERS:

LEO A DAILY

550 South Hope Street, 27th Floor
Los Angeles, California 90071, USA
213-629-0100 F213-629-0070

PLANNING
ARCHITECTURE
ENGINEERING
INTERIORS

EST. 1915

Drawing Title

ACCESSIBILITY
DIAGRAMS

Approved Project Director

Project Title

COLUMBARIUM EXPANSION
PHASE 1B

Location

LOS ANGELES NATIONAL CEMETERY
590 CONSTITUTION AVENUE
LOS ANGELES, CA 90049

Date

01/30/2017

Checked

P.T.

Drawn

W.L.

VA Project Number

898CM2032

Project Number

046-10073-002

Drawing Number

X6

Dwg. 6 of 181

Office of
Construction
and Facilities
Management

