

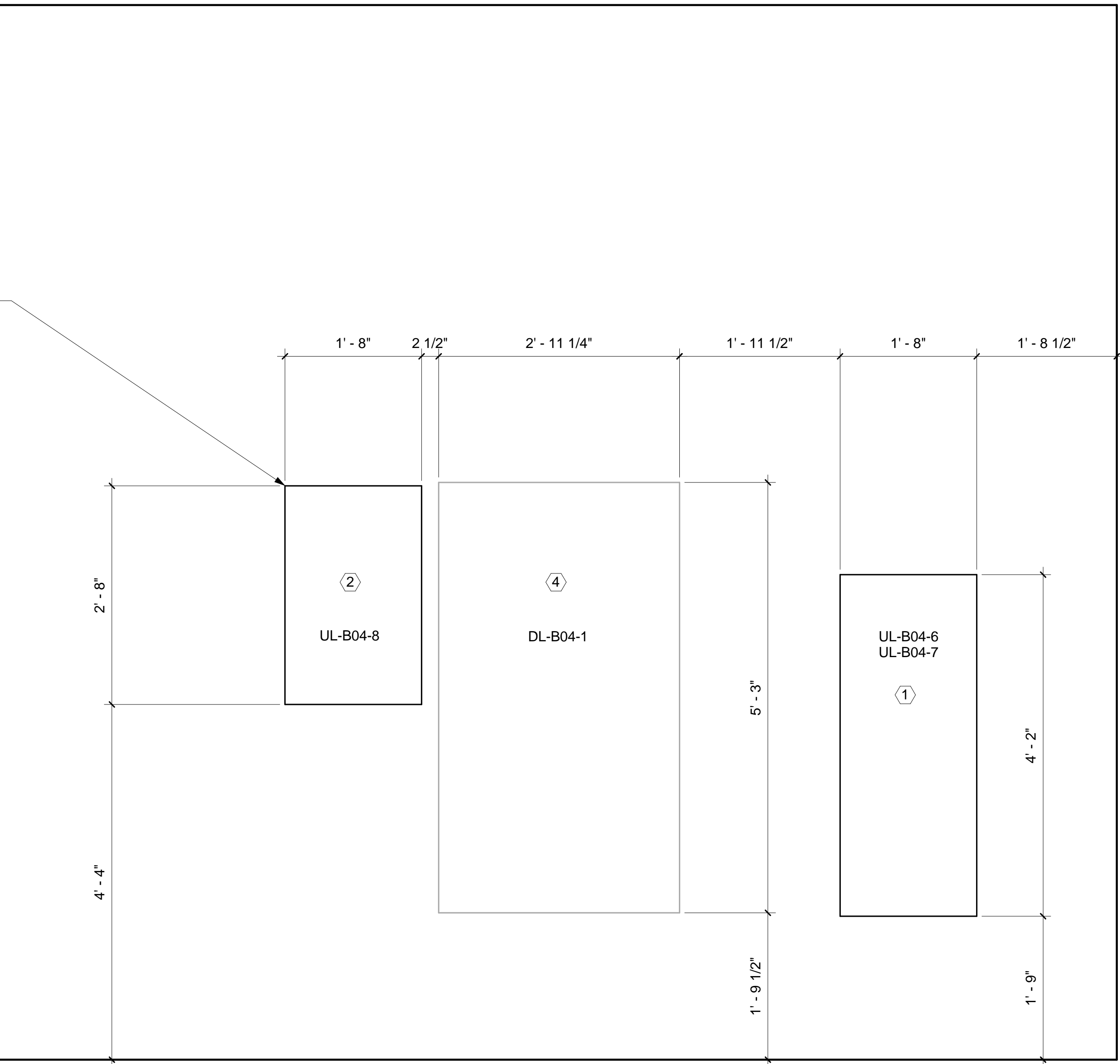
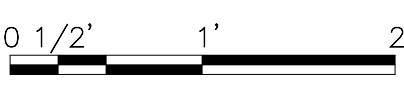
one eighth inch = one foot
one quarter inch = one foot
three eighths inch = one foot
one half inch = one foot
three quarters inch = one foot
one inch = one foot
one and one half inches = one foot
two inches = one foot
three inches = one foot

C:\Users\aghighi\Documents\B0450\B0450 BASEMENT LEVEL - ELECTRICAL - Central_Algangr1.html

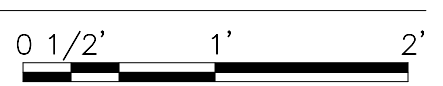
VA FORM 08-6231



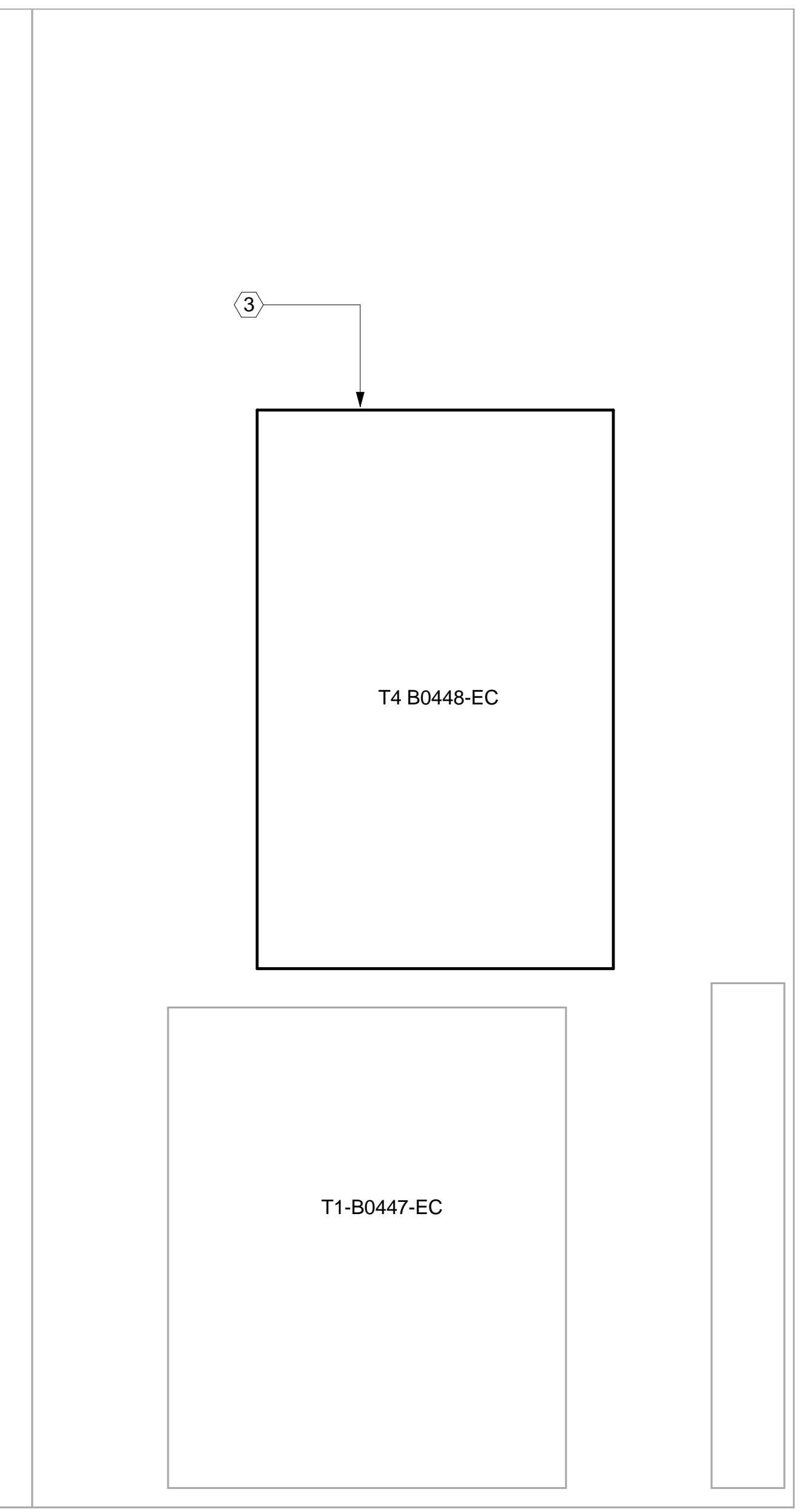
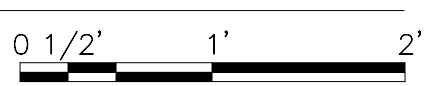
1 BASEMENT LEVEL - B0446 EC, B0448 EC, B0450 EC - CONSTRUCTION PLAN
1" = 1'-0"



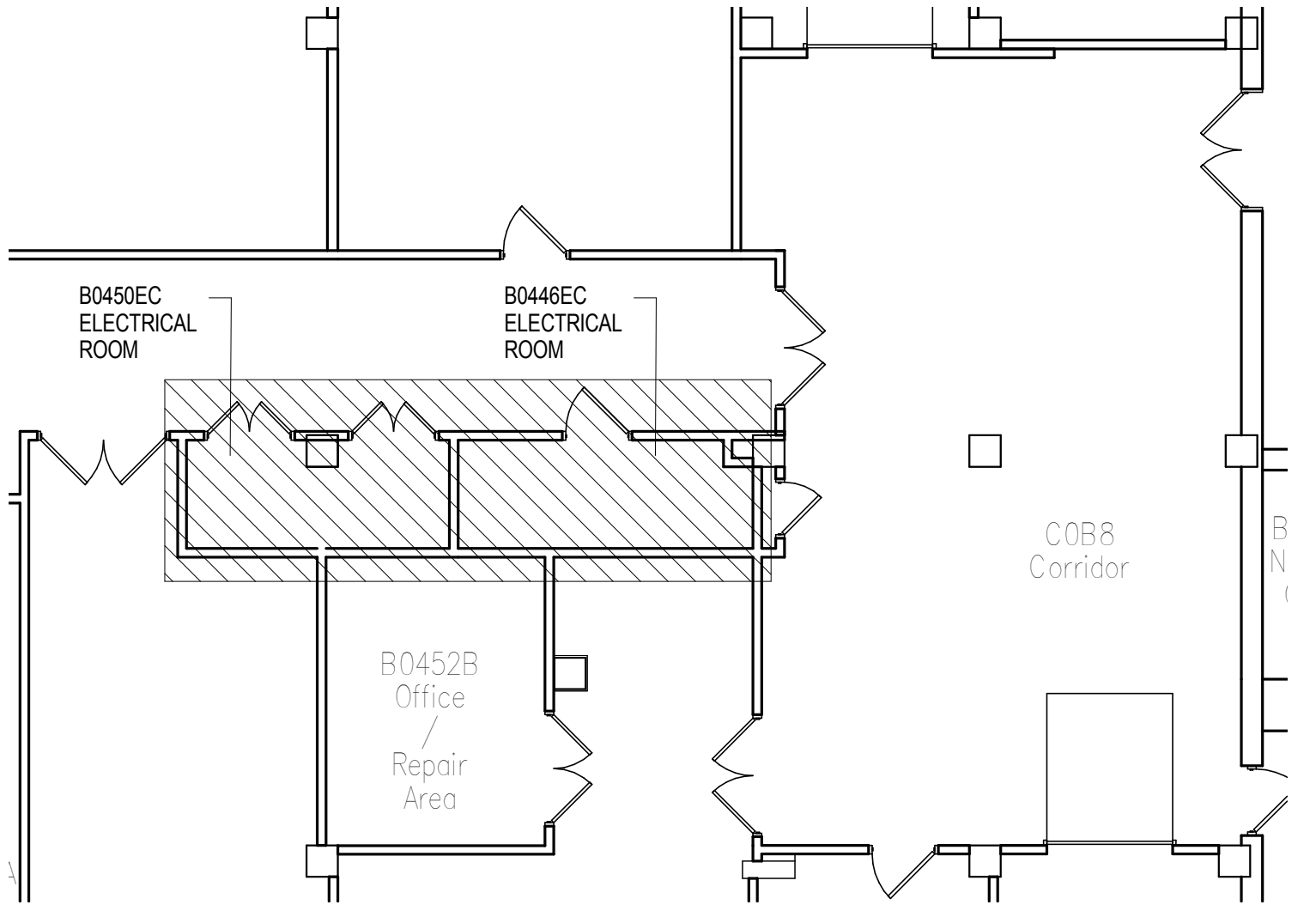
A B0450 EC - CONSTRUCTION ELEVATION A
1" = 1'-0"



B B0446 EC - CONSTRUCTION ELEVATION B
1" = 1'-0"



2 KEY PLAN B0446 EC
NOT TO SCALE



B0450 EC B0446 EC

VA CONTRACT NO. VA69D-15-J-1908

Revisions:	Date
FINAL CONSTRUCTION DOCUMENT BID SET	01/13/2017
95% CONSTRUCTION DOCUMENT SUBMITTAL	10/13/2016
65% CONSTRUCTION DOCUMENT SUBMITTAL	08/02/2016
35% SCHEMATIC DESIGN SUBMITTAL	04/28/2016

CONSULTANTS:

ARCHITECT/ENGINEERS:

Bancroft

BANCROFT ARCHITECTS + ENGINEERS
www.bancroft-ae.com

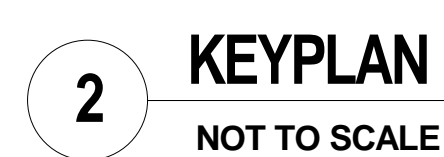
700 Nicholas Blvd. Suite 300
Eik Grove Village, IL 60007
T: 847.952.9362 F: 847.952.9403
Bancroft AE No. 14-101

Drawing Title	ROOM B0446 EC - ELECTRICAL CONSTRUCTION PLAN
Approved: Project Director	- - VAPAHCS PLANNING AND ENGINEERING

Project Title		UPGRADE W PANELS	
Location			
5000 W. NATIONAL AVE.			
MILWAUKEE, WI 53295			
Date	Checked	Drawn	
01/13/2017	LF	AG	AB EM

Office of Construction and Facilities Management

Department of Veterans Affairs



Department of

one eighth inch = one foot
one quarter inch = one foot
one half inch = one foot
three eighths inch = one foot
one inch = one foot
one and one half inches = one foot
two inches = one foot
three inches = one foot
four inches = one foot
five inches = one foot
six inches = one foot
seven inches = one foot
eight inches = one foot
nine inches = one foot
ten inches = one foot
eleven inches = one foot
twelve inches = one foot
thirteen inches = one foot
fourteen inches = one foot
fifteen inches = one foot
sixteen inches = one foot
seventeen inches = one foot
eighteen inches = one foot
nineteen inches = one foot
twenty inches = one foot
twenty one inches = one foot
twenty two inches = one foot
twenty three inches = one foot
twenty four inches = one foot
twenty five inches = one foot
twenty six inches = one foot
twenty seven inches = one foot
twenty eight inches = one foot
twenty nine inches = one foot
thirty inches = one foot
thirty one inches = one foot
thirty two inches = one foot
thirty three inches = one foot
thirty four inches = one foot
thirty five inches = one foot
thirty six inches = one foot
thirty seven inches = one foot
thirty eight inches = one foot
thirty nine inches = one foot
forty inches = one foot
forty one inches = one foot
forty two inches = one foot
forty three inches = one foot
forty four inches = one foot
forty five inches = one foot
forty six inches = one foot
forty seven inches = one foot
forty eight inches = one foot
forty nine inches = one foot
fifty inches = one foot
fifty one inches = one foot
fifty two inches = one foot
fifty three inches = one foot
fifty four inches = one foot
fifty five inches = one foot
fifty six inches = one foot
fifty seven inches = one foot
fifty eight inches = one foot
fifty nine inches = one foot
sixty inches = one foot
sixty one inches = one foot
sixty two inches = one foot
sixty three inches = one foot
sixty four inches = one foot
sixty five inches = one foot
sixty six inches = one foot
sixty seven inches = one foot
sixty eight inches = one foot
sixty nine inches = one foot
seventy inches = one foot
seventy one inches = one foot
seventy two inches = one foot
seventy three inches = one foot
seventy four inches = one foot
seventy five inches = one foot
seventy six inches = one foot
seventy seven inches = one foot
seventy eight inches = one foot
seventy nine inches = one foot
eighty inches = one foot
eighty one inches = one foot
eighty two inches = one foot
eighty three inches = one foot
eighty four inches = one foot
eighty five inches = one foot
eighty six inches = one foot
eighty seven inches = one foot
eighty eight inches = one foot
eighty nine inches = one foot
ninety inches = one foot
ninety one inches = one foot
ninety two inches = one foot
ninety three inches = one foot
ninety four inches = one foot
ninety five inches = one foot
ninety six inches = one foot
ninety seven inches = one foot
ninety eight inches = one foot
ninety nine inches = one foot
one hundred inches = one foot

5/3/2017 1:52:42 PM



1

BASEMENT LEVEL - SWITCHGEAR ROOM B0255A - CONSTRUCTION PLAN

1/4" = 1'-0"

0 2' 4' 8'

	VENT	VENT	VENT	VENT	VENT	VENT	VENT
A	PROVISIONS 1600AF	PROVISIONS 1600AF	PROVISIONS 1600AF	PROVISIONS 1600AF	PROVISIONS 1600AF	PROVISIONS 1600AF	PROVISIONS 1600AF
B	EDH-204-CR-5 (EDH-27-CR-5) (EDH-5) 1600AF 1600AT	EDH-204-CR-5 (EDH-27-CR-5) (EDH-5) 1600AF 1600AT	TIE 2000AF 2000AT	MAIN 2000A	2000AF 1200AT	TIE 2000AF 1200AT	MAIN 2000A
C	PORTABLE GENERATOR CONNECTION	PORTABLE GENERATOR CONNECTION	TEMP/EM 1600AF 800AT	EPH-CR-B02-1 (CARDIAC CATH) 1600AF 800AT	ATS-2CR 2000AF 2000AT	ATS-2CR 2000AF 2000AT	DH-B01-1 (DH-A) 1600AF 1600AT
D	PORTABLE GENERATOR CONNECTION	PORTABLE GENERATOR CONNECTION	PROVISIONS 1600AF	EDH-212-CR-2 (EDH-22-CR-2) (EDH-2) 1600AF 1000AT	TEMP/N 1600AF 800AT	TEMP/N 1600AF 800AT	PROVISIONS 1600AF
	22	22	22	22	22	22	22

CRITICAL

FRONT VIEW

NORMAL

2

EXISTING SWITCHGEAR - SG-2N & SG-2CR FRONT ELEVATION

NOT TO SCALE

VA CONTRACT NO. VA69D-15-J-1908

FINAL CONSTRUCTION DOCUMENT BID SET	01/13/2017
95% CONSTRUCTION DOCUMENT SUBMITTAL	10/13/2016
65% CONSTRUCTION DOCUMENT SUBMITTAL	08/02/2016
35% SCHEMATIC DESIGN SUBMITTAL	04/28/2016
Revisions:	Date

CONSULTANTS:

3

EXISTING SWITCHGEAR - SG-3EQ & SG-3N FRONT ELEVATION

NOT TO SCALE

	VENT	VENT	VENT		VENT	VENT
A	PROVISIONS 1600AF	PROVISIONS 1600AF	PROVISIONS 1600AF	FUTURE CUBICLE	PROVISIONS 1600AF	PROVISIONS 1600AF
B	EDH-304-Q-3 (EDH-32-Q-3) (EDH-3) 1600AF 1600AT	TIE 2000AF 2000AT	MAIN 2000A		TIE 2000AF 1200AT	MAIN 2000A
C	EDH-307-Q-4 (EDH-16-LS-4) (EDH-4) 1600AF 1600AT	PORTABLE GENERATOR CONNECTION	EPH-Q-B06-1 (EP-2) 1600AF 1000AT		ATS-3EQ 2000AF 2000AT	PROVISIONS 1600AF
D	PROVISIONS 1600AF	PORTABLE GENERATOR CONNECTION	PROVISIONS 1600AF		DH-B02-1 (DH-B2) 1600AF 1000AT	PROVISIONS 1600AF
	22	22	22	22	22	22

CRITICAL

FRONT VIEW

NORMAL

GENERAL NOTES

- REFER TO ARCHITECTURAL CONSTRUCTION DRAWINGS FOR ADDITIONAL INFORMATION.
- REFER TO DRAWING E-704 FOR NEW TRANSFORMER SCHEDULE AND RELATED WORK.
- REFER TO SPECIFICATION, VOLUME 2, APPENDIX A - PHOTO DOCUMENTATION - EXISTING DISTRIBUTION PANELBOARDS.
- REFER TO SPECIFICATION, VOLUME 2, APPENDIX B - PHOTO DOCUMENTATION - EXISTING ELECTRICAL CLOSETS.
- REFER TO SPECIFICATION, VOLUME 2, APPENDIX C - NEW PANELBOARD SCHEDULES.

(X)

ELECTRICAL KEYED NOTES

REFER TO DRAWINGS
ED-102, E-102 AND
E-102A FOR FLOOR
PLANS AND RELATED
WORK

REFER TO DRAWINGS
ED-101 AND E-101 FOR
FLOOR PLANS AND
RELATED WORK



4

KEY PLAN B0255A

NOT TO SCALE

B0255A

Drawing Title
ROOM B0255A - SWITCHBOARD ROOM
CONSTRUCTION PLAN

Approved: Project Director
-
VAPAHCS PLANNING AND ENGINEERING

Project Title
UPGRADE W PANELS

Location
5000 W. NATIONAL AVE.
MILWAUKEE, WI 53295

Date
01/13/2017

Checked
LF

Drawn
AG AB EM

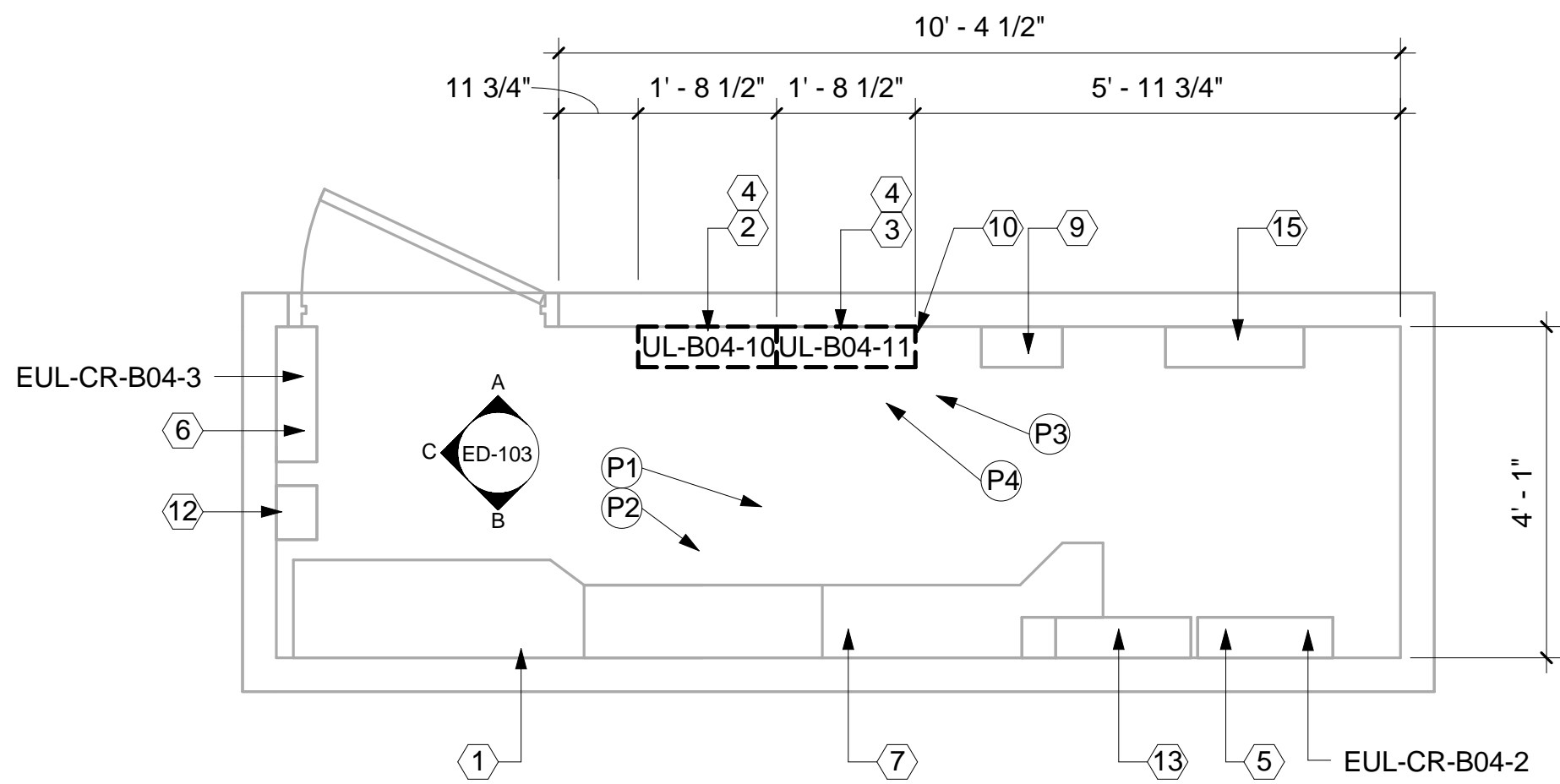
Project Number
695-16-108

Building Number
111

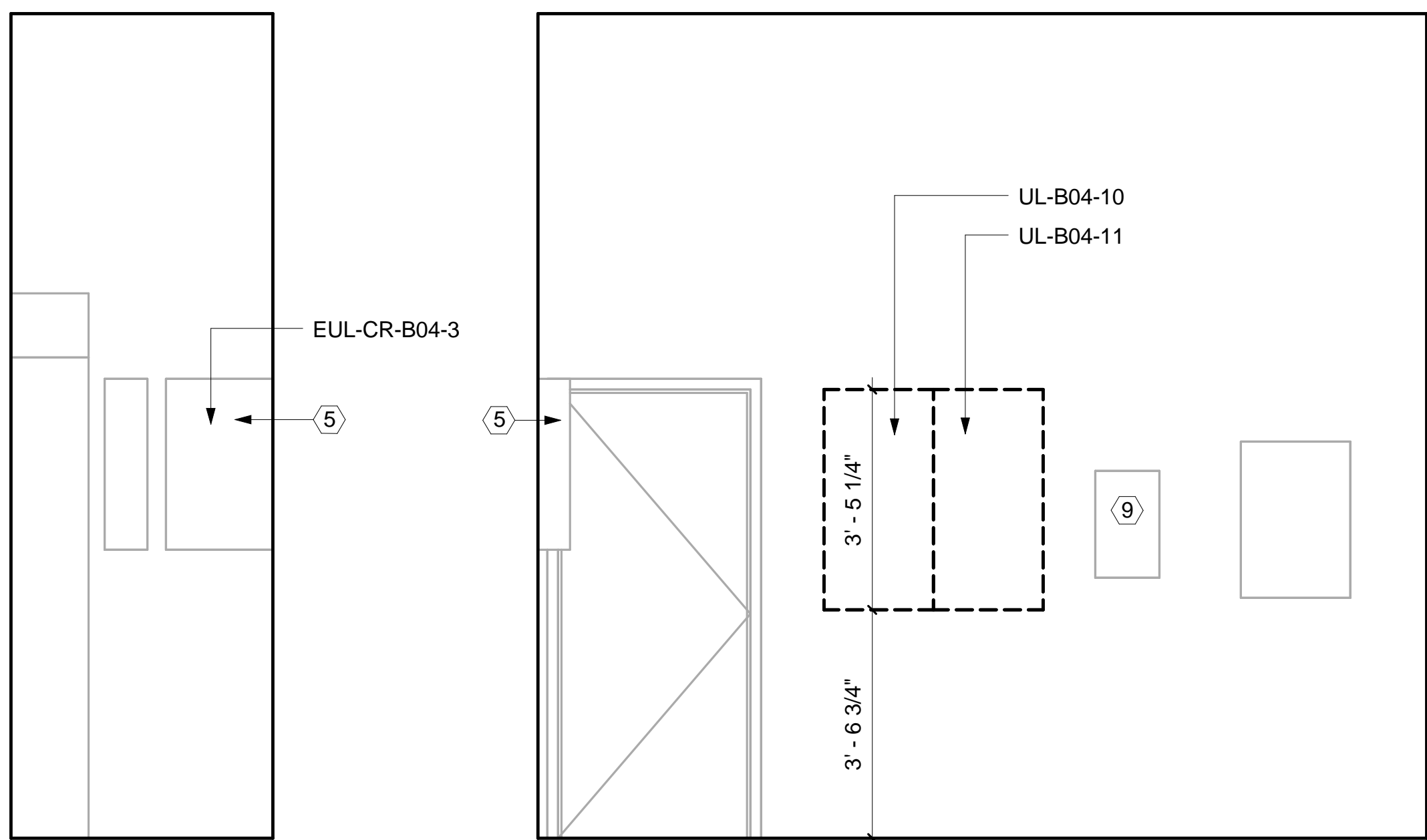
Drawing Number
E-102B

Office of
Construction
and Facilities
Management

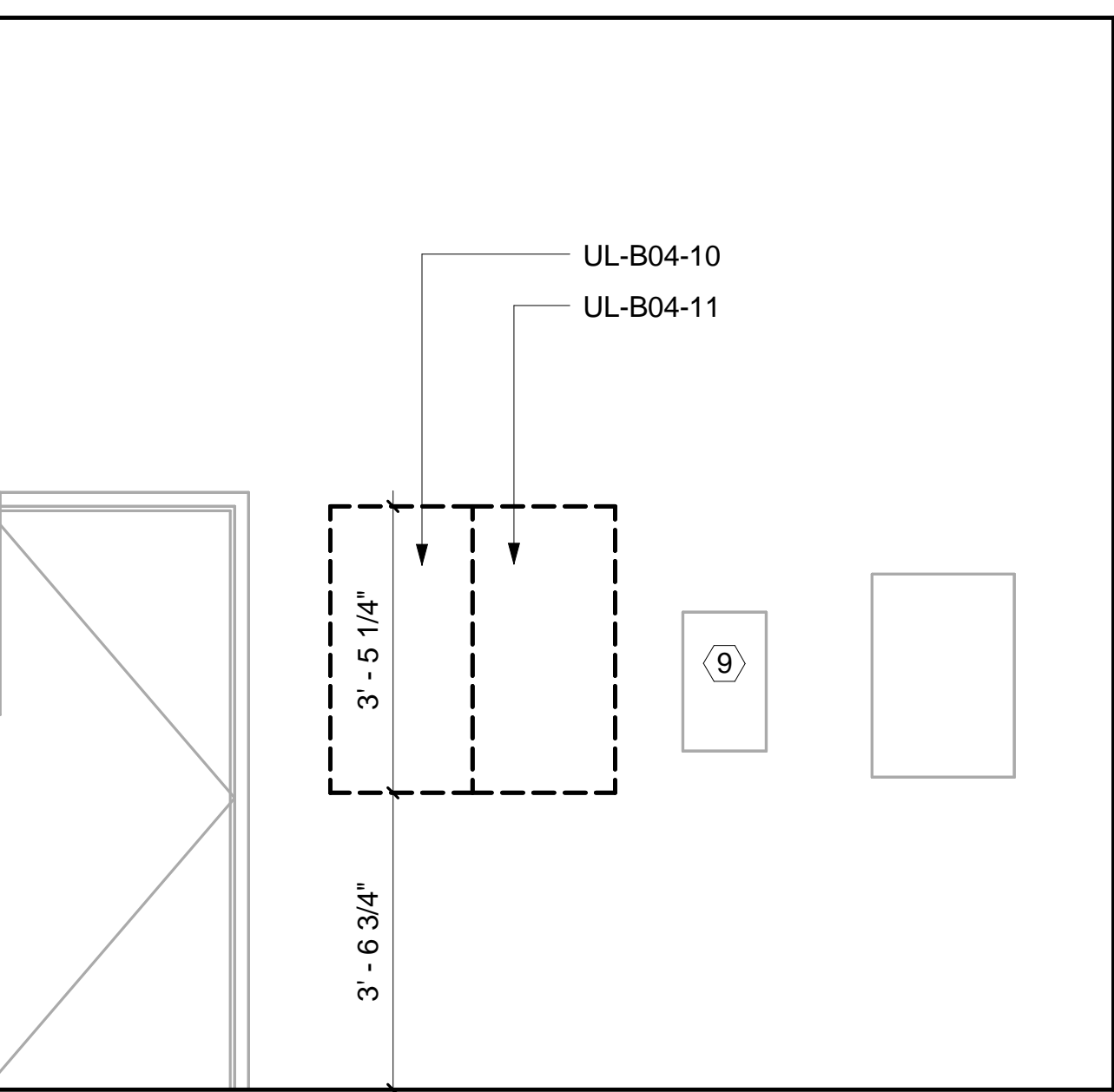




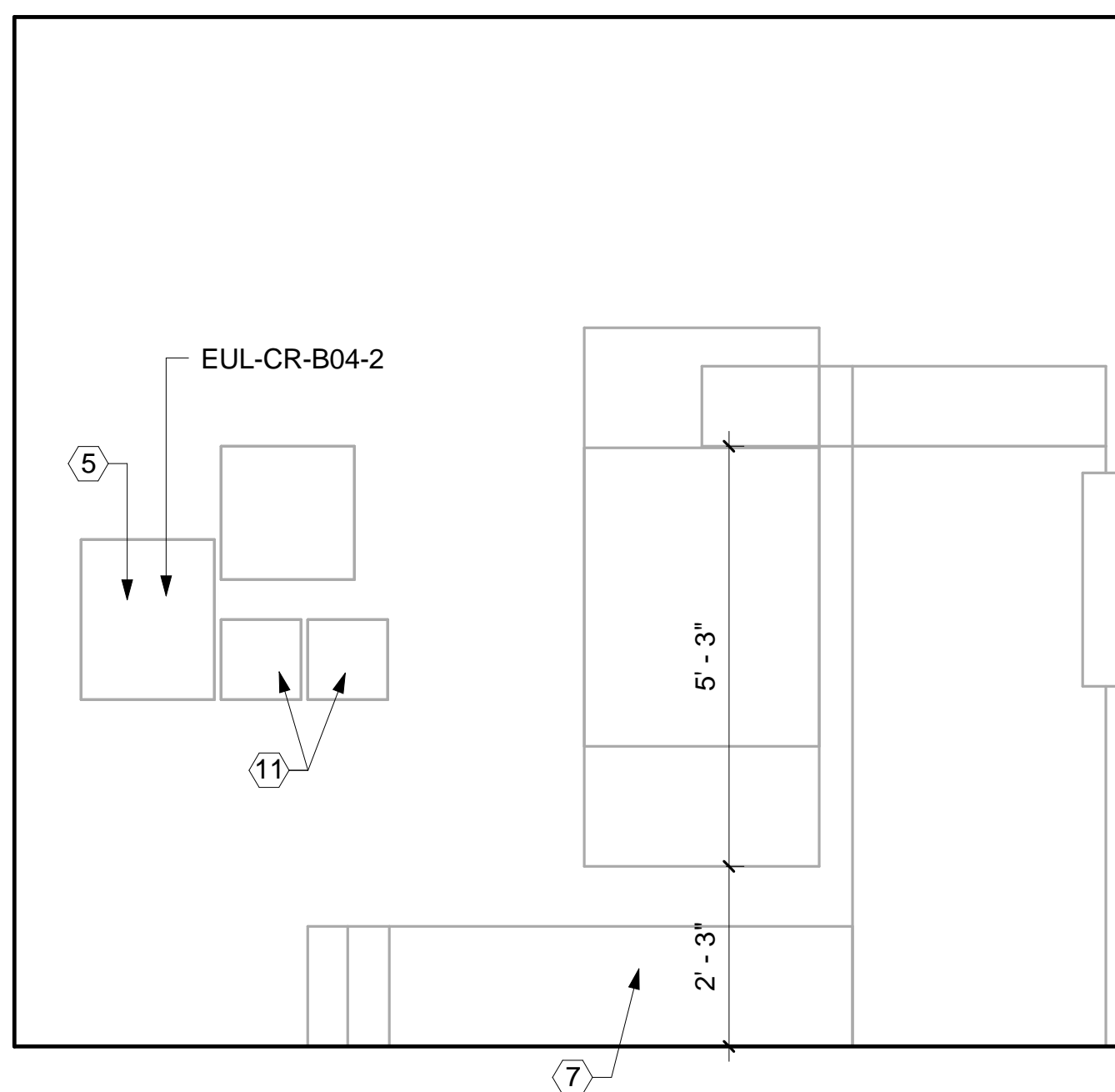
1 BASEMENT LEVEL - B0460 EC - DEMOLITION PLAN
1/2" = 1'-0"



C B0460 EC - DEMOLITION ELEVATION C
1/2" = 1'-0"



A B0460 EC - DEMOLITION ELEVATION A
1/2" = 1'-0"



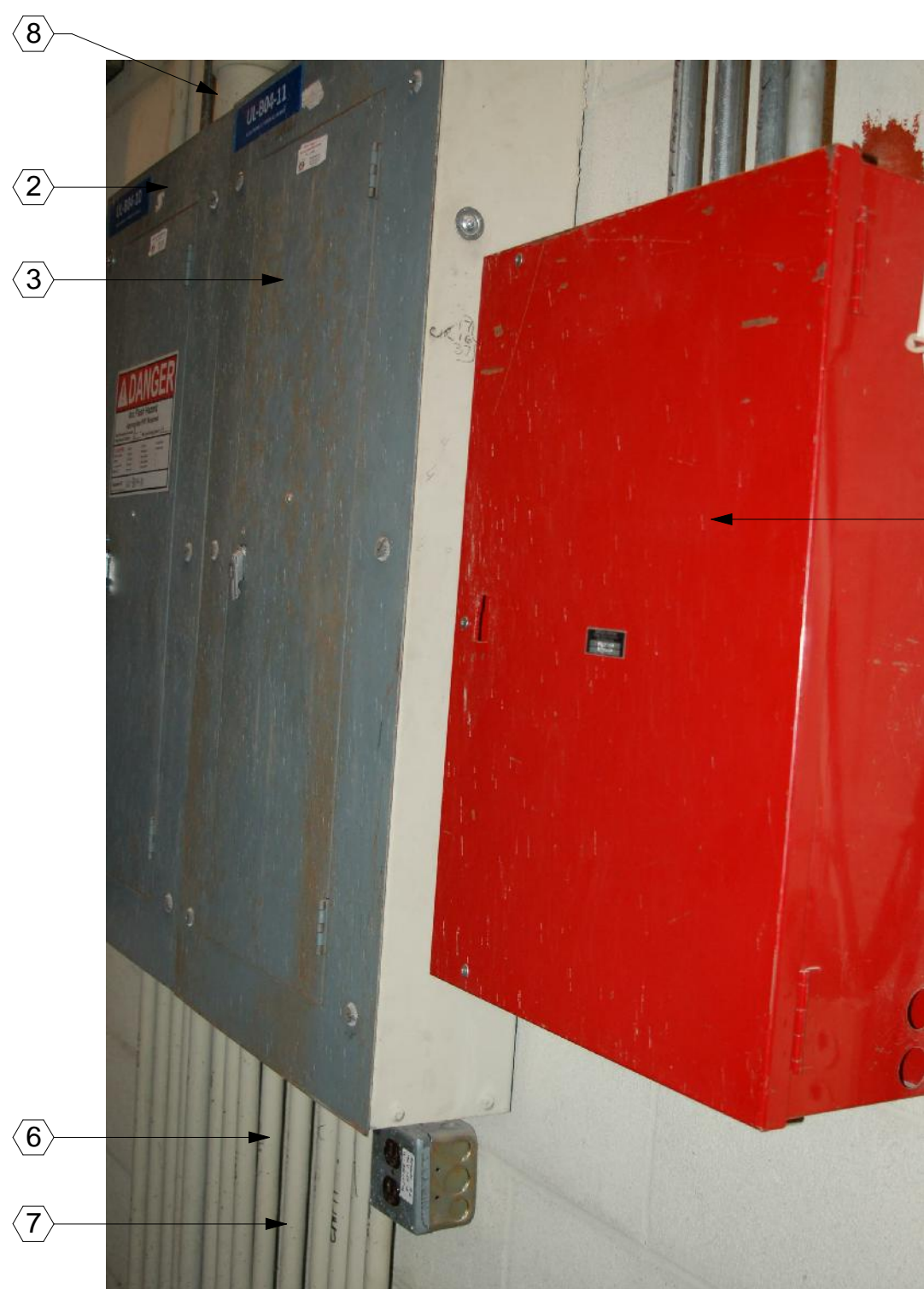
B B0460 EC - DEMOLITION ELEVATION B
1/2" = 1'-0"



P1 B0460 EC - PHOTO 1
NOT TO SCALE



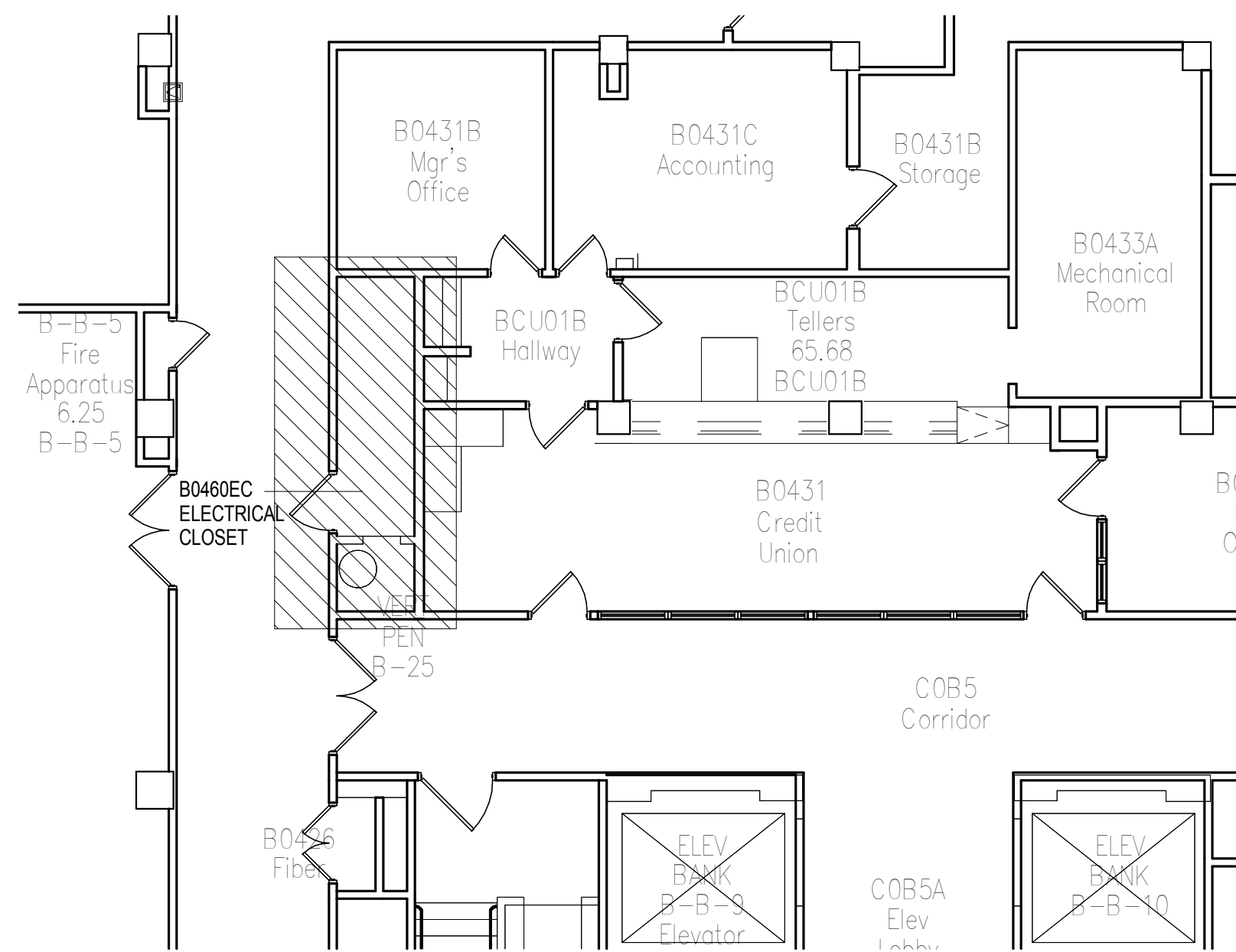
P2 B0460 EC - PHOTO 2
NOT TO SCALE



P3 B0460 EC - PHOTO 3
NOT TO SCALE



P4 B0460 EC - PHOTO 4
NOT TO SCALE



2 KEY PLAN B0460 EC DEMOLITION
NOT TO SCALE

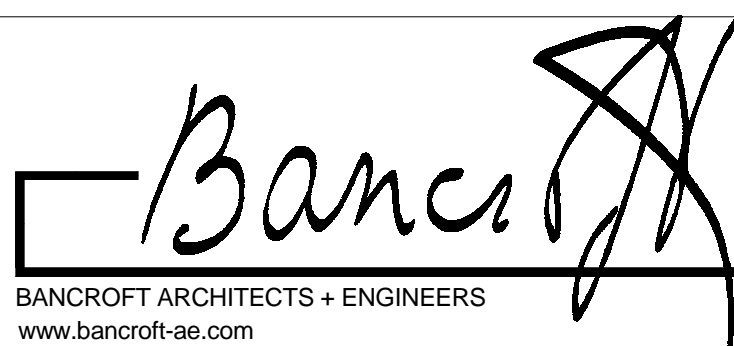
B0460 EC

VA CONTRACT NO. VA69D-15-J-1908

FINAL CONSTRUCTION DOCUMENT BID SET	01/13/2017
95% CONSTRUCTION DOCUMENT SUBMITTAL	10/13/2016
65% CONSTRUCTION DOCUMENT SUBMITTAL	08/02/2016
35% SCHEMATIC DESIGN SUBMITTAL	04/28/2016
Revisions:	Date

CONSULTANTS:

ARCHITECT/ENGINEERS:



700 Nicholas Blvd. Suite 300
Elk Grove Village, IL 60007
T: 847.952.9362 F: 847.952.9403
Bancroft AE No. 14-101

Drawing Title
**ROOM B0460 EC - ELECTRICAL
DEMOLITION PLAN**

Approved: Project Director
-
VAPAHCS PLANNING AND ENGINEERING

Project Title
UPGRADE W PANELS

Location
**5000 W. NATIONAL AVE.
MILWAUKEE, WI 53295**

Date
01/13/2017

Checked
LF

Drawn
AG AB EM

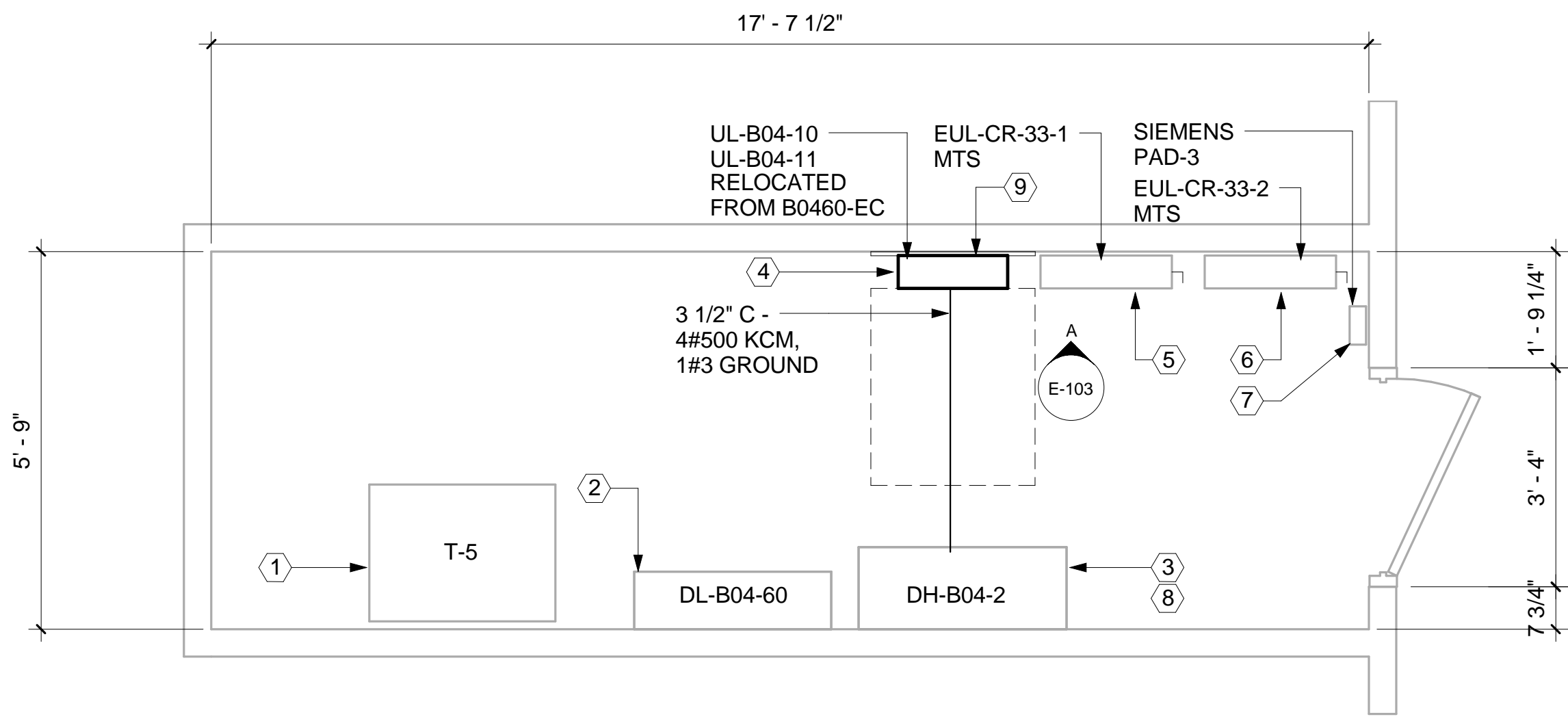
Project Number
695-16-108

Building Number
111

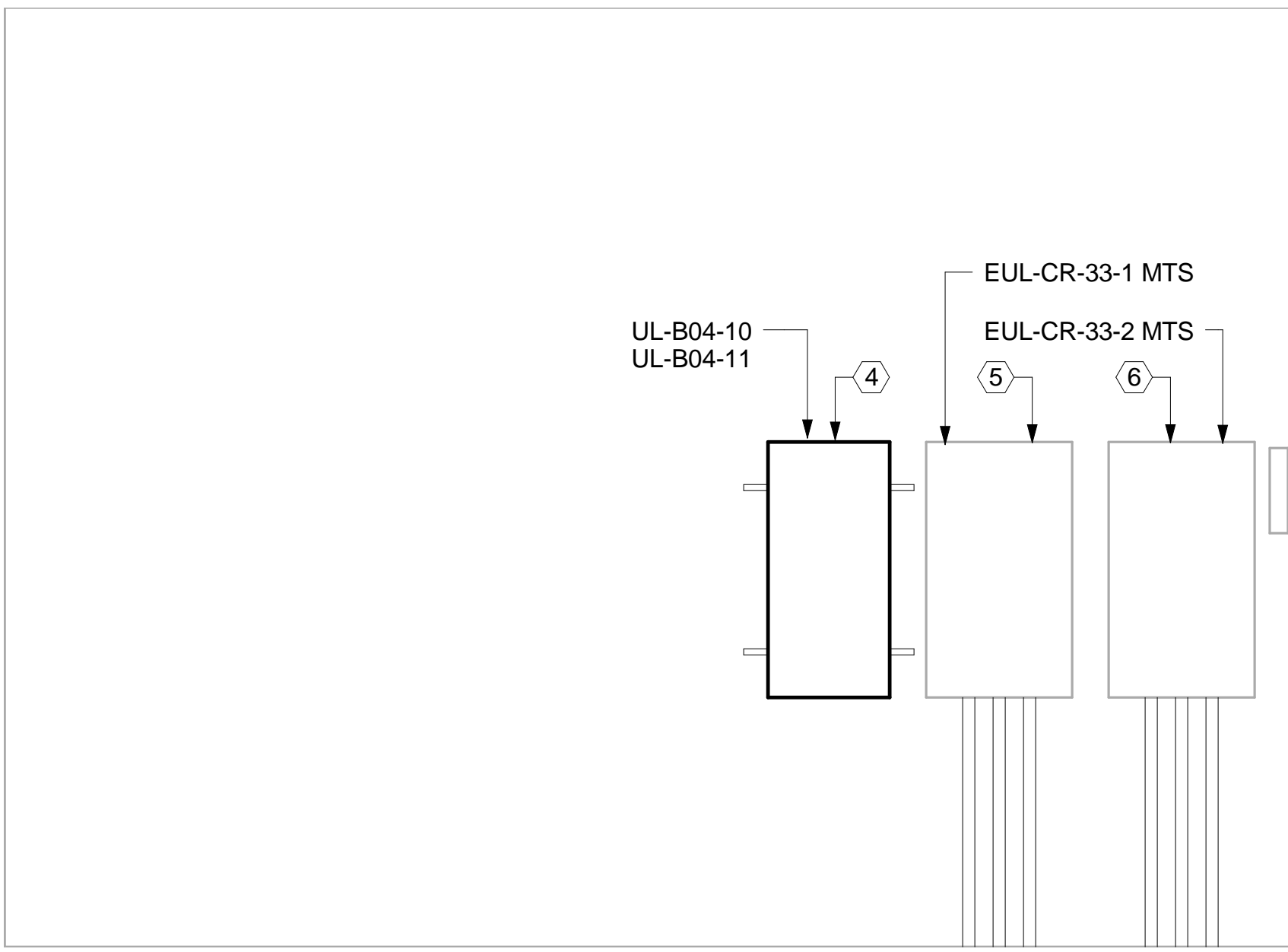
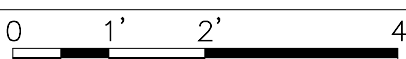
Drawing Number
ED-103

Office of
Construction
and Facilities
Management



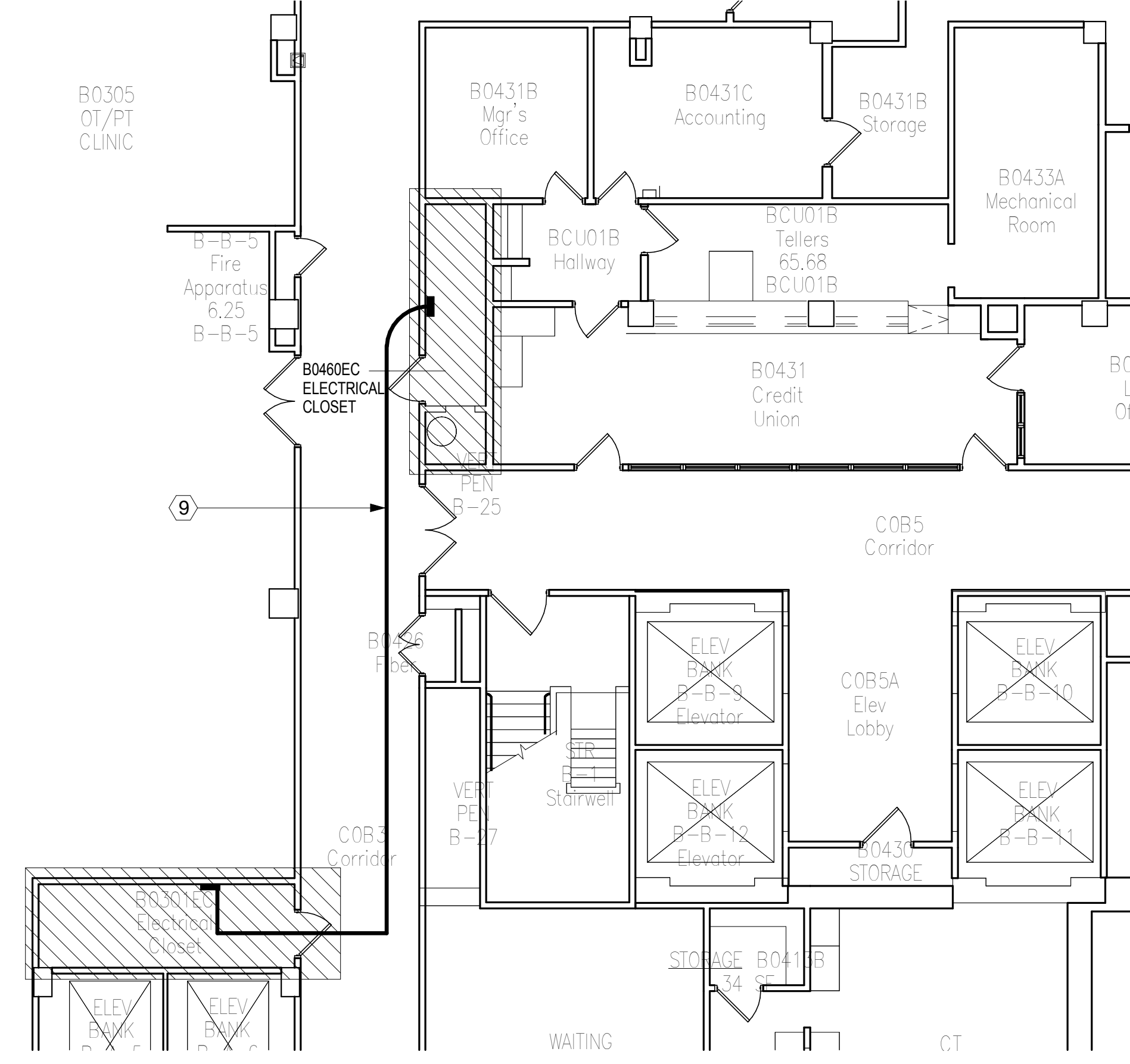
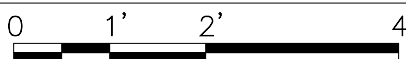


1 BASEMENT LEVEL - B0301 EC - CONSTRUCTION PLAN
1/2" = 1'-0"



A

B0301 EC - CONSTRUCTION ELEVATION A
1/2" = 1'-0"



2 KEY PLAN B0460 EC & B0301 EC
NOT TO SCALE

GENERAL NOTES

- REFER TO ARCHITECTURAL CONSTRUCTION DRAWINGS FOR ADDITIONAL INFORMATION.
- REFER TO DRAWING E-704 FOR NEW TRANSFORMER SCHEDULE AND RELATED WORK.
- REFER TO SPECIFICATION, VOLUME 2, APPENDIX A - PHOTO DOCUMENTATION - EXISTING DISTRIBUTION PANELBOARDS.
- REFER TO SPECIFICATION, VOLUME 2, APPENDIX B - PHOTO DOCUMENTATION - EXISTING ELECTRICAL CLOSETS.
- REFER TO SPECIFICATION, VOLUME 2, APPENDIX C - NEW PANELBOARD SCHEDULES.

(X)

ELECTRICAL KEYED NOTES

- EXISTING TRANSFORMER T-5 IS SCHEDULED TO REMAIN.
- EXISTING DL-B04-60 IS SCHEDULED TO REMAIN.
- EXISTING DH-B04-2 IS SCHEDULED TO REMAIN.
- UL-B04-10 UL-B04-11: FURNISH AND INSTALL 84 CIRCUIT PANELBOARD.
- EUL-CR-33-1 MTS [MANUAL TRANSFER SWITCH] IS SCHEDULED TO REMAIN.
- EUL-CR-33-2 MTS [MANUAL TRANSFER SWITCH] IS SCHEDULED TO REMAIN.
- SIEMENS PAD-3 IS SCHEDULED TO REMAIN.
- DH-B04-2 CIRCUIT #2 SHALL BE FED TO UL-B04-10 AND UL-B04-11. ADJUST THE SENSOR SETTING TO 400 AMPERES.
- PROVIDE 14 SETS OF 3/4" CONDUITS WITH 8 #12, 2 #12 GROUND EACH FROM NEW LOCATION OF PANELS UL-B04-10 AND UL-B04-11 TO ROOM B0460EC NEW PULLBOX. SPLICE THE WIRES WITH CORRESPONDING CIRCUITS OF EXISTING CIRCUITS LOADS.

VA CONTRACT NO. VA69D-15-J-1908

FINAL CONSTRUCTION DOCUMENT BID SET	01/13/2017
95% CONSTRUCTION DOCUMENT SUBMITTAL	10/13/2016
65% CONSTRUCTION DOCUMENT SUBMITTAL	08/02/2016
35% SCHEMATIC DESIGN SUBMITTAL	04/28/2016
Revisions:	Date

CONSULTANTS:

ARCHITECT/ENGINEERS:

Bancroft
BANCROFT ARCHITECTS + ENGINEERS
www.bancroft-ae.com
700 Nicholas Blvd. Suite 300
Elk Grove Village, IL 60007
T: 847.952.9362 F: 847.952.9403
Bancroft AE No. 14-101

Drawing Title
ROOM B0301 EC - ELECTRICAL CONSTRUCTION PLAN

Approved: Project Director
-
VAPAHCS PLANNING AND ENGINEERING

Project Title
UPGRADE W PANELS

Location
5000 W. NATIONAL AVE.
MILWAUKEE, WI 53295

Date
01/13/2017

Checked
LF

Drawn
AG AB EM

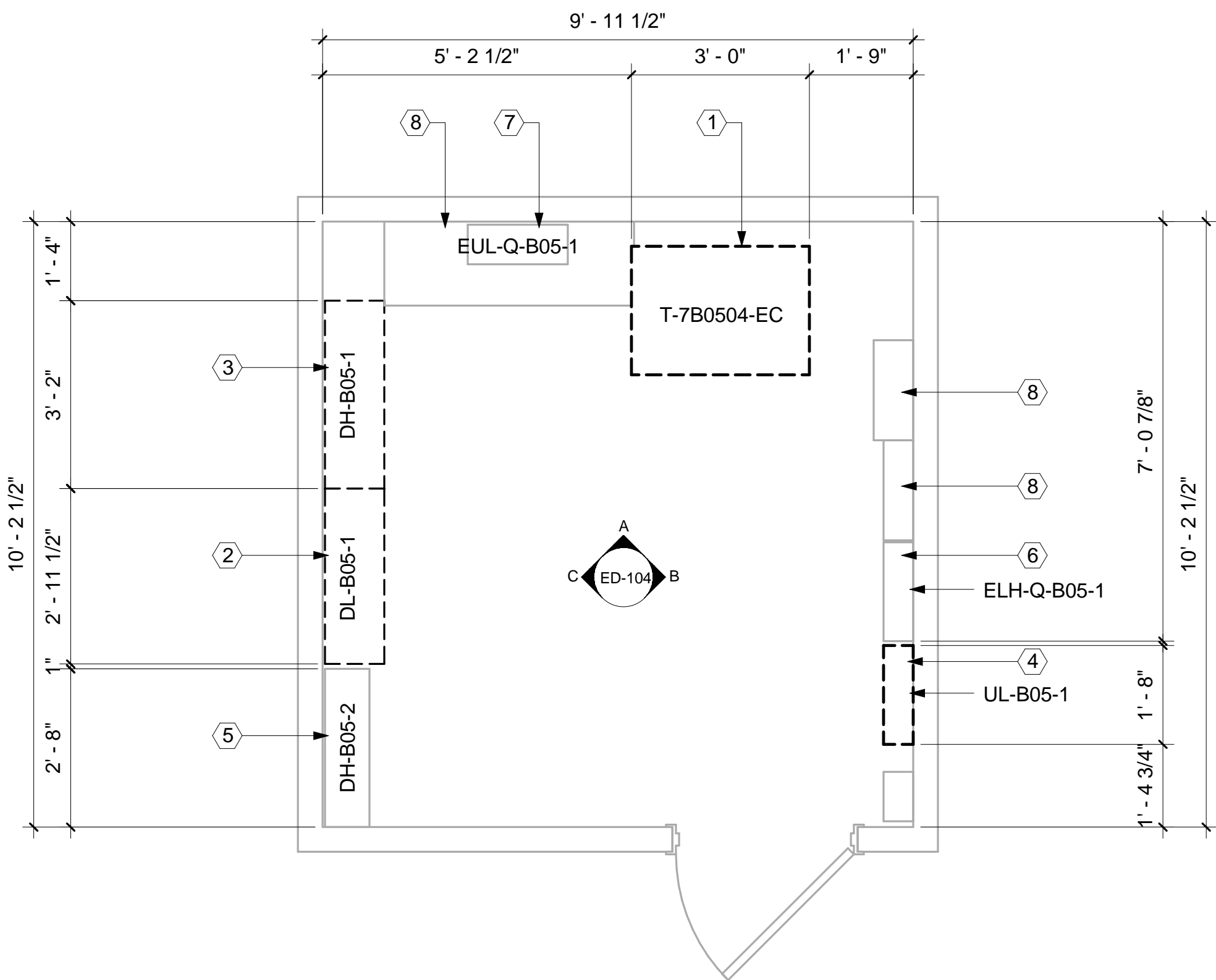
Project Number
695-16-108

Building Number
111

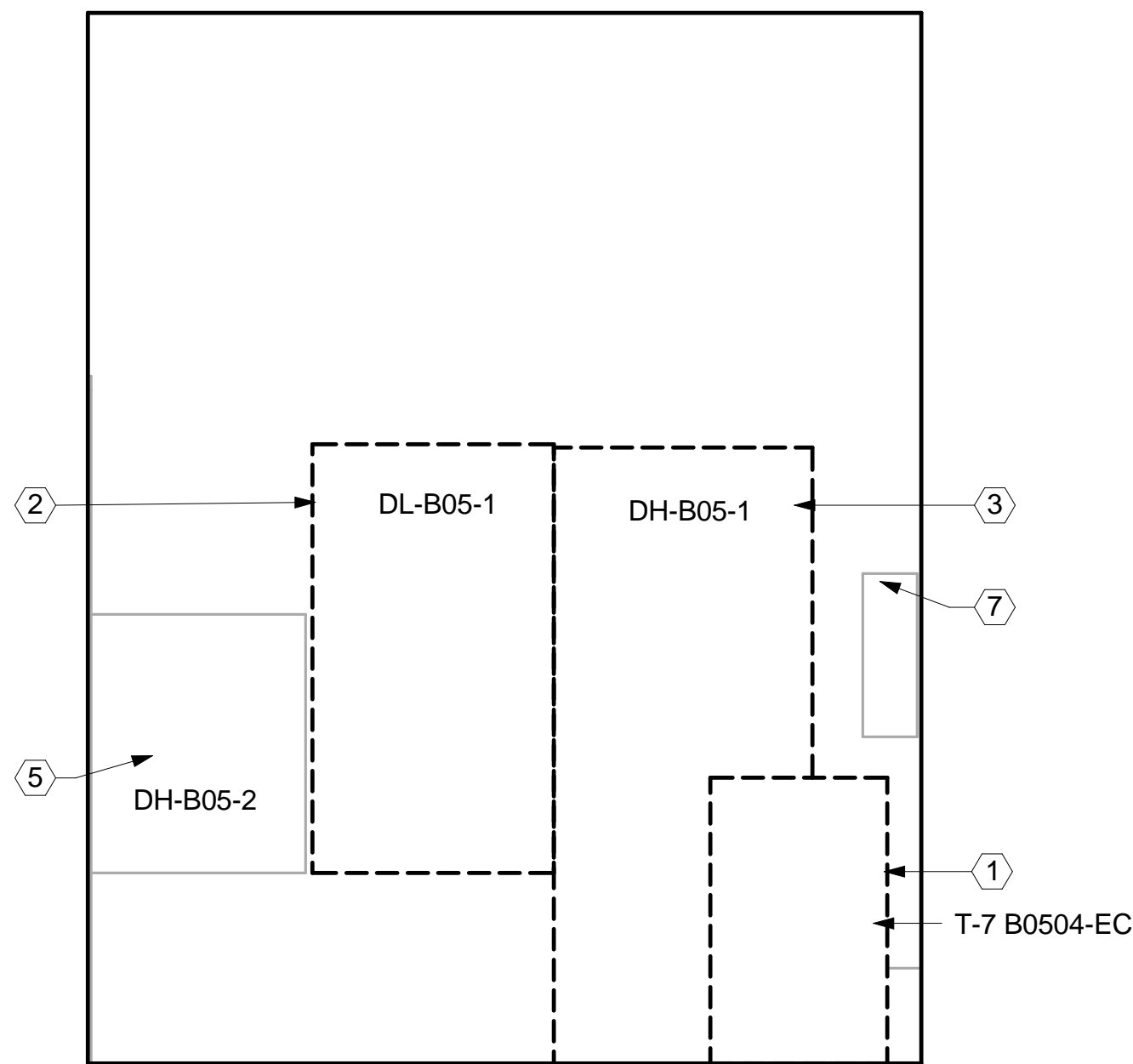
Drawing Number
E-103

Office of
Construction
and Facilities
Management

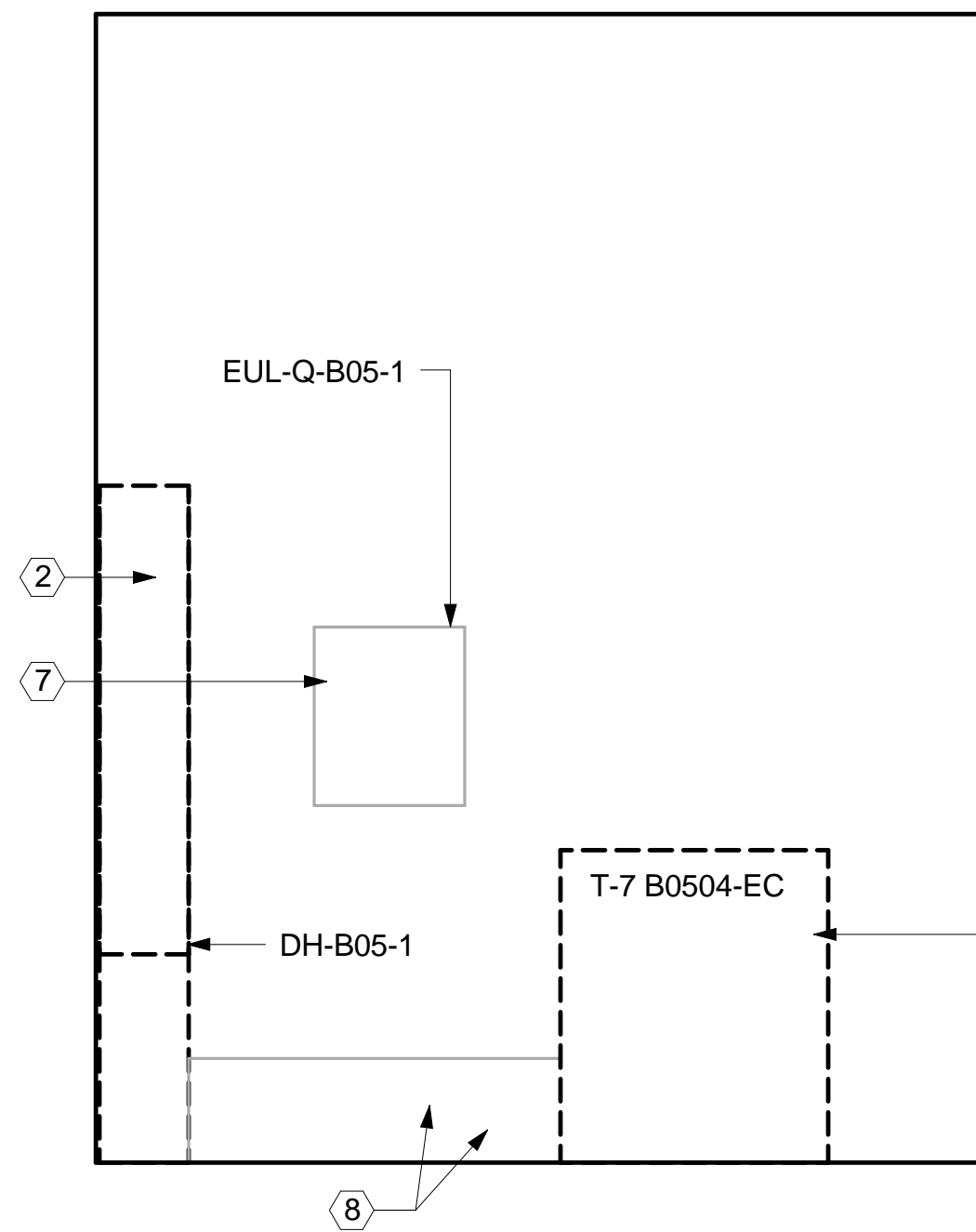
Department of
Veterans Affairs



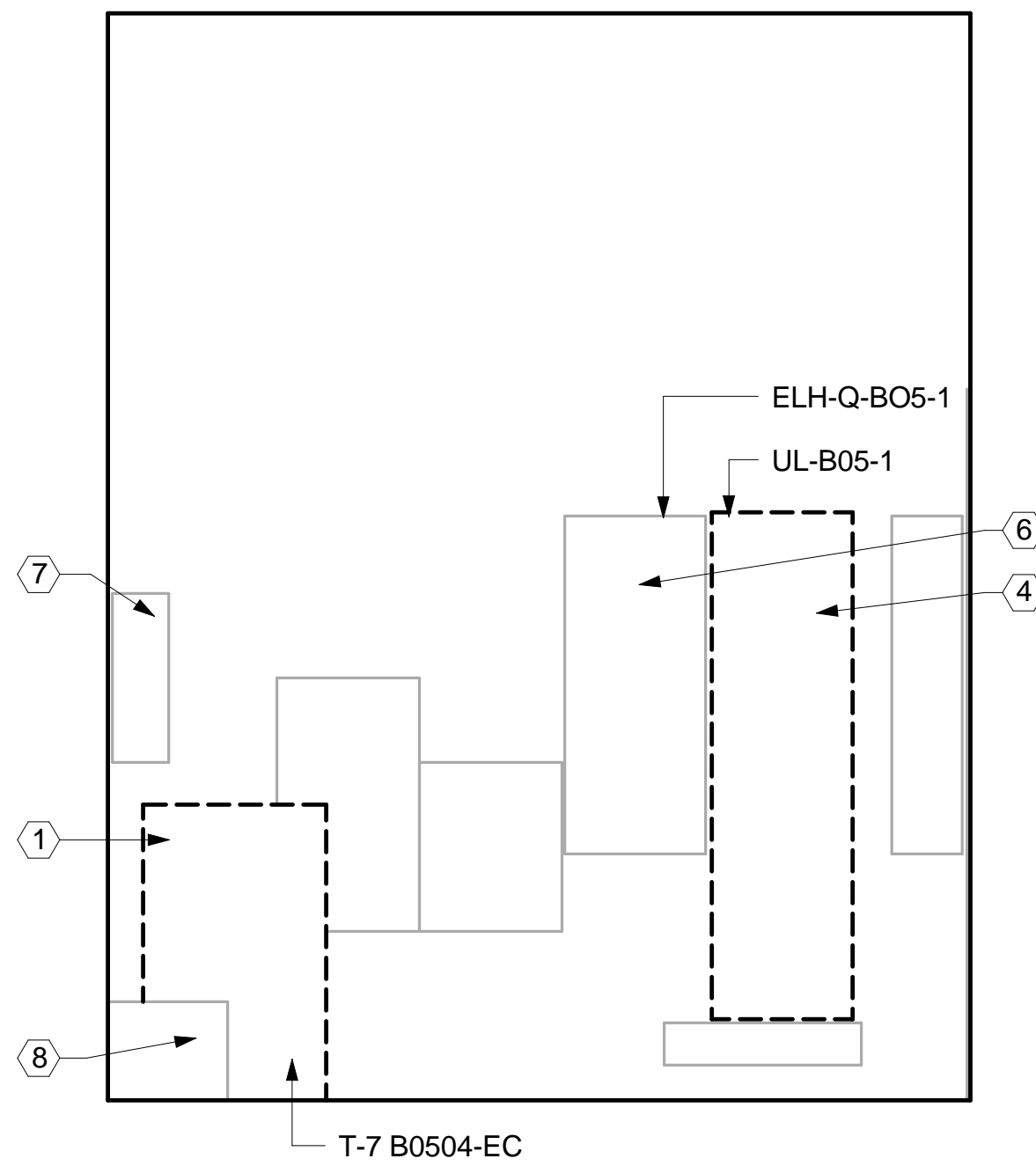
1 BASEMENT LEVEL - B0504 EC - DEMOLITION PLAN
1/2" = 1'-0"



C B0504 EC - DEMOLITION ELEVATION C
1/2" = 1'-0"



A B0504 EC - DEMOLITION ELEVATION A
1/2" = 1'-0"



B B0504 EC - DEMOLITION ELEVATION B
1/2" = 1'-0"



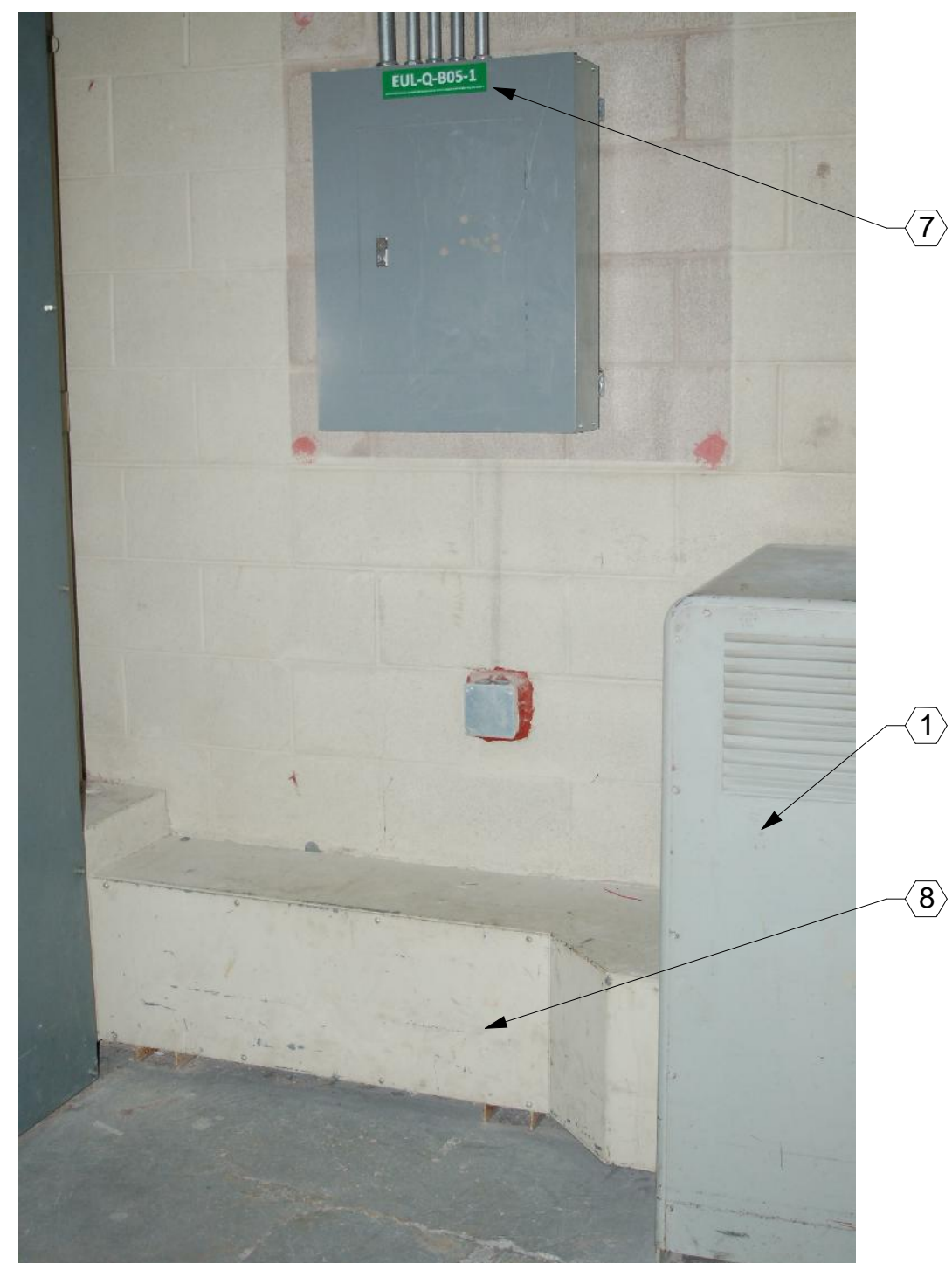
P1 B0504 EC - PHOTO 1
NOT TO SCALE



P2 B0504 EC - PHOTO 2
NOT TO SCALE



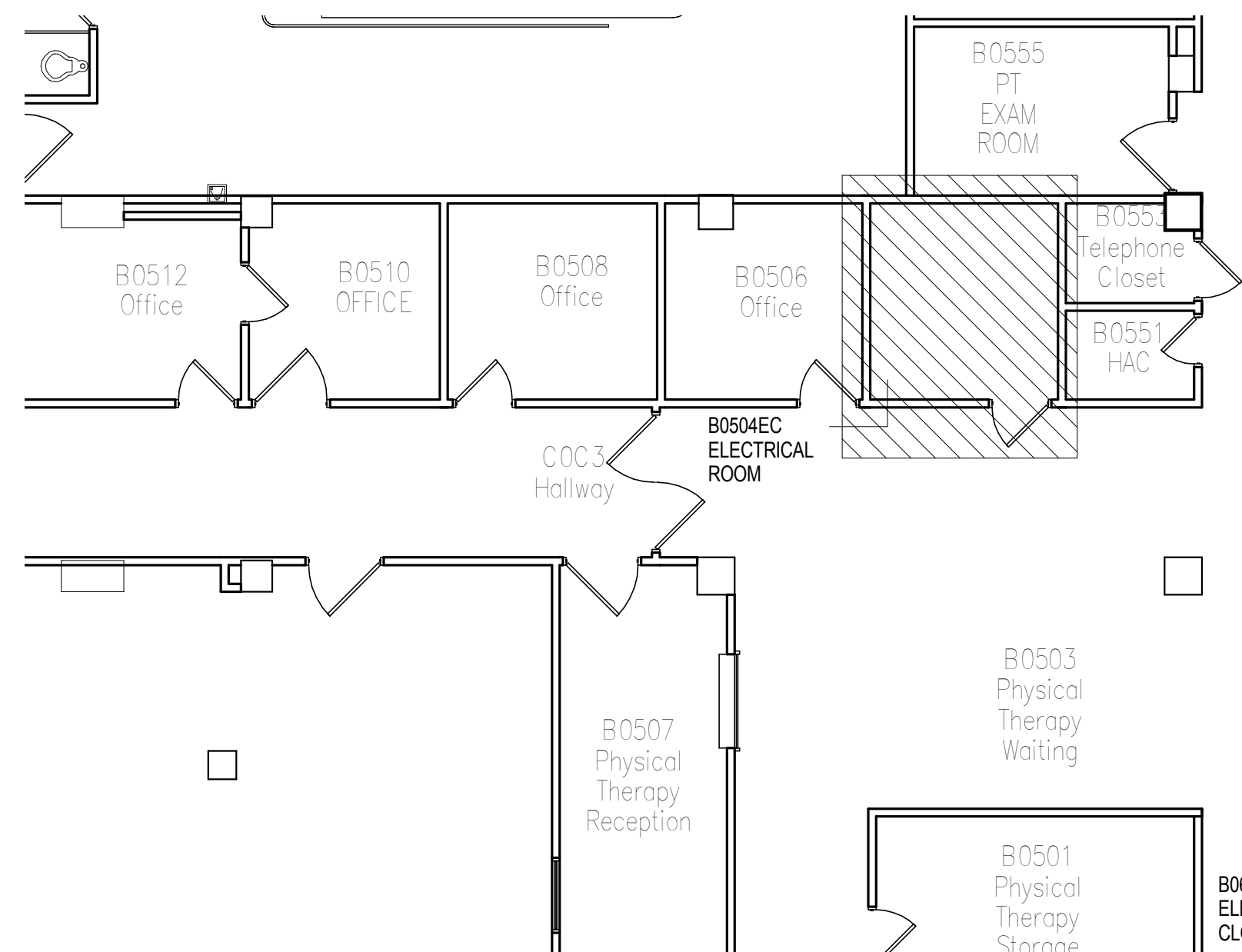
P4 B0504 EC - PHOTO 4
NOT TO SCALE



P5 B0504 EC - PHOTO 5
NOT TO SCALE



P3 B0504 EC - PHOTO 3
NOT TO SCALE



2 KEY PLAN B0504 EC DEMOLITION
NOT TO SCALE

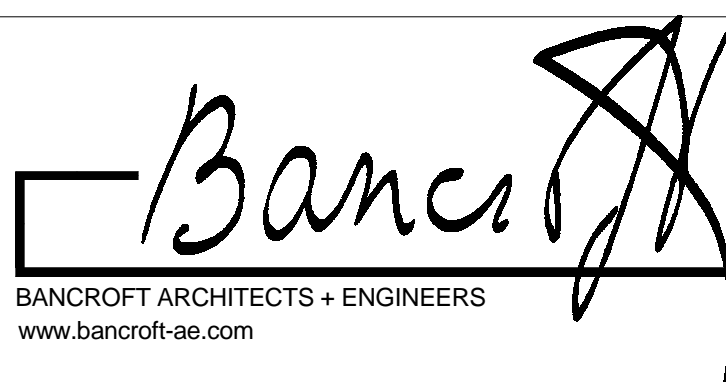
B0504 EC

VA CONTRACT NO. VA69D-15-J-1908

FINAL CONSTRUCTION DOCUMENT BID SET	01/13/2017
95% CONSTRUCTION DOCUMENT SUBMITTAL	10/13/2016
65% CONSTRUCTION DOCUMENT SUBMITTAL	08/02/2016
35% SCHEMATIC DESIGN SUBMITTAL	04/28/2016
Revisions:	Date

CONSULTANTS:

ARCHITECT/ENGINEERS:



700 Nicholas Blvd. Suite 300
Elk Grove Village, IL 60007
T: 847.952.9362 F: 847.952.9403
Bancroft AE No. 14-101

Drawing Title
ROOM B0504 EC - ELECTRICAL
DEMOLITION PLAN

Approved: Project Director
-
VAPAHCS PLANNING AND ENGINEERING

Project Title
UPGRADE W PANELS

Location
5000 W. NATIONAL AVE.
MILWAUKEE, WI 53295

Date
01/13/2017

Checked
LF

Drawn
AG AB EM

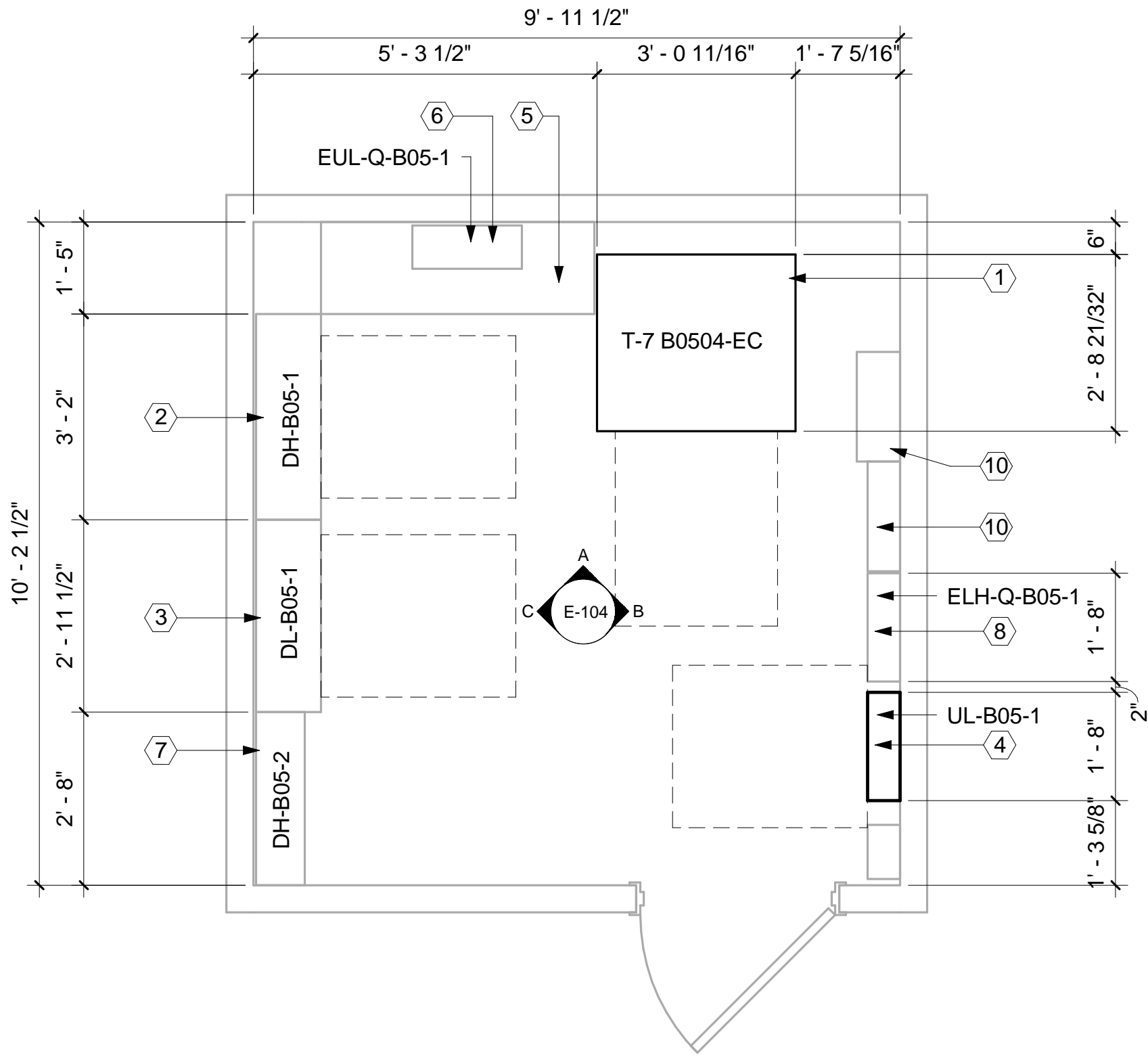
Project Number
695-16-108

Building Number
111

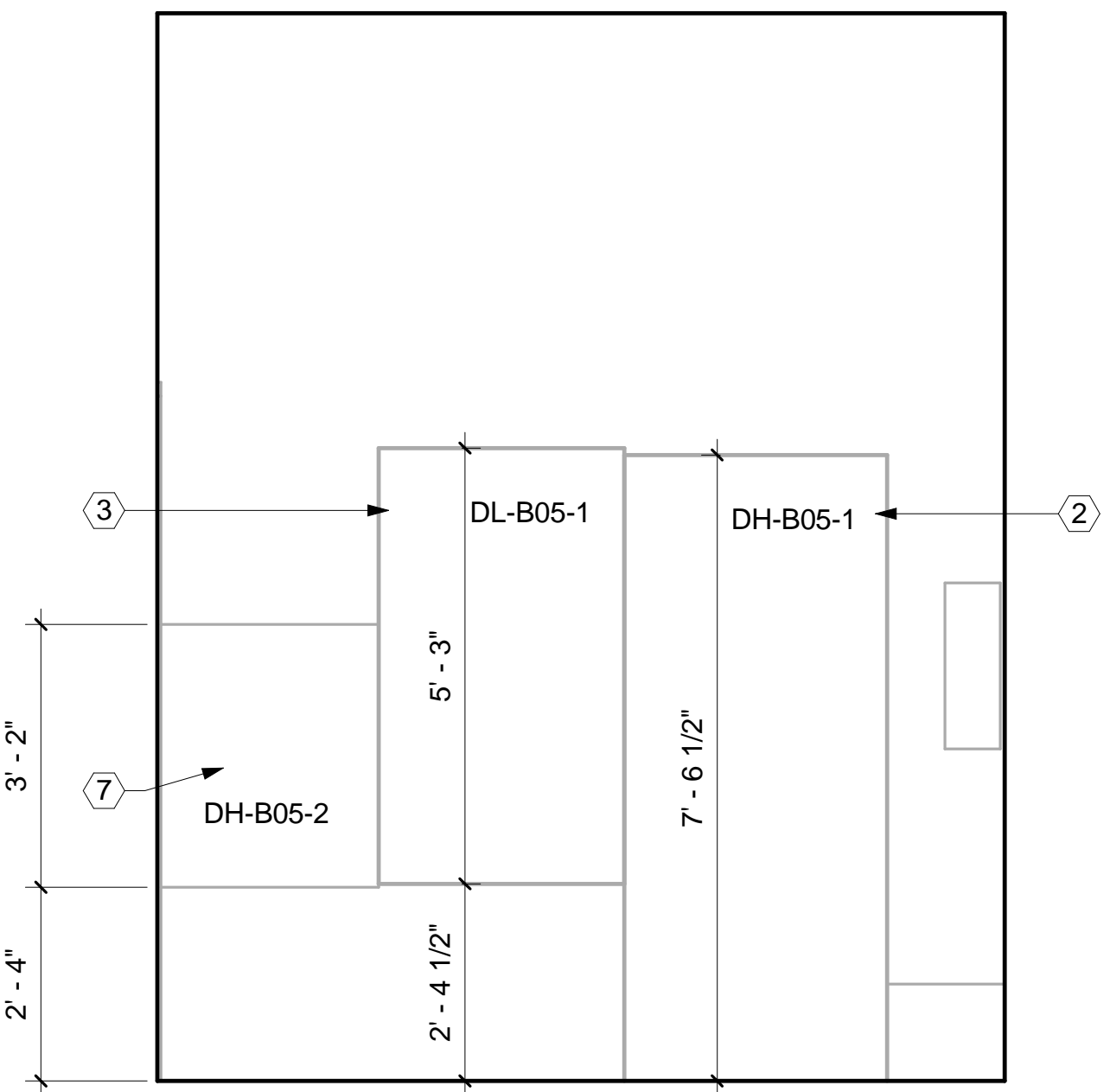
Drawing Number
ED-104

Office of
Construction
and Facilities
Management

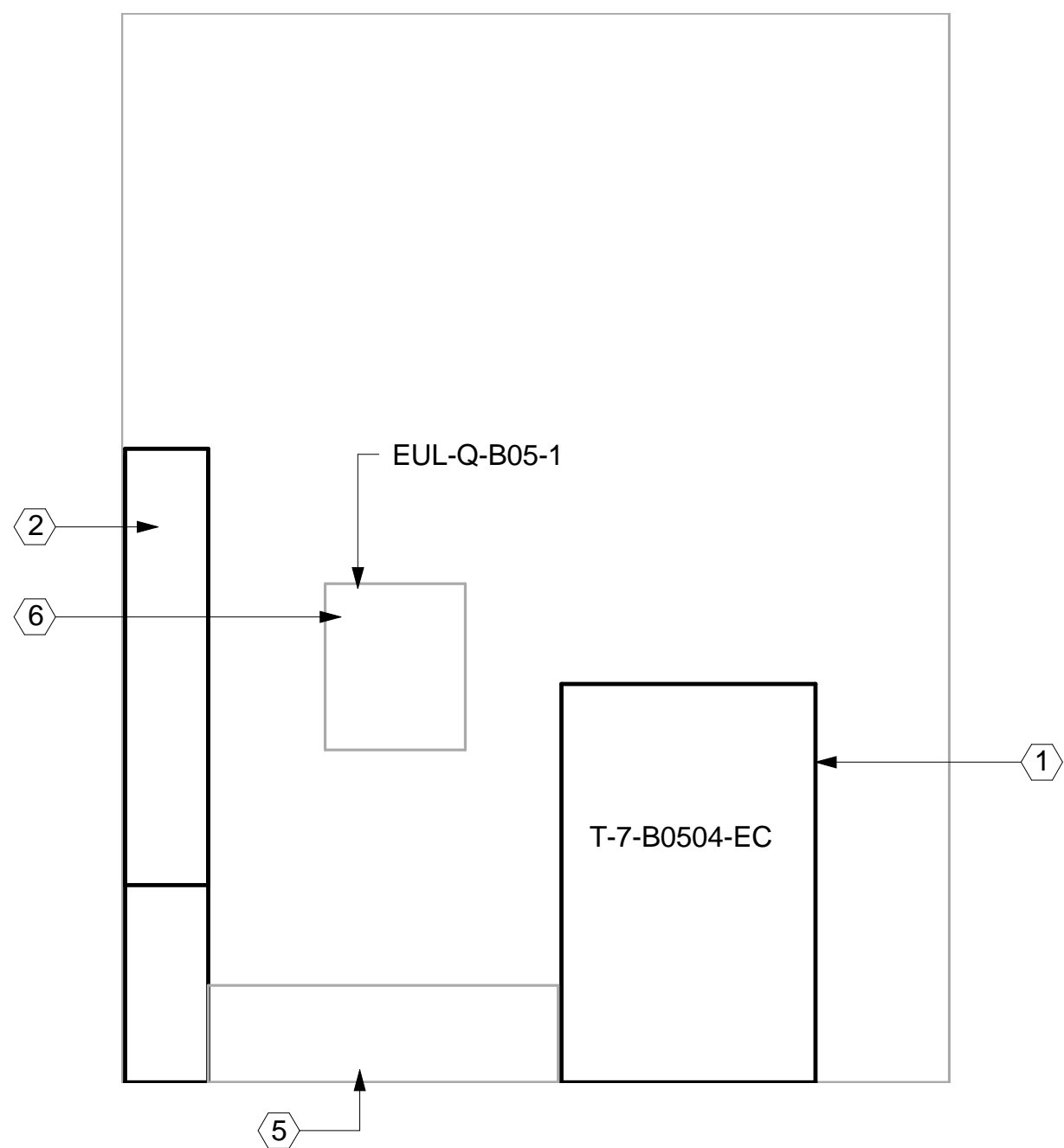




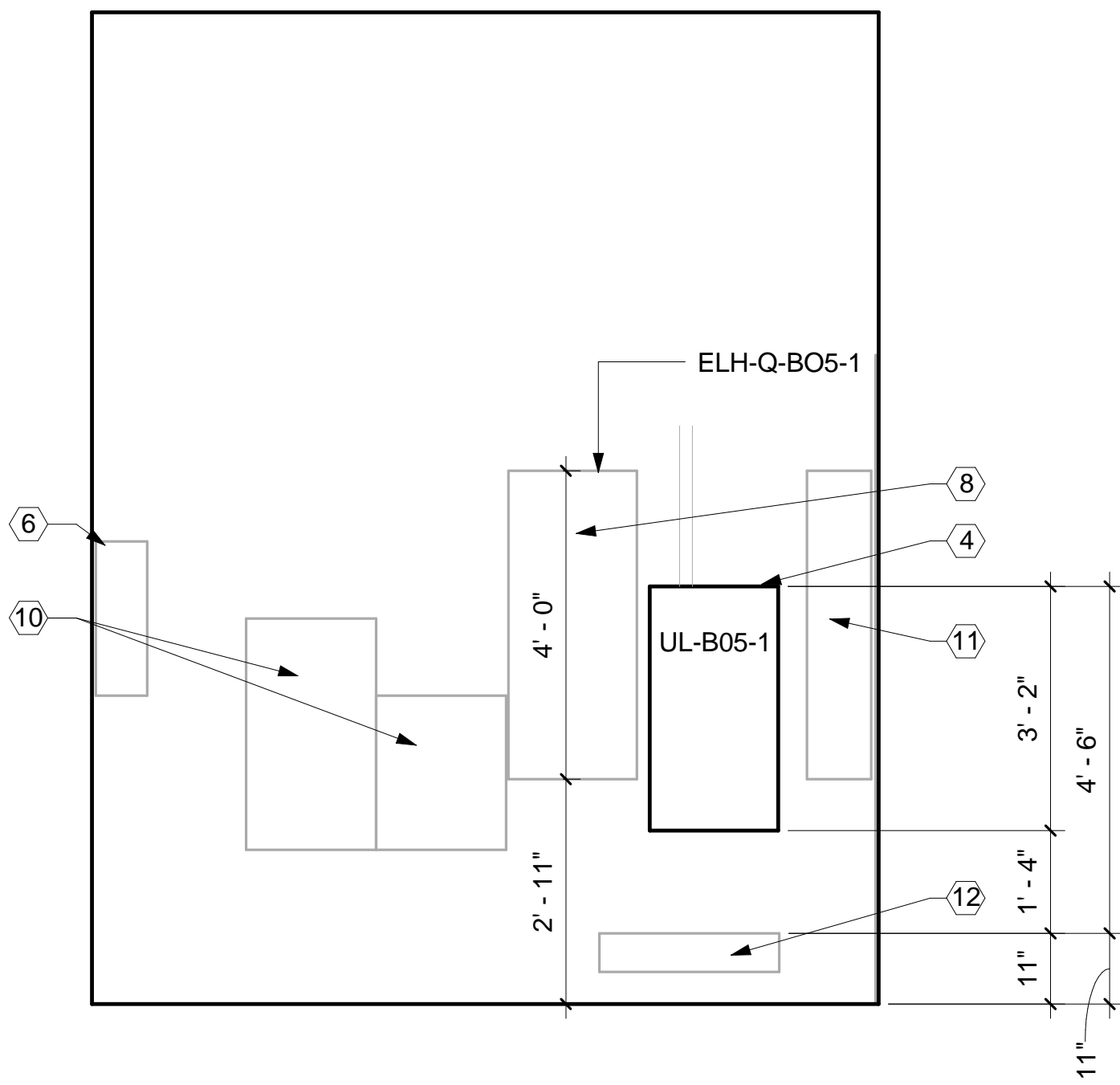
PLAN NORTH 1 BASEMENT LEVEL - B0504 EC - CONSTRUCTION PLAN
1/2" = 1'-0"



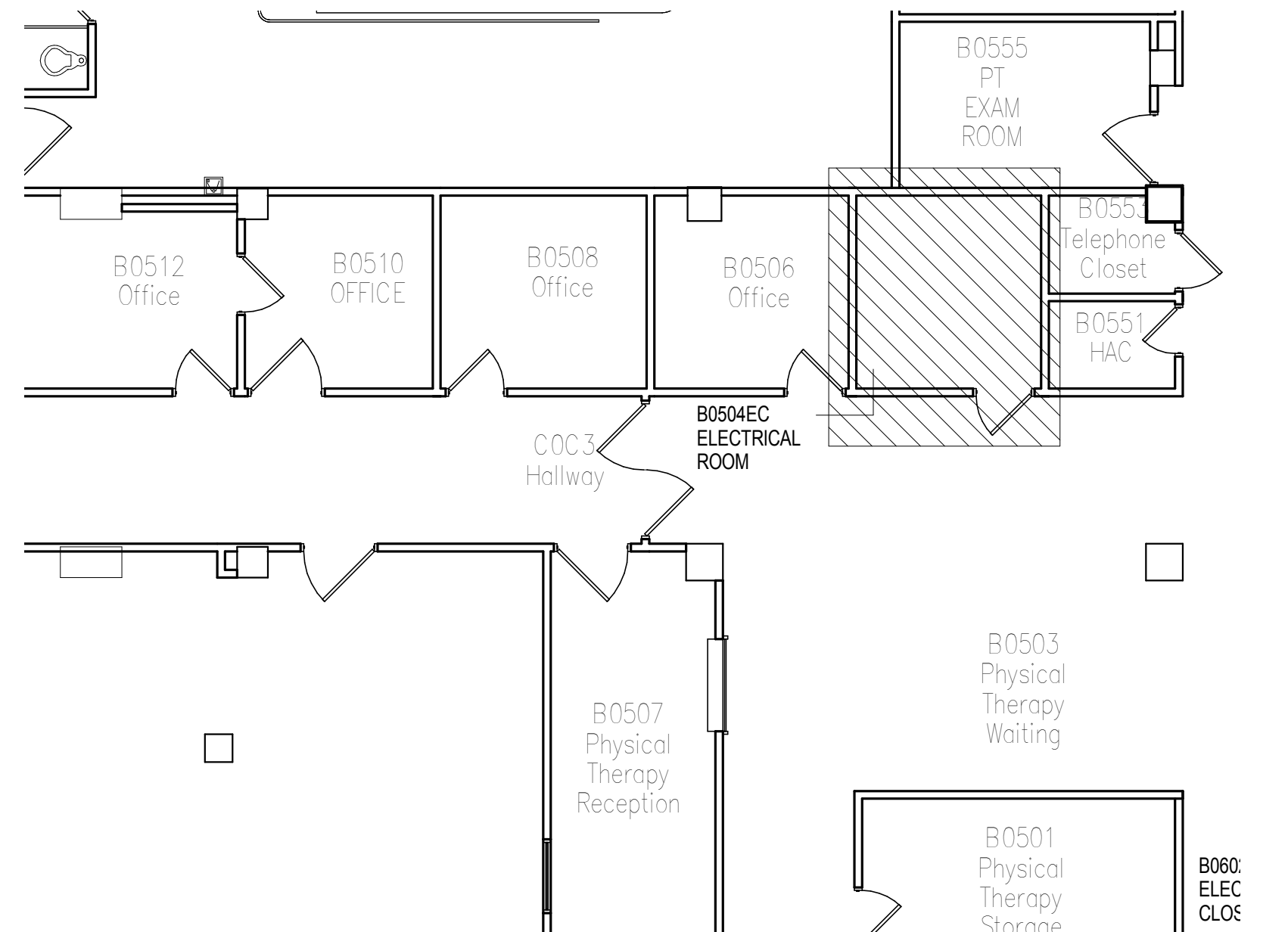
C B0504 EC - CONSTRUCTION ELEVATION C
1/2" = 1'-0"



A B0504 EC - CONSTRUCTION ELEVATION A
1/2" = 1'-0"



B B0504 EC - CONSTRUCTION ELEVATION B
1/2" = 1'-0"



PLAN NORTH 2 KEY PLAN B0504 EC
NOT TO SCALE

GENERAL NOTES

- REFER TO ARCHITECTURAL CONSTRUCTION DRAWINGS FOR ADDITIONAL INFORMATION.
- REFER TO DRAWING E-704 FOR NEW TRANSFORMER SCHEDULE AND RELATED WORK.
- REFER TO SPECIFICATION, VOLUME 2, APPENDIX A - PHOTO DOCUMENTATION - EXISTING DISTRIBUTION PANELBOARDS.
- REFER TO SPECIFICATION, VOLUME 2, APPENDIX B - PHOTO DOCUMENTATION - EXISTING ELECTRICAL CLOSETS.
- REFER TO SPECIFICATION, VOLUME 2, APPENDIX C - NEW PANELBOARD SCHEDULES.

ELECTRICAL KEYED NOTES

- PROVIDE TRANSFORMER T-7 B0504-EC:
300 KVA, 480 120/208 V.
- EXISTING DISTRIBUTION PANELBOARD DH-B05-1 SHALL BE RETROFITTED. PROVIDE BREAKERS:
2000: 3/150 AMP, 1/300 AMP, 3/400 AMP, 1/600 AMP AND 1/800 AMP.
- EXISTING DISTRIBUTION PANELBOARD DL-B05-1 SHALL BE RETROFITTED. PROVIDE BREAKERS 1200: 3/300 AMP, 1/400 AMP AND 1/200 AMP.
- UL-B05-1:
FURNISH AND INSTALL PANELBOARD,
42 CIRCUIT PANEL BOARD.
- EXISTING METAL RACEWAY IS SCHEDULED TO REMAIN EXCEPT AS FOLLOWS.
- EXISTING PANELBOARD EUL-Q-B05-1 IS SCHEDULED TO REMAIN.
- EXISTING DISTRIBUTION PANELBOARD DH-B05-2 IS SCHEDULED TO REMAIN.
- EXISTING PANELBOARD ELH-Q-B05-1 IS SCHEDULED TO REMAIN.
- FURNISH AND INSTALL DUPLEX POWER OUTLET.
- EXISTING METAL PULL BOXES ARE SCHEDULED TO REMAIN.
- EXISTING SURFACE MOUNTED SHUT-OFF SWITCH IS SCHEDULED TO REMAIN.
- FURNISH AND INSTALL ENCLOSED CIRCUIT BREAKER AT UL-B05-1.

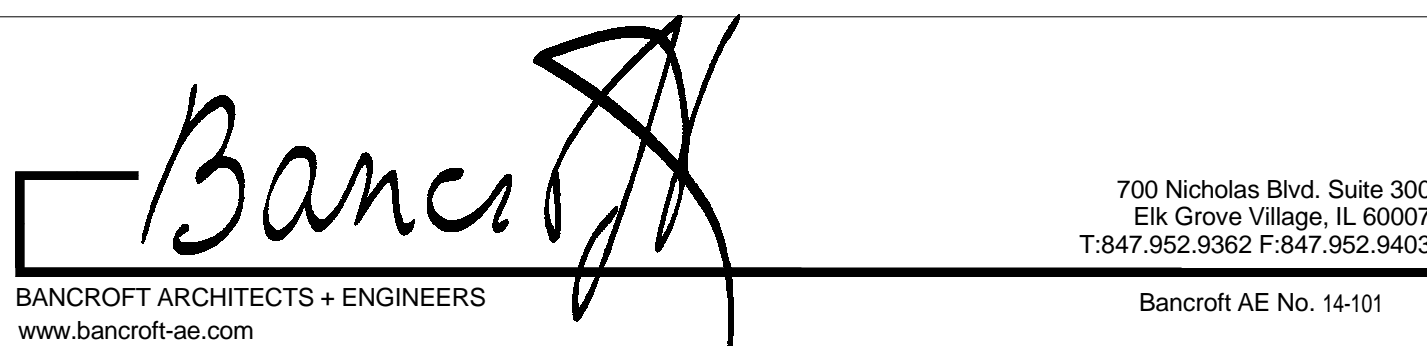
B0504 EC

VA CONTRACT NO. VA69D-15-J-1908

CONSULTANTS:

FINAL CONSTRUCTION DOCUMENT BID SET	01/13/2017
95% CONSTRUCTION DOCUMENT SUBMITTAL	10/13/2016
65% CONSTRUCTION DOCUMENT SUBMITTAL	08/02/2016
35% SCHEMATIC DESIGN SUBMITTAL	04/28/2016
Revisions:	Date

ARCHITECT/ENGINEERS:



Drawing Title
ROOM B0504 EC - ELECTRICAL
CONSTRUCTION PLAN

Approved: Project Director
-
VAPAHCS PLANNING AND ENGINEERING

Project Title
UPGRADE W PANELS

Location
5000 W. NATIONAL AVE.
MILWAUKEE, WI 53295

Date
01/13/2017

Checked
LF

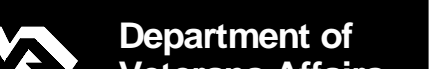
Drawn
AG AB EM

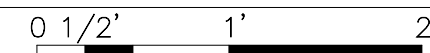
Project Number
695-16-108

Building Number
111

Drawing Number
E-104

Office of
Construction
and Facilities
Management



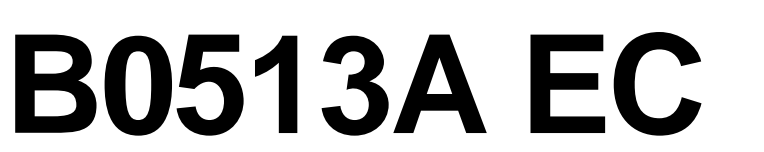


B0513A EC

Project Number 695-16-108
Building Number 111
Drawing Number ED-105



- ## ELECTRICAL KEYED NOTES
-
1. UL-B05-2 UL-B05-3:
FURNISH AND INSTALL PANELBOARD,
84 CIRCUIT PANELBOARD.
 2. FURNISH AND INSTALL METAL PULL BOX AT PANEL BOARD TOP
SECTION FOR ROUTING OF BRANCH CIRCUIT WIRING.
 3. EXISTING METAL CONDUITS THAT ARE ROUTED DOWN AND INTO EXISTING
CONCRETE SLAB ARE SCHEDULED TO REMAIN.
 4. FURNISH AND INSTALL ENCLOSED CIRCUIT BREAKER.
 5. FURNISH AND INSTALL FEEDER CONDUIT, CABLING AND ENCLOSED
CIRCUIT BREAKER.



FINAL CONSTRUCTION DOCUMENT BID SET	01/13/2017
95% CONSTRUCTION DOCUMENT SUBMITTAL	10/13/2016
65% CONSTRUCTION DOCUMENT SUBMITTAL	08/02/2016
35% SCHEMATIC DESIGN SUBMITTAL	04/28/2016
Revisions:	Date

ARCHITECT/ENGINEERS:

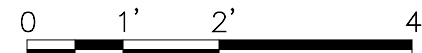
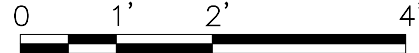
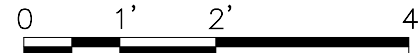
Approved: Project Director

-

-

VAPAHCS PLANNING AND ENGINEERING

Department of
Veterans Affairs

 Department of
Veterans Affairs

- ED-106