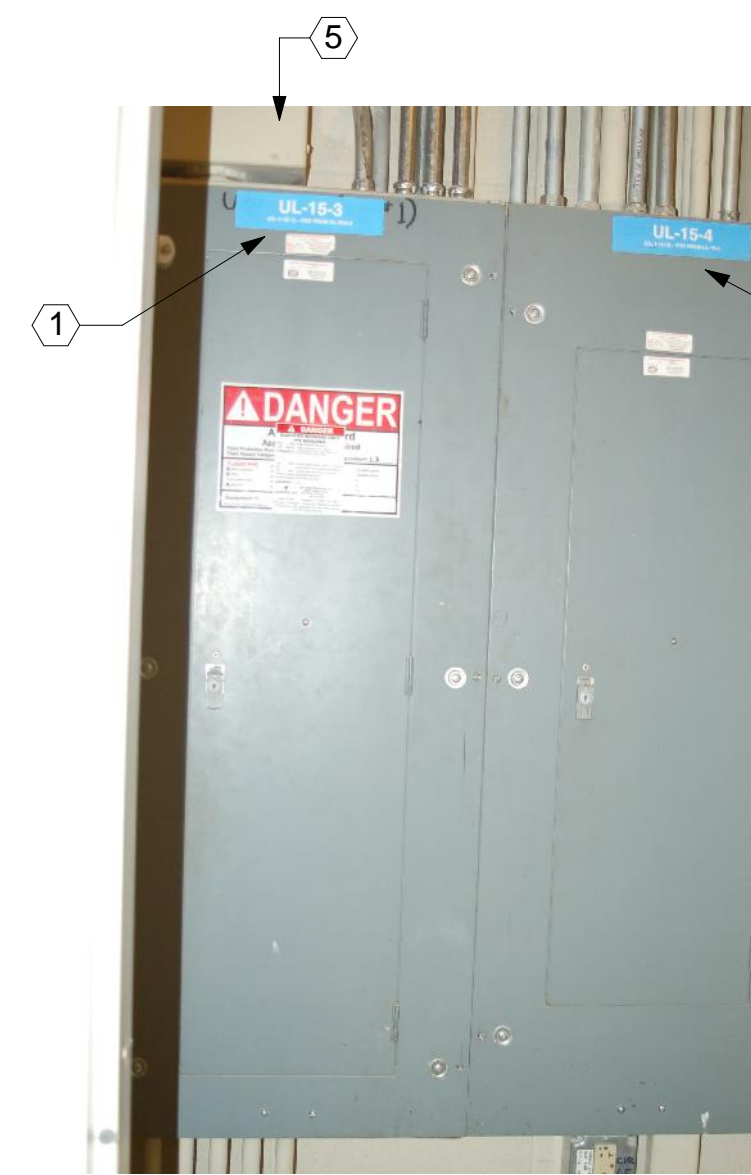
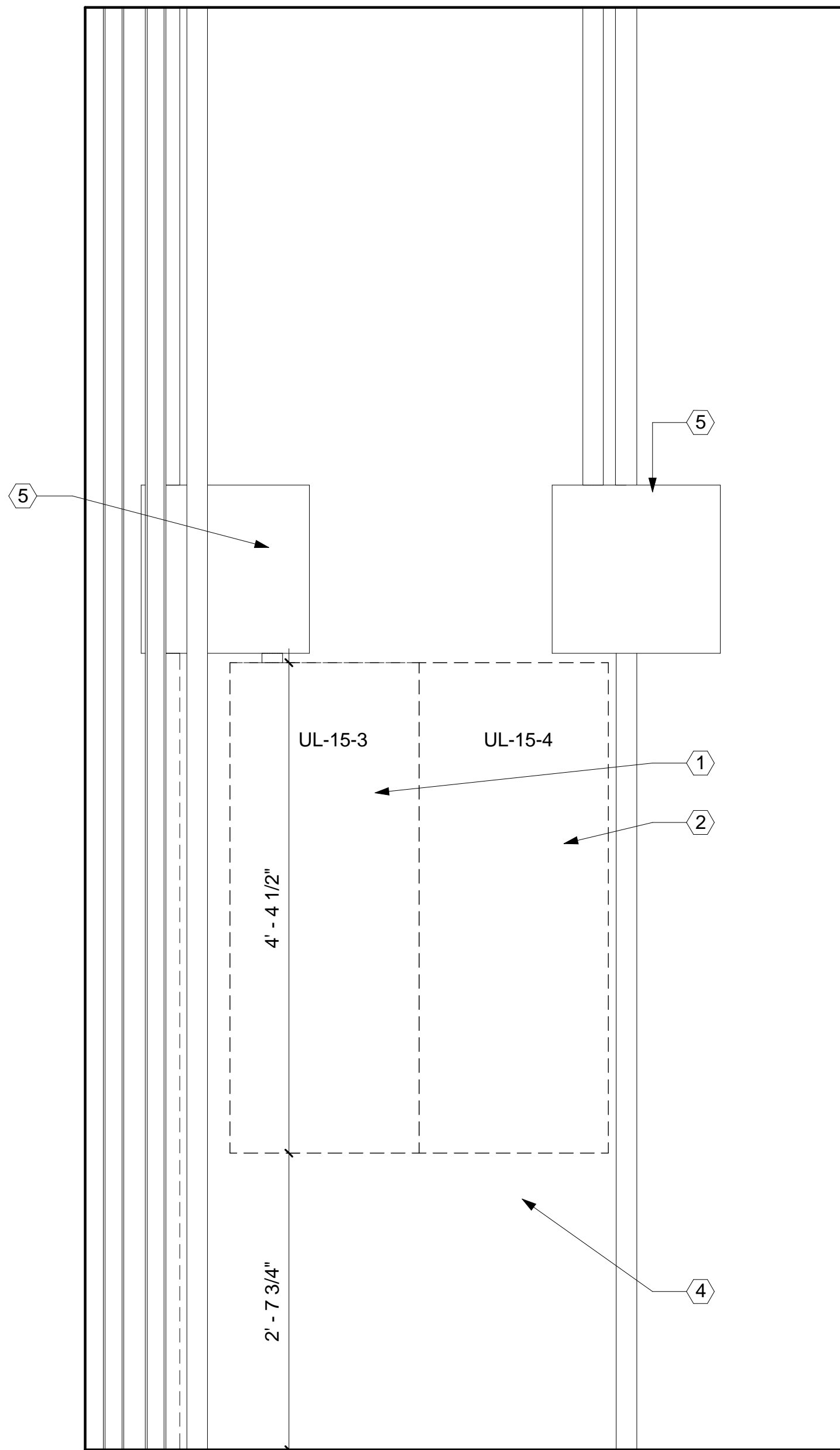
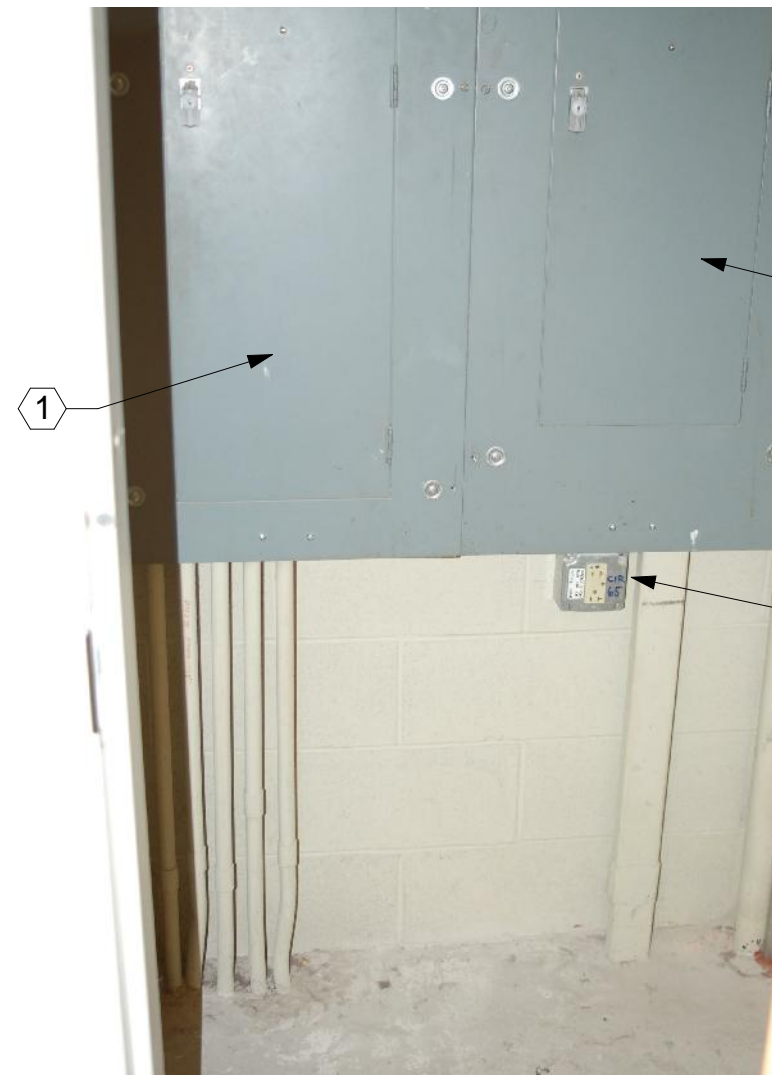


FINAL CONSTRUCTION DOCUMENT (CD) BID SET





**P1** 1523A EC - PHOTO 1  
NOT TO SCALE



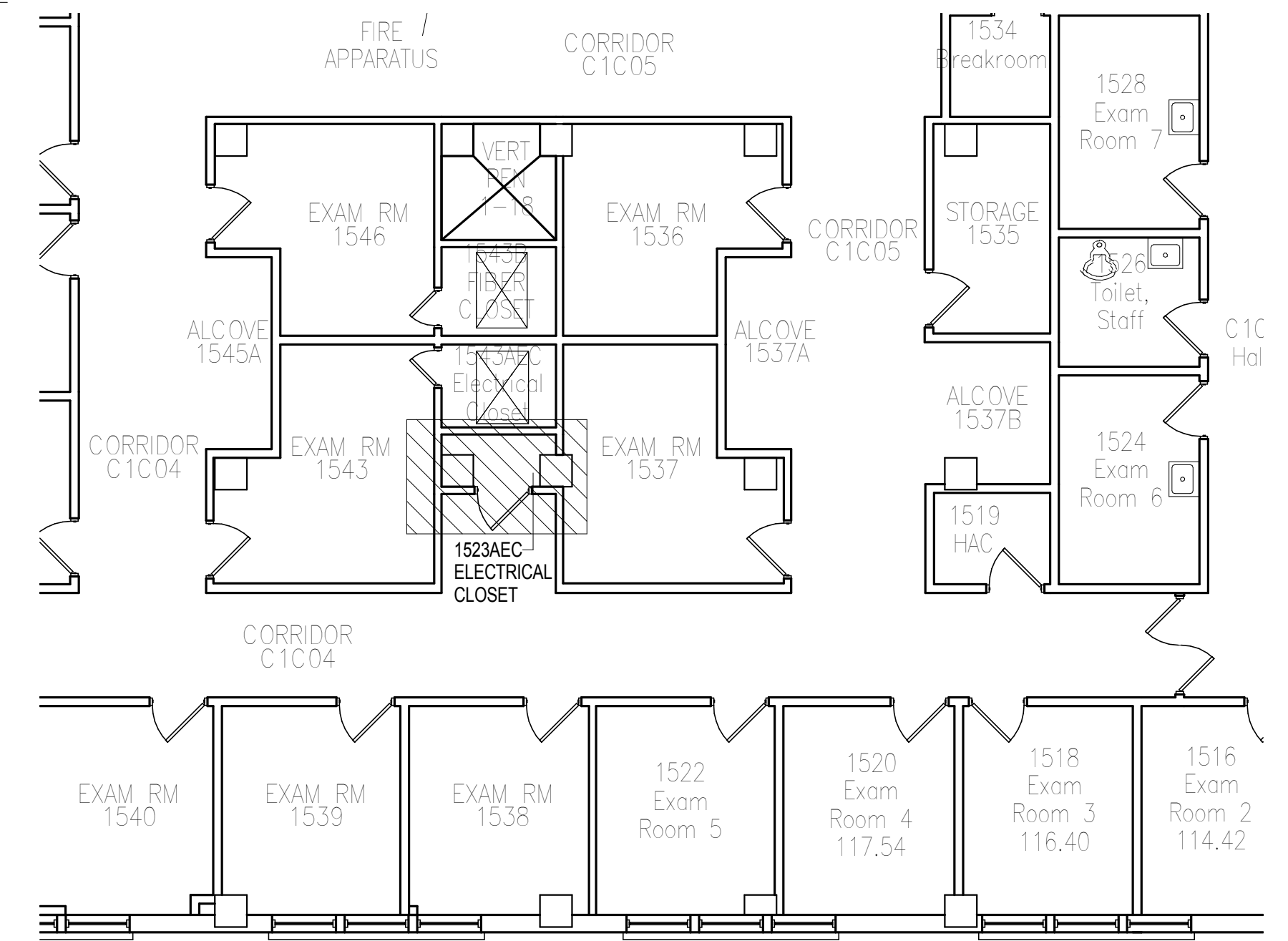
**P2** **1523A EC - PHOTO 2**  
NOT TO SCALE



**P3** 1523A EC - PHOTO 3  
NOT TO SCALE



**P4** 1523A EC - PHOTO 4  
NOT TO SCALE



 PLAN NORTH
  **KEY PLAN 1523A EC DEMOLITION**  
 NOT TO SCALE

**1523A EC**

Office of  
Construction  
and Facilities  
Management



**C 1523A EC - DEMOLITION ELEVATION C**

**A 1523A EC - DEMOLITION ELEVATION A**  
1" = 1'-0" 0 1/2' 1' 2'

**B** 1523A EC - DEMOLITION ELEVATION B

**P3** **1523A EC - PHOTO 3**  
NOT TO SCALE

**P4** **1523A EC - PHOTO 4**  
NOT TO SCALE

VA CONTRACT NO. VA69D-15-J-1908

CONSULTANTS:

ARCHITECT/ENGINEERS:

Drawing Title  
ROOM 1523A EC - ELECTRICAL  
DEMOLITION PLAN

Approved: Project Director  
-  
-  
VAPAHCS PLANNING AND ENGINEERING

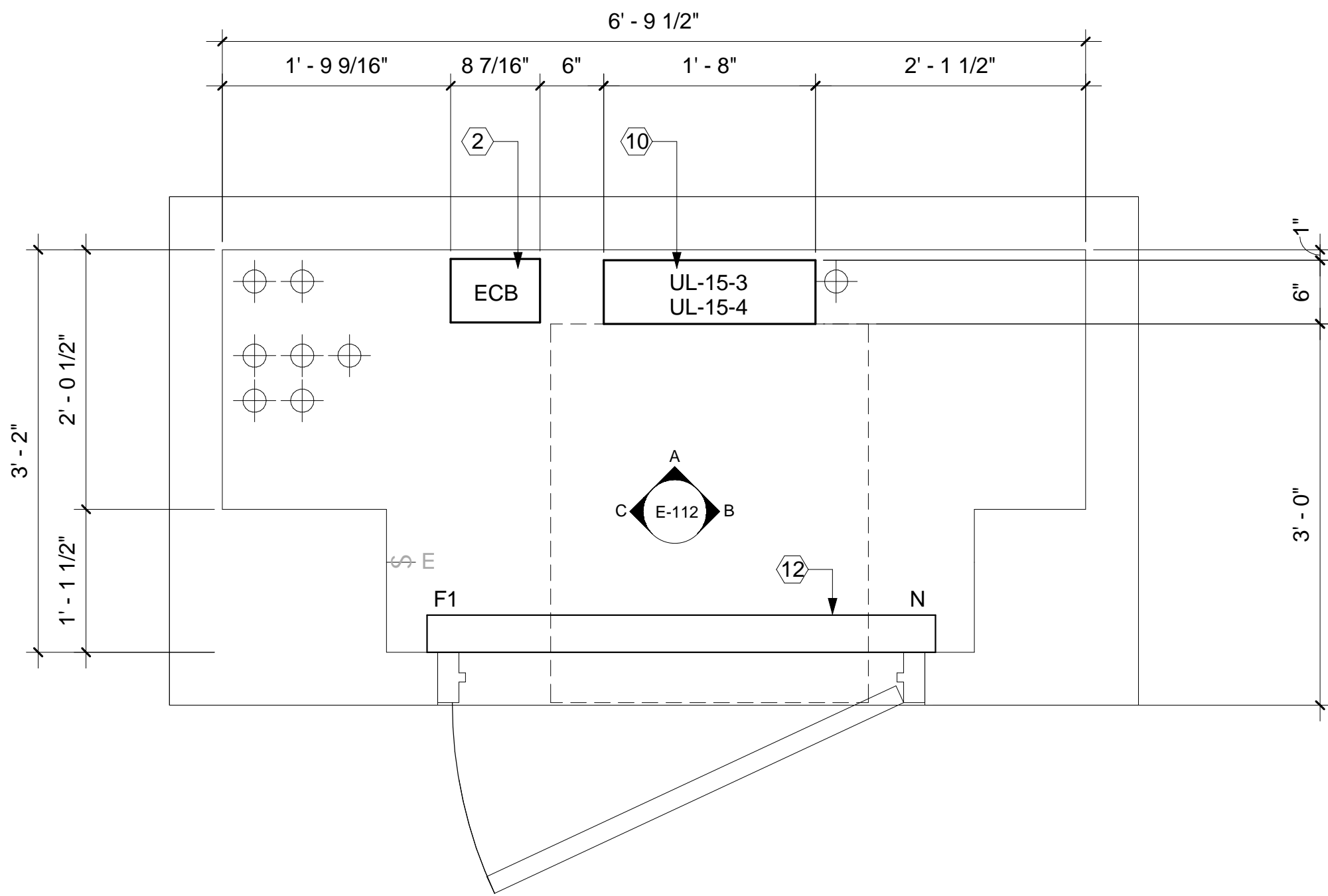
Project Title	UPGRADE W PANELS
---------------	------------------

Location	5000 W. NATIONAL AVE MILWAUKEE, WI 53295
Date	01/13/2017

Project Number 695-16-108
Building Number 111

ED-112



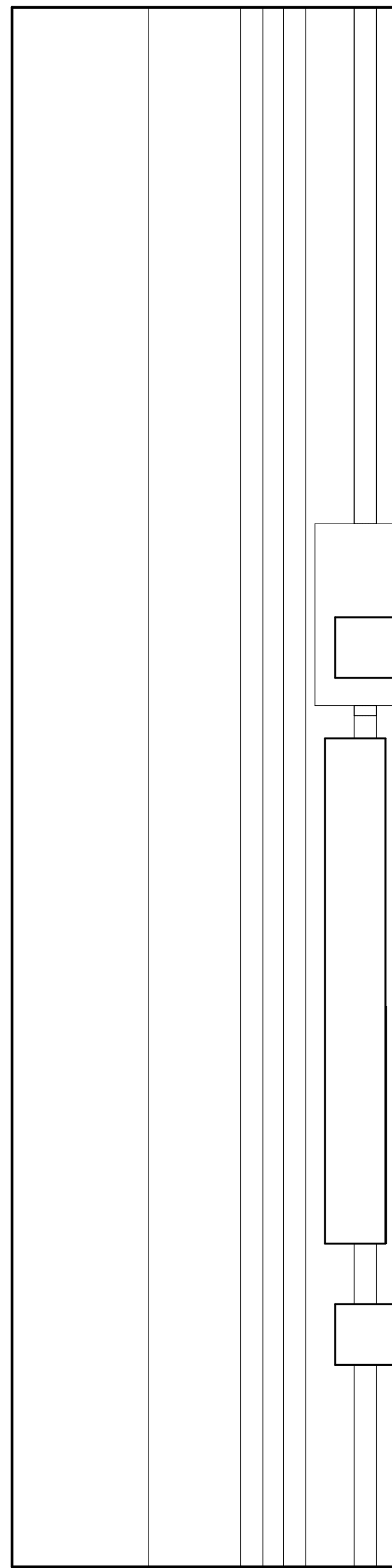


1

### FIRST FLOOR LEVEL - 1523A EC - CONSTRUCTION PLAN

1" = 1'-0"

0 1/2' 1' 2'



C

### 1523A EC - CONSTRUCTION ELEVATION C

1" = 1'-0"

0 1/2' 1' 2'

A

### 1523A EC - CONSTRUCTION ELEVATION A

1" = 1'-0"

0 1/2' 1' 2'

B

### 1523A EC - CONSTRUCTION ELEVATION B

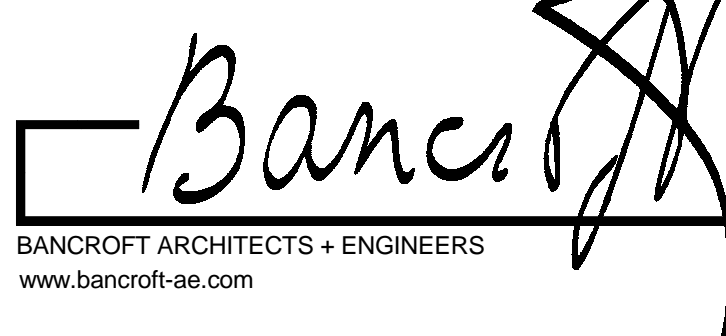
1" = 1'-0"

0 1/2' 1' 2'

VA CONTRACT NO. VA69D-15-J-1908

CONSULTANTS:

ARCHITECT/ENGINEERS:



700 Nicholas Blvd., Suite 300  
Elk Grove Village, IL 60007  
T: 847.952.9362 F: 847.952.9403

Bancroft AE No. 14-101

Drawing Title  
ROOM 1523A EC - ELECTRICAL  
CONSTRUCTION PLAN

Approved: Project Director  
-  
VAPAHCS PLANNING AND ENGINEERING

Project Title  
UPGRADE W PANELS

Location  
5000 W. NATIONAL AVE.  
MILWAUKEE, WI 53295

Date  
01/13/2017

Checked  
LF

Drawn  
AG AB EM

Project Number  
695-16-108

Building Number  
111

Drawing Number  
E-112

Office of  
Construction  
and Facilities  
Management



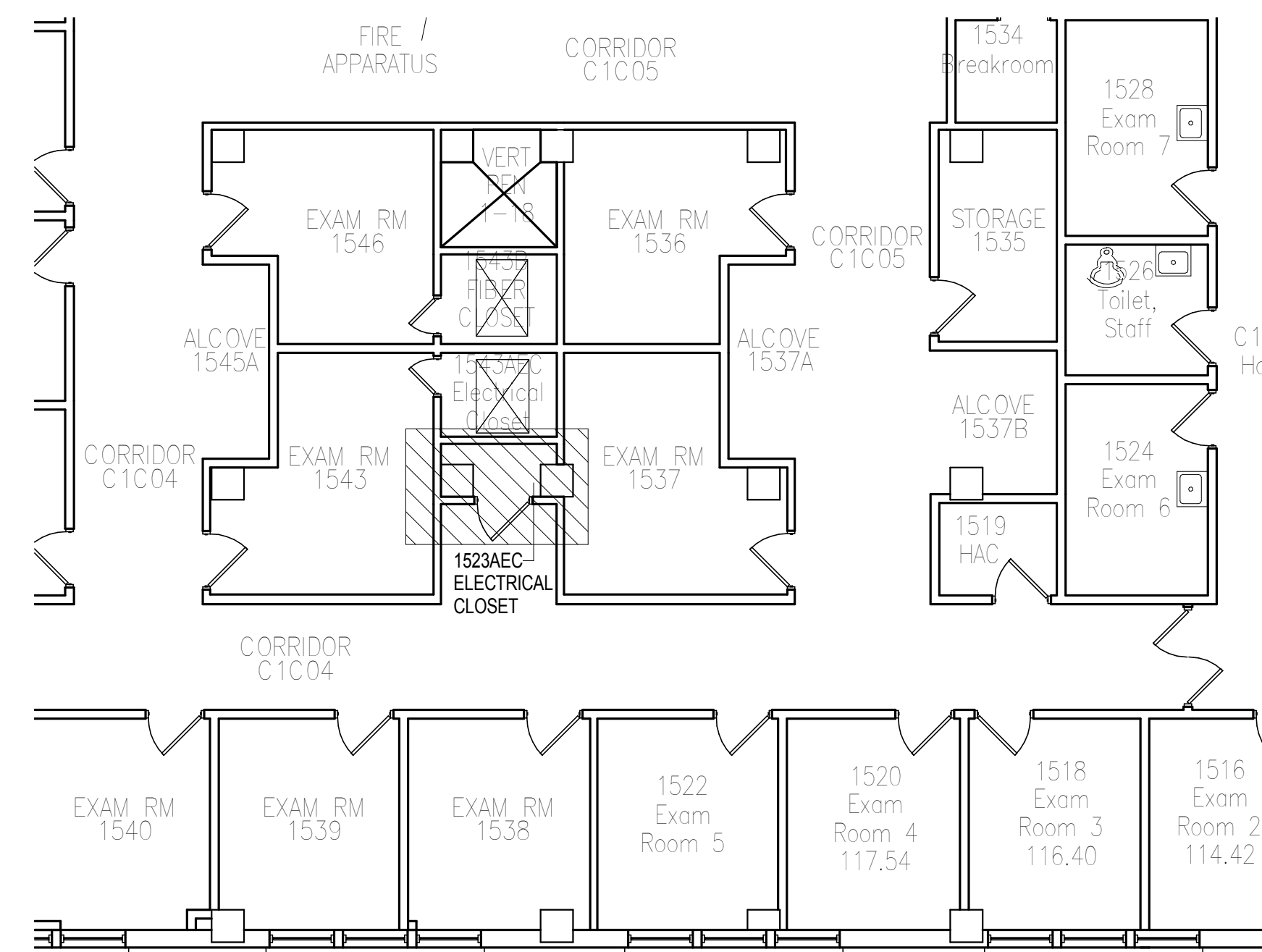
## GENERAL NOTES

- REFER TO ARCHITECTURAL CONSTRUCTION DRAWINGS FOR ADDITIONAL INFORMATION.
- REFER TO DRAWING E-601 FOR TYPICAL NEW PANELBOARD DETAILS.
- REFER TO DRAWING E-602 FOR TYPICAL NEW ENCLOSED CIRCUIT BREAKER DETAILS.



## ELECTRICAL KEYED NOTES

- FURNISH AND INSTALL FEEDER CONDUIT AND CABLING. CONNECT FEEDER CABLES TO EXISTING RISER CABLE AT METAL PULL BOX LOCATION.
- FURNISH AND INSTALL CONDUITS, CABLING AND ENCLOSED CIRCUIT BREAKER.
- FURNISH AND INSTALL METAL RACEWAY/PULL BOX AT PANELBOARD TOP SECTION.
- FURNISH AND INSTALL METAL RACEWAY/PULL BOX AT PANELBOARD BOTTOM SECTION.
- CONNECT EXISTING CONDUITS AT PANELBOARD TOP SECTION INTO METAL RACEWAY/PULL BOX.
- CONNECT EXISTING CONDUITS AT PANELBOARD BOTTOM SECTION INTO METAL RACEWAY/PULL BOX.
- FURNISH AND INSTALL CONDUITS FROM TOP AND BOTTOM METAL RACEWAYS/PULL BOXES AND CONNECT TO PANELBOARDS.
- FURNISH AND INSTALL BRANCH WIRING FOR BRANCH CIRCUITS THAT ARE ROUTED AT PANELBOARD TOP SECTIONS. FURNISH AND INSTALL WIRE SPLICING OF EXISTING AND NEW WIRES WITHIN THE METAL RACEWAY/PULL BOX.
- FURNISH AND INSTALL BRANCH WIRING FOR BRANCH CIRCUITS THAT ARE ROUTED AT PANELBOARD BOTTOM SECTIONS. FURNISH AND INSTALL WIRE SPLICING OF EXISTING AND NEW WIRES WITHIN METAL RACEWAY/PULL BOX.
- UL-15-3 UL-15-4:  
FURNISH AND INSTALL PANELBOARD, 84 CIRCUIT PANELBOARD.
- FURNISH AND INSTALL DUPLEX GFI OUTLET, CONDUIT AND WIRING. REFER TO DRAWING E-601 FOR NOTES REGARDING GFI OUTLET MOUNTING LOCATION.
- FURNISH AND INSTALL SURFACE MOUNTED LIGHT FIXTURE.

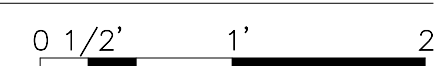


2

### KEY PLAN 1523A EC

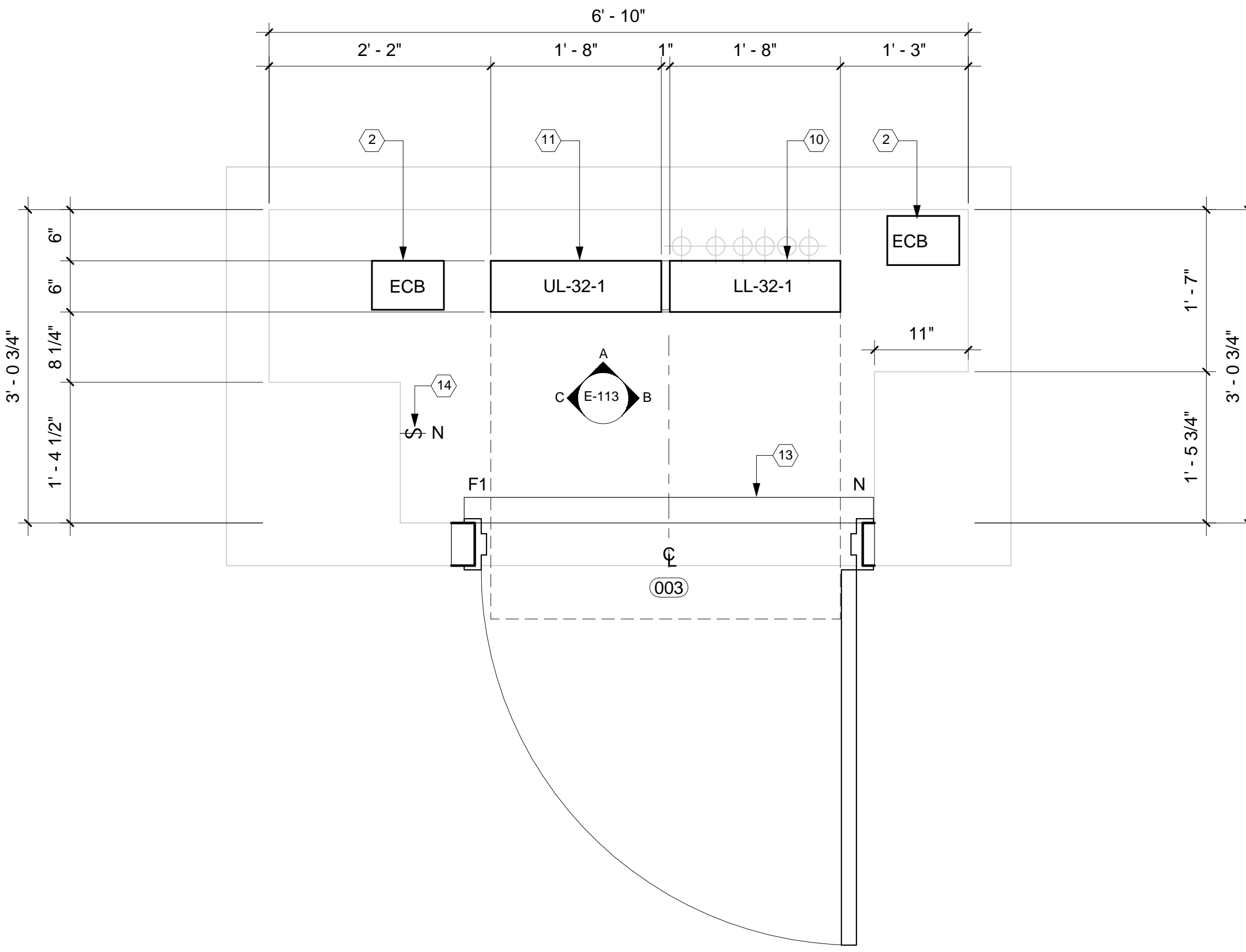
NOT TO SCALE

# 1523A EC

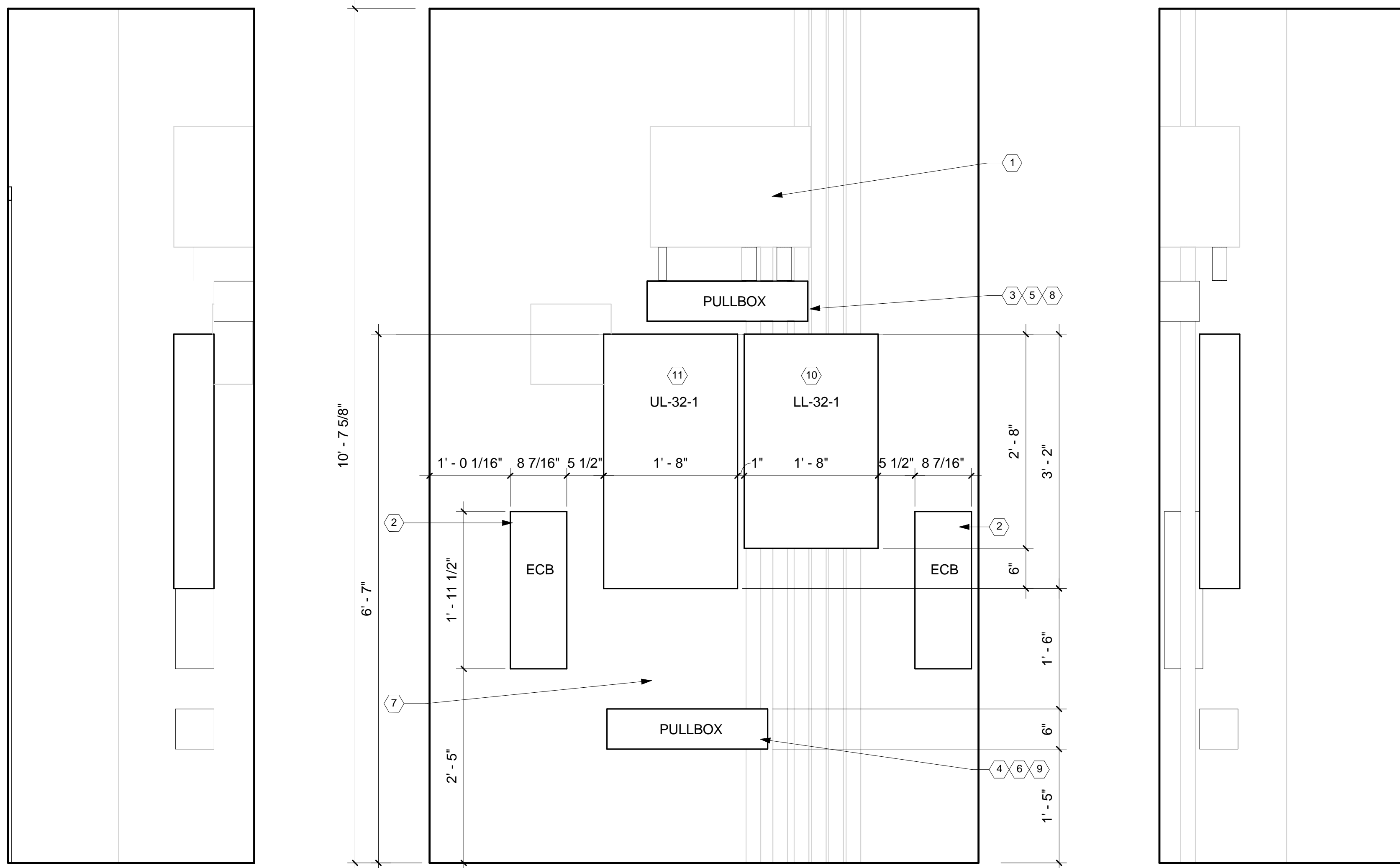




one eighth inch = one foot  
one quarter inch = one foot  
three eighths inch = one foot  
one half inch = one foot  
three quarters inch = one foot  
one inch = one foot  
one and one half inches = one foot  
two inches = one foot  
three inches = one foot  
four inches = one foot  
five inches = one foot  
six inches = one foot  
seven inches = one foot  
eight inches = one foot  
nine inches = one foot  
ten inches = one foot  
eleven inches = one foot  
twelve inches = one foot  
thirteen inches = one foot  
fourteen inches = one foot  
fifteen inches = one foot  
sixteen inches = one foot  
seventeen inches = one foot  
eighteen inches = one foot  
nineteen inches = one foot  
twenty inches = one foot  
twenty one inches = one foot  
twenty two inches = one foot  
twenty three inches = one foot  
twenty four inches = one foot  
twenty five inches = one foot  
twenty six inches = one foot  
twenty seven inches = one foot  
twenty eight inches = one foot  
twenty nine inches = one foot  
thirty inches = one foot  
thirty one inches = one foot  
thirty two inches = one foot  
thirty three inches = one foot  
thirty four inches = one foot  
thirty five inches = one foot  
thirty six inches = one foot  
thirty seven inches = one foot  
thirty eight inches = one foot  
thirty nine inches = one foot  
forty inches = one foot  
forty one inches = one foot  
forty two inches = one foot  
forty three inches = one foot  
forty four inches = one foot  
forty five inches = one foot  
forty six inches = one foot  
forty seven inches = one foot  
forty eight inches = one foot  
forty nine inches = one foot  
fifty inches = one foot  
fifty one inches = one foot  
fifty two inches = one foot  
fifty three inches = one foot  
fifty four inches = one foot  
fifty five inches = one foot  
fifty six inches = one foot  
fifty seven inches = one foot  
fifty eight inches = one foot  
fifty nine inches = one foot  
sixty inches = one foot  
sixty one inches = one foot  
sixty two inches = one foot  
sixty three inches = one foot  
sixty four inches = one foot  
sixty five inches = one foot  
sixty six inches = one foot  
sixty seven inches = one foot  
sixty eight inches = one foot  
sixty nine inches = one foot  
seventy inches = one foot  
seventy one inches = one foot  
seventy two inches = one foot  
seventy three inches = one foot  
seventy four inches = one foot  
seventy five inches = one foot  
seventy six inches = one foot  
seventy seven inches = one foot  
seventy eight inches = one foot  
seventy nine inches = one foot  
eighty inches = one foot  
eighty one inches = one foot  
eighty two inches = one foot  
eighty three inches = one foot  
eighty four inches = one foot  
eighty five inches = one foot  
eighty six inches = one foot  
eighty seven inches = one foot  
eighty eight inches = one foot  
eighty nine inches = one foot  
ninety inches = one foot  
ninety one inches = one foot  
ninety two inches = one foot  
ninety three inches = one foot  
ninety four inches = one foot  
ninety five inches = one foot  
ninety six inches = one foot  
ninety seven inches = one foot  
ninety eight inches = one foot  
ninety nine inches = one foot  
one hundred inches = one foot



1 THIRD FLOOR LEVEL - 3218 EC - CONSTRUCTION PLAN  
1" = 1'-0"



C ROOM 3218 EC - CONSTRUCTION ELEVATION C  
1" = 1'-0"

A ROOM 3218 EC - CONSTRUCTION ELEVATION A  
1" = 1'-0"

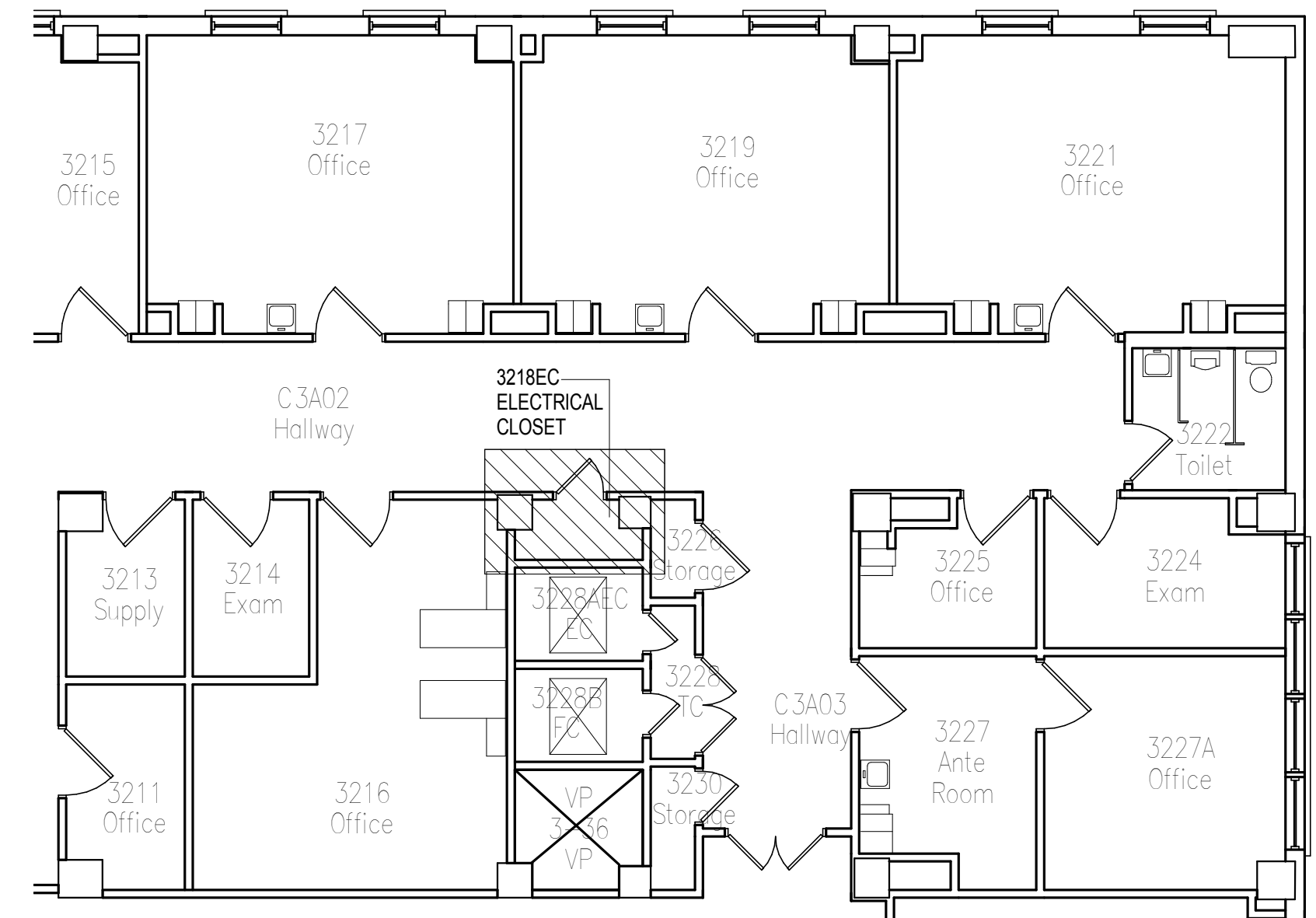
B ROOM 3218 EC - CONSTRUCTION ELEVATION B  
1" = 1'-0"

## GENERAL NOTES

- REFER TO ARCHITECTURAL CONSTRUCTION DRAWINGS FOR ADDITIONAL INFORMATION.
- REFER TO DRAWING E-601 FOR TYPICAL NEW PANELBOARD DETAILS.
- REFER TO DRAWING E-602 FOR TYPICAL NEW ENCLOSED CIRCUIT BREAKER DETAILS.

## ELECTRICAL KEYED NOTES

- FURNISH AND INSTALL FEEDER CONDUIT AND CABLING. CONNECT FEEDER CABLES TO EXISTING RISER CABLE AT METAL PULL BOX LOCATION.
- FURNISH AND INSTALL CONDUITS, CABLING AND ENCLOSED CIRCUIT BREAKER.
- FURNISH AND INSTALL METAL RACEWAY/PULL BOX AT PANELBOARD TOP SECTION.
- FURNISH AND INSTALL METAL RACEWAY/PULL BOX AT PANELBOARD BOTTOM SECTION.
- CONNECT EXISTING CONDUITS AT PANELBOARD TOP SECTION INTO METAL RACEWAY/PULL BOX.
- CONNECT EXISTING CONDUITS AT PANELBOARD BOTTOM SECTION INTO METAL RACEWAY/PULL BOX.
- FURNISH AND INSTALL CONDUITS FROM TOP AND BOTTOM METAL RACEWAYS/PULL BOXES AND CONNECT TO PANELBOARDS.
- FURNISH AND INSTALL BRANCH WIRING FOR BRANCH CIRCUITS THAT ARE ROUTED AT PANELBOARD TOP SECTIONS. FURNISH AND INSTALL WIRE SPLICING OF EXISTING AND NEW WIRES WITHIN THE METAL RACEWAY/PULL BOX.
- FURNISH AND INSTALL BRANCH WIRING FOR BRANCH CIRCUITS THAT ARE ROUTED AT PANELBOARD BOTTOM SECTIONS. FURNISH AND INSTALL WIRE SPLICING OF EXISTING AND NEW WIRES WITHIN METAL RACEWAY/PULL BOX.
- LL-32-1: FURNISH AND INSTALL PANELBOARD, 30 CIRCUIT PANELBOARD.
- UL-32-1: FURNISH AND INSTALL PANELBOARD, 42 CIRCUIT PANELBOARD.
- FURNISH AND INSTALL DUPLEX GFI OUTLET, CONDUIT AND WIRING. REFER TO DRAWING E-601 FOR NOTES REGARDING GFI OUTLET MOUNTING LOCATION.
- FURNISH AND INSTALL SURFACE MOUNTED LIGHT FIXTURE.
- FURNISH AND INSTALL SURFACE MOUNTED CONDUIT AND JUNCTION BOX FOR LIGHT SWITCH.



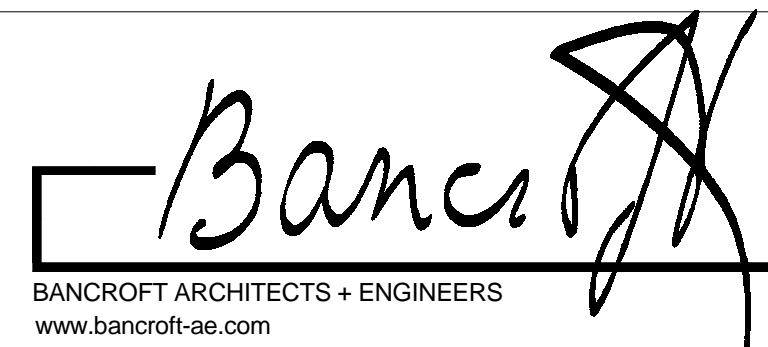
2 KEY PLAN 3218 EC  
NOT TO SCALE

## 3218 EC

VA CONTRACT NO. VA69D-15-J-1908


FINAL CONSTRUCTION DOCUMENT BID SET	01/13/2017
95% CONSTRUCTION DOCUMENT SUBMITTAL	10/13/2016
65% CONSTRUCTION DOCUMENT SUBMITTAL	08/02/2016
35% SCHEMATIC DESIGN SUBMITTAL	04/28/2016
Revisions:	Date

CONSULTANTS:
--------------

ARCHITECT/ENGINEERS:
 BANCROFT ARCHITECTS + ENGINEERS www.bancroft-ae.com
700 Nicholas Blvd. Suite 300 Eik Grove Village, IL 60007 T: 847.952.9362 F: 847.952.9403 Bancroft AE No. 14-101

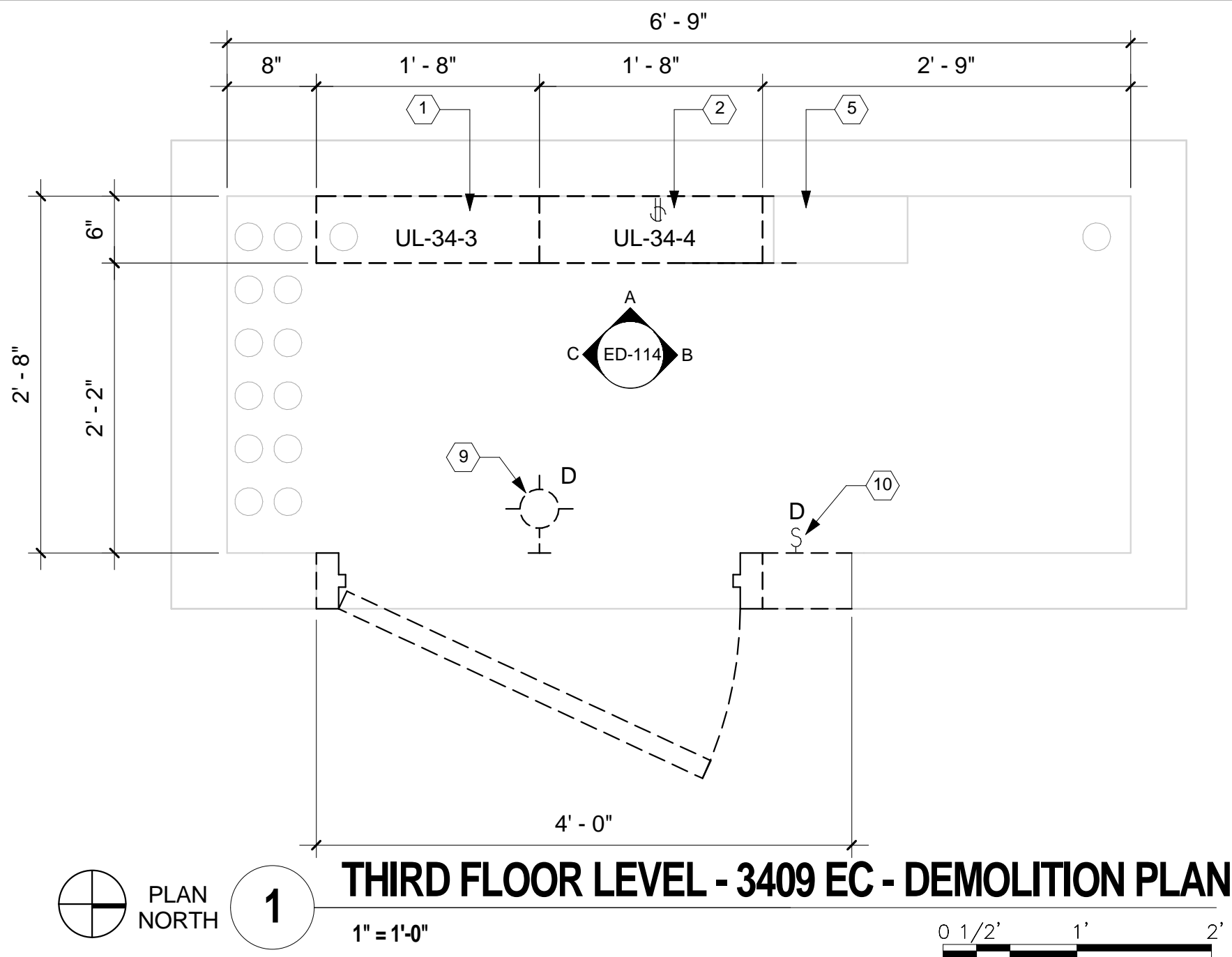
Drawing Title ROOM 3218 EC - ELECTRICAL CONSTRUCTION PLAN
Approved: Project Director - VAPAHCS PLANNING AND ENGINEERING

Project Title UPGRADE W PANELS
Location 5000 W. NATIONAL AVE. MILWAUKEE, WI 53295
Date 01/13/2017
Checked LF
Drawn AG AB EM

Project Number 695-16-108
Building Number 111
Drawing Number E-113
Office of Construction and Facilities Management 

three inches = one foot  
one and one half inches = one foot  
one inch = one foot  
three quarters inch = one foot  
one half inch = one foot  
three eighths inch = one foot  
one quarter inch = one foot  
one eighth inch = one foot  
one sixteenth inch = one foot

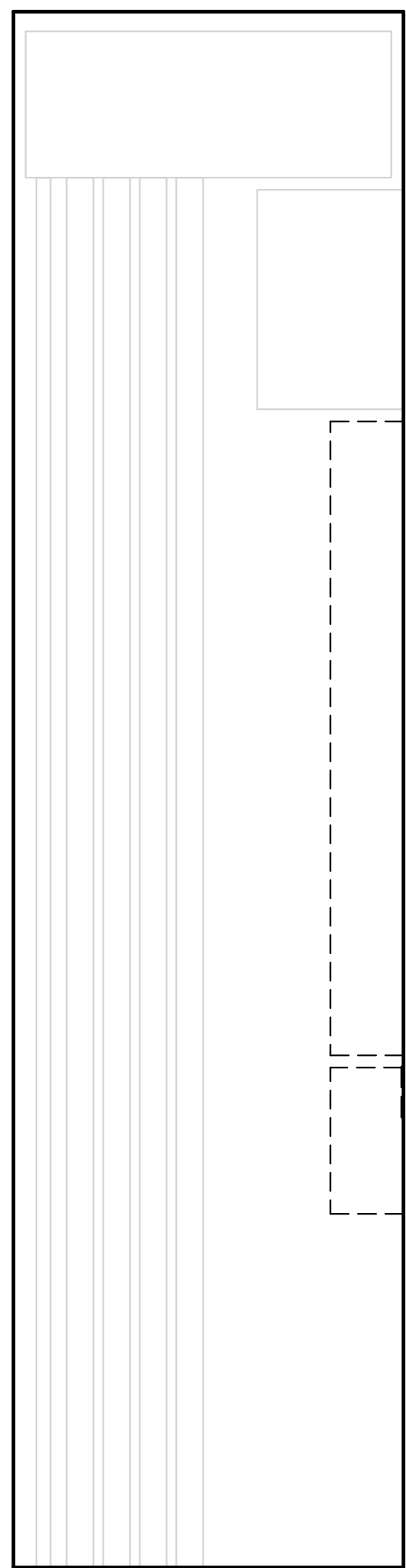
5/3/2017 2:22:02 PM  
C:\Users\aghighi\Documents\03 THIRD FLOOR LEVEL - ELECTRICAL\aghighi.dwg



1 THIRD FLOOR LEVEL - 3409 EC - DEMOLITION PLAN

1" = 1'-0"

0 1/2' 1' 2'



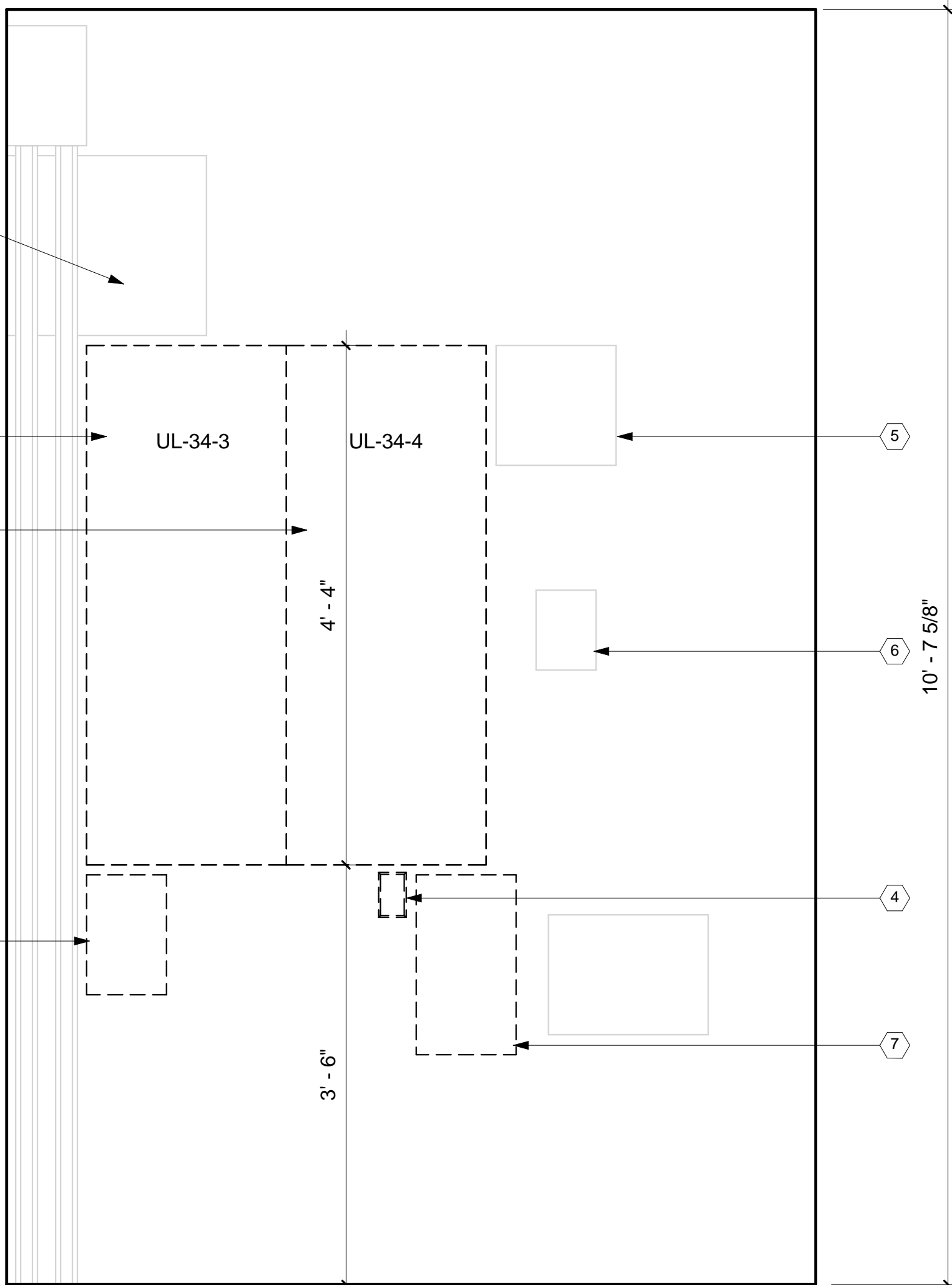
C ROOM 3409 EC - DEMOLITION ELEVATION C

1" = 1'-0"

0 1/2' 1' 2'



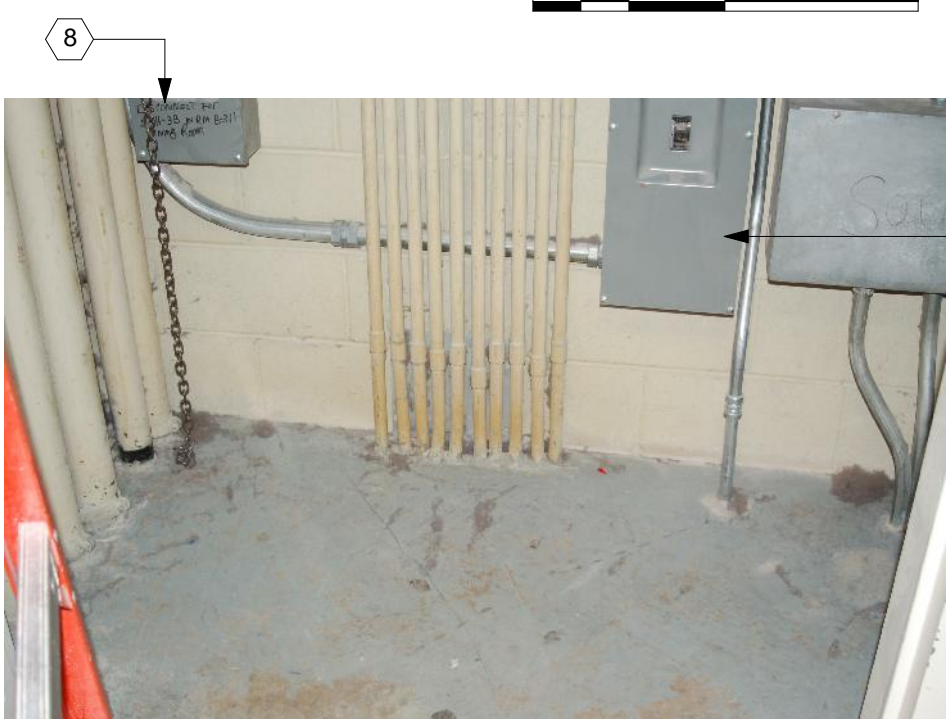
P1 3409 EC - PHOTO 1  
NOT TO SCALE



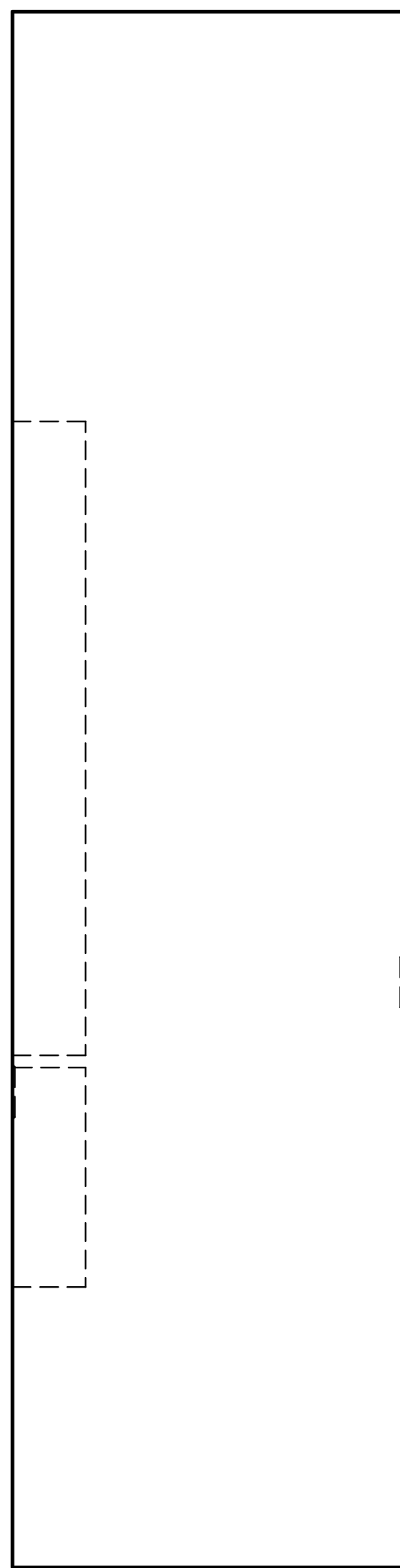
A ROOM 3409 EC - DEMOLITION ELEVATION A

1" = 1'-0"

0 1/2' 1' 2'



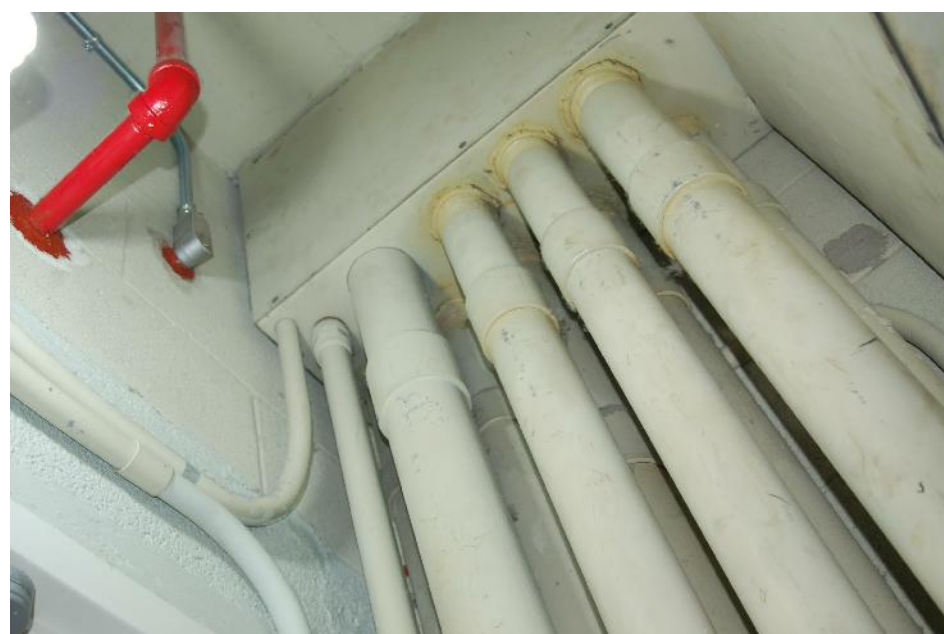
P2 3409 EC - PHOTO 2  
NOT TO SCALE



B ROOM 3409 EC - DEMOLITION ELEVATION B

1" = 1'-0"

0 1/2' 1' 2'



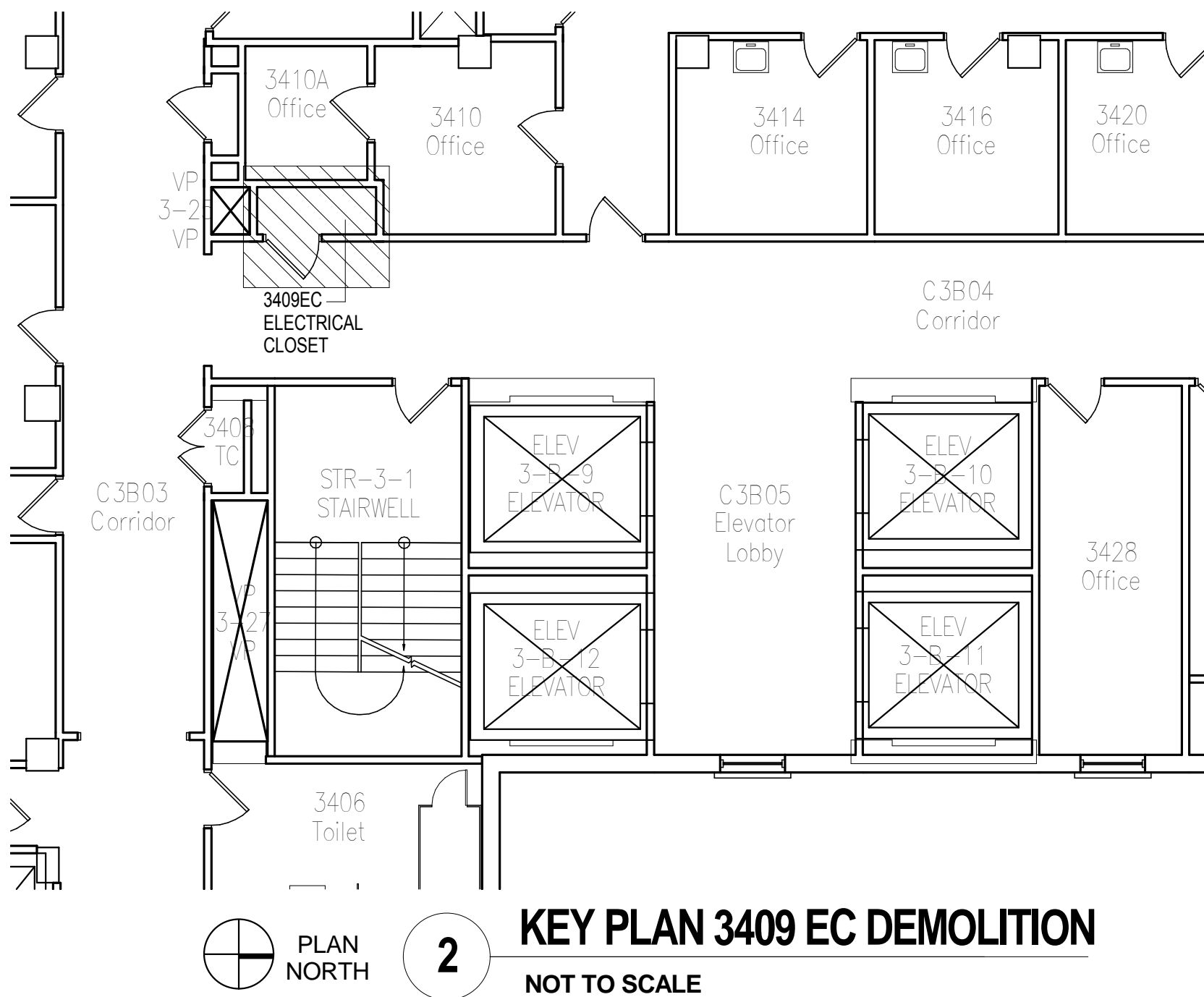
P3 3409 EC - PHOTO 3  
NOT TO SCALE

## GENERAL NOTES

- REFER TO DRAWING ED-601 FOR DEMOLITION DETAIL OF TYPICAL EXISTING PANELBOARD.
- REFER TO SPECIFICATIONS, VOLUME 2, APPENDIX B - PHOTO DOCUMENTATION - EXISTING ELECTRICAL CLOSETS FOR INTERIOR PHOTOS OF EXISTING PANELBOARDS.

## ELECTRICAL KEYED NOTES

- EXISTING PANELBOARD UL-34-3 TO BE DEMOLISHED. EXISTING PANELBOARD IS 42 CIRCUIT BOARD. DISCONNECT FEEDER CABLES AND RESPECTIVE CONDUITS. DISCONNECT BRANCH WIRING AND CONDUITS.
- EXISTING PANELBOARD UL-34-4 TO BE DEMOLISHED. EXISTING PANELBOARD IS 42 CIRCUIT BOARD. DISCONNECT FEEDER CABLES AND RESPECTIVE CONDUITS. DISCONNECT BRANCH WIRES AND CONDUITS.
- EXISTING PANELBOARD UL-34-3 AND UL-34-4 ARE SCHEDULED TO BE COMBINED INTO ONE NEW 84 CIRCUIT PANELBOARD.
- EXISTING DUPLEX OUTLET, CONDUIT AND WIRING TO BE REMOVED.
- EXISTING METAL RACEWAY/PULL BOX IS SCHEDULED TO REMAIN.
- EXISTING SURFACE MOUNTED TIME CLOCK (3RD FLOOR PUBLIC TV POWER CONTROLS) TO REMAIN.
- EXISTING DISCONNECT SWITCH FOR PANEL IN B-311 KITCHEN TO BE REMOVED AND RELOCATED.
- EXISTING DISCONNECT SWITCH FOR SAH-3B IN ROOM B-311 DINING ROOM TO REMAIN.
- DEMOLISH EXISTING SURFACE MOUNTED LIGHT FIXTURE, WIRING, AND CONDUIT.
- DEMOLISH EXISTING SURFACE MOUNTED LIGHT SWITCH, WIRING, AND CONDUIT.



2 KEY PLAN 3409 EC DEMOLITION  
NOT TO SCALE

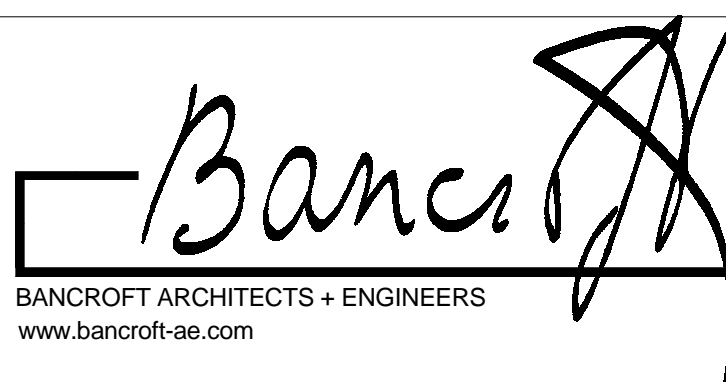
# 3409 EC

VA CONTRACT NO. VA69D-15-J-1908

FINAL CONSTRUCTION DOCUMENT BID SET	01/13/2017
95% CONSTRUCTION DOCUMENT SUBMITTAL	10/13/2016
65% CONSTRUCTION DOCUMENT SUBMITTAL	08/02/2016
35% SCHEMATIC DESIGN SUBMITTAL	04/28/2016
Revisions:	Date

CONSULTANTS:

ARCHITECT/ENGINEERS:



700 Nicholas Blvd. Suite 300  
Elk Grove Village, IL 60007  
T: 847.952.9362 F: 847.952.9403

Bancroft AE No. 14-101

Drawing Title  
ROOM 3409 EC - ELECTRICAL  
DEMOLITION PLAN

Approved: Project Director  
-  
VAPAHCS PLANNING AND ENGINEERING

Project Title  
UPGRADE W PANELS

Location  
5000 W. NATIONAL AVE.  
MILWAUKEE, WI 53295

Date  
01/13/2017

Checked  
LF

Drawn  
AG AB EM

Project Number  
695-16-108

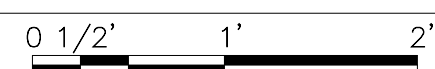
Building Number  
111

Drawing Number  
ED-114

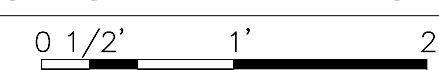
Office of  
Construction  
and Facilities  
Management



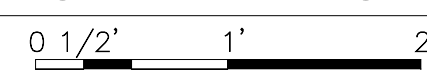




1" = 1'-0"



**A**  $1'' = 1'-0''$


$$1'' = 1' - 0'$$


**KEY PLAN**  
NOT TO SCALE

 Department of  
Veterans Affairs

1. FURNISH AND INSTALL FEEDER CONDUIT AND CABLING. CONNECT FEEDER CABLES TO EXISTING RISER CABLE AT METAL PULL BOX LOCATION.
2. FURNISH AND INSTALL CONDUITS, CABLING AND ENCLOSED CIRCUIT BREAKER.
3. FURNISH AND INSTALL METAL RACEWAY/PULL BOX AT PANELBOARD TOP SECTION.
4. FURNISH AND INSTALL METAL RACEWAY/PULL BOX AT PANELBOARD BOTTOM SECTION.
5. CONNECT EXISTING CONDUITS AT PANELBOARD TOP SECTION INTO METAL RACEWAY/PULL BOX.
6. CONNECT EXISTING CONDUITS AT PANELBOARD BOTTOM SECTION INTO METAL RACEWAY/PULL BOX.
7. FURNISH AND INSTALL CONDUITS FROM TOP AND BOTTOM METAL RACEWAYS/PULL BOXES AND CONNECT TO PANELBOARDS.
8. FURNISH AND INSTALL BRANCH WIRING FOR BRANCH CIRCUITS THAT ARE ROUTED AT PANELBOARD TOP SECTIONS. FURNISH AND INSTALL WIRE SPLICING OF EXISTING AND NEW WIRES WITHIN THE METAL RACEWAY/PULL BOX.
9. FURNISH AND INSTALL BRANCH WIRING FOR BRANCH CIRCUITS THAT ARE ROUTED AT PANELBOARD BOTTOM SECTIONS. FURNISH AND INSTALL WIRE SPLICING OF EXISTING AND NEW WIRES WITHIN METAL RACEWAY/PULL BOX.
10. UL-34-3 UL-34-4: FURNISH AND INSTALL PANELBOARD, 84 CIRCUIT PANELBOARD.
11. FURNISH AND INSTALL DUPLEX GFI OUTLET, CONDUIT AND WIRING. REFER TO DRAWING E-601 FOR NOTES REGARDING GFI OUTLET MOUNTING LOCATION.
12. RELOCATE EXISTING DISCONNECT SWITCH FOR PANEL IN B-311 KITCHEN.
13. FURNISH AND INSTALL SURFACE MOUNTED CONDUIT AND JUNCTION BOX FOR LIGHT SWITCH.
14. FURNISH AND INSTALL SURFACE MOUNTED LIGHT FIXTURE.



**KEY PLAN**  
NOT TO SCALE

 Department of  
Veterans Affairs

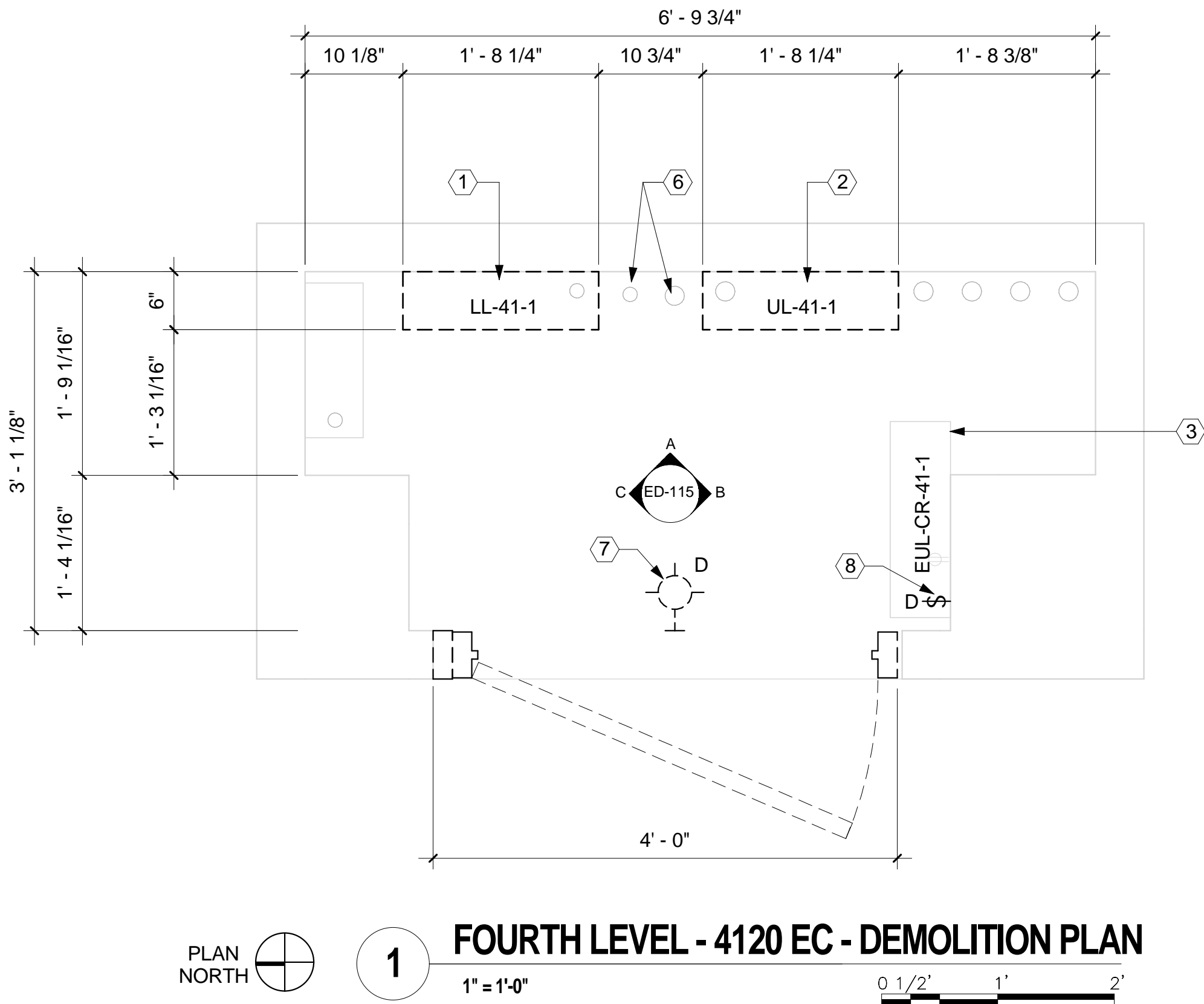
FINAL CONSTRUCTION DOCUMENT (CD) BID SET

GENERAL NOTES

1. REFER TO DRAWING ED-601 FOR DEMOLITION DETAIL OF TYPICAL EXISTING PANELBOARD.
2. REFER TO SPECIFICATIONS, VOLUME 2, APPENDIX B - PHOTO DOCUMENTATION - EXISTING ELECTRICAL CLOSETS FOR INTERIOR PHOTOS OF EXISTING PANELBOARDS.

ELECTRICAL KEYED NOTES

1. EXISTING PANELBOARD LL-41-1 TO BE DEMOLISHED. EXISTING PANELBOARD IS 24 CIRCUIT PANELBOARD. DISCONNECT FEEDER CABLES AND RESPECTIVE CONDUITS. DISCONNECT BRANCH WIRING AND CONDUITS.
2. EXISTING PANELBOARD UL-41-1 TO BE DEMOLISHED. EXISTING PANELBOARD IS 42 CIRCUIT PANELBOARD. REPLACEMENT PANEL BOARD TO BE A RETROFIT STYLE.
3. EXISTING PANELBOARD EUL-CR-41-1 IS SCHEDULED TO REMAIN.
4. EXISTING DUPLEX OUTLET TO BE DEMOLISHED.
5. EXISTING METAL RACEWAY/PULL BOX TO REMAIN.
6. EXISTING CONDUITS TO REMAIN.
7. DEMOLISH EXISTING SURFACE MOUNTED LIGHT FIXTURE, WIRING, AND CONDUIT.
8. DEMOLISH EXISTING SURFACE MOUNTED LIGHT SWITCH, WIRING, AND CONDUIT.



FOURTH LEVEL - 4120 EC - DEMOLITION PLAN

1" = 1'-0"



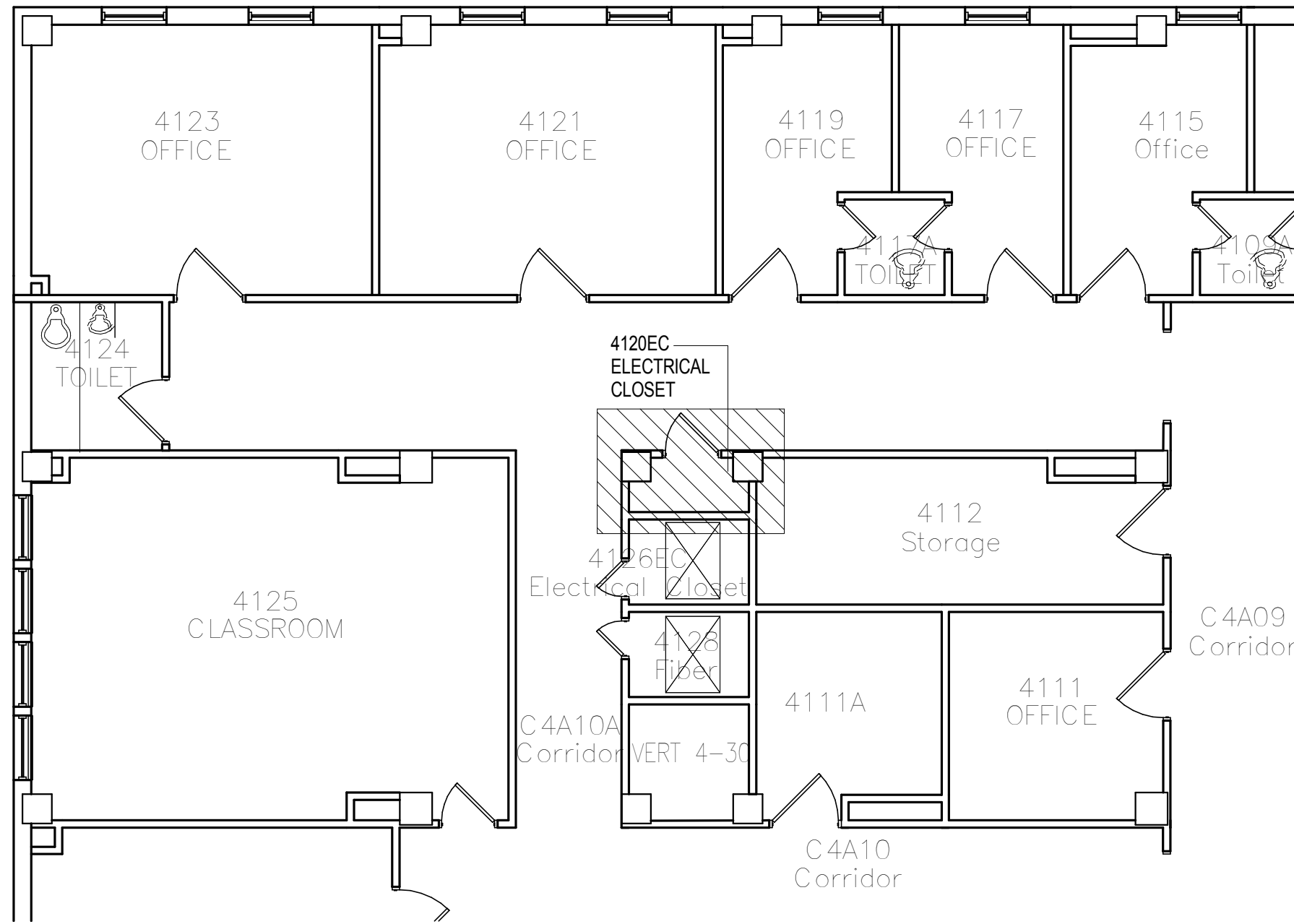
4120 EC - PHOTO 1  
NOT TO SCALE



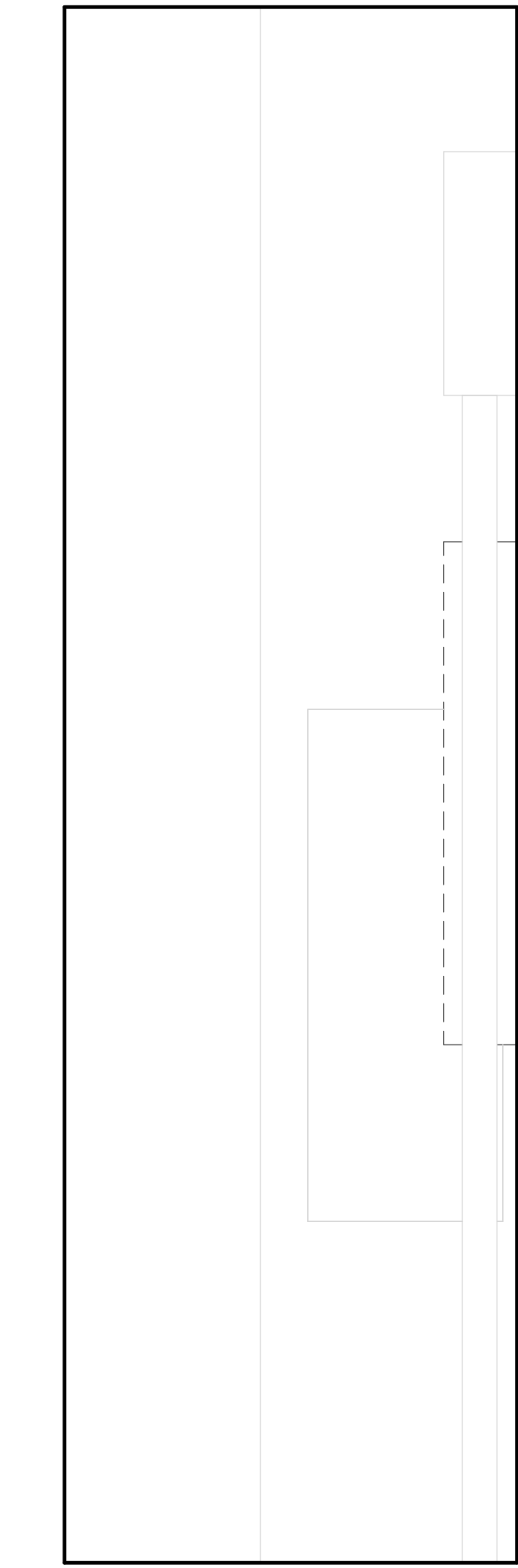
4120 EC - PHOTO 2  
NOT TO SCALE



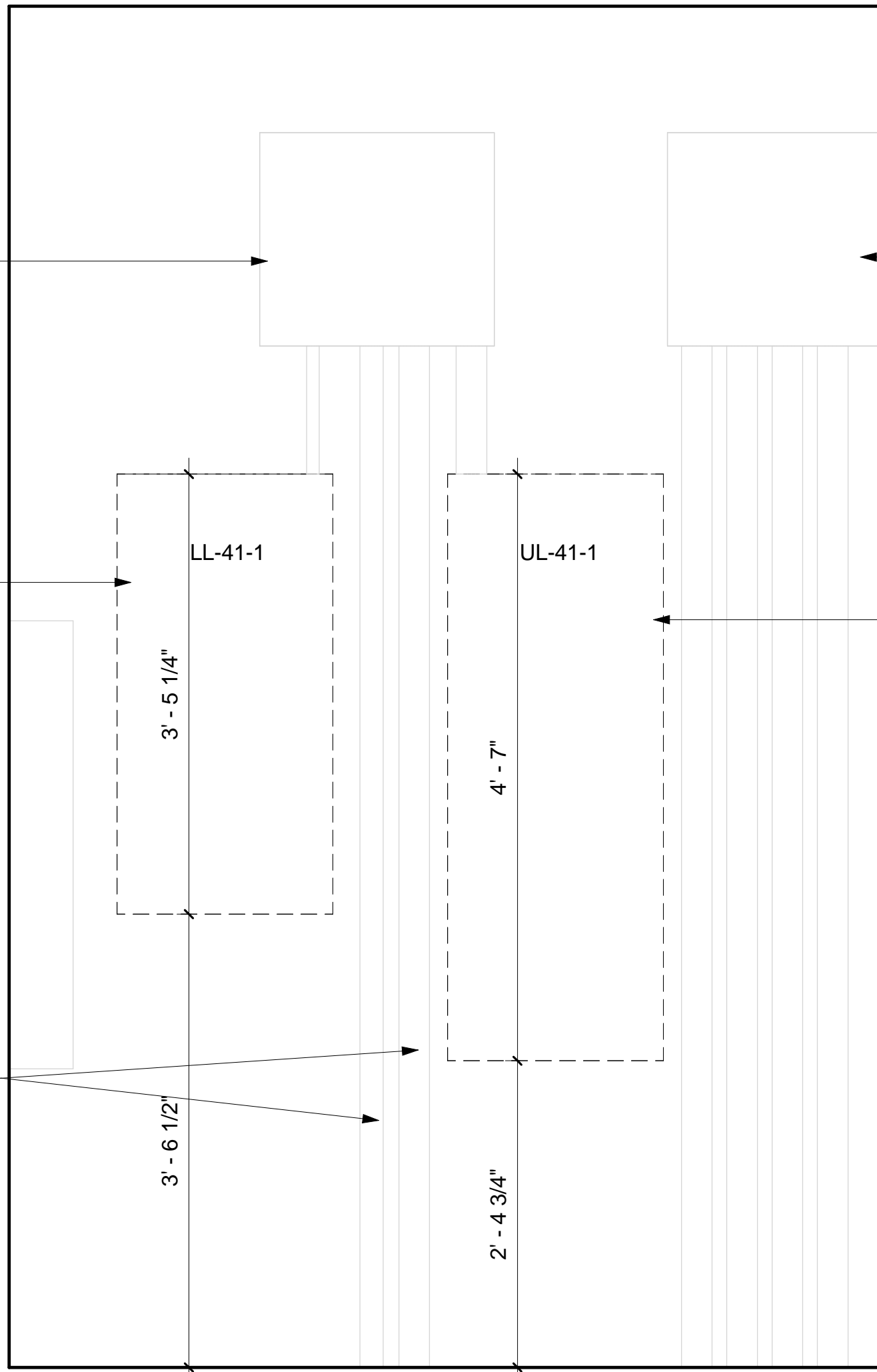
4120 EC - PHOTO 3  
NOT TO SCALE



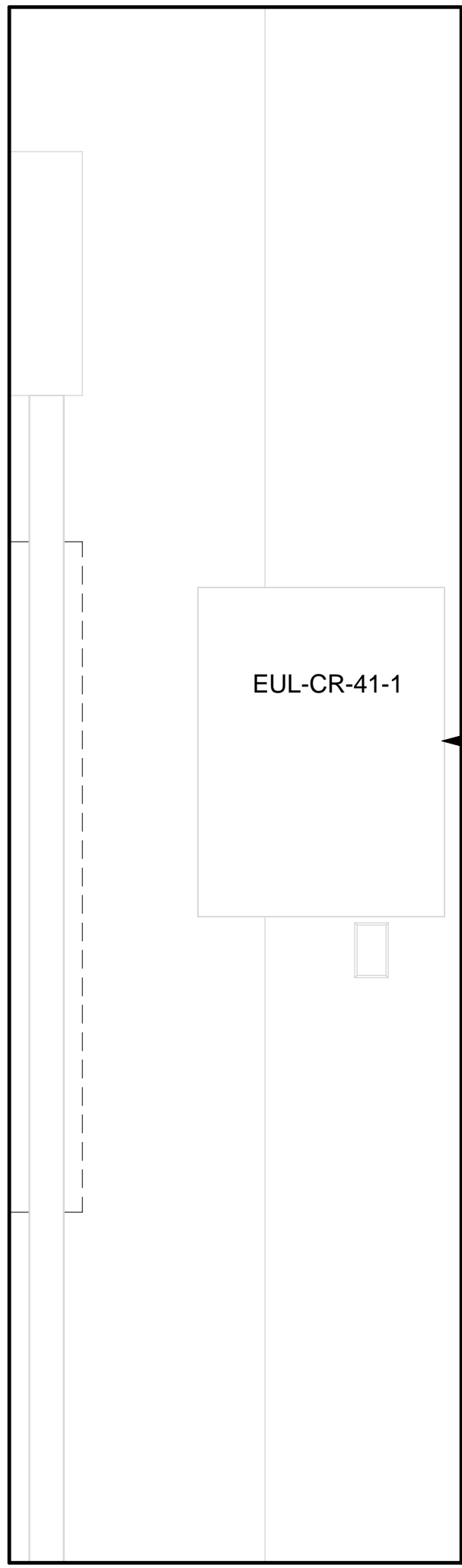
KEY PLAN 4120 EC DEMOLITION  
NOT TO SCALE



4120 EC - DEMOLITION ELEVATION C  
1" = 1'-0"



4120 EC - DEMOLITION ELEVATION A  
1" = 1'-0"



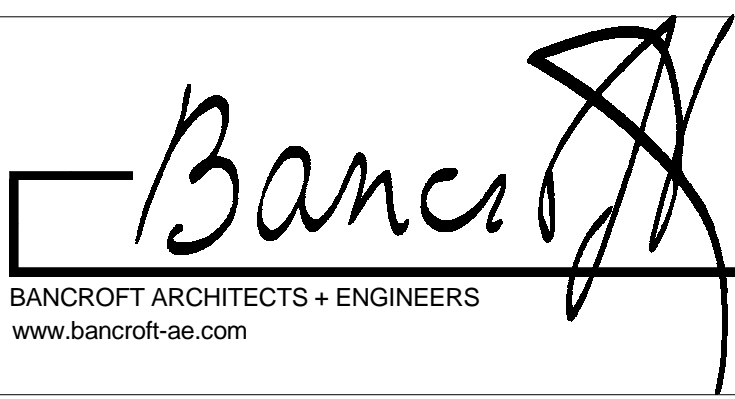
4120 EC - DEMOLITION ELEVATION B  
1" = 1'-0"

VA CONTRACT NO. VA69D-15-J-1908

FINAL CONSTRUCTION DOCUMENT BID SET	01/13/2017
95% CONSTRUCTION DOCUMENT SUBMITTAL	10/13/2016
65% CONSTRUCTION DOCUMENT SUBMITTAL	08/02/2016
35% SCHEMATIC DESIGN SUBMITTAL	04/28/2016
Revisions:	Date

CONSULTANTS:

ARCHITECT/ENGINEERS:



Drawing Title  
ROOM 4120 EC - ELECTRICAL  
DEMOLITION PLAN

Approved: Project Director  
-  
VAPAHCS PLANNING AND ENGINEERING

Project Title  
UPGRADE W PANELS

Location  
5000 W. NATIONAL AVE.  
MILWAUKEE, WI 53295

Date  
01/13/2017

Checked  
LF

Drawn  
AG AB EM

Project Number  
695-16-108

Building Number  
111

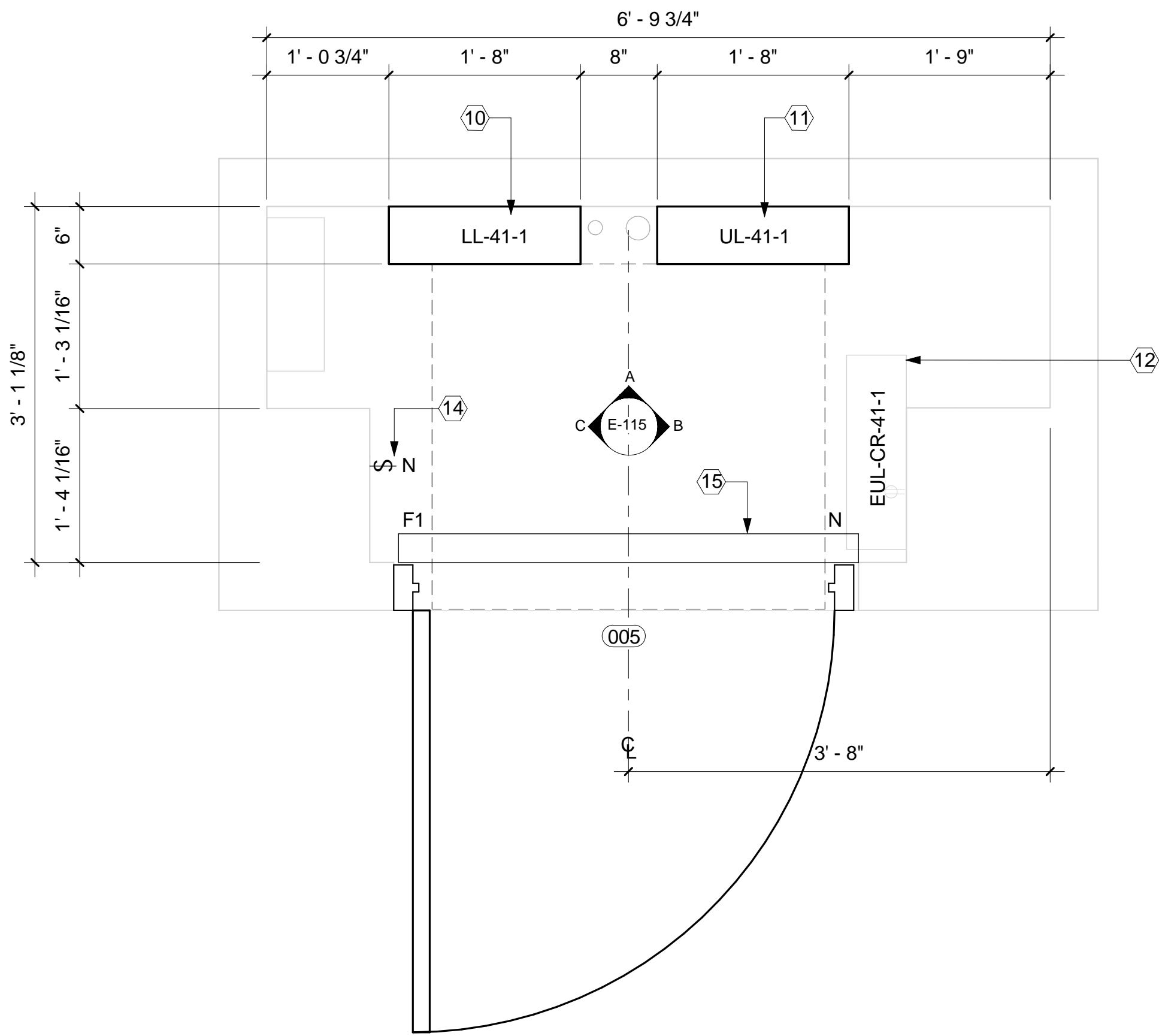
Drawing Number  
ED-115

Office of  
Construction  
and Facilities  
Management

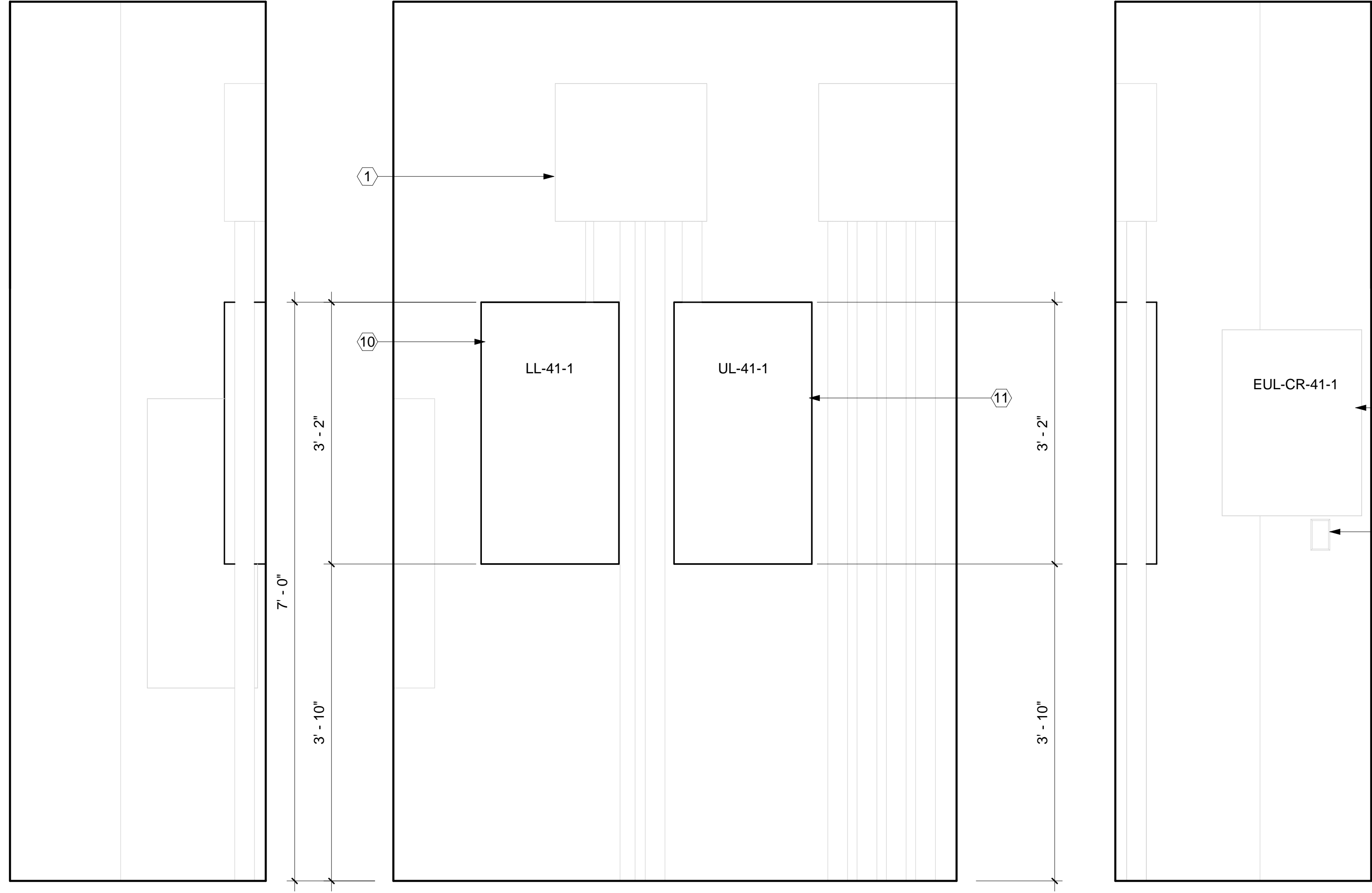


4120 EC





1 FOURTH LEVEL - 4120 EC - CONSTRUCTION PLAN  
1" = 1'-0"



C 4120 EC - CONSTRUCTION ELEVATION C  
1" = 1'-0"

A 4120 EC - CONSTRUCTION ELEVATION A  
1" = 1'-0"

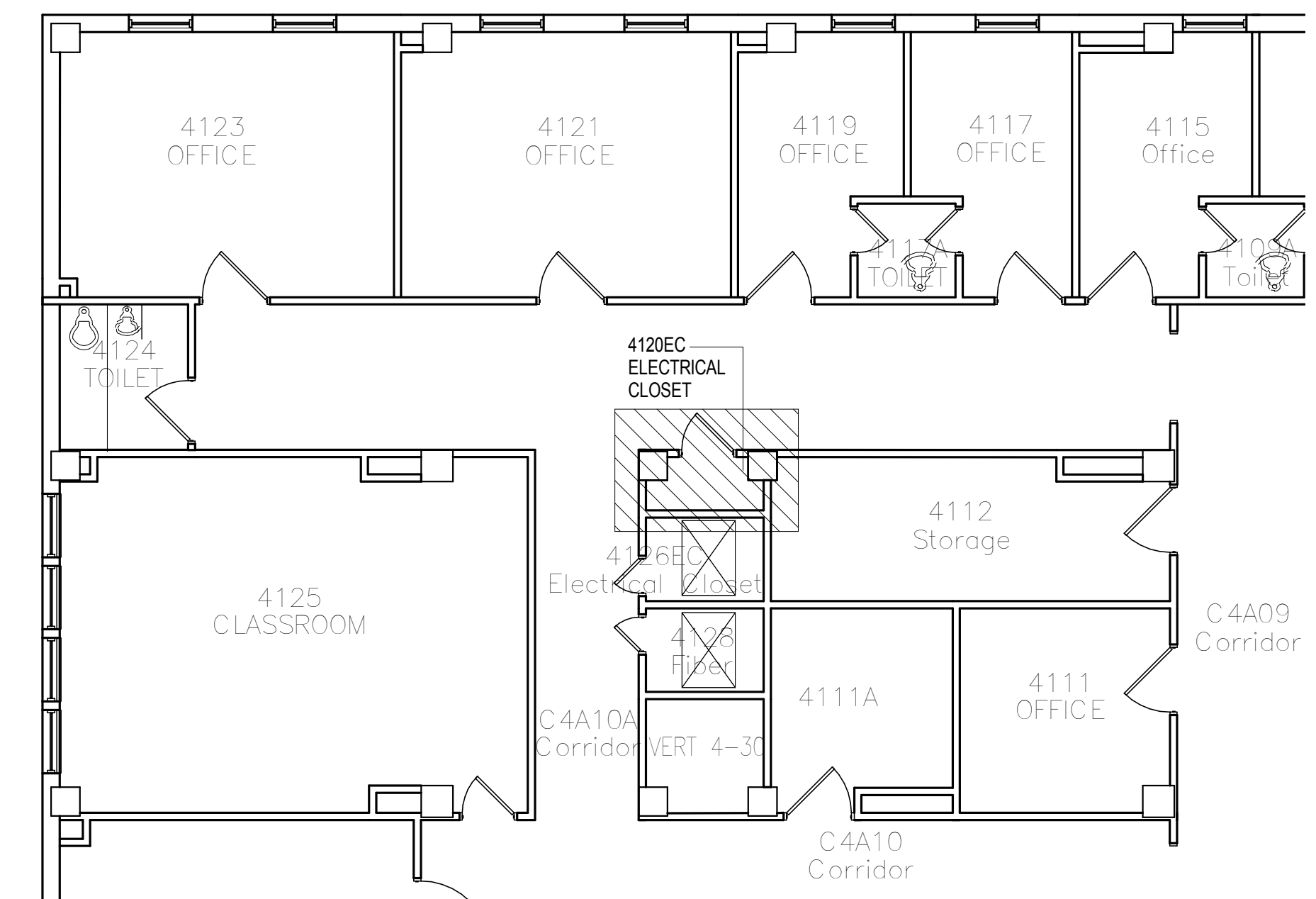
B 4120 EC - CONSTRUCTION ELEVATION B  
1" = 1'-0"

## GENERAL NOTES

- REFER TO ARCHITECTURAL CONSTRUCTION DRAWINGS FOR ADDITIONAL INFORMATION.
- REFER TO DRAWING E-601 FOR TYPICAL NEW PANELBOARD DETAILS.
- REFER TO DRAWING E-602 FOR TYPICAL NEW ENCLOSED CIRCUIT BREAKER DETAILS.

## ELECTRICAL KEYED NOTES

- FURNISH AND INSTALL FEEDER CONDUIT AND CABLING. CONNECT FEEDER CABLES TO EXISTING RISER CABLE AT METAL PULL BOX LOCATION.
- FURNISH AND INSTALL CONDUITS, CABLING AND ENCLOSED CIRCUIT BREAKER.
- FURNISH AND INSTALL METAL RACEWAY/PULL BOX AT PANELBOARD TOP SECTION.
- FURNISH AND INSTALL METAL RACEWAY/PULL BOX AT PANELBOARD BOTTOM SECTION.
- CONNECT EXISTING CONDUITS AT PANELBOARD TOP SECTION INTO METAL RACEWAY/PULL BOX.
- CONNECT EXISTING CONDUITS AT PANELBOARD BOTTOM SECTION INTO METAL RACEWAY/PULL BOX.
- FURNISH AND INSTALL CONDUITS FROM TOP AND BOTTOM METAL RACEWAYS/PULL BOXES AND CONNECT TO PANELBOARDS.
- FURNISH AND INSTALL BRANCH WIRING FOR BRANCH CIRCUITS THAT ARE ROUTED AT PANELBOARD TOP SECTIONS. FURNISH AND INSTALL WIRE SPLICING OF EXISTING AND NEW WIRES WITHIN THE METAL RACEWAY/PULL BOX.
- FURNISH AND INSTALL BRANCH WIRING FOR BRANCH CIRCUITS THAT ARE ROUTED AT PANELBOARD BOTTOM SECTIONS. FURNISH AND INSTALL WIRE SPLICING OF EXISTING AND NEW WIRES WITHIN METAL RACEWAY/PULL BOX.
- LL-41-1:  
FURNISH AND INSTALL PANELBOARD, 42 CIRCUIT PANELBOARD.
- UL-41-1:  
FURNISH AND INSTALL PANELBOARD, 42 CIRCUIT PANELBOARD.
- EXISTING PANELBOARD EUL-CR-41-1 IS SCHEDULED TO REMAIN.
- FURNISH AND INSTALL DUPLEX GFI OUTLET, CONDUIT AND WIRING. REFER TO DRAWING E-601 FOR NOTES REGARDING GFI OUTLET MOUNTING LOCATION.
- FURNISH AND INSTALL SURFACE MOUNTED CONDUIT AND JUNCTION BOX FOR LIGHT SWITCH.
- FURNISH AND INSTALL SURFACE MOUNTED LIGHT FIXTURE.




2 KEY PLAN 4120 EC  
NOT TO SCALE

## 4120 EC

VA CONTRACT NO. VA69D-15-J-1908

Revisions:	Date
FINAL CONSTRUCTION DOCUMENT BID SET	01/13/2017
95% CONSTRUCTION DOCUMENT SUBMITTAL	10/13/2016
65% CONSTRUCTION DOCUMENT SUBMITTAL	08/02/2016
35% SCHEMATIC DESIGN SUBMITTAL	04/28/2016

CONSULTANTS:

ARCHITECT/ENGINEERS:
 BANCROFT ARCHITECTS + ENGINEERS www.bancroft-ae.com
700 Nicholas Blvd. Suite 300 Elk Grove Village, IL 60007 T: 847.952.9362 F: 847.952.9403 Bancroft AE No. 14-101

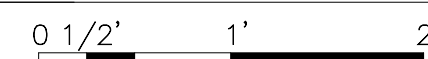
Drawing Title ROOM 4120 EC - ELECTRICAL CONSTRUCTION PLAN
Approved: Project Director - - VAPAHCS PLANNING AND ENGINEERING

Project Title UPGRADE W PANELS
Location 5000 W. NATIONAL AVE. MILWAUKEE, WI 53295
Date 01/13/2017
Checked LF
Drawn AG AB EM

Project Number 695-16-108
Building Number 111
Drawing Number E-115

Office of Construction and Facilities Management
 Department of Veterans Affairs





Department of  
Veterans Affairs

Drawing Number  
**ED-116**