

8120 EC

1. FURNISH AND INSTALL FEEDER CONDUIT AND CABLING, CONNECT FEEDER CABLES TO EXISTING RISER CABLE AT METAL PULL BOX LOCATION.
2. FURNISH AND INSTALL CONDUITS, CABLING AND ENCLOSED CIRCUIT BREAKER.
3. FURNISH AND INSTALL METAL RACEWAY/PULL BOX AT PANELBOARD TOP SECTION.
4. FURNISH AND INSTALL METAL RACEWAY/PULL BOX AT PANELBOARD BOTTOM SECTION.
5. CONNECT EXISTING CONDUITS AT PANELBOARD TOP SECTION INTO METAL RACEWAY/PULL BOX.
6. CONNECT EXISTING CONDUITS AT PANELBOARD BOTTOM SECTION INTO METAL RACEWAY/PULL BOX.
7. FURNISH AND INSTALL CONDUITS FROM TOP AND BOTTOM METAL RACEWAYS/PULL BOXES AND CONNECT TO PANELBOARDS.
8. FURNISH AND INSTALL BRANCH WIRING FOR BRANCH CIRCUITS THAT ARE ROUTED AT PANELBOARD TOP SECTIONS. FURNISH AND INSTALL WIRE SPLICING OF EXISTING AND NEW WIRES WITHIN THE METAL RACEWAY/PULL BOX.
9. FURNISH AND INSTALL BRANCH WIRING FOR BRANCH CIRCUITS THAT ARE ROUTED AT PANELBOARD BOTTOM SECTIONS. FURNISH AND INSTALL WIRE SPLICING OF EXISTING AND NEW WIRES WITHIN METAL RACEWAY/PULL BOX.
10. LL-81-1:
FURNISH AND INSTALL PANELBOARD, 30 CIRCUIT PANELBOARD.
11. UL-81-1:
FURNISH AND INSTALL PANELBOARD, 42 CIRCUIT PANELBOARD.
12. EXISITNG PANELBOARD EUL-CR-81-1 IS SCHEDULED TO REMAIN.
13. FURNISH AND INSTALL DUPLEX GFI OUTLET, CONDUIT AND WIRING, REFER TO DRAWING E-601 FOR NOTES REGARDING GFI OUTLET MOUNTING LOCATION.
14. FURNISH AND INSTALL SURFACE MOUNTED LIGHT FIXTURE.

VA CONTRACT NO. VA69D-15-J-1908

FINAL CONSTRUCTION DOCUMENT BID SET	01/13/2017
95% CONSTRUCTION DOCUMENT SUBMITTAL	10/13/2016
65% CONSTRUCTION DOCUMENT SUBMITTAL	08/02/2016
35% SCHEMATIC DESIGN SUBMITTAL	04/28/2016
Revisions:	Date

CONSULTANTS:

ARCHITECT/ENGINEERS:



Drawing Title
ROOM 8120 EC - ELECTRICAL
CONSTRUCTION PLAN

Approved: Project Director
-
-
VAPAHCS PLANNING AND ENGINEERING

Project Title	UPGRADE W PANELS
---------------	------------------

Location	5000 W. NATIONAL AVE. MILWAUKEE, WI 53295
----------	--

AVE.
295

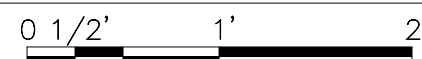
	Checked	Drawn
--	---------	-------

Project Number	695-16-108
Building Number	111

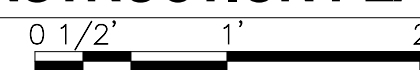
Drawing Number
E-132

Office of
Construction
and Facilities
Management





- FINAL CONSTRUCTION DOCUMENT (CD) BID SET



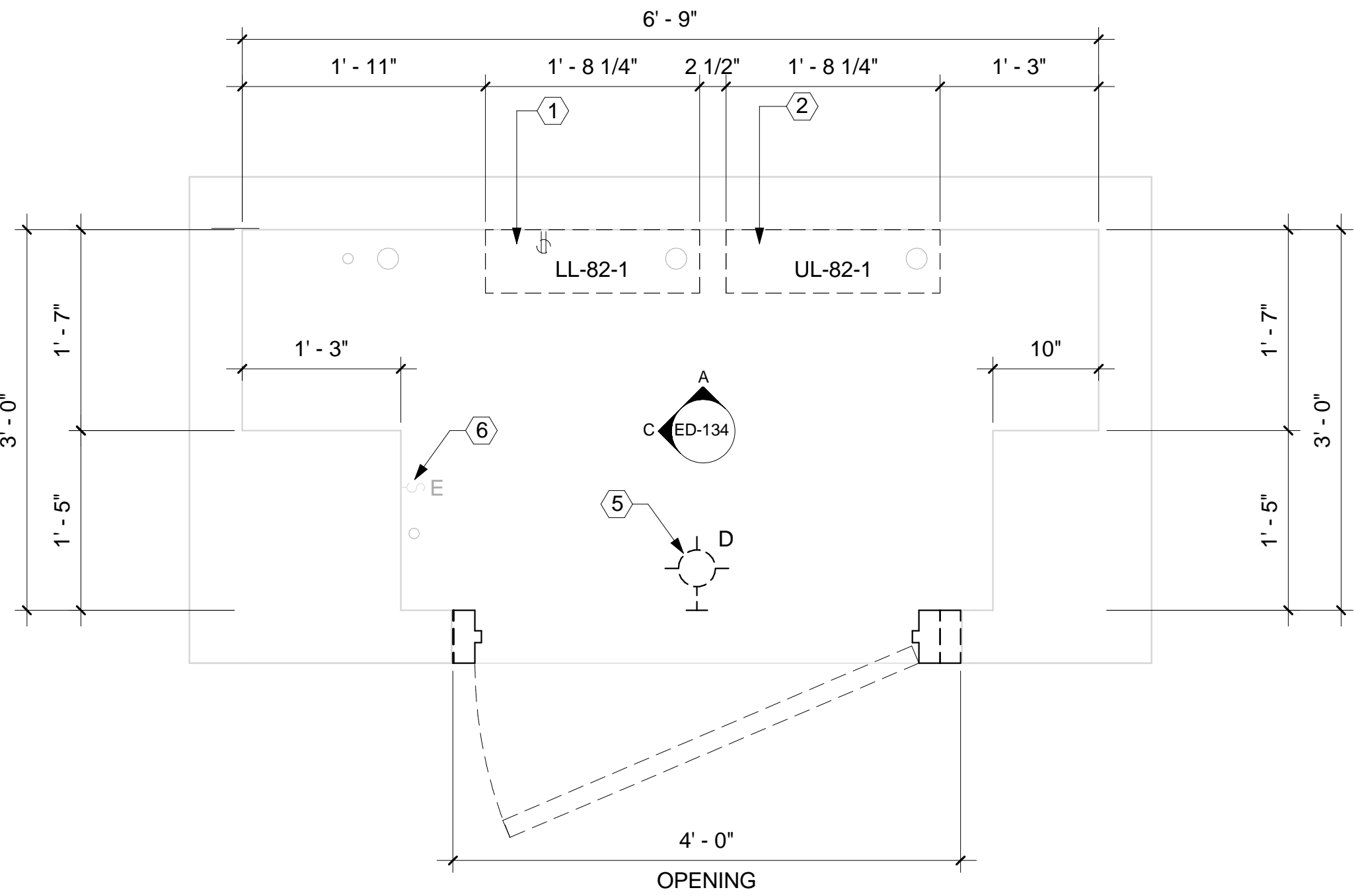
9 | FINAL CONSTRUCTION DOCUMENT (CD) BID SET

one eighth inch = one foot
one quarter inch = one foot
one half inch = one foot
three eighths inch = one foot
three quarters inch = one foot
one inch = one foot
one and one half inches = one foot
two inches = one foot
three inches = one foot
three and one half inches = one foot
four inches = one foot
five inches = one foot
six inches = one foot
seven inches = one foot
eight inches = one foot
nine inches = one foot
ten inches = one foot
eleven inches = one foot
twelve inches = one foot
thirteen inches = one foot
fourteen inches = one foot
fifteen inches = one foot
sixteen inches = one foot
seventeen inches = one foot
eighteen inches = one foot
nineteen inches = one foot
twenty inches = one foot
twenty one inches = one foot
twenty two inches = one foot
twenty three inches = one foot
twenty four inches = one foot
twenty five inches = one foot
twenty six inches = one foot
twenty seven inches = one foot
twenty eight inches = one foot
twenty nine inches = one foot
thirty inches = one foot
thirty one inches = one foot
thirty two inches = one foot
thirty three inches = one foot
thirty four inches = one foot
thirty five inches = one foot
thirty six inches = one foot
thirty seven inches = one foot
thirty eight inches = one foot
thirty nine inches = one foot
forty inches = one foot
forty one inches = one foot
forty two inches = one foot
forty three inches = one foot
forty four inches = one foot
forty five inches = one foot
forty six inches = one foot
forty seven inches = one foot
forty eight inches = one foot
forty nine inches = one foot
fifty inches = one foot
fifty one inches = one foot
fifty two inches = one foot
fifty three inches = one foot
fifty four inches = one foot
fifty five inches = one foot
fifty six inches = one foot
fifty seven inches = one foot
fifty eight inches = one foot
fifty nine inches = one foot
sixty inches = one foot
sixty one inches = one foot
sixty two inches = one foot
sixty three inches = one foot
sixty four inches = one foot
sixty five inches = one foot
sixty six inches = one foot
sixty seven inches = one foot
sixty eight inches = one foot
sixty nine inches = one foot
seventy inches = one foot
seventy one inches = one foot
seventy two inches = one foot
seventy three inches = one foot
seventy four inches = one foot
seventy five inches = one foot
seventy six inches = one foot
seventy seven inches = one foot
seventy eight inches = one foot
seventy nine inches = one foot
eighty inches = one foot
eighty one inches = one foot
eighty two inches = one foot
eighty three inches = one foot
eighty four inches = one foot
eighty five inches = one foot
eighty six inches = one foot
eighty seven inches = one foot
eighty eight inches = one foot
eighty nine inches = one foot
ninety inches = one foot
ninety one inches = one foot
ninety two inches = one foot
ninety three inches = one foot
ninety four inches = one foot
ninety five inches = one foot
ninety six inches = one foot
ninety seven inches = one foot
ninety eight inches = one foot
ninety nine inches = one foot
one hundred inches = one foot

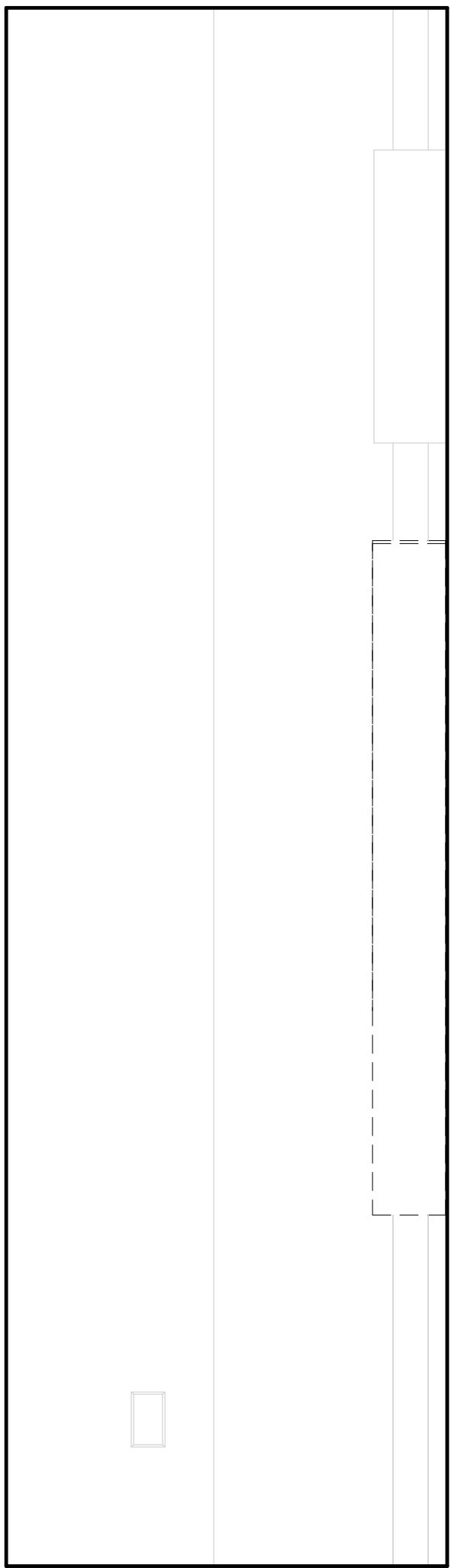
5/9/2017 3:21:10 PM

C:\Users\slaghi\Documents\08 EIGHTH FLOOR LEVEL - ELECTRICAL\Agg\aghi.dwg

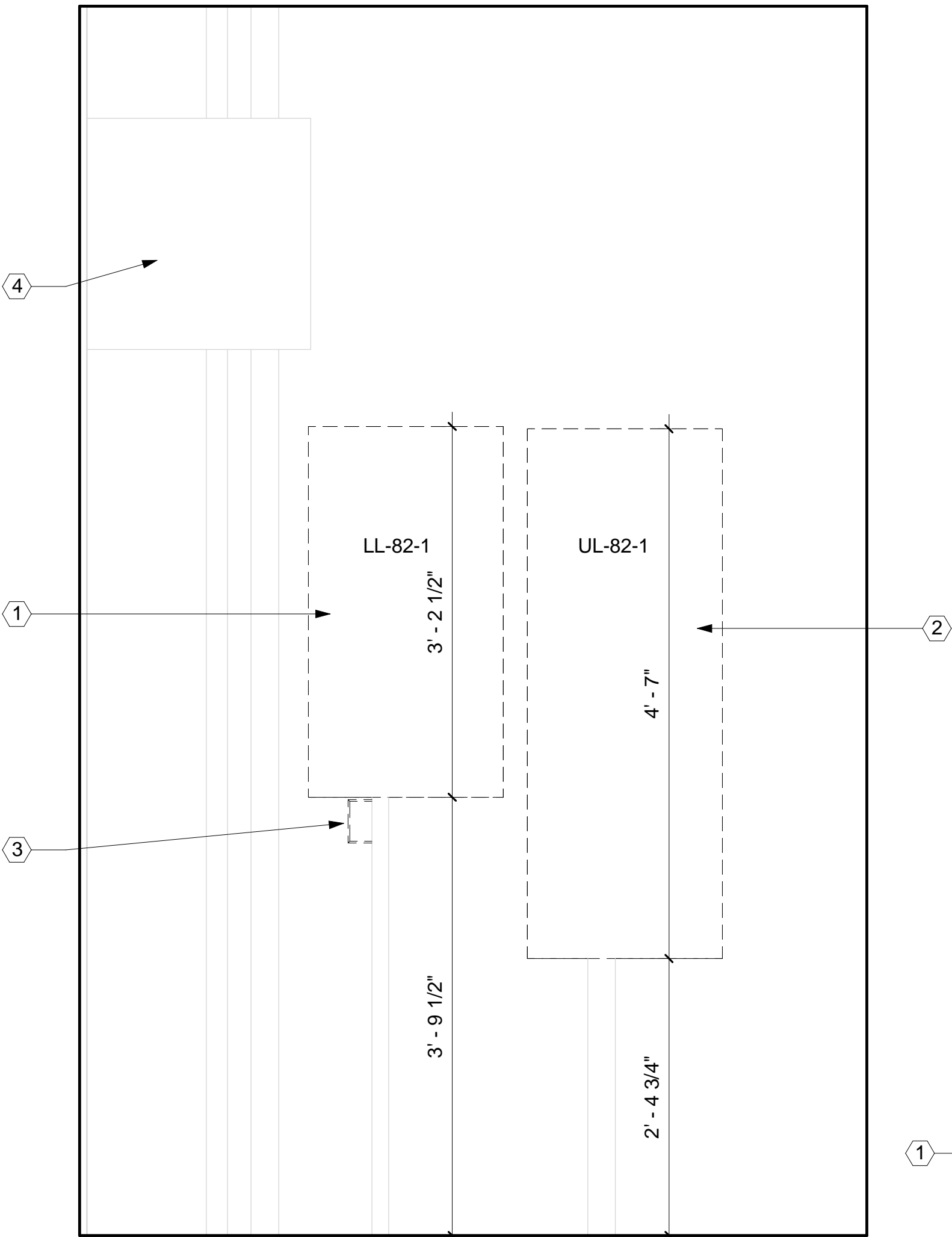
VA FORM 08-6231



PLAN NORTH
1
EIGHTH FLOOR LEVEL - ROOM 8220 EC - DEMOLITION PLAN
1" = 1'-0"



C
8220 EC - DEMOLITION ELEVATION C
1" = 1'-0"



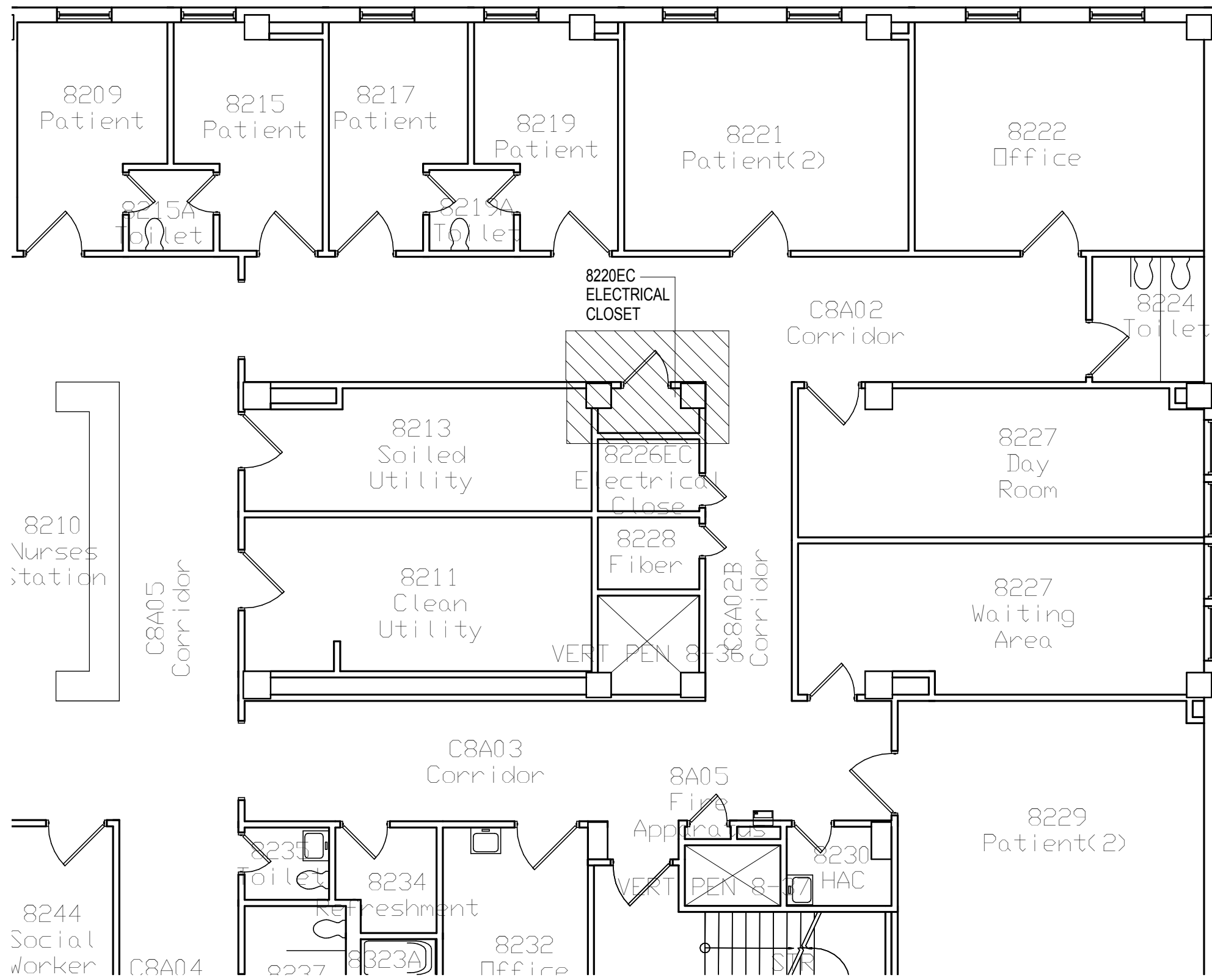
A
8220 EC - DEMOLITION ELEVATION A
1" = 1'-0"



P1
8220 EC - PHOTO 1
NOT TO SCALE



P2
8220 EC - PHOTO 2
NOT TO SCALE



PLAN NORTH
2
KEYPLAN 8220 EC DEMOLITION
NOT TO SCALE

8220 EC

VA CONTRACT NO. VA69D-15-J-1908

FINAL CONSTRUCTION DOCUMENT BID SET	01/13/2017
95% CONSTRUCTION DOCUMENT SUBMITTAL	10/13/2016
65% CONSTRUCTION DOCUMENT SUBMITTAL	08/02/2016
35% SCHEMATIC DESIGN SUBMITTAL	04/28/2016
Revisions:	Date

CONSULTANTS:

ARCHITECT/ENGINEERS:
 BANCROFT ARCHITECTS + ENGINEERS www.bancroft-ae.com
700 Nicholas Blvd. Suite 300 Elk Grove Village, IL 60007 T:847.952.9362 F:847.952.9403 Bancroft AE No. 14-101

Drawing Title
ROOM 8220 EC - ELECTRICAL DEMOLITION PLAN
Approved: Project Director
-
VAPAHCS PLANNING AND ENGINEERING

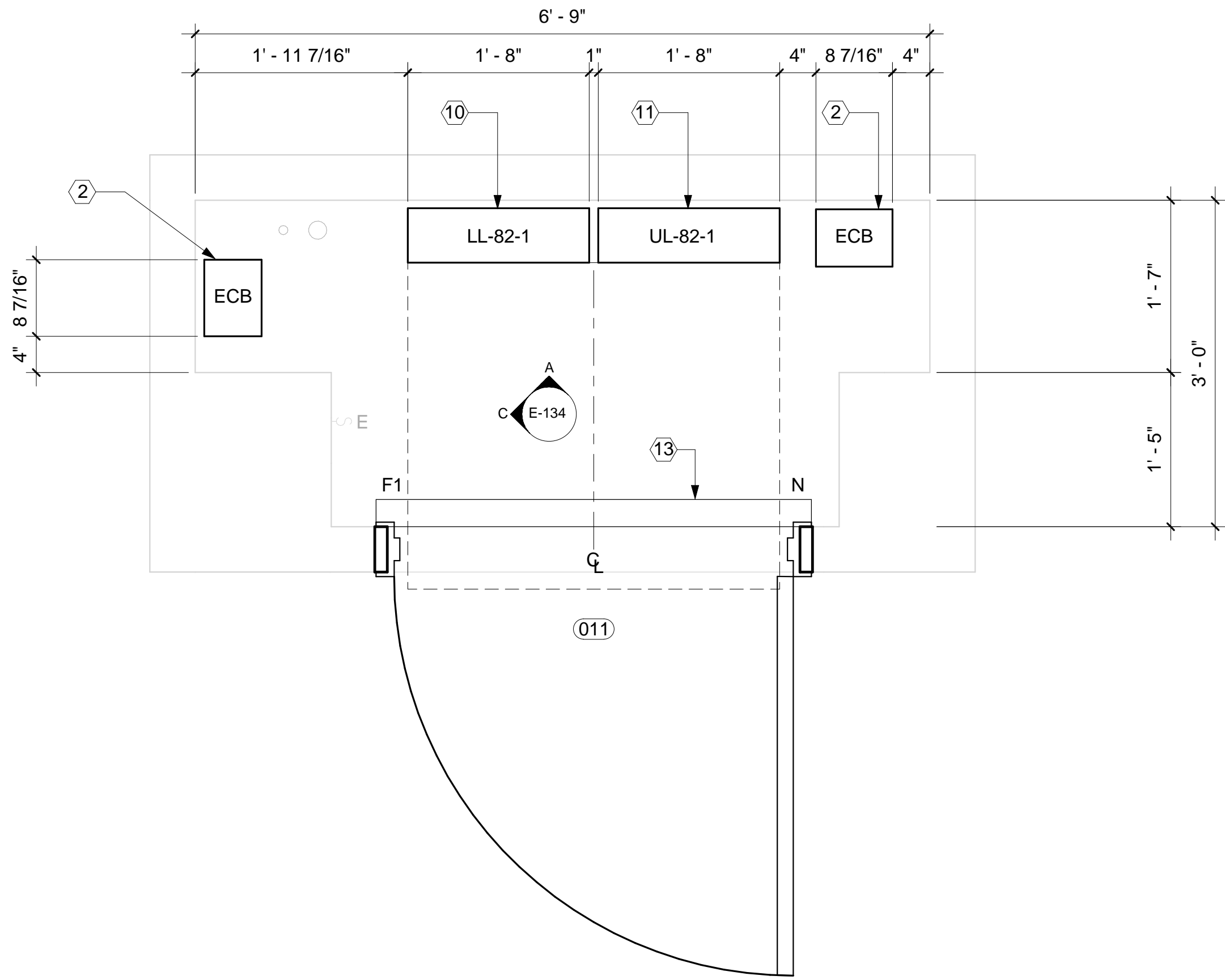
Project Title
UPGRADE W PANELS
Location
5000 W. NATIONAL AVE. MILWAUKEE, WI 53295
Date
01/13/2017

Checked
LF

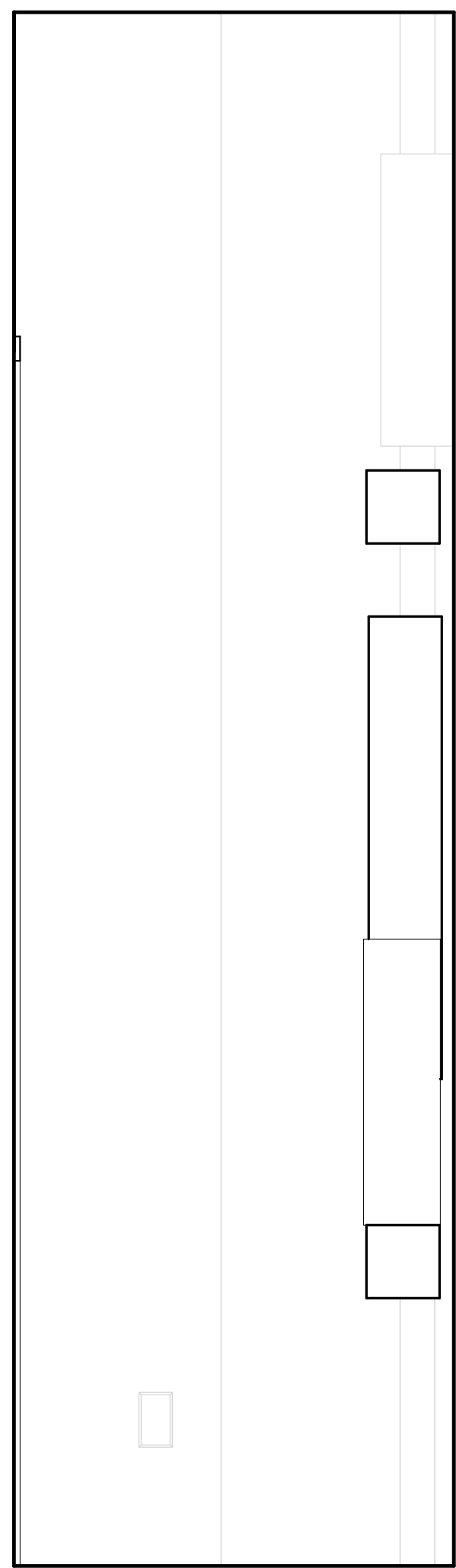
Drawn
AG AB EM

Project Number
695-16-108
Building Number
111
Drawing Number
ED-134

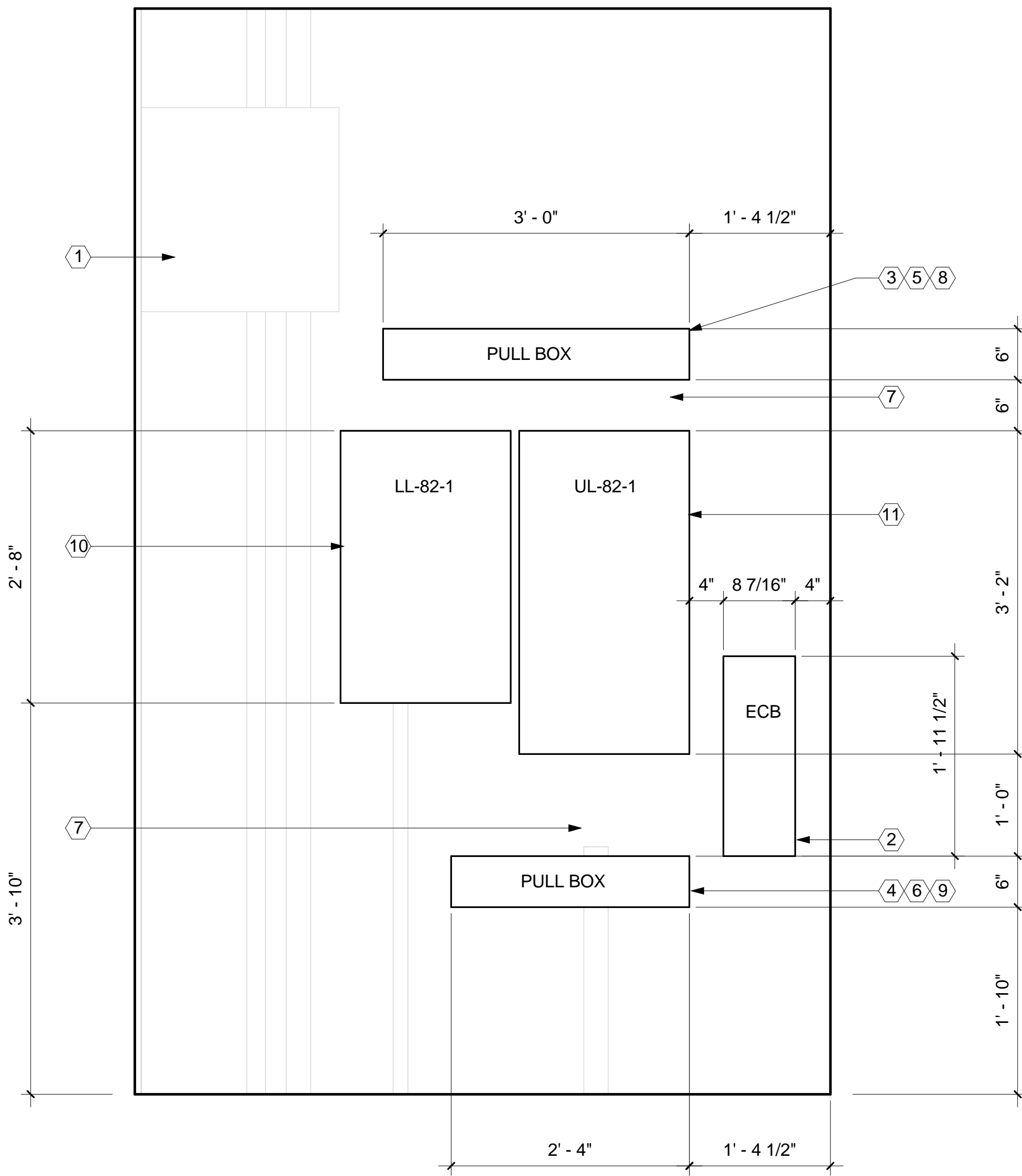
Office of Construction and Facilities Management

PLAN NORTH
1 EIGHTH FLOOR LEVEL - ROOM 8220 EC - CONSTRUCTION PLAN
1" = 1'-0"



C 8220 EC - CONSTRUCTION ELEVATION C
1" = 1'-0"



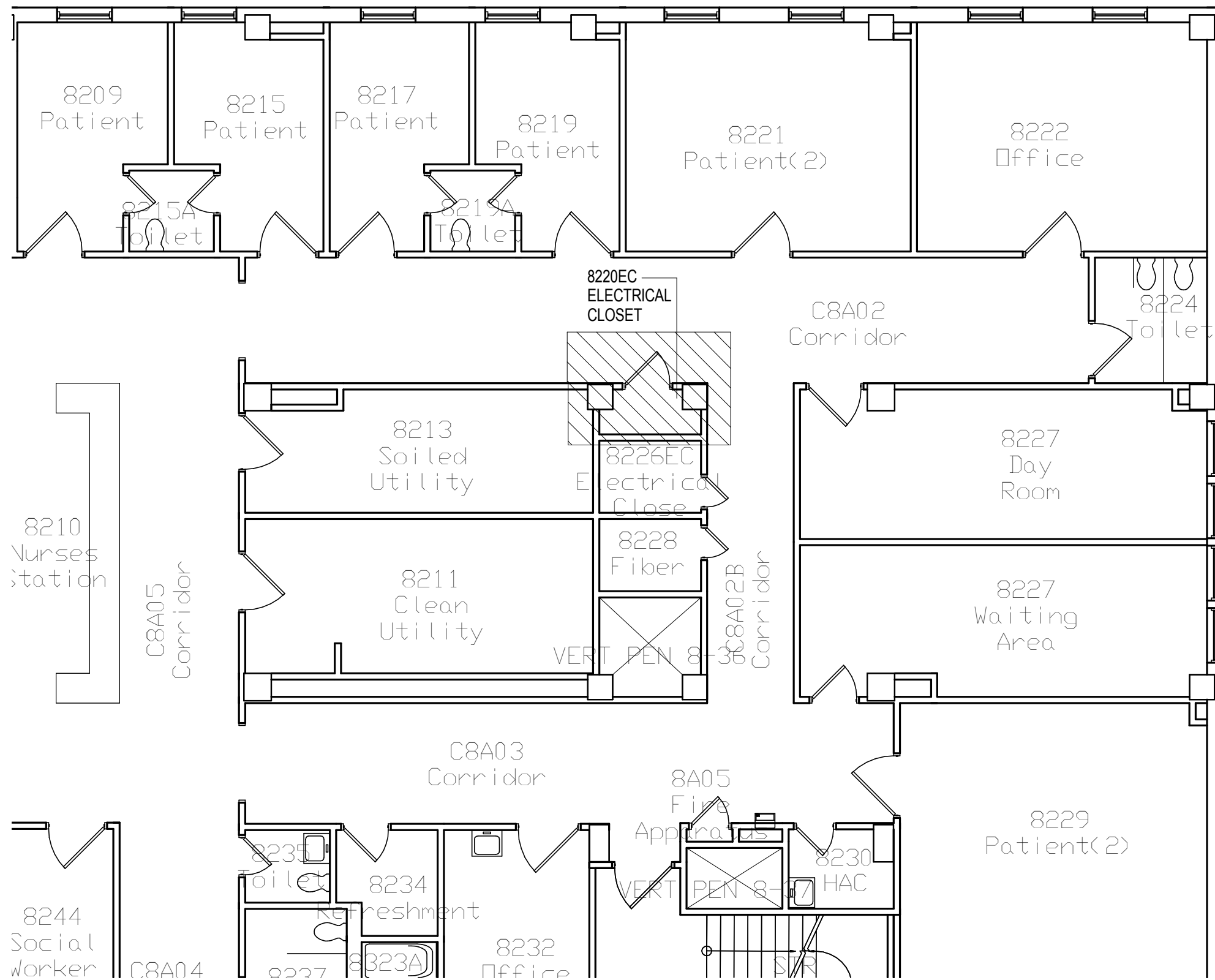
A 8220 EC - CONSTRUCTION ELEVATION A
1" = 1'-0"

GENERAL NOTES

- REFER TO ARCHITECTURAL CONSTRUCTION DRAWINGS FOR ADDITIONAL INFORMATION.
- REFER TO DRAWING E-601 FOR TYPICAL NEW PANELBOARD DETAILS.
- REFER TO DRAWING E-602 FOR TYPICAL NEW ENCLOSED CIRCUIT BREAKER DETAILS.

ELECTRICAL KEYED NOTES

- FURNISH AND INSTALL FEEDER CONDUIT AND CABLING. CONNECT FEEDER CABLES TO EXISTING RISER CABLE AT METAL PULL BOX LOCATION.
- FURNISH AND INSTALL CONDUITS, CABLING AND ENCLOSED CIRCUIT BREAKER.
- FURNISH AND INSTALL METAL RACEWAY/PULL BOX AT PANELBOARD TOP SECTION.
- FURNISH AND INSTALL METAL RACEWAY/PULL BOX AT PANELBOARD BOTTOM SECTION.
- CONNECT EXISTING CONDUITS AT PANELBOARD TOP SECTION INTO METAL RACEWAY/PULL BOX.
- CONNECT EXISTING CONDUITS AT PANELBOARD BOTTOM SECTION INTO METAL RACEWAY/PULL BOX.
- FURNISH AND INSTALL CONDUITS FROM TOP AND BOTTOM METAL RACEWAYS/PULL BOXES AND CONNECT TO PANELBOARDS.
- FURNISH AND INSTALL BRANCH WIRING FOR BRANCH CIRCUITS THAT ARE ROUTED AT PANELBOARD TOP SECTIONS. FURNISH AND INSTALL WIRE SPLICING OF EXISTING AND NEW WIRES WITHIN THE METAL RACEWAY/PULL BOX.
- FURNISH AND INSTALL BRANCH WIRING FOR BRANCH CIRCUITS THAT ARE ROUTED AT PANELBOARD BOTTOM SECTIONS. FURNISH AND INSTALL WIRE SPLICING OF EXISTING AND NEW WIRES WITHIN METAL RACEWAY/PULL BOX.
- LL-82-1:
FURNISH AND INSTALL PANELBOARD, 18 CIRCUIT PANELBOARD.
- UL-82-1:
FURNISH AND INSTALL PANELBOARD, 42 CIRCUIT PANELBOARD.
- FURNISH AND INSTALL DUPLEX GFI OUTLET, CONDUIT AND WIRING. REFER TO DRAWING E-601 FOR NOTES REGARDING GFI OUTLET MOUNTING LOCATION.
- FURNISH AND INSTALL SURFACE MOUNTED LIGHT FIXTURE.

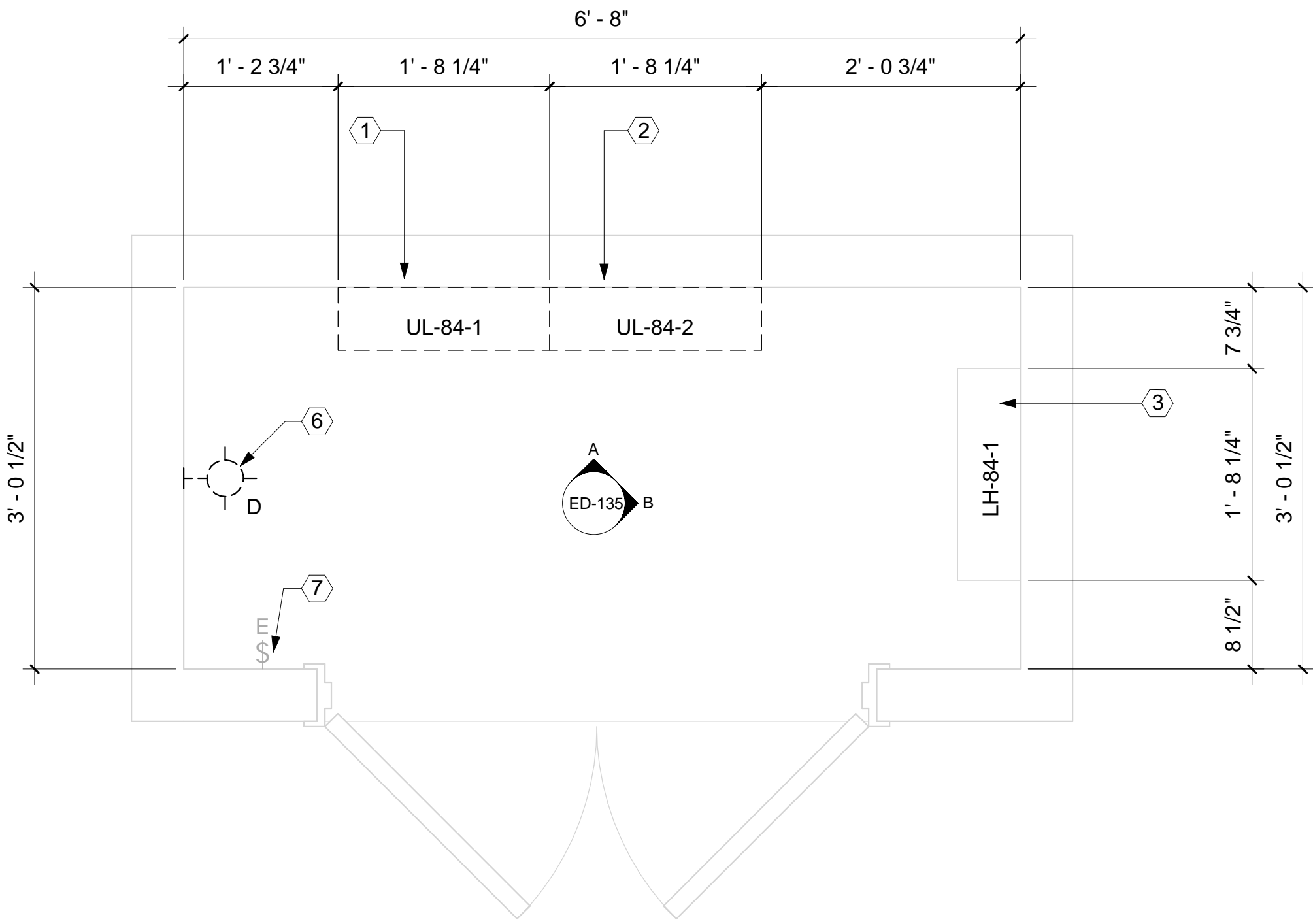


GENERAL NOTES

- REFER TO DRAWING ED-601 FOR DEMOLITION DETAIL OF TYPICAL EXISTING PANELBOARD.
- REFER TO SPECIFICATIONS, VOLUME 2, APPENDIX B - PHOTO DOCUMENTATION - EXISTING ELECTRICAL CLOSETS FOR INTERIOR PHOTOS OF EXISTING PANELBOARDS.

ELECTRICAL KEYED NOTES

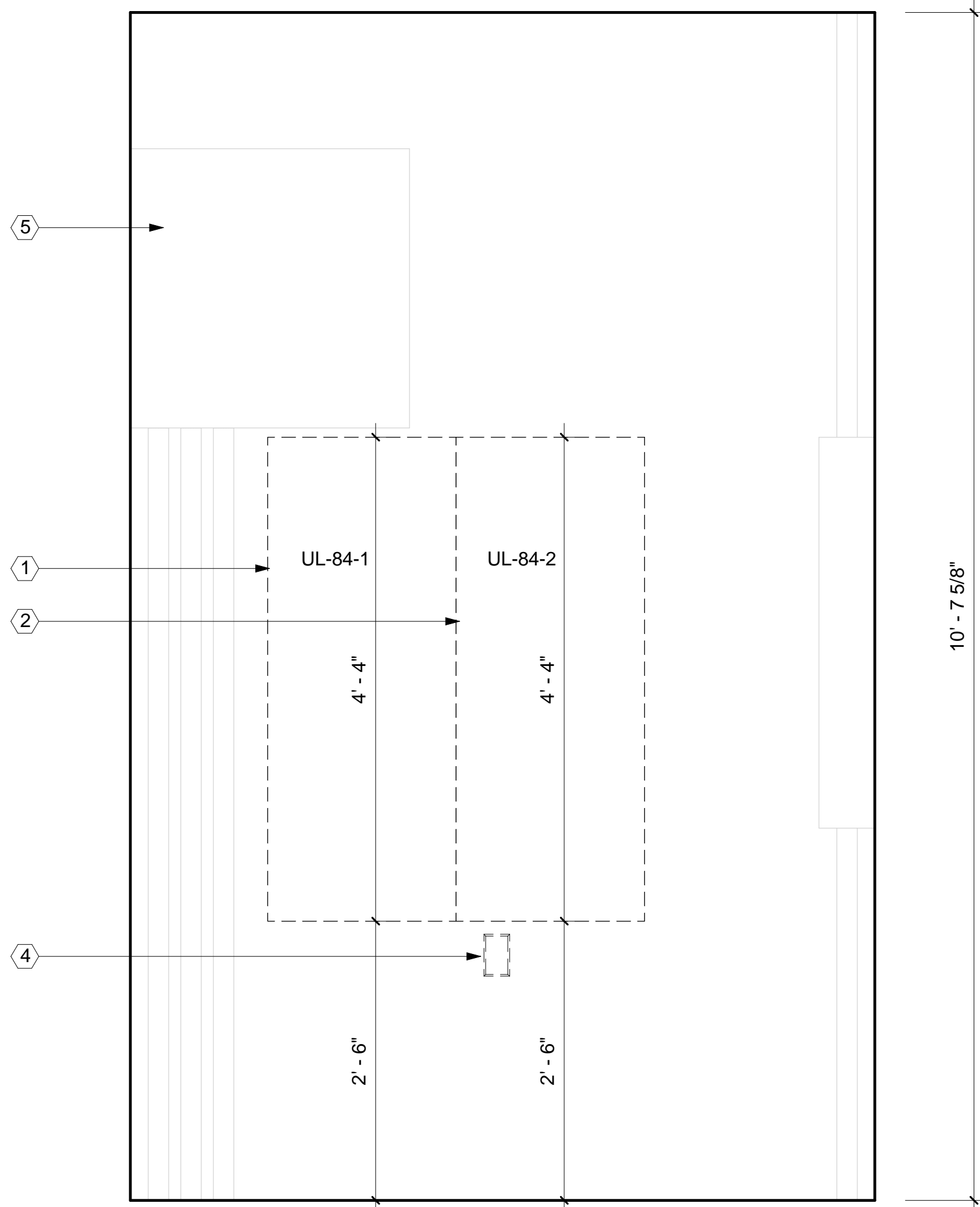
- EXISTING PANELBOARD UL-84-1 TO BE DEMOLISHED. EXISTING PANELBOARD IS 24 CIRCUIT BOARD. DISCONNECT FEEDER CABLES AND RESPECTIVE CONDUITS. DISCONNECT BRANCH WIRING AND CONDUITS.
- EXISTING PANELBOARD UL-84-2 TO BE DEMOLISHED. EXISTING PANELBOARD IS 42 CIRCUIT PANELBOARD. DISCONNECT FEEDER CABLES AND RESPECTIVE CONDUITS. DISCONNECT BRANCH WIRING AND CONDUITS.
- EXISTING PANELBOARD LH-84-1 IS SCHEDULED TO REMAIN.
- EXISTING QUAD OUTLET TO BE DEMOLISHED.
- EXISTING METAL RACEWAY/PULL BOX TO REMAIN.
- DEMOLISH EXISTING SURFACE MOUNTED LIGHT FIXTURE, WIRING, AND CONDUIT.
- EXISTING SURFACE MOUNTED LIGHT SWITCH SHALL REMAIN. DEMOLISH WIRING FROM EXISTING SWITCH TO EXISTING LIGHT FIXTURE.



1 EIGHTH FLOOR LEVEL - ROOM 8407 EC - DEMOLITION PLAN

1" = 1'-0"

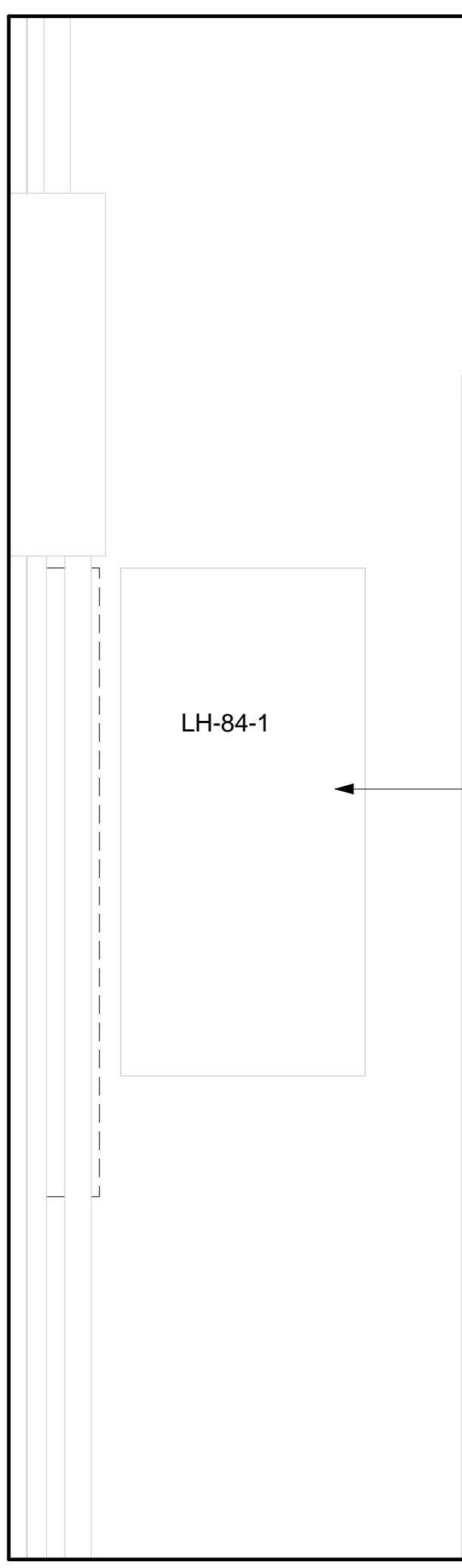
0 1/2' 1' 2'



A 8407 EC - DEMOLITION ELEVATION A

1" = 1'-0"

0 1/2' 1' 2'



B 8407 EC - DEMOLITION ELEVATION B

1" = 1'-0"

0 1/2' 1' 2'



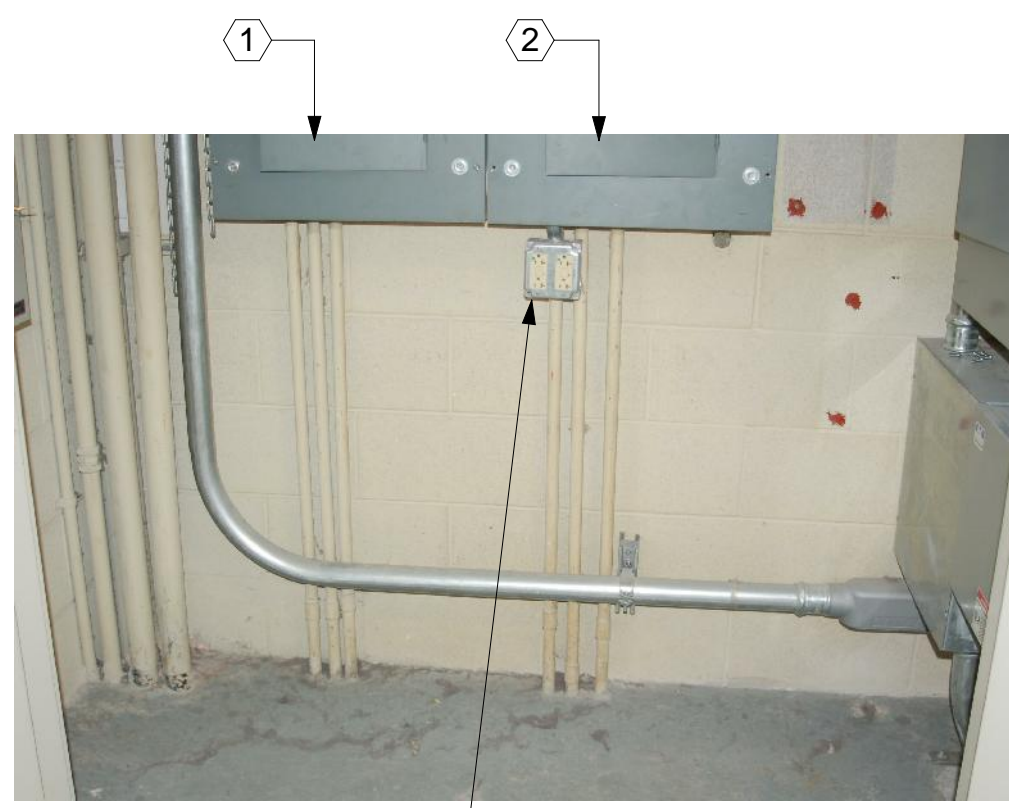
P1 8407 EC - PHOTO 1

NOT TO SCALE



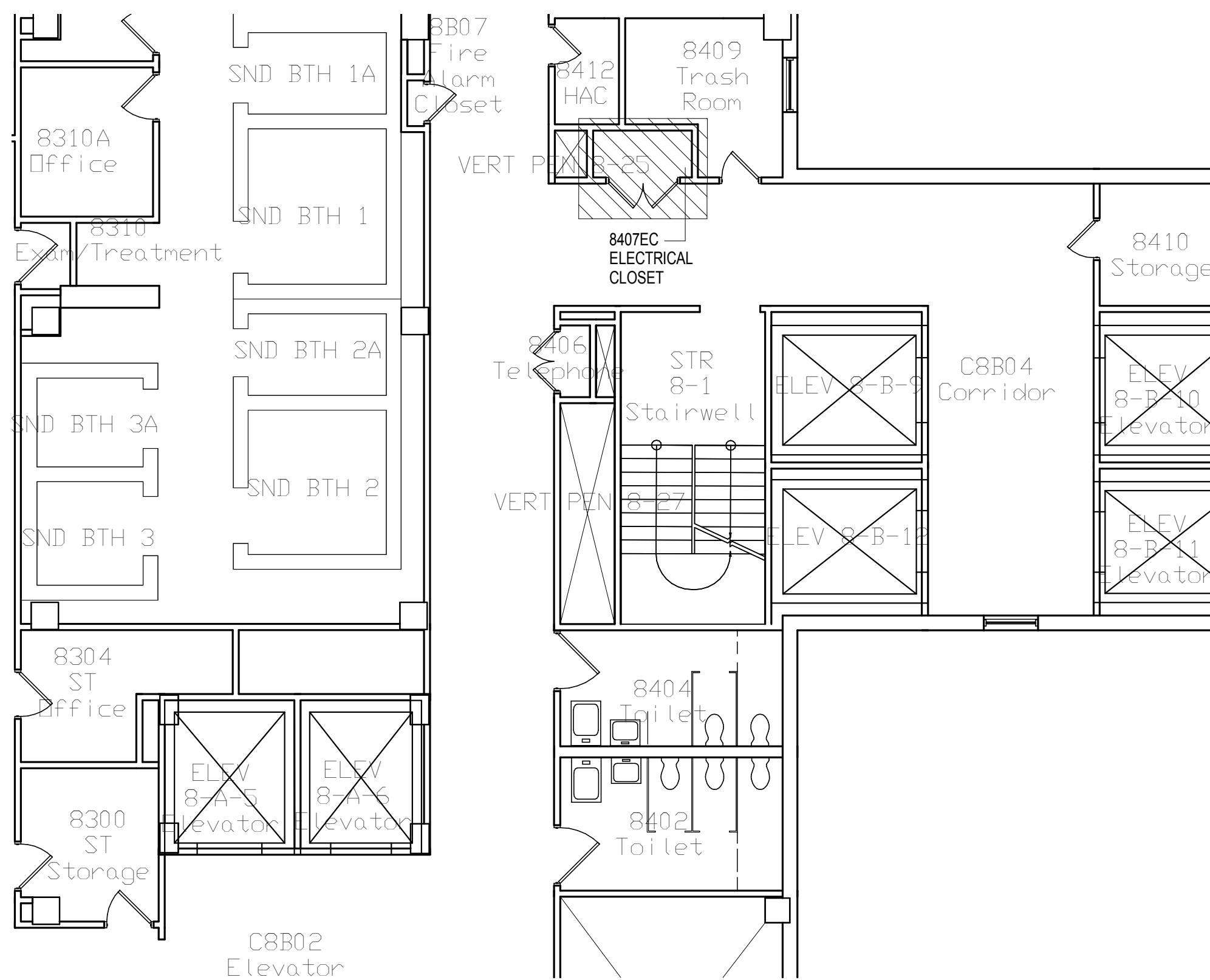
P2 8407 EC - PHOTO 2

NOT TO SCALE



P3 8407 EC - PHOTO 3

NOT TO SCALE



2 KEYPLAN 8407 EC DEMOLITION

NOT TO SCALE

8407 EC

VA CONTRACT NO. VA69D-15-J-1908

Revisions:	Date
FINAL CONSTRUCTION DOCUMENT BID SET	01/13/2017
95% CONSTRUCTION DOCUMENT SUBMITTAL	10/13/2016
65% CONSTRUCTION DOCUMENT SUBMITTAL	08/02/2016
35% SCHEMATIC DESIGN SUBMITTAL	04/28/2016

CONSULTANTS:

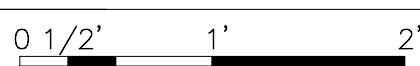
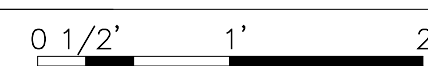
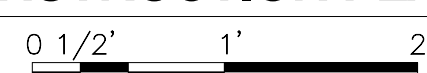
ARCHITECT/ENGINEERS:
 BANCROFT ARCHITECTS + ENGINEERS www.bancroft-ae.com
700 Nicholas Blvd, Suite 300 Elk Grove Village, IL 60007 T: 847.952.9362 F: 847.952.9403 Bancroft AE No. 14-101

Drawing Title
ROOM 8407 EC - ELECTRICAL DEMOLITION PLAN
Approved: Project Director
- VAPAHCS PLANNING AND ENGINEERING

Project Title
UPGRADE W PANELS
Location
5000 W. NATIONAL AVE. MILWAUKEE, WI 53295
Date
01/13/2017
Checked
LF
Drawn
AG AB EM

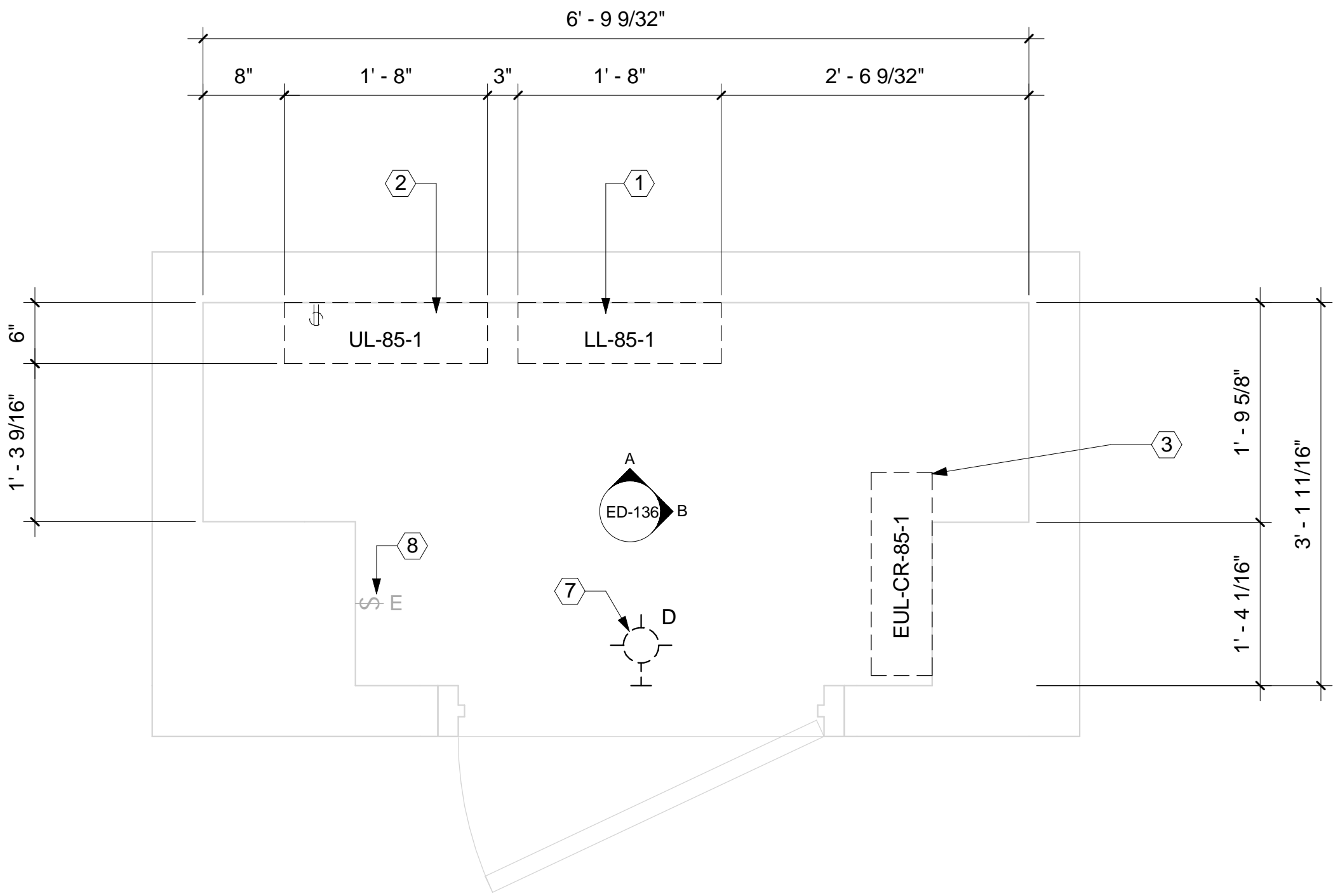
Project Number
695-16-108
Building Number
111
Drawing Number
ED-135

Office of Construction and Facilities Management
 Department of Veterans Affairs

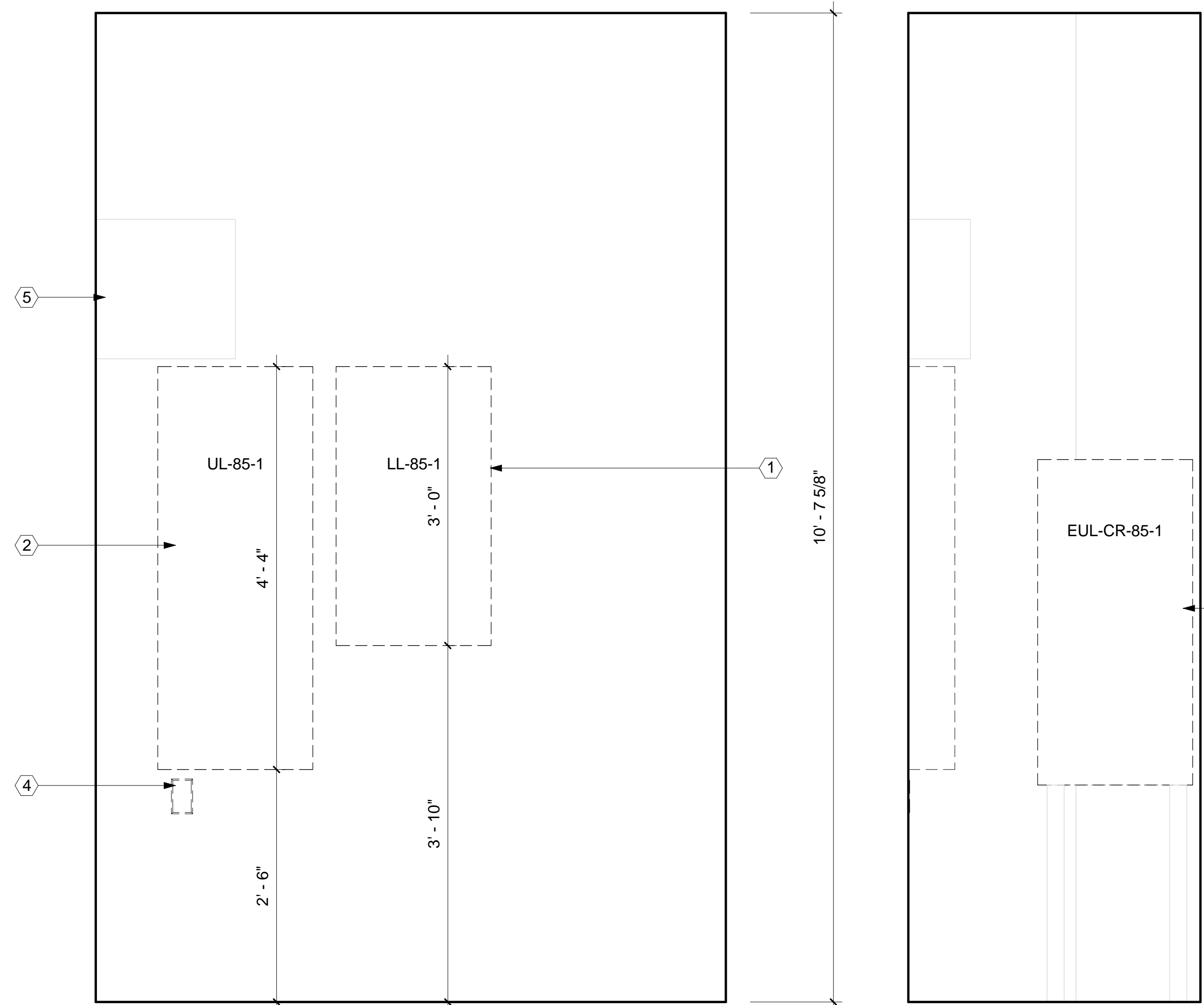


Bancroft AE No. 14-10

one eighth inch = one foot
one quarter inch = one foot
three eighths inch = one foot
one half inch = one foot
three quarters inch = one foot
one inch = one foot
one and one half inches = one foot
two inches = one foot
three inches = one foot
four inches = one foot
five inches = one foot
six inches = one foot
seven inches = one foot
eight inches = one foot
nine inches = one foot
ten inches = one foot
eleven inches = one foot
twelve inches = one foot
thirteen inches = one foot
fourteen inches = one foot
fifteen inches = one foot
sixteen inches = one foot
seventeen inches = one foot
eighteen inches = one foot
nineteen inches = one foot
twenty inches = one foot
twenty one inches = one foot
twenty two inches = one foot
twenty three inches = one foot
twenty four inches = one foot
twenty five inches = one foot
twenty six inches = one foot
twenty seven inches = one foot
twenty eight inches = one foot
twenty nine inches = one foot
thirty inches = one foot
thirty one inches = one foot
thirty two inches = one foot
thirty three inches = one foot
thirty four inches = one foot
thirty five inches = one foot
thirty six inches = one foot
thirty seven inches = one foot
thirty eight inches = one foot
thirty nine inches = one foot
forty inches = one foot
forty one inches = one foot
forty two inches = one foot
forty three inches = one foot
forty four inches = one foot
forty five inches = one foot
forty six inches = one foot
forty seven inches = one foot
forty eight inches = one foot
forty nine inches = one foot
fifty inches = one foot
fifty one inches = one foot
fifty two inches = one foot
fifty three inches = one foot
fifty four inches = one foot
fifty five inches = one foot
fifty six inches = one foot
fifty seven inches = one foot
fifty eight inches = one foot
fifty nine inches = one foot
sixty inches = one foot
sixty one inches = one foot
sixty two inches = one foot
sixty three inches = one foot
sixty four inches = one foot
sixty five inches = one foot
sixty six inches = one foot
sixty seven inches = one foot
sixty eight inches = one foot
sixty nine inches = one foot
seventy inches = one foot
seventy one inches = one foot
seventy two inches = one foot
seventy three inches = one foot
seventy four inches = one foot
seventy five inches = one foot
seventy six inches = one foot
seventy seven inches = one foot
seventy eight inches = one foot
seventy nine inches = one foot
eighty inches = one foot
eighty one inches = one foot
eighty two inches = one foot
eighty three inches = one foot
eighty four inches = one foot
eighty five inches = one foot
eighty six inches = one foot
eighty seven inches = one foot
eighty eight inches = one foot
eighty nine inches = one foot
ninety inches = one foot
ninety one inches = one foot
ninety two inches = one foot
ninety three inches = one foot
ninety four inches = one foot
ninety five inches = one foot
ninety six inches = one foot
ninety seven inches = one foot
ninety eight inches = one foot
ninety nine inches = one foot
one hundred inches = one foot

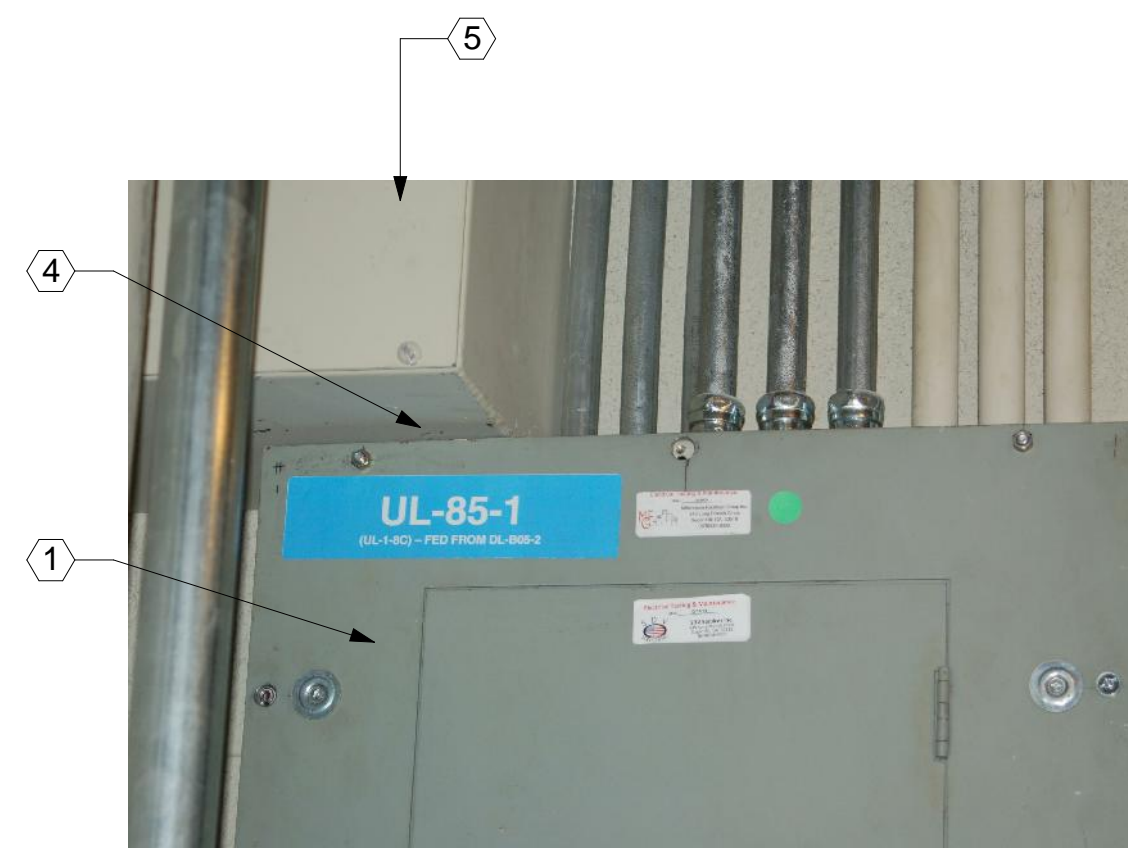


PLAN NORTH
1
EIGHTH FLOOR LEVEL - ROOM 8515 EC - DEMOLITION PLAN
1" = 1'-0"

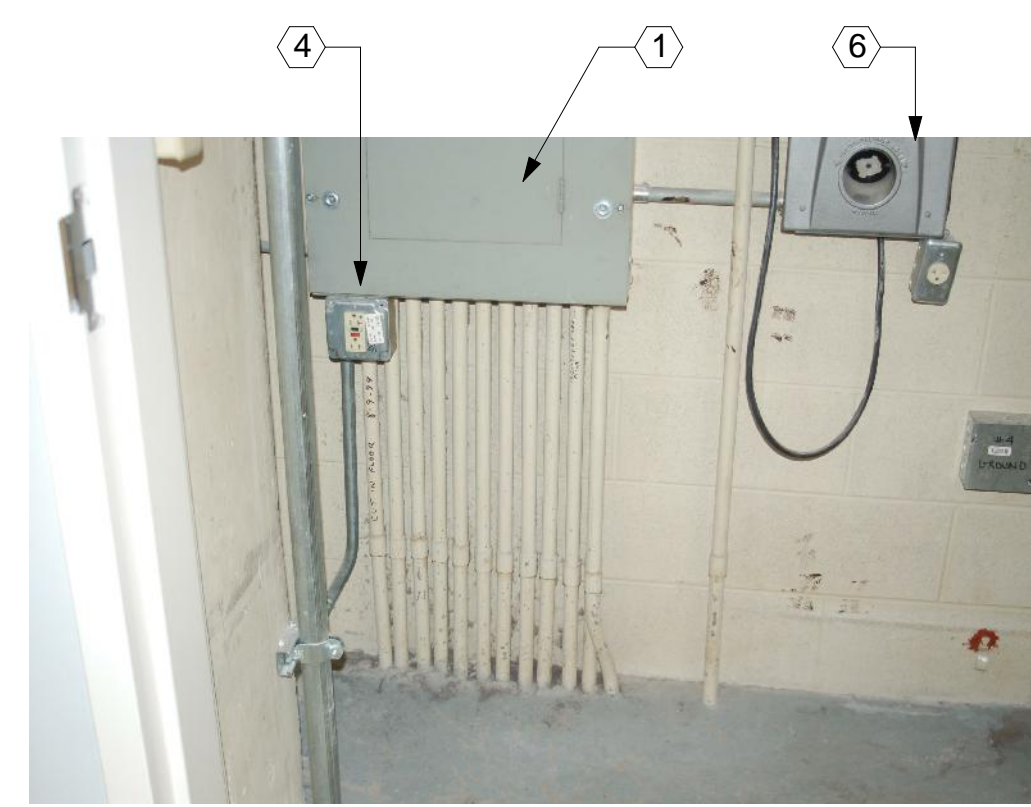


A
8515 EC - DEMOLITION ELEVATION A
1" = 1'-0"

B
8515 EC - DEMOLITION ELEVATION B
1" = 1'-0"



P1
8515 EC - PHOTO 1
NOT TO SCALE



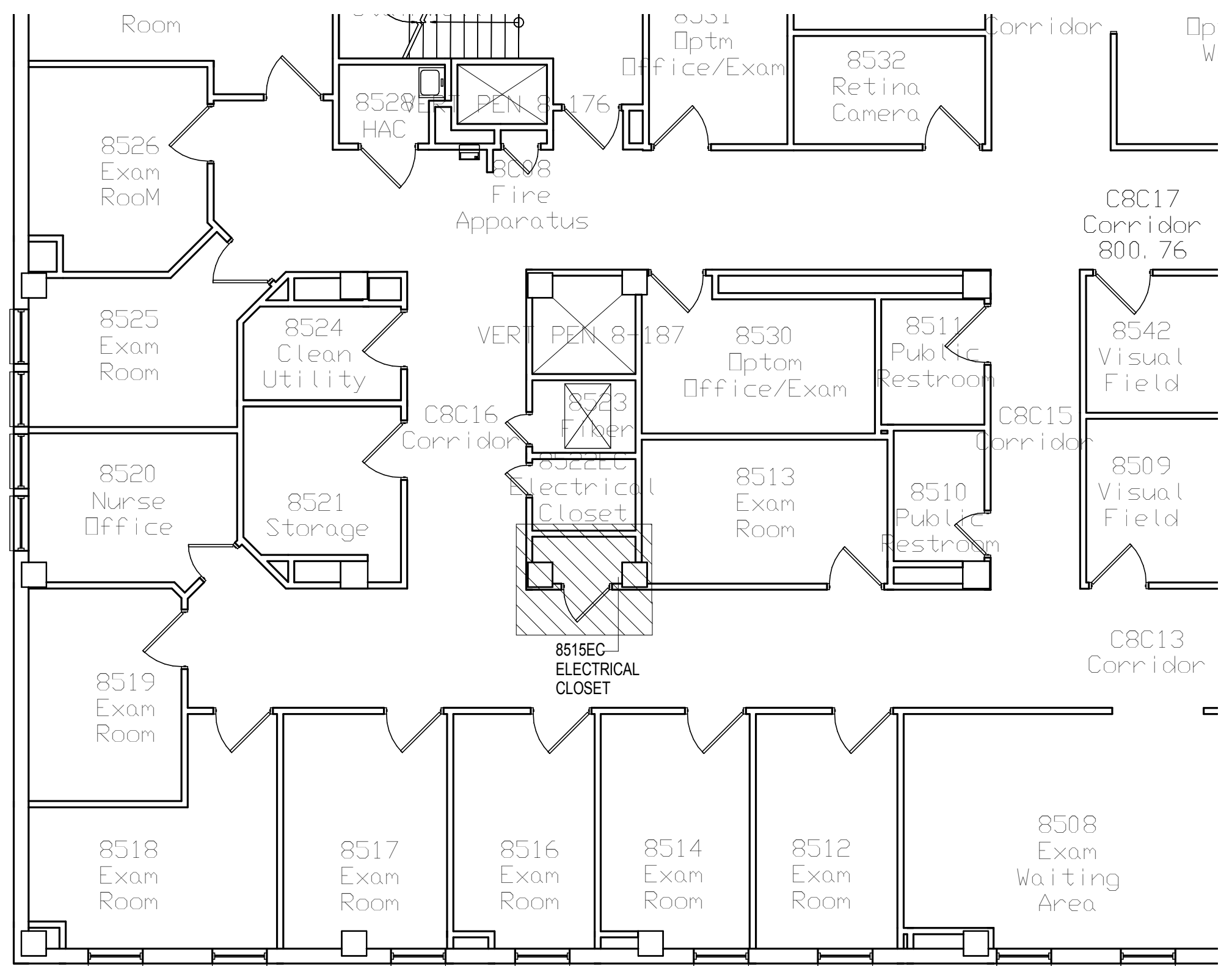
P2
8515 EC - PHOTO 2
NOT TO SCALE



P3
8515 EC - PHOTO 3
NOT TO SCALE



P4
8515 EC - PHOTO 4
NOT TO SCALE



PLAN NORTH
2
KEYPLAN 8515 EC DEMOLITION
NOT TO SCALE

8515 EC

VA CONTRACT NO. VA69D-15-J-1908

CONSULTANTS:		ARCHITECT/ENGINEERS:		Drawing Title ROOM 8515 EC - ELECTRICAL DEMOLITION PLAN	Project Title UPGRADE W PANELS	Project Number 695-16-108	Office of Construction and Facilities Management Department of Veterans Affairs
700 Nicholas Blvd, Suite 300 Elk Grove Village, IL 60007 T: 847.952.9362 F: 847.952.9403 Bancroft Architects + Engineers www.bancroft-ae.com		Approved: Project Director - VAPAHCS PLANNING AND ENGINEERING		Location 5000 W. NATIONAL AVE. MILWAUKEE, WI 53295	Building Number 111	Drawing Number ED-136	
FINAL CONSTRUCTION DOCUMENT BID SET 95% CONSTRUCTION DOCUMENT SUBMITTAL 65% CONSTRUCTION DOCUMENT SUBMITTAL 35% SCHEMATIC DESIGN SUBMITTAL Revisions:		Date		Date 01/13/2017	Checked LF	Drawn AG AB EM	
01/13/2017 10/13/2016 08/02/2016 04/28/2016							



A horizontal graphic scale bar with alternating black and white segments. It is labeled with '0 1/2'', '1'', and '2'' at the top.



NOT TO SCALE



NOT TO SCALE



NOT TO SCALE



NOT TO SCALE




NOT TO SCALE

Office of
Construction
and Facilities
Management



1. EXISTING PANELBOARD LL-86-1 TO BE DEMOLISHED. EXISTING PANEL BOARD IS 24 CIRCUIT BOARD. DISCONNECT FEEDER CABLES AND RESPECTIVE CONDUITS. DISCONNECT BRANCH WIRING AND CONDUITS.
2. EXISTING PANELBOARD UL-86-1 TO BE DEMOLISHED. EXISTING PANELBOARD IS 42 CIRCUIT BOARD. DISCONNECT FEEDER CABLES AND RESPECTIVE CONDUITS. DISCONNECT BRANCH WIRING AND CONDUITS.
3. EXISTING PANELBOARD UL-86-2 TO BE DEMOLISHED. EXISTING PANEL BOARD IS 42 CIRCUIT BOARD. DISCONNECT FEEDER CABLES AND RESPECTIVE CONDUITS. DISCONNECT BRANCH WIRING AND CONDUITS.
4. EXISTING FEEDER CONDUIT AND CABLING SHALL BE DISCONNECTED.
5. EXISTING CONDUITS AND BRANCH WIRING AT ELECTRIC PANEL TOP SECTION SHALL BE DISCONNECTED.
6. EXISTING CONDUITS AND BRANCH WIRING AT ELECTRIC PANEL BOTTOM SECTION SHALL BE DISCONNECTED.
7. EXISTING DUPLEX OUTLET, CONDUIT AND WIRING TO BE DEMOLISHED.
8. EXISTING METAL PULL BOX IS SCHEDULED TO REMAIN.
9. EXISTING FEEDER CONDUITS ARE SCHEDULED TO REMAIN.
10. EXISTING WALL CONSTRUCTION IS CONCRETE MASONRY UNITS/C.M.U.
11. EXISTING FLOOR FINISH IS EXPOSED CONCRETE SLAB.
12. EXISTING METAL SUPPORT CHANNELS ARE SCHEDULED TO REMAIN.
13. EXISTING CONDUITS UP FROM FLOOR SLAB ARE PLUGGED AND ABANDONED. THESE CONDUITS ARE SCHEDULED TO REMAIN IN PLACE.
14. DEMOLISH EXISTING SURFACE MOUNTED LIGHT FIXTURE, WIRING, AND CONDUIT.
15. DEMOLISH EXISTING SURFACE MOUNTED LIGHT SWITCH, WIRING, AND CONDUIT.

VA CONTRACT NO. VA69D-15-J-1908	
FINAL CONSTRUCTION DOCUMENT BID SET	01/13/2017
95% CONSTRUCTION DOCUMENT SUBMITTAL	10/13/2016
65% CONSTRUCTION DOCUMENT SUBMITTAL	08/02/2016
35% SCHEMATIC DESIGN SUBMITTAL	04/28/2016
Revisions:	Date



Bancroft Architects + Engineers
www.bancroft-ae.com

Drawing Number

ED-137