

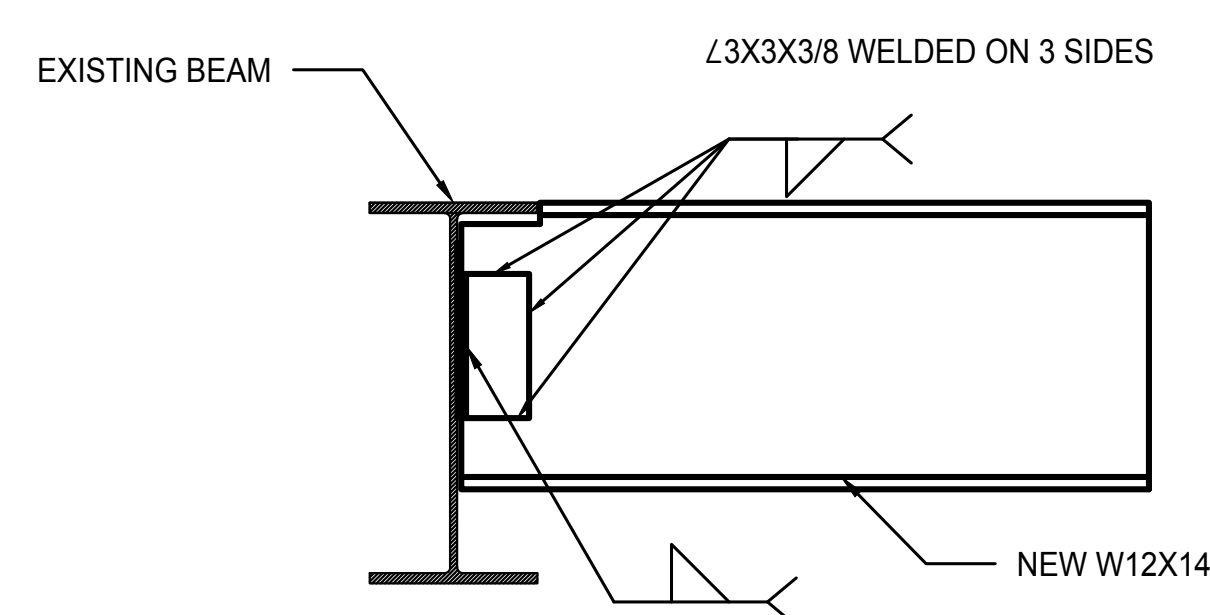
1 NINTH FLOOR
1/4" = 1'0"

GENERAL NOTES:

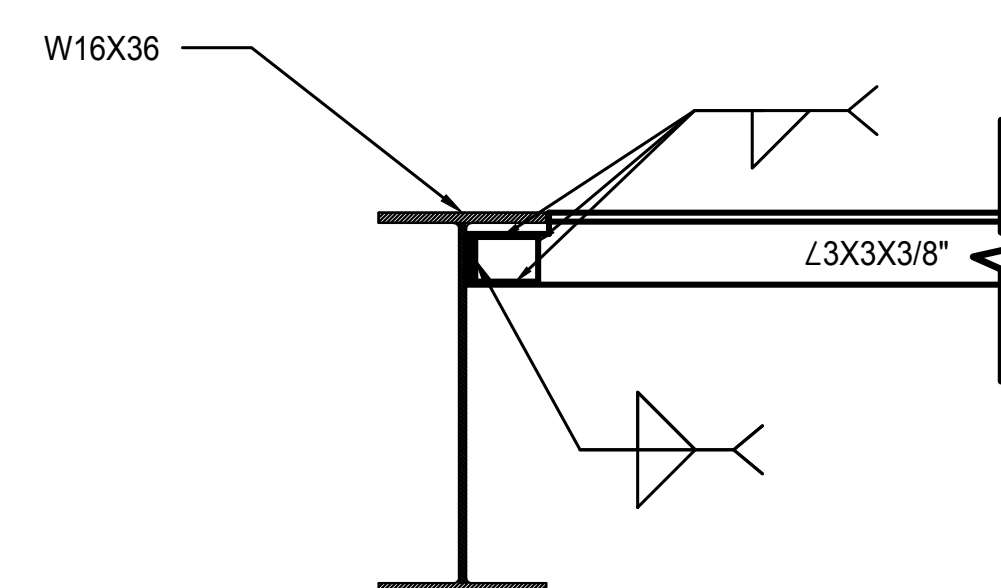
1. DESIGN STANDARDS: AISC MANUAL OF STEEL CONSTRUCTION, 8TH EDITION.
2. STEEL ASTM A-36, SHOP PRIME, TOUCH UP IN FIELD.
3. ALL WELDING SHALL BE IN ACCORDANCE WITH AMERICAN WELDING SOCIETY CODES, USING E70XX ELECTRODES. ALL WELDS SHALL BE FULL PENETRATION OR WELDED BOTH SIDES. MINIMUM THROAT OF ALL WELDS TO BE 1/4".
4. ALL GRATING TO BE GALVANIZED WELDED SERRATED STEEL AS FOLLOWS:
FOR UP TO 5'-6": MAIN BEARING BARS TO BE 1-1/4" x 3/16", SPACED 1-3/16", CENTER TO CENTER.
5. COORDINATE ALL OPENINGS IN STEEL GRATING WITH ARCH. AND MECH. FRAMING OF OPENING TO BE 4 x 4 x 1/4 ANGLES UNLESS NOTED ON PLANS.
6. VERIFY LOCATION AND DIMENSIONS OF ALL DEPRESSIONS SHOWN ON PLANS AGAINST ARCHITECTURAL PLANS, ROOM FINISH SCHEDULE AND DETAILS.
7. SEE ARCH. AND MECH. FOR EXACT FLOOR DRAIN LOCATIONS.
8. REFER TO MECHANICAL DRAWINGS FOR EXACT LOCATIONS OF ALL ROOF PENETRATIONS.
9. MECHANICAL OPENINGS:
GENERAL CONTRACTORS SHALL VERIFY SIZE AND LOCATION OF ALL OPENINGS FOR MECH. TRADES WITH MECH. CONTRACTORS. BEFORE PROVIDING OPENINGS NOT SHOWN ON STRUCTURAL OR ARCHITECTURAL PLANS, OR PROVIDING LARGER (MORE THAN 3" IN EITHER DIRECTION) THAN SHOWN, APPROVAL BY RESIDENT ENGINEER MUST BE SECURED, NO SHIFTING OR CUTTING OF ANY STRUCTURAL MEMBER ALLOWED (REINFORCING INCLUDED).
10. COORDINATE ALL MECHANICAL EQUIPMENT SUPPORT STEEL WITH MECHANICAL EQUIPMENT SUPPLIER.
11. ALL BIDDERS ARE REQUIRED TO VISIT SITE AND FAMILIARIZE THEMSELVES WITH EXISTING CONDITIONS AND ACCESSIBILITY.
12. BEFORE MAKING ANY CUT OUTS, HOLES, OPENING, ETC IN EXISTING STRUCTURE NOTIFY AND REVIEW WITH RESIDENT ENGINEER.
13. REPLACE ALL CONCRETE FIREPROOFING REMOVED OR DAMAGED DURING CONSTRUCTION WITH 4000 PSI CONCRETE. THOROUGHLY CLEAN EXISTING CONCRETE; TREAT WITH BONDING AGENT PER MANUFACTURERS SPECIFICATIONS ; PROVIDE AND SECURE WIRE MESH TO EXISTING STEEL.
14. NEW STEEL USE AS NOTED ON DRAWING COORDINATE WITH MANUFACTURER SPECIFICATIONS, 1/3X3/8 LONG LEG DOWN.
15. FINAL LOCATION OF GRATING TO BE DETERMINED BY COR. QUANTITIES SHOWN FOR BIDDING PURPOSES.



2 ROOF FRAMING
1/4" = 1'0"



3 CONNECTION DETAIL



4 CONNECTION DETAIL

[illegible]

Drawing Title STRUCTURAL PLAN - SHAFT #4	Project Title REPLACE AIR HANDLING UNITS			Project Number 528A7-17-707	SYRACUSE VA MEDICAL CENTER ENGINEERING DEPARTMENT
				Building Number 001	
Approved: Project Director	Location 800 IRVING AVE SYRACUSE NY			Drawing Number S-102	 Department of Veterans Affairs
	Date 03/10/2017	Checked CLA	Drawn KAW		
				Dwg. of	