

three inches = one foot

one and one half inches = one foot

one inch = one foot

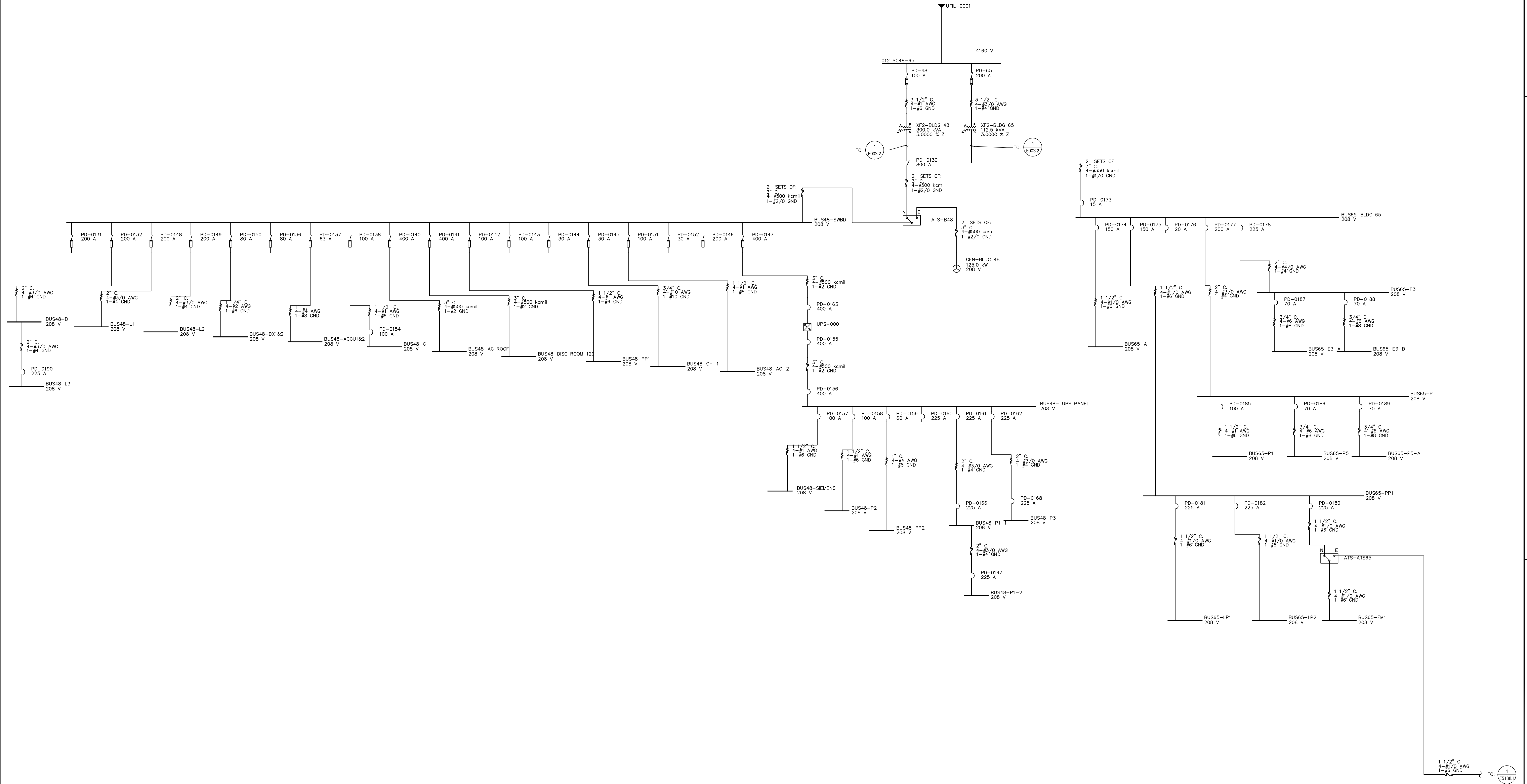
three quarters inch = one foot

one half inch = one foot

three eighths inch = one foot

one quarter inch = one foot

one eighth inch = one foot



**BUILDINGS 48 AND 65 ONE-LINE DIAGRAM**  
E4865.1 SCALE: N.T.S.

		<b>CONSULTANTS:</b>				<b>ARCHITECT/ENGINEERS:</b>		Architect Project No. 003-10025-042		<b>Drawing Title</b> BUILDINGS 48 AND 65 ONE-LINE DIAGRAM		<b>Project Title</b> ST. LOUIS VAMC- JEFFERSON BARRACK DIVISION-MO POWER SYSTEM STUDY		<b>Project Number</b> 101PM2992		<b>Office of Construction and Facilities Management</b>  Department of Veterans Affairs	
						<b>LEO A DAILY</b> <small>PLANNING ARCHITECTURE ENGINEERING INTERIORS EST. 1915</small>		8600 Indian Hills Drive Omaha, NE 68114 USA Tel 402-391-8111 Fax 402-391-8564		<b>Approved Project Director</b>		<b>Location</b> ST. LOUIS, MISSOURI		<b>Building Number</b> -			
				<b>Date</b> 6/15/08								<b>Checked</b> JKN		<b>Drawn</b> DJC			
<b>Revisions</b>		<b>Date</b>															

VA FORM 08-6231, OCT 1978