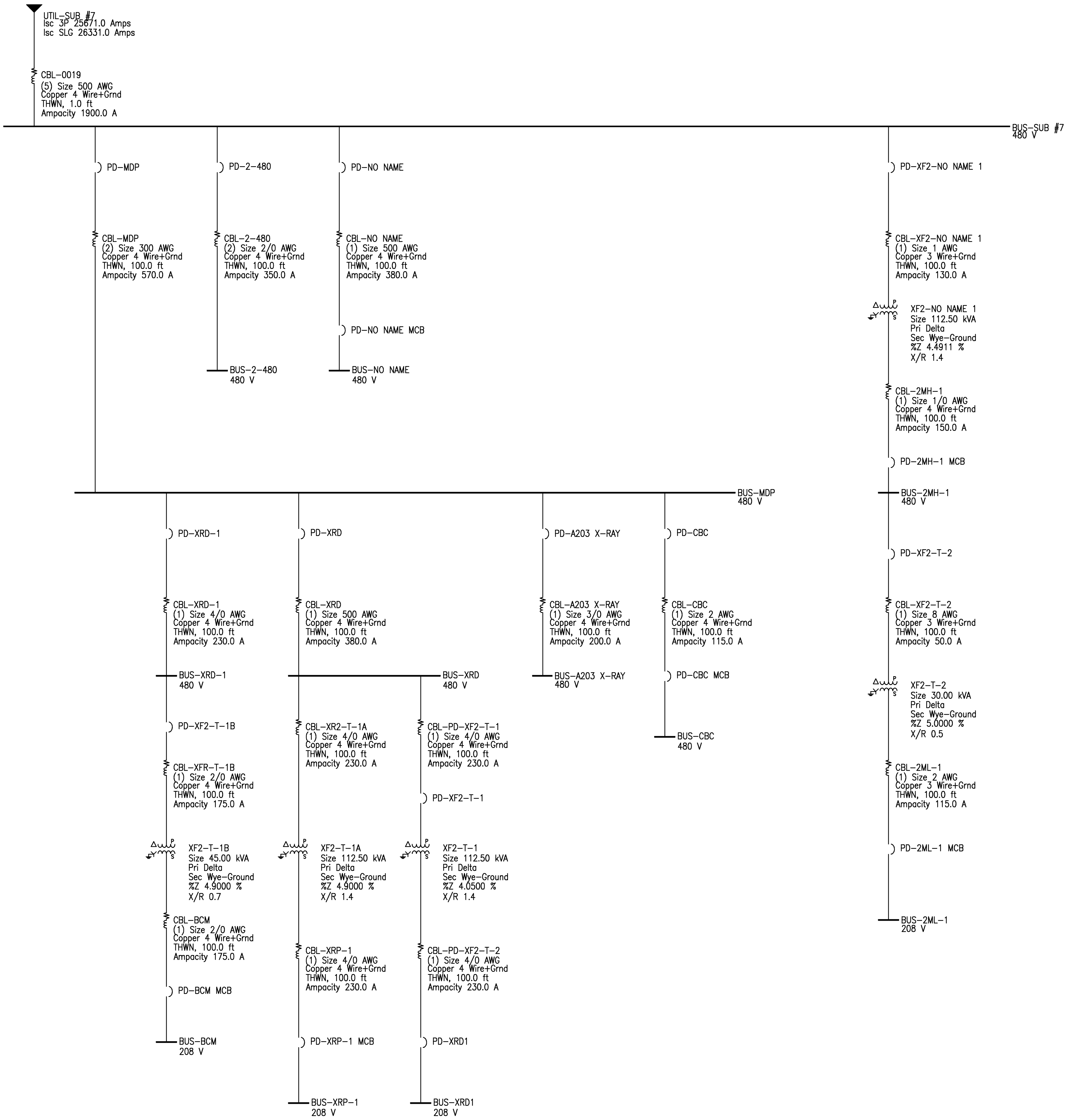


three inches = one foot
one and one half inches = one foot
one inch = one foot
three quarters inch = one foot
one half inch = one foot
one quarter inch = one foot
three eighths inch = one foot
one eighth inch = one foot
one eighth inch = one foot



BUILDING 1 SUBSTATION #7
INPUT DATA
SCALE: N.T.S.

CONSULTANTS:		ARCHITECT/ENGINEERS:		Architect Project No. 003-10025-062	Drawing Title BUILDING 1 SUBSTATION #7 INPUT DATA		Project Title ST. LOUIS VA MEDICAL CENTER JOHN COCHRAN DIVISION		Project Number 101PM2992		Office of Construction and Facilities Management Department of Veterans Affairs	
					Approved Project Director		Location 915 NORTH GRAND BLVD. ST. LOUIS, MO 63106		Building Number 1			
Revisions							Date 06/23/09		Checked GCD			Drawn NJD
Date				Suite 1100, 730 Second Avenue South Minneapolis, MN 55402-2455 USA Tel 612-338-6741 Fax 612-338-4840				Drawing Number E3.1		Dwg. 14 of 27		