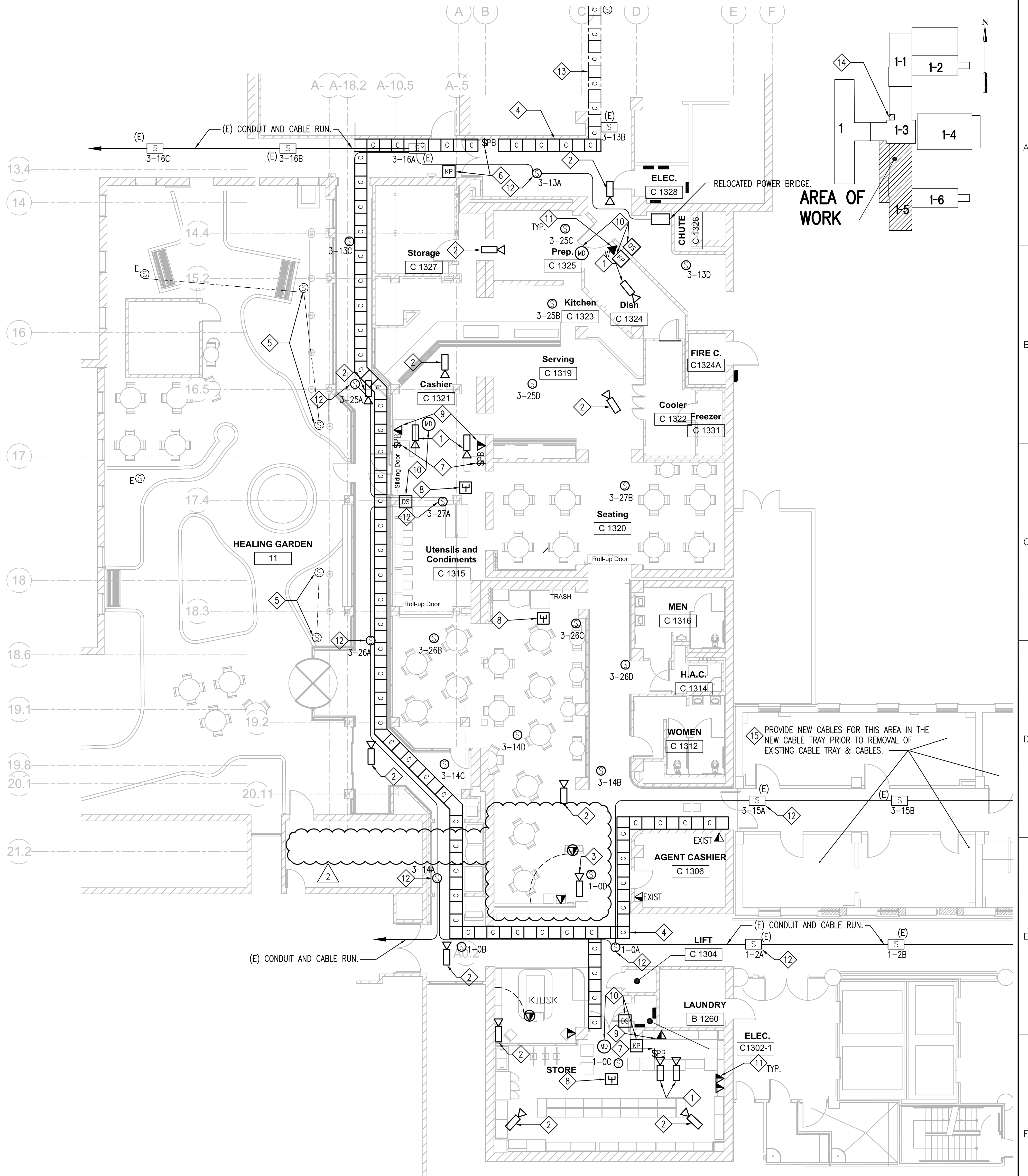


three inches = one foot
one inch = one foot
one and one half inches = one foot
one inch = one foot
three quarters inch = one foot
one half inch = one foot
three eighths inch = one foot
one quarter inch = one foot
one eighth inch = one foot
one eighth inch = one foot

SHEET NOTES

- 1 FIXED CAMERAS MOUNTED ABOVE CASH REGISTERS.
- 2 PAN & TILT CAMERA
- 3 ALTERNATE LOCATION FOR PAN & TILT CAMERA
- 4 INSTALL NEW 12" WIDE x 6" DEEP LADDER TYPE CABLE TRAY ABOVE NEW CORRIDOR CEILINGS FOR NEW DATA/TELEPHONE CABLES. CONNECT TO EXISTING CABLE TRAY. REPLACE EXISTING DATA/ TELEPHONE CABLES AS NEEDED FOR NEW CABLE TRAY ROUTING.
- 5 RELOCATE EXISTING ROCK SPEAKERS TO NEW PLANTER AREA. VERIFY LOCATION IN THE FIELD. RECONNECT TO EXISTING SPEAKER SYSTEM.
- 6 ADD 3/4" CONDUIT TO ABOVE CEILING FOR FUTURE ACCESS CONTROL.
- 7 PANIC BUTTON, RUN CAT 6 TO IT CLOSET JUNCTION BOX, 10' OF CABLE COILED.
- 8 WIRE-LESS WIFI, RUN CAT 6 TO IT CLOSET JUNCTION BOX.
- 9 WIRE-LESS RAPTOR SYSTEM.
- 10 CONNECT NEW DOOR SWITCHES, KEYPADS AND MOTION DETECTOR INTO EXISTING SECURITY SYSTEM.
- 11 RUN 4 PAIR UTP CAT 6 CABLE BACK TO EXISTING SERVER ROOM 2A VIA CABLE TRAY; 1" C IN WALLS & TO TRAY.
- 12 SPEAKER W/ PAM UNIT. SHEET ET1.0.2 FOR SPEAKER SINGLE LINE.
- 13 USE EXISTING CABLE TRAY FOR CABLE RUNS TO EXISTING SERVER ROOM 2A.
- 14 APPROXIMATE LOCATION OF EXISTING SERVER ROOM 2A. VERIFY EXACT CABLE ROUTING, LENGTHS, CONNECTIONS IN THE FIELD.
- 15 VERIFY EXACT QUANTITIES, LOCATIONS, ROUTING, CABLE LENGTHS, ETC. IN THE FIELD.

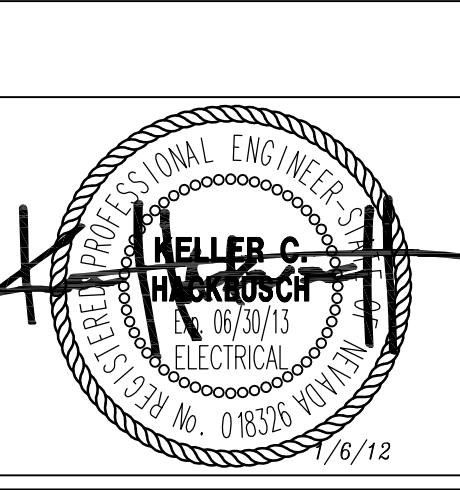


TELE-COMM PLAN - GROUND FLOOR
AREA 1-5
SCALE: 1/8" = 10'

Revisions:	Date
1	25 JAN 2012
2	24 MAY 2012
3	
4	
5	
6	
7	
8	
9	
10	
11	
12	
13	
14	
15	
16	

CONSULTANTS:

DINTER
ENGINEERING CONFIDENCE
Airfield Electrical Mechanical
385 Gentry Way
Reno, NV 89502
Ph: 775.826.4044
Fax: 775.826.4190
www.dinter.com J-4217.6



ARCHITECT/ENGINEERS:

VMDA
vern martin design associates
(a Nevada Corporation)
Food Facilities Design
760 Robin St., Reno, Nevada 89509
P: (775) 240-2637 F: (775) 201-0066
E: vern@martinreno.com

VanWoert Bigotti
architects
1400 s. virginia st suite c
reno, nevada 89502
p: 775.328.1010
f: 775.328.1020
info@vwarchitects.com

Drawing Title
GROUND FLOOR TELECOMM PLAN

Approved Project Director

Project Title
VA SIERRA NEVADA HEALTH CARE
SYSTEM - CANTEN RELOCATION
DESIGN - , RENO, NEVADA

Location
975 KIRMAN AVE, RENO, NEVADA 89502

Date
25 JAN, 2012

Checked
ERG

Drawn
MWB

Project Number
654-11-227

Building Number
1

Drawing Number
ET 1.0.1

Dwg. X of X

Office of
Construction
and Facilities
Management

Department of
Veterans Affairs