

one eighth inch = one foot
0 8 16

one quarter inch = one foot
0 4 8

three eighths inch = one foot
0 4 8

one half inch = one foot
0 4

three quarters inch = one foot
0 4 8

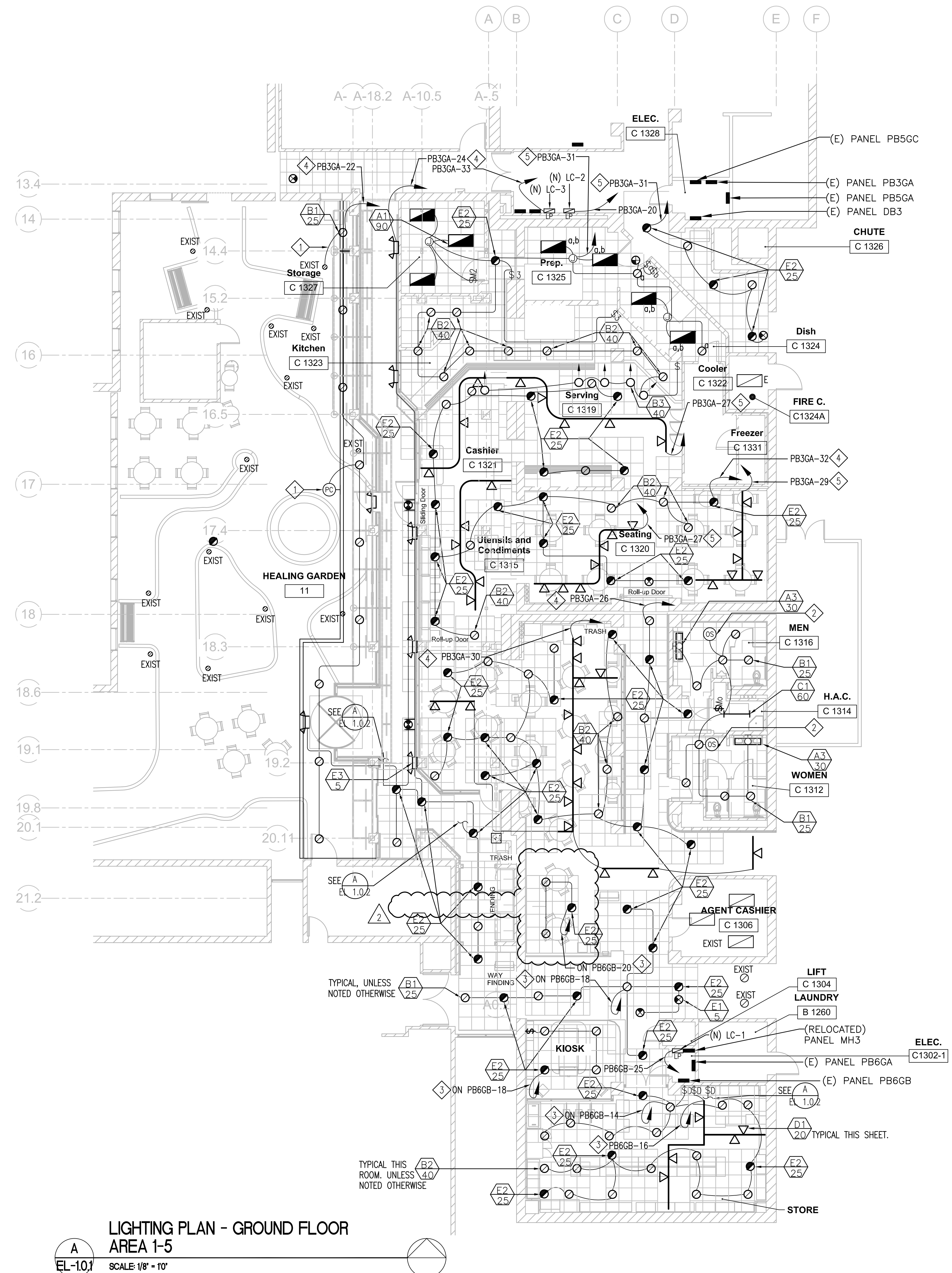
one inch = one foot
0 6"

one and one half inches = one foot
0 6"







two inches = one foot
0 6"

three inches = one foot
0 6"

- 2



A
EL-1.0,

	24 MAY 2012	CONSULTANTS:  DINTER ENGINEERING CONFIDENCE Airfield Electrical Mechanical 385 Gentry Way Reno, NV 89502 Ph: 775.826.4044 Fax: 775.826.4190 www.dinter.com J-4217.6		ARCHITECT/ENGINEERS:  vern martin design associates (a Nevada Corporation) Food Facilities Design 760 Robin St., Reno, Nevada 89509 P: (775) 240-2637 F: (775) 201-0066 E: vern@martinreno.com	 VanWoert Bigotti architects <small>1600 S. Virginia St Suite C reno, nevada 89502 p: 775.328.1010 f: 775.328.1020 info@vanwoertbigotti.com</small>	Drawing Title GROUND FLOOR DOWN LIGHTING PLAN	Project Title VA SIERRA NEVADA HEALTH CARE SYSTEM - CANTEN RELOCATION DESIGN - , RENO, NEVADA	Project Number 654-11-227	Office of Construction and Facilities Management  Department of Veterans Affairs			
						Building Number 1	Drawing Number EL 10.1	Date 25 JAN, 2012		Checked ERG	Drawn MWB	Dwg. X of X
	Revisions:					Date	Approved Project Director	Location 975 KIRMAN AVE, RENO, NEVADA 89502				

VA FORM 08-6231