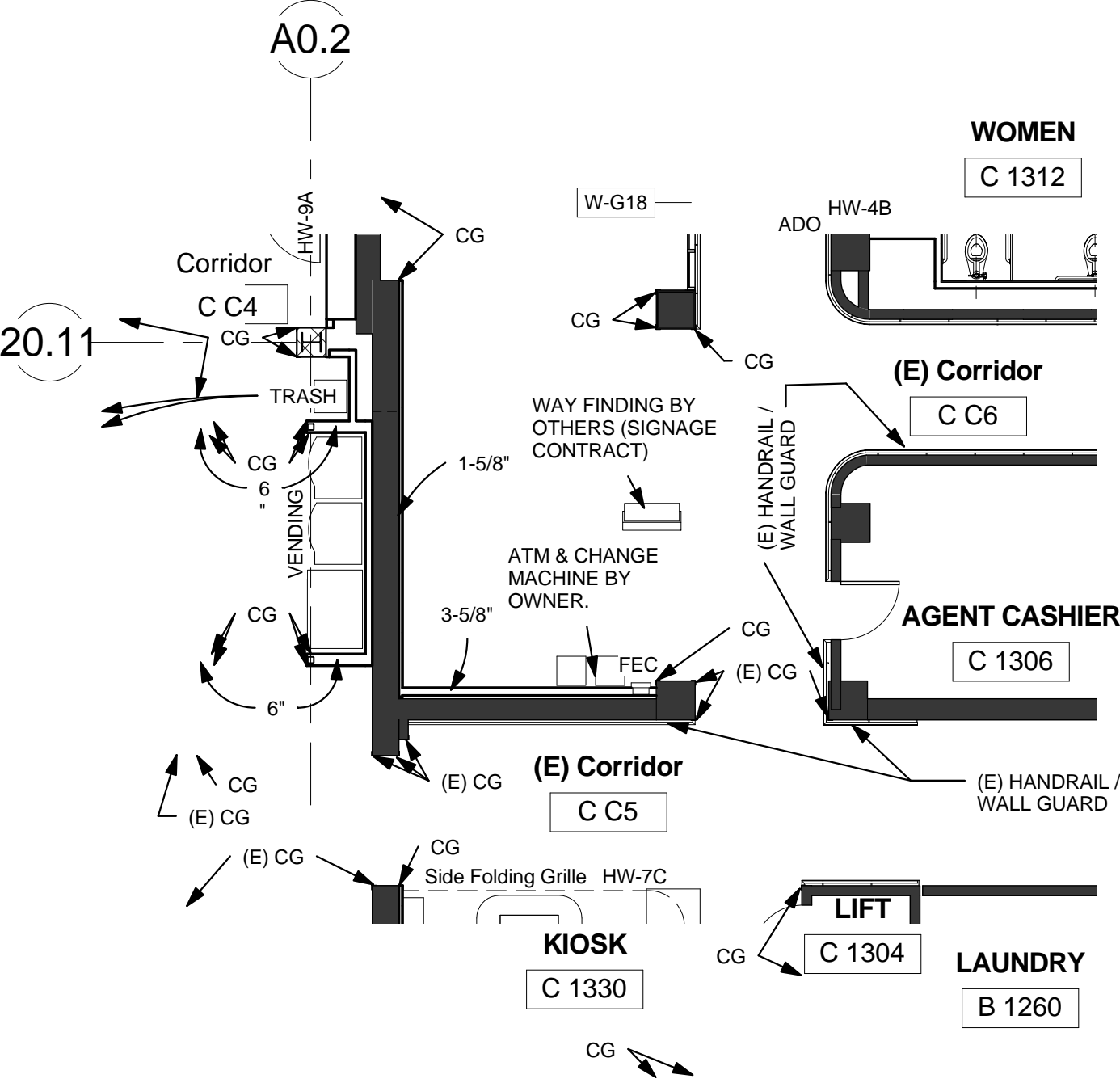
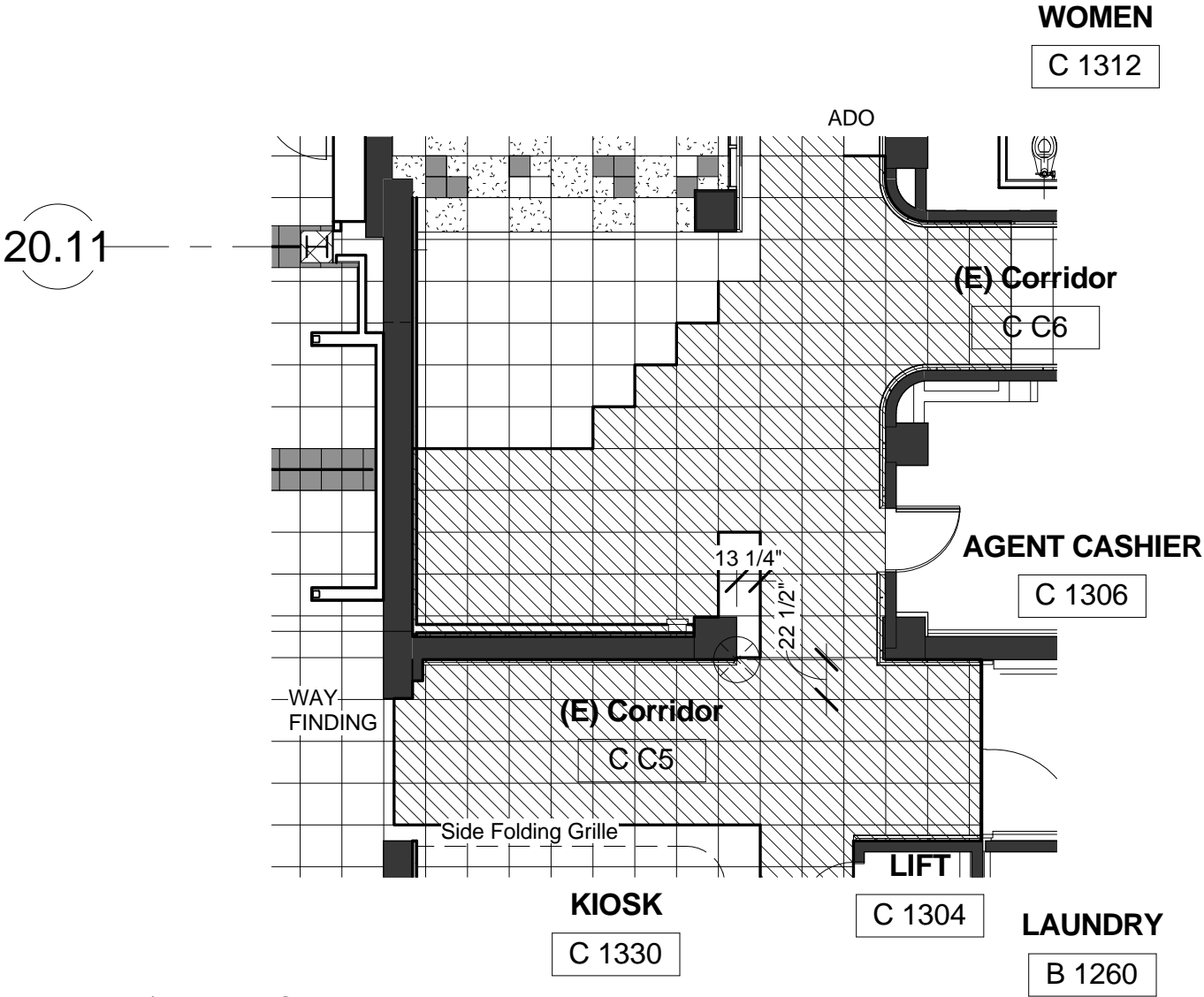


TILE PATTERN LEGEND

- PPT-1 24"x24" PORCELAIN TILE - DAL TILE : FLORENZA
COLOR - BRUN
- PPT-3 24"x24" PORCELAIN TILE - DAL TILE : FLORENZA
COLOR - SABBIA
- PPT-2 12"x12" PORCELAIN TILE - DAL TILE : FLORENZA
COLOR - AZZURRO
- PPT-3 12"x12" PORCELAIN TILE - DAL TILE : FLORENZA
COLOR - SABBIA
- PPT-1 12"x12" PORCELAIN TILE - DAL TILE : FLORENZA
COLOR - BRUN



2 Revised 1/1-AE1.1, Ground Floor-TILE
PATTERN without Barber room C 1307
1/8" = 1'-0"

1 Revised 1/1-AE1.0, Plan Deleting Barber
1/8" = 1'-0"

construction and materials shall comply
with 2006 international building code
(ibc).
the design and drawings contained
herein are protected under n.r.s. 623
and use copyright title 17.
unauthorized duplication or distribution
is a violation of state and federal law.

drawn: Author
checked: Checker

VA SIERRA NEVADA HEALTH CARE SYSTEM -
CANTEEN RELOCATION DESIGN - RENO, NEVADA
975 KIRMAN AVE., RENO, NEVADA 89502

drawing title:
Modify 1-AE1.0 and
1-AE1.1 to Delete
Barber, C1307

job number:
654-11-227

date:
05/24/12

clarification drawing number: