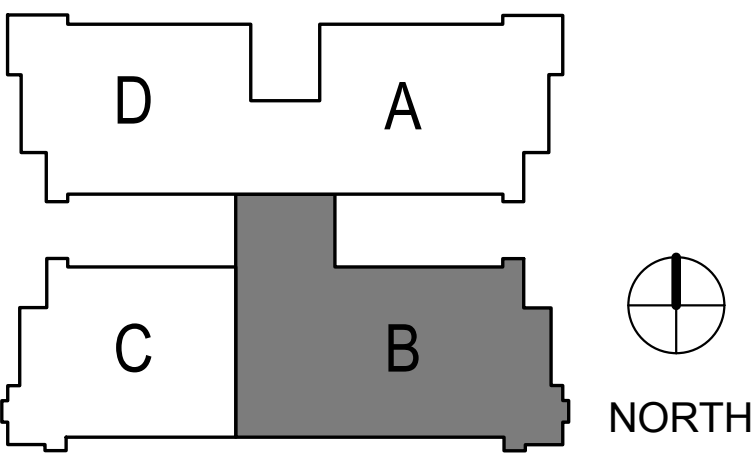


SHEET NOTES

- SHEET NOTES APPLY TO ALL FLOOR PLAN SHEETS AND THEREFORE INDIVIDUAL NOTES MAY NOT APPLY TO ALL SHEETS.
- A. REFER TO SHEET AG-001 FOR ARCHITECTURAL DRAWING REFERENCE, MATERIAL SYMBOLS, GENERAL NOTES AND ABBREVIATIONS USED ON THIS DRAWING.
- B. REFER TO SHEET G-001 FOR PROJECT GENERAL NOTES.
- C. VERIFY LOCATIONS OF ALL STRUCTURAL SLAB PENETRATIONS WITH ARCHITECT/ENGINEER PRIOR TO PLACEMENT. CONTRACTOR SHALL VERIFY FLOOR SLABES AND CORES FOR PLUMBING PENETRATIONS WITH STRUCTURAL ENGINEER PRIOR TO PLACING FLOOR SLABES. ALL VERTICAL SLEEVES SHALL EXTEND 1'-1 1/2" A.F.F.
- D. REFER TO THE INTERIOR FINISH PLANS IN "AF" SERIES DRAWINGS FOR APPLIED FINISH (INCLUDING WALL PROTECTION) AND COLOR INFORMATION.
- E. REFER TO "AD" SERIES DRAWINGS FOR LOCATIONS OF ALL EQUIPMENT REQUIRING INFRASTRUCTURE. PROVIDE BLOCKING AS NEEDED FOR THE SUPPORT AND MOUNTING OF INDICATED EQUIPMENT. REFER TO AE-601 SERIES SHEETS FOR ADDITIONAL INFO ABOUT BLOCKING / FRAMING.
- F. REFER TO PARTITION NOTES AND SCHEDULE FOR DETAILS AND INFORMATION RELATING TO PARTITION SYSTEMS. REFER TO AE-601 SERIES OF SHEETS.
- G. ALL MTL. STUD FRAMED PARTITIONS, INCLUDING MTL. STUD FURRING, REQUIRED TO HAVE ACOUSTICAL OR THERMAL (EXTERIOR WALL FURRING/PARTITIONS) BATT INSULATION SHALL EXTEND TO THE UNDERSIDE OF STRUCTURAL DECK ABOVE.
- H. REFER TO DOOR AND FRAME SCHEDULE FOR INFORMATION ABOUT ALL DOORS AND INTERIOR OPENING FRAMES. REFER TO AE-610 SERIES DRAWINGS.
- J. REFER TO DOOR AND FRAME SCHEDULE FOR DOORS REQUIRING CARD ACCESS AND/OR ADA ACCESS CONTROL STATIONS. COORDINATE LOCATION OF ALL STATIONS WITH ARCHITECT PRIOR TO INSTALLATION OF EQUIPMENT AND PRIOR TO ROUTING OF ELECTRICAL.
- K. REFER TO EXTERIOR WINDOW/DOOR ELEVATION SHEETS FOR INFORMATION ABOUT ALL EXTERIOR FRAMES. SEE AE-620 SERIES DRAWINGS. INFORMATION REGARDING THE DOORS LOCATED IN EXTERIOR FRAMES ARE FOUND IN THE 4-A9.3. SERIES DOOR AND FRAME SCHEDULE.
- L. ROOFS SHALL SLOPE 1/4" PER FT. MIN. RIGID INSULATION AS COMPONENT OF ROOFING ASSEMBLY SHALL BE R-30 MINIMUM. ALL ROOF CRICKETS SHALL BE FORMED WITH TAPERED INSULATION.
- M. CONTRACTOR SHALL PROVIDE ROOF WALKPADS TO MECH. EQUIPMENT ACCESS / SERVICE LOCATIONS.
- N. EXTERIOR ELECTRICAL / MECHANICAL EQUIPMENT SHALL BE PLACED ON C.I.P. CONCRETE EQUIPMENT PADS. CONTRACTOR SHALL COORDINATE PAD SIZE WITH EQUIP. MFR.
- O. TYPICAL WALL TYPE IS OA3 AND TYPICAL COLUMN FURRING IS OF3 UON. THE DIMENSIONS OF THE COLUMN SURROUNDS ARE THE BE 1'-0" OFF OF THE GRIDLINE TO FINISH FACE OF GYP BD UNLESS NOTED OTHERWISE.
- P. REFER TO AE-100 AND AE-400Y SERIES DRAWINGS FOR ENLARGED PLAN AND INTERIOR ELEVATION REFERENCES.
- Q. ALL PENETRATION INTO EXISTING CONCRETE SLAB SHALL BE FIRE SEALED PER UL RATED ON 1/2" SERIES.

ROOM DESIGNATION

Number	Name	Number	Name	Number	Name
6B-101	WHEEL CHAIR	6B-168	WC	6B-123	VESTIBULE
6B-102	WC	6B-170	WC	6B-124	STAIR #2
6B-103	PATIENT ROOM	A		6B-122	MECH ROOM
6B-104	PATIENT ROOM	6B-165	WC		
6B-106	WC	6B-196	NURSE STATION	6B-100	EXTERIOR PATIO
6B-105	WC	6B-193	MED ROOM	A	
6B-108	PATIENT ROOM	6B-192	HOUSE KEEPING	6B-138	HALL
6B-109	PATIENT ROOM	6B-191	STAFF TLT	6B-103	PASSAGEWAY
6B-112	PATIENT ROOM	6B-171	PHYSICIAN TRAINING	6B-160	VEST.
6B-113	PATIENT ROOM			6B-161	CORR.
6B-116	PATIENT ROOM	6B-172	STORAGE CLOSET	6B-197	COMM
6B-117	PATIENT ROOM	A		6B-156	SALLY PORT
6B-121	PATIENT ROOM	6B-173	SOILED	6B-155	INTAKE / INTERVIEW
6B-127	PATIENT ROOM	6B-175	CLEAN		
6B-139	PATIENT ROOM	6B-174	EXAM ROOM	6B-162	NURSE MGR
6B-143	PATIENT ROOM	6B-176	STAFF TLT	6B-156	SALLY PORT
6B-144	PATIENT ROOM	6B-177	SECLUSION ROOM	6B-157	LOBBY/ CORR.
6B-147	BARIATRIC PATIENT ROOM	6B-187	WOMENS PARLOR	6B-158	PUBLIC WC
6B-148	ADA PATIENT ROOM	6B-188	PAT EFFECTS STORAGE	6B-169	CORRIDOR
6B-152	ADA/ISO PATIENT ROOM	6B-186	FITNESS	6B-194	CORRIDOR
6B-153	BARIATRIC PATIENT ROOM	6B-185	KITCHENETTE	6B-184	OT/ RT
6B-166	DOUBLE PATIENT ROOM	6B-178	SECLUSION ROOM	6B-190	STOR
6B-167	DOUBLE PATIENT ROOM	6B-180	WC	6B-190	TV/DVD
6B-170	DOUBLE PATIENT ROOM	6B-179	ANTE ROOM	6B-190	ICE
6B-159	MED DIR	6B-181	NURSE LOUNGE	6B-195	Room
6B-154	BARIATRIC WC	6B-182	WORK TEAM	6B-163	OT/RT
6B-149	ADA WC	6B-190	TV/DVD	6B-190	Room
6B-150	ADA WC	B		D	
6B-145	WC	6B-151	CORRIDOR	6B-190	Room
6B-146	WC	6B-120	CORRIDOR	E	
6B-132	PATIENT ROOM	6B-189	GROUP ROOM	6B-172	EQUIP CLOSET
6B-140	WC	6B-135	PATIENT ROOM	B	
6B-141	WC	6B-136	PATIENT ROOM	6B-172	STOR. CLOSET
6B-137	ELEC	6B-126	PT LAUNDRY	A	
6B-136	TEL	6B-125	HAC	6B-190	DINING/ DAY ROOM
6B-119	WC	6B-128	WC	6B-190	DINING/ DAY ROOM
6B-118	WC	6B-129	WC	6B-198	Room
6B-115	WC	6B-133	WC	6B-100	VESTIBULE
6B-114	WC	6B-134	WC	B	
6B-110	WC	6B-142	CORRIDOR		
6B-111	WC	6B-183	EXTERIOR COURTYARD		



BID SET

SIXTH DIMENSION PLAN - QUAD B

1/8" = 1'-0"

CONSULTANTS:

SEAL:

ARCHITECT/ ENGINEERS:

SMITHGROUP
architecture engineering interiors planning
SMITHGROUP, INC.
455 North Third Street
Suite 250
Phoenix, Arizona 85004
T 602.265.2200
F 602.265.2244
www.smithgroup.com

Drawing Title:
**SIXTH LEVEL - DIMENSION
FLOOR PLAN - QUAD B**

Approved: Project Director

Project Title
**VAMC-ALBUQUERQUE
ACUTE PSYCHIATRIC UNIT**

Location
ALBUQUERQUE, NEW MEXICO

Date
07/03/14

Checked
SA

Drawn
FAMH

Project Number
501-325

Building Number
41

Drawing Number

41-AE-162

Dwg. of

Office of
Construction
and Facilities
Management



Department of
Veterans Affairs

SECLUSION ROOM PADDING PHOTOS OF EXISTING ROOMS



Image 1: Seclusion Room 6B-178 Entrance West Wall

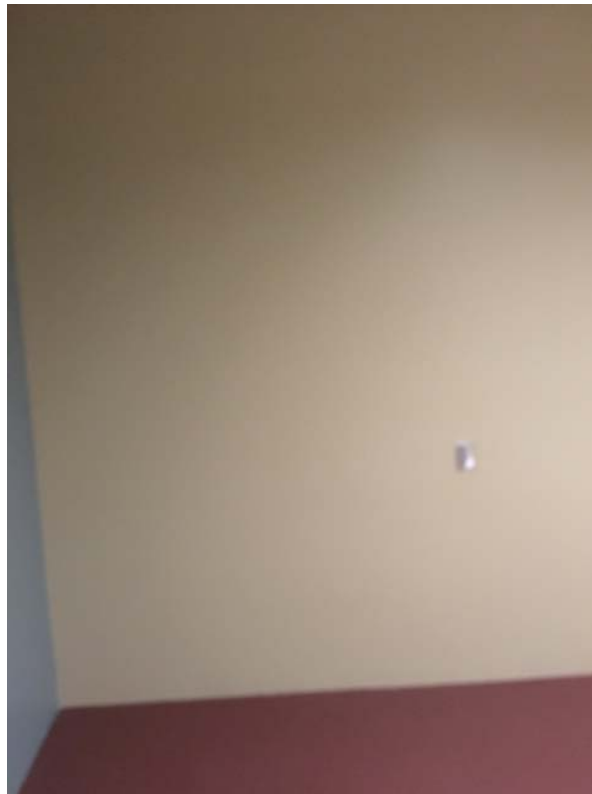


Image 2: Seclusion Room 6B-178 South Wall

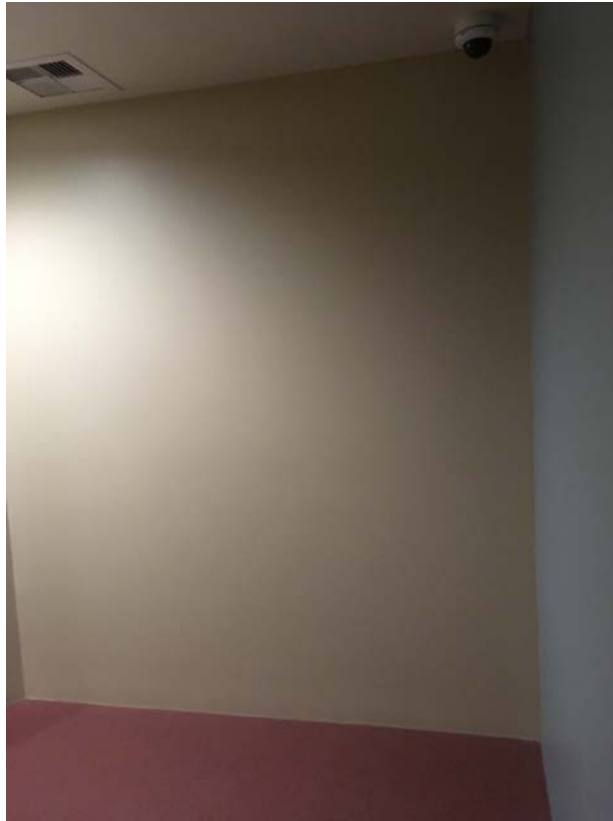


Image 3: Seclusion Room 6B-178 North Wall



Image 4: Seclusion Room 6B-177 Entrance East



Image 5: Seclusion Room 6B-177 South Wall



Image 5: Seclusion Room 6B-177 South/West Wall