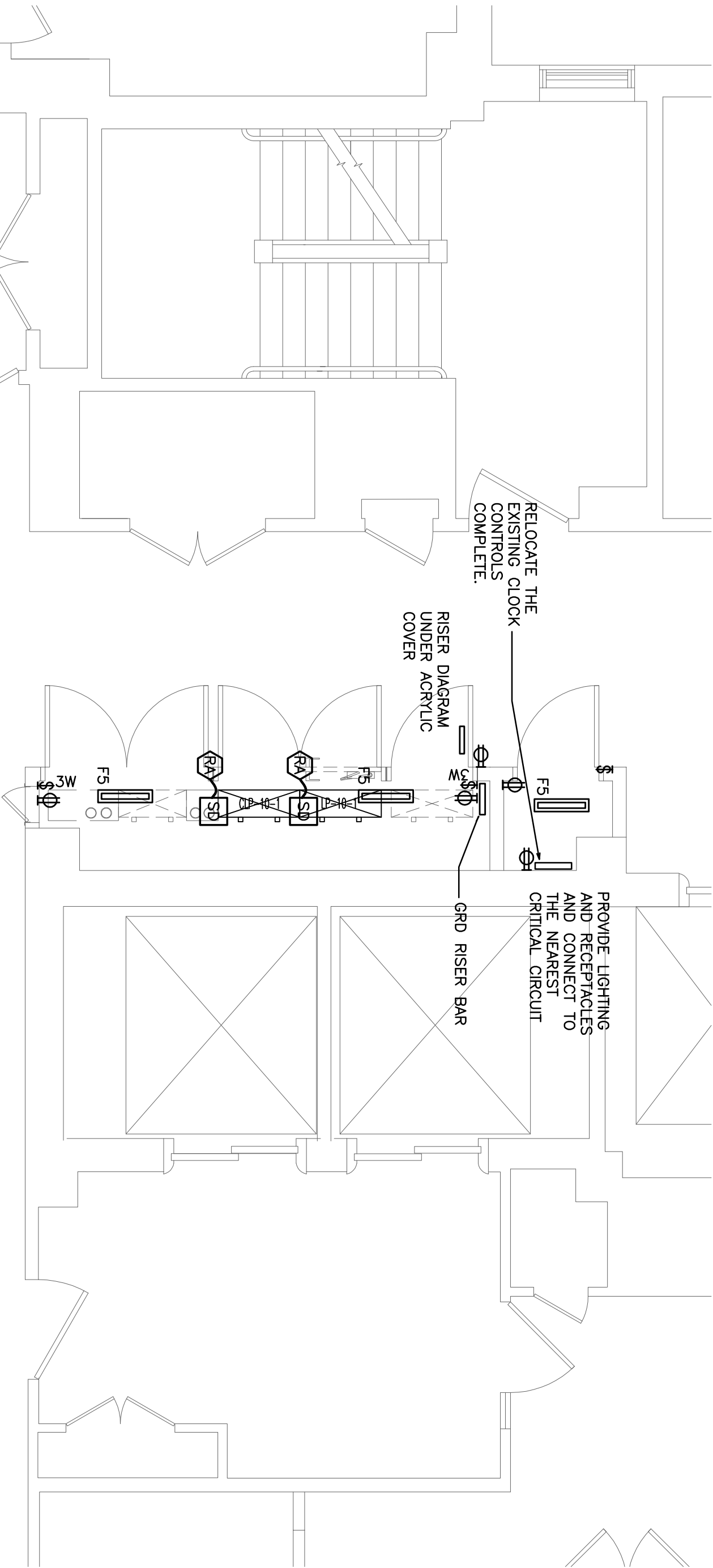
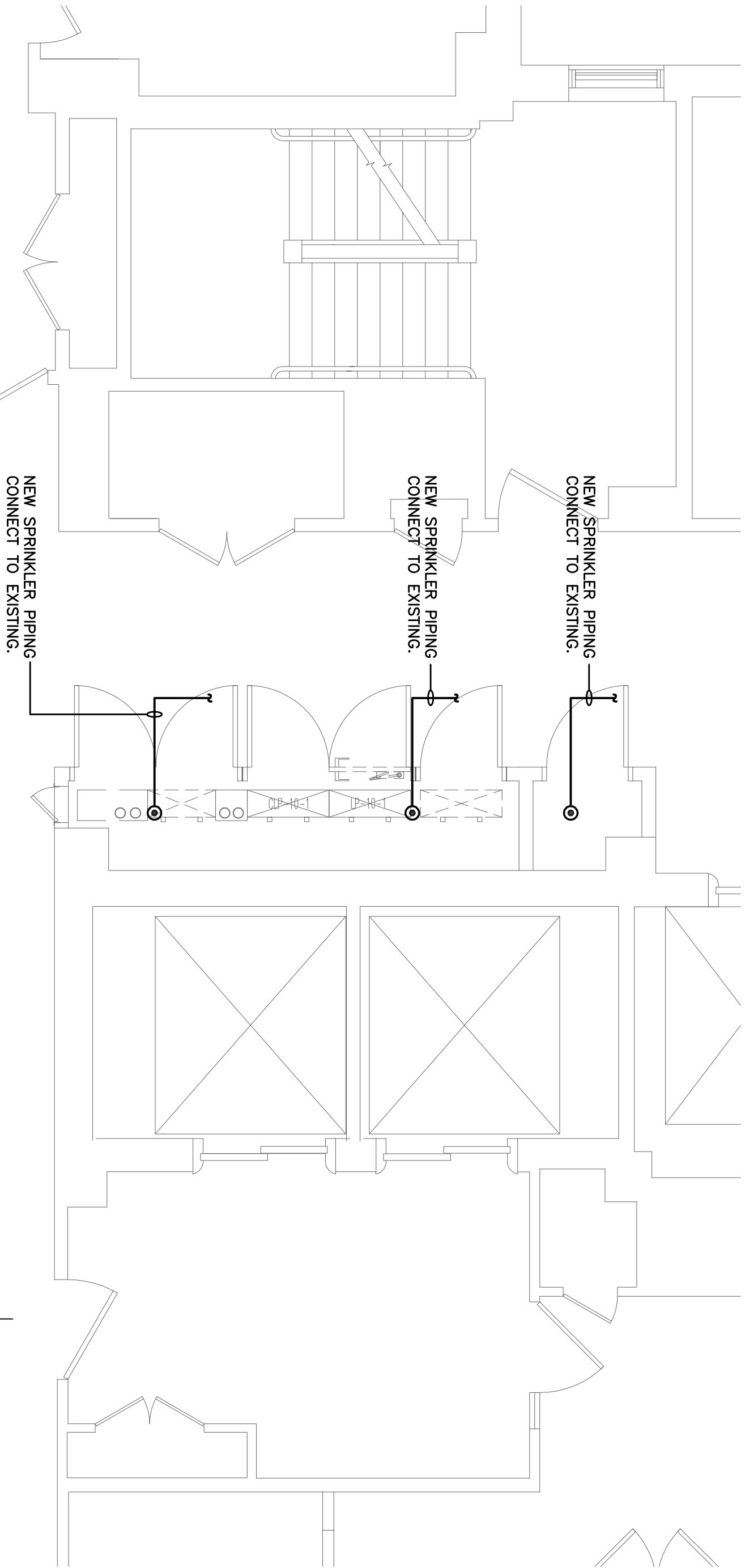


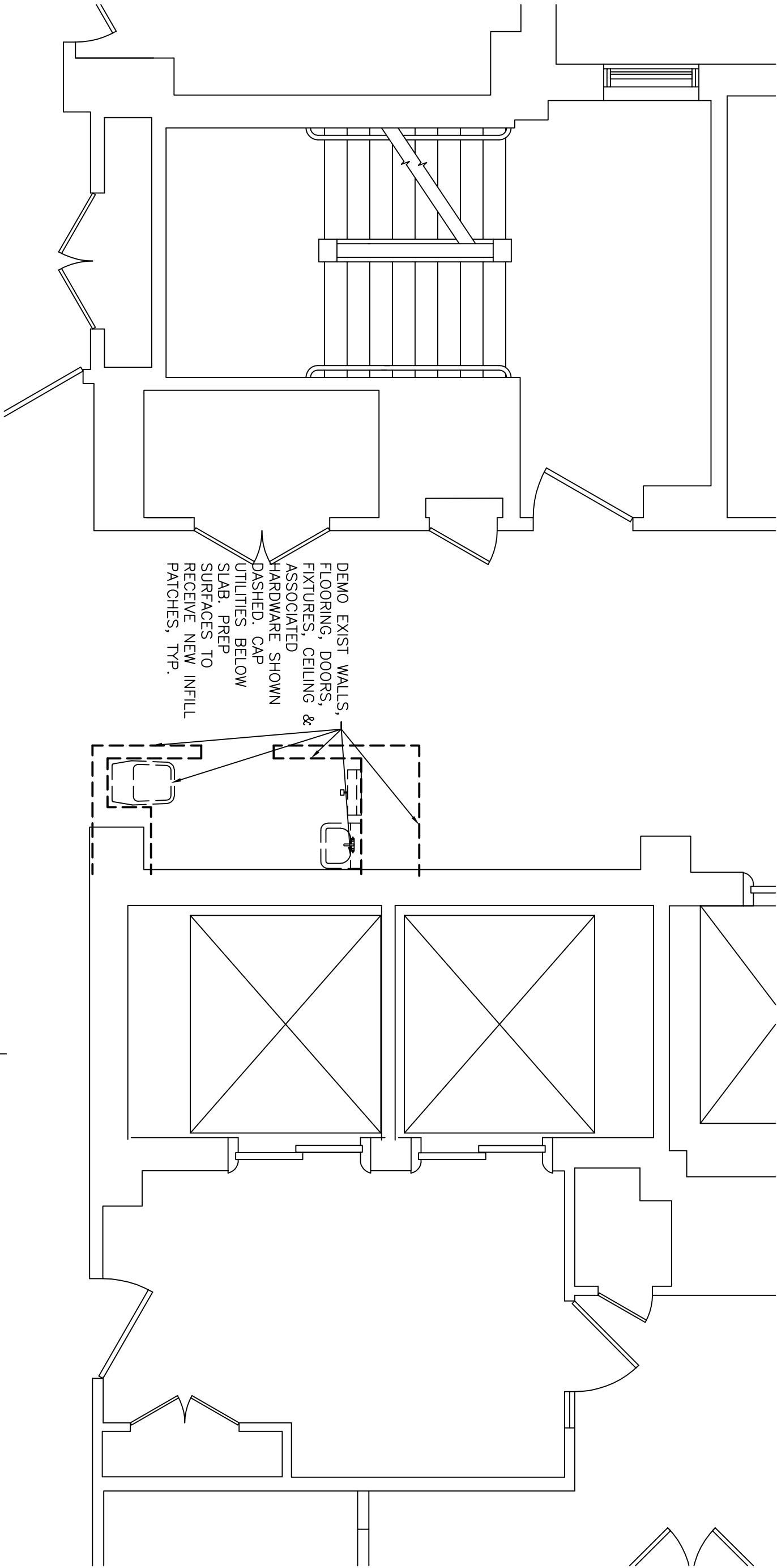
1 ENLARGED TENTH FLOOR PLAN
1/4" = 1'-0"



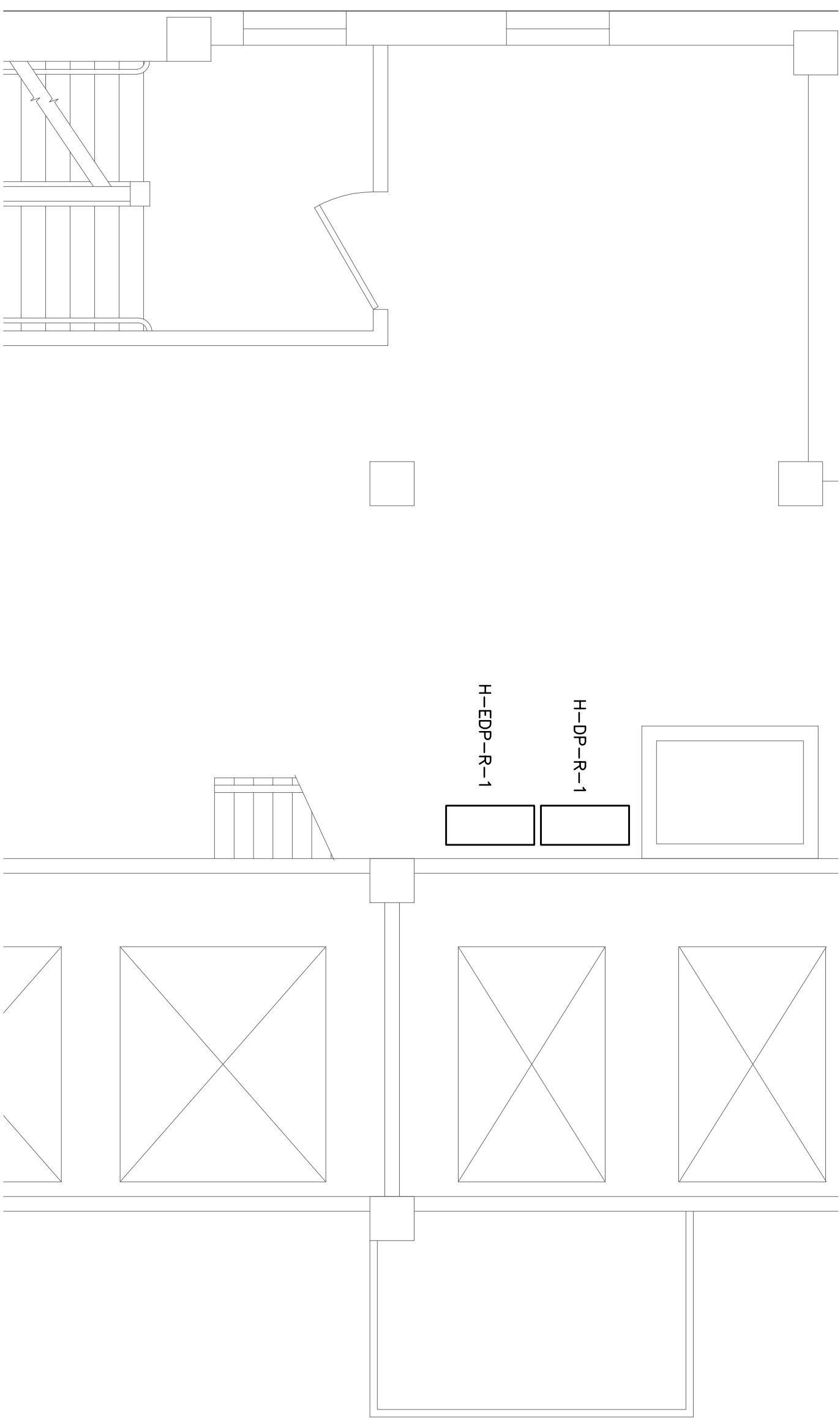
2 ENLARGED 10th FLR. ELECTRICAL PLAN
1/4" = 1'-0"



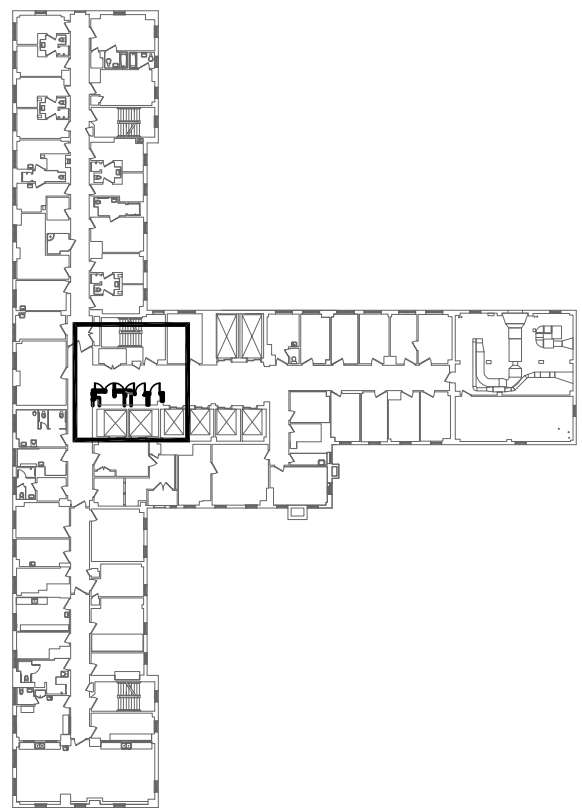
3 ENLARGED 10th FLR. FIRE PROTECTION PLAN
1/4" = 1'-0"



4 ENLARGED 10th FLR. DEMOLITION PLAN
1/4" = 1'-0"



2B PARTIAL ENLARGED PENTHOUSE ELECTRICAL PLAN
1/4" = 1'-0"



BUILDING 1 - 10th FLR. KEY PLAN
N.T.S.

COMPLETION ITEM NO.
FULLY SPRINKLERED

CONSULTANTS:		ARCHITECT/ENGINEERS:		Drawing Title		Project Title		Office of Construction and Facilities Management	
ADDENDUM	5/24/2012	TENG & ASSOCIATES, INC.		TENTH FLOOR PLAN		EMERGENCY POWER DISTRIBUTION - BLDG 1		537-11-139	
ISSUED FOR SOLICITATION	4/28/2012	255 N. LAKEVIEW AVE., CHICAGO, IL 60601		Approved Project Director		Location		Building Number	
100% COORDINATION	2/15/2012	TELEPHONE: 312/616-0000		JESSE BROWN V.A.M.C.		Date		1C	
100% DESIGN SUBMITTAL REVIEW	2/15/2012					FEBRUARY 1, 2012		Drawn	
70% DESIGN SUBMITTAL REVIEW	11/13/2012							JJC	
SCHEMATIC DESIGN SUBMITTAL	10/29/2011							Dwg 12 of 17	
Revisions	Date								