

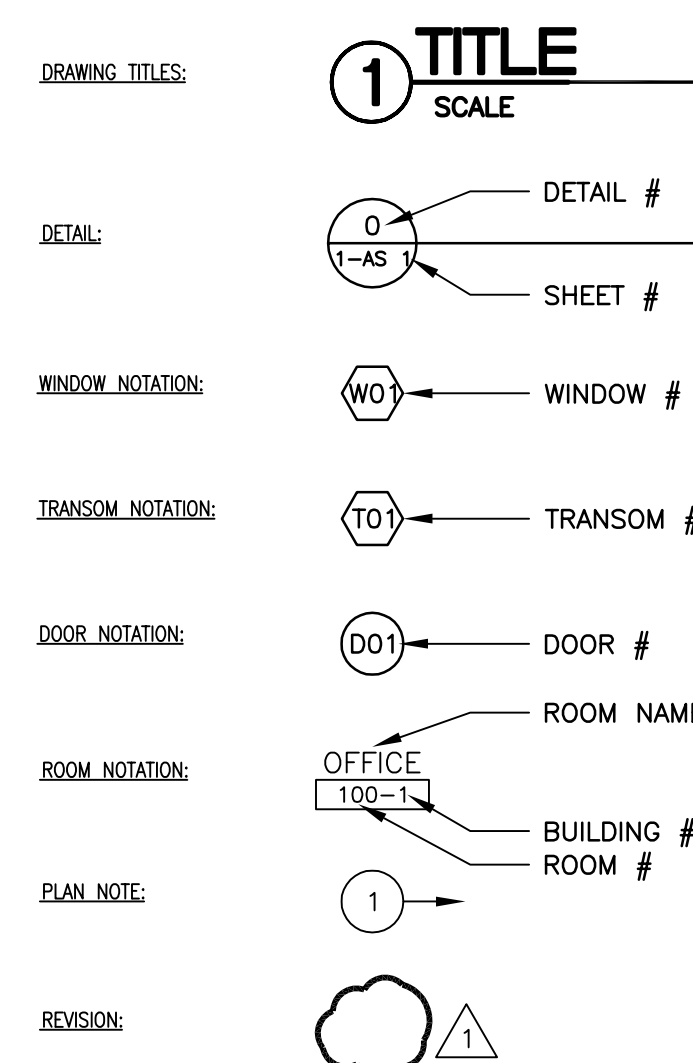
RENOVATE BACKFILL OF BUILDING 26

PROJECT NO. #589A7-16-102

ISSUED FOR BIDDING - DECEMBER 9, 2016

DEPARTMENT OF VETERANS AFFAIRS MEDICAL and REGIONAL OFFICE CENTER WICHITA, KANSAS

STANDARD SYMBOLS LIST



ABBREVIATIONS

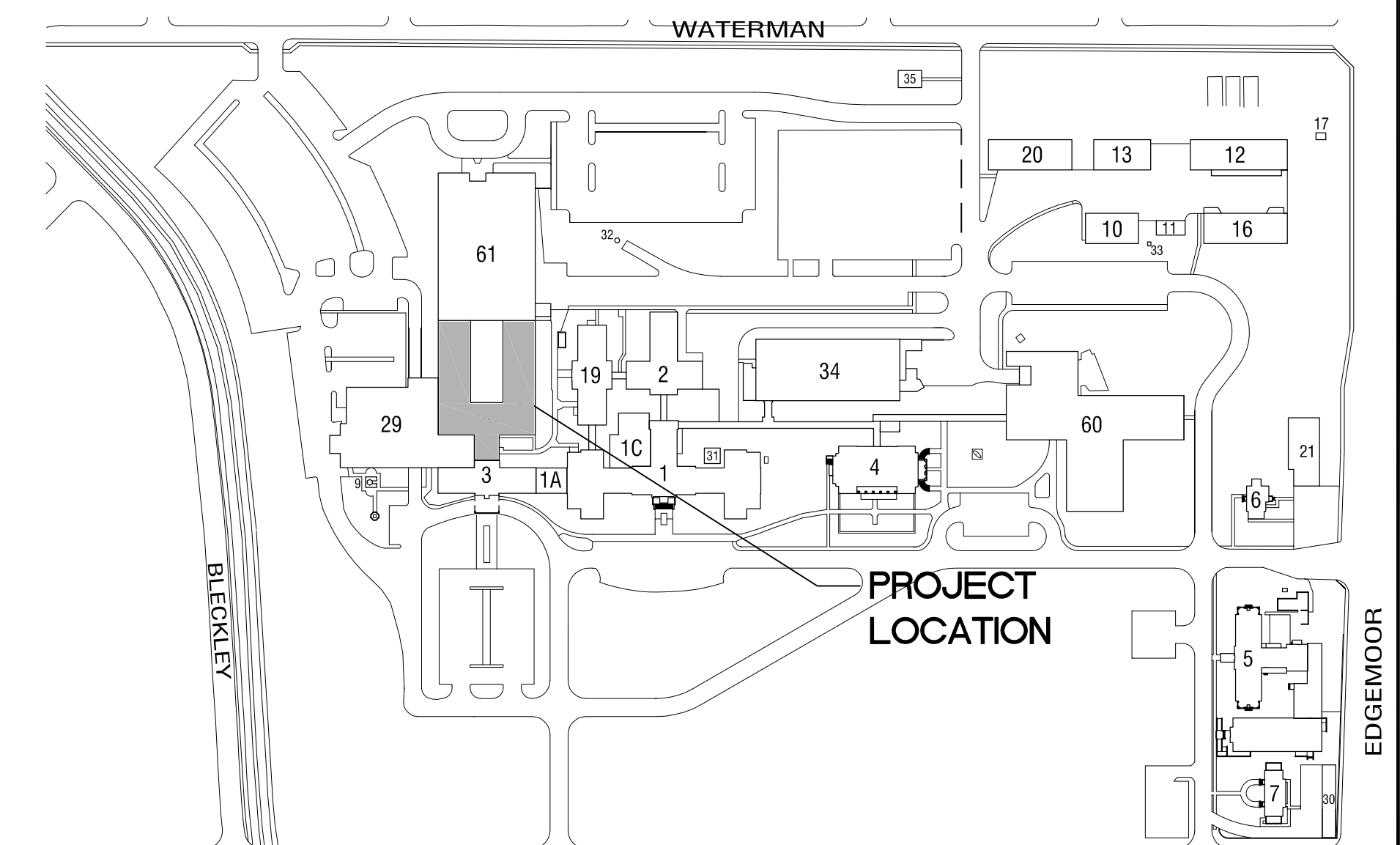
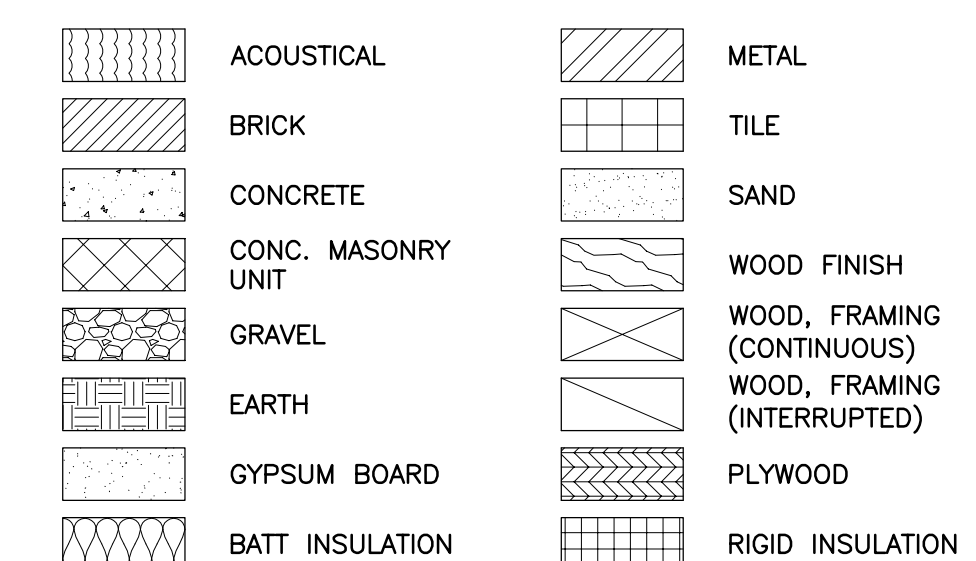
AB anchor bolt	ENT entrance	OC on center(s)
ABV above	EQ equal	OD outside diameter
A/C air conditioning	EQUIP equipment	OPNG opening
ACM asbestos containing material	EXIST existing	OPP opposite
ADJ adjustable/adjacent	EXT exterior	PL plate/property line
AFT above finish floor	FA fresh air/fire alarm	P LAM plastic laminate
ALUM aluminum	FDN foundation	PLBG plumbing
ALT alternate	FIN finish	PLF pounds per linear ft.
ANCH anchor	FLR floor	PWD plywood
APPROX approximate	FT (') foot	PNL panel(ing)
ARCH architect(ural)	FTG footing	PNT point(ed)
BD board	GA gage/gauge	PSF pounds per sq ft
BLDG building	GC general contractor	PSI pounds per sq in.
BM beam/bench mark	GYP gypsum	PVC polyvinyl chloride
BOTT bottom	HDBD hard board	RA(O) return air (grill)
BUR built-up roofing	HDW hardware	RD roof drain
CAB cabinet	HWD hardwood	REG register
C/C center to center	HM hollow metal	REQ'D required
CF cubic feet	HORIZ horizontal	REV revised/revision/
CJ construction joint	HT (') high (height)	reverse
CLJ control joint	ID inside diameter	RM room
CL center line	IN (") inch	RO rough opening
CLG ceiling	INSUL insulation	RS(C) rough sawn (cedar)
CLO closet	INT interior	SEC section
CLR clear	JNT joint	SF square foot
CMU conc masonry unit	KIT kitchen	SHT sheet
CO clean out/clear opng	L long/length	SIM similar
COL column	LAV lavatory	SQ square
CONC concrete	LB pound	STD standard
COND condition/condenser	LF linear foot	STL steel
CONTR contract(or)	LLH long leg horizontal	STO storage
CTR counter/center	LLV long leg vertical	STR structural/structure
CU cubic	MAS masonry	SY square yard
D deep/depth	MAX material	SYM symmetrical
DF drinking fountain	MC mechanical contractor	T&G tongue and groove
DIA diameter	MECH mechanical	THK thick(ness)
DIM dimension	MFR manufacture(r)	TYP typical
DN down	MIN minimum	VERT vertical
DO ditto	MISC miscellaneous	VEST vestibule
DR door	MO masonry opening	W wide/width
DS downspout	MTD mounted	W/ with
DTL detail	MTL metal	WC water closet/wall covering
DWG drawing	NA not applicable	WD wood
EB expansion bolt	NC not in contract	WDW window
EC electrical contractor	NO number	W/O without
EJ expansion joint	NOM nominal	WT weight
EL elevation	NTS not to scale	WWF welded wire fabric
ELEC electric(al)	OA overall	YD yard

SHEET INDEX

26-CVR-101	COVER SHEET AND INDEX
26-AC-101	GROUND FLOOR CODE PLAN
26-AC-102	FIRST FLOOR CODE PLAN
26-S-101	PARTITION SUPPORT FRAMING PLAN, SECTIONS
26-S-201	STRUCTURAL GENERAL NOTES AND SECTIONS
26-P-101	GROUND FLOOR PHASING PLAN
26-P-102	FIRST FLOOR PHASING PLAN
26-AD-101	GROUND FLOOR DEMOLITION PLAN
26-AD-102	FIRST FLOOR DEMOLITION PLAN
26-A-101	GROUND FLOOR PLAN
26-A-102	FIRST FLOOR PLAN
26-A-103	GROUND FLOOR RCP
26-A-104	FIRST FLOOR RCP
26-A-201	ENLARGED PLANS
26-A-202	INTERIOR ELEVATIONS
26-A-203	MILLWORK DETAILS
26-A-301	DOOR SCHEDULE, WINDOW TYPES, PARTITION TYPES
26-A-501	FINISH SCHEDULES, FINISH LEGEND
26-A-502	GROUND FLOOR FINISH PLAN, DETAILS
26-A-503	FIRST FLOOR FINISH PLAN
26-A-504	DEDUCT ALTERNATES PLAN
26-A-601	GROUND FLOOR SIGNAGE PLAN
26-A-602	FIRST FLOOR SIGNAGE PLAN
26-A-701	EQUIPMENT PLAN
26-FA-101	GROUND FLOOR FIRE ALARM PLAN
26-FA-102	FIRST FLOOR FIRE ALARM PLAN
26-FP-101	GROUND FLOOR FIRE PROTECTION PLAN
26-FP-102	FIRST FLOOR FIRE PROTECTION PLAN

26-H-001	MECHANICAL COVER SHEET
26-H-101	HVAC DEMOLITION PLANS - GROUND LEVEL
26-H-102	HVAC DEMOLITION PLANS - FIRST FLOOR
26-H-201	HVAC IMPROVEMENT PLAN - GROUND LEVEL
26-H-202	HVC IMPROVEMENT PLANS - FIRST FLOOR
26-H-301	HVAC DETAILS AND SCHEDULES
26-P-101	GROUND FLOOR PLUMBING PLAN
26-P-102	FIRST FLOOR PLUMBING PLAN
26-P-201	PLUMBING IMPROVEMENTS PLANS - FIRST FLOOR
26-P-301	PLUMBING DETAILS AND SCHEDULES
26-E-001	ELECTRICAL COVERSHEET
26-E-101	GROUND FLOOR ELECTRICAL DEMOLITION PLAN
26-E-102	FIRST FLOOR ELECTRICAL DEMOLITION PLAN
26-E-201	GROUND FLOOR ELECTRICAL POWER / SYSTEMS IMPROVEMENT PLAN
26-E-202	FIRST FLOOR ELECTRICAL POWER / SYSTEMS IMPROVEMENT PLAN
26-E-301	GROUND FLOOR ELECTRICAL LIGHTING IMPROVEMENT PLAN
26-E-302	FIRST FLOOR ELECTRICAL LIGHTING IMPROVEMENT PLAN
26-E-401	ELECTRICAL DETAILS AND SCHEDULES
26-E-402	ELECTRICAL SCHEDULES

STANDARD DETAIL SYMBOLS



AREA MAP
NOT TO SCALE

Revisions		Date		WDM ARCHITECTS WDM Architects P.A. 105 North Washington Wichita, KS 67202-2815 T 316.262.4700 F 316.262.0002 wdmarchitects.com		FSC, Inc. CONSULTING ENGINEERS		MKEC Wichita, KS • 316.684.9800		WDM PROJECT NO. 15093 The drawing and all information herein is the exclusive property of WDM Architects P.A. and is not to be copied or used in any way without the express written consent of WDM Architects P.A. All drawings, specification, ideas, designs and arrangements appearing herein constitute the original and unpublished Work of the Architect Copyright 2016		Medical Center Director Name: Michael Moore Signature: [Signature]		Assistant Medical Center Director Name: Vicki G. Bondie Signature: [Signature]		Associate Medical Center Director Name: [Blank] Signature: [Blank]		Project Title RENOVATE BACKFILL OF BUILDING 26		Project Number 589A7-16-102		Office of Construction and Facilities Management Department of Veterans Affairs	
										Director, Facilities Management Name: ERIC WEAVER Signature: [Signature]		Chief of Staff Name: A. Kovato Signature: [Signature]		Nurse Executive Name: TERRY SCOTT, RN, MSN Signature: [Signature]		Location 5500 EAST KELLOGG WICHITA, KANSAS		Building Number 26					
										Safety Manager Name: William J. Howard Signature: [Signature]						Drawing Number 26-CVR-101		Dwg. 1 of 7					