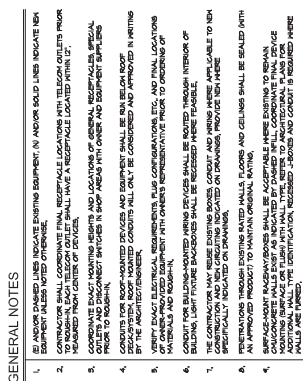
[illegible]

1. CONNECT TO CIRCUIT AS INDICATED VIA LIGHTING CONTROL PANEL. LG-1, REFER TO LIGHTING CONTROL SCHEDULE, PROVIDE EXTRA HOT OR UNMIXED CONDUCTOR TO KEEP BATTERY PACKS ENERGIZED.
2. CEILING MOUNTED LINE VOLTAGE OCCUPANCY SENSOR, HATSTOPPER DT-500U OR EQUAL UPON ENGINEER'S APPROVAL, REFER TO DETAIL DT-E-04.
3. MOUNT PHOTO ELECTRIC EYE ON ROOF FACING DUE NORTH IN NEMA 3R ENCLOSURE.



--	--	--	--	--	--	--	--	--	--	--	--	--	--	--	--	--	--	--	--	--	--	--	--	--	--	--	--	--	--	--	--	--	--	--	--	--	--	--	--	--	--	--	--	--	--	--	--	--	--	--	--	--	--	--	--	--	--	--	--	--	--	--	--	--	--	--	--	--	--	--	--	--	--	--	--	--	--	--	--	--	--	--	--	--	--	--	--	--	--	--	--	--	--	--	--	--	--	--	--	--	--	--	--	--	--	--	--	--	--	--	--	--	--	--	--	--	--	--	--	--	--	--	--	--	--	--	--	--	--	--	--	--	--	--	--	--	--	--	--	--	--	--	--	--	--	--	--	--	--	--	--	--	--	--	--	--	--	--	--	--	--	--	--	--	--	--	--	--	--	--	--	--	--	--	--	--	--	--	--	--	--	--	--	--	--	--	--	--	--	--	--	--	--	--	--	--	--	--	--	--	--	--	--	--	--	--	--	--	--	--	--	--	--	--	--	--	--	--	--	--	--	--	--	--	--	--	--	--	--	--	--	--	--	--	--	--	--	--	--	--	--	--	--	--	--	--	--	--	--	--	--	--	--	--	--	--	--	--	--	--	--	--	--	--	--	--	--	--	--	--	--	--	--	--	--	--	--	--	--	--	--	--	--	--	--	--	--	--	--	--	--	--	--	--	--	--	--	--	--	--	--	--	--	--	--	--	--	--	--	--	--	--	--	--	--	--	--	--	--	--	--	--	--	--	--	--	--	--	--	--	--	--	--	--	--	--	--	--	--	--	--	--	--	--	--	--	--	--	--	--	--	--	--	--	--	--	--	--	--	--	--	--	--	--	--	--	--	--	--	--	--	--	--	--	--	--	--	--	--	--	--	--	--	--	--	--	--	--	--	--	--	--	--	--	--	--	--	--	--	--	--	--	--	--	--	--	--	--	--	--	--	--	--	--	--	--	--	--	--	--	--	--	--	--	--	--	--	--	--	--	--	--	--	--	--	--	--	--	--	--	--	--	--	--	--	--	--	--	--	--	--	--	--	--	--	--	--	--	--	--	--	--	--	--	--	--	--	--	--	--	--	--	--	--	--	--	--	--	--	--	--	--	--	--	--	--	--	--	--	--	--	--	--	--	--	--	--	--	--	--	--	--	--	--	--	--	--	--	--	--	--	--	--	--	--	--	--	--	--	--	--	--	--	--	--	--	--	--	--	--	--	--	--	--	--	--	--	--	--	--	--	--	--	--	--	--	--	--	--	--	--	--	--	--	--	--	--	--	--	--	--	--	--	--	--	--	--	--	--	--	--	--	--	--	--	--	--	--	--	--	--	--	--	--	--	--	--	--	--	--	--	--	--	--	--	--	--	--	--	--	--	--	--	--	--	--	--	--	--	--	--	--	--	--	--	--	--	--	--	--	--	--	--	--	--	--	--	--	--	--	--	--	--	--	--	--	--	--	--	--	--	--	--	--	--	--	--	--	--	--	--	--	--	--	--	--	--	--	--	--	--	--	--	--	--	--	--	--	--	--	--	--	--	--	--	--	--	--	--	--	--	--	--	--	--	--	--	--	--	--	--	--	--	--	--	--	--	--	--	--	--	--	--	--	--	--	--	--	--	--	--	--	--	--	--	--	--	--	--	--	--	--	--	--	--	--	--	--	--	--	--	--	--	--	--	--	--	--	--	--	--	--	--	--	--	--	--	--	--	--	--	--	--	--	--	--	--	--	--	--	--	--	--	--	--	--	--	--	--	--	--	--	--	--	--	--	--	--	--	--	--	--	--	--	--	--	--	--	--	--	--	--	--	--	--	--	--	--	--	--	--	--	--	--	--	--	--	--	--	--	--	--	--	--	--	--	--	--	--	--	--	--	--	--	--	--	--	--	--	--	--	--	--	--	--	--	--	--	--	--	--	--	--	--	--	--	--	--	--	--	--	--	--	--	--	--	--	--	--	--	--	--	--	--	--	--	--	--	--	--	--	--	--	--	--	--	--	--	--	--	--	--	--	--	--	--	--	--	--	--	--	--	--	--	--	--	--	--	--	--	--	--	--	--	--	--	--	--	--	--	--	--	--	--	--	--	--	--	--	--	--	--	--	--	--	--	--	--	--	--	--	--	--	--	--	--	--	--	--	--	--	--	--	--	--	--	--	--	--	--	--	--	--	--	--	--	--	--	--	--	--	--	--	--	--	--	--	--	--	--	--	--	--	--	--	--	--	--	--	--	--	--	--	--	--	--	--	--	--	--	--	--	--	--	--	--	--	--	--	--	--	--	--	--	--	--	--	--	--	--	--	--	--	--	--	--	--	--	--	--	--	--	--	--	--	--	--	--	--	--	--	--	--	--	--	--	--	--	--	--	--	--	--	--	--	--	--	--	--	--	--	--	--	--	--	--	--	--	--	--	--	--	--	--	--	--	--	--	--	--	--	--	--	--	--	--	--	--	--	--	--	--	--	--	--	--	--	--	--	--	--	--	--	--	--	--	--	--	--	--	--	--	--	--	--	--	--	--	--	--	--	--	--	--	--	--	--	--	--	--	--	--	--	--	--	--	--	--	--	--	--	--	--	--	--	--	--	--	--	--	--	--	--	--	--	--	--	--	--	--	--	--	--	--	--	--	--	--	--	--	--	--	--	--	--	--	--	--	--	--	--



SHEET NOTES

- [illegible]

- [illegible]



POWER PLAN - FIRST LEVEL



7-E-3.1
SCALE: 3/8" = 1'-0"
C
ENLARGED BREAK ROOM
NEW WORK PLAN



7-E-3.1
B
ENLARGED ELECTRICAL
ROOM NEW WORK PLAN
SCALE: 3/8" = 1'-0"

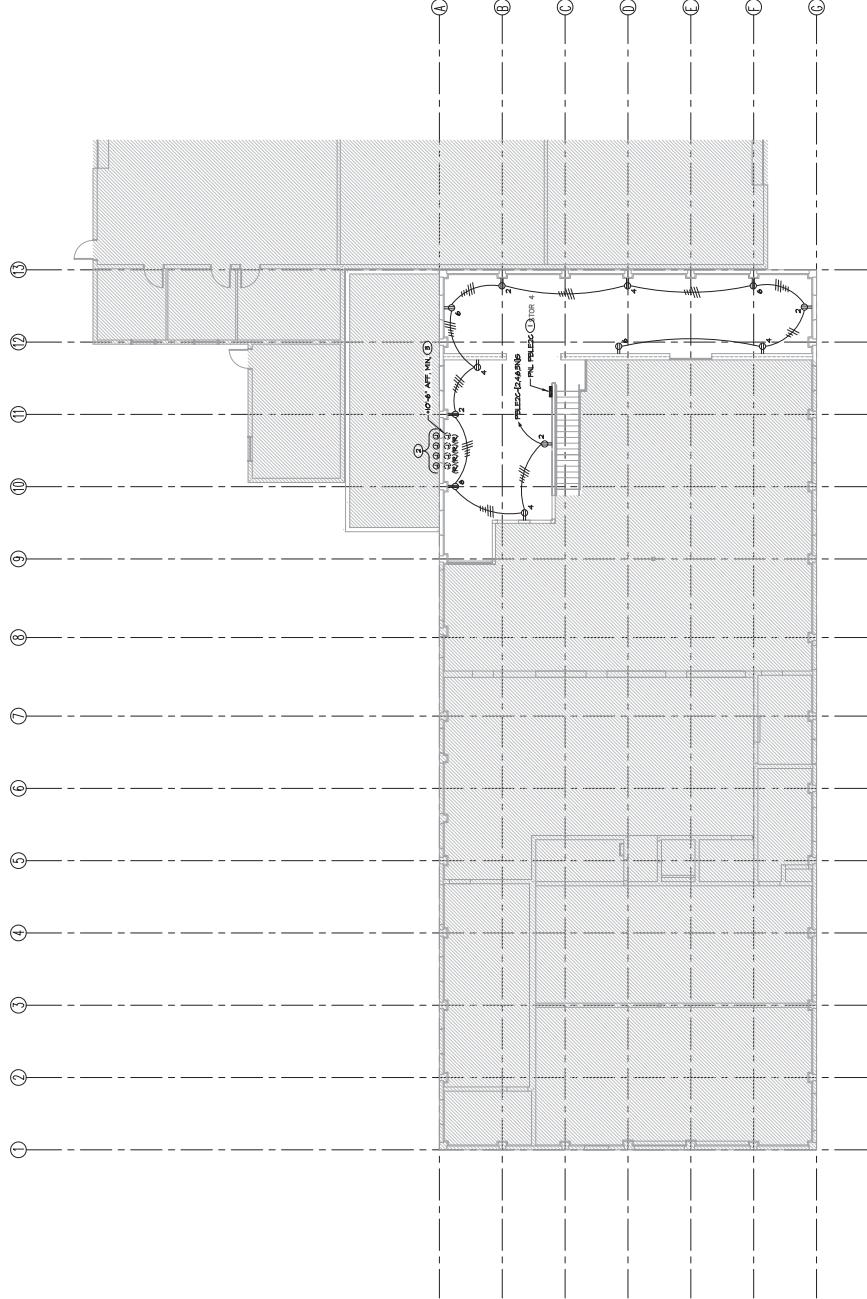
[illegible]

GENERAL NOTES

1. BE ANCHOR CHAINS INDICATE EXISTING EQUIPMENT. IN ANCHOR CHAINS INDICATE NEW EQUIPMENT. BE ANCHOR CHAINS INDICATE EXISTING EQUIPMENT. IN ANCHOR CHAINS INDICATE NEW EQUIPMENT. BE ANCHOR CHAINS INDICATE EXISTING EQUIPMENT. IN ANCHOR CHAINS INDICATE NEW EQUIPMENT.
2. COORDINATE EXISTING EQUIPMENT AND LOCATIONS OF EXISTING EQUIPMENT. SPECIAL OUTLETS AND DISCONNECT SWITCHES IN SHOP AREAS WITH OTHERS AND EQUIPMENT SHIELDS.
3. ALL EXISTING CABLES, CONDUIT AND BONES WITHIN INDICATED AREA OF WORK NOT APPROVED IN ACCORDANCE WITH NEC AND NFPA SHALL BE RE-APPROVED AS REQUIRED. PROVIDE NEW INSTALLATIONS OR CONDITIONS TO MEET THE REQUIREMENTS OF THE NATIONAL ELECTRICAL CODE (NEC) AND NFPA. THE CONTRACTOR MAY REUSE EXISTING BONES, CONDUIT AND WIRING WHERE APPLICABLE TO NEW CONSTRUCTION AND NEW INSTALLATIONS INDICATED ON DRAWINGS. PROVIDE NEW WIRING.
4. ALL WIRING SHALL BE INSTALLED IN ACCORDANCE WITH THE NATIONAL ELECTRICAL CODE (NEC) AND NFPA. ALL WIRING SHALL BE INSTALLED IN ACCORDANCE WITH THE NATIONAL ELECTRICAL CODE (NEC) AND NFPA.
5. PENETRATIONS THROUGH EXISTING RATED WALLS, FLOORS AND CEILING SHALL BE SEALED WITH AN APPROVED PRODUCT TO MAINTAIN ORIGINAL RATING.
6. CONTRACTOR IS RESPONSIBLE FOR RECONSTRUCTING EXISTING LIGHT FIXTURES DISCONNECTED DURING CONSTRUCTION. EXISTING SYSTEMS SHALL BE IN ACCORDANCE WITH THE NATIONAL ELECTRICAL CODE (NEC) AND NFPA.

SHEET NOTES

1. SEE GENERAL NOTES FOR CONDUIT AND WIRE SIZES.
2. FINISH AND INSTALL ADDITIONAL CONDUIT, WIRE AND 2-WAY SWITCH FOR RELATION OF EXISTING CONDUIT TO ABOVE THE MEZZANINE FLOOR. CONTRACTOR SHALL VERIFY FINAL CONDUIT AND WIRE SIZES AND LOCATIONS WITH THE ARCHITECT PRIOR TO CONSTRUCTION.
3. COORDINATE FINAL WIRING HEIGHT AND CONE DRILL REQUIREMENTS WITH STRUCTURAL AND ARCHITECTURAL PRIOR TO CONSTRUCTION.



A POWER PLAN - MEZZANINE
7-E-3.2 SCALE: 1/8" = 1'-0"



CONSULTANTS:		ARCHITECT/ENGINEERS:		DRAWING TITLE		PROJECT NO.		OFFICE OF CONSTRUCTION AND FACILITIES MANAGEMENT	
 PK Electrical, Inc. Engineering Design - Consulting 1000 West 10th Street, Suite 100, Omaha, NE 68104 Phone: (402) 441-1111 Fax: (402) 441-1112 www.pk-electrical.com		 SIKORA ARCHITECTS/ENGINEERS 4000 N. 10th Street, Suite 100, Omaha, NE 68104 Phone: (402) 441-1111 Fax: (402) 441-1112 www.sikora.com		POWER PLAN - MEZZANINE		BUILDING 7 REMODEL		654-16-621	
				APPROVED PROJECT DIRECTOR		DESIGNED BY		PROJECT MANAGER	
				JEG		JEG		7	
				DATE		DATE		DATE	
				1-27-17		1-27-17		7-E-3.2	
				SHEET NO.		SHEET NO.		SHEET NO.	
				14 OF 19		14 OF 19		14 OF 19	



GENERAL NOTES

1. RELOCATED EXISTING UNDERGROUND SERVICES IN AN AREA SHOWN IN THE LOCATED AREAS. RELOCATED SERVICES SHALL BE IDENTIFIED BY THE CONTRACTOR AND THE LOCATION OF THE SERVICES SHALL BE NOTED IN THE RELOCATED EXISTING SERVICES SHEET.
2. SPACES AT OR ABOVE ELECTRICAL PANELS SHALL NOT BE USED FOR THE RELOCATED EXISTING SERVICES SHEET. THE CONTRACTOR SHALL PROVIDE A RELOCATED EXISTING SERVICES SHEET FOR EACH ELECTRICAL PANEL. THE CONTRACTOR SHALL PROVIDE A RELOCATED EXISTING SERVICES SHEET FOR EACH ELECTRICAL PANEL. THE CONTRACTOR SHALL PROVIDE A RELOCATED EXISTING SERVICES SHEET FOR EACH ELECTRICAL PANEL.
3. THE CONTRACTOR SHALL PROVIDE A RELOCATED EXISTING SERVICES SHEET FOR EACH ELECTRICAL PANEL. THE CONTRACTOR SHALL PROVIDE A RELOCATED EXISTING SERVICES SHEET FOR EACH ELECTRICAL PANEL. THE CONTRACTOR SHALL PROVIDE A RELOCATED EXISTING SERVICES SHEET FOR EACH ELECTRICAL PANEL.
4. LOCATE ALL DISCREPANCIES BETWEEN THE RELOCATED EXISTING SERVICES SHEET AND THE RELOCATED EXISTING SERVICES SHEET. THE CONTRACTOR SHALL PROVIDE A RELOCATED EXISTING SERVICES SHEET FOR EACH ELECTRICAL PANEL.
5. SPECIFY ELECTRICAL, MECHANICAL, AND PLUMBING DRAWINGS FOR TECHNICAL, UNIT, MODEL, NUMBER, AND SPECIFICATIONS. THE CONTRACTOR SHALL PROVIDE A RELOCATED EXISTING SERVICES SHEET FOR EACH ELECTRICAL PANEL.
6. INFORMATION ON RELOCATED EXISTING SERVICES SHALL BE PROVIDED TO THE CONTRACTOR BY THE CONTRACTOR. THE CONTRACTOR SHALL PROVIDE A RELOCATED EXISTING SERVICES SHEET FOR EACH ELECTRICAL PANEL.
7. THE CONTRACTOR SHALL PROVIDE A RELOCATED EXISTING SERVICES SHEET FOR EACH ELECTRICAL PANEL. THE CONTRACTOR SHALL PROVIDE A RELOCATED EXISTING SERVICES SHEET FOR EACH ELECTRICAL PANEL. THE CONTRACTOR SHALL PROVIDE A RELOCATED EXISTING SERVICES SHEET FOR EACH ELECTRICAL PANEL.



DETAIL NOTES

- | | |
|---|-------------------|
| ① | LOCATE CONTROL RE |
|---|-------------------|



FIRE ALARM
SCALE: NONE
B
E-4.1

FIRE A

B

7-E-4.1

SCALE: NONE

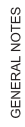
ARCHITECT/ENGINEERS:



**EQUIPMENT POWER & SIGNAL
PLAN - FIRST LEVEL**

Approved: Project Director

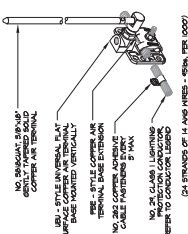
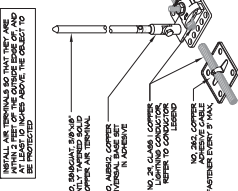
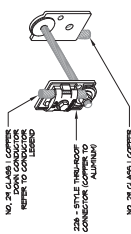
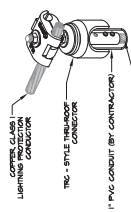
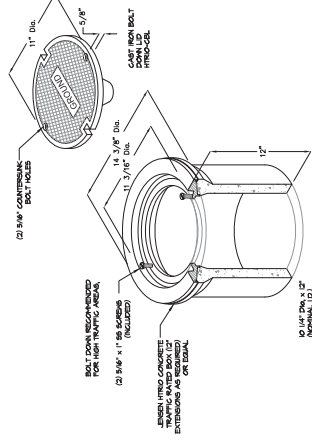
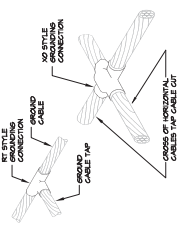
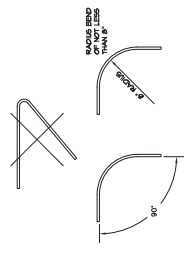
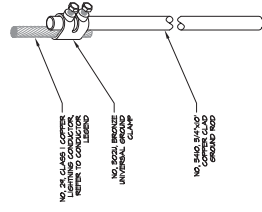
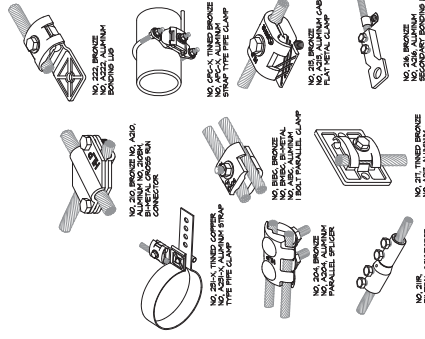
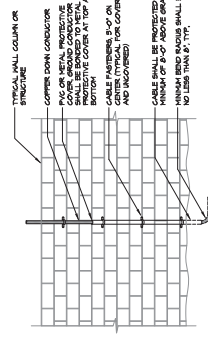
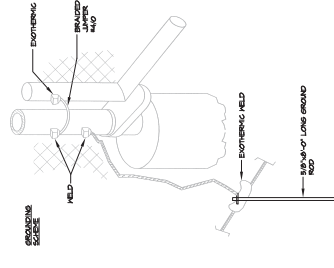
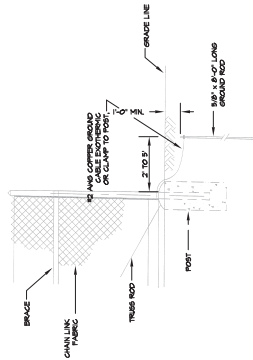
Project Number 654-16-621	Office of Construction and Facilities Management:
Bidding Number 7	 UNIVERSITY OF MARYLAND SYSTEM
Drawing Number 7-E-4.1	
	Dwg. 15 of 19



1. RELOCATED EQUIPMENT: (N) AND/OR SOLID LINES INDICATE NEW EQUIPMENT. (LESS NOTED OTHERWISE).
2. NEW TYPE ALARM DEVICES SHALL BE RECEIVED AND ASSOCIATED CONDUIT AND CABLEING SHALL BE CONFINED BETWEEN DRYWALL ABOVE CEILING AND, WHERE PRACTICABLE, SURFACE-MOUNT CONDUIT OR RACEWAY AND DEVICES SHALL BE KEPT TO A MINIMUM. COORDINATE ANY ITEMS REQUIRED TO BE SURFACE MOUNT WITH ENGINEER AND ARCHITECT PRIOR TO BEGINNING.

- ① COORDINATE LOCATION AND MOUNTING HEIGHT WITH LIGHTING, ELECTRICAL, CONDUITS AND MECHANICAL DUCTWORK PRIOR TO ROUGH-IN.
- ② PROVIDE ELECTRICAL CONNECTIONS TO RELOCATED AIR COMPRESSOR, COORDINATE WITH PLUMBING CONTRACTOR PRIOR TO ROUGH-IN.

[illegible]





1. IF ANYONE DISCOVERS AN ACTIVE EXISTING BURIED, OR AN EXPOSED LINE (UNDERGROUND OR ABOVE GROUND) WHILE CONDUCTING ANY OF THE WORKS, THE CONTRACTOR SHALL STOP WORK IMMEDIATELY AND NOTIFY THE ENGINEER AND THE UTILITY COMPANY IMMEDIATELY BY PHONE AND IN WRITING. THE CONTRACTOR SHALL NOT ATTEMPT TO REMOVE OR RELOCATE THE LINE.
2. BEFORE ANY WORK BEGINS, THE CONTRACTOR SHALL OBTAIN ALL NECESSARY PERMITS AND APPROVALS FROM THE UTILITY COMPANIES AND THE CITY OF ALBUQUERQUE. THE CONTRACTOR SHALL BE RESPONSIBLE FOR OBTAINING ALL NECESSARY PERMITS AND APPROVALS FROM THE UTILITY COMPANIES AND THE CITY OF ALBUQUERQUE.
3. THE CONTRACTOR SHALL BE RESPONSIBLE FOR OBTAINING ALL NECESSARY PERMITS AND APPROVALS FROM THE UTILITY COMPANIES AND THE CITY OF ALBUQUERQUE. THE CONTRACTOR SHALL BE RESPONSIBLE FOR OBTAINING ALL NECESSARY PERMITS AND APPROVALS FROM THE UTILITY COMPANIES AND THE CITY OF ALBUQUERQUE.
4. THE CONTRACTOR SHALL BE RESPONSIBLE FOR OBTAINING ALL NECESSARY PERMITS AND APPROVALS FROM THE UTILITY COMPANIES AND THE CITY OF ALBUQUERQUE. THE CONTRACTOR SHALL BE RESPONSIBLE FOR OBTAINING ALL NECESSARY PERMITS AND APPROVALS FROM THE UTILITY COMPANIES AND THE CITY OF ALBUQUERQUE.
5. THE CONTRACTOR SHALL BE RESPONSIBLE FOR OBTAINING ALL NECESSARY PERMITS AND APPROVALS FROM THE UTILITY COMPANIES AND THE CITY OF ALBUQUERQUE. THE CONTRACTOR SHALL BE RESPONSIBLE FOR OBTAINING ALL NECESSARY PERMITS AND APPROVALS FROM THE UTILITY COMPANIES AND THE CITY OF ALBUQUERQUE.
6. THE CONTRACTOR SHALL BE RESPONSIBLE FOR OBTAINING ALL NECESSARY PERMITS AND APPROVALS FROM THE UTILITY COMPANIES AND THE CITY OF ALBUQUERQUE. THE CONTRACTOR SHALL BE RESPONSIBLE FOR OBTAINING ALL NECESSARY PERMITS AND APPROVALS FROM THE UTILITY COMPANIES AND THE CITY OF ALBUQUERQUE.
7. THE CONTRACTOR SHALL BE RESPONSIBLE FOR OBTAINING ALL NECESSARY PERMITS AND APPROVALS FROM THE UTILITY COMPANIES AND THE CITY OF ALBUQUERQUE. THE CONTRACTOR SHALL BE RESPONSIBLE FOR OBTAINING ALL NECESSARY PERMITS AND APPROVALS FROM THE UTILITY COMPANIES AND THE CITY OF ALBUQUERQUE.
8. THE CONTRACTOR SHALL BE RESPONSIBLE FOR OBTAINING ALL NECESSARY PERMITS AND APPROVALS FROM THE UTILITY COMPANIES AND THE CITY OF ALBUQUERQUE. THE CONTRACTOR SHALL BE RESPONSIBLE FOR OBTAINING ALL NECESSARY PERMITS AND APPROVALS FROM THE UTILITY COMPANIES AND THE CITY OF ALBUQUERQUE.
9. THE CONTRACTOR SHALL BE RESPONSIBLE FOR OBTAINING ALL NECESSARY PERMITS AND APPROVALS FROM THE UTILITY COMPANIES AND THE CITY OF ALBUQUERQUE. THE CONTRACTOR SHALL BE RESPONSIBLE FOR OBTAINING ALL NECESSARY PERMITS AND APPROVALS FROM THE UTILITY COMPANIES AND THE CITY OF ALBUQUERQUE.
10. THE CONTRACTOR SHALL BE RESPONSIBLE FOR OBTAINING ALL NECESSARY PERMITS AND APPROVALS FROM THE UTILITY COMPANIES AND THE CITY OF ALBUQUERQUE. THE CONTRACTOR SHALL BE RESPONSIBLE FOR OBTAINING ALL NECESSARY PERMITS AND APPROVALS FROM THE UTILITY COMPANIES AND THE CITY OF ALBUQUERQUE.

[illegible]BID DOCUMENTS