

HOOD INFORMATION														
HOOD NO.	MARK	MODEL	HOOD DIMENSIONS (IN.)			HOOD CONSTR.	HOOD TEMP RATING	TOTAL CFM	EXHAUST COLLAR(S)					SECTION LOCATION
			LENGTH	WIDTH	HEIGHT				WIDTH	LENGTH	DIA.	CFM	S.P.	
1	HOOD #1_BISTRO	XXDW-124-S	124	54	24	300 SS 100%	600 DEG F	2325	10	22		2325	0.542	SINGLE

HOOD INFORMATION														
HOOD NO.	MARK	LIGHTING DETAILS				GREASE FILTRATION DETAILS				UTILITY CABINET(S)				
		FIXTURE TYPE BULB / LAMP INFO		QTY	FOOT CANDLES	TYPE / MODEL MATERIAL		QTY	SIZE (IN.) L H	LOCATION	FIRE SYSTEM		CONTROLS	
1	HOOD #1_BISTRO	LED TUBE 48 IN LONG (2 LAMPS)		2	78.01	X-TRACTOR STAINLESS STEEL		4	16 20		TYPE		MODEL	INTERFACE
								3	20					

HOOD OPTIONS

UL 710 LISTED W/ OUT EXHAUST FIRE DAMPER - UL #R25625

BACK INTEGRAL AIR SPACE - 3 IN WIDE

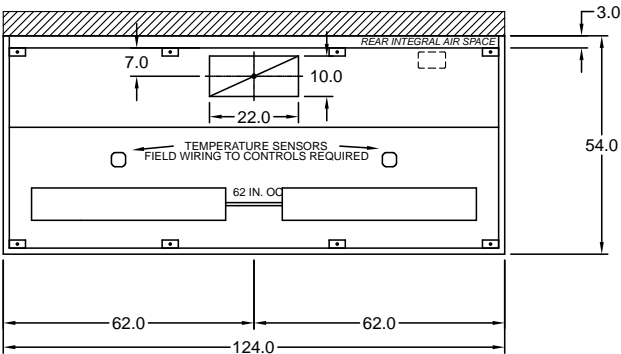
FACTORY MOUNTED EXHAUST COLLAR(S)

EXHAUST AIR BALANCING BAFFLE(S) - (EABB)

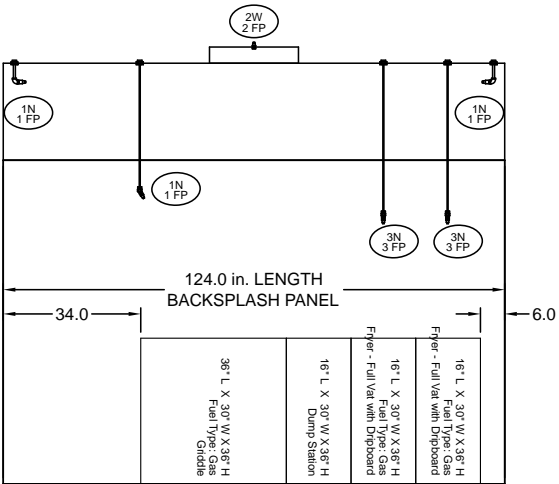
BACKSPLASH 80.00 IN HIGH 124.00 IN LONG

PERFORMANCE ENHANCING LIP (PEL) TECHNOLOGY

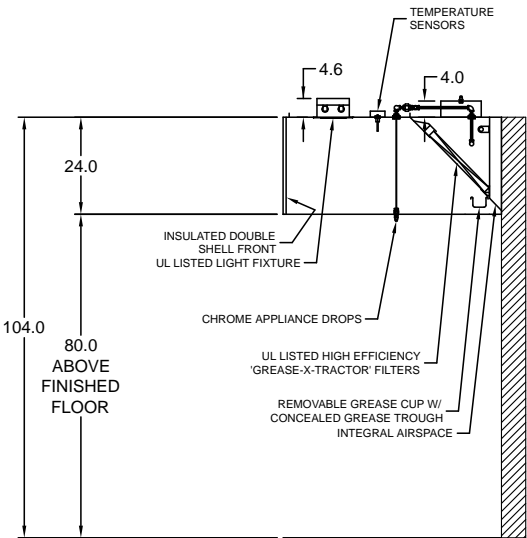
STANDING SEAM CONSTRUCTION FOR SUPERIOR STRENGTH



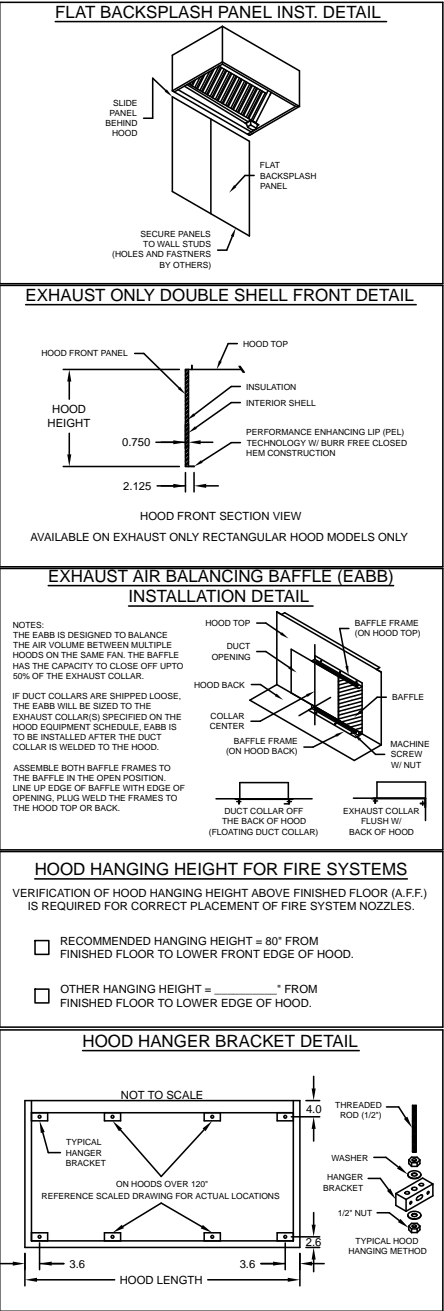
SECTION 1  
PLAN VIEW



SECTION 1  
ELEVATION VIEW



MARK: HOOD #1\_BISTRO  
SECTION VIEW



REFERENCE ONLY

Q-1

HOOD INFORMATION																	
HOOD NO.	MARK	MODEL	HOOD DIMENSIONS (IN.)			HOOD CONSTR.	HOOD TEMP RATING	EXHAUST						SUPPLY		TOTAL WEIGHT LBS.	SECTION LOCATION
			LENGTH	WIDTH	HEIGHT			TOTAL CFM	COLLAR(S)				MUA CFM	AC CFM			
									WIDTH	LENGTH	DIA.	CFM			S.P.		
1	HOOD #2_PIZZA	XXDW-77-S	77	54	24	300 SS 100%	600 DEG F	1765	9	17		1765	0.736			282.333	SINGLE

HOOD INFORMATION													
HOOD NO.	MARK	LIGHTING DETAILS			GREASE FILTRATION DETAILS			UTILITY CABINET(S)					
		FIXTURE TYPE BULB / LAMP INFO	QTY	FOOT CANDLES	TYPE / MODEL MATERIAL	QTY	SIZE (IN.)		LOCATION	FIRE SYSTEM		CONTROLS	
							L	H		TYPE	SIZE	MODEL	INTERFACE
1	HOOD #2_PIZZA	LED TUBE 48 IN LONG (2 LAMPS)	1	58.5	X-TRACTOR STAINLESS STEEL	1	16	20					
						3	20						

HOOD OPTIONS

UL 710 LISTED W/ OUT EXHAUST FIRE DAMPER - UL #R25625

BACK INTEGRAL AIR SPACE - 3 IN WIDE

LEFT NON-INTEGRAL AIR SPACE - 1 IN THICK - ZERO CLEARANCE

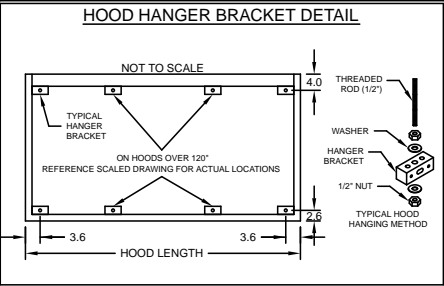
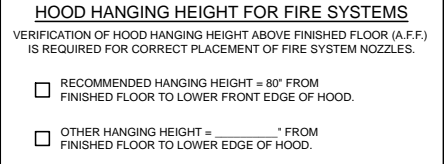
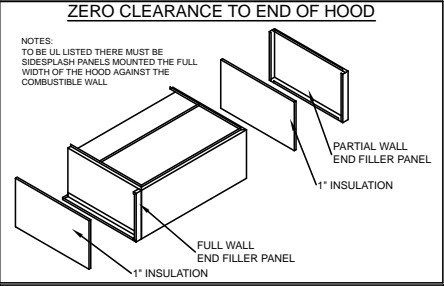
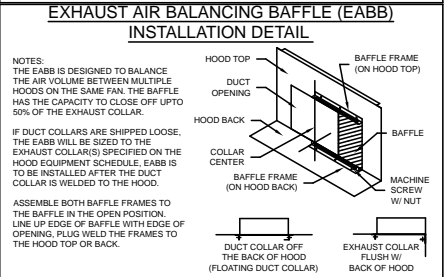
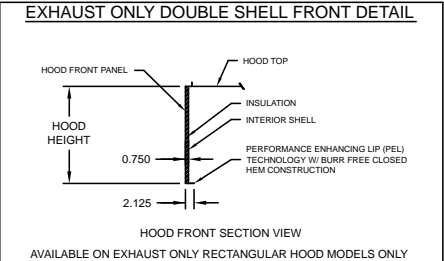
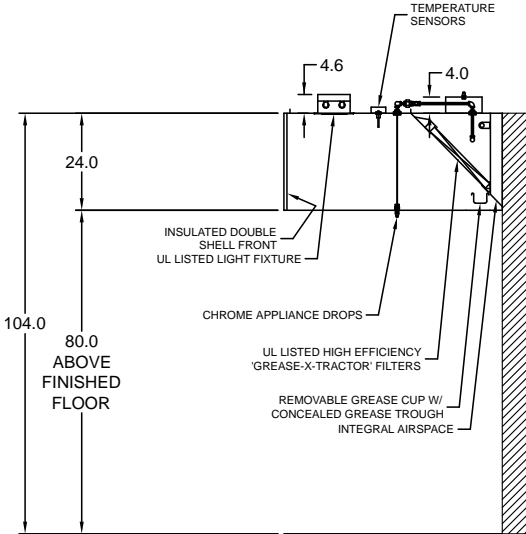
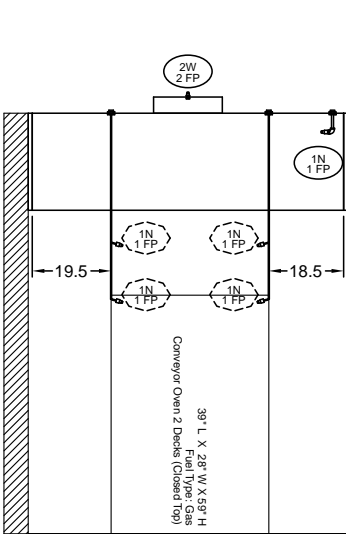
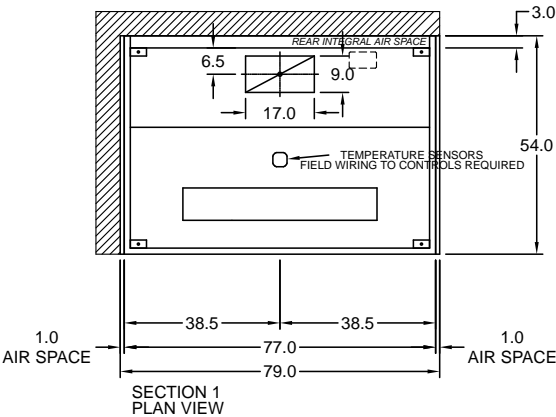
RIGHT NON-INTEGRAL AIR SPACE - 1 IN THICK - ZERO CLEARANCE

FACTORY MOUNTED EXHAUST COLLAR(S)

EXHAUST AIR BALANCING BAFFLE(S) - (EABB)

PERFORMANCE ENHANCING LIP (PEL) TECHNOLOGY

STANDING SEAM CONSTRUCTION FOR SUPERIOR STRENGTH



HOOD INFORMATION																	
HOOD NO.	MARK	MODEL	HOOD DIMENSIONS (IN.)			HOOD CONSTR.	HOOD TEMP RATING	EXHAUST						SUPPLY		TOTAL WEIGHT LBS.	SECTION LOCATION
			LENGTH	WIDTH	HEIGHT			TOTAL CFM	COLLAR(S)				MUA CFM	AC CFM			
									WIDTH	LENGTH	DIA.	CFM	S.P.				
1	HOOD #3 & #4_BACK OF HOUSE	XXDW-92-S	92	60	30	300 SS 100%	600 DEG F	2111	10	20		2111	0.672			352.667	LEFT
2	HOOD #3 & #4_BACK OF HOUSE	XXDW-92-S	92	60	30	300 SS 100%	600 DEG F	1917	10	18		1917	0.608			352.667	RIGHT

HOOD INFORMATION													
HOOD NO.	MARK	LIGHTING DETAILS			GREASE FILTRATION DETAILS			UTILITY CABINET(S)					
		FIXTURE TYPE BULB / LAMP INFO	QTY	FOOT CANDLES	TYPE / MODEL MATERIAL	QTY	SIZE (IN.) L H	LOCATION	FIRE SYSTEM TYPE	SIZE	MODEL	CONTROLS INTERFACE	
1	HOOD #3 & #4_BACK OF HOUSE	LED TUBE 48 IN LONG (2 LAMPS)	1	53.76	X-TRACTOR STAINLESS STEEL	2	16 20						
						3	20						
2	HOOD #3 & #4_BACK OF HOUSE	LED TUBE 48 IN LONG (2 LAMPS)	1	53.76	X-TRACTOR STAINLESS STEEL	2	16 20						
						3	20						

HOOD OPTIONS

UL 710 LISTED W/ OUT EXHAUST FIRE DAMPER - UL #R25625

BACK INTEGRAL AIR SPACE - 3 IN WIDE

LEFT NON-INTEGRAL AIR SPACE - 1 IN THICK - ZERO CLEARANCE

CONTINUOUS CAPTURE

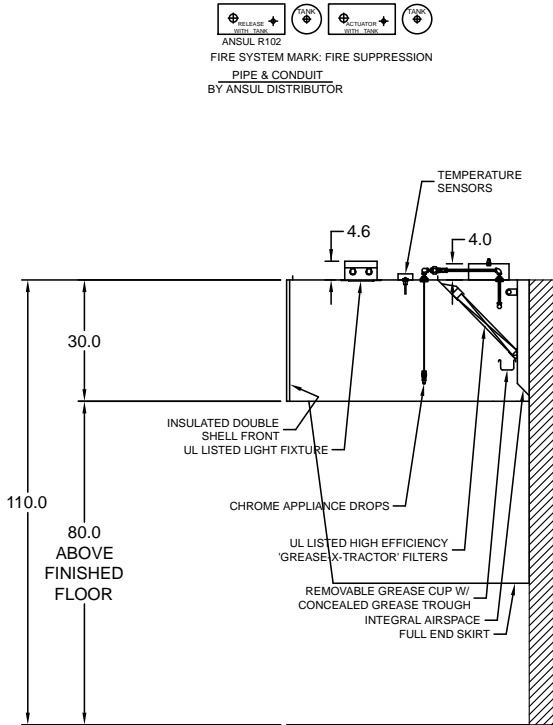
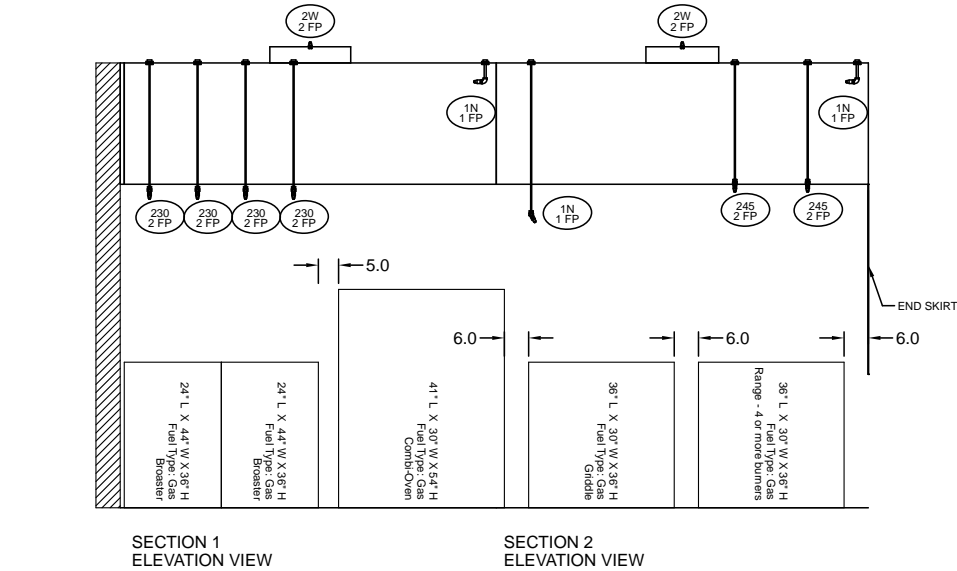
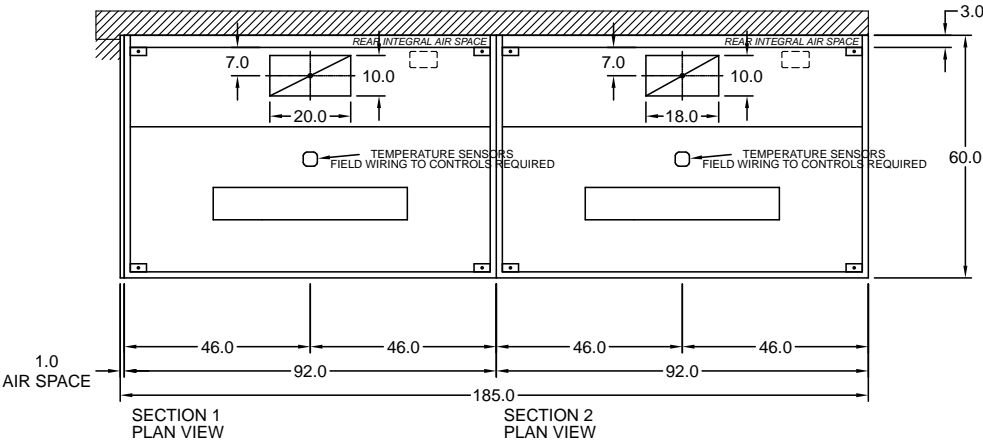
FACTORY MOUNTED EXHAUST COLLAR(S)

EXHAUST AIR BALANCING BAFFLE(S) - (EABB)

RIGHT FULL END SKIRT - 45 IN HIGH 54.50 IN TOP WIDTH 48.5 IN BOTTOM WIDTH

PERFORMANCE ENHANCING LIP (PEL) TECHNOLOGY

STANDING SEAM CONSTRUCTION FOR SUPERIOR STRENGTH

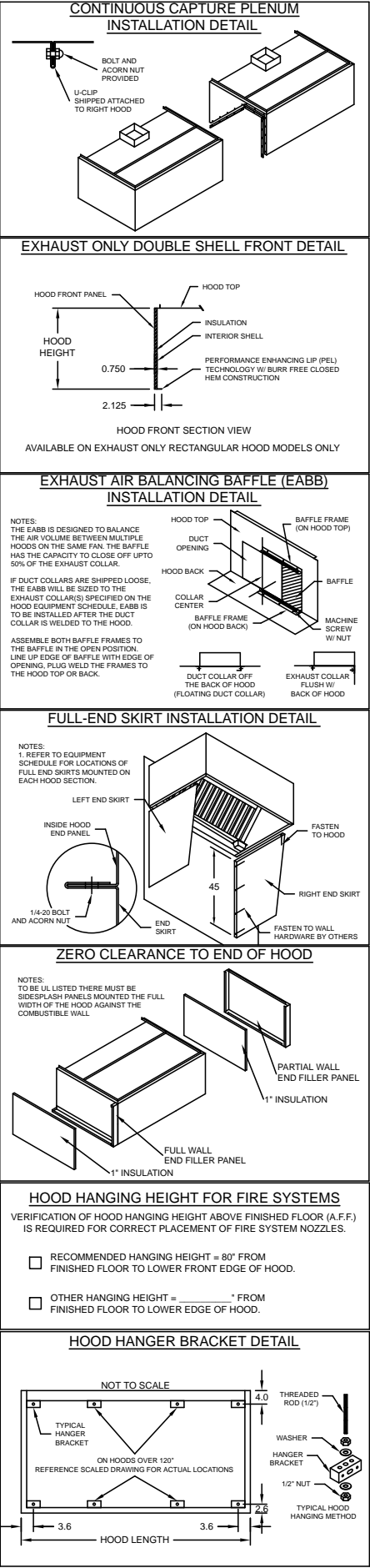


MARK: HOOD #3 & #4\_BACK OF HOUSE (LAST HOOD IN ROW)

SECTION VIEW

REFERENCE ONLY

Q-3



FIRE SYSTEM INFORMATION

MARK	MODEL	LOCATION	FLOW POINTS		SUPPLY LINE	DETECTION	MARK(S) PROTECTED BY FIRE SYSTEM	
			HOODS	PCU				
FIRE SUPPRESSION	ANSUL R-102 WET CHEMICAL	REMOTE MOUNTED	37 UTILIZED 44 AVAILABLE		CONTINUOUS	FUSIBLE LINK		HOOD #3 & #4_BACK OF HOUSE SECTION 1
								HOOD #3 & #4_BACK OF HOUSE SECTION 2
								HOOD #1_BISTRO SECTION 1
								HOOD #2_PIZZA SECTION 1

FIRE SYSTEM OPTIONS AND ACCESSORIES

FULL INSTALLATION (INCLUDES PRE-PIPED HOOD(S) WITH DETECTION AND FACTORY COORDINATED INSTALL)  
CHROME SLEEVES FOR FACTORY PROVIDED APPLIANCES DROPS - INCLUDED  
METAL BLOW-OFF CAPS - INCLUDED  
GAS VALVE - INCLUDED - MECHANICAL SHUTOFF VALVE, 3", (ANSUL) - PART# 25938  
HOOD SUPPRESSION AGENT - INCLUDED - 12 GAL. - [(4) 3.0 TANK(S)]  
REMOTE PULL STATION - STANDARD - INSTALLATION AT SINGLE POINT OF EGRESS

ANSUL R102 (WET CHEMICAL) FIRE PROTECTION SYSTEM - MODEL FSSC

**CONTROL PANEL**

**NOT TO SCALE**

**NOTES:**

WET CHEMICAL FIRE PROTECTION SYSTEM TO BE ANSUL R-102, DESIGNED IN COMPLIANCE WITH UL 300 REQUIREMENTS.

- VERIFICATION OF ALL COOKING EQUIPMENT MAKE, MODEL AND LOCATION REQUIRED FOR ALL FIRE PROTECTION SYSTEMS.
- ALL FIRE SYSTEM PIPING IS STANDARDLY TO THE RIGHT END OF THE HOOD UNLESS A WALL IS LOCATED ON THE RIGHT END.
- ANSUL AUTOMAN RELEASE TO BE LOCATED WITHIN 60" OF HOOD.

THE BASIC FIRE SYSTEM WILL INCLUDE THE FOLLOWING:

- GAS SHUT-OFF VALVE, IF REQUIRED, TO BE SUPPLIED BY MANUFACTURER (UP TO 2" DIAMETER AS STANDARD), AND INSTALLED BY A LICENSED PLUMBER.
- MICRO SWITCH TO BE SUPPLIED BY MANUFACTURER FOR CONNECTION TO, BUT NOT LIMITED TO, BUILDING ALARM SYSTEM(S), EXHAUST AND SUPPLY FANS AND ELECTRICAL POWER SHUT DOWN. FIELD WIRING AND CONNECTIONS TO BE PERFORMED BY A LICENSED ELECTRICIAN.

THE BASIC FIRE SYSTEM DOES NOT INCLUDE THE FOLLOWING:

- FULL DUMP TEST OTHER THAN WHT IS SPECIFIED PER THE INSTALLATION MANUAL, OR TO SATISFY A STATE OR LOCAL CODE. PERMIT AND TESTING FEES ARE NOT INCLUDED UNLESS NOTED UNDER THE EQUIPMENT SCHEDULE FOR THE FIRE SYSTEM.
- MORE THEN TWO TRIPS TO THE JOBSITE OR SPECIAL TRANSPORTATION, OR OVERNIGHT LODGING REQUIREMENTS IN REMOTE AREAS. NORMAL TRAVEL DISTANCE IS FIRST 50 MI. (80.5 KM) FROM OFFICE.
- SPECIAL CLASSES OR ADDITIONAL LABOR FOR ACCESS TO SECURITY SENSITIVE AREAS.
- INSTALLATION OF GAS SHUT-OFF VALVE.
- SPECIAL DRAWINGS REQUIRED TO SATISFY STATE OR LOCAL CODE. PLAN EXAMINATION FEES, PE OR FS APPROVAL STAMP.
- UNION LABOR, GOVERNMENT LABOR, OR PREVAILING WAGES REQUIRED FOR FINAL FIELD HOOK-UP.
- ANY AND ALL ELECTRICAL COMPONENTS/CONNECTIONS REQUIRED TO SHUT DOWN FANS, SHUT OFF DEVICE FOR ELECTRIC COOKING EQUIPMENT (SHUNT TRIP BREAKER), OR ACTIVATE AN ALARM SYSTEM, ETC.
- ANY DISMANTLING OR REASSEMBLY REQUIRED TO GAIN ACCESS TO THE FIRE SUPPRESSION PIPING LOCATED ON THE TOP OF THE HOOD.
- ROUGH-IN HIDDEN CONDUIT FOR REMOTE PULL STATION OR GAS VALVE (FLUSH MOUNTED PULL STATION).
- INSTALLATION OF MORE THAN (1) REMOTE PULL STATIONS OR DISTANCES GREATER THAN 20 FT (6.1M).
- PARTS OR LABOR REQUIRED TO CORRECT PIPING DUE TO COOKING EQUIPMENT CHANGES OR DEVIATION FROM PLANS, OR ANY CHARGES FOR MISSING OR ADDITIONAL PARTS OTHER THEN THOSE INDICATED ON THE FIRE SUPPRESSION DETAIL.

**WIRING DIAGRAMS**  
W/DPDT MICRO SWITCH

DPDT SWITCHES PROVIDED BY MANUFACTURER MAY BE WIRED PER TYPICAL EXAMPLES SHOWN. VERIFY WITH LOCAL CODES AND EQUIPMENT SUPPLIED AS THE CONNECTION NEEDED FOR YOUR INSTALLATION.

**CONNECTION TO BUILDINGS ALARM**

**CONNECTION TO COOKING EQUIPMENT SHUT DOWN**

**CONNECTION TO FAN SHUT DOWN**

DO NOT SHUT DOWN EXHAUST FANS WITH THIS METHOD OF WIRING, IF PROHIBITED BY LOCAL CODES.

**NOTES:**

- 1. \_\_\_\_\_ DENOTES FIELD INSTALLATION.
- 2. \_\_\_\_\_ DENOTES FACTORY INSTALLATION.
- 3. DO NOT USE BLACK WIRE OR SNAP-ACTION SWITCH IN NORMAL INSTALLATION. BLACK WIRE TO BE USED ONLY FOR EXTRANEOUS ALARM, LIGHT CIRCUITS, ETC.



ACCUREX - SOUTHERN CA  
JACOB FOCHS  
JACOB.FOCHS@ACCUREX.COM  
(424)201-9507

PROJECT  
3/21/2016

VA HOSPITAL LOMA LINDA, CA  
R.3

MARK

FIRE SUPPRESSION



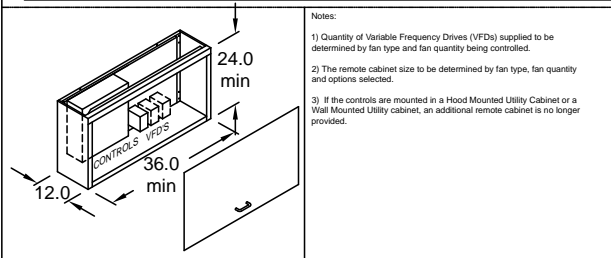
REFERENCE ONLY

Q-4

CONTROL INFORMATION

MARK	ELECTRICAL CONTROL PACKAGE		USER INTERFACE		FANS CONTROLLED				
	MODEL	LOCATION	TYPE	LOCATION	MARK	TYPE	VOLT	PHASE	HP
VARI-FLOW	VARI-FLOW	REMOTE VAV CABINET	KEYPAD	SHIP LOOSE	EF-1	EXHAUST	460	3	10

VARI-FLOW REMOTE VAV CABINET DETAIL (TYPICAL)



- Notes:
- 1) Quantity of Variable Frequency Drives (VFDs) supplied to be determined by fan type and fan quantity being controlled.
  - 2) The remote cabinet size to be determined by fan type, fan quantity and options selected.
  - 3) If the controls are mounted in a Hood Mounted Utility Cabinet or a Wall Mounted Utility cabinet, an additional remote cabinet is no longer provided.

ACCUREX Vari-Flow (Variable Volume)  
Electrical Prewire Package  
VA HOSPITAL\_LOMA LINDA, CA r.3

000-8X-310  
2-2.2

