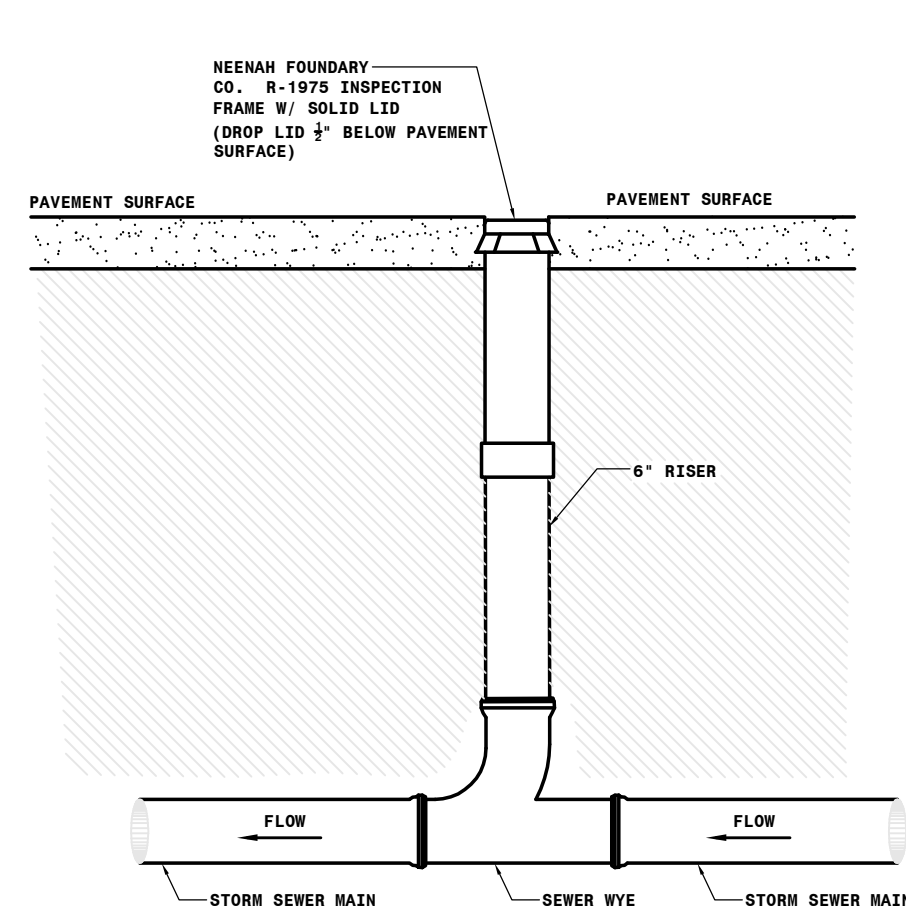
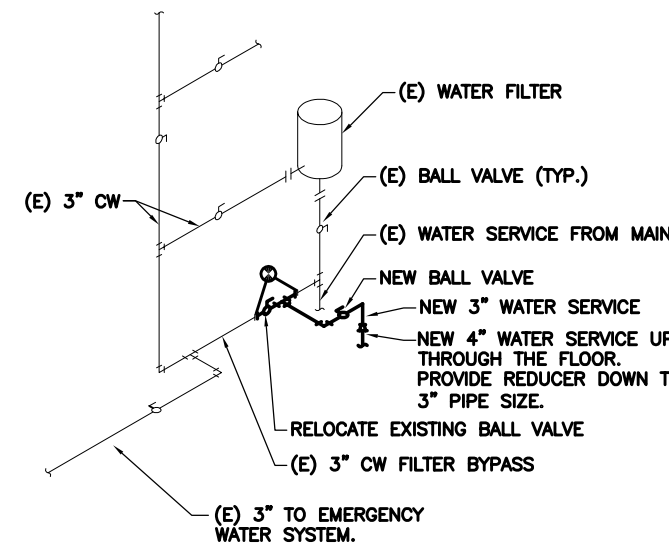


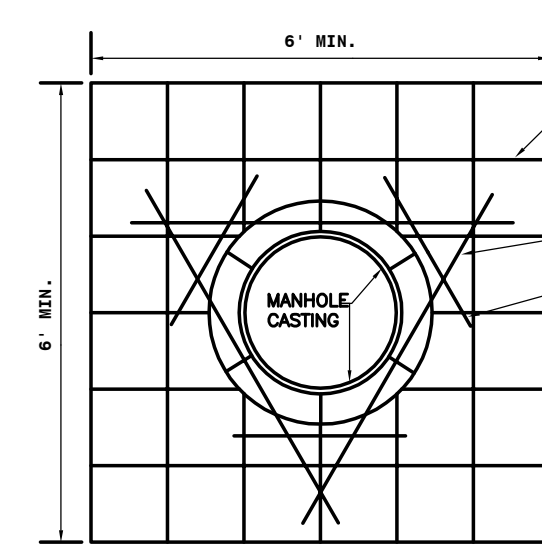
1 SANITARY SEWER CLEANOUT STANDARD DETAIL
10.2 NOT-TO-SCALE



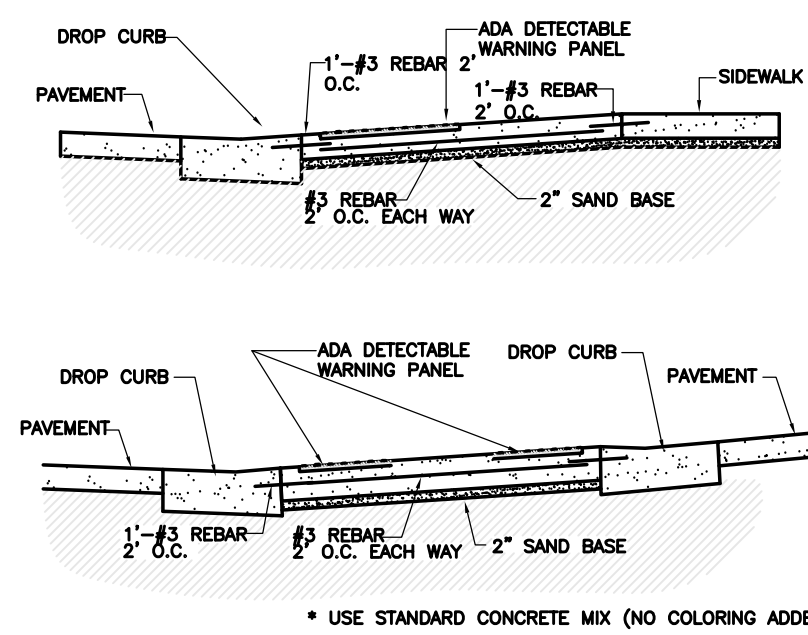
2 STORM SEWER CLEANOUT STANDARD DETAIL
10.2 NOT-TO-SCALE



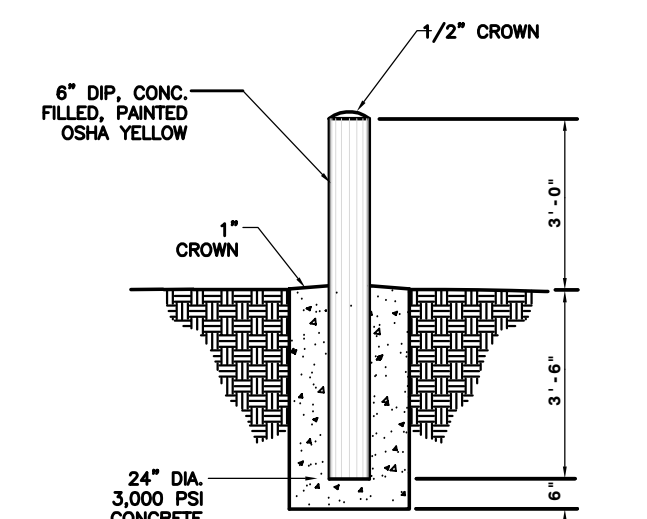
3 SECONDARY WATER SERVICE TO BOILER PLANT DETAIL
10.2 NOT-TO-SCALE



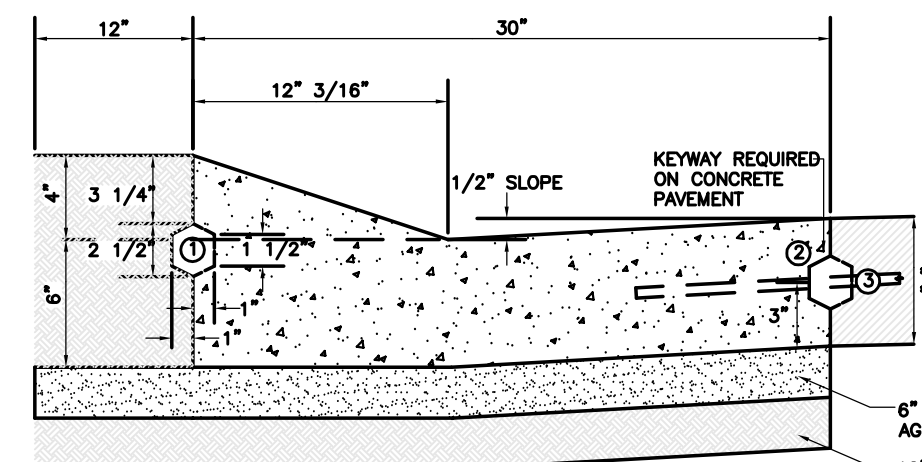
4 TYPICAL MANHOLE ISOLATION DETAIL
10.2 NOT-TO-SCALE



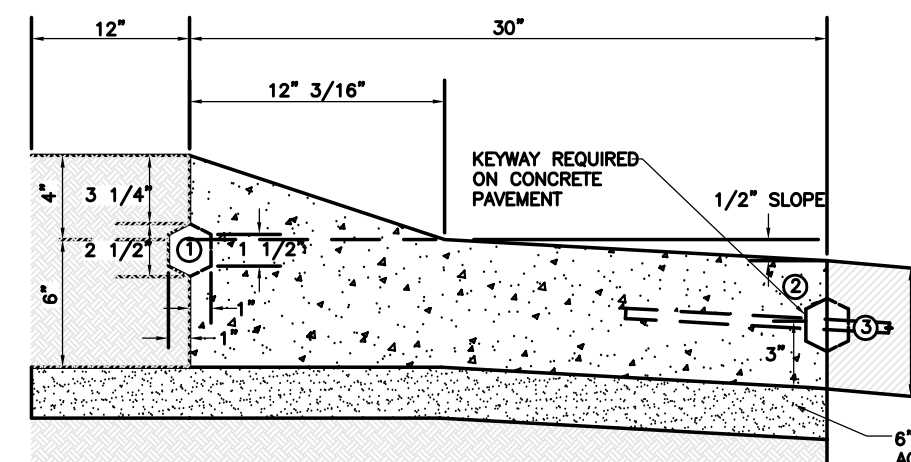
5 ADA RAMP & ISLAND DETAIL
10.2 NOT-TO-SCALE



6 CONCRETE PIPE BOLLARD DETAIL
10.2 NOT-TO-SCALE



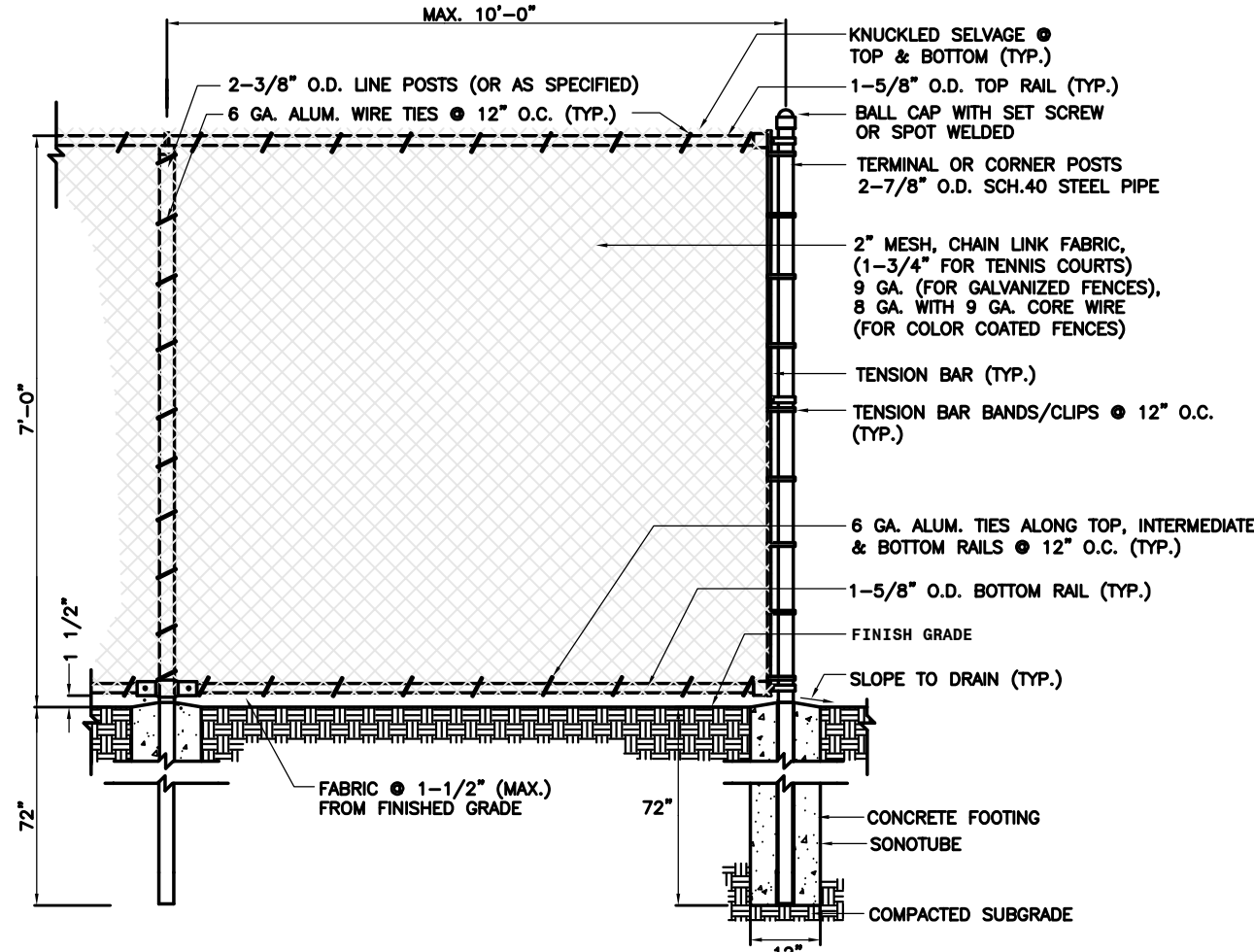
TYPE I MOUNTABLE CURB & GUTTER



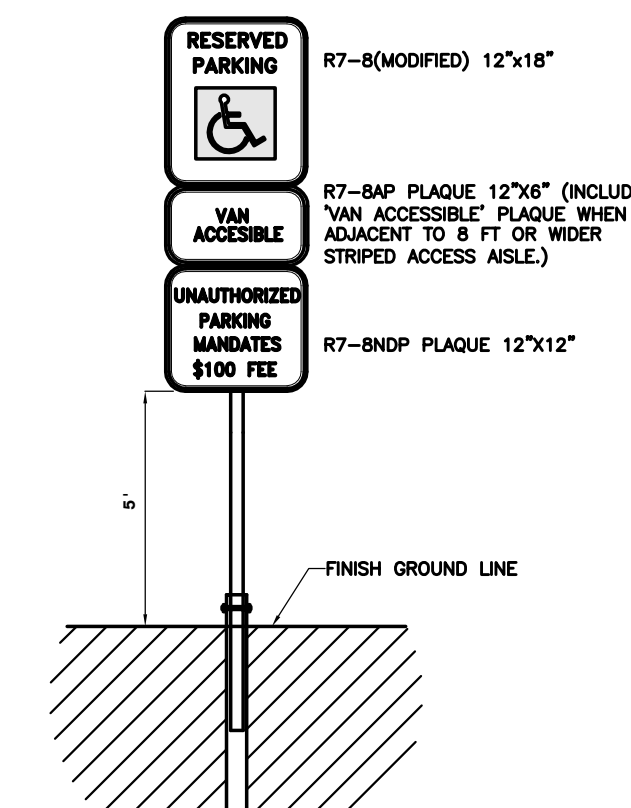
TYPE II MOUNTABLE CURB & GUTTER

- NOTE: 1. MALE KEYWAY REQUIRED FOR EXTRUDED CURB CONSTRUCTION AT 3/4" O.C. & KEYWAY REQUIRED WHEN SEPARATE CURB IS INSTALLED WITH CONCRETE PAVING.
- NOTE: 2. FEMALE KEYWAY FOR USE WITH FORMS (INDICATED WITH DASHED LINES).
- NOTE: 3. PLACE DUMMAY JOINT AT 10" O.C. FOR ASPHALT PAVING.
- NOTE: 4. PLACE DUMMAY JOINT TO MATCH PANEL SPACING FOR CONCRETE PAVING.

9 (TYPE I OR TYPE II) MOUNTABLE CONCRETE CURB AND GUTTER DETAIL
10.2 NOT-TO-SCALE

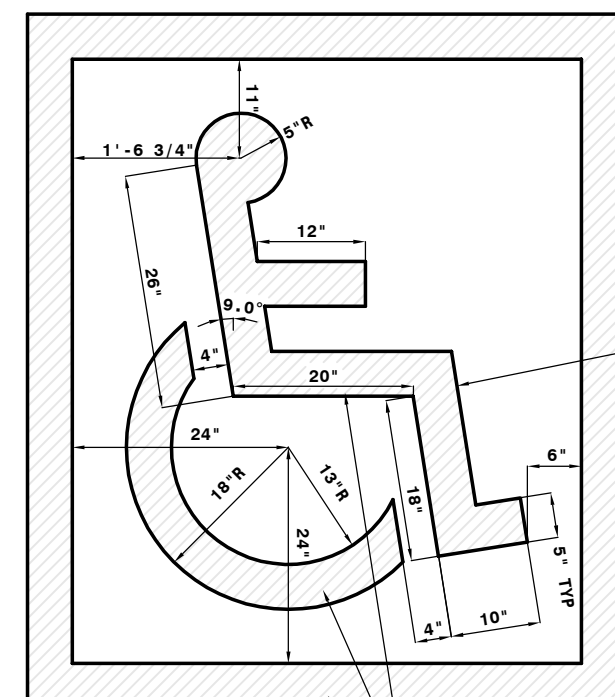


10 7' HIGH CHAIN LINK FENCE
10.2 NOT-TO-SCALE

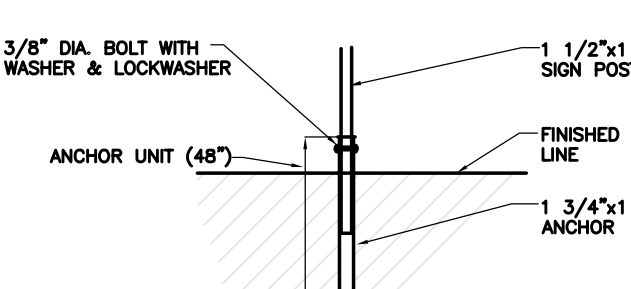


- NOTES: 1. SHEETING SHALL BE ENGINEER GRADE.
- NOTES: 2. SIGN PLATE SHALL BE 80 GAUGE ALUMINUM.
- NOTES: 3. SIGNS SHALL BE IN ACCORDANCE WITH THE MANUAL ON UNIFORM TRAFFIC CONTROL DEVICES.

15 ACCESSIBILITY SIGN DETAIL
10.2 NOT-TO-SCALE

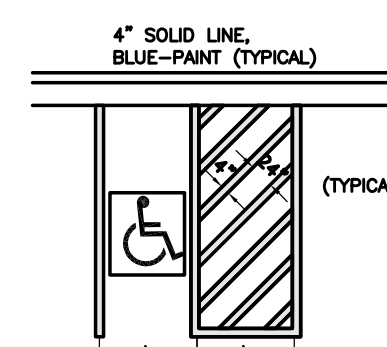


16 ACCESSIBILITY SYMBOL DETAIL
10.2 NOT-TO-SCALE

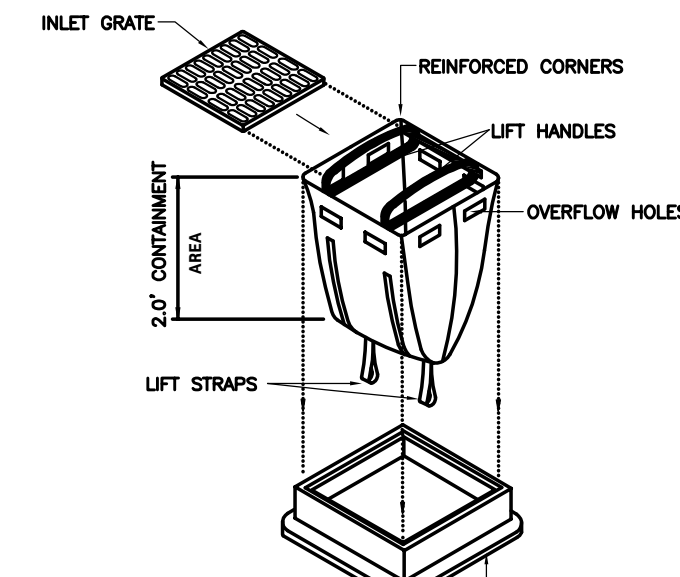


- NOTES: 1. ALL POSTS AND ANCHORS SHALL BE 12 GAUGE STEEL.
- NOTES: 2. STRIPING ADJACENT TO ACCESSIBLE PARKING SHALL BE BLUE.
- NOTES: 3. DIMENSION ACCESSIBLE SYMBOLS AS PER INTERNATIONAL SYMBOL OF ACCESSIBILITY DETAIL.

17 SINGLE BREAKAWAY DETAIL
10.2 NOT-TO-SCALE



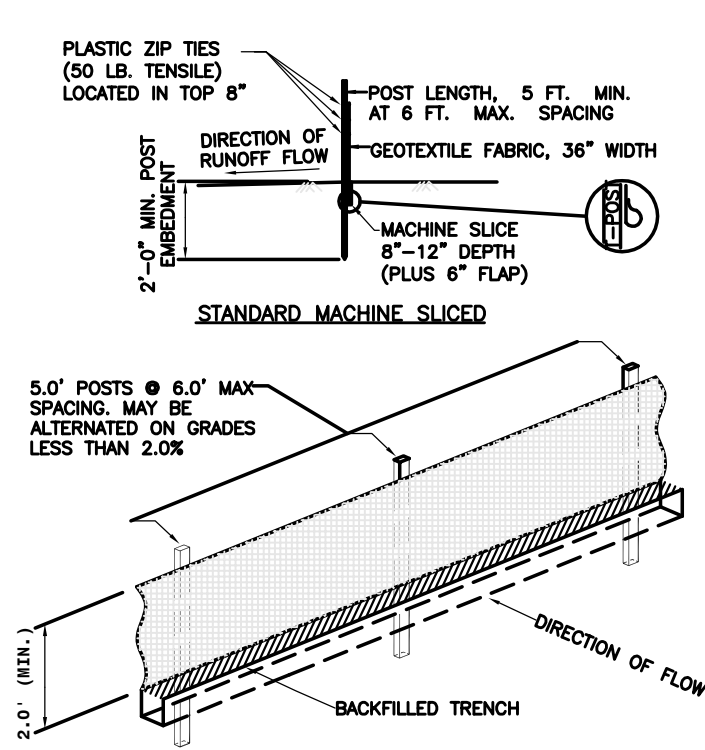
18 ACCESSIBLE STRIPING DETAIL
10.2 NOT-TO-SCALE



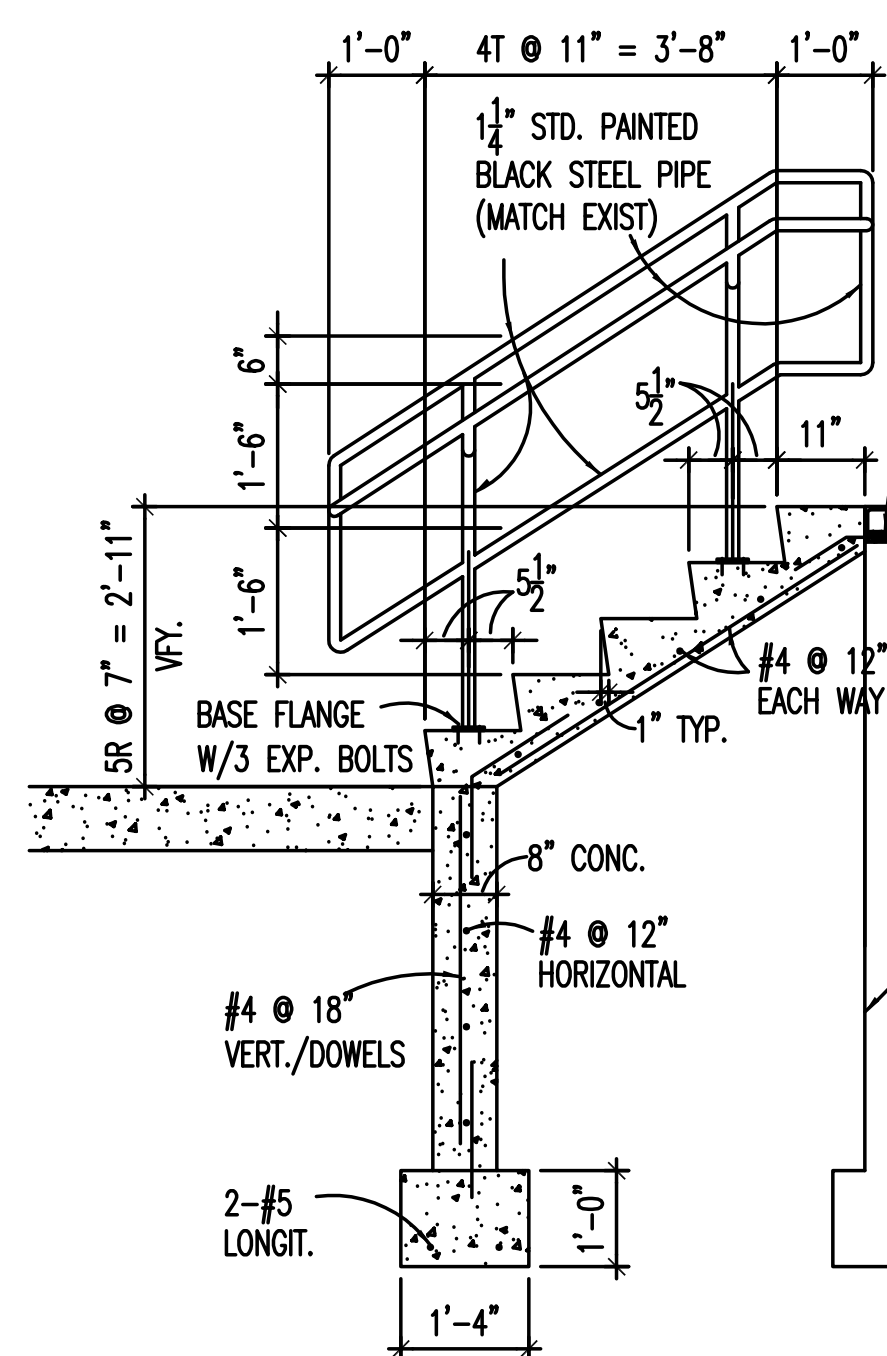
- INSTALLATION: 1. REMOVE THE INLET GRATE.
- INSTALLATION: 2. STAND THE GRATE UPRIGHT. INSTALL THE GRATE BETWEEN THE LIFT STRAPS.
- INSTALLATION: 3. PLACE THE BAG IN THE INLET & LOWER THE BAG AND GRATE USING THE LIFT STRAPS.

- MAINTENANCE: 1. CHECK BAG REGULARLY & AFTER RAIN EVENTS. IF THE BAG IS FILLED WITH 1/3 OF ITS CAPACITY WITH SEDIMENT, EMPTY THE BAG.
- MAINTENANCE: 2. REMOVE DEBRIS AROUND THE INLET GRATE PRIOR TO REMOVING BAG.
- MAINTENANCE: 3. USE THE LIFT HANDLES TO REMOVE THE BAG AND USE THE LIFT STRAPS ON THE BOTTOM TO EMPTY BAG.

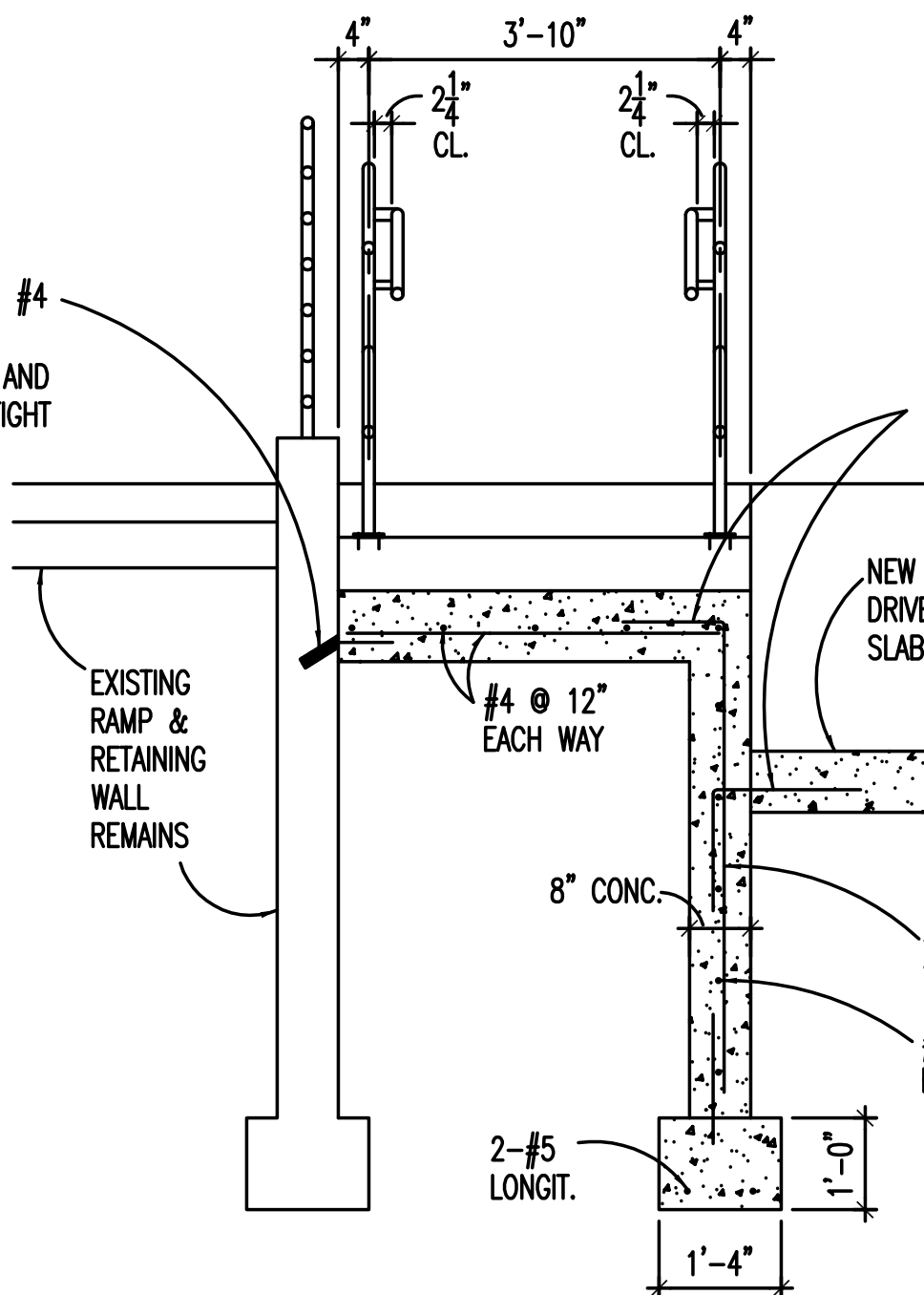
19 INLET PROTECTION DETAIL
10.2 NOT-TO-SCALE



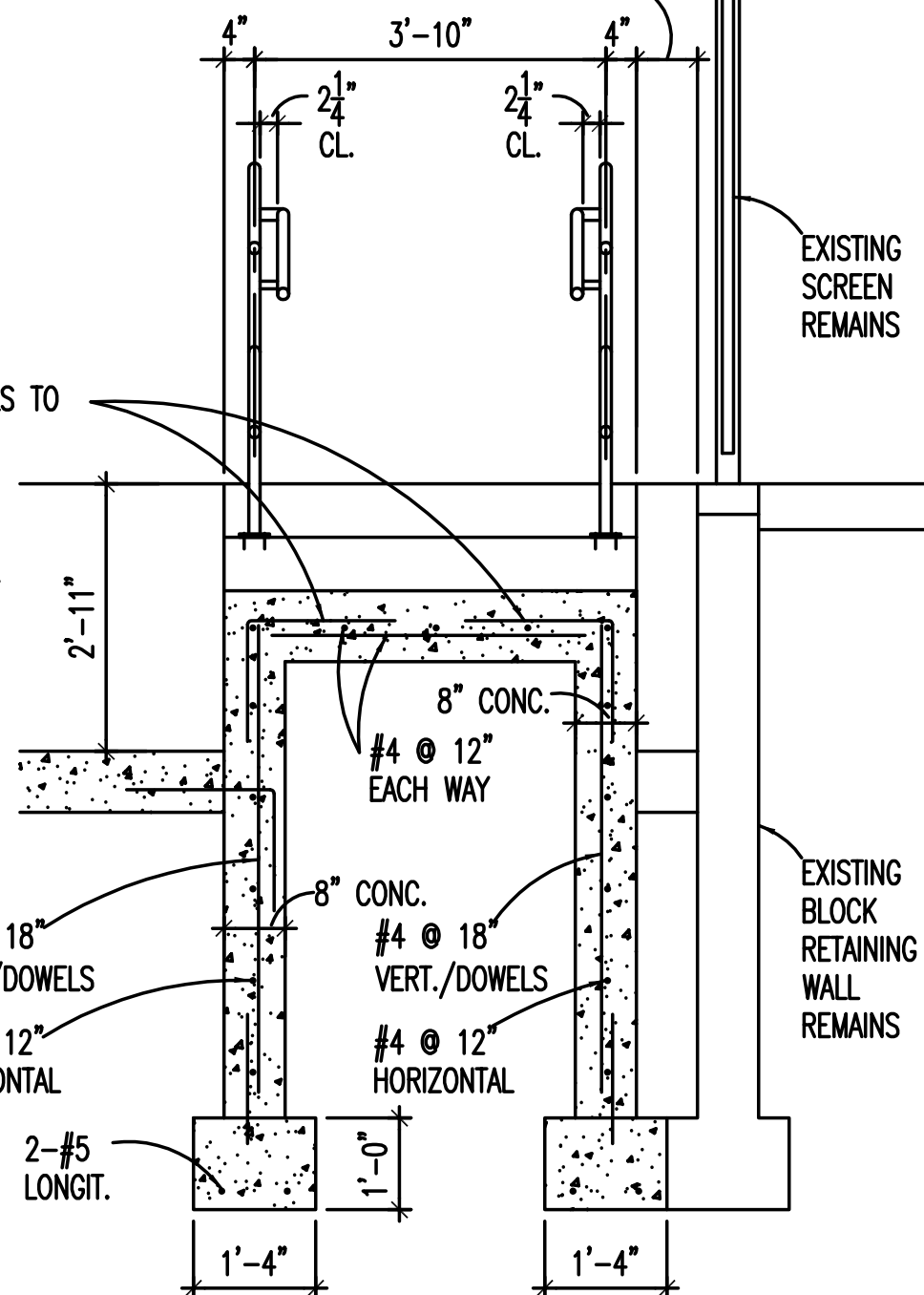
20 SILT FENCE DETAIL
10.2 NOT-TO-SCALE



STAIR SECTION
1/2"-1'-0"



SECTION - EAST STAIR
1/2"-1'-0"



SECTION - WEST STAIR
1/2"-1'-0"

21 NORTH LOADING DOCK STEP DETAIL
10.2 NOT-TO-SCALE

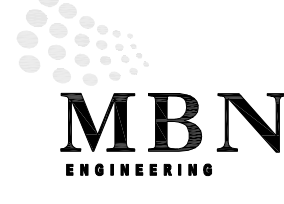


Dept. of Veterans Affairs
Medical Center
2101 Elm Street North
Fargo, ND 58102



IMAGE GROUP INC.
403 CENTER AVENUE, SUITE 300
MOORHEAD, MN 56560

IMAGE GROUP INC., Architecture & Interiors
MBN ENGINEERING, Civil Engineers



MBN ENGINEERING
MECHANICAL * ELECTRICAL * CIVIL
303 7th St. N. Suite 200
FARGO, ND 58102
PHONE: 755-4743338
FAX: 755-4743340



Drawing Title DETAILS		Project Title VA MEDICAL CENTER REPLACE UTILITY MAINS AND ASPHALT		Date MAY 17, 2012
VA Project No. 437-11-156	Contract No. VA263-P-1217 VA263-C-	Designed By TE	Checked By JM	Scale AS NOTED
Building No. SITE	AutoCAD File Name 11-110 C10.1-10.2.DWG	Drawn By TE	Location VA MEDICAL CENTER FARGO, ND	Drawing No. C10.2
				Dwg. 45 of 45

