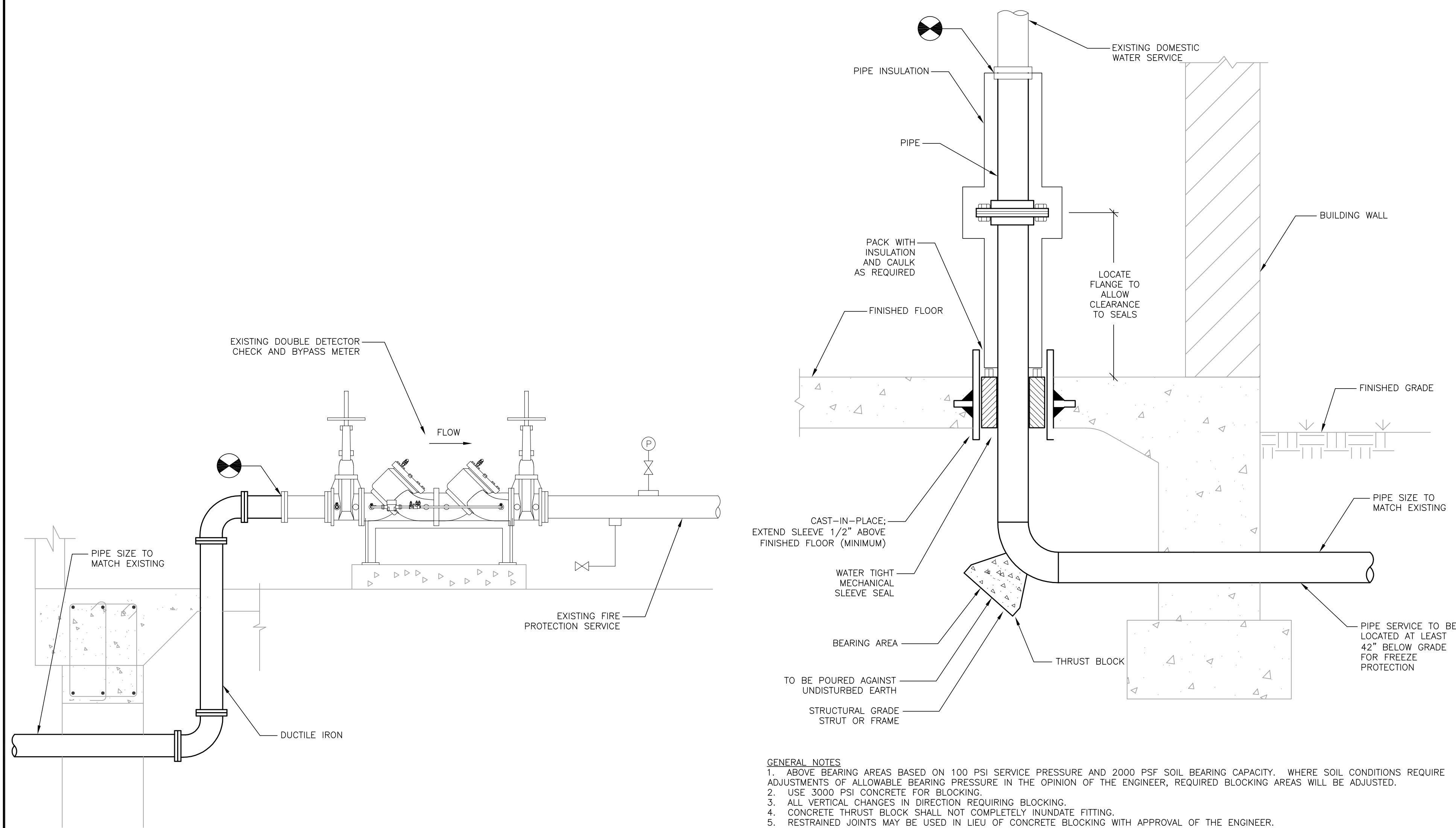


- GENERAL NOTES:
- DO NOT INSTALL CHECK VALVES OR PRESSURE REDUCING DEVICES UPSTREAM AND LESS THAN 5 PIPE DIAMETERS DOWNSTREAM OF THE WATER METER.
  - ELBOWS, BENDS & NON-CONCENTRIC REDUCERS SHOULD BE A MINIMUM OF TEN (10) PIPE DIAMETERS UPSTREAM OF THE METER.

1 BUILDING 53 DOMESTIC WATER & FIRE PROTECTION CONNECTION WITH EXISTING BACKFLOW PREVENTERS

2 FIRE PROTECTION BACKFLOW REPLACEMENT NOT TO SCALE

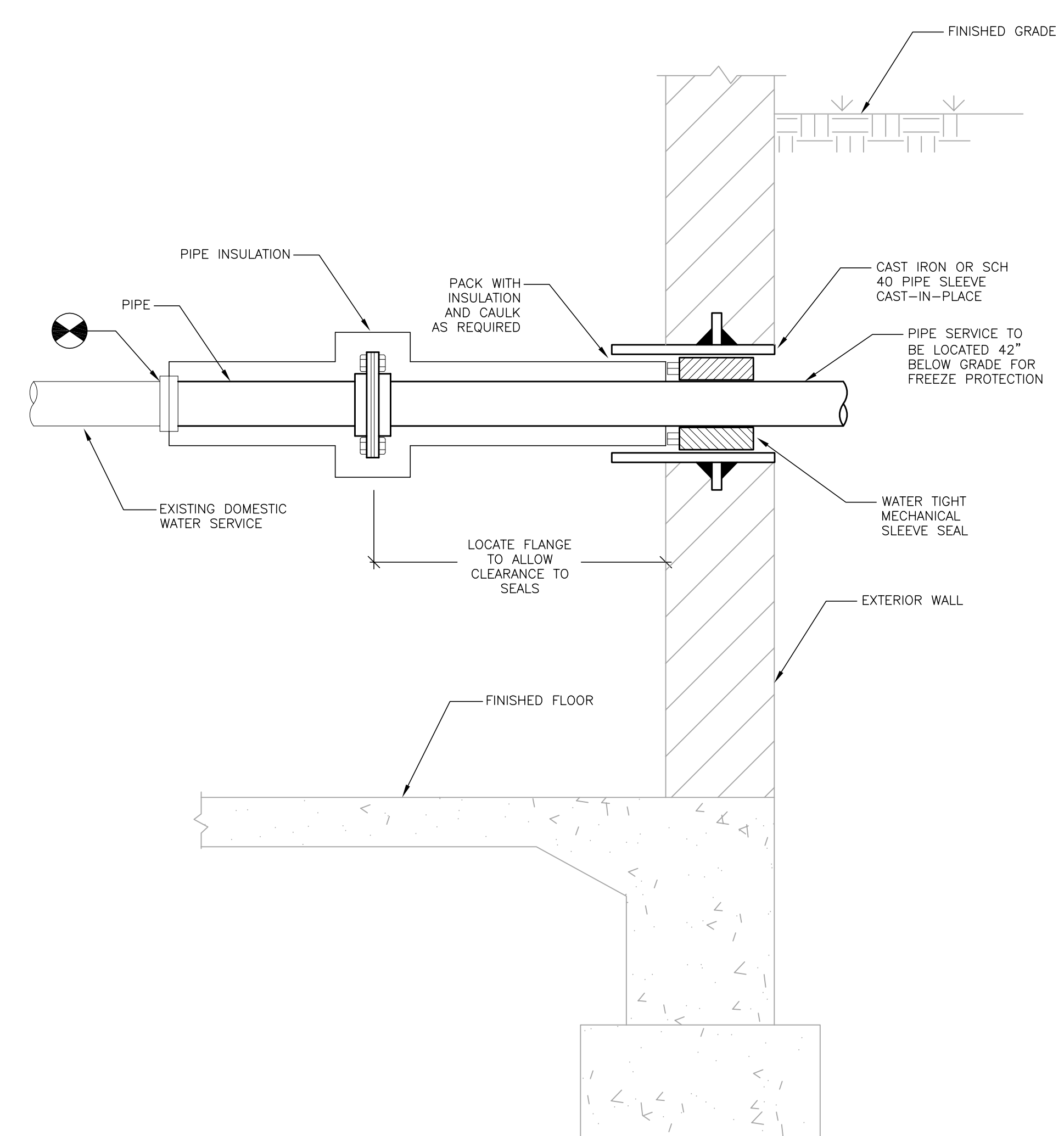
3 DOMESTIC WATER BACKFLOW REPLACEMENT NOT TO SCALE



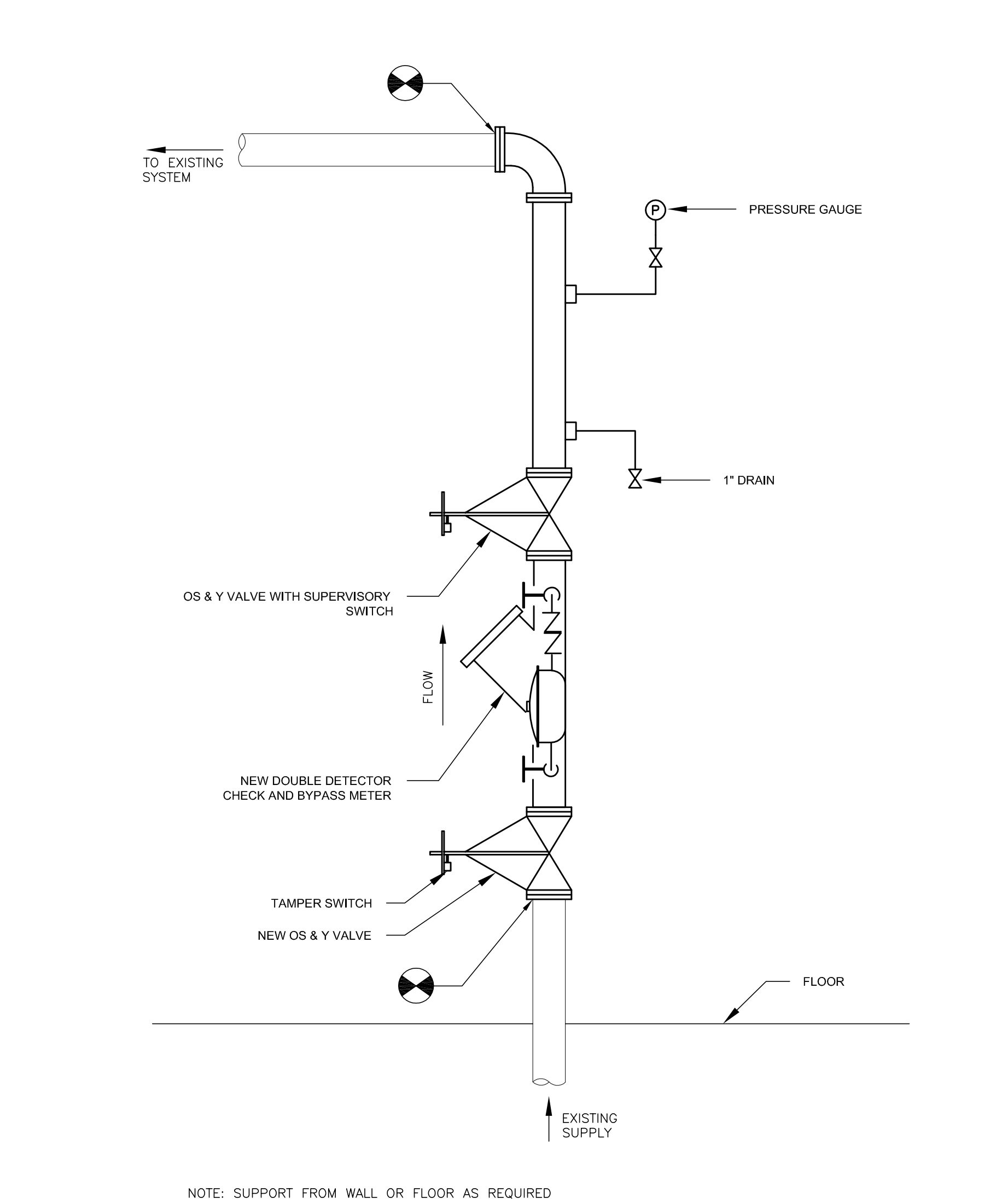
- GENERAL NOTES:
- ABOVE BEARING AREAS BASED ON 100 PSI SERVICE PRESSURE AND 2000 PSF SOIL BEARING CAPACITY. WHERE SOIL CONDITIONS REQUIRE ADJUSTMENTS OF ALLOWABLE BEARING PRESSURE IN THE OPINION OF THE ENGINEER, REQUIRED BLOCKING AREAS WILL BE ADJUSTED.
  - USE 3000 PSI CONCRETE FOR BLOCKING.
  - ALL VERTICAL CHANGES IN DIRECTION REQUIRING BLOCKING.
  - CONCRETE THRUST BLOCK SHALL NOT COMPLETELY INUNDATE FITTING.
  - RESTRAINED JOINTS MAY BE USED IN LIEU OF CONCRETE BLOCKING WITH APPROVAL OF THE ENGINEER.
  - CONTRACTOR TO SUBMIT PRICING FOR FLOOR SLAB PIPE PENETRATIONS AS A SEPARATE LINE ITEM.

4 FIRE PROTECTION CONNECTION WITH EXISTING BACKFLOW PREVENTOR NOT TO SCALE

5 FLOOR SLAB PIPE PENETRATION NOT TO SCALE



6 EXTERIOR PIPE PENETRATION - BELOW GRADE NOT TO SCALE



7 BUILDING 228 FIRE PROTECTION ENTRANCE NOT TO SCALE

Revisions	Date

**THE SIGMA GROUP**  
Single Source. Sound Solutions.  
www.thesigmagroup.com  
1300 West Canal Street  
Milwaukee, WI 53233  
Phone: 414-643-4200  
Fax: 414-643-4210

**HGA**  
Architecture | Engineering | Planning  
Hammel, Green and Associates, Inc.  
333 East Erie Street  
Milwaukee, Wisconsin USA 53202  
Telephone 414.278.8200 Facsimile 414.278.7734

**PHASE 2 - CONSTRUCTION DOCUMENTS: MAY 22, 2012**

Drawing Title	PHASE 2 - BUILDING SERVICE DETAILS
Approved: Division Chief	
Approved: Service Director	

Project Title	VA MEDICAL CENTER REPLACE EXISTING WATER MAINS PROJECT
Building Number	
Location	HINES, ILLINOIS

Date	MAY 22, 2012
Project No.	VA#69PD-RA-1465 HGA#2606-008-00
Checked	R.RUFFIN
Drawn	C.POWERS
Drawing No.	PL-700
Dwg. 09 of 09	

Office of  
Facilities  
Management  
Department of  
Veterans Affairs