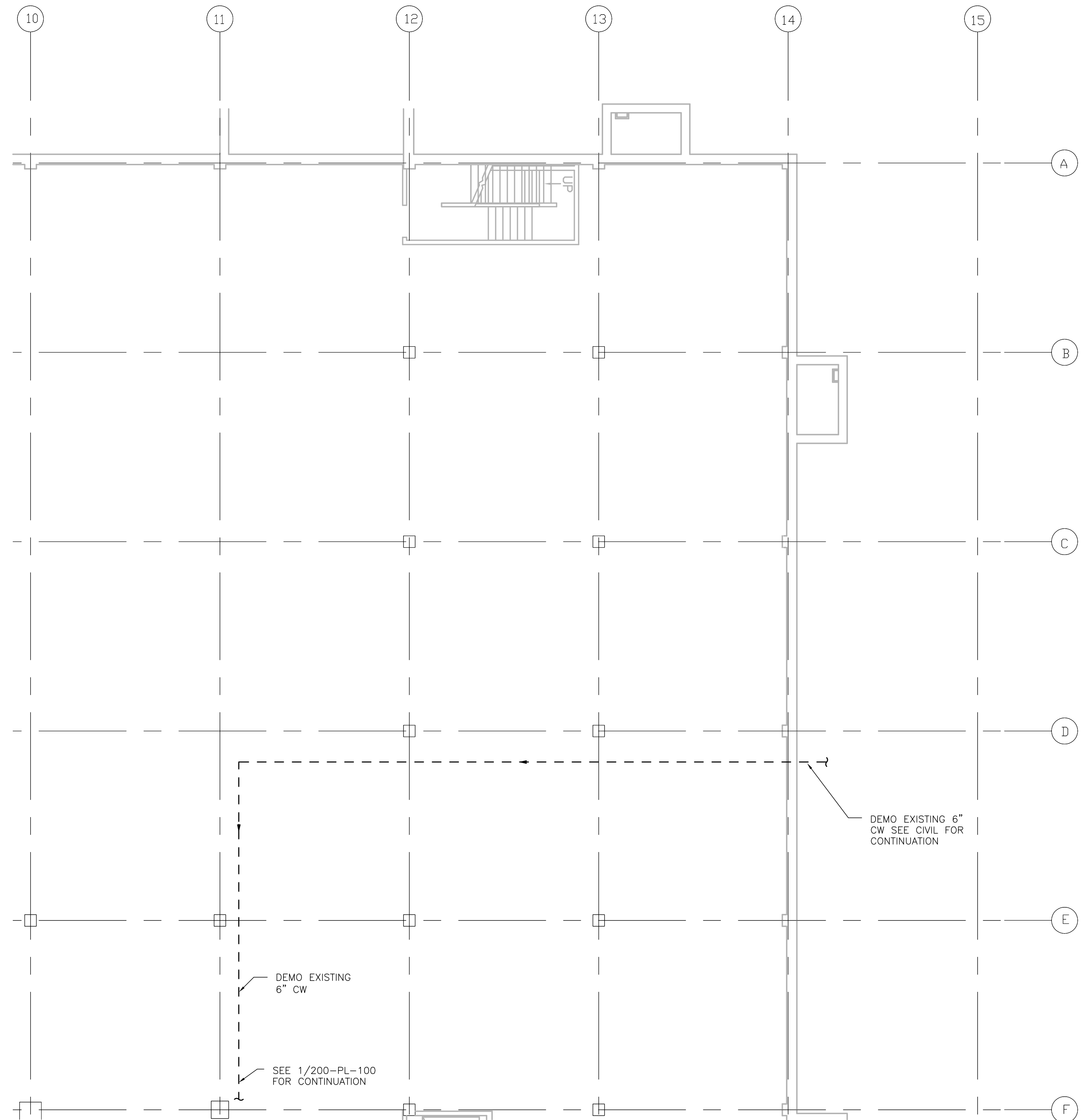


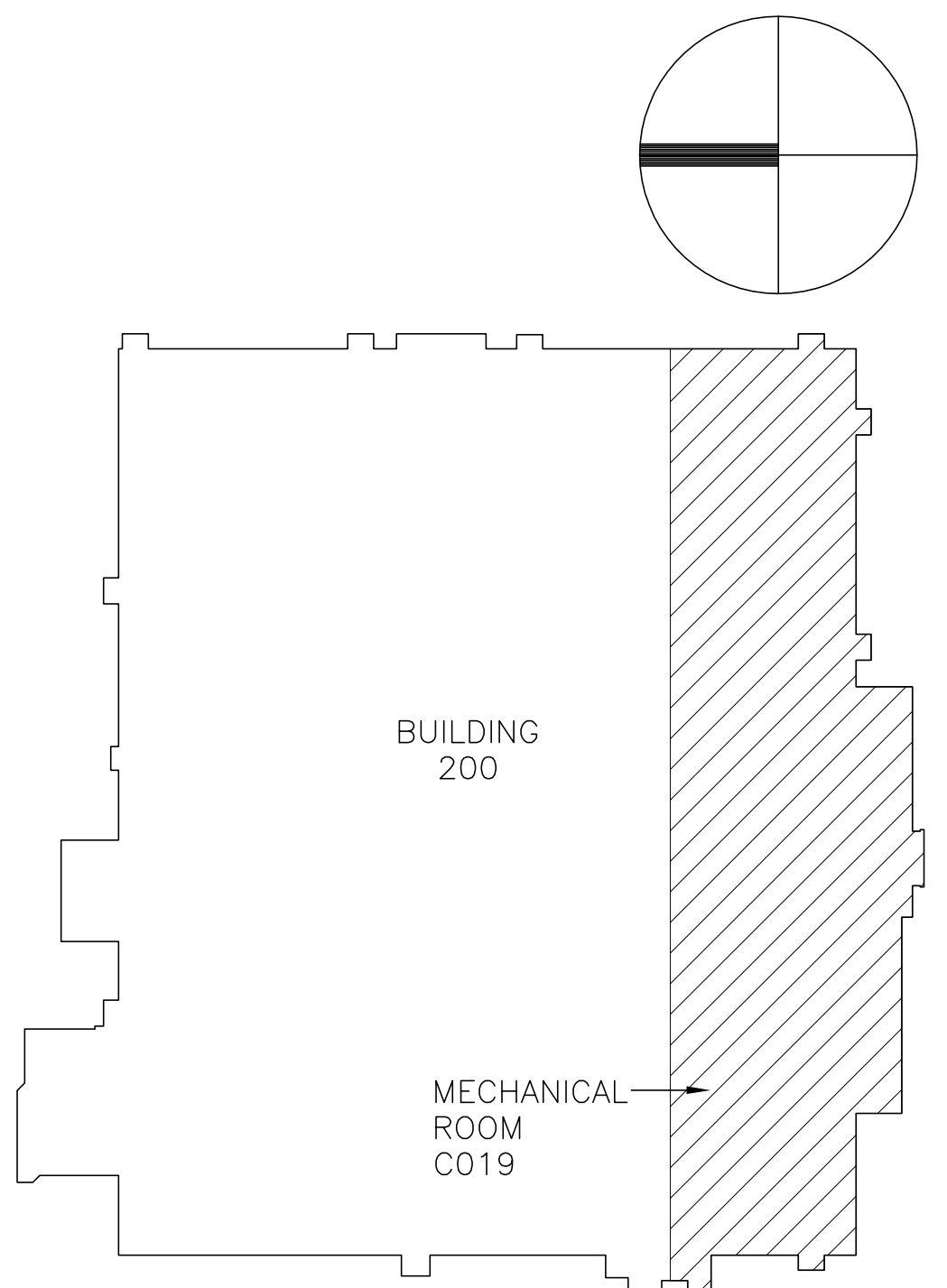
1 DOMESTIC WATER & FIRE PROTECTION DEMO PLAN (BUILDING 200 SUB-BASEMENT)
1/8" = 1'-0"



2 DOMESTIC WATER & FIRE PROTECTION DEMO PLAN (BUILDING 200 SUB-BASEMENT)
1/8" = 1'-0"

GENERAL NOTES:

1. THE INFORMATION PERTAINING TO EXISTING CONDITIONS SUCH AS LOCATIONS OF FIXTURES, EQUIPMENT, PIPING AND OTHER BUILDING CONDITIONS HAS BEEN BASED ON "AS-BUILT" RECORDS AND FIELD VERIFICATION WITH LIMITED ACCESS. LAYOUT AND DISTRIBUTION OF PIPING SHOWN MAY BE DIFFERENT THAN IN THE FIELD.
2. THE CONTRACTOR IS RESPONSIBLE FOR ALL CUTTING AND PATCHING REQUIRED FOR INSTALLATION OF PIPING AND ACCESSORIES. ALL PENETRATIONS THROUGH FIRE RATED WALLS AND FLOORS SHALL BE PROPERLY FIRESTOPPED. METHOD OF FIRESTOPPING SHALL BE REVIEWED AND APPROVED BY ENGINEER PRIOR TO INSTALLATION.
3. PLUMBING PIPING AND ACCESSORIES INDICATED AS DASHED SHALL BE DEMOLISHED. PROTECT ENDS OF PIPING FOR FUTURE RECONNECTION.
4. THE CONTRACTOR SHALL MAINTAIN SERVICE TO EXISTING FIXTURES WHICH SUPERCEDES ANY DEMOLITION OR REROUTING INDICATED. NOTIFY ENGINEER OF ANY CONFLICTS.
5. ITEMS TO BE REMOVED SHALL BECOME THE PROPERTY OF THE CONTRACTOR AND SHALL BE REMOVED FROM THE SITE, UNLESS NOTED OTHERWISE.
6. INFORMATION SHOWN SOLID, WITH LIGHT LINETYPE REFERENCES EXISTING CONDITIONS AND SHALL REMAIN UNLESS NOTED OTHERWISE.
7. THE CONTRACTOR SHALL COORDINATE ALL SHUT-DOWNS AND TIE-INS WITH OWNER PRIOR TO BEGINNING WORK. REFER TO SPECIFICATION SECTION 010000 GENERAL REQUIREMENTS FOR SHUT-DOWN REQUIREMENTS AND PROCEDURES.
8. ALL EXISTING FIRE SUPPRESSION COMPONENTS SHALL REMAIN IN SERVICE UNLESS OTHERWISE NOTED.
9. CONTRACTOR TO SUBMIT ALL PIPE ROUTING TO THE A/E, COTR, AND PIPE SHOP PRIOR TO CONSTRUCTION.



Revisions	Date

THE SIGMA GROUP
Single Source, Sound Solutions
www.thesigmagroup.com
1300 West Canal Street
Milwaukee, WI 53233
Phone: 414-643-4200
Fax: 414-643-4210

HGA
Architecture | Engineering | Planning
Hammel, Green and Abrahamson, Inc.
333 East Erie Street
Milwaukee, Wisconsin USA 53202
Telephone 414.278.8200 Facsimile 414.278.7734

PHASE 2 - CONSTRUCTION DOCUMENTS: MAY 22, 2012

Drawing Title	Project Title
PHASE 2 - BUILDING 200 SUB-BASEMENT BUILDING WATER SERVICE DEMO PLANS	VA MEDICAL CENTER REPLACE EXISTING WATER MAINS PROJECT
Approved: Division Chief	Building Number 200
Approved: Service Director	Checked R.RUFFIN
	Drawn C.POWERS
	Location HINES, ILLINOIS

Date MAY 22, 2012	Project No. VA#69PD-RA-1465 HGA#2606-008-00
Drawing No. 200-PL-100	Dwg. Of

Office of
Facilities
Management

Department of
Veterans Affairs