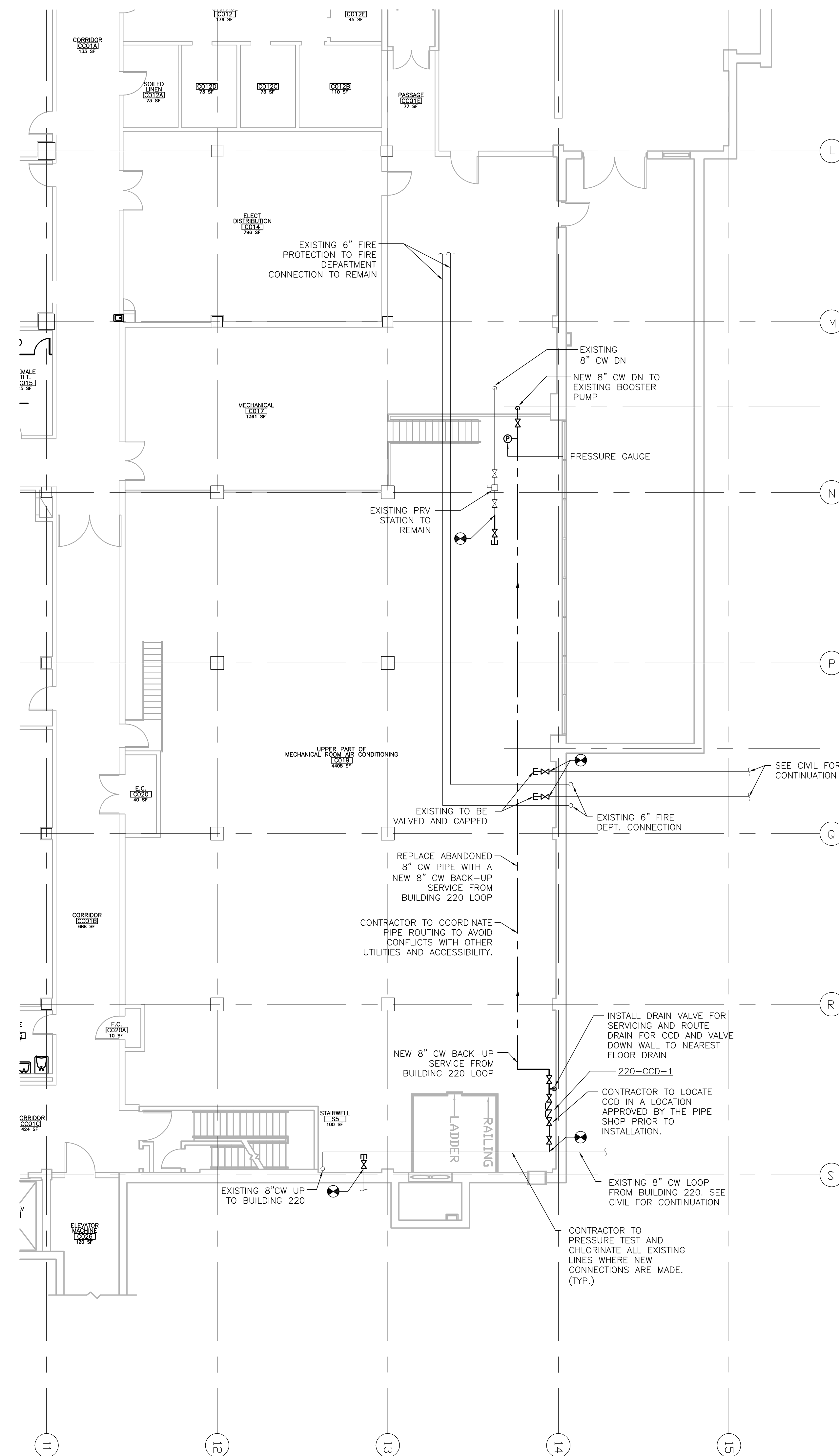
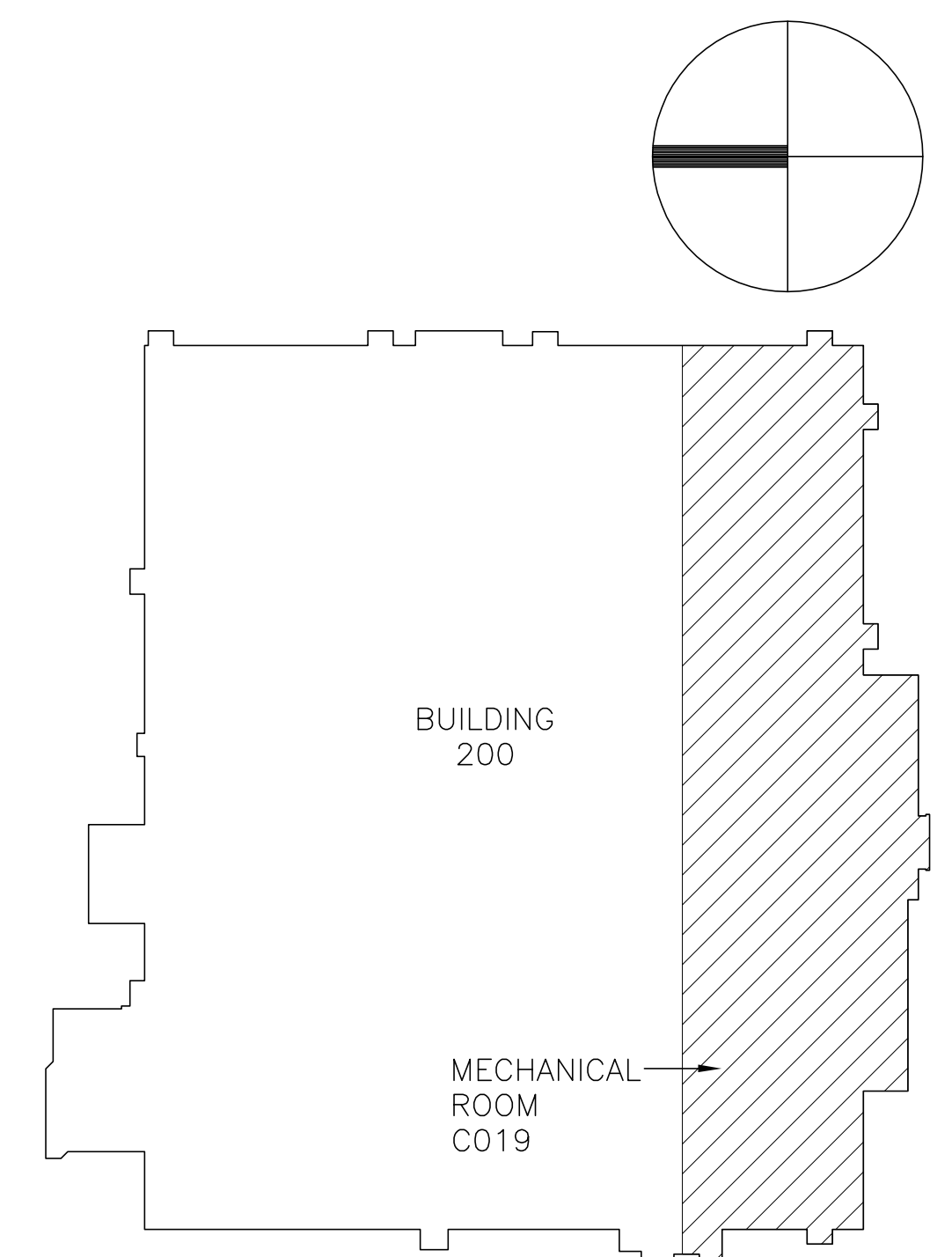


3. THE INFORMATION PERTAINING TO EXISTING CONDITIONS SUCH AS LOCATIONS OF FIXTURES, EQUIPMENT, PIPING AND OTHER BUILDING CONDITIONS HAS BEEN BASED ON "AS-BUILT" RECORDS AND FIELD VERIFICATION WITH LIMITED ACCESS. LAYOUT AND DISTRIBUTION OF PIPING SHOWN MAY BE DIFFERENT THAN IN THE FIELD.
2. THE CONTRACTOR IS RESPONSIBLE FOR ALL CUTTING AND PATCHING REQUIRED FOR INSTALLATION OF PIPING AND ACCESSORIES. ALL PENETRATIONS THROUGH FIRE RATED WALLS AND FLOORS SHALL BE PROPERLY FIRESTOPPED. METHOD OF FIRESTOPPING SHALL BE REVIEWED AND APPROVED BY ENGINEER PRIOR TO INSTALLATION.
3. PLUMBING PIPING AND ACCESSORIES INDICATED AS DASHED SHALL BE DEMOLISHED. PROTECT ENDS OF PIPING FOR FUTURE RECONNECTION.
4. THE CONTRACTOR SHALL MAINTAIN SERVICE TO EXISTING FIXTURES WHICH SUPERCEDES ANY DEMOLITION OR REROUTING INDICATED. NOTIFY ENGINEER OF ANY CONFLICTS.
5. ITEMS TO BE REMOVED SHALL BECOME THE PROPERTY OF THE CONTRACTOR AND SHALL BE REMOVED FROM THE SITE, UNLESS NOTED OTHERWISE.
6. INFORMATION SHOWN SOLID, WITH LIGHT LINETYPE REFERENCES EXISTING CONDITIONS AND SHALL REMAIN UNLESS NOTED OTHERWISE.
7. THE CONTRACTOR SHALL COORDINATE ALL SHUT-DOWNS AND TIE-INS WITH OWNER PRIOR TO BEGINNING WORK. REFER TO SPECIFICATION SECTION 010000 GENERAL REQUIREMENTS FOR SHUT-DOWN REQUIREMENTS AN PROCEDURES.
8. ALL EXISTING FIRE SUPPRESSION COMPONENTS SHALL REMAIN IN SERVICE UNLESS OTHERWISE NOTED.
9. CONTRACTOR TO SUBMIT ALL PIPE ROUTING TO THE A/E, COTR, AND PIPE SHOP PRIOR TO CONSTRUCTION.



1 DOMESTIC WATER & FIRE PROTECTION PLUMBING PLAN (BUILDING 200 BASEMENT)
1/8" = 1'-0"


[illegible]

THE SIGMA GROUP
Single Source. Sound Solutions.
www.thesigmagroup.com
1300 West Canal Street
Milwaukee, WI 53233
Phone: 414-643-4200
Fax: 414-643-4210

hGA.

Architecture | Engineering | Planning
Hammel, Green and Abrahamson, Inc.
333 East Erie Street
Milwaukee, Wisconsin USA 53202
Telephone 414.278.8200 Facsimile 414.278.2734

PHASE 2 - CONSTRUCTION DOCUMENTS: MAY 22, 2012

Drawing Title PHASE 2 - BUILDING 200 BASEMENT BUILDING WATER SERVICE FLOOR PLAN		Project Title VA MEDICAL CENTER REPLACE EXISTING WATER MAINS PROJECT		Date MAY 22, 2012		Office of Facilities Management	 Department of Veterans Affairs
Approved: Division Chief		Building Number 200	Checked R.RUFFIN	Drawn C.POWERS	Project No. VA#69PD-RA-1465 HGA#2606-008-00		
Approved: Service Director		Location HINES, ILLINOIS		DRAWING NO. 200-PL-201 Dwg. ___ Of ___			