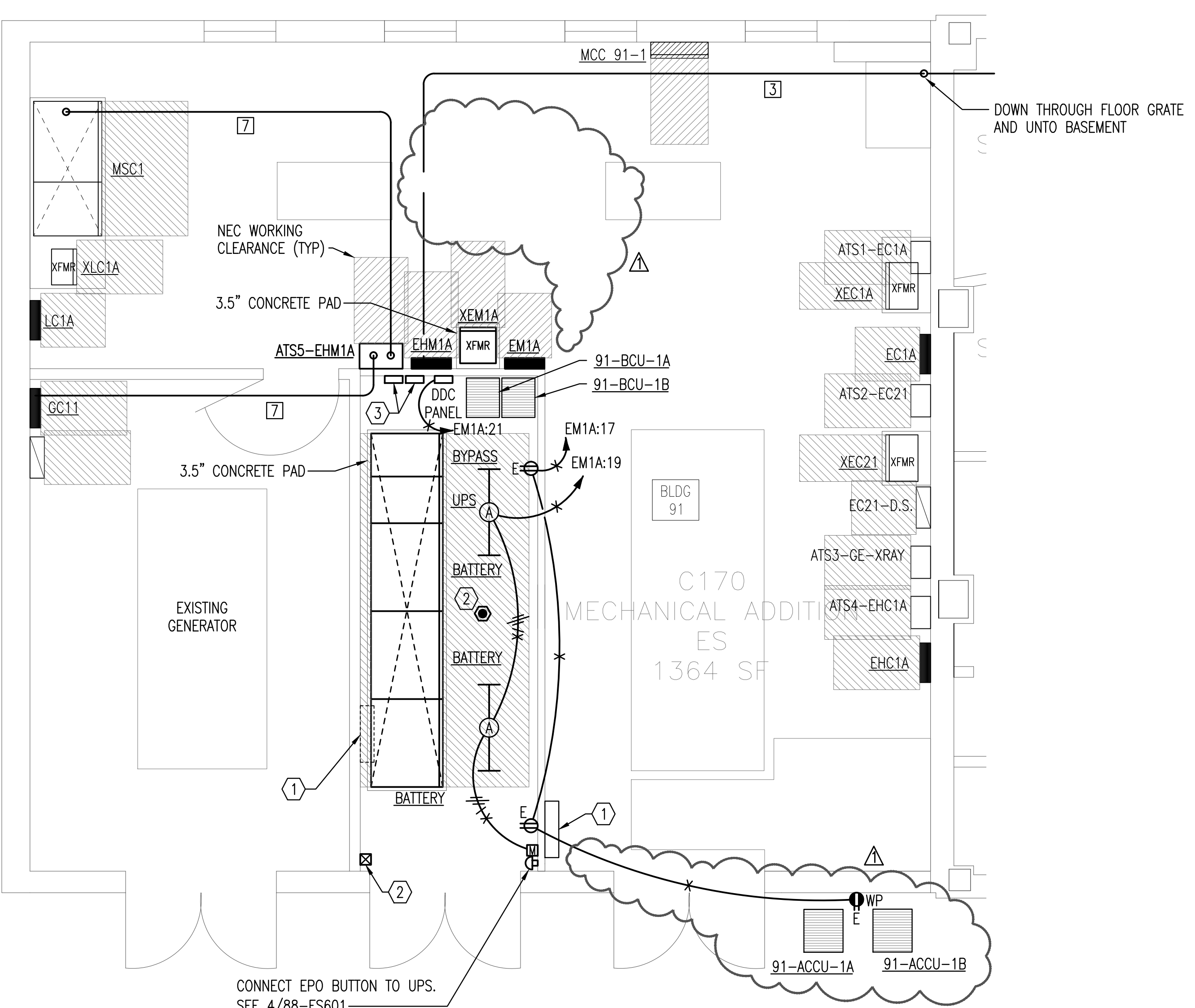
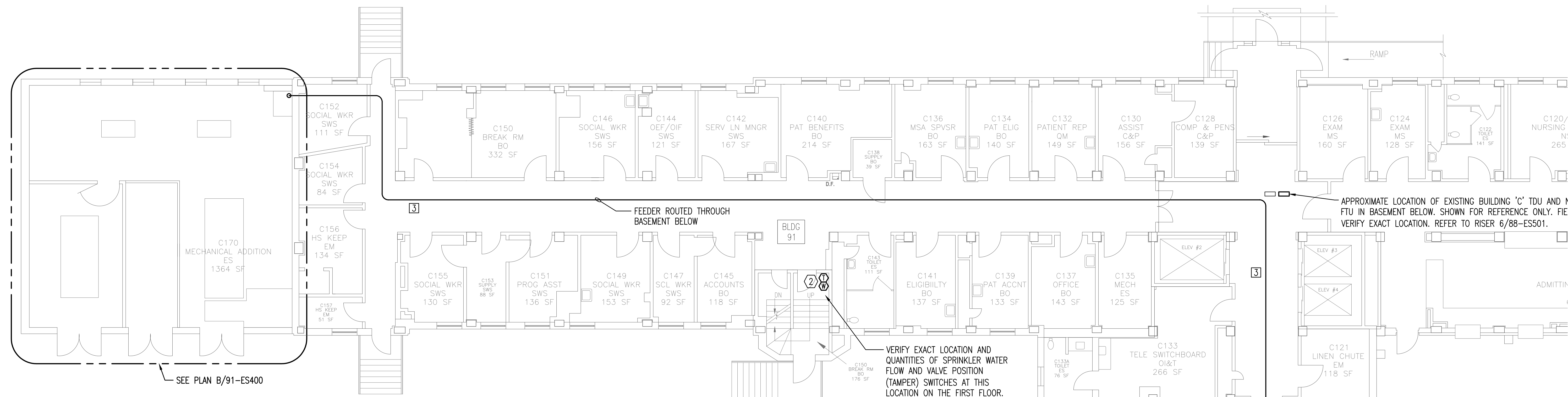


**PLAN NOTES:**

- BRANCH CIRCUITS ARE INDICATED AS ONE CIRCUIT HOME RUNS WITH INDIVIDUAL NEUTRALS. A MAXIMUM OF THREE CIRCUITS (MAXIMUM OF THREE PHASE CONDUCTORS) MAY BE GROUPED IN A SINGLE CONDUIT. WHERE MULTIPLE CIRCUITS ARE LOCATED IN THE SAME RACEWAY, JUNCTION BOX OR ENCLOSURE, NEUTRALS SHALL BE MARKED OR LABELED TO INDICATE WHICH CIRCUIT THEY ARE ASSOCIATED WITH.
- A GROUND CONDUCTOR SIZED PER N.E.C. ARTICLE 250 IS REQUIRED IN ALL CONDUITS.
- FOR CONNECTION REQUIREMENTS TO MECHANICAL UNITS, SEE MECHANICAL EQUIPMENT CONNECTION SCHEDULE.
- ALL PENETRATIONS IN THE RATED WALLS AND CEILINGS SHALL BE SEALED WITH A MATERIAL CAPABLE OF PREVENTING THE PASSAGE OF FLAMES AND HOT GASSES. THE SEALANT SHALL HAVE A T-RATING OF ONE HOUR.
- ALL PIPING, CONDUIT, AND OUTLET BOXES (ELECTRIC, TELEPHONE, COMPUTER, ETC.) IN THE RATED WALLS OR CEILING SHALL BE CONSTRUCTED OF NON-COMBUSTIBLE MATERIAL.
- OUTLET BOXES (ELECTRIC, TELEPHONE, COMPUTER, ETC.) SHALL BE LIMITED TO TWO OUTLET BOXES PER STUD SPACE. OUTLET BOXES ON OPPOSITE SIDES OF THE RATED WALLS SHALL BE SEPARATED BY A HORIZONTAL DISTANCE OF 24 INCHES.

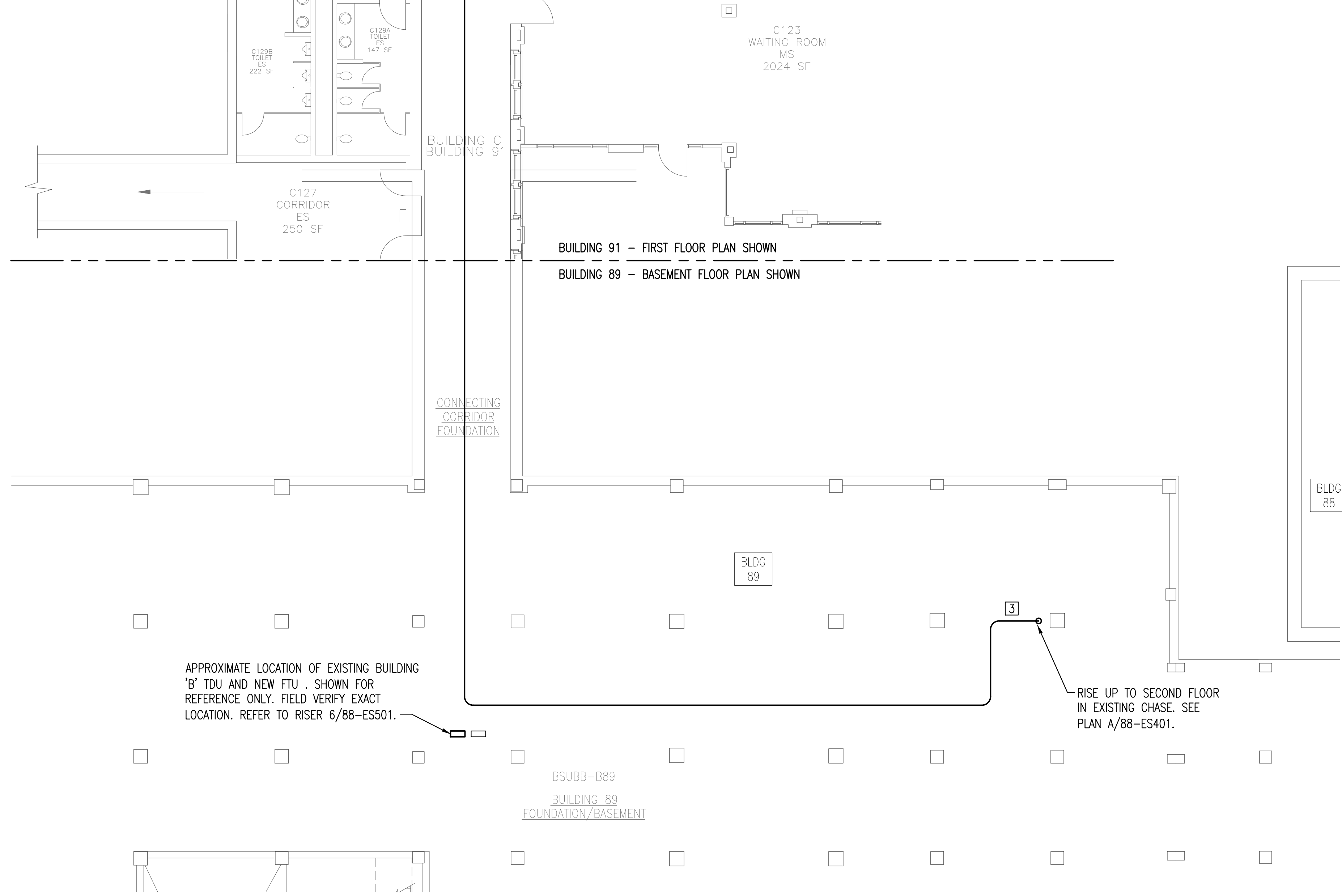
**KEYED NOTES:**

- EXTEND POWER AND CONTROL CONNECTIONS TO RELOCATED FEEDER-ROOT PANEL.
- CONNECT NEW FIRE ALARM DEVICE TO EXISTING SYSTEM SERVING BUILDING. EXTEND CIRCUITING TO NEW DEVICES AS NECESSARY. ALL WIRING IS TO BE IN CONDUIT.
- TDU AND FTU. REFER TO RISER 6/88-ESS01.



**ELECTRICAL FLOOR PLAN - FIRST FLOOR - BLDG 91**

SCALE: 1/4" = 1'-0"  
0 1 2 5 10



**ELECTRICAL FLOOR PLAN - FIRST FLOOR/BASEMENT - BLDG 89-91**

SCALE: 1/8" = 1'-0"  
0 2 4 10 20

<p>Addendum 1 Revisions</p>	<p>5/xx/17 Date</p>
---------------------------------	-------------------------

**Mechanical Consultants Inc.**  
 254 LAURA, SUITE 200 WICHITA, KANSAS 67211  
 (316) 265-5301 FAX 265-8413 engr@mciks.com

**Professional Engineering Consultants, P.A.**  
 616 VERMONT STREET, SUITE B • LAWRENCE, KANSAS 66044  
 785-842-6464 • FAX 785-842-4140

**SERVICE INDEX LEGEND**

DIR:	OFFICE OF THE DIRECTOR
ES:	ENGINEERING SERVICE
EM:	ENVIRONMENTAL MANAGEMENT
FM:	FINANCIAL MANAGEMENT
CS:	CLINICAL SUPPORT
BH:	BEHAVIORAL HEALTH
MS:	MEDICINE SERVICE
NS:	NURSING SERVICE
SWS:	SOCIAL WORK SERVICE
OI&T:	OFFICE OF INFORMATION & TECHNOLOGY

**VA EASTERN KANSAS HEALTH CARE SYSTEM**

Dwight D. Eisenhower VA Medical Center, Leavenworth  
 Colmery-O'Neil VA Medical Center, Topeka

<p>Drawing Title: <b>FIRST FLOOR UPS ROOM ELECTRICAL PLAN AND BASEMENT CONDUIT ROUTING PLAN</b></p>	<p>Project Title: <b>UPGRADE PBX/COMPUTER ROOM AIR CONDITIONING &amp; CONNECT TO EMERGENCY POWER</b></p>
<p>Scale: <b>AS NOTED</b></p>	<p>Building Number: <b>88, 89, &amp; 91</b></p>
<p>Approved:</p>	<p>Checked By: <b>DDC</b></p>
	<p>Drawn By: <b>JEM</b></p>

<p>Location: Dwight D. Eisenhower VA Medical Center 4101 S. 4th St. Trwy., Leavenworth, KS 66048</p>
--

**BID DOCUMENTS**

Date: **1/17/2017**

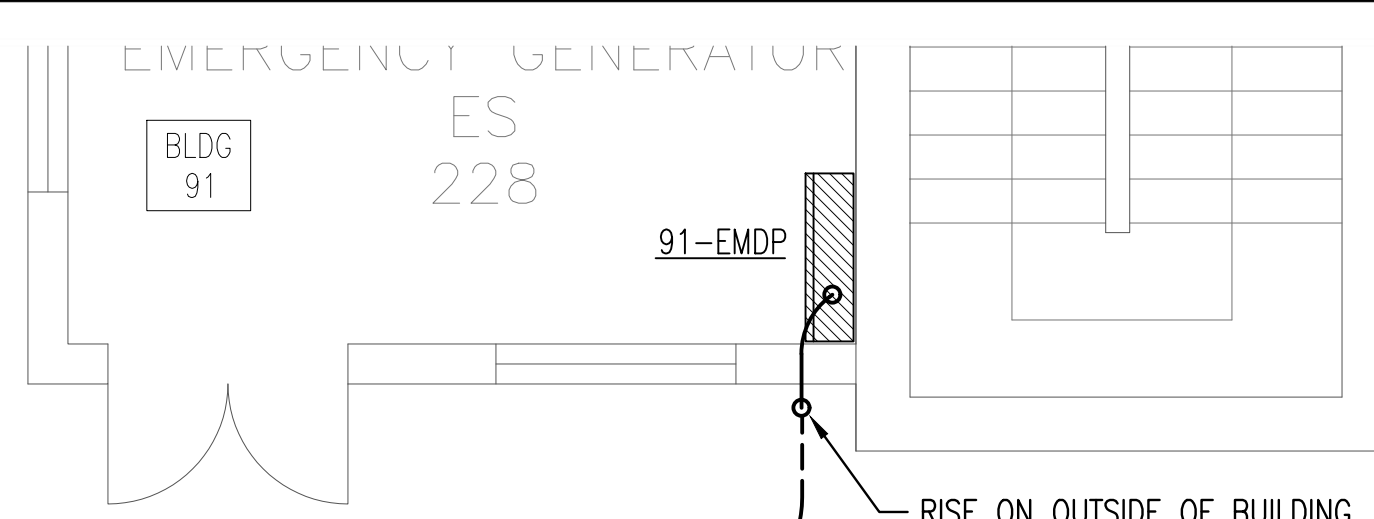
Project No.: **589A6-16-201**

Drawing No.: **91-ES400**

Dwg. of

Department of Veterans Affairs

Small text at the bottom left corner of the page.



- PLAN NOTES:**
- BRANCH CIRCUITS ARE INDICATED AS ONE CIRCUIT HOME RUNS WITH INDIVIDUAL NEUTRALS. A MAXIMUM OF THREE CIRCUITS (MAXIMUM OF THREE PHASE CONDUCTORS) MAY BE GROUPED IN A SINGLE CONDUIT. WHERE MULTIPLE CIRCUITS ARE LOCATED IN THE SAME RACEWAY, JUNCTION BOX OR ENCLOSURE, NEUTRALS SHALL BE MARKED OR LABELED TO INDICATE WHICH CIRCUIT THEY ARE ASSOCIATED WITH.
  - A GROUND CONDUCTOR SIZED PER N.E.C. ARTICLE 250 IS REQUIRED IN ALL CONDUITS.
  - FOR CONNECTION REQUIREMENTS TO MECHANICAL UNITS, SEE MECHANICAL EQUIPMENT CONNECTION SCHEDULE.
  - ALL PENETRATIONS IN THE RATED WALLS AND CEILINGS SHALL BE SEALED WITH A MATERIAL CAPABLE OF PREVENTING THE PASSAGE OF FLAMES AND HOT GASSES. THE SEALANT SHALL HAVE A T-RATING OF ONE HOUR.
  - ALL PIPING, CONDUIT, AND OUTLET BOXES (ELECTRIC, TELEPHONE, COMPUTER, ETC.) IN THE RATED WALLS OR CEILING SHALL BE CONSTRUCTED OF NON-COMBUSTIBLE MATERIAL.
  - OUTLET BOXES (ELECTRIC, TELEPHONE, COMPUTER, ETC.) SHALL BE LIMITED TO TWO OUTLET BOXES PER STUD SPACE. OUTLET BOXES ON OPPOSITE SIDES OF THE RATED WALLS SHALL BE SEPARATED BY A HORIZONTAL DISTANCE OF 24 INCHES.

REMOVE AND REPLACE IN KIND FULL PANELS OF SIDEWALK AS NECESSARY FOR INSTALLATION

CORE DRILL AND LINK-SEAL CONDUIT PENETRATIONS THROUGH WALL BELOW GRADE

PANEL IS MOUNTED IN PBX ROOM ABOVE. FEEDER IS ROUTED IN TUNNEL BELOW

TUNNEL ACCESS HATCH

NEC WORKING CLEARANCE (TYP)

88-PBXAC

CAREFULLY COORDINATE ROUTING AND DEPTH OF CONDUIT WITH EXISTING UNDERGROUND STORM WATER, MEDIUM VOLTAGE ELECTRICAL, AND TELECOMMUNICATIONS UTILITIES IN AREA.

CONNECT TO NEAREST NON-EMERGENCY CONVENIENCE RECEPTACLE CIRCUIT IN SPACE.

CRAC

88-CRU-2A

ON ROOF

88-CRU-2B

WP

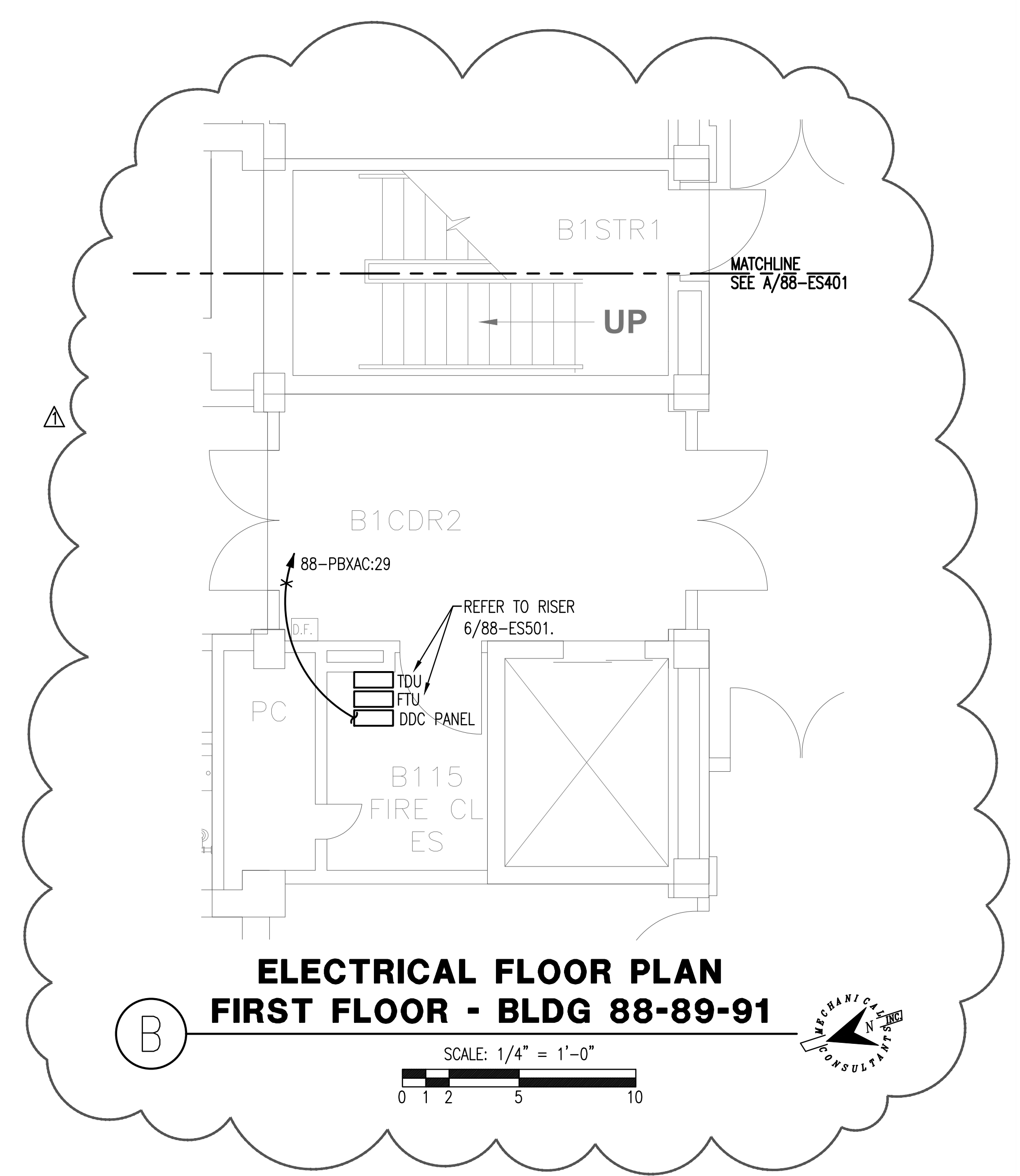
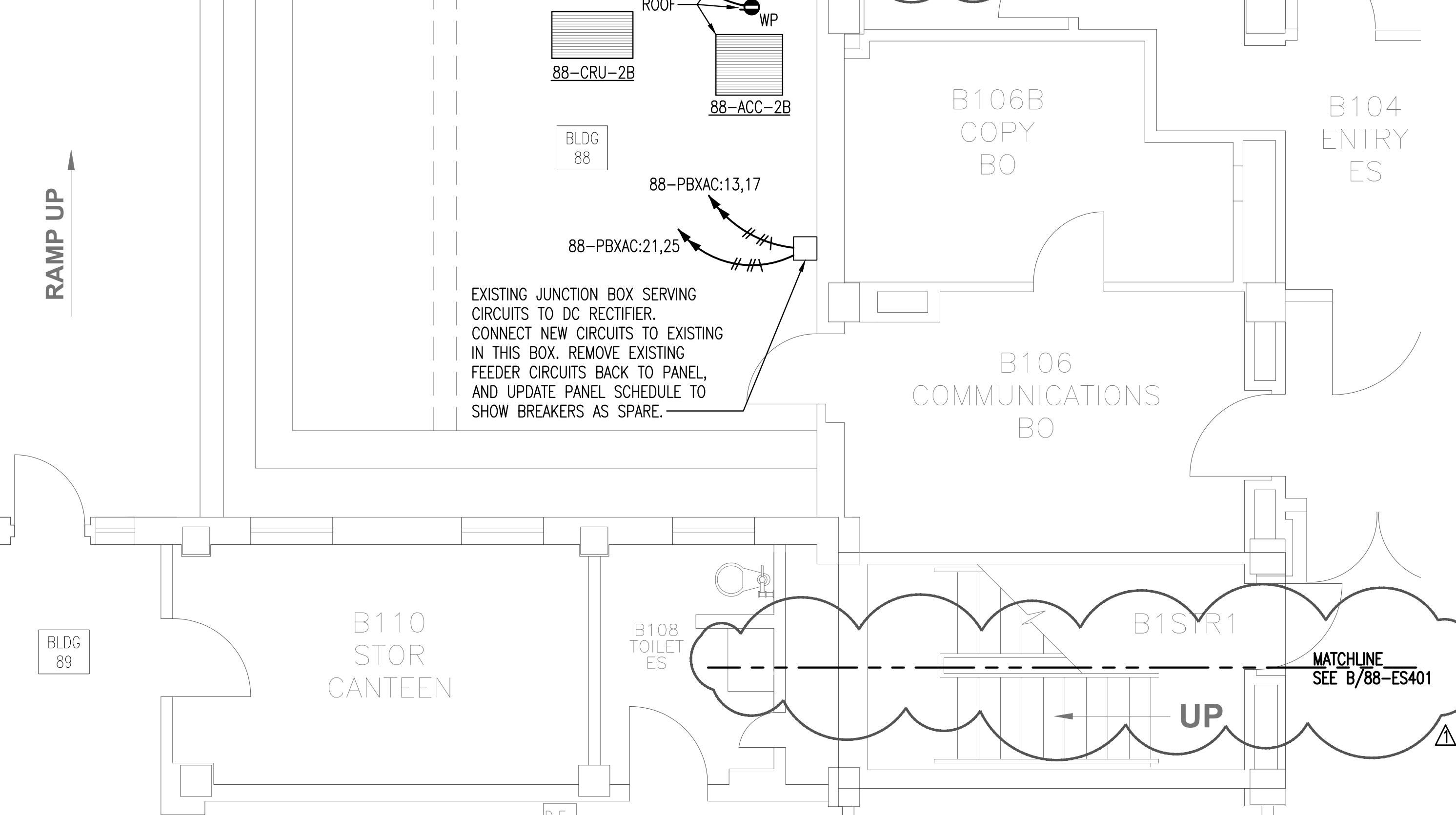
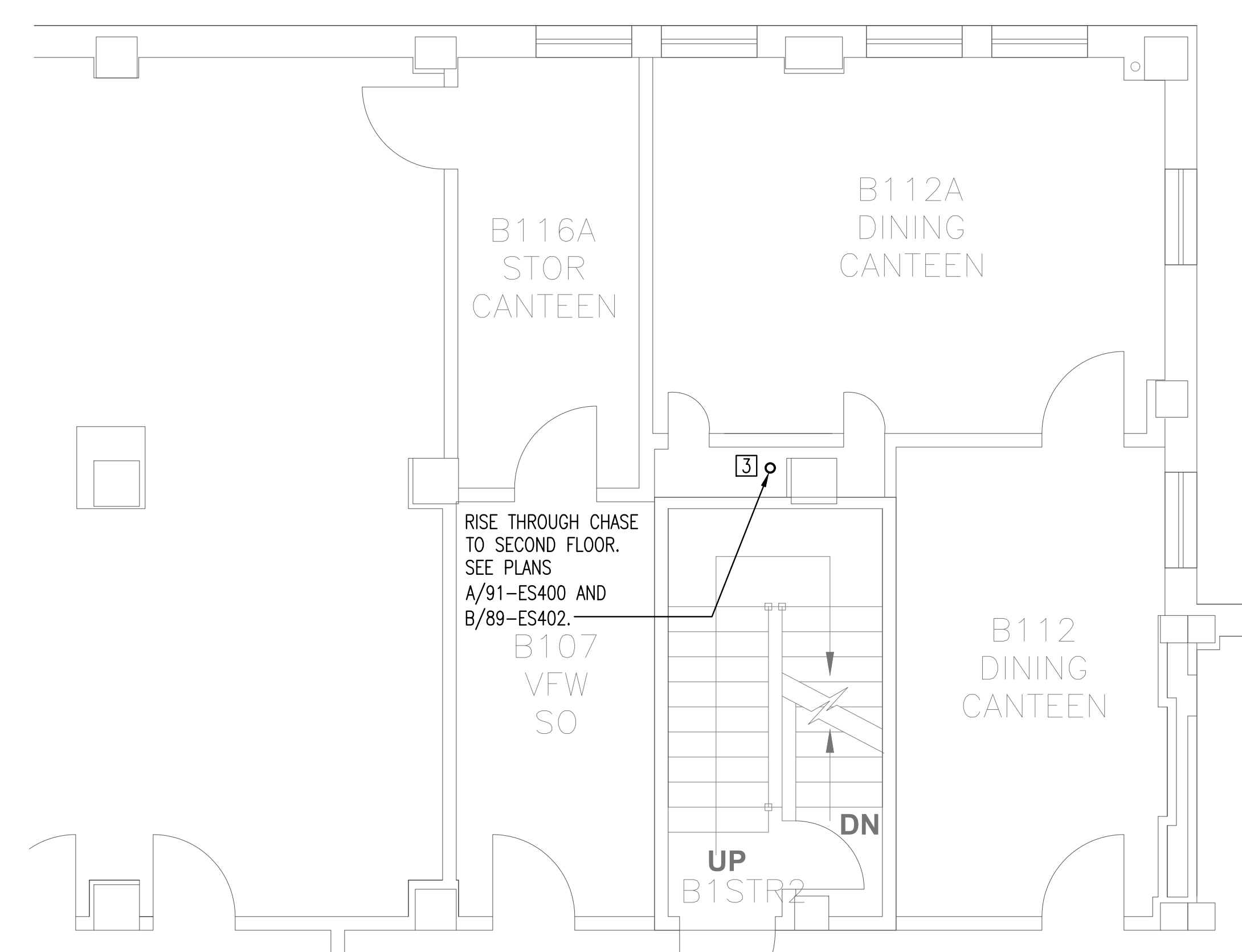
88-ACC-2A

88-ACC-2B

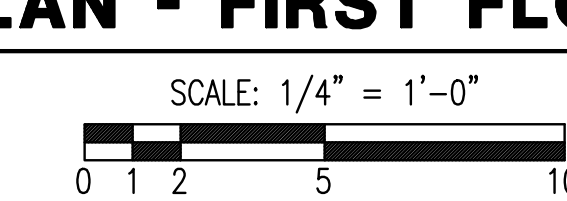
88-PBXAC:13,17

88-PBXAC:21,25

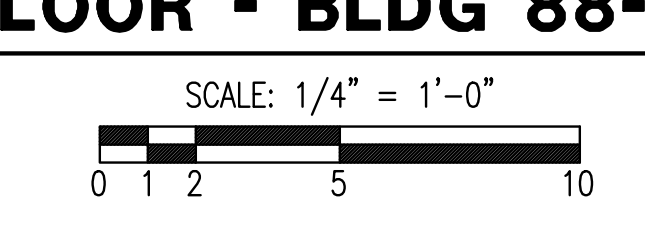
EXISTING JUNCTION BOX SERVING CIRCUITS TO DC RECTIFIER. CONNECT NEW CIRCUITS TO EXISTING IN THIS BOX. REMOVE EXISTING FEEDER CIRCUITS BACK TO PANEL, AND UPDATE PANEL SCHEDULE TO SHOW BREAKERS AS SPARE.



**A ELECTRICAL FLOOR PLAN - FIRST FLOOR - BLDG 88-89-91**



**B ELECTRICAL FLOOR PLAN FIRST FLOOR - BLDG 88-89-91**



**Mechanical Consultants Inc.**

254 LAURA, SUITE 200 WICHITA, KANSAS 67211  
(316) 265-5301 FAX 265-8413 engr@mciks.com

**Professional Engineering Consultants, P.A.**

616 VERMONT STREET, SUITE B • LAWRENCE, KANSAS 66044  
785-842-6464 • FAX 785-842-4140

**SERVICE INDEX LEGEND**

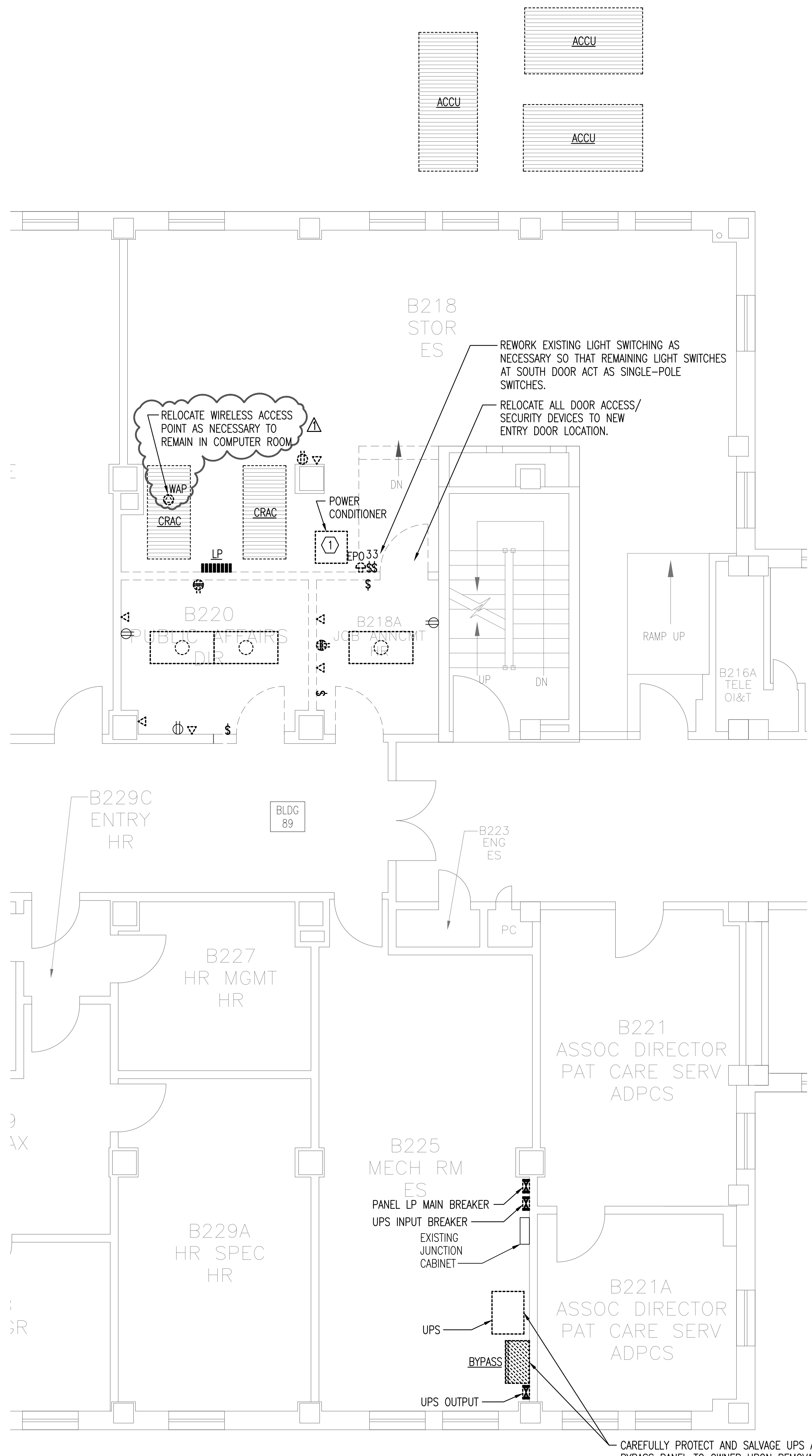
DIR: OFFICE OF THE DIRECTOR  
ES: ENGINEERING SERVICE  
EM: ENVIRONMENTAL MANAGEMENT  
FM: FINANCIAL MANAGEMENT  
CS: CLINICAL SUPPORT  
BH: BEHAVIORAL HEALTH  
MS: MEDICINE SERVICE  
NS: NURSING SERVICE  
SWS: SOCIAL WORK SERVICE  
OI&T: OFFICE OF INFORMATION & TECHNOLOGY

**VA EASTERN KANSAS HEALTH CARE SYSTEM**

Dwight D. Eisenhower VA Medical Center, Leavenworth  
Colmery-O'Neil VA Medical Center, Topeka

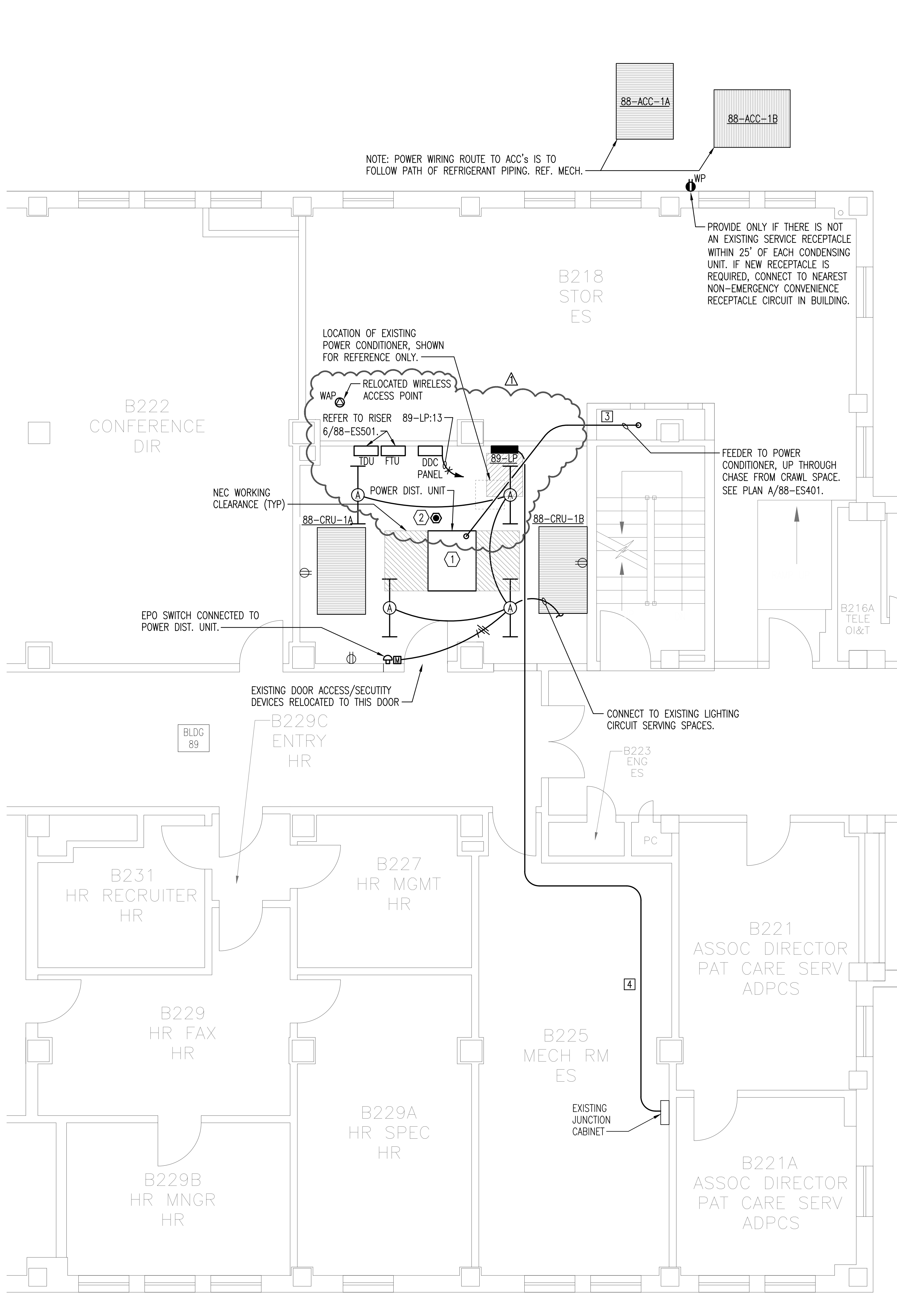
Drawing Title: <b>FIRST FLOOR PBX ROOM ELECTRICAL PLAN</b>	Project Title: <b>UPGRADE PBX/COMPUTER ROOM AIR CONDITIONING &amp; CONNECT TO EMERGENCY POWER</b>	Date: <b>1/17/2017</b>
Scale: <b>1/4" = 1' - 0"</b>	Building Number: <b>88, 89, &amp; 91</b>	Checked By: <b>DDC</b>
Drawn By: <b>JEM</b>	Location: <b>Dwight D. Eisenhower VA Medical Center 4101 S. 4th St. Trwy., Leavenworth, KS 66048</b>	Drawing No.: <b>88-ES401</b>
Approved:	Dwg. of	Department of Veterans Affairs

Addendum 1  
Revisions  
5/xx/17  
Date



**A ELECTRICAL DEMO PLAN - SECOND FLOOR - BLDG 89**

SCALE: 1/4" = 1'-0"  
0 1 2 5 10



**B ELECTRICAL FLOOR PLAN - SECOND FLOOR - BLDG 89**

SCALE: 1/4" = 1'-0"  
0 1 2 5 10

- PLAN NOTES:**
- BRANCH CIRCUITS ARE INDICATED AS ONE CIRCUIT HOME RUNS WITH INDIVIDUAL NEUTRALS. A MAXIMUM OF THREE CIRCUITS (MAXIMUM OF THREE PHASE CONDUCTORS) MAY BE GROUPED IN A SINGLE CONDUIT. WHERE MULTIPLE CIRCUITS ARE LOCATED IN THE SAME RACEWAY, JUNCTION BOX OR ENCLOSURE, NEUTRALS SHALL BE MARKED OR LABELED TO INDICATE WHICH CIRCUIT THEY ARE ASSOCIATED WITH.
  - A GROUND CONDUCTOR SIZED PER N.E.C. ARTICLE 250 IS REQUIRED IN ALL CONDUITS.
  - FOR CONNECTION REQUIREMENTS TO MECHANICAL UNITS, SEE MECHANICAL EQUIPMENT CONNECTION SCHEDULE.
  - ALL PENETRATIONS IN THE RATED WALLS AND CEILINGS SHALL BE SEALED WITH A MATERIAL CAPABLE OF PREVENTING THE PASSAGE OF FLAMES AND HOT GASSES. THE SEALANT SHALL HAVE A T-RATING OF ONE HOUR.
  - ALL PIPING, CONDUIT, AND OUTLET BOXES (ELECTRIC, TELEPHONE, COMPUTER, ETC.) IN THE RATED WALLS OR CEILING SHALL BE CONSTRUCTED OF NON-COMBUSTIBLE MATERIAL.
  - OUTLET BOXES (ELECTRIC, TELEPHONE, COMPUTER, ETC.) SHALL BE LIMITED TO TWO OUTLET BOXES PER STUD SPACE. OUTLET BOXES ON OPPOSITE SIDES OF THE RATED WALLS SHALL BE SEPARATED BY A HORIZONTAL DISTANCE OF 24 INCHES.

- KEYED NOTES:**
- ALL EXISTING BRANCH CIRCUITS AND FEEDER CIRCUIT SERVED BY THE EXISTING POWER CONDITIONER ARE TO BE EXTENDED TO AND RECONNECTED TO THE NEW POWER DISTRIBUTION UNIT. SCHEDULE AND SEQUENCE THE WORK WITH THE OWNER TO MINIMIZE DOWNTIME TO EACH CIRCUIT. ALL CIRCUIT CUT-OVERS WILL OCCUR ON NIGHTS AND WEEKENDS.
  - CONNECT NEW FIRE ALARM DEVICE TO EXISTING SYSTEM SERVING BUILDING. EXTEND CIRCUITING TO NEW DEVICES AS NECESSARY. ALL WIRING IS TO BE IN CONDUIT.

Revisions	Date

**Mechanical Consultants Inc.**  
 254 LAURA, SUITE 200 WICHITA, KANSAS 67211  
 (316) 265-5301 FAX 265-8413 engr@mciks.com

**Professional Engineering Consultants, P.A.**  
 616 VERMONT STREET, SUITE B - LAWRENCE, KANSAS 66044  
 785-842-6464 • FAX 785-842-4140

**SERVICE INDEX LEGEND**

DIR:	OFFICE OF THE DIRECTOR
ES:	ENGINEERING SERVICE
EM:	ENVIRONMENTAL MANAGEMENT
FM:	FINANCIAL MANAGEMENT
CS:	CLINICAL SUPPORT
BH:	BEHAVIORAL HEALTH
MS:	MEDICINE SERVICE
NS:	NURSING SERVICE
SWS:	SOCIAL WORK SERVICE
OI&T:	OFFICE OF INFORMATION & TECHNOLOGY

**VA EASTERN KANSAS HEALTH CARE SYSTEM**

Dwight D. Eisenhower VA Medical Center, Leavenworth  
 Colmery-O'Neil VA Medical Center, Topeka

Drawing Title:	SECOND FLOOR COMPUTER ROOM ELECTRICAL PLANS
Scale:	1/4" = 1' - 0"
Approved:	

Project Title:	UPGRADE PBX/COMPUTER ROOM AIR CONDITIONING & CONNECT TO EMERGENCY POWER
Building Number:	88, 89, & 91
Checked By:	DDC
Drawn By:	JEM
Location:	Dwight D. Eisenhower VA Medical Center 4101 S. 4th St. Trwy., Leavenworth, KS 66048

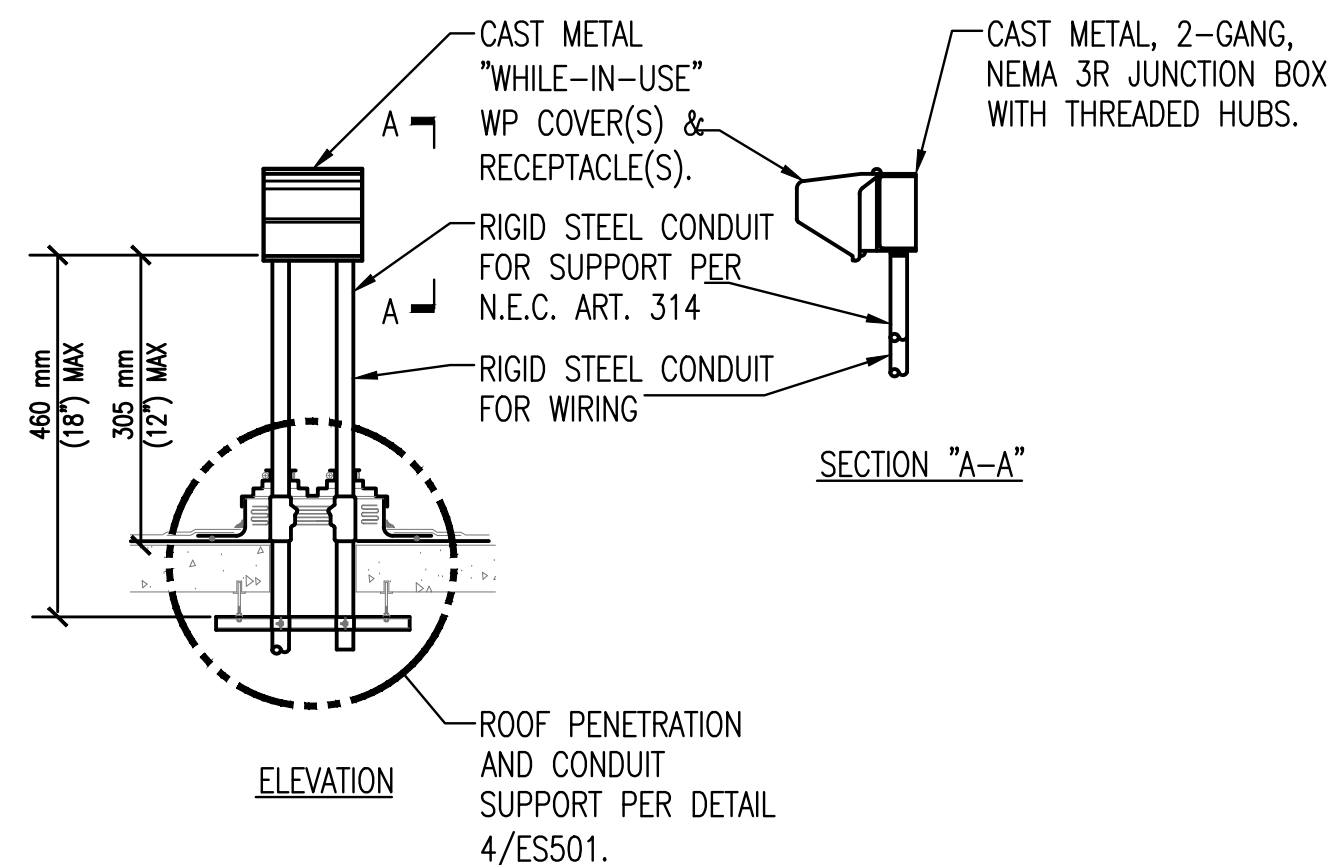
<b>BID DOCUMENTS</b>	
Date:	1/17/2017
Project No.:	589A6-16-201
Drawing No.:	89-ES402
Dwg. of:	

**NOTES:**

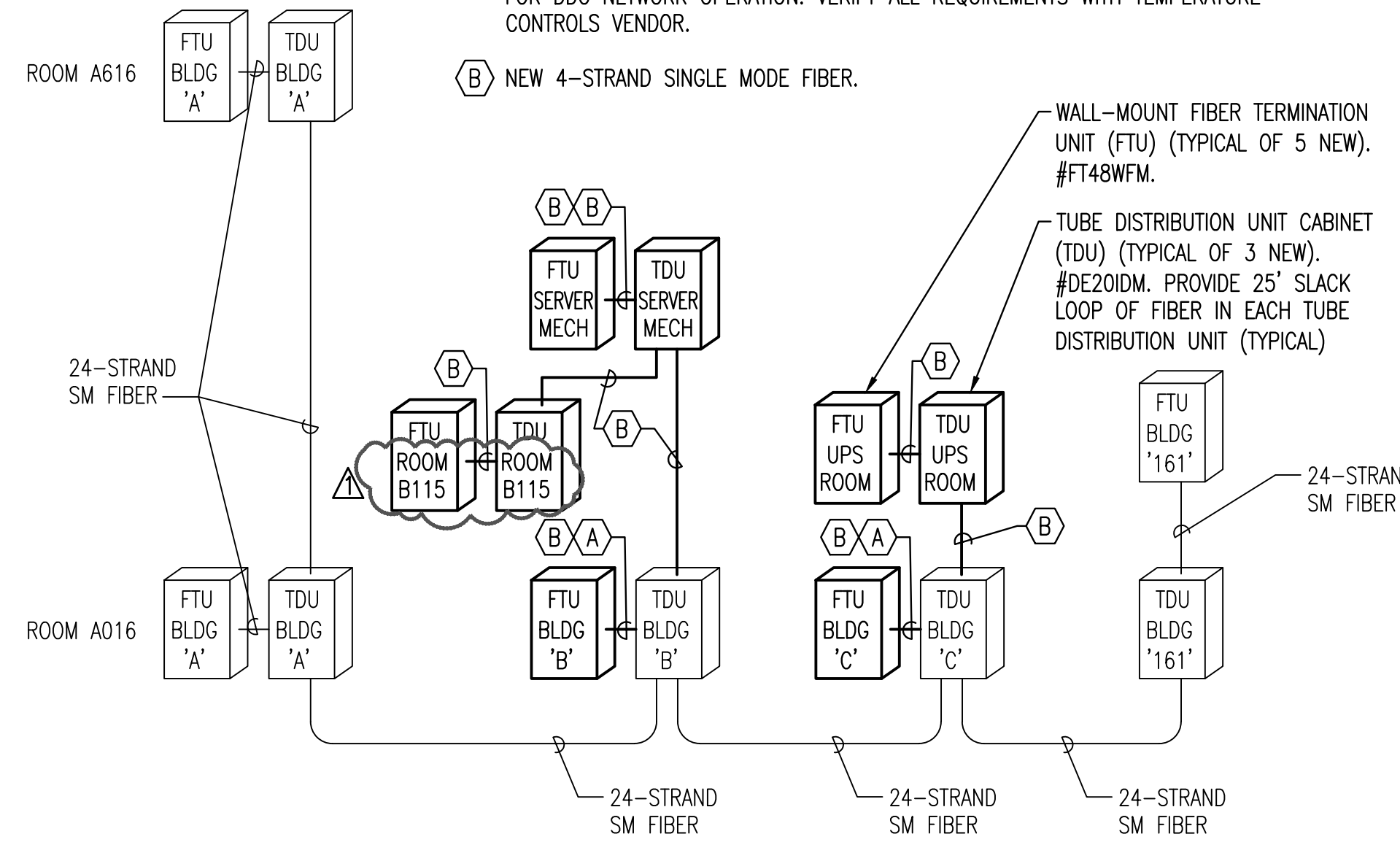
1. ALL CABLES ARE TO BE SUPPORTED FROM STRUCTURE AT 48" ON CENTER MAXIMUM.
2. VERIFY ALL ROUTING AND EQUIPMENT LOCATIONS WITH OWNER.
3. ALL FIBER AND RACEWAY TUBE IS TO BE FUTUREFLEX AIR-BLOWN FIBER BY SUMITOMO ELECTRIC (NO EQUALS). CONTACT ROB SUTTON, REGIONAL SALES MANAGER, (630)510-9019, RSUTTON@SUMITOMOELECTRIC.COM FOR PRODUCT AND INSTALLATION INFORMATION.
4. PROVIDE ALL TERMINATION HARDWARE, ACCESSORIES, AND TESTING OF THE FIBER PER V.A. STANDARDS.
5. COORDINATE ALL REQUIREMENTS WITH TEMPERATURE CONTROLS VENDOR WHO WILL UTILIZE THE FIBER.

**KEYED NOTES:**

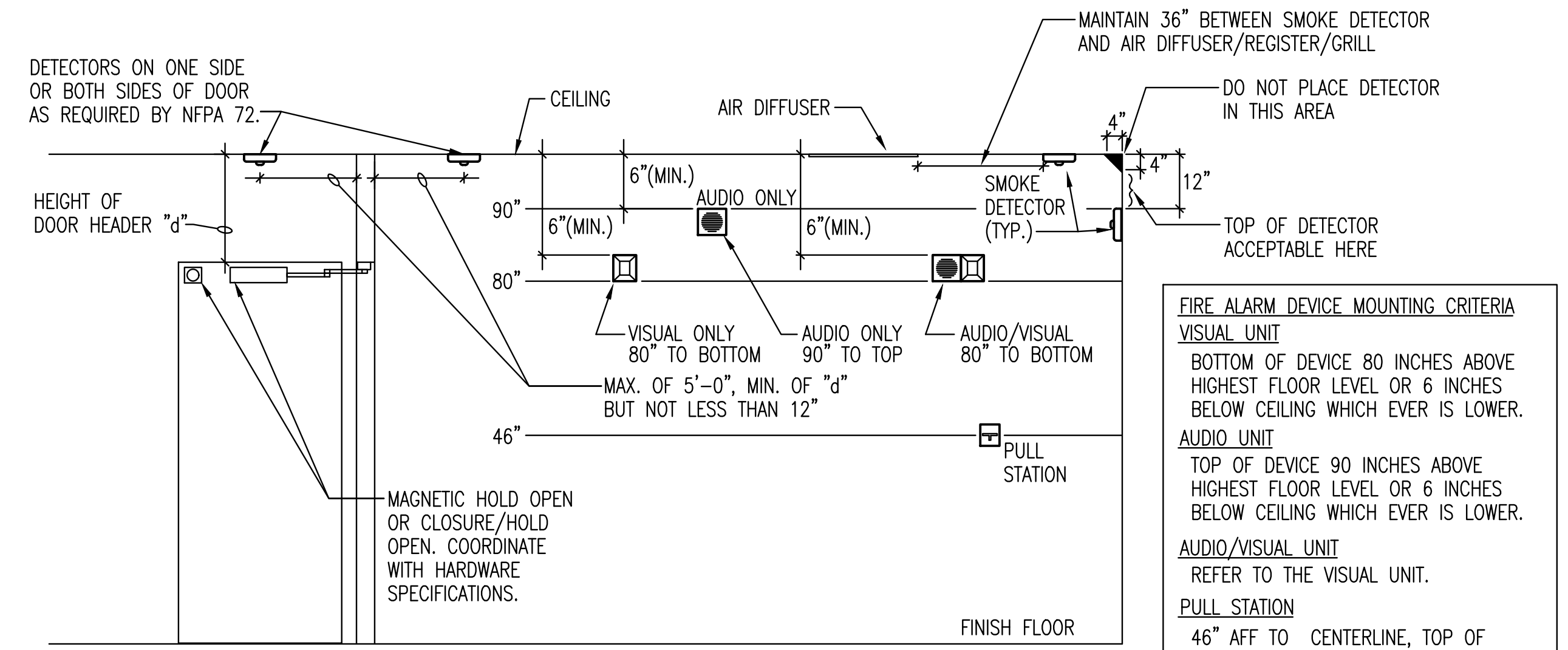
- (A) ROUTE EXISTING SLACK LOOP FROM 'TDU' TO 'FTU' AND BACK AGAIN. CUT AND TERMINATE ALL STRANDS IN 'FTU'. PATCH NEW FIBER INTO NETWORK AS NECESSARY FOR DDC NETWORK OPERATION. VERIFY ALL REQUIREMENTS WITH TEMPERATURE CONTROLS VENDOR.
- (B) NEW 4-STRAND SINGLE MODE FIBER.



**7 ROOF RECEPTACLE MOUNTING DETAIL**  
NO SCALE



**6 DDC FIBER OPTIC NETWORK RISER DIAGRAM**  
NO SCALE



**5 F.A. DEVICE MOUNTING DETAIL**  
NO SCALE

**FIRE ALARM DEVICE MOUNTING CRITERIA**

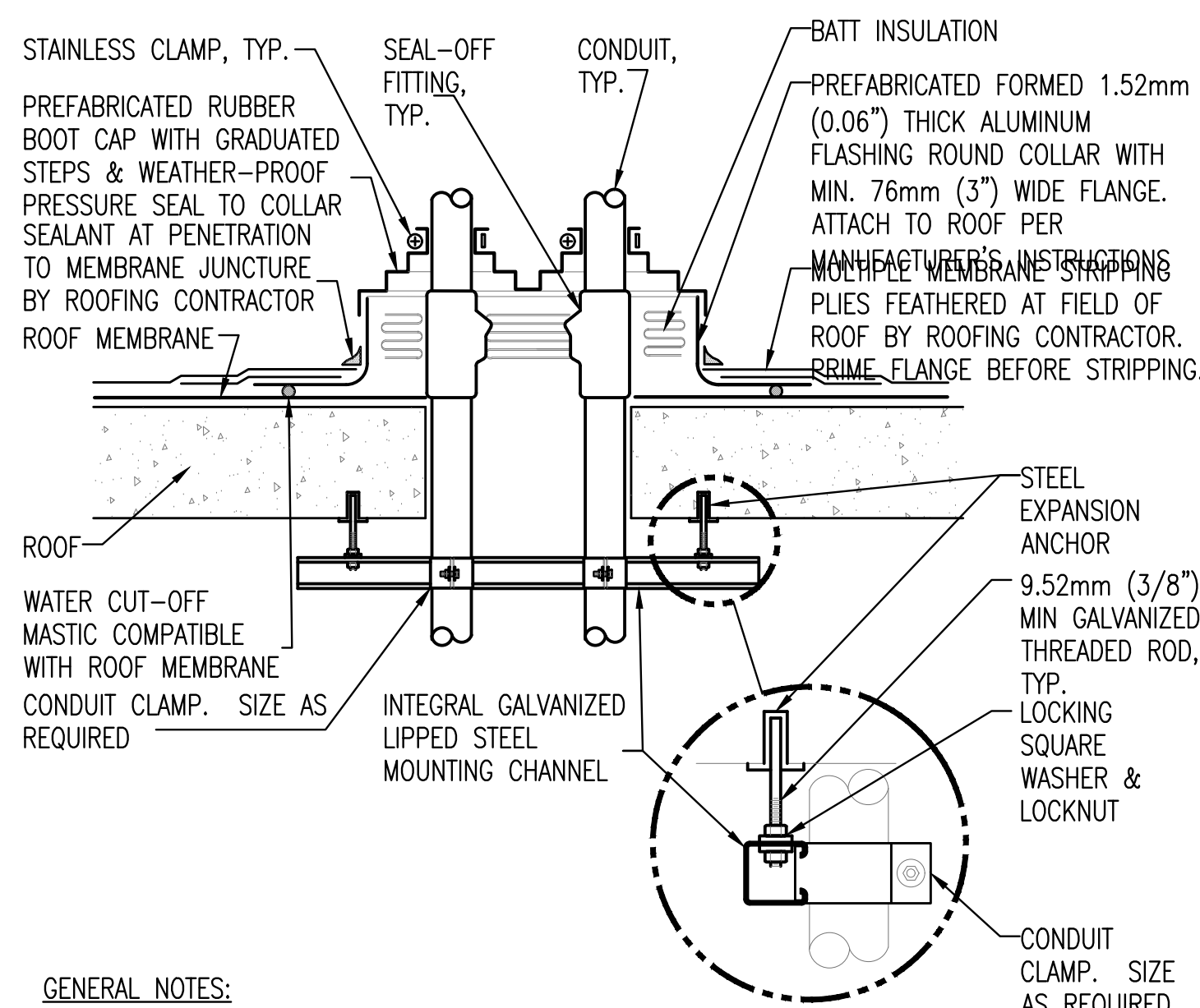
**VISUAL UNIT**  
BOTTOM OF DEVICE 80 INCHES ABOVE HIGHEST FLOOR LEVEL OR 6 INCHES BELOW CEILING WHICH EVER IS LOWER.

**AUDIO UNIT**  
TOP OF DEVICE 90 INCHES ABOVE HIGHEST FLOOR LEVEL OR 6 INCHES BELOW CEILING WHICH EVER IS LOWER.

**AUDIO/VISUAL UNIT**  
REFER TO THE VISUAL UNIT.

**PULL STATION**  
46" AFF TO CENTERLINE, TOP OF DEVICE SHALL NOT BE MORE THAN 48" AFF

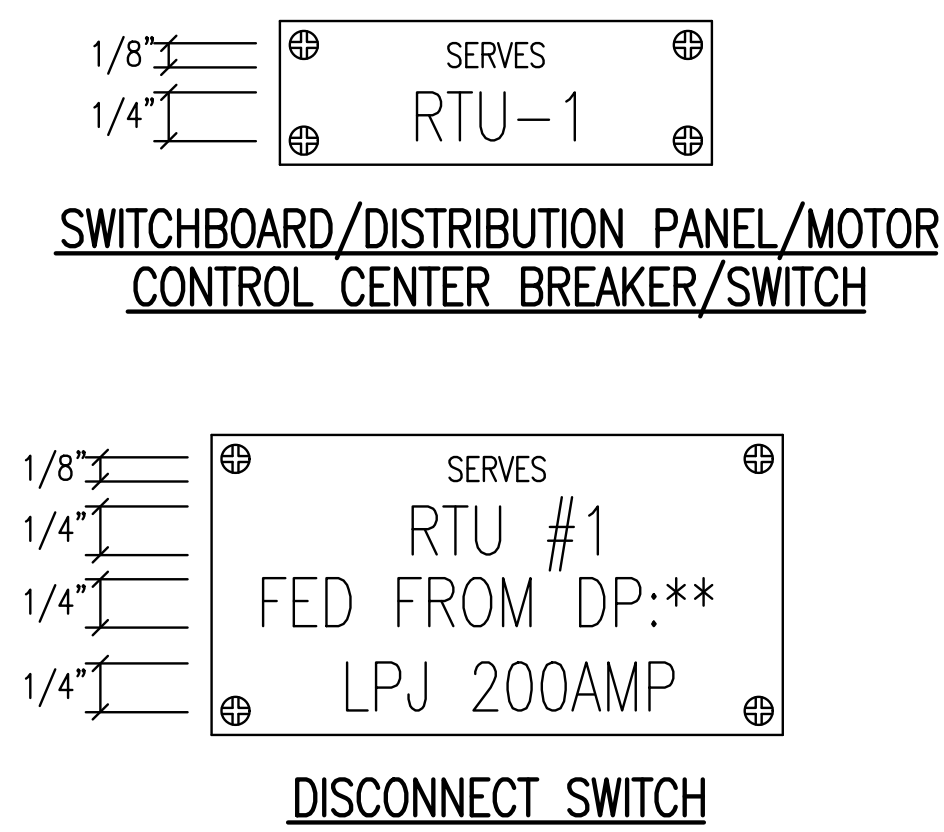
**GENERAL NOTE**  
THESE GUIDELINES SHALL BE USED UNLESS MOUNTING HEIGHTS HAVE BEEN SPECIFIED OTHERWISE ON THE DRAWINGS.



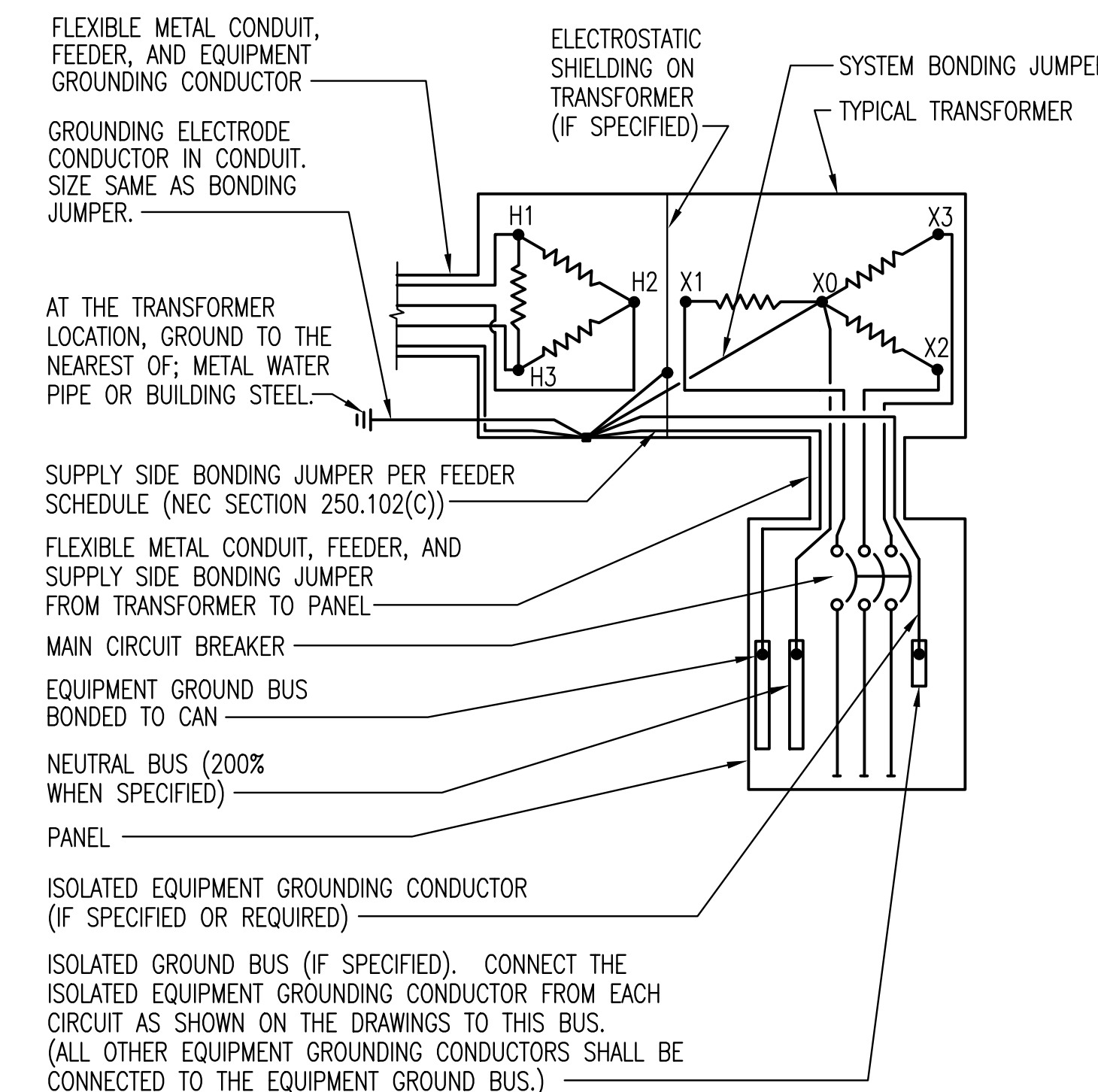
**GENERAL NOTES:**

1. MAINTAIN A MINIMUM CLEARANCE OF 305mm (12") ON ALL SIDES OF ROOF PENETRATION FROM WALLS, CURBS, AND OTHER PROJECTIONS TO FACILITATE PROPER FLASHING.
2. FLANGES OF ADJACENT FLASHINGS SHALL NOT BE CUT OR OVERLAPPED.
3. VERIFY ROOF & STRUCTURAL SYSTEM WITH ARCHITECT.
4. COORDINATE FLASHING INSTALLATION WITH ROOFING CONTRACTOR TO ENSURE PROPER METHODS & MATERIALS ARE USED TO MAINTAIN ROOF WARRANTY.

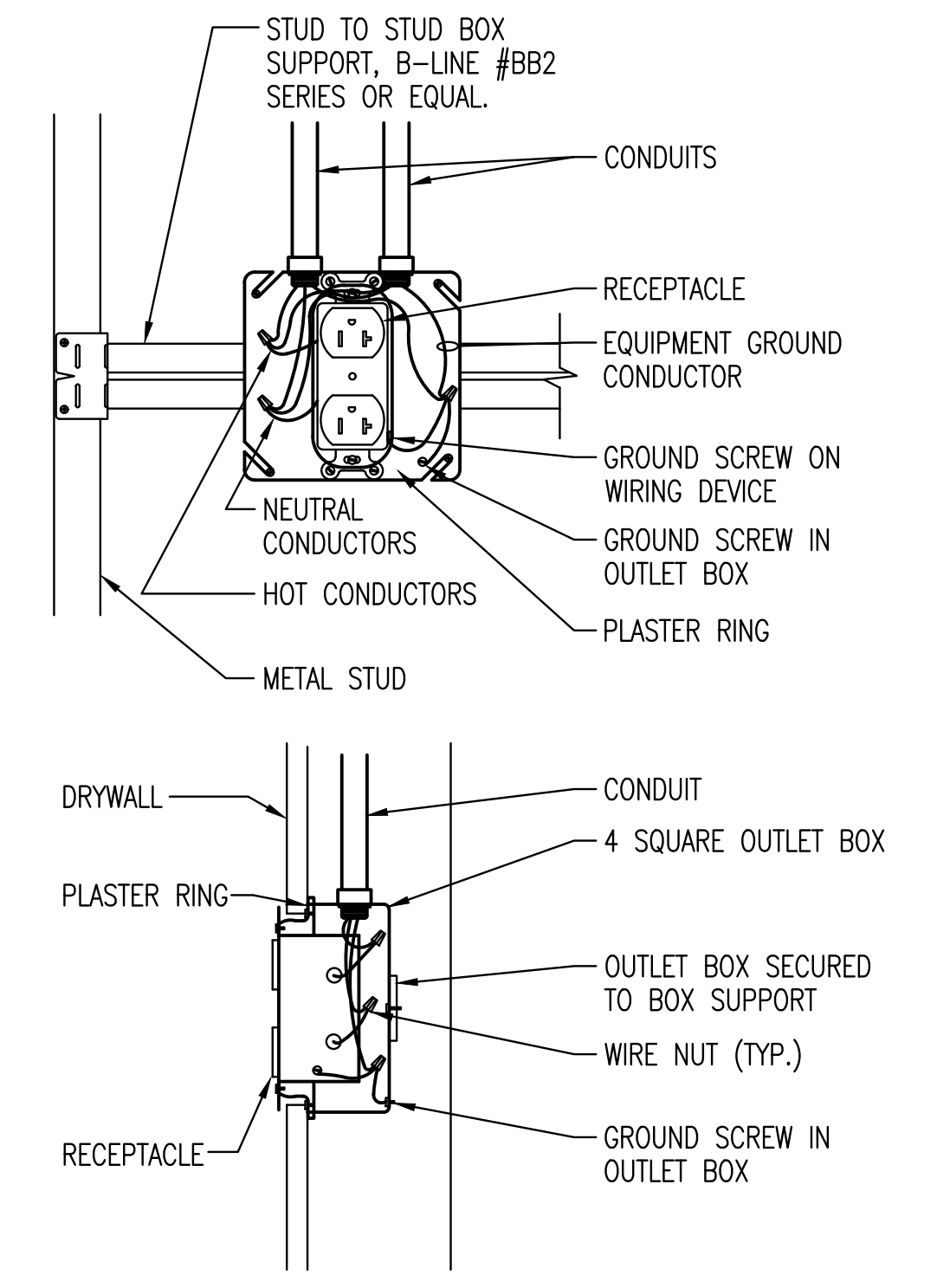
**4 CONDUIT ROOF PENETRATION DETAIL**  
NO SCALE



**3 TYPICAL NAME PLATES**  
NO SCALE



**2 TYPICAL TRANSFORMER GROUNDING DETAIL**  
NO SCALE  
NOTE: WHERE METAL WATER PIPING OR BUILDING STEEL IS UNAVAILABLE, GROUND TO ANY OF THE OTHER ELECTRODES IDENTIFIED IN NEC SECTION 250.52(A).



**1 TYPICAL RECEPTACLE MOUNTING DETAIL**  
NO SCALE

**Addendum 1**  
Revisions

5/xx/17  
Date

**Mechanical Consultants Inc.**  
254 LAURA SUITE 200 WICHITA, KANSAS 67211  
(316) 265-5301 FAX 265-8413 engrsm@mciks.com

**Professional Engineering Consultants, P.A.**  
616 VERMONT STREET, SUITE B • LAWRENCE, KANSAS 66044  
785-842-6464 • FAX 785-842-4140

**SERVICE INDEX LEGEND**  
DIR: OFFICE OF THE DIRECTOR  
ES: ENGINEERING SERVICE  
EM: ENVIRONMENTAL MANAGEMENT  
FM: FINANCIAL MANAGEMENT  
CS: CLINICAL SUPPORT  
BH: BEHAVIORAL HEALTH  
MS: MEDICINE SERVICE  
NS: NURSING SERVICE  
SWS: SOCIAL WORK SERVICE  
OI&T: OFFICE OF INFORMATION & TECHNOLOGY

**VA EASTERN KANSAS HEALTH CARE SYSTEM**

Dwight D. Eisenhower VA Medical Center, Leavenworth  
Colmery-O'Neil VA Medical Center, Topeka

Drawing Title: **ELECTRICAL DETAILS**

Scale: **NONE**

Approved:

Project Title: **UPGRADE PBX/COMPUTER ROOM AIR CONDITIONING & CONNECT TO EMERGENCY POWER**

Building Number: **88, 89, & 91**

Checked By: **DDC**

Drawn By: **JEM**

Location: **Dwight D. Eisenhower VA Medical Center 4101 S. 4th St. Trwy., Leavenworth, KS 66048**

**BID DOCUMENTS**

Date: **1/17/2017**

Project No: **589A6-16-201**

Drawing No: **88-ES501**

Dwg. of

Department of Veterans Affairs