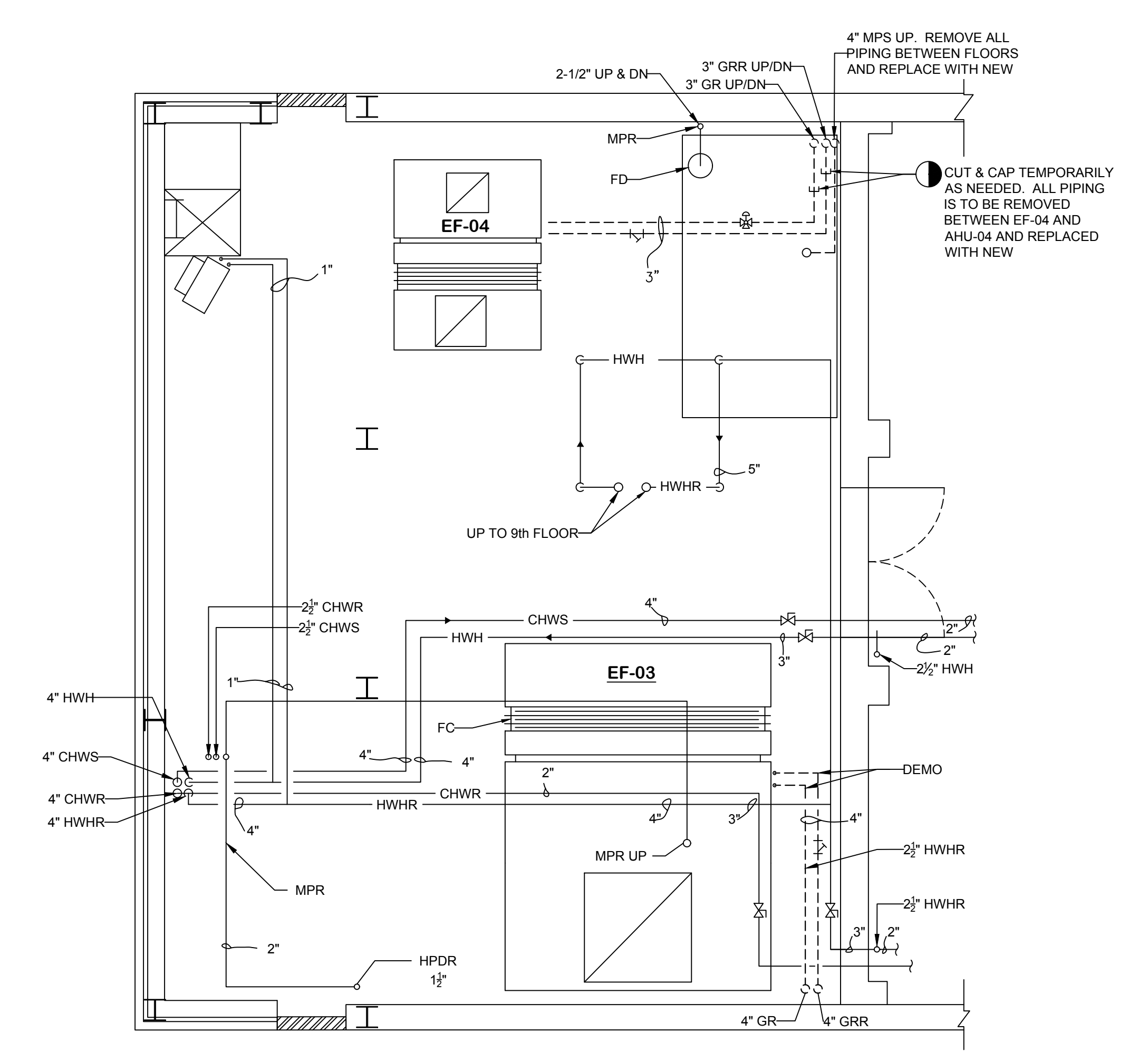


1 NINETH FLOOR - SHAFT #1, PIPING DEMOLITION
1/4" = 1' 0"



2 EIGHTH FLOOR - SHAFT #1, HVAC EXIST.
1/4" = 1' 0"

NOTES: UNLESS OTHERWISE SPECIFIED

1. TURN OVER TO VA CONTROL VALVES AND ELECTRIC ACTUATORS.
2. DEMO HX-03, HCP-03, C-03, HRP-03 AND HIGHLIGHTED PIPING TO NEAREST SHUT-OFF.
3. DEMO PRV-101 AND TURN OVER TO VA.
4. APPROXIMATE POINT OF CONNECTION FOR TEMPORARY UNIT (TE-03) CHILLED WATER AND HOT WATER CONNECTIONS. INCLUDE SHUTOFF VALVES.

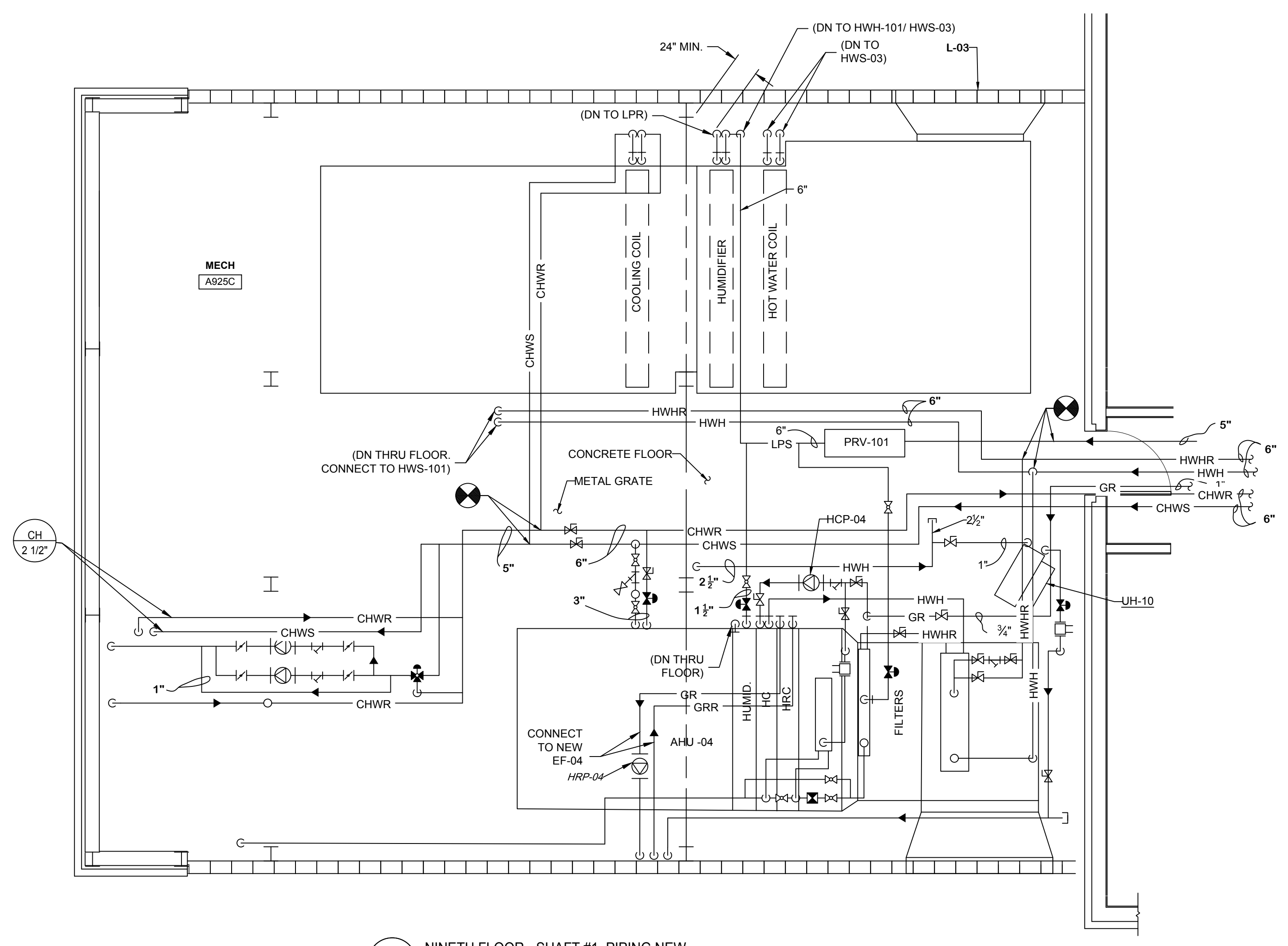
SYMBOLS:

----- PIPING TO BE REMOVED

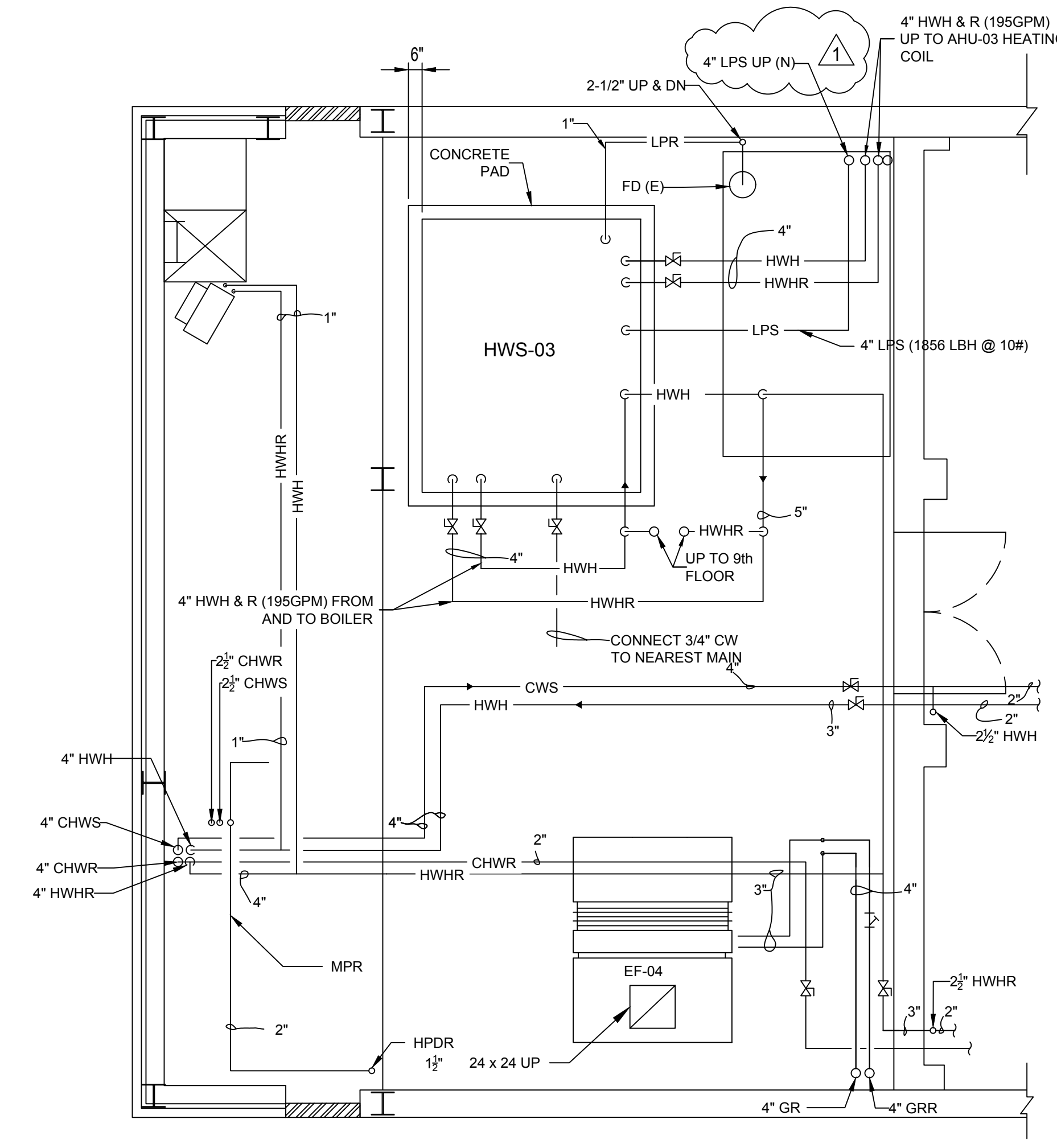
Drawing Title MECHANICAL PIPING DEMOLITION PLAN SHAFT #1		Project Title REPLACE AIR HANDLING UNITS		Project Number S28A7-17-707		SYRACUSE VA MEDICAL CENTER ENGINEERING DEPARTMENT
Approved: Project Director		Location 800 IRVING AVE SYRACUSE NY		Building Number 001		
Date 03/10/2017		Checked KN		Drawn ALB		Drawing Number MD-103 Dwg. of
Revisions: ADDED TE-03 PIPING CONNECTION POINTS 5-17-17		Date		Date		

three eighths inch = one foot
 one half inch = one foot
 one inch = one foot
 one quarter inch = one foot
 one eighth inch = one foot
 one sixteenth inch = one foot

three eighths inch = one foot
 one and one half inches = one foot
 one inch = one foot
 three quarters inch = one foot
 one half inch = one foot
 three eighths inch = one foot
 one quarter inch = one foot
 one eighth inch = one foot



1 NINTH FLOOR - SHAFT #1, PIPING NEW
 1/4" = 1' 0"



2 EIGHTH FLOOR - SHAFT #1, PIPING NEW
 1/4" = 1' 0"

Revisions: CHANGED LOCATION OF LPS RISER 5-17-17 Date	Drawing Title MECHANICAL PIPING PLAN SHAFT 1	Project Title REPLACE AIR HANDLING UNITS	Project Number S28A7-17-707	SYRACUSE VA MEDICAL CENTER ENGINEERING DEPARTMENT Department of Veterans Affairs		
	Approved: Project Director	Location 800 IRVING AVE SYRACUSE NY	Building Number 001			
		Date 03/10/2017	Checked KN	Drawn ALB	Drawing Number MP-101	Dwg. of