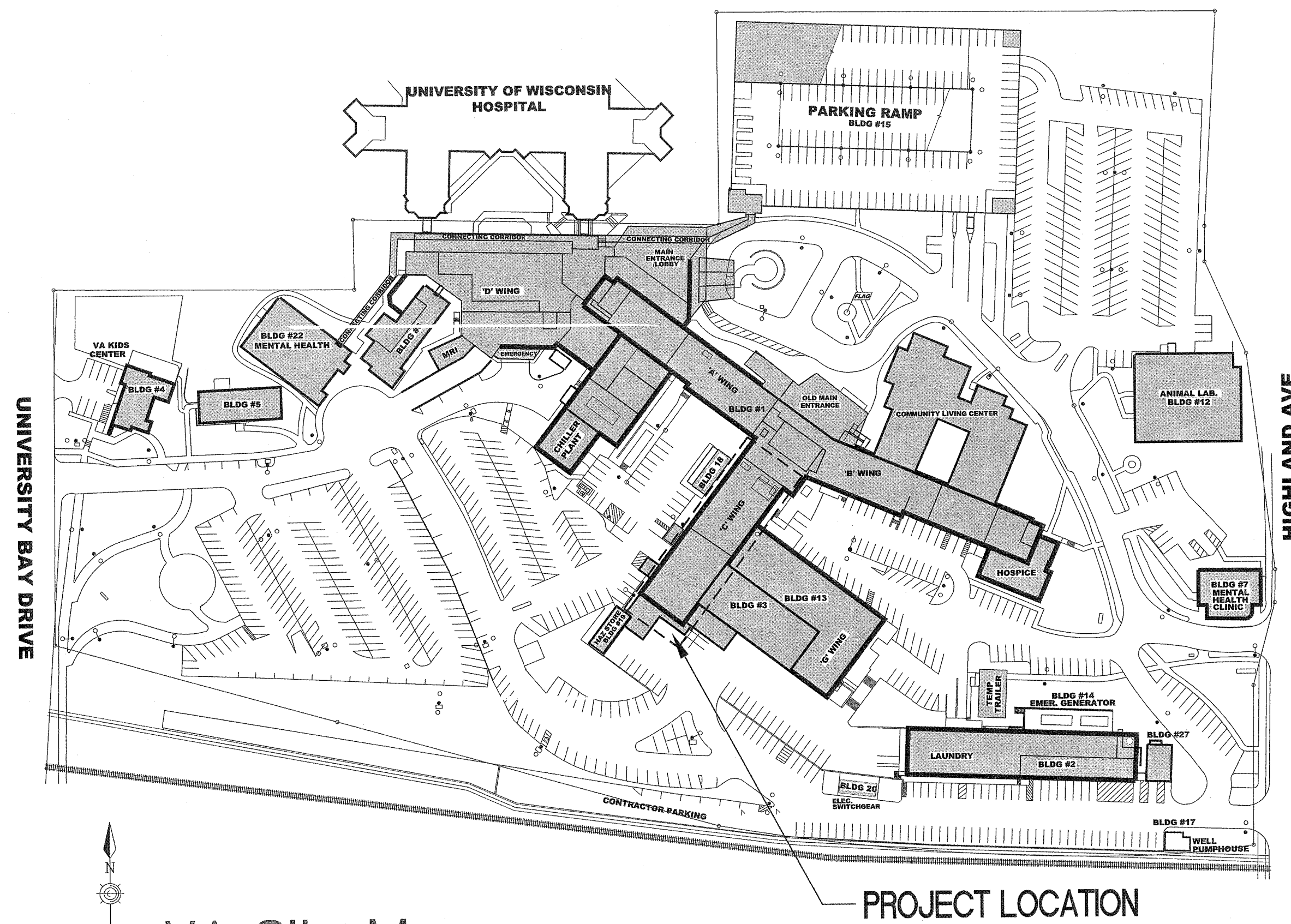


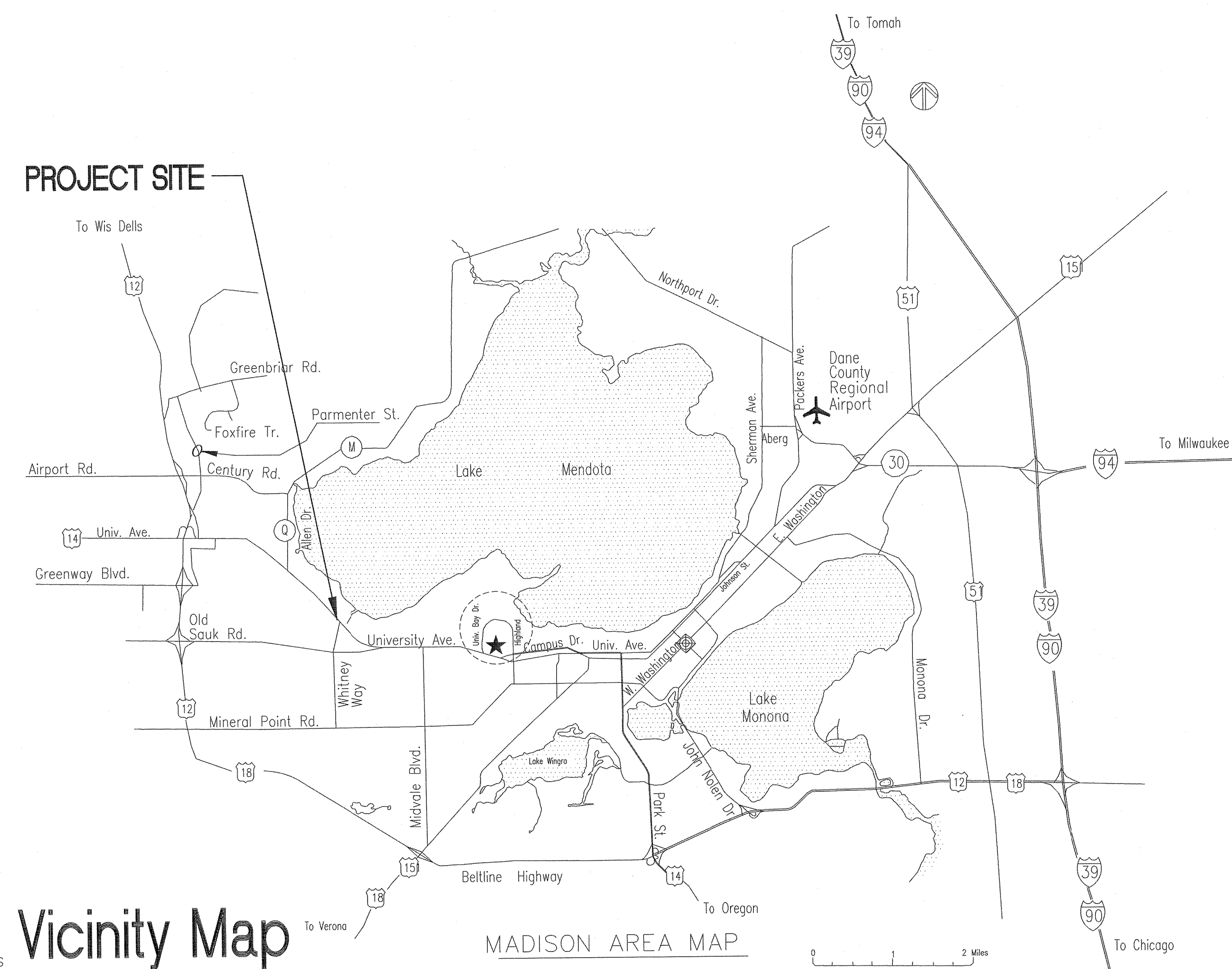
DEPARTMENT OF VETERANS AFFAIRS

WILLIAM S. MIDDLETON MEMORIAL VETERANS HOSPITAL 2500 OVERLOOK TERRACE MADISON, WISCONSIN 53705
RENOVATE FOOD PRODUCTION ON 2C

VA PROJECT NUMBER 607-16-131
NAGEL PROJECT NUMBER 151101



VA Site Map



Vicinity Map

ARCHITECTURAL SYMBOLS

	CENTER LINE		DETAIL INDICATOR
	ELEVATION INDICATOR		DETAIL INDICATOR
	CENTER LINE INDICATOR		DETAIL INDICATOR FOR SMALL CONDITIONS
	CONTRACT LIMIT LINE		DIMENSION LINE
	DEMOLITION LINE		DOOR OPENING/BORROWED LIGHT IDENTIFIER
	EXISTING TO REMAIN LINE		DRAWING BLOCK TITLE, TYPICAL
	FEATURES ABOVE LINE INDICATOR		ELEVATION INDICATOR, EXTERIOR
	FIRE RESISTIVE RATED LINE, 1 HOUR		ELEVATION INDICATOR, INTERIOR, MULTIPLE VIEW
	FIRE RESISTIVE RATED LINE, 2 HOUR		ELEVATION INDICATOR, INTERIOR, SINGLE VIEW
	FIRE RESISTIVE RATED LINE, 3 HOUR		BUILDING SECTION INDICATOR
	FIRE RESISTIVE RATED LINE, 4 HOUR		GRAPHIC SCALE
	FIRE-RATED, SMOKE BARRIER LINE, 1 HOUR		DETAIL INDICATOR
	FIRE-RATED, SMOKE BARRIER LINE, 2 HOUR		FURNITURE, FIXTURE, & EQUIPMENT INDICATOR
	FIRE-RATED, SMOKE BARRIER LINE, 3 HOUR		GRAPHIC SCALE, 1/8"=1'-0"
	FIRE-RATED, SMOKE BARRIER LINE, 4 HOUR		ROOM NAME AND NUMBER
	HIDDEN FEATURES LINE		FIRE EXTINGUISHER CABINET
	NEW LINE		CORNER GUARD
	PROPERTY LINE		V.V. ITEM - VA SUPPLIED & INSTALLED
	SMOKE BARRIER LINE		V.C. ITEM - VA SUPPLIED & CONTRACTOR INSTALLED
	BREAK, ROUND (USER DEFINES SIZE)		C.C. ITEM - CONTRACTOR SUPPLIED & INSTALLED
	BREAK, STRAIGHT (SEE SECTION INDICATORS, BUILDING, WITH BREAK STANDARDS)		
	COLUMN GRID		
	KEYNOTE		
	WALL OR PARTITION TYPE		
	NORTH ARROW		

MATERIALS LEGEND

	CONCRETE		EXISTING CONSTRUCTION TO REMAIN		RIGID INSULATION
	EARTH		EXISTING CONSTRUCTION TO BE REMOVED		BATT INSULATION
	BASE COURSE		NEW CONSTRUCTION		

SHEET INDEX		
DRAWING NUMBER	DRAWING TITLE	SHEET NUMBER
G1001	COVER SHEET	01
G1002	LIFE SAFETY PLAN - 2C	02
HA102	ASBESTOS ABATEMENT PLAN - 2C	03
A000	ARCHITECTURAL ABBREVIATIONS	04
AP102	PHASING PLAN - 2C	05
AD102	ARCHITECTURAL DEMOLITION PLAN - 2C	06
AD112	DEMOLITION REFLECTED CEILING PLAN - 2C	07
AS102	ARCHITECTURAL FLOOR PLAN - 2C	08
AS112	REFLECTED CEILING PLAN - 2C	09
AS122	SIGNAGE PLAN, SCHEDULE AND MISC. DETAILS - 2C	10
AS132	ARCHITECTURAL DIMENSION PLAN - 2C	11
AS501	WALL TYPES AND DETAILS	12
AS502	PENTHOUSE MISC. DETAILS - 5C	13
AS601	DOOR SCHEDULE AND DETAILS	14
AS602	ROOM FINISH SCHEDULE	15
AD102	ARCHITECTURAL EQUIPMENT PLAN - 2C	16
AD602	ARCHITECTURAL EQUIPMENT SCHEDULE - 2C	17
AZ01	ARCHITECTURAL INTERIOR ELEVATIONS - 2C	18
AZ02	ARCHITECTURAL INTERIOR ELEVATIONS - 2C	19
AZ03	ARCHITECTURAL CORRIDOR ELEVATIONS - 2C	20
FS100	FOOD SERVICE EQUIPMENT PLAN - OVERALL	21
FS200	PARTIAL FOOD SERVICE EQUIPMENT PLAN - 2C	22
FS201	PARTIAL FOOD SERVICE ELECTRICAL PLAN - 2C	23
FS202	PARTIAL FOOD SERVICE PLUMBING PLAN - 2C	24
FS203	PARTIAL FOOD SERVICE SPECIAL CONDITIONS PLAN - 2C	25
FS300	PARTIAL FOOD SERVICE EQUIPMENT PLAN - 2C	26
FS301	PARTIAL FOOD SERVICE ELECTRICAL PLAN - 2C	27
FS302	PARTIAL FOOD SERVICE PLUMBING PLAN - 2C	28
FS303	PARTIAL FOOD SERVICE SPECIAL CONDITIONS PLAN - 2C	29
FS400	PARTIAL FOOD SERVICE EQUIPMENT PLAN - 2C	30
FS401	PARTIAL FOOD SERVICE ELECTRICAL PLAN - 2C	31
FS402	PARTIAL FOOD SERVICE PLUMBING PLAN - 2C	32
FS403	PARTIAL FOOD SERVICE SPECIAL CONDITIONS PLAN - 2C	33
FS500	FOOD SERVICE EQUIPMENT ELEVATIONS - 2C	34
FS501	FOOD SERVICE EQUIPMENT ELEVATIONS - 2C	35
FS600	TEMPORARY KITCHEN - FOOD SERVICE EQUIPMENT PLAN	36
FS601	TEMPORARY KITCHEN - FOOD SERVICE ELECTRICAL PLAN	37
FS602	TEMPORARY KITCHEN - FOOD SERVICE PLUMBING PLAN	38
FS603	TEMPORARY KITCHEN - FOOD SERVICE CONDITIONS PLAN	39
FS604	TEMPORARY KITCHEN - FOOD SERVICE ELEVATIONS	40
S001	GENERAL NOTES	41
S100	PENTHOUSE ROOF AHU PLATFORM FRAMING PLAN	42
S101	THIRD FLOOR FRAMING PLAN - B WING	43
FP000	FIRE PROTECTION SYMBOLS AND ABBREVIATIONS	44
FP102	FIRE PROTECTION FLOOR PLAN - 2C	45
M000	MECHANICAL LEGEND	46
MD100	FIRST FLOOR MECHANICAL STEAM PIPING DEMOLITION PLAN	47
MD101	SECOND FLOOR MECHANICAL DUCTWORK DEMOLITION PLAN	48
MD102	SECOND FLOOR MECHANICAL PIPING DEMOLITION PLAN	49
MH100	FIRST FLOOR MECHANICAL NEW STEAM PIPING PLAN	50
MH101	SECOND FLOOR MECHANICAL NEW DUCTWORK PLAN	51
MH102	SECOND FLOOR MECHANICAL NEW PIPING PLAN	52
MH103	PARTIAL MECHANICAL WORK FLOOR PLANS - 8B, 9B PENTHOUSE	53
MM400	PARTIAL MECHANICAL ENLARGED 5C PENTHOUSE PLAN	54
MM401	5C PENTHOUSE MECHANICAL SECTIONS	55
MM402	TEMPORARY KITCHEN MECHANICAL PLANS	56
MM500	MECHANICAL DETAILS	57
MM501	MECHANICAL DETAILS	58
MM600	MECHANICAL SCHEDULES	59
MM700	TEMPERATURE CONTROLS - PROVIDED BY VA	60
MM701	TEMPERATURE CONTROLS - PROVIDED BY VA	61
MM702	TEMPERATURE CONTROLS - PROVIDED BY VA	62
P000	PLUMBING SYMBOLS AND ABBREVIATIONS	63
P100	PLUMBING FLOOR PLANS - BASEMENT FLOOR C-WING	64
P101	PLUMBING FLOOR PLANS - FIRST FLOOR C-WING	65
P102	PLUMBING FLOOR PLANS - SECOND FLOOR C-WING	66
P400	ENLARGED PLUMBING FLOOR PLANS - SECOND FLOOR C-WING	67
P401	ENLARGED PLUMBING FLOOR PLANS - SECOND FLOOR C-WING	68
P402	ENLARGED PLUMBING FLOOR PLANS - SECOND FLOOR C-WING	69
P403	ENLARGED PLUMBING FLOOR PLANS - SECOND FLOOR B-WING	70
PS00	PLUMBING ISOMETRICS	71
E000	ELECTRICAL SYMBOLS, ABBREVIATIONS & SHEET INDEX	72
E100	PARTIAL BASEMENT FLOOR PLAN - AREA C	73
ED202C	SECOND FLOOR PLAN - DEMOLITION	74
E202B	TEMP KITCHEN-POWER/FIRE ALARM AND LIGHTING	75
E202C	SECOND FLOOR-POWER/FIRE ALARM AND LIGHTING	76
E203	PARTIAL FIFTH FLOOR PLAN - AREA C-ELECTRICAL	77
E204	8TH & 9TH PARTIAL FLOOR PLANS - ELECTRICAL	78
E205	ROOF PLAN AREA G - ELECTRICAL	79
E400	ONE-LINE DIAGRAM SYMBOLS	80
E401	ONE-LINE DIAGRAM - ABC WING NORMAL	81
E402	ONE-LINE DIAGRAM - ABC WING LIFE SAFETY	82
E403	ONE-LINE DIAGRAM - ABC WING EQUIPMENT	83
E500	LIGHTING DETAILS	84
E501	LIGHTING DETAILS	85
E510	POWER DETAILS	86
E600	LIGHTING SCHEDULES	87
E610	POWER SCHEDULES	88
E611	POWER SCHEDULES	89
E612	POWER SCHEDULES	90
E613	POWER SCHEDULES	91
E614	TEMP KITCHEN SCHEDULES	92
E615	TEMP KITCHEN SCHEDULES	93
T000	TECHNOLOGY SYMBOLS, ABBREVIATIONS AND SHEET INDEX	94
T002B	SECOND FLOOR PLAN - TEMP KITCHEN -TECHNOLOGY	95
T020C	TECHNOLOGY FLOOR PLAN - 2C	96
T203	PARTIAL FIFTH FLOOR PLAN AREA C-TECHNOLOGY	97
T500	TECHNOLOGY DETAILS	98
T501	TECHNOLOGY DETAILS	99

100% CONSTRUCTION DOCUMENTS

CONSULTANTS: Ring & DuChateau, LLP 17400 W. Capitol Drive Brookfield, WI 53045 GRAEF 5126 W. Terrace Drive Suite 111 Madison, WI 53718 Date		Environmental Management Consulting, Inc. W7748 County Highway V Lake Mills, WI 53551 The Concord Group 55 E. Monroe Street Suite 2850 Chicago, IL 60603 attitude makes the positive difference. Boelter 4200 N. Port Washington Road Glendale, WI 53122 Phone - 414.967.4200		ARCHITECT/ENGINEERS: 13100 Watertown Plank Road Suite 200 elm grove, WI 53122 nagel architects Nagel Architects Project Number: 151101		Drawing Title COVER SHEET Approved Project Director -		Project Title RENOVATE FOOD PRODUCTION ON 2C Location William S. Middleton Memorial VA, Madison WI Date 05/05/2017 Checked GN Drawn RFG		Project Number 607-16-131 Building Number Bldg 1 2nd Floor C-Wing Drawing Number G1001 Dwg. 01 of 99		Office of Construction and Facilities Management Department of Veterans Affairs	
--	--	---	--	--	--	--	--	---	--	--	--	---	--

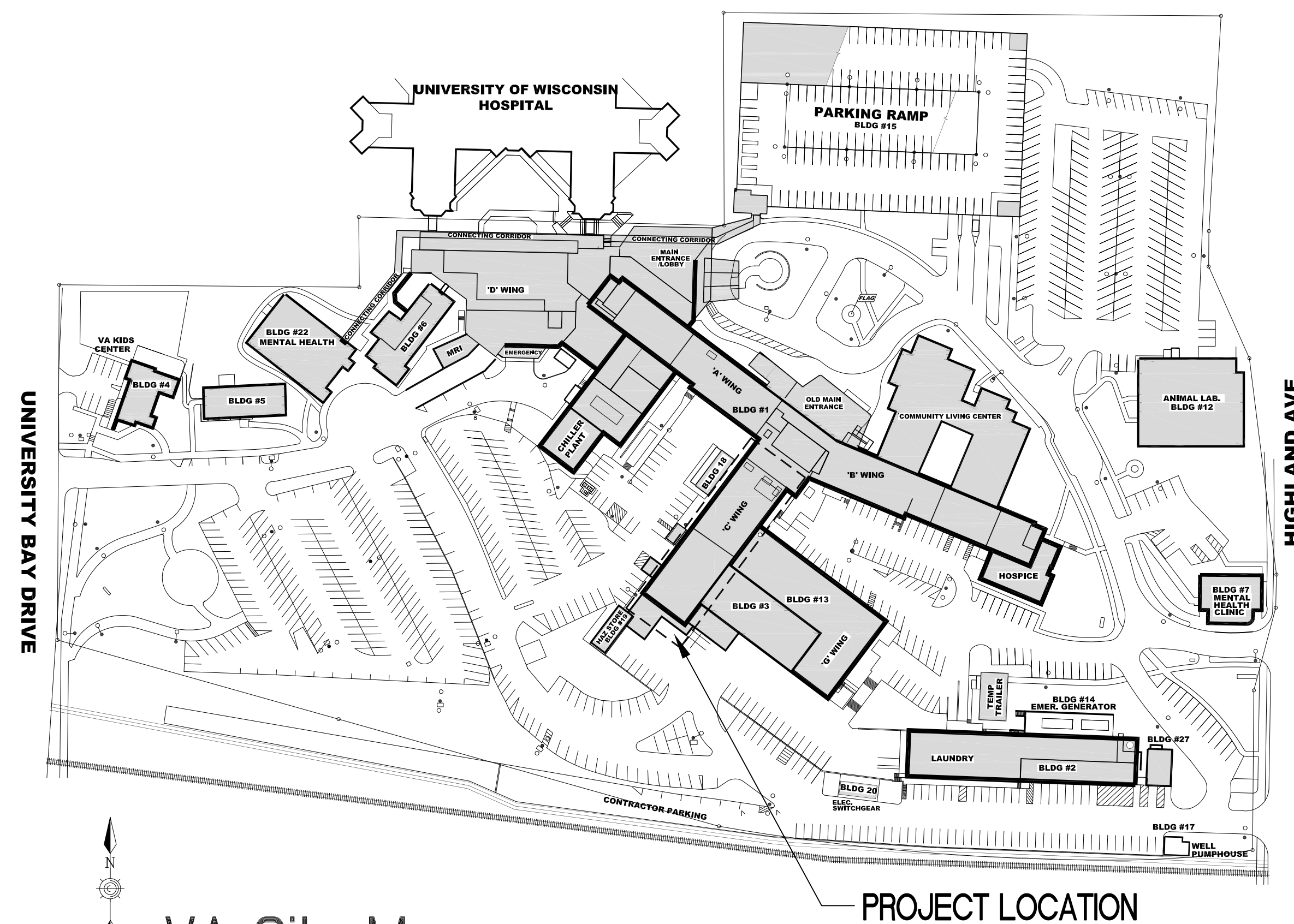


DEPARTMENT OF VETERANS AFFAIRS

WILLIAM S. MIDDLETON MEMORIAL VETERANS HOSPITAL 2500 OVERLOOK TERRACE MADISON, WISCONSIN 53705

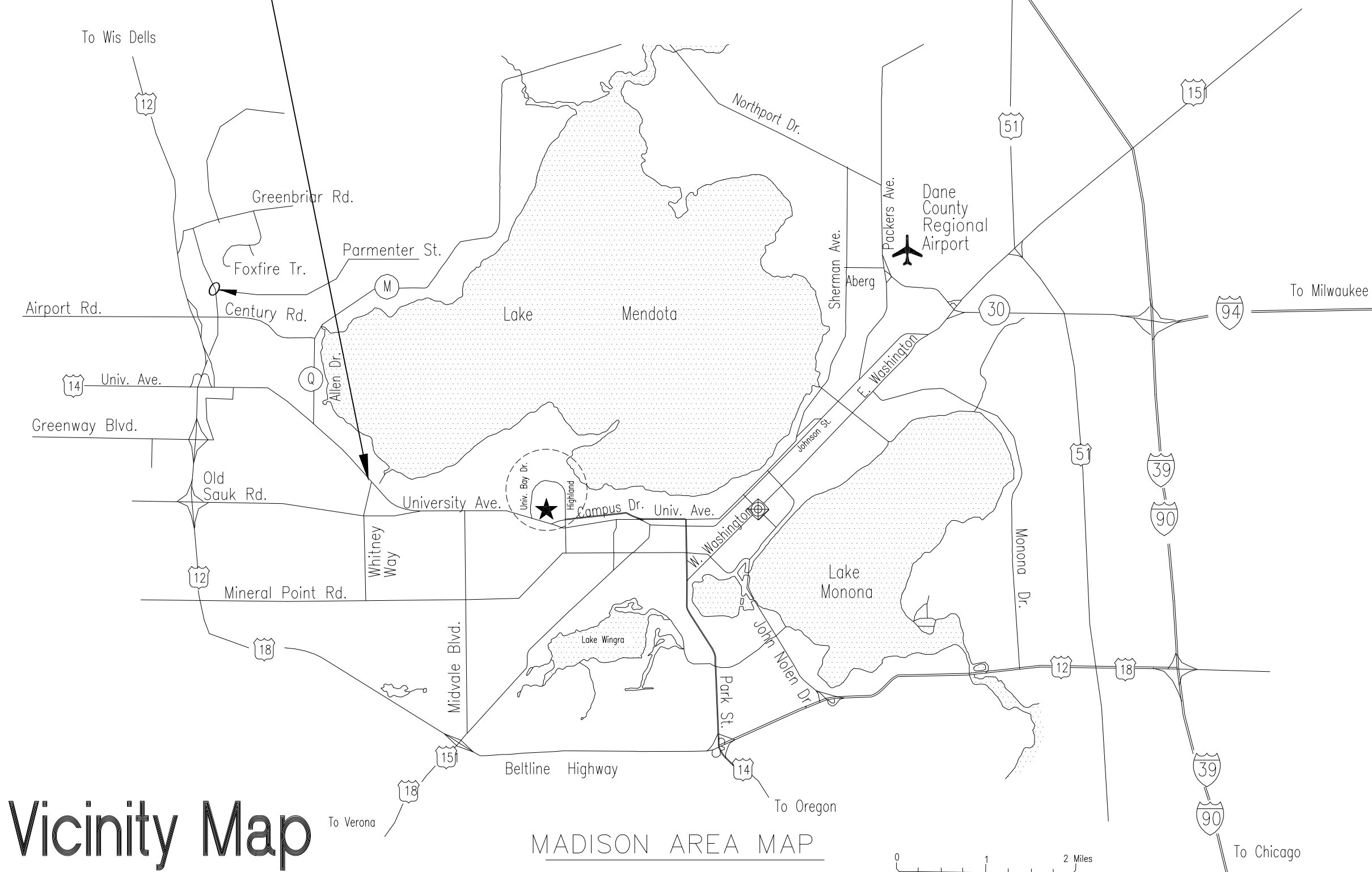
RENOVATE FOOD PRODUCTION ON 2C

VA PROJECT NUMBER 607-16-131
NAGEL PROJECT NUMBER 151101



VA Site Map

PROJECT SITE



Vicinity Map

ARCHITECTURAL SYMBOLS

	CENTER LINE		DETAIL INDICATOR
	ELEVATION INDICATOR		DETAIL INDICATOR
	CENTER LINE INDICATOR		DETAIL INDICATOR FOR SMALL CONDITIONS
	CONTRACT LIMIT LINE		DIMENSION LINE
	DEMOLITION LINE		DOOR OPENING/BORROWED LIGHT IDENTIFIER
	EXISTING TO REMAIN LINE		DRAWING BLOCK TITLE, TYPICAL
	FEATURES ABOVE LINE INDICATOR		ELEVATION INDICATOR, EXTERIOR
	FIRE RESISTIVE RATED LINE, 1 HOUR		ELEVATION INDICATOR, INTERIOR, MULTIPLE VIEW
	FIRE RESISTIVE RATED LINE, 2 HOUR		ELEVATION INDICATOR, INTERIOR, SINGLE VIEW
	FIRE RESISTIVE RATED LINE, 3 HOUR		BUILDING SECTION INDICATOR
	FIRE RESISTIVE RATED LINE, 4 HOUR		GRAPHIC SCALE
	FIRE-RATED, SMOKE BARRIER LINE, 1 HOUR		DETAIL INDICATOR
	FIRE-RATED, SMOKE BARRIER LINE, 2 HOUR		FURNITURE, FIXTURE, & EQUIPMENT INDICATOR
	FIRE-RATED, SMOKE BARRIER LINE, 3 HOUR		GRAPHIC SCALE, 1/8"=1'-0"
	FIRE-RATED, SMOKE BARRIER LINE, 4 HOUR		ROOM NAME AND NUMBER
	HIDDEN FEATURES LINE		FIRE EXTINGUISHER CABINET
	NEW LINE		CORNER GUARD
	PROPERTY LINE		V V ITEM - VA SUPPLIED & INSTALLED
	SMOKE BARRIER LINE		VC ITEM - VA SUPPLIED & CONTRACTOR INSTALLED
	BREAK, ROUND (USER DEFINES SIZE)		CC ITEM - CONTRACTOR SUPPLIED & INSTALLED
	BREAK, STRAIGHT (SEE SECTION INDICATORS, BUILDING, WITH BREAK STANDARDS)		
	COLUMN GRID		
	KEYNOTE		
	WALL OR PARTITION TYPE		
	NORTH ARROW		

MATERIALS LEGEND

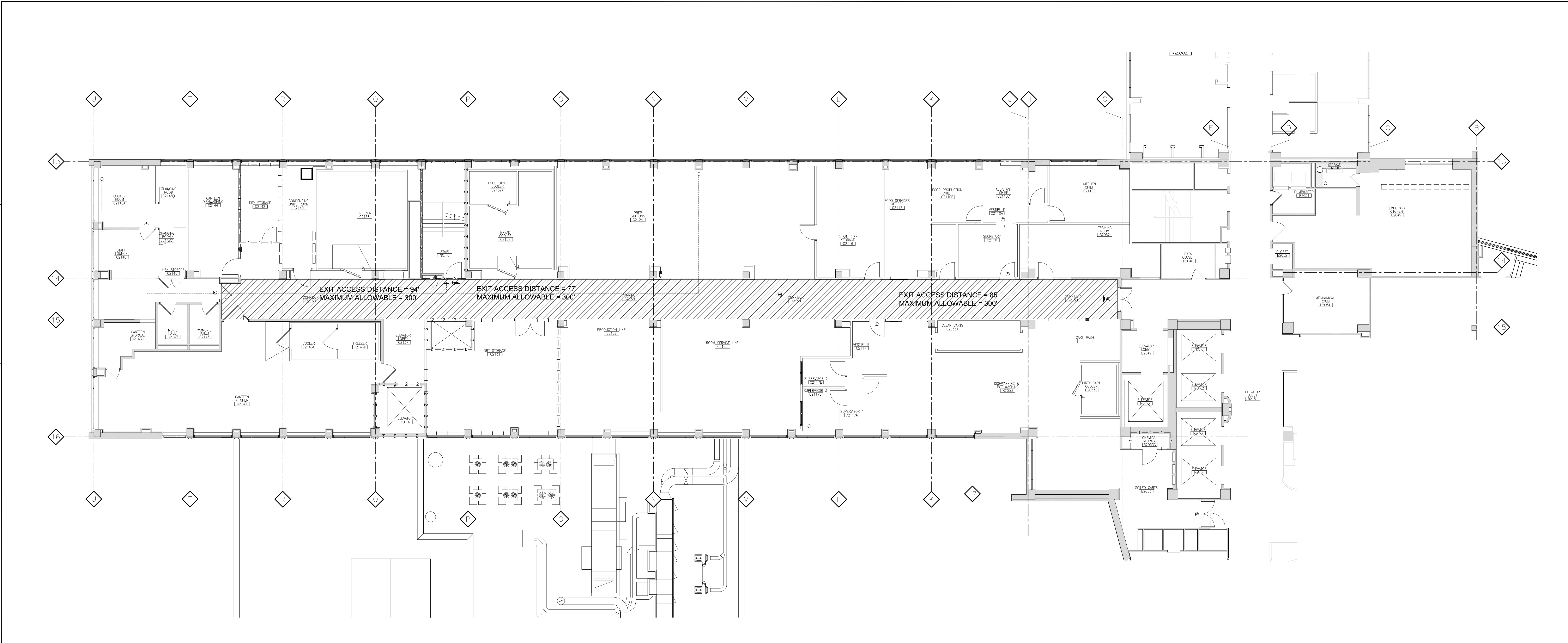
	CONCRETE		EXISTING CONSTRUCTION TO REMAIN		RIGID INSULATION
	EARTH		EXISTING CONSTRUCTION TO BE REMOVED		BATT INSULATION
	BASE COURSE		NEW CONSTRUCTION		

SHEET INDEX		
DRAWING NUMBER	DRAWING TITLE	SHEET NUMBER
G001	COVER SHEET	01
G102	LIFE SAFETY PLAN - 2C	02
ASBESTOS ABATEMENT		
HA102	ASBESTOS ABATEMENT PLAN - 2C	03
ARCHITECTURAL		
A000	ARCHITECTURAL ABBREVIATIONS	04
AP102	PHASING PLAN - 2C	05
AD102	ARCHITECTURAL DEMOLITION PLAN - 2C	06
AD112	DEMOLITION REFLECTED CEILING PLAN - 2C	07
AS102	ARCHITECTURAL FLOOR PLAN - 2C	08
AS112	REFLECTED CEILING PLAN - 2C	09
AS122	SIGNAGE PLAN, SCHEDULE AND MISC. DETAILS - 2C	10
AS132	ARCHITECTURAL DIMENSION PLAN - 2C	11
AS501	WALL TYPES AND DETAILS	12
AS502	PENTHOUSE MISC. DETAILS - 5C	13
AS601	DOOR SCHEDULE AND DETAILS	14
AS602	ROOM FINISH SCHEDULE	15
A0102	ARCHITECTURAL EQUIPMENT PLAN - 2C	16
A0602	ARCHITECTURAL EQUIPMENT SCHEDULE - 2C	17
A101	ARCHITECTURAL INTERIOR ELEVATIONS - 2C	18
A102	ARCHITECTURAL INTERIOR ELEVATIONS - 2C	19
A103	ARCHITECTURAL CORRIDOR ELEVATIONS - 2C	20
FOOD SERVICE EQUIPMENT		
FS100	FOOD SERVICE EQUIPMENT PLAN - OVERALL	21
FS200	PARTIAL FOOD SERVICE EQUIPMENT PLAN - 2C	22
FS201	PARTIAL FOOD SERVICE ELECTRICAL PLAN - 2C	23
FS202	PARTIAL FOOD SERVICE PLUMBING PLAN - 2C	24
FS203	PARTIAL FOOD SERVICE SPECIAL CONDITIONS PLAN - 2C	25
FS300	PARTIAL FOOD SERVICE EQUIPMENT PLAN - 2C	26
FS301	PARTIAL FOOD SERVICE ELECTRICAL PLAN - 2C	27
FS302	PARTIAL FOOD SERVICE PLUMBING PLAN - 2C	28
FS303	PARTIAL FOOD SERVICE SPECIAL CONDITIONS PLAN - 2C	29
FS400	PARTIAL FOOD SERVICE EQUIPMENT PLAN - 2C	30
FS401	PARTIAL FOOD SERVICE ELECTRICAL PLAN - 2C	31
FS402	PARTIAL FOOD SERVICE PLUMBING PLAN - 2C	32
FS403	PARTIAL FOOD SERVICE SPECIAL CONDITIONS PLAN - 2C	33
FS500	FOOD SERVICE EQUIPMENT ELEVATIONS - 2C	34
FS501	FOOD SERVICE EQUIPMENT ELEVATIONS - 2C	35
FS600	TEMPORARY KITCHEN - FOOD SERVICE EQUIPMENT PLAN	36
FS601	TEMPORARY KITCHEN - FOOD SERVICE ELECTRICAL PLAN	37
FS602	TEMPORARY KITCHEN - FOOD SERVICE PLUMBING PLAN	38
FS603	TEMPORARY KITCHEN - FOOD SERVICE CONDITIONS PLAN	39
FS604	TEMPORARY KITCHEN - FOOD SERVICE ELEVATIONS	40
STRUCTURAL		
S001	GENERAL NOTES	41
S100	PENTHOUSE ROOF RAU PLATFORM FRAMING PLAN	42
S101	THRD FLOOR FRAMING PLAN - B WING	43
FIRE PROTECTION		
FP000	FIRE PROTECTION SYMBOLS AND ABBREVIATIONS	44
FP102	FIRE PROTECTION FLOOR PLAN - 2C	45
MECHANICAL		
M000	MECHANICAL LEGEND	46
M0100	FIRST FLOOR MECHANICAL STEAM PIPING DEMOLITION PLAN	47
M0101	SECOND FLOOR MECHANICAL DUCTWORK DEMOLITION PLAN	48
M0102	SECOND FLOOR MECHANICAL PIPING DEMOLITION PLAN	49
MH100	FIRST FLOOR MECHANICAL NEW STEAM PIPING PLAN	50
MH101	SECOND FLOOR MECHANICAL NEW DUCTWORK PLAN	51
MH102	SECOND FLOOR MECHANICAL NEW PIPING PLAN	52
MH103	PARTIAL MECHANICAL WORK FLOOR PLANS - 8B, 9B PENTHOUSE	53
MM400	PARTIAL MECHANICAL ENLARGED 5C PENTHOUSE PLAN	54
MM401	5C PENTHOUSE MECHANICAL SECTIONS	55
MM402	TEMPORARY KITCHEN MECHANICAL PLANS	56
MM500	MECHANICAL DETAILS	57
MM501	MECHANICAL DETAILS	58
MM600	MECHANICAL SCHEDULES	59
MM700	TEMPERATURE CONTROLS - PROVIDED BY VA	60
MM701	TEMPERATURE CONTROLS - PROVIDED BY VA	61
MM702	TEMPERATURE CONTROLS - PROVIDED BY VA	62
PLUMBING		
P000	PLUMBING SYMBOLS AND ABBREVIATIONS	63
P100	PLUMBING FLOOR PLANS - BASEMENT FLOOR C-WING	64
P101	PLUMBING FLOOR PLANS - FIRST FLOOR C-WING	65
P102	PLUMBING FLOOR PLANS - SECOND FLOOR C-WING	66
P400	ENLARGED PLUMBING FLOOR PLANS - SECOND FLOOR C-WING	67
P401	ENLARGED PLUMBING FLOOR PLANS - SECOND FLOOR C-WING	68
P402	ENLARGED PLUMBING FLOOR PLANS - SECOND FLOOR C-WING	69
P403	ENLARGED PLUMBING FLOOR PLANS - SECOND FLOOR B-WING	70
P500	PLUMBING ISOMETRICS	71
ELECTRICAL		
E000	ELECTRICAL SYMBOLS, ABBREVIATIONS & SHEET INDEX	72
E100	PARTIAL BASEMENT FLOOR PLAN - AREA C	73
ED202C	SECOND FLOOR PLAN - DEMOLITION	74
E202B	TEMP KITCHEN-POWER/FIRE ALARM AND LIGHTING	75
E202C	SECOND FLOOR-POWER/FIRE ALARM AND LIGHTING	76
E203	PARTIAL FIFTH FLOOR PLAN - AREA C-ELECTRICAL	77
E204	8TH & 9TH PARTIAL FLOOR PLANS - ELECTRICAL	78
E205	ROOF PLAN AREA C - ELECTRICAL	79
E400	ONE-LINE DIAGRAM SYMBOLS	80
E401	ONE-LINE DIAGRAM - ABC WING NORMAL	81
E402	ONE-LINE DIAGRAM - ABC WING LIFE SAFETY	82
E403	ONE-LINE DIAGRAM - ABC WING EQUIPMENT	83
E500	LIGHTING DETAILS	84
E501	LIGHTING DETAILS	85
E510	POWER DETAILS	86
E600	LIGHTING SCHEDULES	87
E610	POWER SCHEDULES	88
E611	POWER SCHEDULES	89
E612	POWER SCHEDULES	90
E613	POWER SCHEDULES	91
E614	TEMP KITCHEN SCHEDULES	92
E615	TEMP KITCHEN SCHEDULES	93
TECHNOLOGY		
T000	TECHNOLOGY SYMBOLS, ABBREVIATIONS AND SHEET INDEX	94
T202B	SECOND FLOOR PLAN - TEMP KITCHEN -TECHNOLOGY	95
T202C	TECHNOLOGY FLOOR PLAN - 2C	96
T203	PARTIAL FIFTH FLOOR PLAN AREA C-TECHNOLOGY	97
T500	TECHNOLOGY DETAILS	98
T501	TECHNOLOGY DETAILS	99

100% CONSTRUCTION DOCUMENTS

<div>Revisions</div>		CONSULTANTS: <div>Ring & DuChateau, LLP 17400 W. Capitol Drive Brookfield, WI 53045</div> <div>Environmental Management Consulting, Inc. W7748 County Highway V Lake Mills, WI 53551</div> <div>Boelter attitude makes the positive difference. 4200 N. Port Washington Road Glendale, WI 53122 Phone - 414.967.4200</div>		ARCHITECT/ENGINEERS: <div>13100 watertown plank road suite 200 elm grove, wi 53122</div> <div>nagel architects Nagel Architects Project Number: 151101</div>		Drawing Title COVER SHEET		Project Title RENOVATE FOOD PRODUCTION ON 2C		Project Number 607-16-131		Building Number Bldg 1 2nd Floor C-Wing		Office of Construction and Facilities Management Department of Veterans Affairs	
<div>Approved Project Director</div>		<div>Location William S. Middleton Memorial VA, Madison WI</div>		<div>Date 05/05/2017</div>		<div>Checked GN</div>		<div>Drawn RFG</div>		<div>Drawing Number G1001</div>		<div>Dwg. 01 of 99</div>			

three inches = one foot
one and one half inches = one foot
one inch = one foot
three quarters inch = one foot
one half inch = one foot
three eighths inch = one foot
one quarter inch = one foot
one eighth inch = one foot

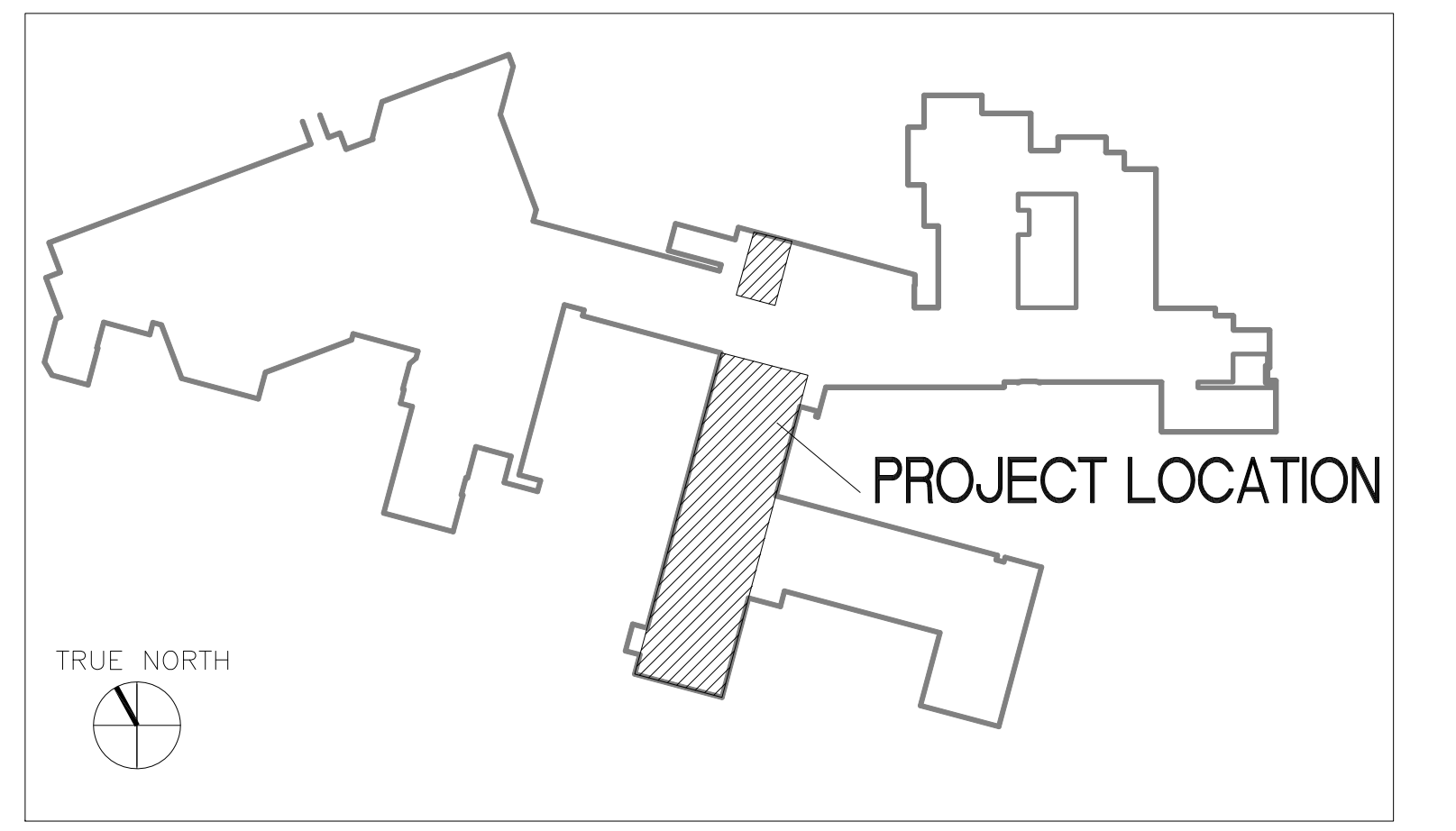


A1 LIFE SAFETY PLAN - 2C
1/8" = 1'-0"

PLAN NORTH

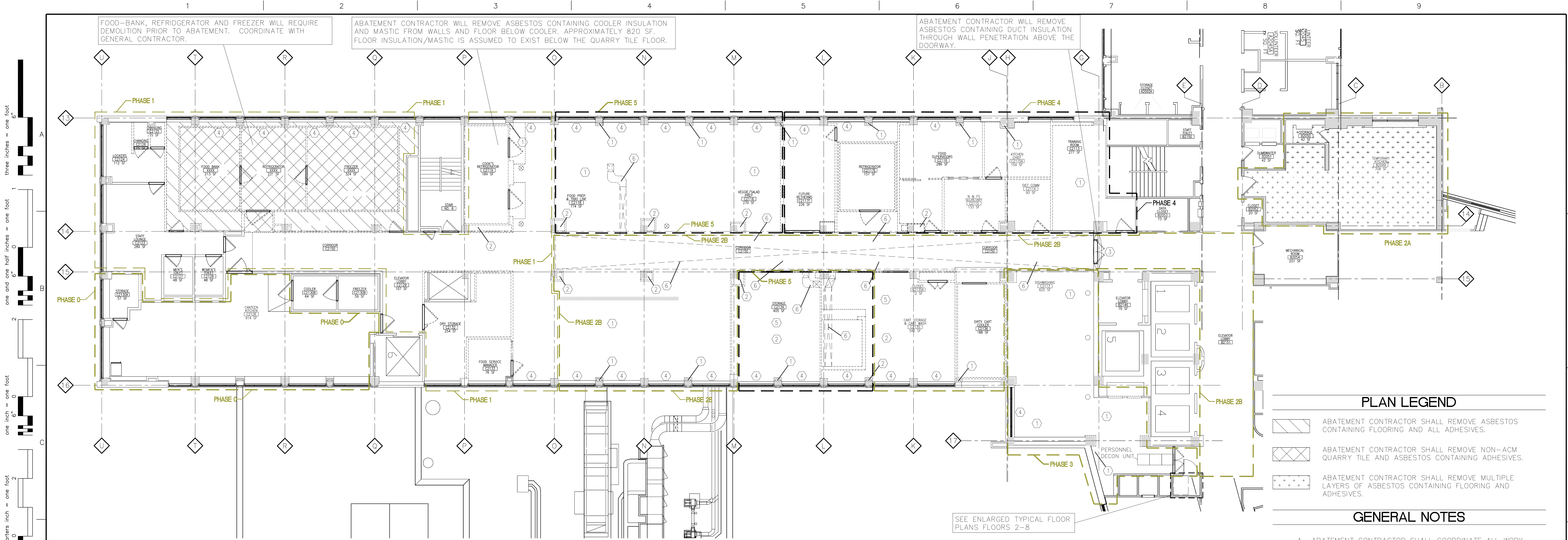
LIFE SAFETY LEGEND:

- SMOKE RESISTIVE LINE
- ===== 30 MINUTE SMOKE BARRIER LINE
- 1-1-1-1-1-1- FIRE RESISTIVE RATED LINE, 1 HOUR
- 2-2-2-2-2-2- FIRE RESISTIVE RATED LINE, 2 HOUR
- 3-3-3-3-3-3- FIRE RESISTIVE RATED LINE, 3 HOUR
- 4-4-4-4-4-4- FIRE RESISTIVE RATED LINE, 4 HOUR
- 1s-1s-1s-1s-1s- FIRE-RATED, SMOKE BARRIER LINE, 1 HOUR
- 2s-2s-2s- FIRE-RATED, SMOKE BARRIER LINE, 2 HOUR
- 3s-3s-3s- FIRE-RATED, SMOKE BARRIER LINE, 3 HOUR
- 4s-4s-4s- FIRE-RATED, SMOKE BARRIER LINE, 4 HOUR
- [Hatched Box] SUITE DESIGNATION
- [Circle with X] FIRE EXTINGUISHER
- [Hatched Box] EGRESS CORRIDOR
- [Circle with X] EXIT SIGN



KEY PLAN - 2ND FLOOR, C-WING

<div>Revisions</div> <div>Date</div>		CONSULTANTS: <div>Ring & DuChateau, LLP 17400 W. Capital Drive Brookfield, WI 53045</div> <div>Environmental Management Consulting, Inc. W7748 County Highway V Lake Mills, WI 53551</div> <div>attitude makes the positive difference.</div> <div>Boelter</div> <div>4200 N. Port Washington Road Glendale, WI 53212 Phone - 414.967.4200</div>		ARCHITECT/ENGINEERS: <div>13100 watertown plank road suite 200 elm grove, wi 53122</div> <div>nagel architects</div> <div>Nagel Architects Project Number: 151101</div>		Drawing Title <div>LIFE SAFETY PLAN SECOND FLOOR, C-WING</div> <div>Approved: Project Director</div> <div>-</div> <div>-</div>		Project Title <div>RENOVATE FOOD PRODUCTION ON 2C</div> <div>Location William S. Middleton Memorial VA, Madison WI</div> <div>Date 05/05/2017</div> <div>Checked SAM</div> <div>Drawn EAG</div>		100% CONSTRUCTION DOCUMENTS <div>Project Number 607-16-131</div> <div>Building Number Bldg 1 2nd Floor C-Wing</div> <div>Drawing Number G102 Dwg. 02 of 99</div>		Office of Construction and Facilities Management <div>Department of Veterans Affairs</div>	
--------------------------------------	--	--	--	---	--	---	--	--	--	--	--	---	--



PLAN LEGEND

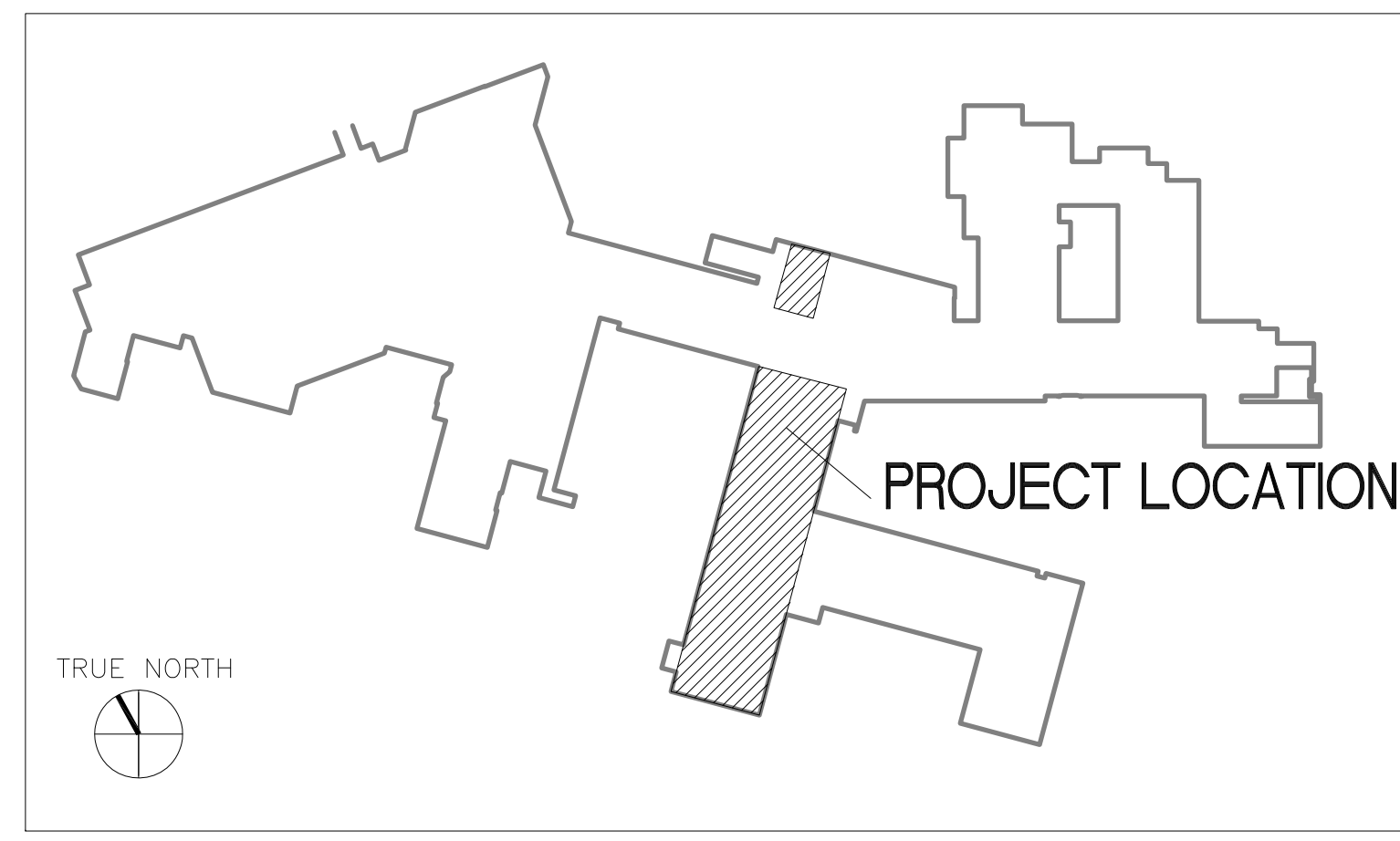
- ABATEMENT CONTRACTOR SHALL REMOVE ASBESTOS CONTAINING FLOORING AND ALL ADHESIVES.
- ABATEMENT CONTRACTOR SHALL REMOVE NON-ACM QUARRY TILE AND ASBESTOS CONTAINING ADHESIVES.
- ABATEMENT CONTRACTOR SHALL REMOVE MULTIPLE LAYERS OF ASBESTOS CONTAINING FLOORING AND ADHESIVES.

GENERAL NOTES

- A. ABATEMENT CONTRACTOR SHALL COORDINATE ALL WORK WITH GENERAL CONTRACTOR.
- B. ALL DEMOLITION NECESSARY TO ACCESS PIPING SHALL BE COMPLETED AS A COORDINATED EFFORT BETWEEN THE GENERAL CONTRACTOR AND THE ABATEMENT CONTRACTOR. ANY AREAS WHERE DEMOLITION IS LIKELY TO CAUSE A DISTURBANCE TO THE ASBESTOS CONTAINING INSULATION, DEMOLITION SHALL BE COMPLETED BY THE ASBESTOS ABATEMENT CONTRACTOR.
- C. DETERMINATION OF WHERE REGULATED AREAS ARE ESTABLISHED AND ENCLOSURES ARE CONSTRUCTED WILL BE MADE IN THE FIELD AND BASED ON WORK AREAS AND AMOUNT OF ASBESTOS REMOVAL.
- D. LOCATION OF PERSONNEL DECONTAMINATION FACILITY WILL NEED TO BE DETERMINED IN THE FIELD AND COORDINATED WITH THE GENERAL CONTRACTOR.
- E. EXHAUST OF HEPA FILTERED EXHAUST FANS WILL NEED TO BE COORDINATED WITH THE VA REPRESENTATIVE AND THE GENERAL CONTRACTOR.
- F. ABATEMENT WORK WILL BE COMPLETED IN MULTIPLE PHASES. SEE PHASING PLANS.

- KEY NOTES**
- ABATEMENT CONTRACTOR SHALL REMOVE ASBESTOS CONTAINING PIPE INSULATION AND/OR FITTINGS. PIPING IS LOCATED ABOVE CEILINGS AND/OR ON RISER PIPING INSIDE ENCLOSED CHASE/WALL.
 - ABATEMENT CONTRACTOR SHALL DEMOLISH TO CHECK FOR PIPES ABOVE INACCESSIBLE CEILING AND INSIDE WALLS.
 - ABATEMENT CONTRACTOR SHALL REMOVE ASBESTOS CONTAINING FIRE DOOR.
 - ABATEMENT CONTRACTOR SHALL REMOVE ASBESTOS CONTAINING TRANSITE PANEL FROM BEHIND RADIATOR STEAM CONVECTOR.
 - ABATEMENT CONTRACTOR SHALL REMOVE ASBESTOS CONTAINING VIBRATION DAMPENER.
 - ABATEMENT CONTRACTOR WILL REMOVE ASBESTOS CONTAINING DUCT INSULATION AND METAL DUCT. CONTRACTOR WILL DEMOLISH NON-ACM PLASTER CEILING TO ACCESS. ABATEMENT CONTRACTOR WILL COORDINATE EXTENT OF DUCT DEMOLITION WITH HVAC CONTRACTOR.

SUMMARY OF ESTIMATED QUANTITY OF ASBESTOS CONTAINING PIPE INSULATION TO BE REMOVED			
ROOM	PIPE INSULATION	PIPE FITTINGS	LOCATIONS
C2113	132 LF	7 Fittings	Above ceiling/inside walls
2116 Prep	34 LF		Above ceiling/inside walls
C2117	52 LF	4 Fittings	Above ceiling/inside walls
C2117C	36 LF		Above ceiling/inside walls
C2117D	22 LF		Above ceiling/inside walls
C2117F	3 LF		Above ceiling/inside walls
C2118	170 LF		Above ceiling/inside walls
C2119	72 LF		Above ceiling/inside walls
C2121	78 LF		Inside walls
C2134	74 LF		Above ceiling/inside walls
C2135	22 LF		Above ceiling
C2136	15 LF		Above ceiling
C2150	55 LF		Above ceiling
Unknown Areas	200 LF	30 Fittings	Inside enclosed chases



KEY PLAN - 2ND FLOOR, C-WING

100% CONSTRUCTION DOCUMENTS

CONSULTANTS: Ring & DuChateau, LLP 17400 W. Capitol Drive Brookfield, WI 53045 Environmental Management Consulting, Inc. W7748 County Highway V Lake Mills, WI 53551 attitude makes the positive difference. Boelter 4200 N. Port Washington Road Glendale, WI 53122 Phone - 414.967.4200		ARCHITECT/ENGINEERS: 13100 watertown plank road suite 200 elm grove, wi 53122 magel architects Nagel Architects Project Number: 151101		Drawing Title ARCHITECTURAL DEMOLITION PLAN SECOND FLOOR, C-WING Approved Project Director - - -		Project Title RENOVATE FOOD PRODUCTION ON 2C Location William S. Middleton Memorial VA, Madison WI Date 05/05/2017 Checked JTB Drawn JRN		Project Number 607-16-131 Building Number Bldg 1 2nd Floor C-Wing Drawing Number HA102 Dwg. 03 of 99		Office of Construction and Facilities Management Department of Veterans Affairs	
--	--	--	--	--	--	---	--	--	--	---	--