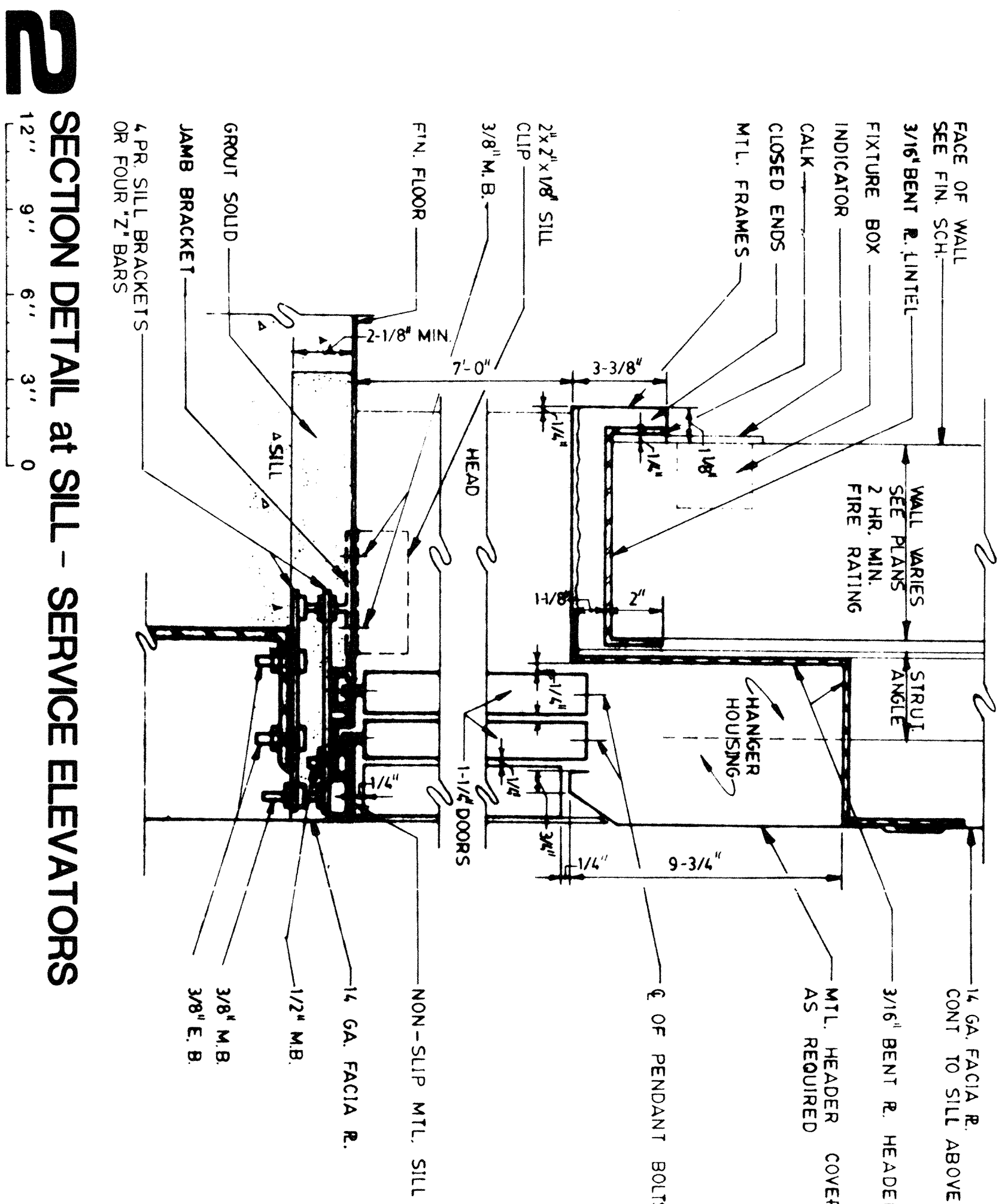


3 DETAIL at ELEVATOR DOOR - SERVICE ELEVATORS
NOT TO SCALE

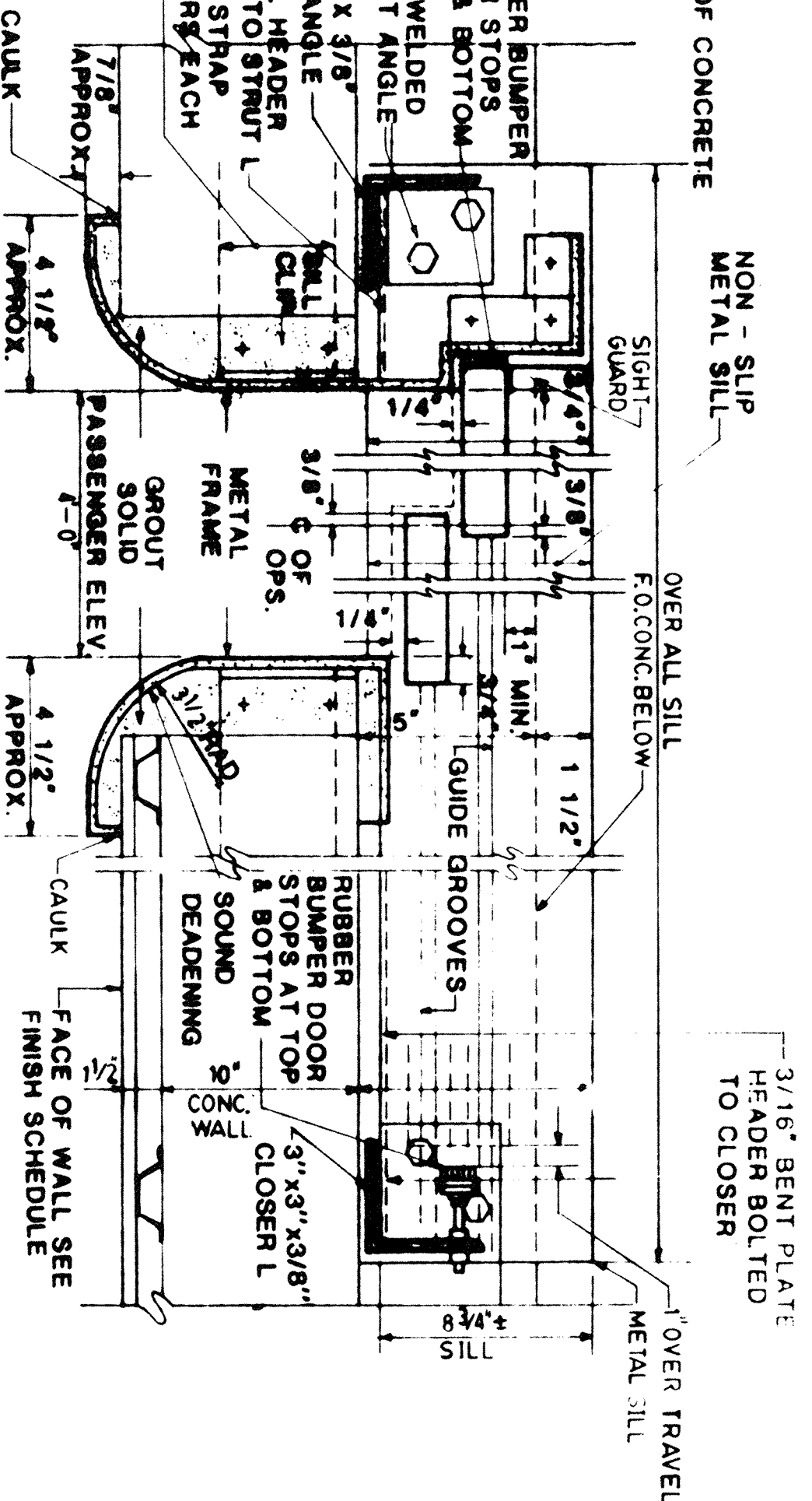
4 ELEVATION-SERVICE ELEVATOR DOOR AT GROUND FLOOR

5 ELEVATION-SERVICE ELEVATOR DOOR AT GROUND, FIRST AND SECOND FLOOR

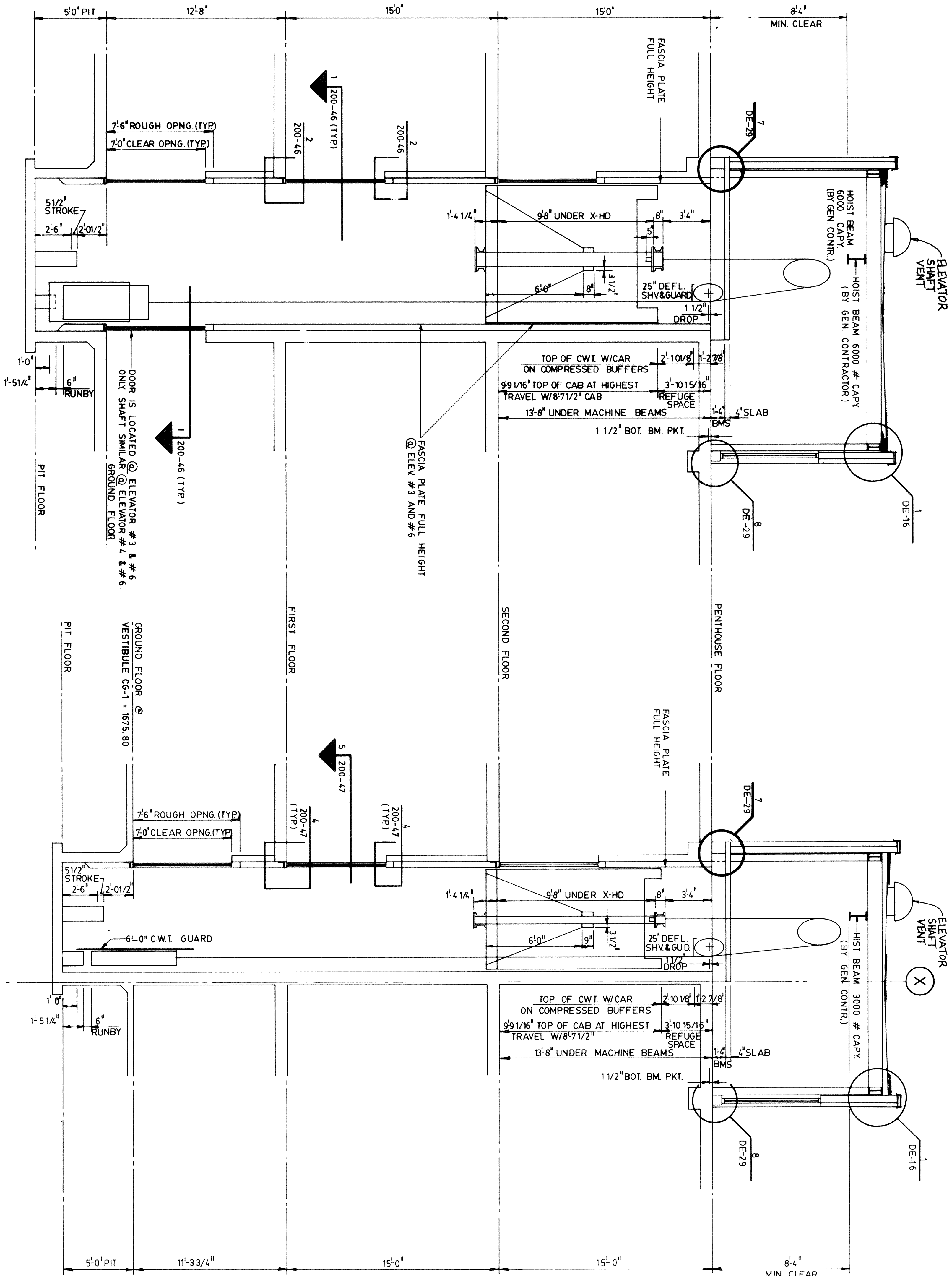
6 ELEVATION-PASSENGER ELEVATOR DOOR AT GROUND, FIRST AND SECOND FLOOR



2 SECTION DETAIL at SILL - SERVICE ELEVATORS
12' 9' 6' 3' 0'



1 PLAN DETAIL at ELEVATOR DOOR - SERVICE ELEVATORS
NOT TO SCALE



7 SECTION at SERVICE ELEVATORS #3 & #6
ELEVATORS #4 & 5 SIMILAR

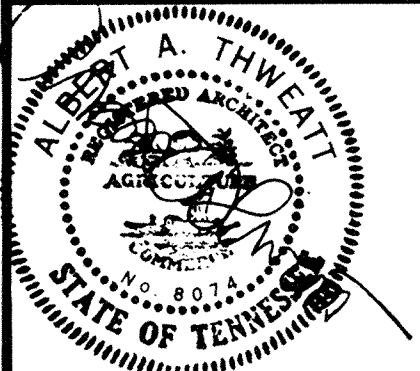
8 SECTION at PASSENGER ELEVATORS #1 & #2

GRISHAM SMITH AND PARTNERS
3310 West End Avenue, 10th Floor, Suite 1025
Nashville, Tennessee 37202-1625

PROJECT TITLE
BED TOWERS/
RENOVATION PHASE 2

LOCATION
VAMC
MOUNTAIN HOME, TN.

AREAS OF NEW CONSTRUCTION ARE
FULLY PROTECTED BY AN AUTOMATIC
FIRE EXTINGUISHMENT SYSTEM



DATE	PROJECT NO.	DRAWING TITLE	BLDG NO.	PROJECT TITLE
01 13 86	621-064	ELEVATOR SECTIONS AND DETAILS	200	BED TOWERS/ RENOVATION PHASE 2
DRAWING NO.	PROJECT DIRECTOR APPROVAL	DRAWN BY :	LOCATION	AREAS OF NEW CONSTRUCTION ARE FULLY PROTECTED BY AN AUTOMATIC FIRE EXTINGUISHMENT SYSTEM
200-46			VAMC MOUNTAIN HOME, TN.	