



Fisher House
Foundation, Inc.



DESIGNTECH ASSOCIATES
ARCHITECTS + DESIGNERS

1501 Broadway Suite 700A
New York, New York 10038
212-944-7770 Fax 212-944-7803

AKF
engineers

1801 Broadway, Suite 700
New York, New York 10038
212-944-7770 Fax 212-944-7803



CAMERON ENGINEERING
& ASSOCIATES, LLP

LEGEND

- BEARING WALLS AND PARTITIONS
SEE PLANS AND SECTIONS
- CMU WALL 8" THICK 2HR FIRE RATED
- SECTION
Section #
Sheet #
- ELEVATION
Elev #
Sheet #
- DOOR DETAILS
Door types #
Door #
Hardware spec #
- WINDOW #
- FIRE EXTINGUISHER
+ CAB
- WALL HUNG
FIRE EXTINGUISHER
- F.A. MANUAL PULL STATION
- F.A. VISUAL STROBE DEVICE
(WALL MTD. 80" APFT)
- F.A. SPEAKER STROBE
(WALL MTD. 80" APFT)
- SMOKE DETECTOR
- THERMAL DETECTOR
- PHOTOELECTRIC
SMOKE DETECTOR
- EXIT LIGHT
- DOOR HOLD OPEN DEVICE
REQUIRES POWER FEED
AND INTERCONNECT TO
FIRE ALARM SYSTEM
- ADA MINI HORN, WALL
- SD STORM DRAIN
- FD FLOOR DRAIN

WALL "ACCESS PANEL" DRYER
AP

CEILING "ACCESS PANEL" AP

REVISION	DATE	DESCRIPTION

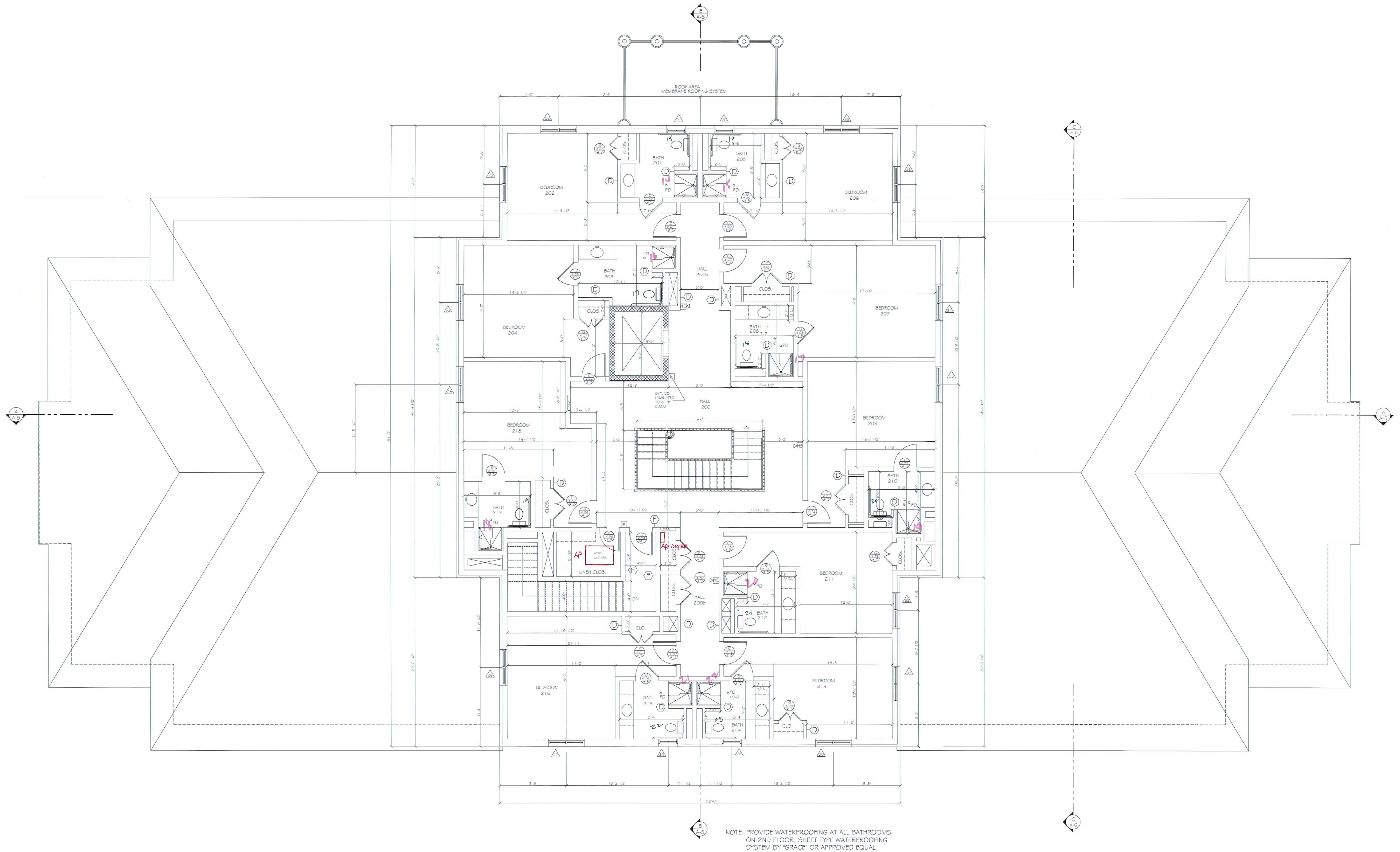
PROPOSED FISHER HOUSE
VA MEDICAL CENTER
DALLAS, TX

DRAWING

SECOND FLOOR PLAN

SCALE	FLOOR	DRAWING No.
1/4"=1'-0"		
DATE		

A-2



NOTE: PROVIDE WATERPROOFING AT ALL BATHROOMS
ON 2ND FLOOR, SHEET TYPE WATERPROOFING
SYSTEM BY 'GRACE' OR APPROVED EQUAL