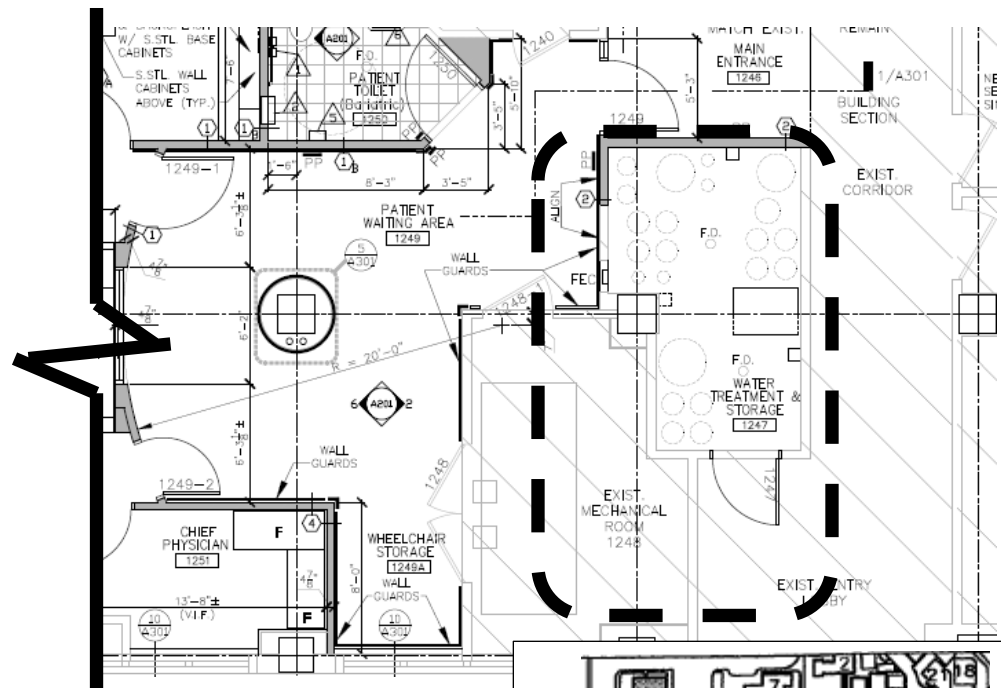
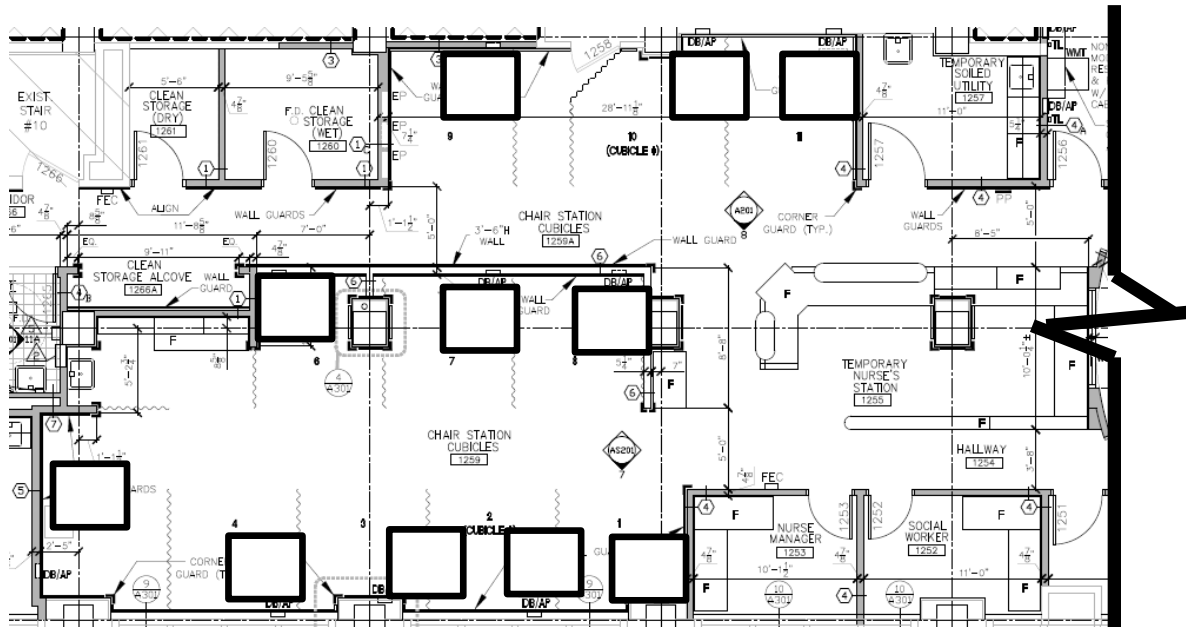

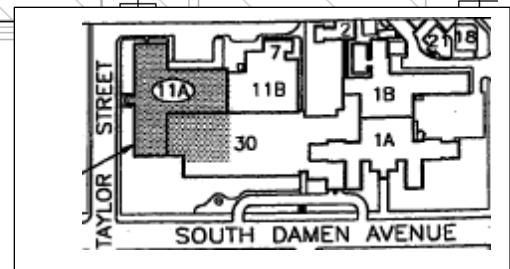


## Appendix A - Taylor Bldg. 1<sup>st</sup> floor

A new 6,300sf 12-station outpatient dialysis unit with adjacent water treatment and storage system by MAR COR.

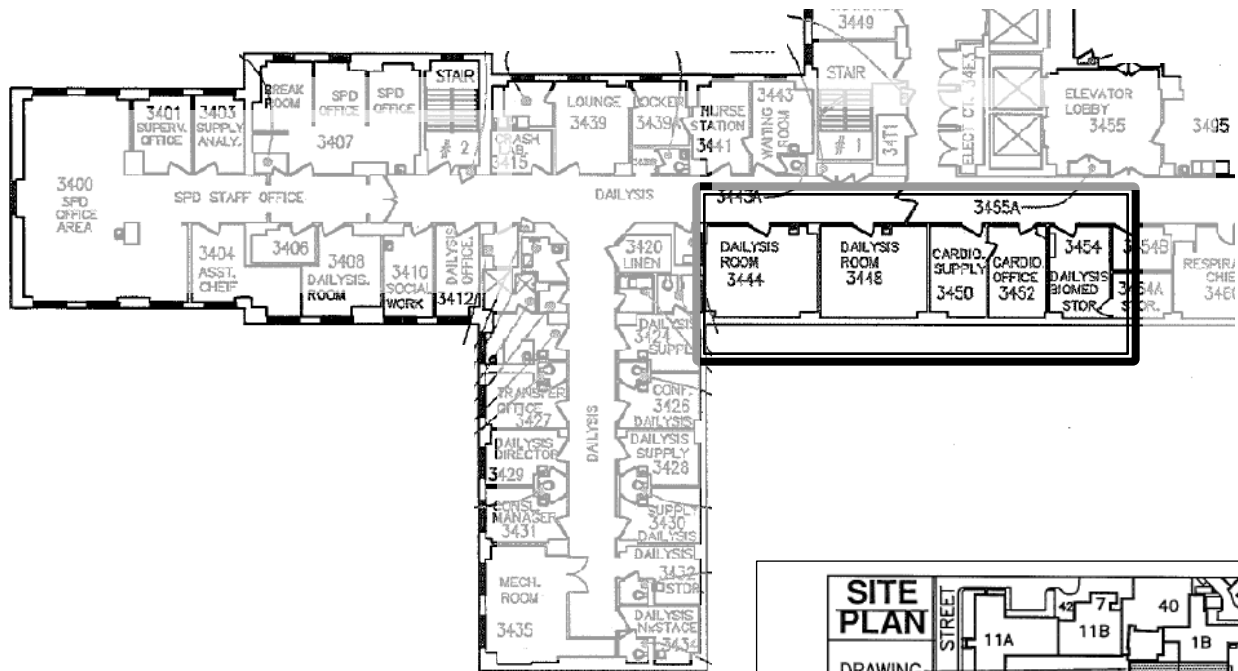
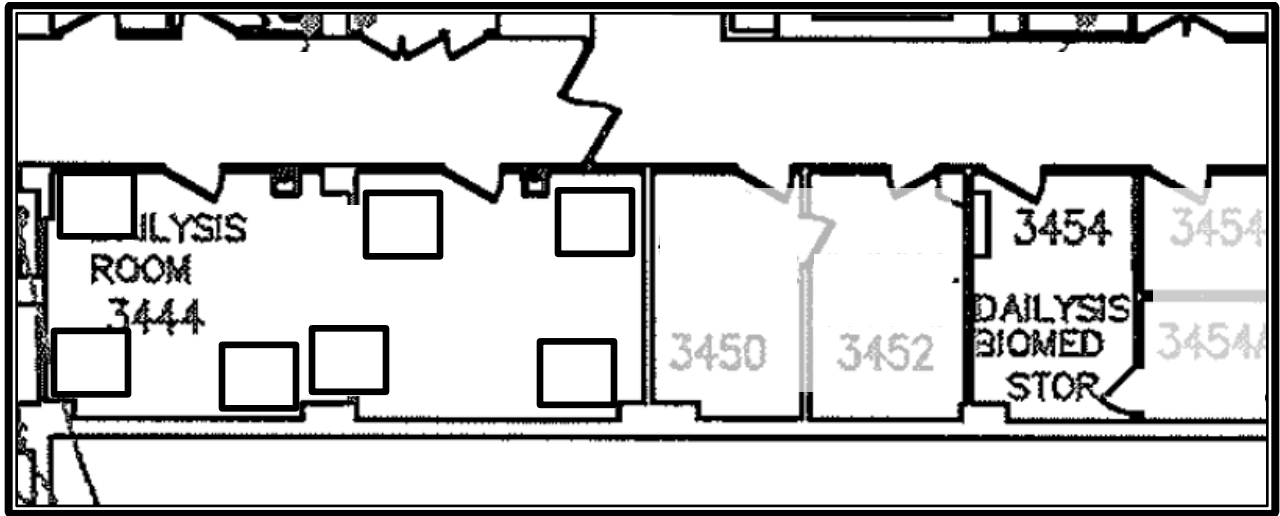



 = Dialysis treatment wall connection

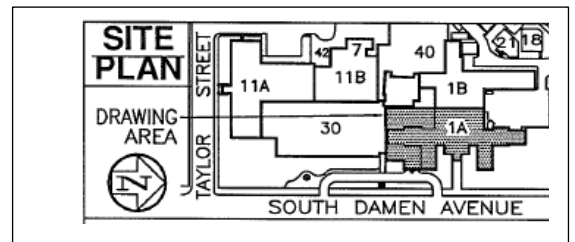


## Appendix B - Damen Bldg. 3<sup>rd</sup> floor

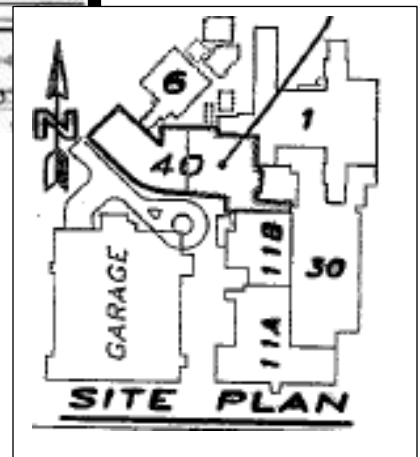
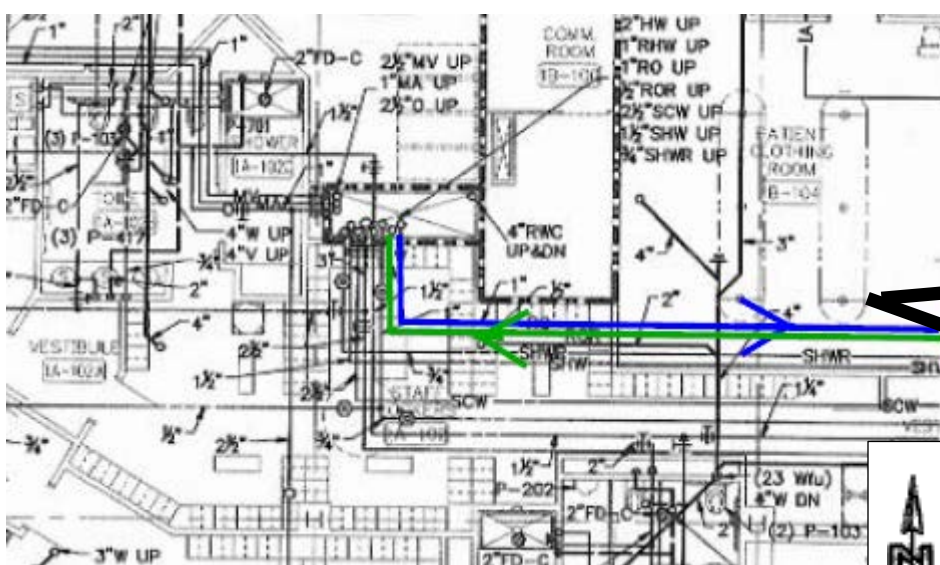
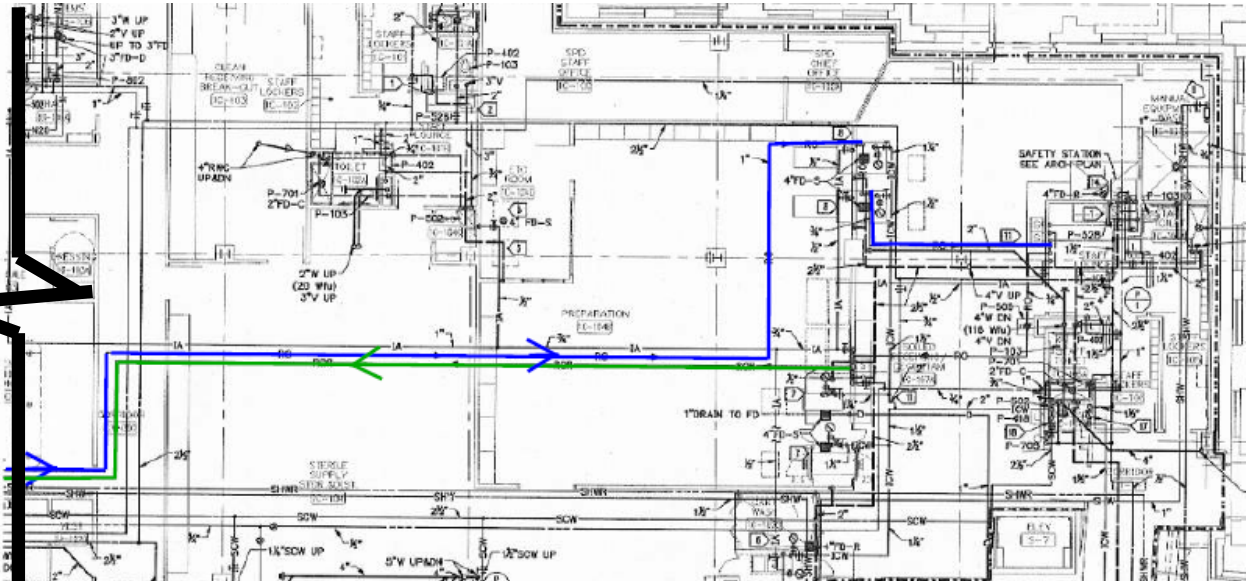
A 8-station outpatient dialysis unit with adjacent water treatment system.



 = Dialysis treatment wall connection

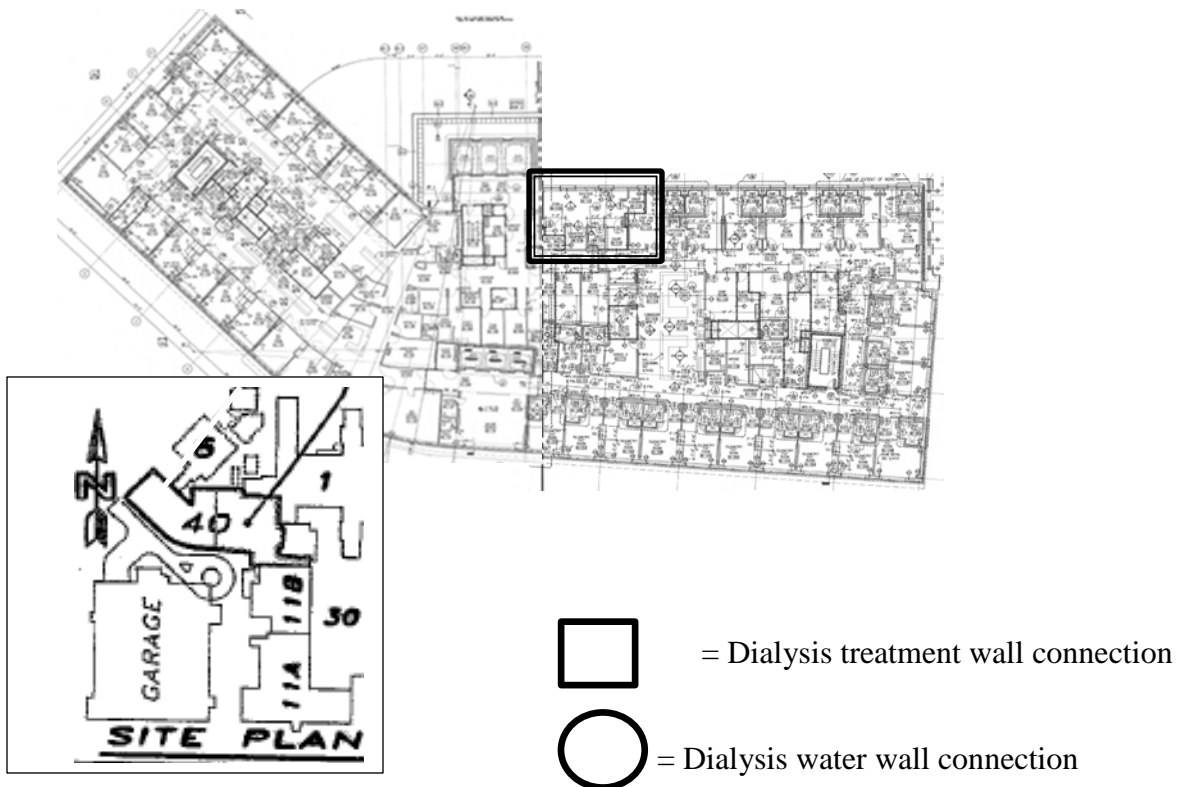
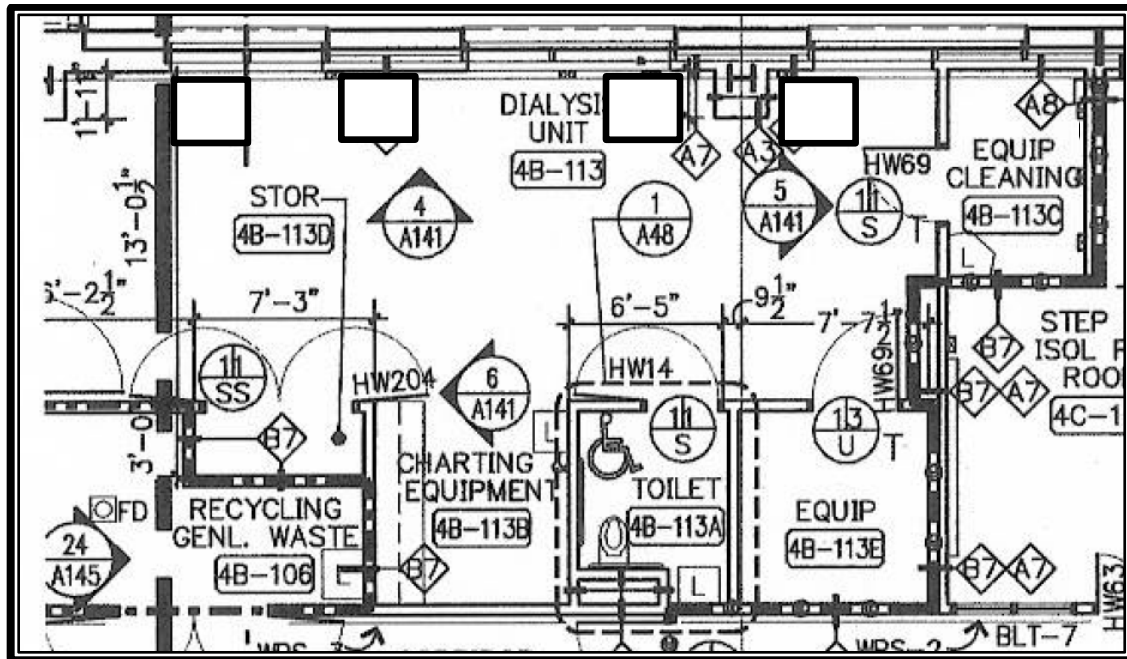


# Appendix C – Bed Tower Bldg. 1st floor Sterile Supply Service area



## Appendix D – Bed Tower Bldg. 4th floor Dialysis Unit

A 6-station inpatient dialysis unit and adjacent equipment cleaning room with 3 dialysis water connections, served by a remote water treatment system (See Appendix D).



## Appendix E – Bed Tower Bldg. 4<sup>th</sup> floor Isolation and Telemetry Rooms

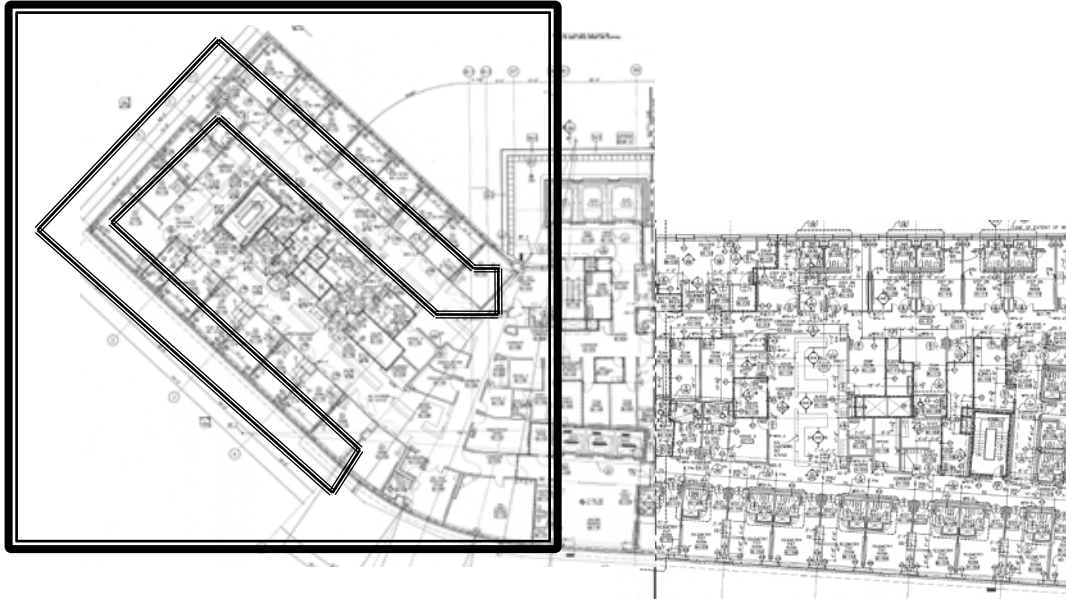
21 Dialysis water connection-fitted rooms served by a remote water treatment system (See Appendix G).



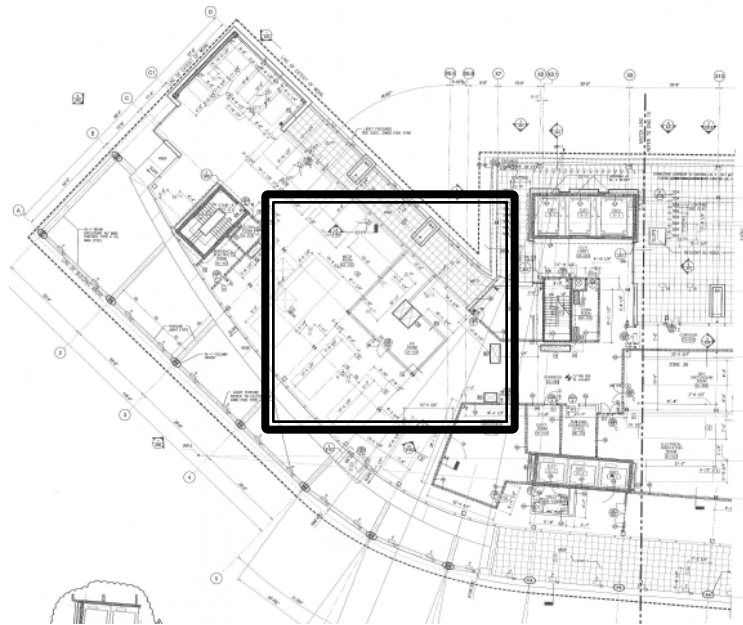
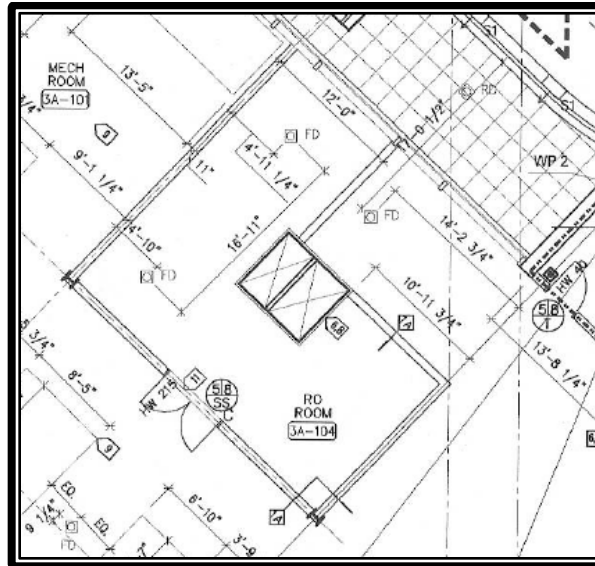
## Appendix F – Bed Tower Bldg. 4<sup>th</sup> floor

### ICU Rooms

21 Dialysis water connection-fitted rooms served by a remote water treatment system (See Appendix G).



**Appendix G – Bed Tower Bldg. 3rd floor**  
**Dialysis water treatment system on 3<sup>rd</sup> floor, serving 1<sup>st</sup> and 4<sup>th</sup> floor**



See Appendix C for 1<sup>st</sup> floor plumbing plan

See Appendixes C, D, E, and F for areas served.

See Appendix H for 3<sup>rd</sup> floor plumbing plan under 4<sup>th</sup> floor areas served

## Appendix H – Bed Tower Bldg. 3rd floor

### 3<sup>rd</sup> Fl. (Mezzanine) Plumbing Plan

(under the 4<sup>th</sup> floor rooms served)

