

CENTRAL TEXAS VETERANS HEALTH CARE SYSTEM (CTVHCS)

DORIS MILLER VETERANS' MEDICAL CENTER

674A4-15-104 REPLACE SITE WATER AND SEWER SYSTEMS

4800 MEMORIAL DRIVE, WACO, TEXAS 76711



NTS
PROJECT LOCATION MAP

DRAWING INDEX

Replace Site Water and Sewer Systems

674A4-15-301

Drawing Index

- 1 CG001 Cover Sheet
- 2 VF1 Existing Conditions – Tasks 1, 2, 4 & 5
- 3 VF2 Existing Conditions – Task 1
- 4 VF3 Existing Conditions – Task 1
- 5 VF4 Existing Conditions – Task 2, 4, 5
- 6 CD1 Demolition – Task 1, 2, 4, 5
- 7 CS1 Sanitary Sewer Replacement – Task 1
- 8 CS2 Sanitary Sewer Replacement – Task 1
- 9 CS3 Sanitary Sewer Replacement – Task 1
- 10 CS4 Meter Valve Box Design – Tasks 2, 4
- 11 CS5 Water valve and replacement in Water Meter Vault – Task 2
- 12 CS6 Remove and Replace Water Valves – Task 3
- 13 CS7 Water – Overall
- 14 CS8 Photos – Water Vaults
- 15 CS9 Standard Drainage Details
- 16 CS10 Standard Pavement Details
- 17 CS11 Standard Utilities Details
- 18 W-CS-0.01 Campus Site Plan Storm Sewer Layout
- 19 W-CS-0.02 Enlarged Site Plan – NE
- 20 W-CS-0.03 Enlarged Site Plan – NW
- 21 W-CS-0.04 Enlarged Site Plan – SE
- 22 W-CS-0.05 Enlarged Site Plan – SW

Revised	By	Date	Description
1	CG	04/04/2017	Initial Issue
2	CG	04/04/2017	Revised
3	CG	04/04/2017	Revised
4	CG	04/04/2017	Revised
5	CG	04/04/2017	Revised
6	CG	04/04/2017	Revised
7	CG	04/04/2017	Revised
8	CG	04/04/2017	Revised
9	CG	04/04/2017	Revised
10	CG	04/04/2017	Revised
11	CG	04/04/2017	Revised
12	CG	04/04/2017	Revised
13	CG	04/04/2017	Revised
14	CG	04/04/2017	Revised
15	CG	04/04/2017	Revised
16	CG	04/04/2017	Revised
17	CG	04/04/2017	Revised
18	CG	04/04/2017	Revised
19	CG	04/04/2017	Revised
20	CG	04/04/2017	Revised
21	CG	04/04/2017	Revised
22	CG	04/04/2017	Revised

CONSULTANTS:

ARCHITECT/ENGINEERS:

Drawing Title

Approved Project Director

Project Title

Location

Date
April 2017

Checked

Drawn

Project Number

Building Number

Drawing Number

CG001

Page 1 of 22

Office of
Construction
and Facilities
Management

Department of
Veterans Affairs

1. 10' 0" = 1" (Horizontal)
 2. 10' 0" = 1" (Vertical)
 3. 10' 0" = 1" (Horizontal)
 4. 10' 0" = 1" (Vertical)
 5. 10' 0" = 1" (Horizontal)
 6. 10' 0" = 1" (Vertical)
 7. 10' 0" = 1" (Horizontal)
 8. 10' 0" = 1" (Vertical)
 9. 10' 0" = 1" (Horizontal)
 10. 10' 0" = 1" (Vertical)
 11. 10' 0" = 1" (Horizontal)
 12. 10' 0" = 1" (Vertical)
 13. 10' 0" = 1" (Horizontal)
 14. 10' 0" = 1" (Vertical)
 15. 10' 0" = 1" (Horizontal)
 16. 10' 0" = 1" (Vertical)
 17. 10' 0" = 1" (Horizontal)
 18. 10' 0" = 1" (Vertical)
 19. 10' 0" = 1" (Horizontal)
 20. 10' 0" = 1" (Vertical)
 21. 10' 0" = 1" (Horizontal)
 22. 10' 0" = 1" (Vertical)
 23. 10' 0" = 1" (Horizontal)
 24. 10' 0" = 1" (Vertical)
 25. 10' 0" = 1" (Horizontal)
 26. 10' 0" = 1" (Vertical)
 27. 10' 0" = 1" (Horizontal)
 28. 10' 0" = 1" (Vertical)
 29. 10' 0" = 1" (Horizontal)
 30. 10' 0" = 1" (Vertical)
 31. 10' 0" = 1" (Horizontal)
 32. 10' 0" = 1" (Vertical)
 33. 10' 0" = 1" (Horizontal)
 34. 10' 0" = 1" (Vertical)
 35. 10' 0" = 1" (Horizontal)
 36. 10' 0" = 1" (Vertical)
 37. 10' 0" = 1" (Horizontal)
 38. 10' 0" = 1" (Vertical)
 39. 10' 0" = 1" (Horizontal)
 40. 10' 0" = 1" (Vertical)
 41. 10' 0" = 1" (Horizontal)
 42. 10' 0" = 1" (Vertical)
 43. 10' 0" = 1" (Horizontal)
 44. 10' 0" = 1" (Vertical)
 45. 10' 0" = 1" (Horizontal)
 46. 10' 0" = 1" (Vertical)
 47. 10' 0" = 1" (Horizontal)
 48. 10' 0" = 1" (Vertical)
 49. 10' 0" = 1" (Horizontal)
 50. 10' 0" = 1" (Vertical)
 51. 10' 0" = 1" (Horizontal)
 52. 10' 0" = 1" (Vertical)
 53. 10' 0" = 1" (Horizontal)
 54. 10' 0" = 1" (Vertical)
 55. 10' 0" = 1" (Horizontal)
 56. 10' 0" = 1" (Vertical)
 57. 10' 0" = 1" (Horizontal)
 58. 10' 0" = 1" (Vertical)
 59. 10' 0" = 1" (Horizontal)
 60. 10' 0" = 1" (Vertical)
 61. 10' 0" = 1" (Horizontal)
 62. 10' 0" = 1" (Vertical)
 63. 10' 0" = 1" (Horizontal)
 64. 10' 0" = 1" (Vertical)
 65. 10' 0" = 1" (Horizontal)
 66. 10' 0" = 1" (Vertical)
 67. 10' 0" = 1" (Horizontal)
 68. 10' 0" = 1" (Vertical)
 69. 10' 0" = 1" (Horizontal)
 70. 10' 0" = 1" (Vertical)
 71. 10' 0" = 1" (Horizontal)
 72. 10' 0" = 1" (Vertical)
 73. 10' 0" = 1" (Horizontal)
 74. 10' 0" = 1" (Vertical)
 75. 10' 0" = 1" (Horizontal)
 76. 10' 0" = 1" (Vertical)
 77. 10' 0" = 1" (Horizontal)
 78. 10' 0" = 1" (Vertical)
 79. 10' 0" = 1" (Horizontal)
 80. 10' 0" = 1" (Vertical)
 81. 10' 0" = 1" (Horizontal)
 82. 10' 0" = 1" (Vertical)
 83. 10' 0" = 1" (Horizontal)
 84. 10' 0" = 1" (Vertical)
 85. 10' 0" = 1" (Horizontal)
 86. 10' 0" = 1" (Vertical)
 87. 10' 0" = 1" (Horizontal)
 88. 10' 0" = 1" (Vertical)
 89. 10' 0" = 1" (Horizontal)
 90. 10' 0" = 1" (Vertical)
 91. 10' 0" = 1" (Horizontal)
 92. 10' 0" = 1" (Vertical)
 93. 10' 0" = 1" (Horizontal)
 94. 10' 0" = 1" (Vertical)
 95. 10' 0" = 1" (Horizontal)
 96. 10' 0" = 1" (Vertical)
 97. 10' 0" = 1" (Horizontal)
 98. 10' 0" = 1" (Vertical)
 99. 10' 0" = 1" (Horizontal)
 100. 10' 0" = 1" (Vertical)



CONSULTANTS:

ARCHITECT/ENGINEERS:

Drawing Title

EXISTING SITE CONDITIONS
TASK 1-5

Project Title

Replace Site Water and Sewer Systems

Project Number

Building Number

Drawing Number

VP1

Location

DATE

April 2017

Checked

Drawn

STATE

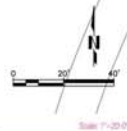
Page 2 of 22

Office of
Construction
and Facilities
Management





<div><div></div><div></div><div></div><div></div><div></div><div></div><div></div><div></div><div></div><div></div><div></div><div></div><div></div><div></div><div></div><div></div><div></div><div></div><div></div><div></div><div></div><div></div><div></div><div></div><div></div><div></div><div></div><div></div><div></div><div></div><div></div><div></div><div></div><div></div><div></div><div></div><div></div><div></div><div></div><div></div><div></div><div></div><div></div><div></div><div></div><div></div><div></div><div></div><div></div><div></div><div></div><div></div><div></div><div></div><div></div><div></div><div></div><div></div><div></div><div></div><div></div><div></div><div></div><div></div><div></div><div></div><div></div><div></div><div></div><div></div><div></div><div></div><div></div><div></div><div></div><div></div><div></div><div></div><div></div><div></div><div></div><div></div><div></div><div></div><div></div><div></div><div></div><div></div><div></div><div></div><div></div><div></div><div></div><div></div><div></div><div></div><div></div><div></div><div></div><div></div><div></div><div></div><div></div><div></div><div></div><div></div><div></div><div></div><div></div><div></div><div></div><div></div><div></div><div></div><div></div><div></div><div></div><div></div><div></div><div></div><div></div><div></div><div></div><div></div><div></div><div></div><div></div><div></div><div></div><div></div><div></div><div></div><div></div><div></div><div></div><div></div><div></div><div></div><div></div><div></div><div></div><div></div><div></div><div></div><div></div><div></div><div></div><div></div><div></div><div></div><div></div><div></div><div></div><div></div><div></div><div></div><div></div><div></div><div></div><div></div><div></div><div></div><div></div><div></div><div></div><div></div><div></div><div></div><div></div><div></div><div></div><div></div><div></div><div></div><div></div><div></div><div></div><div></div><div></div><div></div><div></div><div></div><div></div><div></div><div></div><div></div><div></div><div></div><div></div><div></div><div></div><div></div><div></div><div></div><div></div><div></div><div></div><div></div><div></div><div></div><div></div><div></div><div></div><div></div><div></div><div></div><div></div><div></div><div></div><div></div><div></div><div></div><div></div><div></div><div></div><div></div><div></div><div></div><div></div><div></div><div></div><div></div><div></div><div></div><div></div><div></div><div></div><div></div><div></div><div></div><div></div><div></div><div></div><div></div><div></div><div></div><div></div><div></div><div></div><div></div><div></div><div></div><div></div><div></div><div></div><div></div><div></div><div></div><div></div><div></div><div></div><div></div><div></div><div></div><div></div><div></div><div></div><div></div><div></div><div></div><div></div><div></div><div></div><div></div><div></div><div></div><div></div><div></div><div></div><div></div><div></div><div></div><div></div><div></div><div></div><div></div><div></div><div></div><div></div><div></div><div></div><div></div><div></div><div></div><div></div><div></div><div></div><div></div><div></div><div></div><div></div><div></div><div></div><div></div><div></div><div></div><div></div><div></div><div></div><div></div><div></div><div></div><div></div><div></div><div></div><div></div><div></div><div></div><div></div><div></div><div></div><div></div><div></div><div></div><div></div><div></div><div></div><div></div><div></div><div></div><div></div><div></div><div></div><div></div><div></div><div></div><div></div><div></div><div></div><div></div><div></div><div></div><div></div><div></div><div></div><div></div><div></div><div></div><div></div><div></div><div></div><div></div><div></div><div></div><div></div><div></div><div></div><div></div><div></div><div></div><div></div><div></div><div></div><div></div><div></div><div></div><div></div><div></div><div></div><div></div><div></div><div></div><div></div><div></div><div></div><div></div><div></div><div></div><div></div><div></div><div></div><div></div><div></div><div></div><div></div><div></div><div></div><div></div><div></div><div></div><div></div><div></div><div></div><div></div><div></div><div></div><div></div><div></div><div></div><div></div><div></div><div></div><div></div><div></div><div></div><div></div><div></div><div></div><div></div><div></div><div></div><div></div><div></div><div></div><div></div><div></div><div></div><div></div><div></div><div></div><div></div><div></div><div></div><div></div><div></div><div></div><div></div><div></div><div></div><div></div><div></div><div></div><div></div><div></div><div></div><div></div><div></div><div></div><div></div><div></div><div></div><div></div><div></div><div></div><div></div><div></div><div></div><div></div><div></div><div></div><div></div><div></div><div></div><div></div><div></div><div></div><div></div><div></div><div></div><div></div><div></div><div></div><div></div><div></div><div></div><div></div><div></div><div></div><div></div><div></div><div></div><div></div><div></div><div></div><div></div><div></div><div></div><div></div><div></div><div></div><div></div><div></div><div></div><div></div><div></div><div></div><div></div><div></div><div></div><div></div><div></div><div></div><div></div><div></div><div></div><div></div><div></div><div></div><div></div><div></div><div></div><div></div><div></div><div></div><div></div><div></div><div></div><div></div><div></div><div></div><div></div><div></div><div></div><div></div><div></div><div></div><div></div><div></div><div></div><div></div><div></div><div></div><div></div><div></div><div></div><div></div><div></div><div></div><div></div><div></div><div></div><div></div><div></div><div></div><div></div><div></div><div></div><div></div><div></div><div></div><div></div><div></div><div></div><div></div><div></div><div></div><div></div><div></div><div></div><div></div><div></div><div></div><div></div><div></div><div></div><div></div><div></div><div></div><div></div><div></div><div></div><div></div><div></div><div></div><div></div><div></div><div></div><div></div><div></div><div></div><div></div><div></div><div></div><div></div><div></div><div></div><div></div><div></div><div></div><div></div><div></div><div></div><div></div><div></div><div></div><div></div><div></div><div></div><div></div><div></div><div></div><div></div><div></div><div></div><div></div><div></div><div></div><div></div><div></div><div></div><div></div><div></div><div></div><div></div><div></div><div></div><div></div><div></div><div></div><div></div><div></div><div></div><div></div><div></div><div></div><div></div><div></div><div></div><div></div><div></div><div></div><div></div><div></div><div></div><div></div><div></div><div></div><div></div><div></div><div></div><div></div><div></div><div></div><div></div><div></div><div></div><div></div><div></div><div></div><div></div><div></div><div></div><div></div><div></div><div></div><div></div><div></div><div></div><div></div><div></div><div></div><div></div><div></div><div></div><div></div><div></div><div></div><div></div><div></div><div></div><div></div><div></div><div></div><div></div><div></div><div></div><div></div><div></div><div></div><div></div><div></div><div></div><div></div><div></div><div></div><div></div><div></div><div></div><div></div><div></div><div></div><div></div><div></div><div></div><div></div><div></div><div></div><div></div><div></div><div></div><div></div><div></div><div></div><div></div><div></div><div></div><div></div><div></div><div></div><div></div><div></div><div></div><div></div><div></div><div></div><div></div><div></div><div></div><div></div><div></div><div></div><div></div><div></div><div></div><div></div><div></div><div></div><div></div><div></div><div></div><div></div><div></div><div></div><div></div><div></div><div></div><div></div><div></div><div></div><div></div><div></div><div></div><div></div><div></div><div></div><div></div><div></div><div></div><div></div><div></div><div></div><div></div><div></div><div></div><div></div><div></div><div></div><div></div><div></div><div></div><div></div><div></div><div></div><div></div><div></div><div></div><div></div><div></div><div></div><div></div><div></div><div></div><div></div><div></div><div></div><div></div><div></div><div></div><div></div><div></div><div></div><div></div><div></div><div></div><div></div><div></div><div></div><div></div><div></div><div></div><div></div><div></div><div></div><div></div><div></div><div></div><div></div><div></div><div></div><div></div><div></div><div></div><div></div><div></div><div></div><div></div><div></div><div></div><div></div><div></div><div></div><div></div><div></div><div></div><div></div><div></div><div></div><div></div><div></div><div></div><div></div><div></div><div></div><div></div><div></div><div></div><div></div><div></div><div></div><div></div><div></div><div></div><div></div><div></div><div></div><div></div><div></div><div></div><div></div><div></div><div></div><div></div><div></div><div></div><div></div><div></div><div></div><div></div><div></div><div></div><div></div><div></div><div></div><div></div><div></div><div></div><div></div><div></div><div></div><div></div><div></div><div></div><div></div><div></div><div></div><div></div><div></div><div></div><div></div><div></div><div></div><div></div><div></div><div></div><div></div><div></div><div></div><div></div><div></div><div></div><div></div><div></div><div></div><div></div><div></div><div></div><div></div><div></div><div></div><div></div><div></div><div></div><div></div><div></div><div></div><div></div><div></div><div></div><div></div><div></div><div></div><div></div><div></div><div></div><div></div><div></div><div></div><div></div><div></div><div></div><div></div><div></div><div></div><div></div><div></div><div></div><div></div><div></div><div></div><div></div><div></div><div></div><div></div><div></div><div></div><div></div><div></div><div></div><div></div><div></div><div></div><div></div><div></div><div></div><div></div><div></div><div></div><div></div><div></div><div></div><div></div><div></div><div></div><div></div><div></div><div></div><div></div><div></div><div></div><div></div><div></div><div></div><div></div><div></div><div></div><div></div><div></div><div></div><div></div><div></div><div></div><div></div><div></div><div></div><div></div><div></div><div></div><div></div><div></div><div></div><div></div><div></div><div></div><div></div><div></div><div></div><div></div><div></div><div></div><div></div><div></div><div></div><div></div><div></div><div></div><div></div><div></div><div></div><div></div><div></div><div></div><div></div><div></div><div></div><div></div><div></div><div></div><div></div><div></div><div></div><div></div><div></div><div></div><div></div><div></div><div></div><div></div><div></div><div></div><div></div><div></div><div></div><div></div><div></div><div></div><div></div><div></div><div></div><div></div><div></div><div></div><div></div><div></div><div></div><div></div><div></div><div></div><div></div><div></div><div></div><div></div><div></div><div></div><div></div><div></div><div></div><div></div><div></div><div></div><div></div><div></div><div></div><div></div><div></div><div></div><div></div><div></div><div></div><div></div><div></div><div></div><div></div><div></div><div></div><div></div><div></div><div></div><div></div><div></div><div></div><div></div><div></div><div></div><div></div><div></div><div></div><div></div><div></div><div></div><div></div><div></div><div></div><div></div><div></div><div></div><div></div><div></div><div></div><div></div><div></div><div></div><div></div><div></div><div></div><div></div><div></div><div></div><div></div><div></div><div></div><div></div><div></div><div></div><div></div><div></div><div></div><div></div><div></div><div></div><div></div><div></div><div></div><div></div><div></div><div></div><div></div><div></div><div></div><div></div><div></div><div></div><div></div><div></div><div></div><div></div><div></div><div></div><div></div><div></div><div></div><div></div><div></div><div></div><div></div><div></div><div></div><div></div><div></div><div></div><div></div><div></div><div></div><div></div><div></div><div></div><div></div><div></div><div></div><div></div><div></div><div></div><div></div><div></div><div></div><div></div><div></div><div></div><div></div><div></div><div></div><div></div><div></div><div></div><div></div><div></div><div></div><div></div><div></div><div></div><div></div><div></div><div></div><div></div><div></div><div></div><div></div><div></div><div></div><div></div><div></div><div></div><div></div><div></div><div></div><div></div><div></div><div></div><div></div><div></div><div></div><div></div><div></div><div></div><div></div><div></div><div></div><div></div><div></div><div></div><div></div><div></div><div></div><div></div><div></div><div></div><div></div><div></div><div></div><div></div><div></div><div></div><div></div><div></div><div></div><div></div><div></div><div></div><div></div><div></div><div></div><div></div><div></div><div></div><div></div><div></div><div></div><div></div><div></div><div></div><div></div><div></div><div></div><div></div><div></div><div></div><div></div><div></div><div></div><div></div><div></div><div></div><div></div><div></div><div></div><div></div><div></div><div></div><div></div><div></div><div></div><div></div><div></div><div></div><div></div><div></div><div></div><div></div><div></div><div></div><div></div><div></div><div></div><div></div><div></div><div></div><div></div><div></div><div></div><div></div><div></div><div></div><div></div><div></div><div></div><div></div><div></div><div></div><div></div><div></div><div></div><div></div><div></div><div></div><div></div><div></div><div></div><div></div><div></div><div></div><div></div><div></div><div></</div></div>	
--	--





SCALE: 1" = 20'

CONSULTANTS

ARCHITECT/ENGINEERS

Drawing Title

EXISTING CONDITIONS
TASKS 2, 4, 5

Approved Project Director

Project Title

Location

Date

April 2017

Checked

Drawn

Project Number

Building Number

NA

Drawing Number

VF4

Sheets

Sheet 5 of 22

Office of
Construction
and Facilities
Management



Revised: 04/17/17

04/17/17



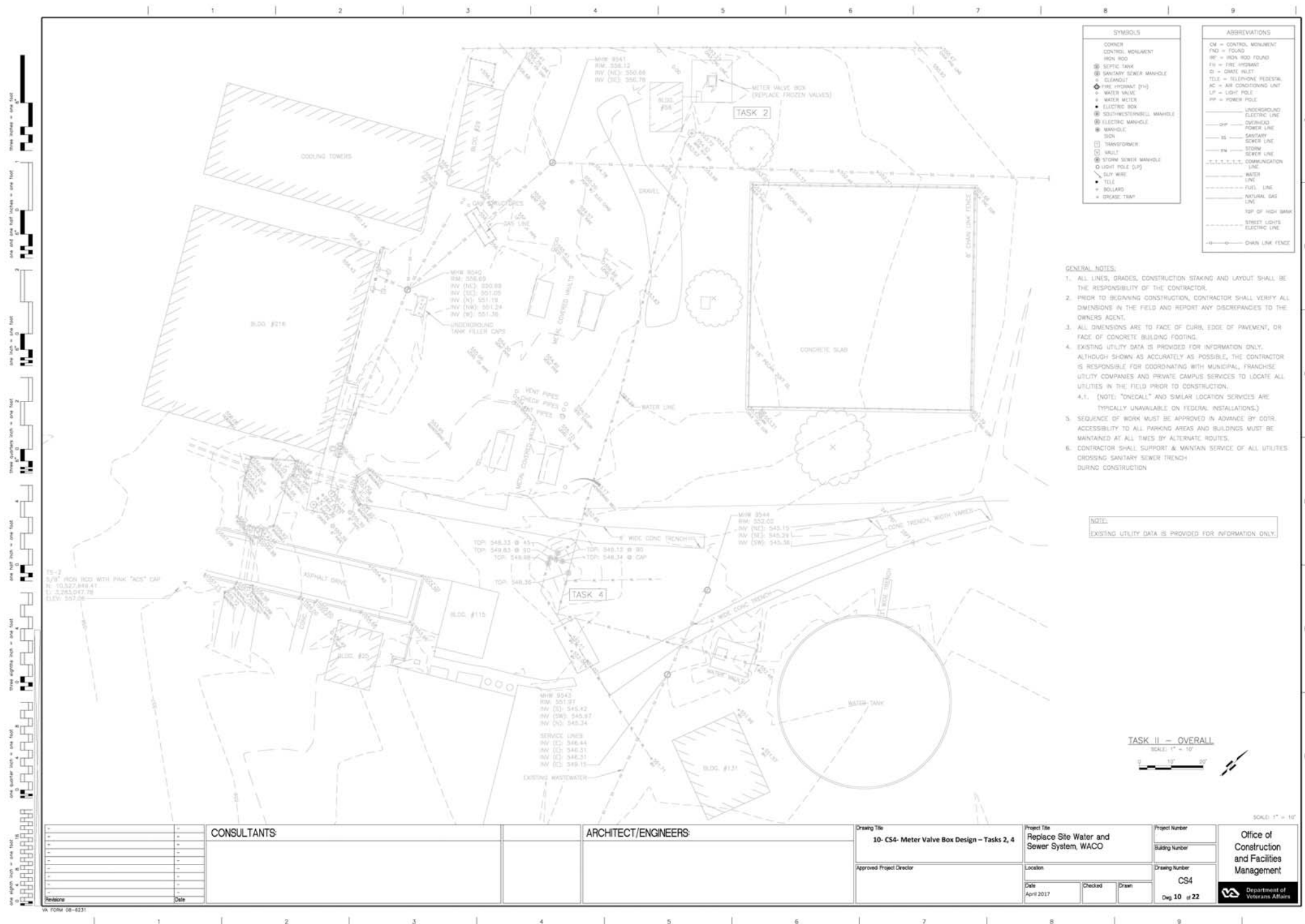


1. ALL LINES, GRADERS, CONSTRUCTION STAKING AND LAYOUT SHALL BE THE RESPONSIBILITY OF THE CONTRACTOR.
2. PRIOR TO BEGINNING CONSTRUCTION, CONTRACTOR SHALL VERIFY ALL DIMENSIONS IN THE FIELD AND REPORT ANY DISCREPANCIES TO THE OWNERS AGENT.
3. ALL DIMENSIONS ARE TO FACE OF CURB, EDGE OF PAVEMENT, OR FACE OF CONCRETE BUILDING FOOTING.
4. EXISTING UTILITY DATA IS PROVIDED FOR INFORMATION ONLY. ALTHOUGH SHOWN AS ACCURATELY AS POSSIBLE, THE CONTRACTOR IS RESPONSIBLE FOR COORDINATING WITH MUNICIPAL, FRANCHISE UTILITY COMPANIES AND PRIVATE GAS/UTILITY SERVICES TO LOCATE ALL UTILITIES IN THE FIELD PRIOR TO CONSTRUCTION. A.T. (NOTE: "UNEQUAL" AND SIMILAR LOCATION SERVICES ARE TYPICALLY UNAVAILABLE ON FEDERAL INSTALLATIONS.)
5. SEQUENCE OF WORK MUST BE APPROVED IN ADVANCE BY CDOT. ACCESSIBILITY TO ALL PARKING AREAS AND BUILDINGS MUST BE MAINTAINED AT ALL TIMES BY ALTERNATE ROUTES.
6. CONTRACTOR SHALL SUPPORT & MAINTAIN SERVICE OF ALL EXISTING UTILITIES CROSSING UTILITY TRENCH DURING CONSTRUCTION.

EXISTING UTILITY DATA IS PROVIDED FOR INFORMATION ONLY

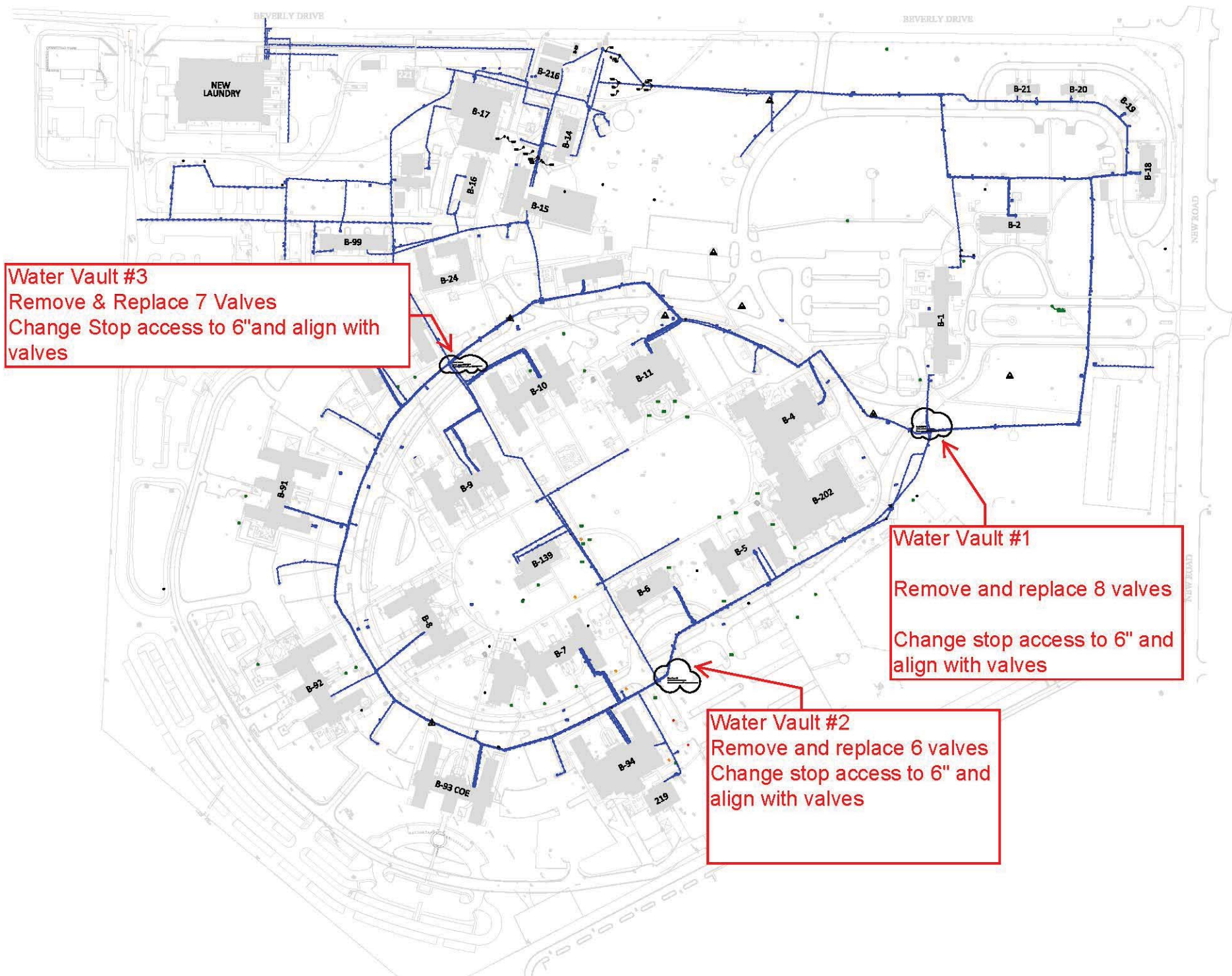
[illegible]

	-	CONSULTANTS:		ARCHITECT/ENGINEERS:		Drawing Title	Project Title			Project Number	Office of Construction and Facilities Management		
	-					7- CSI - Sanitary Sewer Replacement- Task 1			Replace Site Water and Sewer System, WACO			Bidding Number	
	-											NA	
	-											Drawing Number	
	-											CSI	
	-											Dep 7 of 22	
	-												
	-												
Personnel	Date					Approved Project Director	Location						
							Date	Checked	Drawn				
							April 2017						





 <https://creativecommons.org/licenses/by-nc-sa/4.0/>





PHOTOS

Water Vault #1 Photos



Water Vault #2 Photos



Water Vault #3 Photos



Main Water Valve Vault



DETAILS

CONSULTANTS:

ARCHITECT/ENGINEERS:

Drawing Title
CS8- Photos- Water Vaults

Approved Project Director

Project Title

Location

Date
April 2017

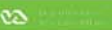
Project Number

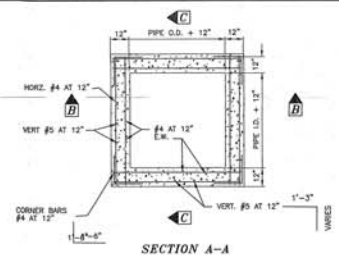
Building Number

Drawing Number

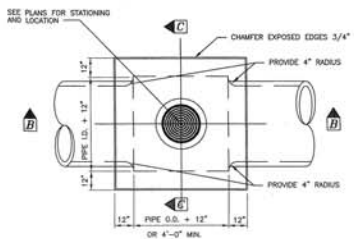
CS 8
Dep. 14 of 22

Office of
Construction
and Facilities
Management

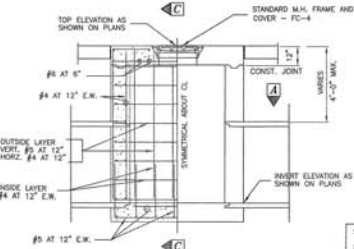




SECTION A-A



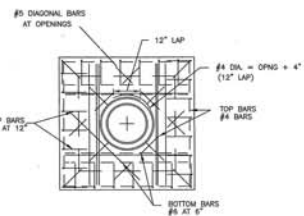
PLAN



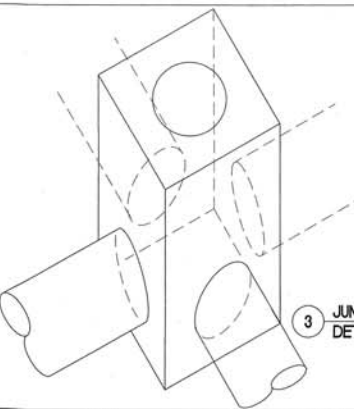
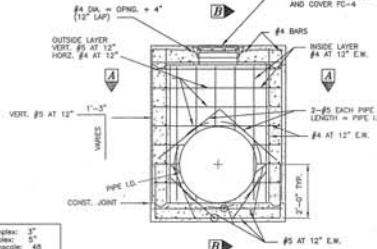
1 STANDARD MANHOLE TYPE 'C'

GENERAL NOTES

1. SEE PLAN PROFILE SHEETS FOR MANHOLE SIZE, LOCATION AND ELEVATION.
2. ALL MATERIALS OF CONSTRUCTION SHALL CONFORM WITH THE STANDARD SPECIFICATIONS AND SPECIAL CONDITIONS AND LATEST REVISIONS THEREOF.
3. CONCRETE SHALL HAVE A MINIMUM COMPRESSIVE STRENGTH OF 3000 PSI AT 28 DAYS UNLESS OTHERWISE NOTED. DESIGN MIX FOR 3000 POUND CONCRETE SHALL CONTAIN A MINIMUM OF 5 BAGS OF CEMENT PER CUBIC YARD.
4. ALL REINFORCING STEEL SHALL BE DEFORMED NEW BULLET INTERMEDIATE GRADE CONFORMING TO ASTM SPEC A-15-SET OR LATEST REVISIONS THEREOF.
5. STEEL COVER SHALL BE 2" FROM CENTER OF OUTSIDE LAYER OF STEEL TO FACE OF CONCRETE.
6. DIMENSIONS RELATING TO REINFORCING STEEL SHALL BE TO CENTER OF BARS.
7. CONSTRUCTION JOINTS WILL BE PERMITTED AS SHOWN ON PLANS.
8. THE ANGLE OF SLOPE OF INCOMING LATERAL PIPES IS THE ANGLE PRODUCED BY A LINE NORMAL TO THE CENTERLINE OF MANHOLE AND THE CENTERLINE OF THE INCOMING LATERAL.
9. LARGEST PIPE DIAMETER SHALL GOVERN THE WIDTH OF MANHOLES.



TOP SLAB DETAIL

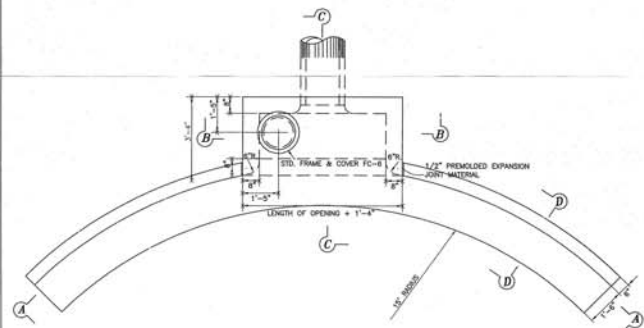


3 JUNCTION BOX DETAIL

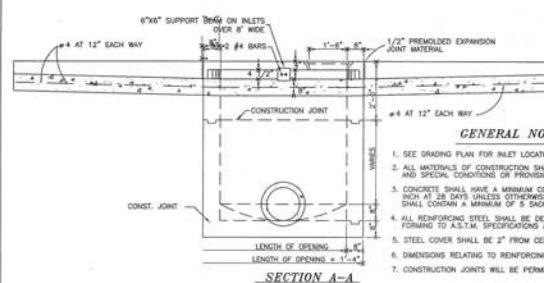


4 PIPE OUTLET AT DETENTION POND DETAIL

NOTES:
1) SEE SHEET 2.0 "GRADING PLAN" FOR LOCATION.



PLAN



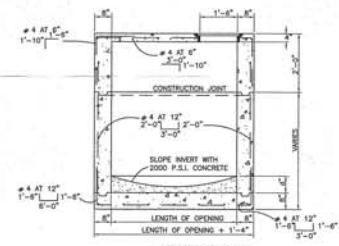
SECTION A-A

2 STANDARD CURB INLET

NTS

GENERAL NOTES

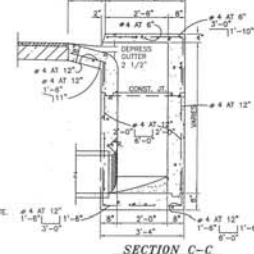
1. SEE GRADING PLAN FOR INLET LOCATION AND ELEVATIONS.
2. ALL MATERIALS OF CONSTRUCTION SHALL CONFORM TO THE STANDARD SPECIFICATIONS AND SPECIAL CONDITIONS OR PROVISIONS AND LATEST REVISIONS THEREOF.
3. CONCRETE SHALL HAVE A MINIMUM COMPRESSIVE STRENGTH OF 3000 POUNDS PER SQUARE INCH AT 28 DAYS UNLESS OTHERWISE NOTED. DESIGN MIX FOR 3000 POUND CONCRETE SHALL CONTAIN A MINIMUM OF 5 BAGS OF CEMENT PER CUBIC YARD.
4. ALL REINFORCING STEEL SHALL BE DEFORMED NEW BULLET INTERMEDIATE GRADE CONFORMING TO A.S.T.M. SPECIFICATIONS A-15-SET AND A-305-SET AND LATEST REVISIONS.
5. STEEL COVER SHALL BE 2" FROM CENTER OF OUTSIDE LAYER OF STEEL TO FACE OF CONCRETE.
6. DIMENSIONS RELATING TO REINFORCING STEEL SHALL BE TO CENTER OF BARS.
7. CONSTRUCTION JOINTS WILL BE PERMITTED AS SHOWN ON THE PLANS.



SECTION B-B



SECTION D-D



SECTION C-C

NO.	REVISIONS	DATE

CONSULTANTS:

ARCHITECT / ENGINEERS:

Drawing Title
Standard Drainage Details

Approved Project Director

Project Title

Waco VAMC

Date
April 2017

Project Number

Building Number

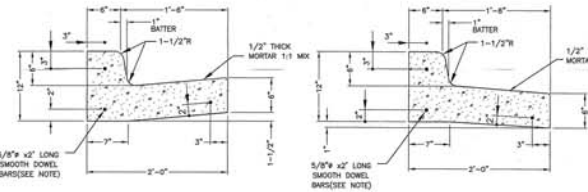
Drawing Number
CS9

Checked

Drawn

Office of
Construction and
Facilities
Management

Page 15 of 22



DIRECT FLOW

INDIRECT FLOW

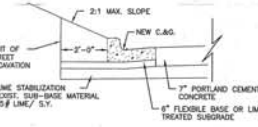
GENERAL NOTES

1. INSTALL 1/2" PREMOLDED EXPANSION JOINT MATERIAL AT 50' INTERVALS & AT BEGINNING & END OF ALL CURB RETURNS & DRIVE APPROACHES.
2. INSTALL 2" x 8" x 4" LONG SMOOTH DOWEL BARS AT ALL EXPANSION JOINTS & AT BEGINNING & END OF ALL CURB RETURNS. EXTEND BARS 12" INTO EACH SIDE OF JOINT & WRAP ONE END W/ 15' FELT, 15" LONG.
3. ALL CURB AND GUTTER TO BE 3,000 P.S.I. CONCRETE.

1 STANDARD CURB AND GUTTER
NTS

2 STREET SECTION
NTS

CONTRACTOR MUST FOLLOW GEOTECHNICAL DESIGN



GENERAL NOTES

1. LIME STABILIZED SUBGRADE WILL BE REQUIRED TO CURE A MINIMUM OF 30 DAYS PRIOR TO PLACING CEMENT STABILIZED BASE. CURB AND GUTTER PLACEMENT WILL BE PERMITTED DURING THIS CURING TIME.
2. BACKFILL MATERIAL BEHIND CURB AND GUTTER SHALL BE COMPACTED ADEQUATELY TO SUPPORT AND RETAIN LINE AND GRADE OF CURB AND GUTTER, AND PREVENT SETTLEMENT.
3. COMPACT TO STANDARD 95% STANDARD PROCTOR DENSITY.
4. H.M.A.C. (EXIST.) WILL BE SAVED FOR JOINT.
5. CONTRACTOR SHALL REFERENCE SURFACE ELEVATION PREPARED BY ALLIANCE GEOTECHNICAL GROUP OF AUSTIN PROJECT #A111-0801.

NOTE:

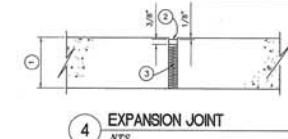
1"	0.0556 TN / SY
1 1/2"	0.0833 TN / SY
2"	0.1111 TN / SY
3"	0.1667 TN / SY

PAVING GUIDELINES:

1. THE FOLLOWING NOTES ARE A SUMMARY OF PRELIMINARY DESIGN PRESENTED IN THE SUBSURFACE EXPLORATION & GEOTECHNICAL EVALUATION ("REPORT") PREPARED BY ALLIANCE GEOTECHNICAL GROUP OF AUSTIN PROJECT #A111-0801. CONTRACTOR SHALL REFERENCE THE REPORT FOR A FULL TEXT. CONTRACTOR SHALL FOLLOW ALL PAVEMENT RECOMMENDATIONS IN THE REPORT UNLESS NOTED OTHERWISE. LOCATED IN SPECIFICATION APPENDIX.
2. ROAD PAVEMENTS SHALL BE DESIGNED WITH A MODULUS OF SUBGRADE REACTION VALUE OF 100 PCL.
3. TOP 6" OF PAVEMENT SUBGRADE SHALL BE TREATED WITH LIME OR A MINIMUM 4" LAYER OF FLEXIBLE BASE MAY BE PLACED, TO PROVIDE A UNIFORM WORKING PLATFORM AND INCREASE THE SUBGRADE SUPPORT CAPACITY. THE EXPOSED SUBGRADE SHALL BE PROOF ROLLED AND REMOVED AS RECOMMENDED IN THE FULL PLACEMENT AND COMPACTION SECTION OF THE "REPORT".
4. APPLY HYDRATED LIME AT AN APPROXIMATE APPLICATION RATE OF 27 POUNDS PER SQUARE YARD FOR A 4" COMPACTED LAYER (CORRELATES TO 48 BY DRY UNIT WEIGHT). COMPACT THE CURED, WELL-MIXED MATERIAL TO A MINIMUM OF 95% OF AOM 2 888 (STANDARD PROCTOR) DENSITY AT A MOISTURE CONTENT BETWEEN OPTIMUM AND 2% ABOVE OPTIMUM.
5. CONCRETE SHALL HAVE A MINIMUM FLEXURAL STRENGTH OF 800 PSI AT 28 DAYS THAT CORRESPONDS TO ROUGHLY 3,000 PSI COMPRESSIVE STRENGTH. CONCRETE SHALL BE STEEL REINFORCED AND INCLUDE JOINTS TO CONTROL THE FORMATION OF TEMPERATURE AND SHRINKAGE RELATED CRACKS. CONCRETE SHALL INCLUDE 4# MIN. TO 8# MAX. AIR ENTRAINMENT.
6. CONCRETE SHALL BE REINFORCED WITH GRADE 60, #4 DEFORMED BARS SPACED AT 15" O.C. EACH WAY. THE REBAR SHALL BE PLACED IN THE MIDDLE OF THE PAVEMENT. MAXIMUM JOINT SPACING SHALL BE 15'. CONSTRUCTION JOINTS MAY BE FORMED USING REDWOOD EXPANSION JOINTS OR SAWCUT CONTROL JOINTS CUT TO A DEPTH OF 1/4 THE THICKNESS OF THE SLAB WITH A MAXIMUM THICKNESS OF 1 1/2 INCHES. SAWCUTTING SHALL BE CONDUCTED WITHIN 4 TO 12 HOURS OF SETTING.
7. CONTRACTOR SHALL CHECK SUBGRADE FOR DISTURBANCE, DECOMPOSITION, AND/OR SETTING OF THE SUBGRADE WITHIN 2 DAYS PRIOR TO COMMENCEMENT OF PAVING OPERATIONS. IF ANY SIGNIFICANT EVENT, SUCH AS PRECIPITATION, OCCURS AFTER PREPAVING, THE SUBGRADE SHALL BE IN ITS FINISHED FORM AT THE TIME OF THE FINAL RIDE.
8. ALL PAVEMENTS SHALL BE SLOPED TO PROVIDE RAPID SURFACE DRAINAGE. WATER SHALL NOT BE ALLOWED TO POND ON OR ADJACENT TO THE PAVEMENT.

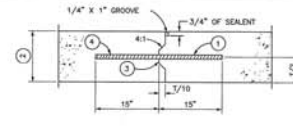
6 ALTERNATE TRANSVERSE CONTRACTION JOINT
NTS

- NOTES:**
1. (1) THICKNESS OF PAVEMENT, SEE TYPICAL PAVEMENT SECTION.
 2. POURED JOINT MATERIAL.
 3. 1/2" PREMOLDED JOINT MATERIAL.



4 EXPANSION JOINT
NTS

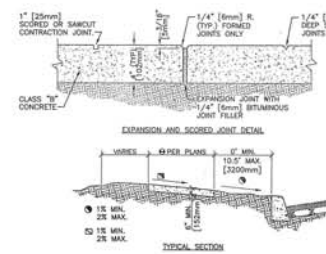
- NOTES:**
1. BACKER ROD OF OPEN OR CLOSED CELL POLYURETHANE STRAND AS APPROVED.
 2. 1/4" x 1/2" LONGITUDINAL 1/4" TRANSVERSE MAY BE 1/4" SAWCUT FOR ITS FULL DEPTH WITH JOINT MATERIAL AND BACKER ROD AT SAME DEPTH.
 3. POURED JOINT MATERIAL.
 4. AIR.
 5. (1) THICKNESS OF PAVEMENT, SEE TYPICAL PAVEMENT SECTION.



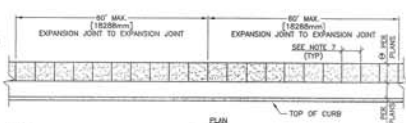
5 CONSTRUCTION JOINT
NTS

- NOTES:**
1. BARS SHALL BE DEFORMED REINFORING BARS, NO. 4.
 2. WHEN THICKNESS < 8" & NO. 5 WHEN THICKNESS > 8".
 3. (1) THICKNESS OF PAVEMENT, SEE TYPICAL PAVEMENT SECTION.
 4. 30' ON CENTERS LONGITUDINAL, 15' ON CENTERS TRANSVERSE.

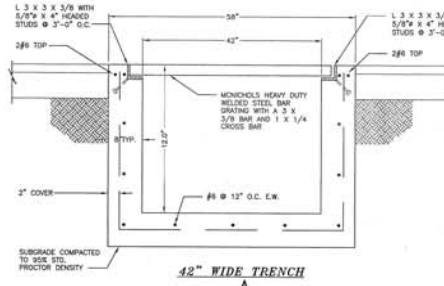
3 6.0' CURB CUT DETAIL
NTS



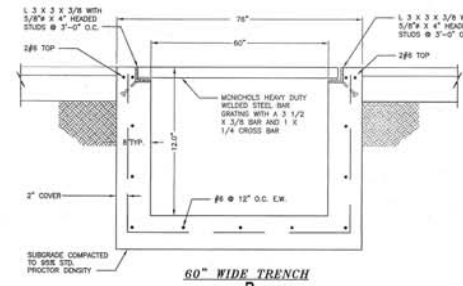
7 CONCRETE SIDEWALK
NTS



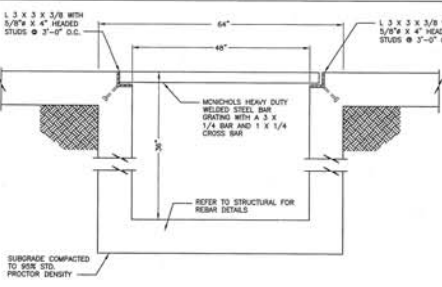
- NOTES:**
1. EXPANSION JOINTS SHALL BE LOCATED WHERE SIDEWALK ABUTS CONCRETE DRIVEWAYS, CURB OR OTHER ADJACENT STRUCTURES.
 2. ONE-HALF INCH BITUMINOUS JOINT FILLER SHALL BE INSTALLED AT EXPANSION JOINT LOCATIONS AND SHALL EXTEND THE FULL DEPTH OF THE CONCRETE.
 3. 1" DEEP CONTRACTION JOINTS SHALL BE PLACED AT INTERVALS OF APPROXIMATELY 15' [4572mm] OR AT A SPACING THAT MATCHES THE ADJACENT CURB.
 4. FORMED CONTRACTION JOINTS SHALL BE FINISHED WITH A TOOL HAVING A 1/4" [6mm] RADIUS.
 5. SCORED JOINTS SHALL BE 1/4" [6mm] DEEP AND PLACED AT THE SPACING INDICATED FOR THE WIDTH OF SIDEWALK OR MATCH SCORED JOINTS OF ADJACENT CURB.
 6. CONCRETE SHALL BE FINISHED BY MEANS OF A FLOUT, STEEL TROWELLED AND BROOMED WITH A FINE BRUSH IN A TRANSVERSE DIRECTION.
 7. 1/4" DEEP SCORED JOINTS (TYP) SPACED AT 6' [1829mm] OR EQUAL TO SIDEWALK WIDTH.



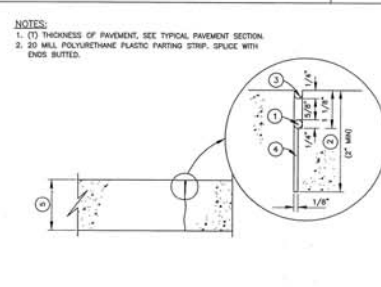
42" WIDE TRENCH
A



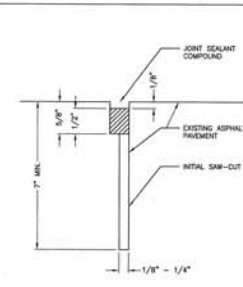
60" WIDE TRENCH
B



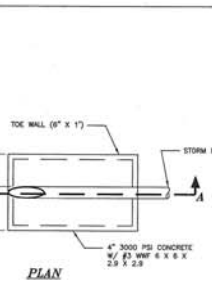
9 SUMP PIT CROSS SECTION
NTS



10 CONTRACTION JOINT
NTS



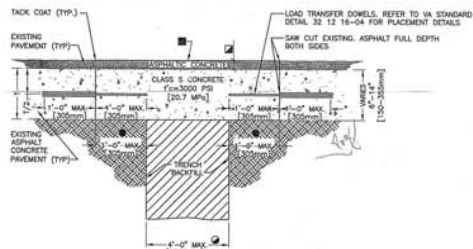
11 SAW CUT JOINT AT EXISTING ASPHALT
NTS



12 SAFETY END TREATMENT
NTS

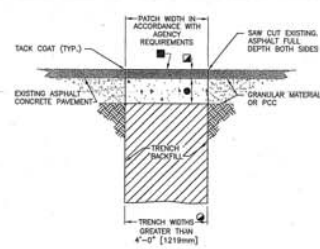
- NOTES:**
1. SEE SHEET 1.0 "POST-DRAIN PLAN" FOR LOCATION.

REVISIONS NO. DESCRIPTION DATE		CONSULTANTS:	ARCHITECT / ENGINEERS:	Drawing Title Standard Pavement Detail	Project Title Waco VAMC	Project Number CS10	Office of Construction and Facilities Management
Approved: Project Director				Location Waco VAMC	Drawing Number CS10		
Date April 2017		Checked <input type="checkbox"/>	Drawn <input type="checkbox"/>	Page 16 of 22			



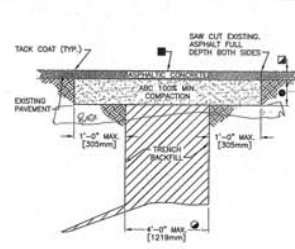
- FOR TRENCH WIDTHS EXCEEDING 4' (1219mm) DELETE LOAD TRANSFER DOWELS.
- 2" (50mm) MINIMUM OR THICKNESS OF EXISTING PAVEMENT WHICHEVER IS GREATER.
- BITUMINOUS SURFACE TREATMENT (CHIPSAL) REQUIRED ONLY FOR LONGITUDINAL TRENCHES WITH WIDTHS GREATER THAN 6' (1829mm).
- REFER TO NOTE 13 ON VA STANDARD DETAIL 32 12 18-04 "UTILITY TRENCH PAVEMENT PATCH NOTES" FOR ADDITIONAL INFORMATION.

1 TYPE 3 UTILITY TRENCH PATCH
NTS



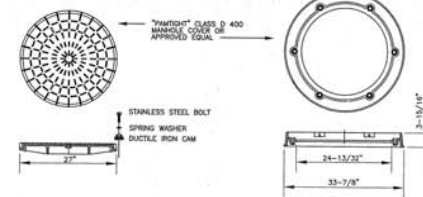
- FOR TRENCH WIDTHS 4' (1219mm) OR LESS REFER TO VA STANDARD DETAIL 32 12 18-01 "TYPE 1 UTILITY TRENCH PATCH". FOR TRENCH WHERE PORTLAND CEMENT CONCRETE (PCC) PAVEMENT EXISTS, REFER TO 32 12 18-03 "TYPE 3 UTILITY TRENCH PATCH".
- 2" (50mm) MINIMUM OR THICKNESS OF EXISTING PAVEMENT WHICHEVER IS GREATER.
- BITUMINOUS SURFACE TREATMENT (CHIPSAL) REQUIRED ONLY FOR LONGITUDINAL TRENCHES WITH WIDTHS GREATER THAN 6' (1829mm).
- 4" (100mm) MINIMUM ABC OR THICKNESS OF EXISTING GRANULAR BASE COURSE MATERIALS (E.G. ABC & SELECT MATERIAL) WHICHEVER IS GREATER.
- PORTLAND CEMENT CONCRETE (PCC) THICKNESS EQUAL TO EXISTING.

2 TYPE 2 UTILITY TRENCH PATCH
NTS

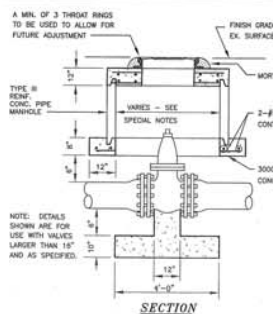


- FOR TRENCH WIDTHS EXCEEDING 4' (1219mm) REFER TO VA STANDARD DETAIL 32 12 18-02 "TYPE 2 UTILITY TRENCH PATCH". FOR TRENCH WHERE PORTLAND CEMENT CONCRETE (PCC) PAVEMENT EXISTS, REFER TO 32 12 18-03 "TYPE 3 UTILITY TRENCH PATCH".
- 2" (50mm) MINIMUM OR THICKNESS OF EXISTING PAVEMENT WHICHEVER IS GREATER.
- BITUMINOUS SURFACE TREATMENT (CHIPSAL) REQUIRED ONLY FOR LONGITUDINAL TRENCHES WITH WIDTHS GREATER THAN 6' (1829mm).
- 4" (100mm) MINIMUM ABC OR THICKNESS OF EXISTING GRANULAR BASE COURSE MATERIALS (E.G. ABC & SELECT MATERIAL) WHICHEVER IS GREATER.

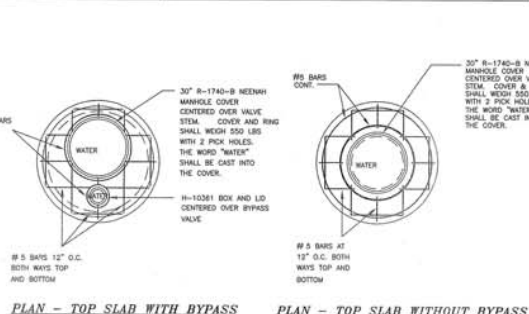
3 TYPE 1 UTILITY TRENCH PATCH
NTS



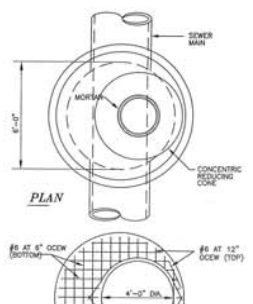
4 WATERTIGHT/AIRTIGHT MANHOLE RING AND COVER
NTS



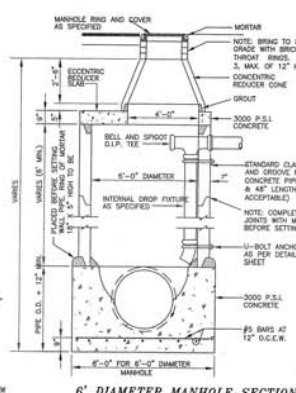
5 LARGE VERTICAL GATE VALVE BOX INSTALLATION DETAILS
NTS



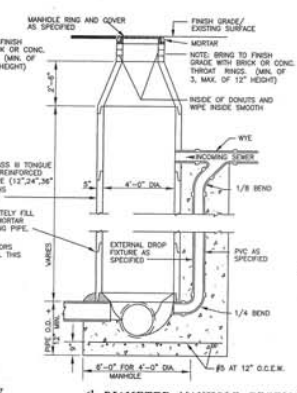
PLAN - TOP SLAB WITH BYPASS
PLAN - TOP SLAB WITHOUT BYPASS



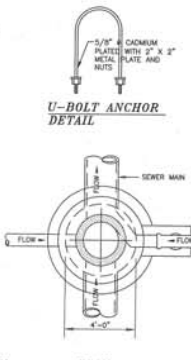
PLAN - ECCENTRIC REDUCER SLAB



6' DIAMETER MANHOLE SECTION

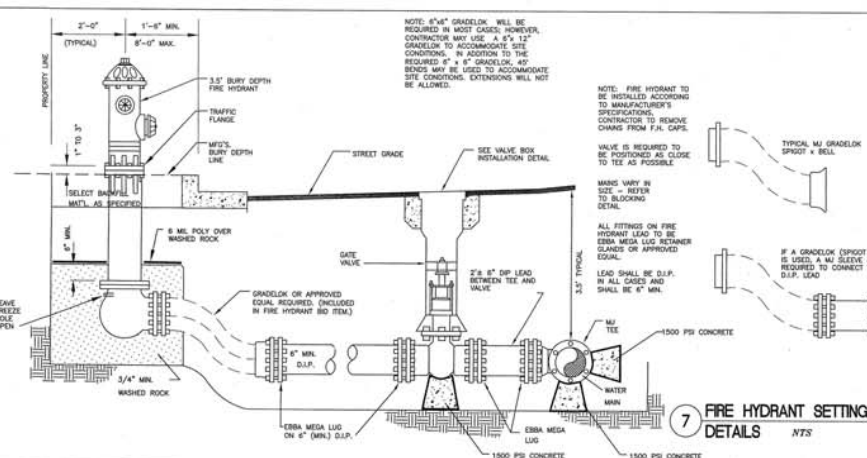


4' DIAMETER MANHOLE SECTION



U-BOLT ANCHOR DETAIL

6 4' AND 6' PRECAST CONCRETE MANHOLES
NTS (WITH POURED IN PLACE BASE)



7 FIRE HYDRANT SETTING DETAILS
NTS

REVISIONS		CONSULTANTS:		ARCHITECT / ENGINEERS:		Drawing Title		Project Title		Project Number		Office of Construction and Facilities Management
NO.	DESCRIPTION	DATE				Standard Utilities Details	Waco VAMC	Building Number	Drawing Number			
						Approved: Project Director			CS11			

DRAWING
W-CS-0.04

DRAWING
W-CS-0.05

DRAWING
W-CS-0.02

DRAWING
W-CS-0.03

ALT #3

ALT #2

ALT #1

TASK #7

TASK 5

TASK 6

1 CAMPUS SITE PLAN
SCALE: 1"=100'-0"

COVERSHEET

W-CS-0.01 CAMPUS SITE PLAN STORM SEWER LAYOUT
W-CS-0.02 ENLARGED SITE PLAN - NE
W-CS-0.03 ENLARGED SITE PLAN - NW
W-CS-0.04 ENLARGED SITE PLAN - SE
W-CS-0.05 ENLARGED SITE PLAN - SW
W-CS-0.06 RECORD UTILITY DRAWING SITE INDEX
W-CS-0.07 RECORD UTILITY PLAN
W-CS-0.08 RECORD UTILITY PLAN
W-CS-0.09 RECORD UTILITY PLAN
W-CS-0.10 RECORD UTILITY PLAN
W-CS-0.11 RECORD UTILITY PLAN
W-CS-0.12 RECORD UTILITY PLAN
W-CS-0.13 RECORD UTILITY PLAN
W-CS-0.14 RECORD UTILITY PLAN
W-CS-0.15 RECORD UTILITY PLAN
W-CS-0.16 RECORD UTILITY PLAN
W-CS-0.17 RECORD UTILITY PLAN
W-CS-0.18 RECORD UTILITY PLAN

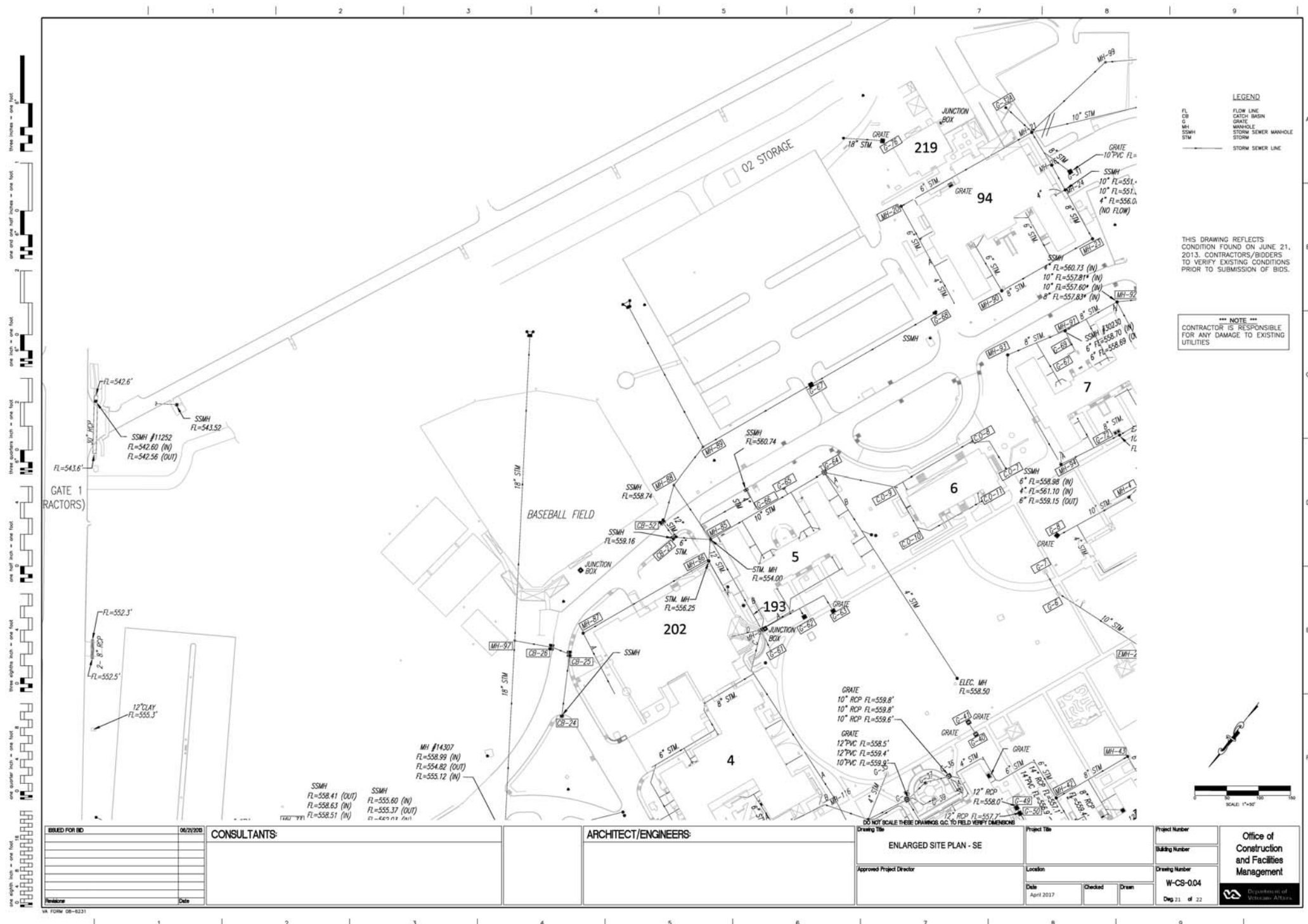
2 DRAWING INDEX
SCALE: NTS

*** NOTE ***
CONTRACTOR IS RESPONSIBLE
FOR ANY DAMAGE TO EXISTING
UTILITIES

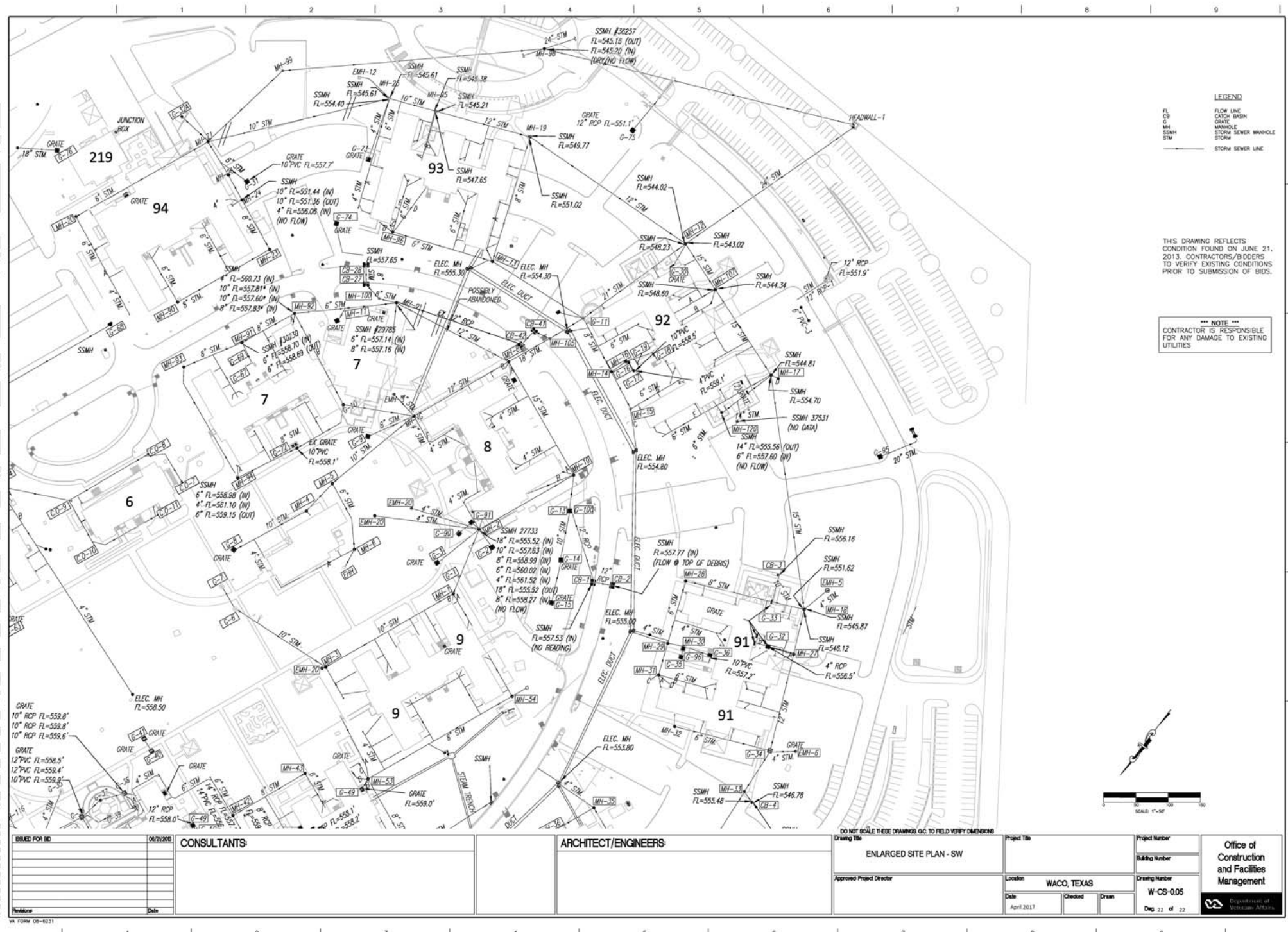


ISSUED FOR BID		06/29/2017	CONSULTANTS:		ARCHITECT/ENGINEERS:		DO NOT SCALE THESE DRAWINGS. G.C. TO FIELD VERIFY DIMENSIONS		Project Title		Project Number		Office of Construction and Facilities Management	
									W-CS-0.01 Campus Site Plan Storm Sewer Layout		Replace Site Water and Sewer System, Waco		Building Number	
									Approved Project Director		Location		Drawing Number	
											WACO, TEXAS			
											Date		Checked	
											April 2017		Drawn	
													Dep. 18 of 22	

VA FORM 08-6231



one eighth inch = one foot
 one half inch = one foot
 three quarters inch = one foot
 one inch = one foot
 one and one half inches = one foot
 two inches = one foot
 three inches = one foot
 four inches = one foot
 five inches = one foot
 six inches = one foot
 seven inches = one foot
 eight inches = one foot
 nine inches = one foot
 ten inches = one foot
 eleven inches = one foot
 twelve inches = one foot
 thirteen inches = one foot
 fourteen inches = one foot
 fifteen inches = one foot
 sixteen inches = one foot
 seventeen inches = one foot
 eighteen inches = one foot
 nineteen inches = one foot
 twenty inches = one foot
 twenty one inches = one foot
 twenty two inches = one foot
 twenty three inches = one foot
 twenty four inches = one foot
 twenty five inches = one foot
 twenty six inches = one foot
 twenty seven inches = one foot
 twenty eight inches = one foot
 twenty nine inches = one foot
 thirty inches = one foot
 thirty one inches = one foot
 thirty two inches = one foot
 thirty three inches = one foot
 thirty four inches = one foot
 thirty five inches = one foot
 thirty six inches = one foot
 thirty seven inches = one foot
 thirty eight inches = one foot
 thirty nine inches = one foot
 forty inches = one foot
 forty one inches = one foot
 forty two inches = one foot
 forty three inches = one foot
 forty four inches = one foot
 forty five inches = one foot
 forty six inches = one foot
 forty seven inches = one foot
 forty eight inches = one foot
 forty nine inches = one foot
 fifty inches = one foot
 fifty one inches = one foot
 fifty two inches = one foot
 fifty three inches = one foot
 fifty four inches = one foot
 fifty five inches = one foot
 fifty six inches = one foot
 fifty seven inches = one foot
 fifty eight inches = one foot
 fifty nine inches = one foot
 sixty inches = one foot
 sixty one inches = one foot
 sixty two inches = one foot
 sixty three inches = one foot
 sixty four inches = one foot
 sixty five inches = one foot
 sixty six inches = one foot
 sixty seven inches = one foot
 sixty eight inches = one foot
 sixty nine inches = one foot
 seventy inches = one foot
 seventy one inches = one foot
 seventy two inches = one foot
 seventy three inches = one foot
 seventy four inches = one foot
 seventy five inches = one foot
 seventy six inches = one foot
 seventy seven inches = one foot
 seventy eight inches = one foot
 seventy nine inches = one foot
 eighty inches = one foot
 eighty one inches = one foot
 eighty two inches = one foot
 eighty three inches = one foot
 eighty four inches = one foot
 eighty five inches = one foot
 eighty six inches = one foot
 eighty seven inches = one foot
 eighty eight inches = one foot
 eighty nine inches = one foot
 ninety inches = one foot
 ninety one inches = one foot
 ninety two inches = one foot
 ninety three inches = one foot
 ninety four inches = one foot
 ninety five inches = one foot
 ninety six inches = one foot
 ninety seven inches = one foot
 ninety eight inches = one foot
 ninety nine inches = one foot
 one hundred inches = one foot



DESIGNED FOR: DATE: 06/29/2017 CONSULTANTS: ARCHITECT/ENGINEERS: ENLARGED SITE PLAN - SW Approved Project Director: Location: WACO, TEXAS Date: April 2017 Checked: Drawn: Project Number: Building Number: Drawing Number: W-CO-005 Page 22 of 22	Office of Construction and Facilities Management Department of Transportation
---	--