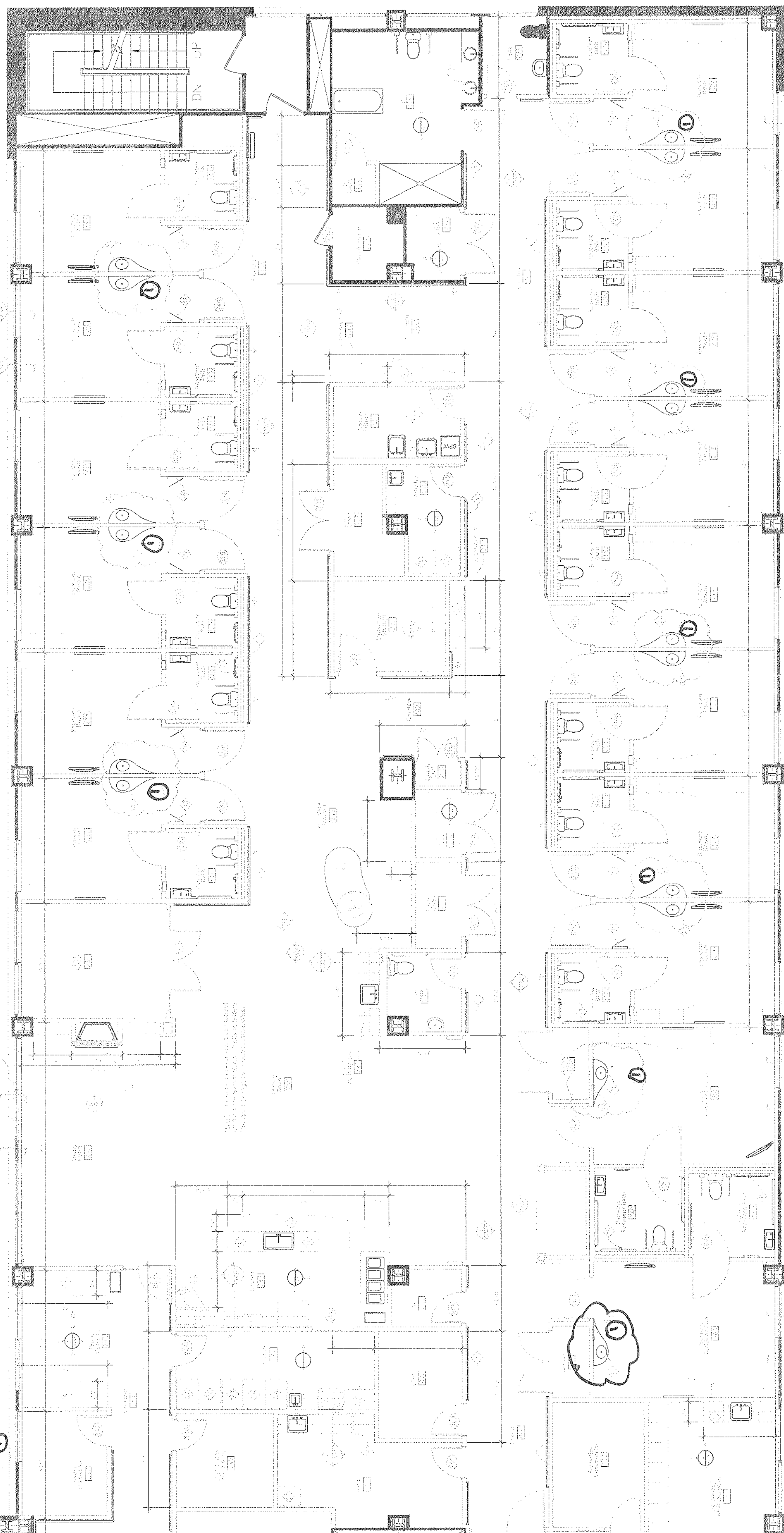


- | Question | Answer | Reference |
|---|--|-----------|
| 1. What is the purpose of the study? | To investigate the effect of the new curriculum on the learning of English in primary schools. | 1.1 |
| 2. What is the research design? | Quasi-experimental design. | 1.2 |
| 3. What is the sample size? | 100 primary school pupils. | 1.3 |
| 4. What is the data collection instrument? | English Language Test. | 1.4 |
| 5. What is the data analysis technique? | Descriptive statistics. | 1.5 |
| 6. What is the conclusion? | The new curriculum has a positive effect on the learning of English in primary schools. | 1.6 |
| 7. What are the limitations of the study? | Small sample size, lack of control group. | 1.7 |
| 8. What are the implications of the study? | The study suggests that the new curriculum should be implemented in all primary schools. | 1.8 |
| 9. What are the future research directions? | Large-scale study, longitudinal study. | 1.9 |
| 10. What is the overall summary? | The study shows that the new curriculum has a positive effect on the learning of English in primary schools. | 1.10 |

NOTE #1 – DELETE SINKS AND ASSOCIATED WASTE, WATER AND VENT LINES FROM PATIENT BEDROOMS ONLY. SINKS WILL REMAIN IN PATIENT PRIVATE BATHROOMS.

[illegible][illegible]