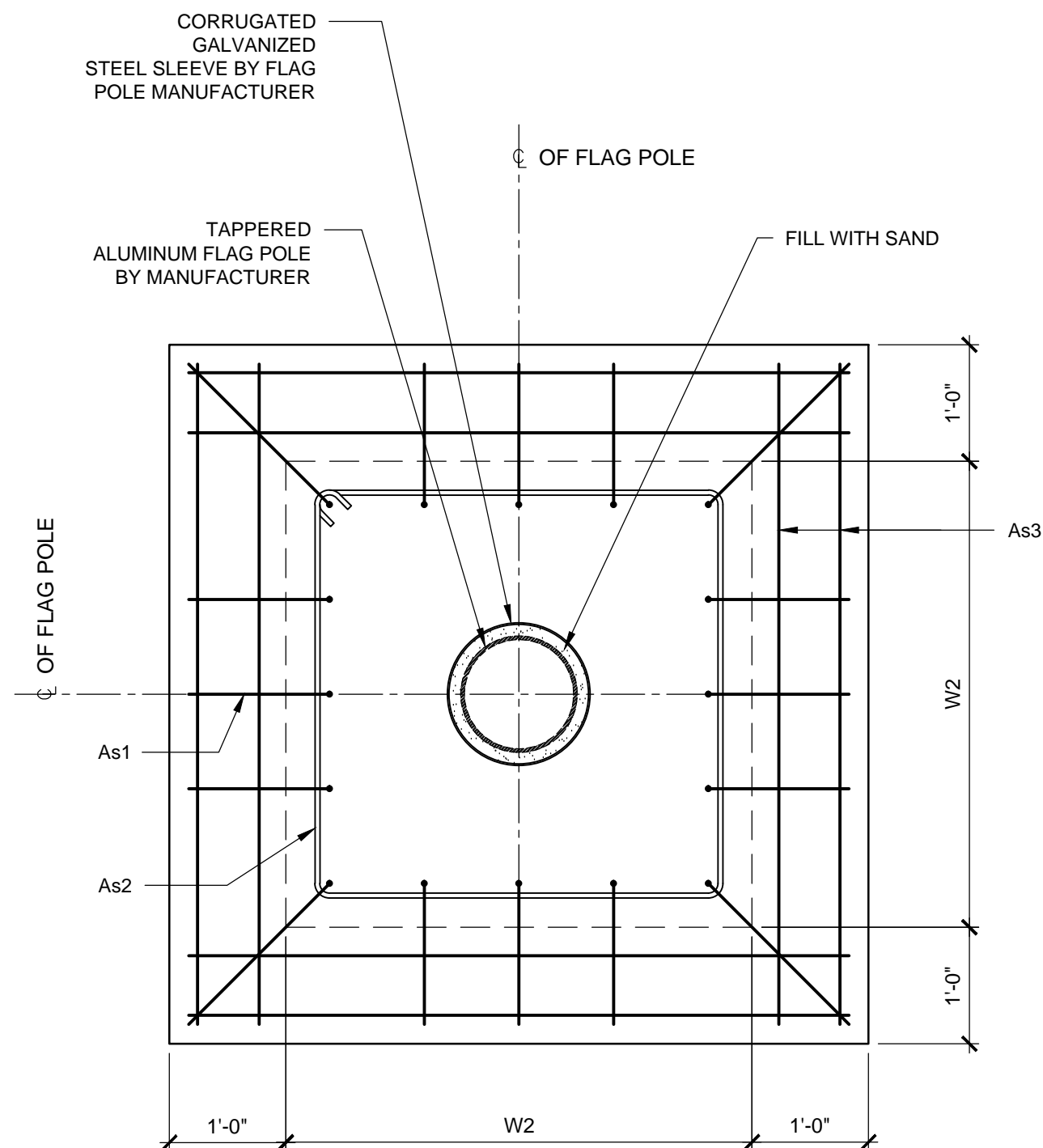
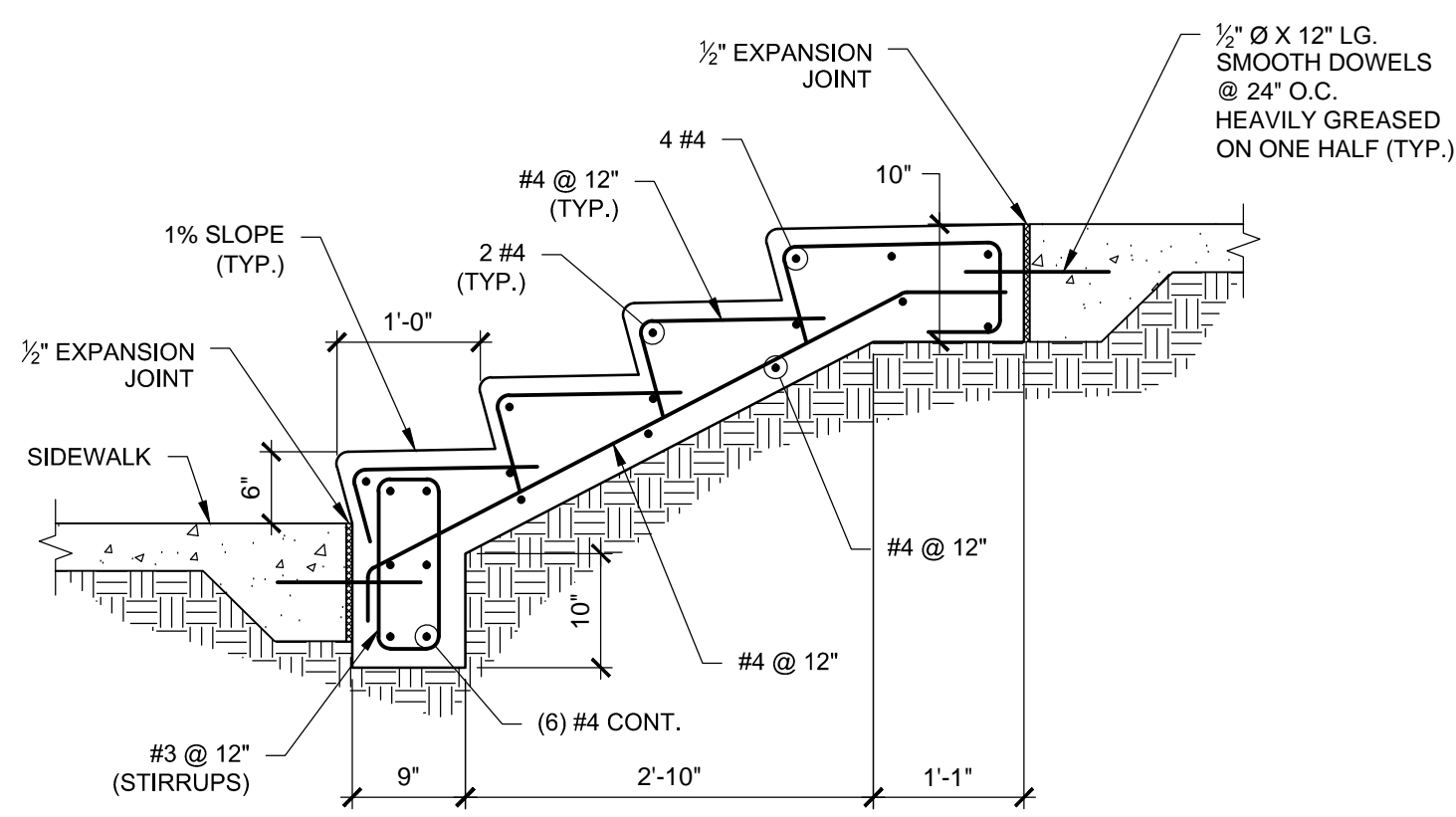


C1 FLAG POLE FOUNDATION DETAIL
SCALE: 3/4" = 1'-0"

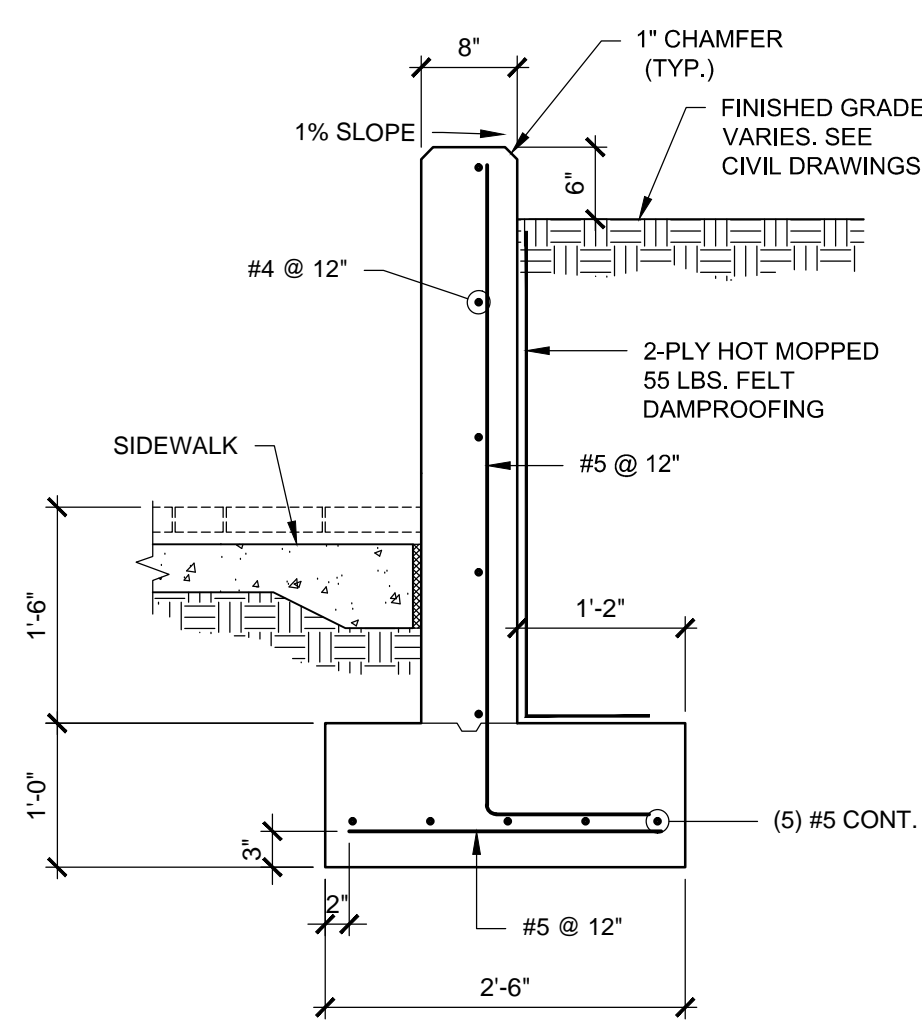


SECTION A-A

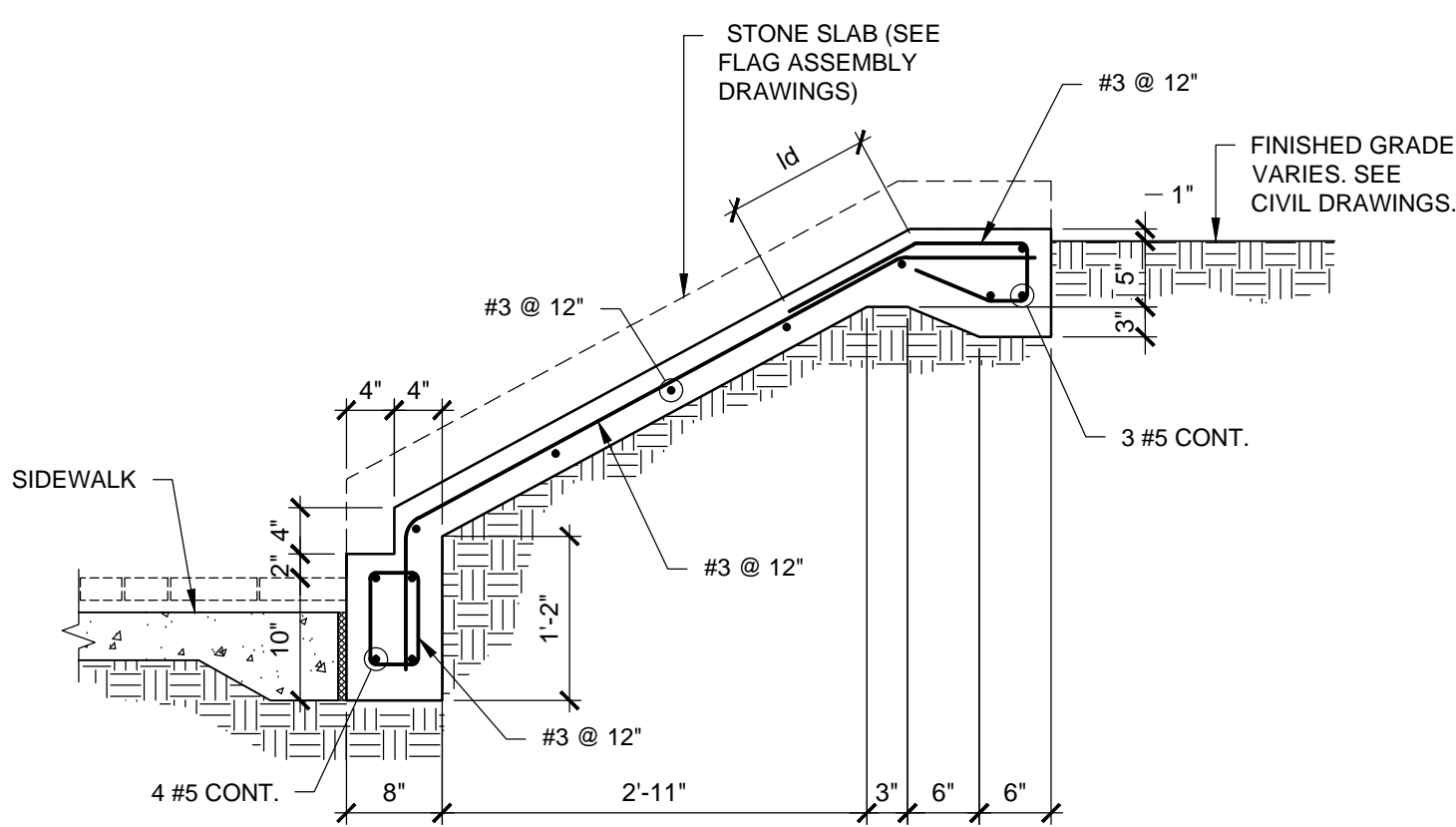
FLAG POLE FOUNDATION SCHEDULE						
FLAG POLE HEIGHT ABOVE GROUND	W1	W2	D	As1 ("U" TYPE BARS)	As2 (STIRRUPS)	As3 (STRAIGHT BARS)
25'-0"	2'-6"	3'-0"	4'-0"	12 #6	4 #4	8 #5
30'-0"	2'-9"	3'-3"	4'-4"	12 #6	4 #4	8 #5
70'-0"	3'-6"	4'-0"	6'-10"	16 #6	6 #4	8 #5



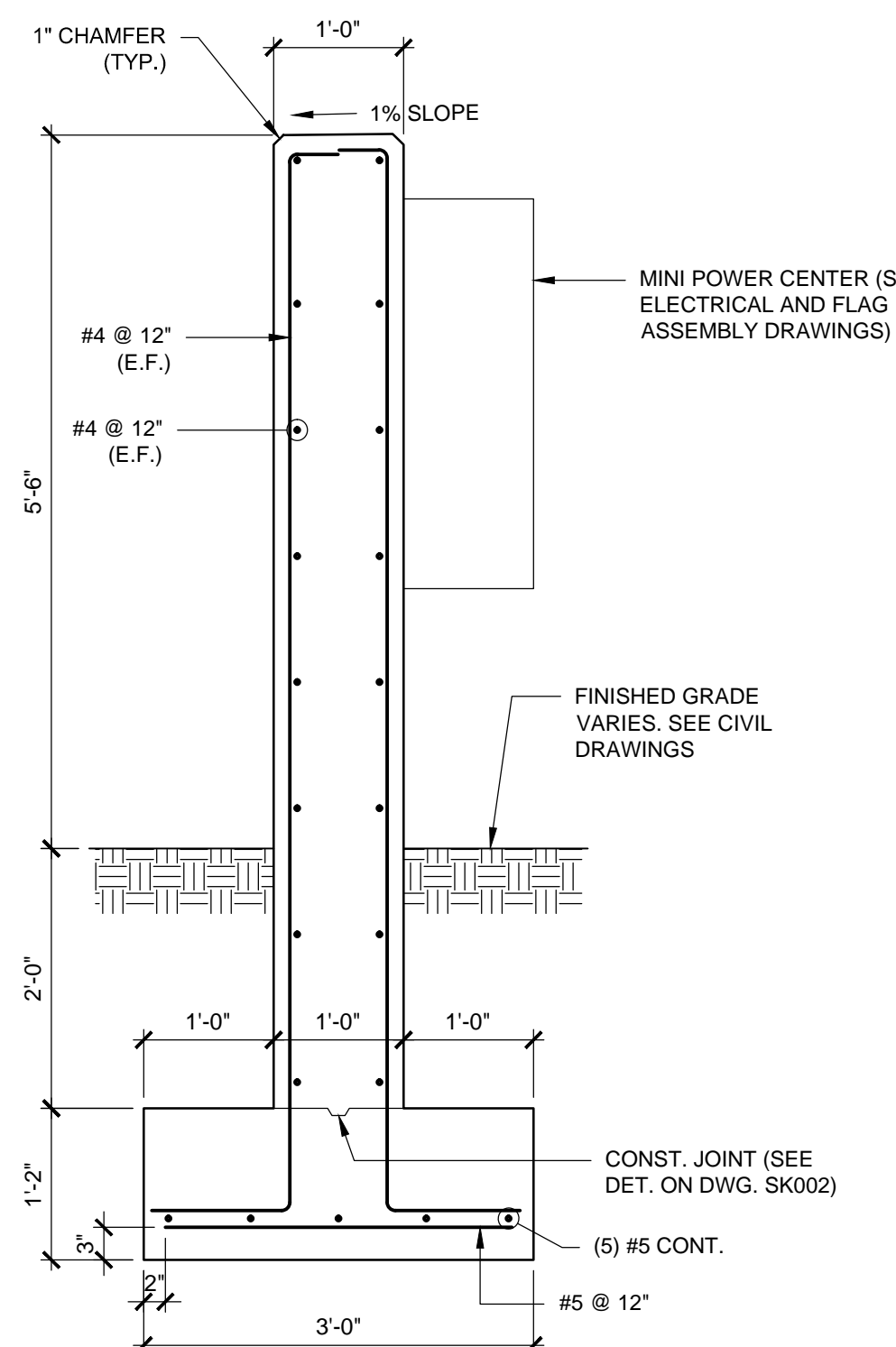
C5 FLAG ASSEMBLY STAIRS
SCALE: 3/4" = 1'-0"



E1 FLAG ASSEMBLY PLANTER WALL
SCALE: 3/4" = 1'-0"



E2 FLAG ASSEMBLY SERVICE SEAL WALL
SCALE: 3/4" = 1'-0"



E7 MINI POWER CENTER WALL
SCALE: 3/4" = 1'-0"

- NOTES:
1. MANUFACTURER ESTABLISHED ONLY AS DESIGN BASIS. SEE STRUCTURAL GENERAL NOTE 19 ON DWG. SK001.
 2. FOUNDATIONS AND SLABS ON GROUND TO BE PLACED OVER COMPACTED STRUCTURAL FILL AT LEAST 3 FEET THICK BELOW BOTTOM OF FOUNDATION. SEE FOUNDATION NOTES ON DRAWING SK001 FOR COMPLETE REQUIREMENTS.

Revisions		Date	
CONSULTANTS:			
PROFESSIONAL SEAL			
ARCHITECT/ENGINEERS:			
BID DOCUMENTS SUBMISSION			
Drawing Title		Project Title	
FLAG ASSEMBLY STRUCTURAL DETAILS		"PUERTO RICO NATIONAL CEMETERY REPLACEMENT" PHASE 1 DEVELOPMENT	
Approved PROJECT MANAGER, BRYAN J. BODNER, PHONE: (202) 632-5722		Location	
Approved CONTRACTING OFFICER, TERENCE CRAWLEY, PHONE: (202) 382-2766		MOROVIS, PUERTO RICO	
Date		Checked	
FEBRUARY 28, 2017		JM	
Drawn		Dwg. of	
JQ		CS501F	
Office of Construction and Facilities Management		Department of Veterans Affairs	