

three inches = one foot

one and one half inches = one foot

one inch = one foot

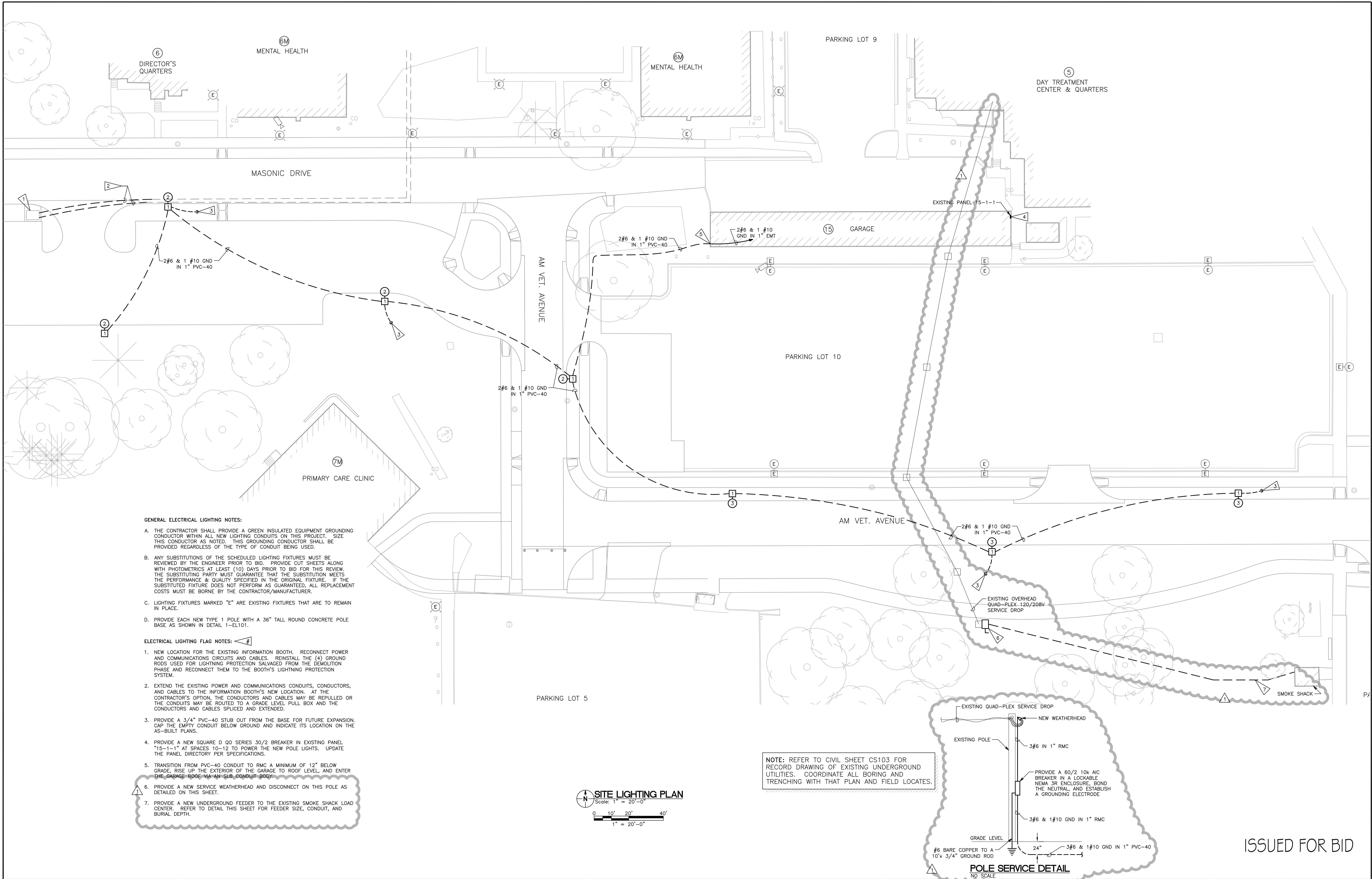
three quarters inch = one foot

one half inch = one foot

three eighths inch = one foot

one quarter inch = one foot

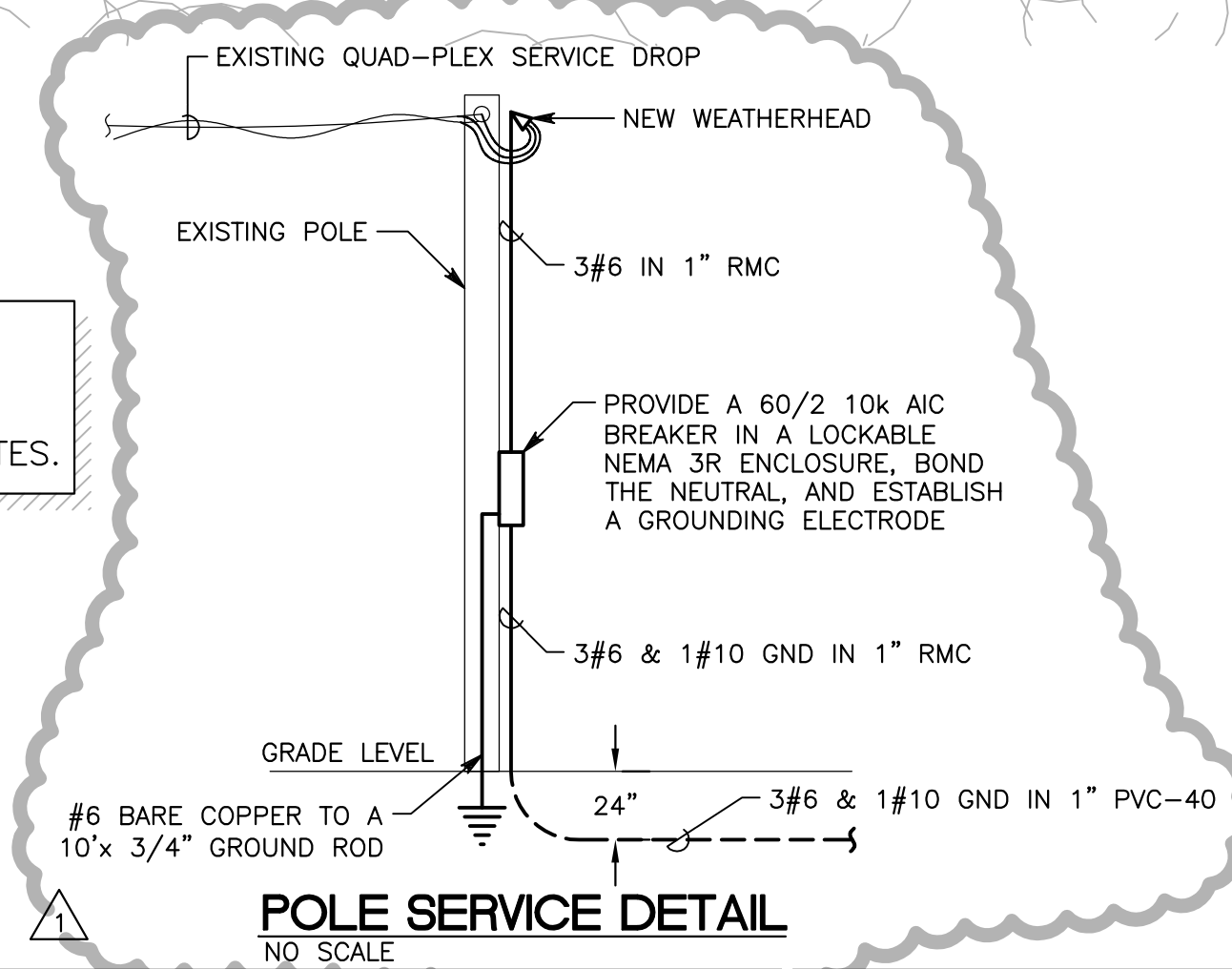
one eighth inch = one foot



- GENERAL ELECTRICAL LIGHTING NOTES:**
- A. THE CONTRACTOR SHALL PROVIDE A GREEN INSULATED EQUIPMENT GROUNDING CONDUCTOR WITHIN ALL NEW LIGHTING CONDUITS ON THIS PROJECT. SIZE THIS CONDUCTOR AS NOTED. THIS GROUNDING CONDUCTOR SHALL BE PROVIDED REGARDLESS OF THE TYPE OF CONDUIT BEING USED.
 - B. ANY SUBSTITUTIONS OF THE SCHEDULED LIGHTING FIXTURES MUST BE REVIEWED BY THE ENGINEER PRIOR TO BID. PROVIDE CUT SHEETS ALONG WITH PHOTOMETRICS AT LEAST (10) DAYS PRIOR TO BID FOR THIS REVIEW. THE SUBSTITUTING PARTY MUST GUARANTEE THAT THE SUBSTITUTION MEETS THE PERFORMANCE & QUALITY SPECIFIED IN THE ORIGINAL FIXTURE. IF THE SUBSTITUTED FIXTURE DOES NOT PERFORM AS GUARANTEED, ALL REPLACEMENT COSTS MUST BE BORNE BY THE CONTRACTOR/MANUFACTURER.
 - C. LIGHTING FIXTURES MARKED "E" ARE EXISTING FIXTURES THAT ARE TO REMAIN IN PLACE.
 - D. PROVIDE EACH NEW TYPE 1 POLE WITH A 36" TALL ROUND CONCRETE POLE BASE AS SHOWN IN DETAIL 1-ELT01.
- ELECTRICAL LIGHTING FLAG NOTES:**
- 1. NEW LOCATION FOR THE EXISTING INFORMATION BOOTH. RECONNECT POWER AND COMMUNICATIONS CIRCUITS AND CABLES. REINSTALL THE (4) GROUND RODS USED FOR LIGHTNING PROTECTION SALVAGED FROM THE DEMOLITION PHASE AND RECONNECT THEM TO THE BOOTH'S LIGHTNING PROTECTION SYSTEM.
 - 2. EXTEND THE EXISTING POWER AND COMMUNICATIONS CONDUITS, CONDUCTORS, AND CABLES TO THE INFORMATION BOOTH'S NEW LOCATION. AT THE CONTRACTOR'S OPTION, THE CONDUCTORS AND CABLES MAY BE REPULED OR THE CONDUITS MAY BE ROUTED TO A GRADE LEVEL PULL BOX AND THE CONDUCTORS AND CABLES SPLICED AND EXTENDED.
 - 3. PROVIDE A 3/4" PVC-40 STUB OUT FROM THE BASE FOR FUTURE EXPANSION. CAP THE EMPTY CONDUIT BELOW GROUND AND INDICATE ITS LOCATION ON THE AS-BUILT PLANS.
 - 4. PROVIDE A NEW SQUARE D QO SERIES 30/2 BREAKER IN EXISTING PANEL "15-1-1" AT SPACES 10-12 TO POWER THE NEW POLE LIGHTS. UPDATE THE PANEL DIRECTORY PER SPECIFICATIONS.
 - 5. TRANSITION FROM PVC-40 CONDUIT TO RMC A MINIMUM OF 12" BELOW GRADE, RISE UP THE EXTERIOR OF THE GARAGE TO ROOF LEVEL, AND ENTER THE GARAGE ROOF VIA AN SLB CONDUIT BODY.
 - 6. PROVIDE A NEW SERVICE WEATHERHEAD AND DISCONNECT ON THIS POLE AS DETAILED ON THIS SHEET.
 - 7. PROVIDE A NEW UNDERGROUND FEEDER TO THE EXISTING SMOKE SHACK LOAD CENTER. REFER TO DETAIL THIS SHEET FOR FEEDER SIZE, CONDUIT, AND BURIAL DEPTH.

SITE LIGHTING PLAN
Scale: 1" = 20'-0"
0 10' 20' 40'
1" = 20'-0"

NOTE: REFER TO CIVIL SHEET CS103 FOR RECORD DRAWING OF EXISTING UNDERGROUND UTILITIES. COORDINATE ALL BORING AND TRENCHING WITH THAT PLAN AND FIELD LOCATES.



ISSUED FOR BID

AMENDMENT #1		06/01/2012		CONSULTANTS:		ARCHITECT/ENGINEERS:		Drawing Title		Project Title		Project Number		VACIHCS	
				LAMP RYNEARSON & ASSOCIATES		21 Delta Engineers		SITE LIGHTING PLAN		UPGRADE ROADWAY, PARKING PHASE I		636A6-11-301		3600 30th ST	
				14710 West Dodge Road, Suite 100 Omaha, Nebraska 68154-2027 www.LRA-Inc.com		21 Delta Engineers, LLC 3824 North 108th Street Omaha, Nebraska 68164 PH: (402) 496-4115 Fax: (402) 493-2744		Approved COTR		Location		Building Number		Des Moines, Iowa	
Revisions:		Date								DES MOINES VA MEDICAL CENTER		Drawing Number		Department of Veterans Affairs	
										Date		Checked		Dwg 23 of 24	
										MAY 7, 2012		PJM			
												Drawn			
												TLS			