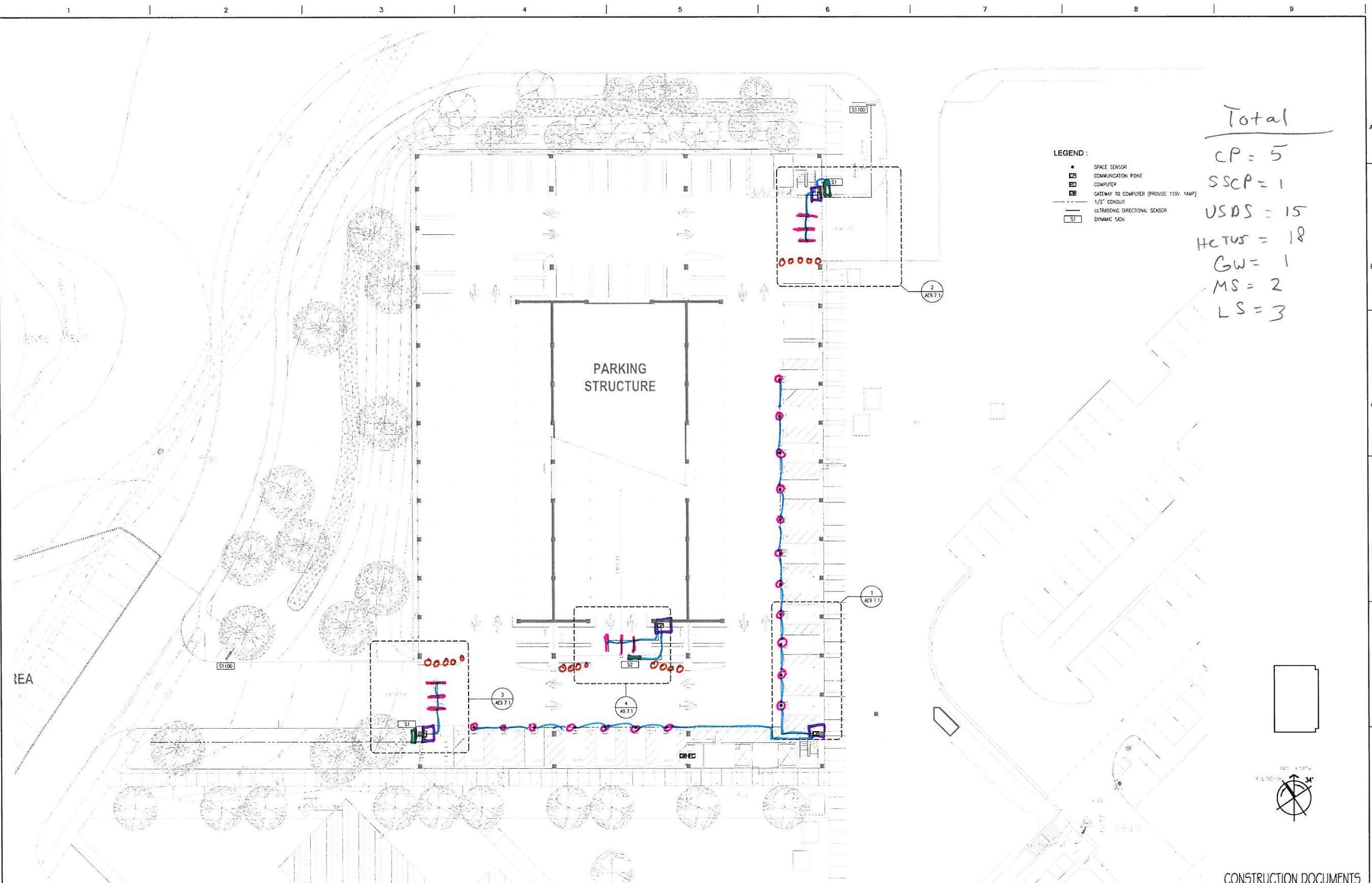
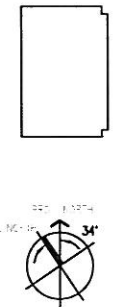


one eighth inch = one foot
one quarter inch = one foot
three eighths inch = one foot
one half inch = one foot
three quarters inch = one foot
one inch = one foot
one and one half inches = one foot
two inches = one foot
three inches = one foot



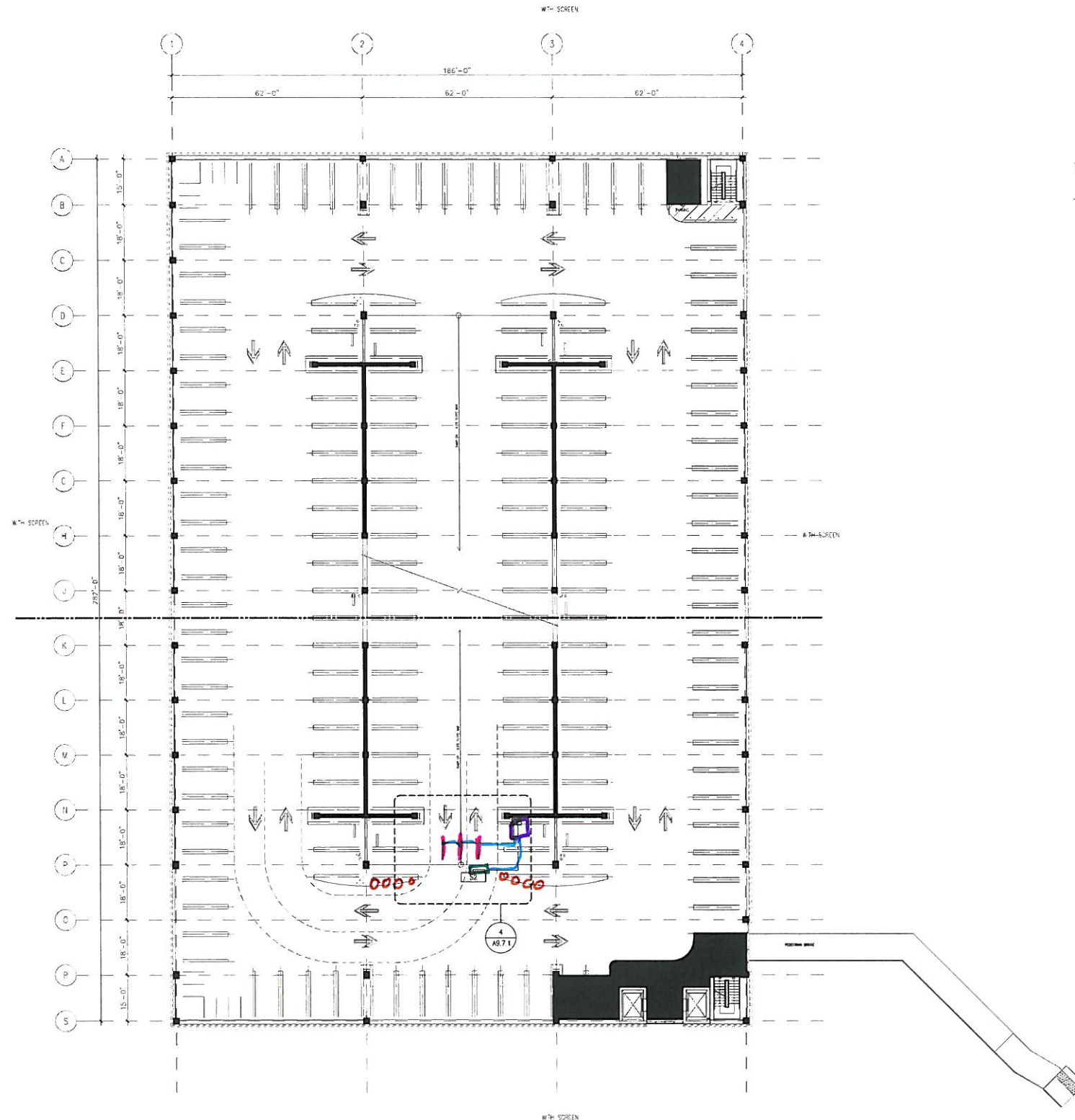
Total
CP = 5
SSCP = 1
USDS = 15
HCTUS = 18
GW = 1
MS = 2
LS = 3



CONSTRUCTION DOCUMENTS

CONSULTANTS:  Architecture / Engineering / Consulting 1201 Marina Village Parkway Suite 100, Redwood City, CA 94061 Telephone 650.475.0000 Fax 650.475.0110		ARCHITECT/ENGINEERS: SMITHGROUP architecture engineering interiors planning 301 BATTERY STREET, 7TH FLOOR SAN FRANCISCO, CA 94111 T 415.227.8100 F 415.882.7718 www.smithgroup.com Associate Architect: The Design Partnership LLP Architects + Planners 1412 VAN NESS AVE., 2ND FLOOR SAN FRANCISCO, CA 94109 T 415.771.2131 F 415.771.3476 www.dpl.com		Drawing Title GROUND LEVEL PLAN Approved Project Director 	Project Title CENTERS FOR AMBULATORY CARE, POLYTRAUMA AND BLIND REHABILITATION Parking Structure Location 3801 Miranda Ave., Palo Alto CA Date 20 SEPTEMBER 2011 Checked TWSH Drawn RSC	Project Number 640-424 Building Number 501 Drawing Number OP1.1.1 	Office of Construction and Facilities Management
---	--	---	--	--	---	--	---

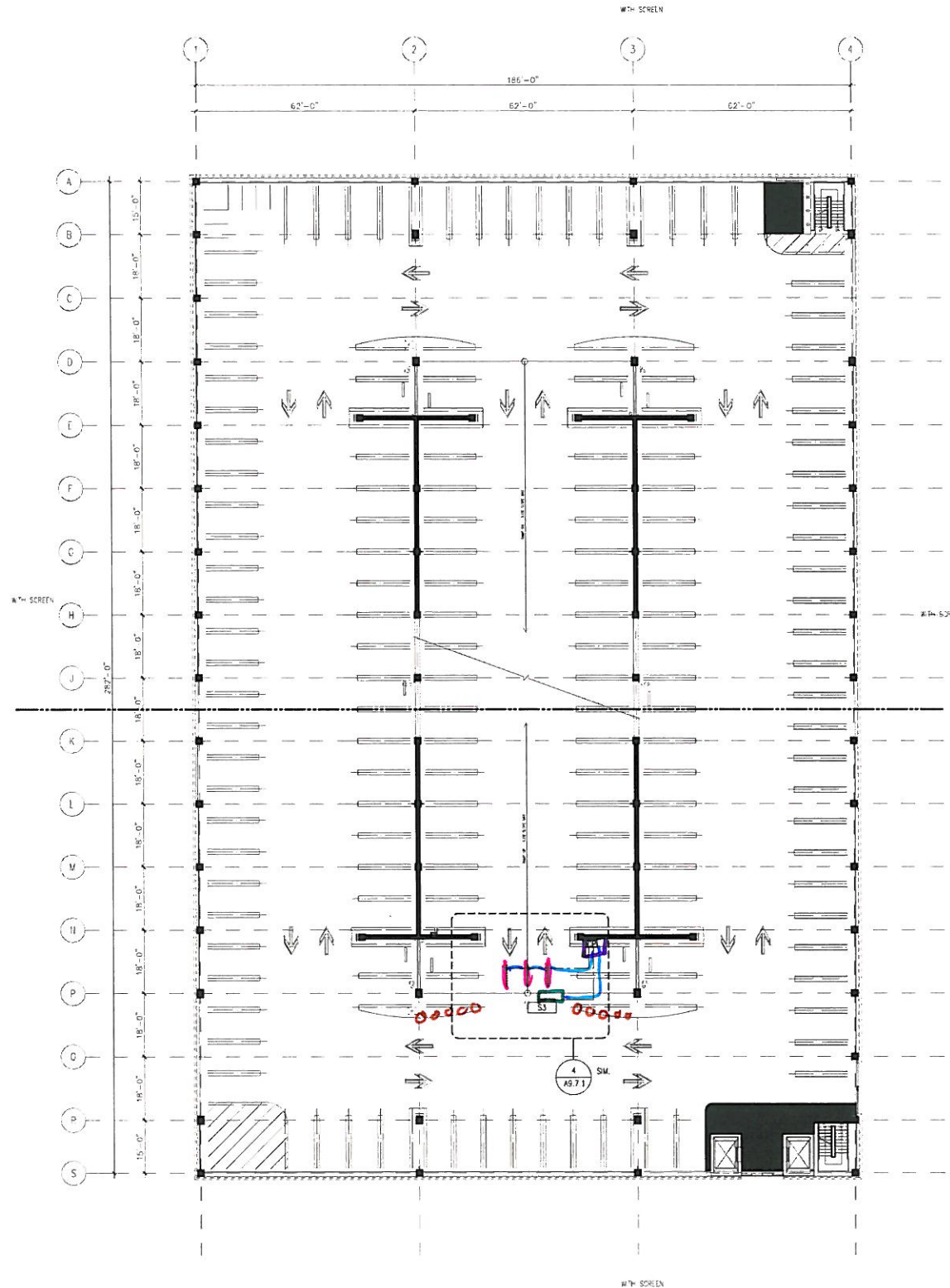
one eighth inch = one foot
one quarter inch = one foot
three eighths inch = one foot
one half inch = one foot
three quarters inch = one foot
one inch = one foot
one and one half inches = one foot
two inches = one foot
three inches = one foot



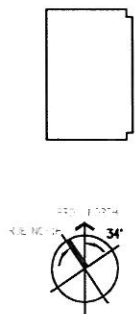
CONSTRUCTION DOCUMENTS

CONSULTANTS: Architecture / Engineering / Consulting 1201 Marina Village Parkway Suite 100 Alameda, CA 94601 Telephone 510 473 0000 Fax 510 473 0310		ARCHITECT/ENGINEERS: The Design Partnership LLP Architects + Planners 301 BATTERY STREET, 7TH FLOOR SAN FRANCISCO, CA 94111 T 415.227.8100 F 415.882.7716 www.smithgroup.com		Drawing Title SECOND LEVEL PLAN Approved Project Director 		Project Title CENTERS FOR AMBULATORY CARE, POLYTRAUMA AND BLIND REHABILITATION Parking Structure Location 3801 Miranda Ave., Palo Alto CA Date 20 SEPTEMBER 2011 Checked TWB Drawn RBC		Project Number 640-424 Building Number 501 Drawing Number OP1.12		Office of Construction and Facilities Management 	
--	--	---	--	---	--	---	--	--	--	---	--

three inches = one foot
one and one half inches = one foot
one inch = one foot
three quarters inch = one foot
one half inch = one foot
three eighths inch = one foot
one quarter inch = one foot
one eighth inch = one foot

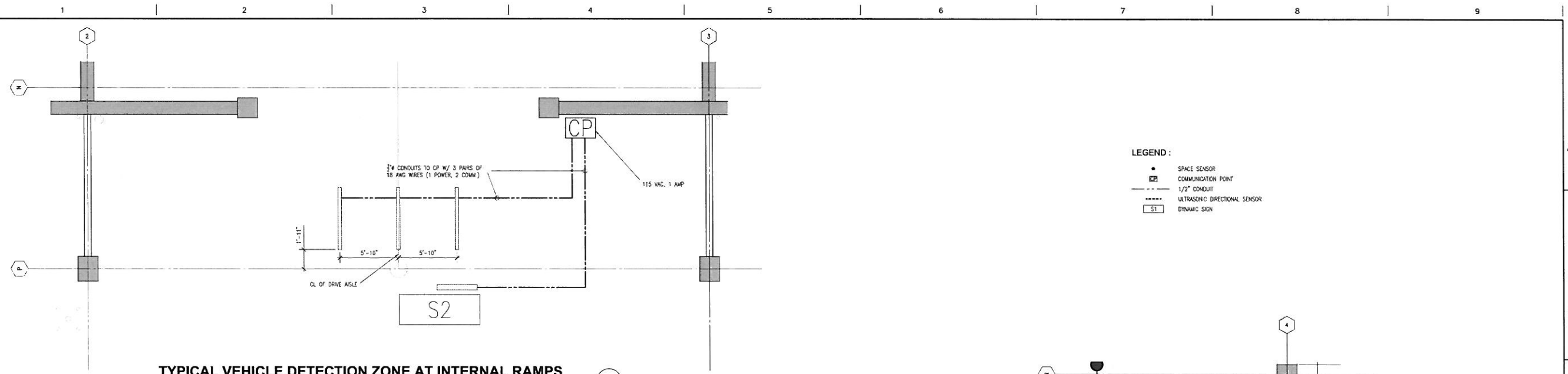


- LEGEND:
- COMMUNICATION POINT
 - 1/2" CONDUIT
 - ULTRASONIC DIRECTIONAL SENSOR
 - DYNAMIC SIGN



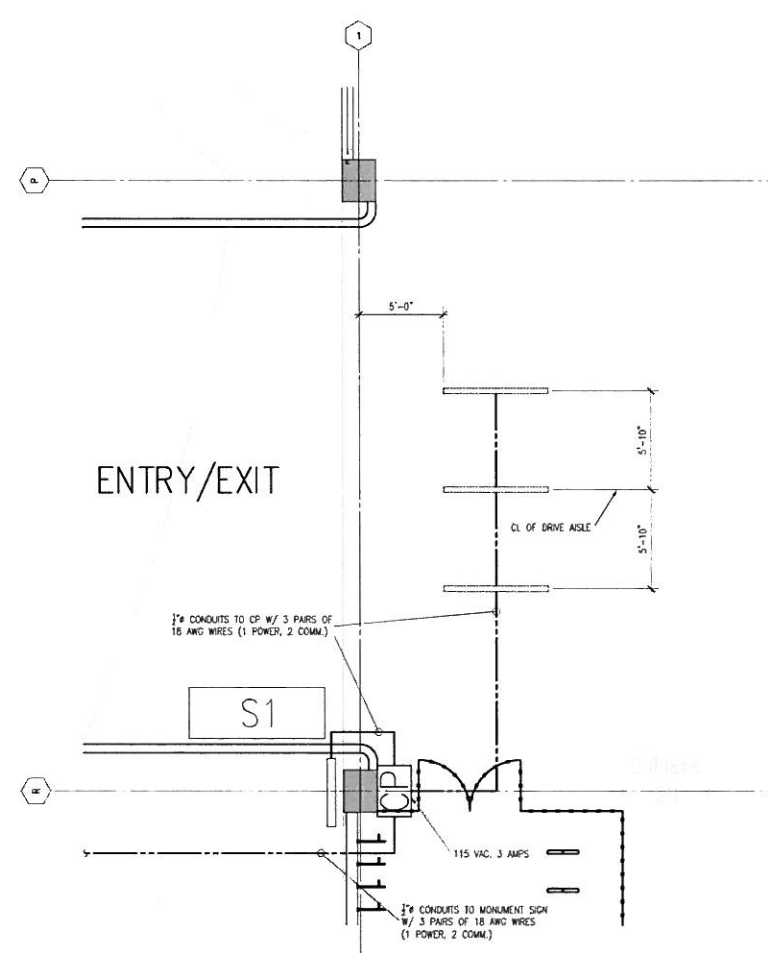
CONSTRUCTION DOCUMENTS

CONSULTANTS: Architecture / Engineering / Consulting 1201 Marina Village Parkway Suite 100 Alameda, CA 94501 Telephone 510 473 0300 Fax 510 473 0310		ARCHITECT/ENGINEERS: The Design Partnership LLP Architects + Planners 301 BATTERY STREET, 7TH FLOOR SAN FRANCISCO, CA 94111 T 415.227.0100 F 415.882.7718 www.smithgroup.com		Drawing Title: THIRD LEVEL PLAN Approved Project Director: 		Project Title: CENTERS FOR AMBULATORY CARE, POLYTRAUMA AND BLIND REHABILITATION Parking Structure Location: 3801 Miranda Ave., Palo Alto CA Date: 20 SEPTEMBER 2011 Checked: TWH Drawn: RBC		Project Number: 640-424 Building Number: 501 Drawing Number: OP1.1.3		Office of Construction and Facilities Management 	
--	--	---	--	--	--	--	--	--	--	---	--



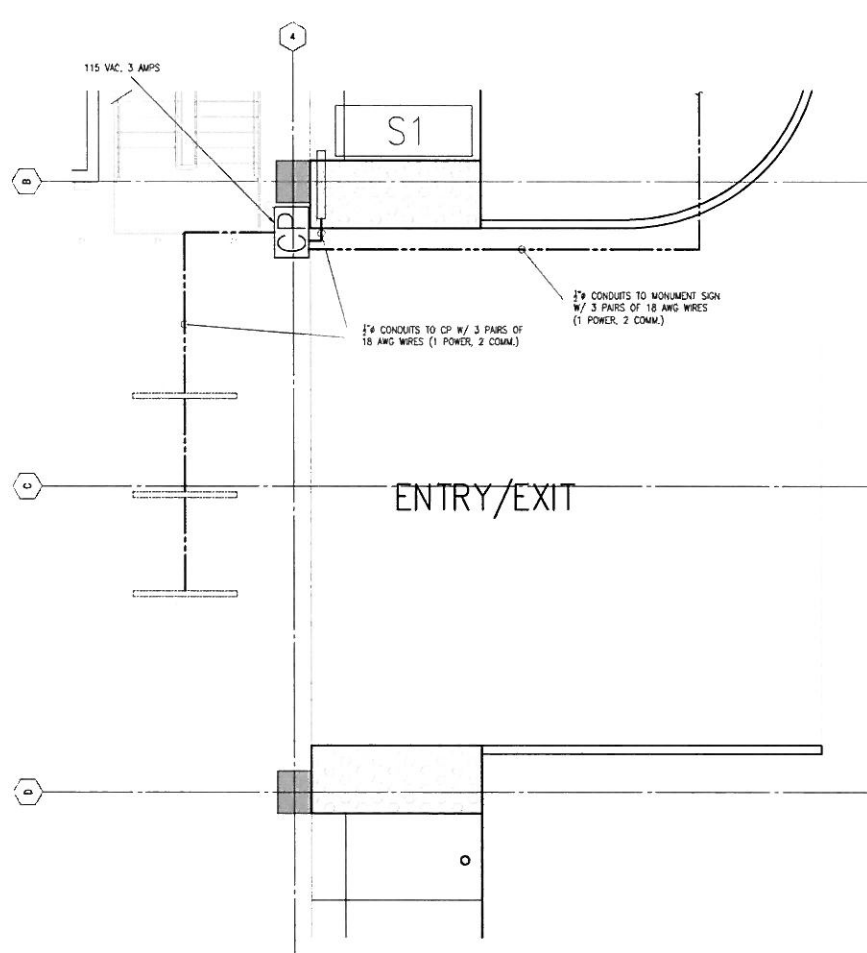
TYPICAL VEHICLE DETECTION ZONE AT INTERNAL RAMP

SCALE: 1/4" = 1'-0"



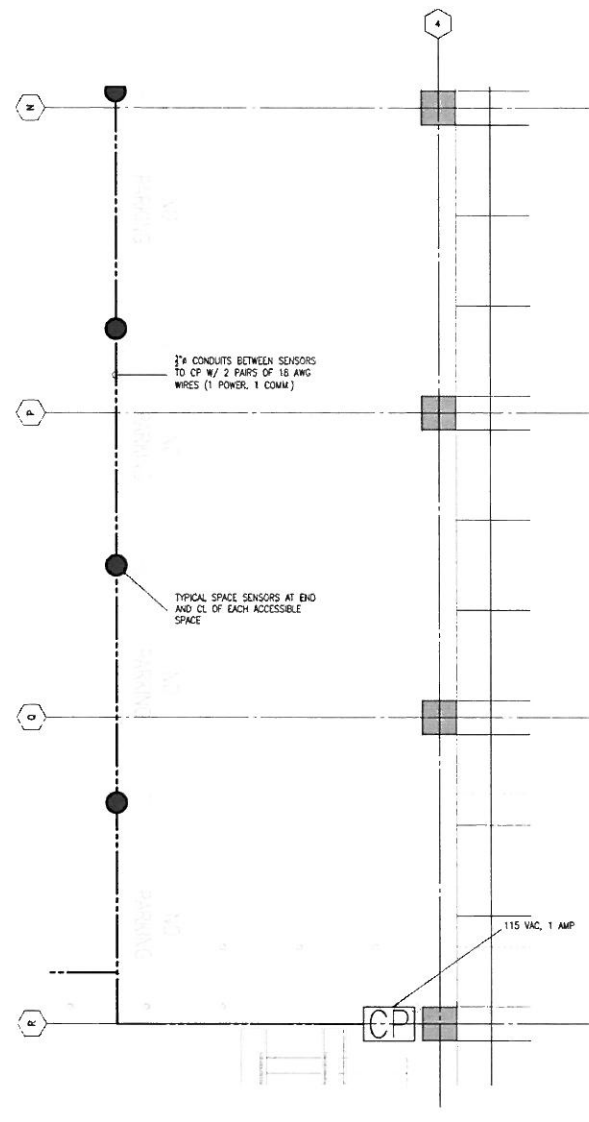
VEHICLE DETECTION ZONE AT ENTRY/EXIT

SCALE: 1/4" = 1'-0"



VEHICLE DETECTION ZONE AT ENTRY/EXIT

SCALE: 1/4" = 1'-0"



TYPICAL DETAIL PLAN OF SPACE SENSOR

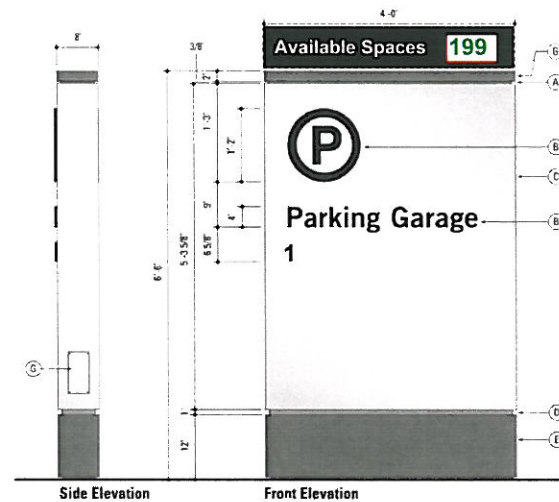
SCALE: 1/4" = 1'-0"

- LEGEND :**
- SPACE SENSOR
 - COMMUNICATION POINT
 - 1/2" CONDUIT
 - ULTRASONIC DIRECTIONAL SENSOR
 - DYNAMIC SIGN



CONSTRUCTION DOCUMENTS

<p>1 ADDENDUM #1</p> <p>10 MAY 2011</p> <p>Date</p>	<p>CONSULTANTS:</p> <p>IPD</p> <p>Alameda Frisco Los Angeles Sacramento</p> <p>Architecture / Engineering / Consulting</p> <p>1201 Marina Village Parkway Suite 100 Alameda, CA 94501</p> <p>Telephone 510 473 0300 Fax 510 473 0310</p>	<p>Seals and Signatures</p> <p><i>[Signature]</i></p> <p>STATE OF CALIFORNIA</p>	<p>ARCHITECT/ENGINEERS:</p> <p>SMITHGROUP</p> <p>architecture engineering interior planning</p> <p>351 BATTERY STREET, 7TH FLOOR SAN FRANCISCO, CA 94111 T 415.227.0100 F 415.882.7718 www.smithgroup.com</p> <p>Associate Architect: The Design Partnership LLP Architects + Planners 1412 VANNESS AVE., 2ND FLOOR SAN FRANCISCO, CA 94109 T 415.777.3751 F 415.777.3476 www.dpl.com</p>	<p>Drawing Title</p> <p>DETAILED PLANS</p> <p>Approved Project Director</p> <p><i>Milan Arsic</i></p>	<p>Project Title</p> <p>CENTERS FOR AMBULATORY CARE, POLYTRAUMA AND BLIND REHABILITATION Parking Structure</p> <p>Location</p> <p>3801 Miranda Ave., Palo Alto CA</p> <p>Date</p> <p>20 SEPTEMBER 2011</p> <p>Checked</p> <p>YHSH</p> <p>Drawn</p> <p>RSC</p>	<p>Project Number</p> <p>640-424</p> <p>Building Number</p> <p>501</p> <p>Drawing Number</p> <p>QP2.1.1</p>	<p>Office of Construction and Facilities Management</p>
---	--	---	--	---	--	--	--



Side Elevation Front Elevation

Sign Type: Building ID

Scale: 3/4" = 1'-0"

- A. 3/8" deep reveal to have painted finish to match color TBD
- B. All letterforms to be 6 1/2" high push-through translucent white polycarbonate. Depth of push through to be 1/2" proud of fascia. All letterforms to be faced with translucent daylight vinyl, color to match TBD. Typeface is Trade Gothic LT Std Bold and Bold No. 2
- C. Fabricated internally illuminated 1/8" painted aluminum sign cabinet to match TBD
- D. 1" deep reveal to have painted finish to match color TBD
- E. 1/8" aluminum kick plate with painted finish to match color TBD
- F. Fabricated aluminum cap with painted finish to match TBD. Top to be removable for relamping and maintenance access.
- G. Access panel with weather tight seal. Held in place with push mounted screws. Master electrical switch for sign to be located behind panel.
- H. Sign fabricator/installer to provide footing details as specified by a licensed California engineer.

Match VA Standards
(see attachments)

MONUMENT SIGN (FOR REFERENCE ON.Y)

SCALE: N.T.S.



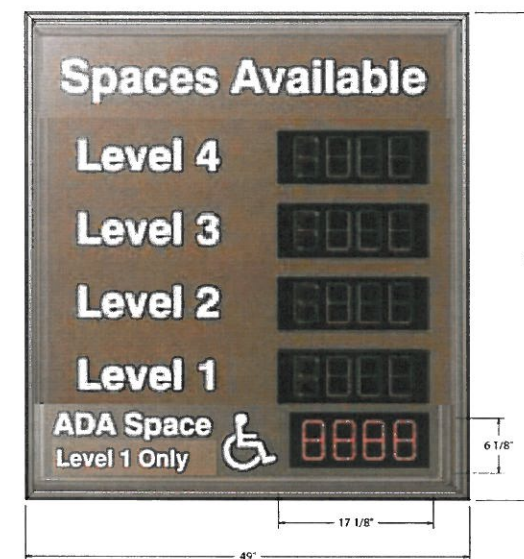
SIGN S2 - DYNAMIC MESSAGE SIGN (AT BITTIN OF RAMP AT GROUND AND 2ND LEVEL)

SCALE: N.T.S.



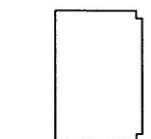
SIGN S3 - DYNAMIC MESSAGE SIGN (AT BOTTOM OF RAMP AT 3RD LEVEL)

SCALE: N.T.S.



SIGN S1 - DYNAMIC MESSAGE SIGN AT GARAGE ENTRY

SCALE: N.T.S.



CONSTRUCTION DOCUMENTS

CONSULTANTS: Alameda Palo Alto Los Angeles Sacramento 1201 Market Village Parkway, Suite 100 Alameda, CA 94501 Telephone 510 473 0300 Fax 510 473 0310		ARCHITECT/ENGINEERS: SMITHGROUP architecture engineering interior planning 301 BATTERY STREET, 7TH FLOOR SAN FRANCISCO, CA 94111 T 415.227.8100 F 415.882.7718 www.smithgroup.com Associate Architects: The Design Partnership LLP Architects + Planners 1412 VAN NESS AVE., 2ND FLOOR SAN FRANCISCO, CA 94109 T 415.777.3737 F 415.777.3476 www.dpl.com		Drawing Title: SIGNS AND GRAPHIC DETAILS Approved Project Director: 		Project Title: CENTERS FOR AMBULATORY CARE, POLYTRAUMA AND BLIND REHABILITATION Parking Structure Location: 3801 Miranda Ave., Palo Alto CA Date: 20 SEPTEMBER 2011 Checked: YTHSH Drawn: RSC		Project Number: 640-424 Building Number: 501 Drawing Number: QP2.12		Office of Construction and Facilities Management	
---	--	---	--	---	--	--	--	---	--	---	--