[illegible]



$\Delta$ No.	Description	Date
1	AMENDMENT	08-31-09
2	CHANGE ORDER	11-10-09
3	RFP-00028 FLAM STOR REV	05-27-10
4	RFI 287	09-30-10
5	CPR-00054	04-28-11

CONSULTANTS:

Professional Seals:



ARCHITECT/ENGINEERS:



145 Lincoln Avenue  
Winter Park, Florida 32789  
407 647 1039

1001 G Street, NW, Suite 1000  
Washington, D.C. 20001  
202 694 9300

Drawing Title  
WAREHOUSELEVEL M  
CONSTRUCTION PLAN

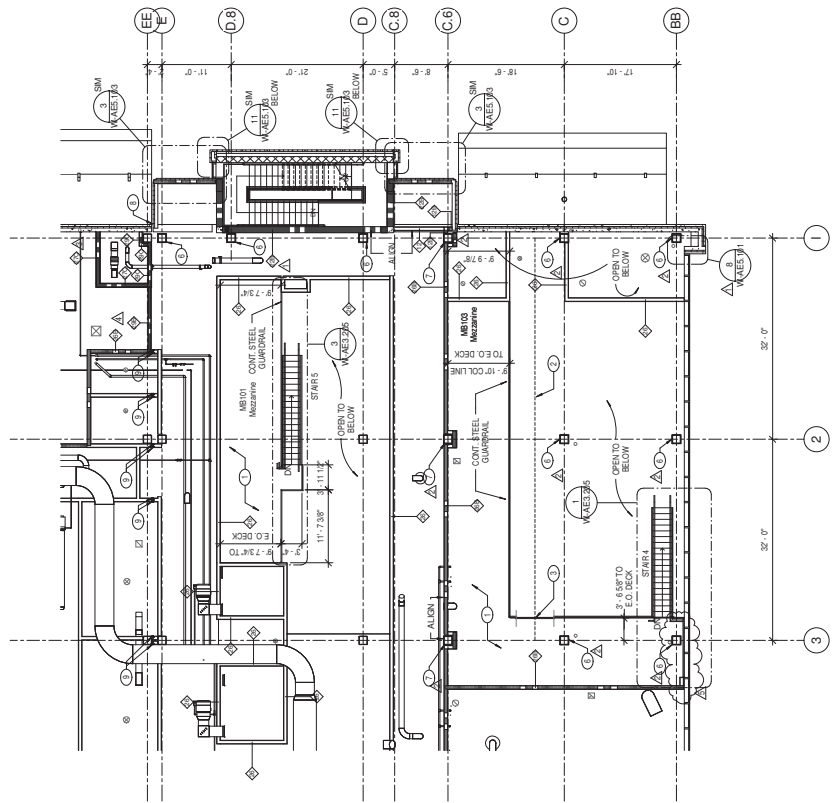
Approved: Project Director

*Melan Archib*

**Project Title**  
**A NEW HOSPITAL FOR  
VAMC ORLANDO, FLORIDA**

W-AE1.1A3

BUILDING IS FULLY SPRINKLERED



## NOTES

SHEET NOTES

1 SEE W-QW 1A1 TO W-QW 2B2A FOR INTERIOR ELEVATION REFERENCES.  
2 INCLUDE FIRESAFING IN EXTERIOR WALL CAVITIES AT EACH FLOOR LEVEL.

### LEGEND

1 HOUR RATED WALL 

2 HOUR RATED WALL 

REVIEWS

1	MEZZANINE PLATFORM F.F. 11'4"
2	MANUAL HOIST & BEAM ABOVE REFER TO SECTION W.O.W 1B5, & W-A1-143
3	REMOVABLE STRUCT. W.O.W 1B5, & W-A1-143
4	GUARDRAIL
5	NOT USED
6	UNMOUNTED ASSEMBLY - UL X330. REFER TO DETAIL W-AE5.102/4
7	1 HR FIRE RATED ASSEMBLY - UL X330. REFER TO DETAIL W-AE5.102/5
8	W.O.W 3" X 3" EXPANSION JOINT COVER
9	INTERIOR 3" EXPANSION JOINT COVER

Area A

Area B

 **KEY PLAN**

Age Group	Category 1	Category 2	Category 3	Category 4
0	~10%	~10%	~10%	~10%
4	~10%	~10%	~10%	~10%
8	~10%	~10%	~10%	~10%
16	~10%	~10%	~10%	~10%
24	~10%	~10%	~10%	~10%

A FORM 09-6231, OCT 1978



